

# 36 CIRCLE

Elevating Spaces Through Expression  
Driving Change Through Sustainability  
A Lab Igniting Innovation  
Building Legacy For Tomorrow

## Perspectives on design, engineering & management

3D Modelling  
3D Printing  
Digital Construction  
Advanced Visualisation  
AI Agent  
Artificial Intelligence  
Augmented Reality  
Automation Tools  
Digital Dashboard  
Chatbot  
Cloud Computing  
Cloud Operations  
Computational BIM  
Digital Design  
Data mining  
Digital Mobility  
Digital Twin  
Drone & Robotics  
Generative AI  
Generative Design  
ICE Coordination  
Integrated Digital Delivery  
Internet of Things  
ISO19650  
Digital Fabrication  
Machine Learning  
Reality Capture  
Realtime Rendering  
Scan to BIM  
Structure Analysis  
Virtual Mock-up  
Virtual Reality  
Visual Programming  
Building Information Modelling  
Common Data Environment  
Design for Manufacturing & Assembly  
Digital Facility Management  
Environmental Sustainable Design  
Virtual Design & Construction

Master Planning  
Architecture  
Ideate & Create  
Conceptualisation  
Analysis  
Research & Development  
Space Planning



**Architecture**  
Regardless of scale or typology, our designs address and exceed user expectations to deliver an Experience Beyond.

Mechanical  
Electrical  
Civil  
Structural  
Fire Safety  
Environmental



**Engineering**  
Innovative and sustainable solutions for every challenge, ensuring client satisfaction.

Advisory & Consultancy  
Feasibility Study  
Master Design Guidebook  
Space Planning  
Test Fit  
Turn Key Solutions



**Interior**  
Our spaces are designed to excite, soothe, and inspire the mind, empowering form and function in equal measure.

Building Studies  
Workplace Studies  
Space Planning  
Interior Design  
Project Management  
Sustainability  
Turn Key Solutions



**Workplace**  
Delivering people-centric spaces that empower personnel performance now and into the future.

Masterplanning  
Space Planning  
Blue & Green Solutions  
Sustainability  
Playground Design



**Landscaping**  
Enabling dynamic and mutually beneficial interplays between nature and the built environment.



**Wayfinding**  
Enabling users of every stripe to navigate the built environment with ease - we deliver seamless and intuitive experiences.

Planning & Analysis  
Wayfinding Strategy  
Signage System & Design  
Environmental Graphics  
Placemaking



**Lighting**  
Efficient, evocative, and essential - our lighting specialists direct the eye towards, across, and beyond each plane and perspective.

Architectural Lighting  
Equipment Cost Control  
Operational Cost Control  
Lux Level Calculations  
Lighting Controls  
Lighting Audits



**Branding**  
Articulating brand appeal and positioning, we craft blueprints that give life to visual identities and user experiences.

Market Insight  
Brand Audit  
Brand Strategy  
Brand Expression  
Brand Management  
Environmental Branding



**Management**  
Our experienced, systematic, and communicative specialists realise the best end-to-end solutions for every project.

Project Management  
Project Development  
Construction Management  
Cost Management  
Place Management  
Construction  
Design & Build  
Turn Key Solutions  
Contract Works

**360 Solution**  
Multi-Disciplinary

100%  
Cloud  
Operations

Digitalisation  
Training  
Centre

Collaborative  
Design  
Approach

Phygital  
Mobility  
Anytime  
Anywhere

Embracing  
Disruptive  
Innovations

ISO19650  
Certified

EXPERIENCE  
BEYOND.

VISION Experience Beyond

PURPOSE To Improve the World in which We Live

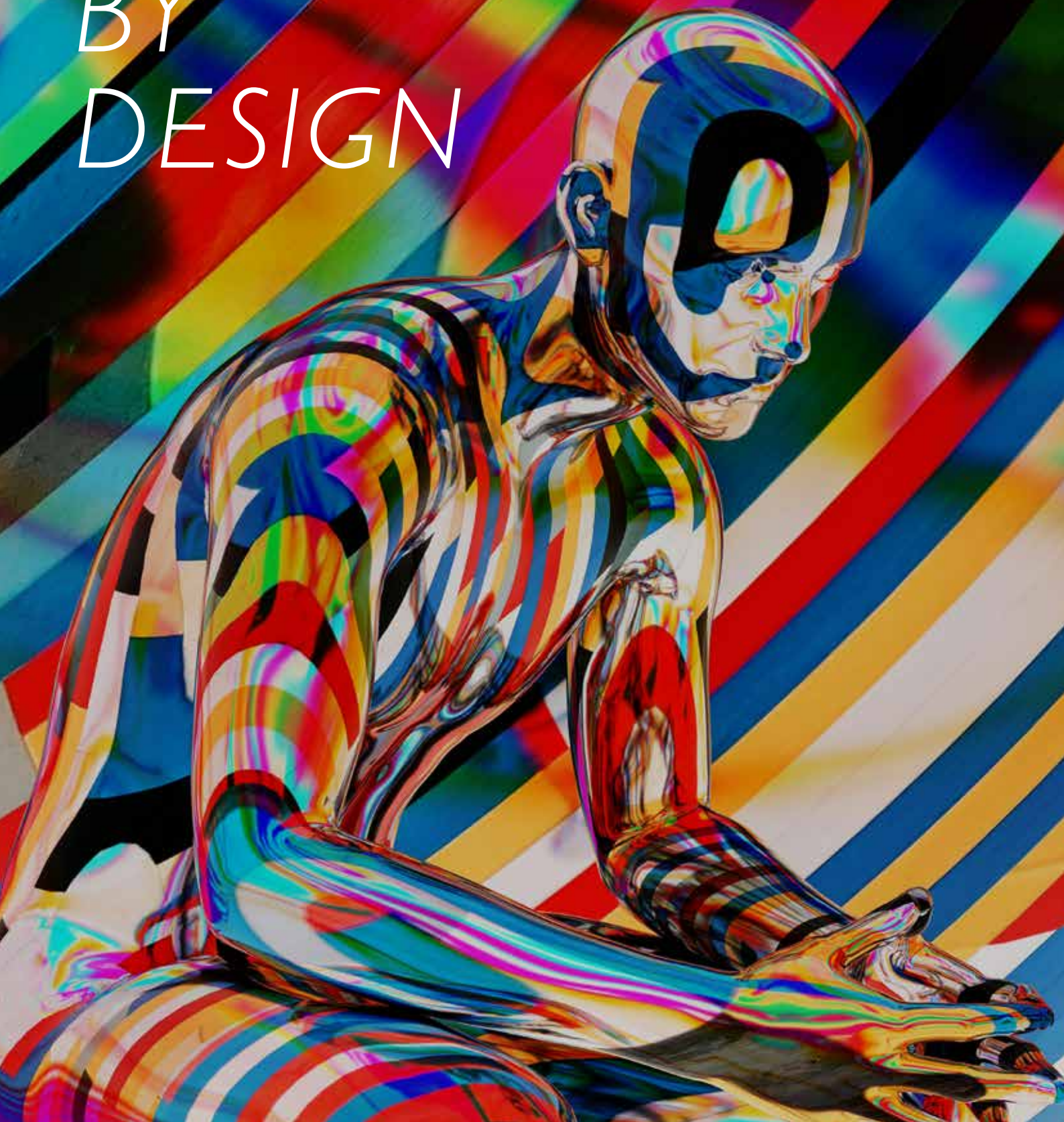
ROLE To Enhance the Well-being of Inhabitants through Excellence in Sustainable Design

# SYNERGY

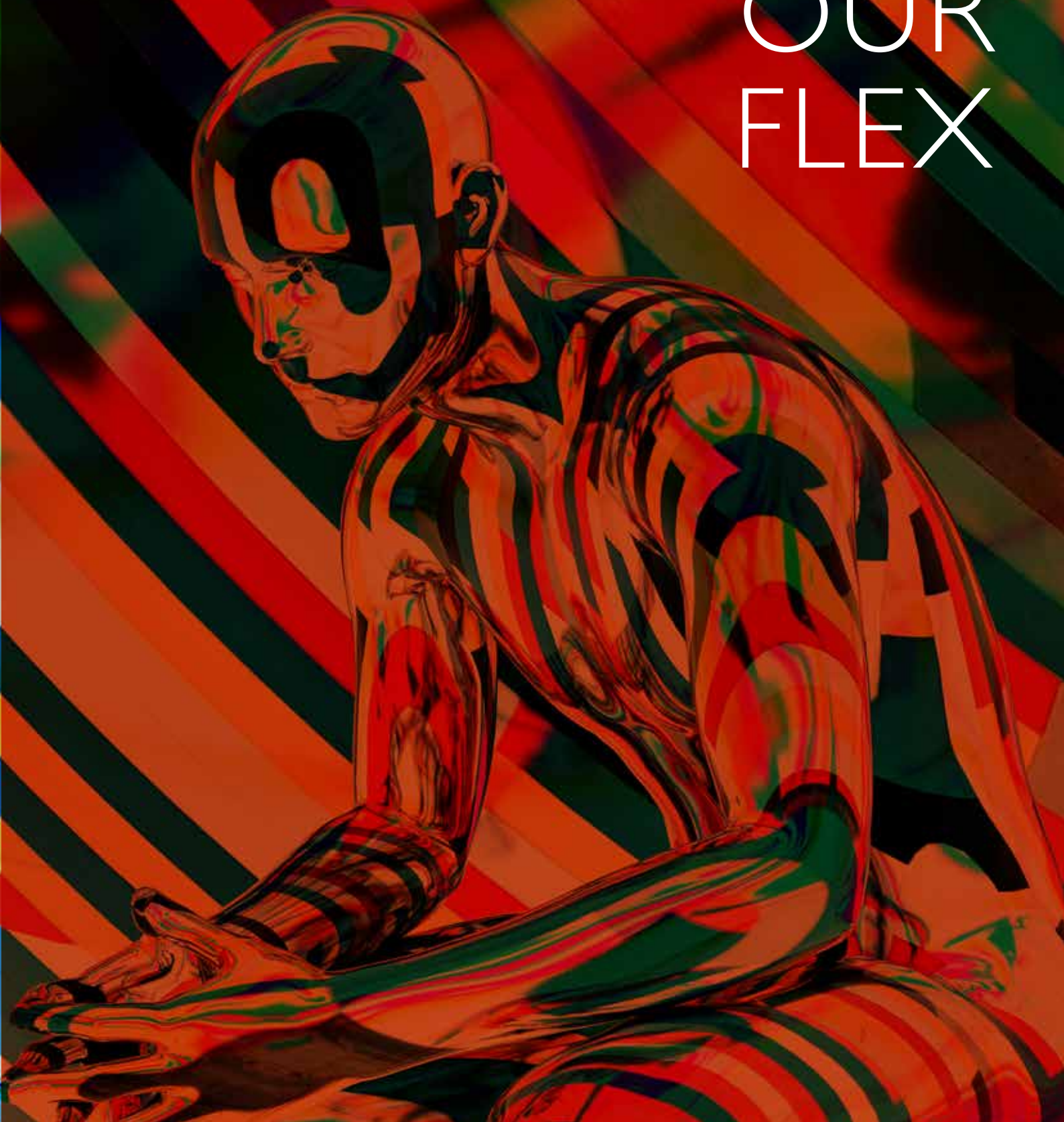
We thrive on collaboration,  
delivering 360 design  
solutions that are greater  
than the sum of their parts.



DARING  
BY  
DESIGN



THAT'S  
OUR  
FLEX







Experience Beyond  
Precision



Extending Our Global Imprint

EXPERIENCE  
BEYOND.



ONG&ONG

THIS IS  
VIETNAM.

ONG&ONG Co., Ltd

Unit 1003B, Level 10 Centre Point Building,  
106 Nguyen Van Troi Street Ward 8, Phu Nhuan District,  
Ho Chi Minh City, Vietnam

group.ong-ong.com

ONG&ONG Co., Ltd - Hanoi

Room 913, 9th Floor, Commercial,  
No. 174 Thai Ha, Trung Liet Ward,  
Dong Da District, Hanoi City, Vietnam

We are proud of our  
numerous ties across Asia  
and worldwide, bonding  
the ONG&ONG family,  
valued clients, and projects.



Brunei			
Phnom Penh		Yogyakarta	
Siem Reap		Basra	
Sihanoukville		Hakuba	
Douala		Nagano	
Kribi		Niseko	
Yaoundé		Sanuki	
Anshun		Tokyo	
Baoding		Busan	Di An
Beijing		Incheon	Dong Nai
Changsha		Sejong	Dong Thap
Changzhou		Seoul	Ha Long
Chengdu		Vientiane	Haiphong
Chongli		Salima	Hanoi
Chongqing		Johor	Hau Giang
Fengcheng		Kota Kinabalu	Ho Chi Minh
Fujian		Kuala Lumpur	Lang Co Bay
Guangzhou	Delhi	Kuantan	Nguyen Van Tiet
Guanshanhu	Faridabad	Kuching	Nha Trang
Haikou	Greater Noida	Langkawi	Ninh Thuan
Hangzhou	Gurgaon	Melaka	Phan Rang
Harbin	Gurugram	Negeri Sembilan	Phan Thiet
Hefei	Haryana	Pahang	Phu Quoc
Jiangyin	Hospet	Penang	Quang Ngai
Jilin	Hyderabad	Perak	Quang Ninh
Jining	Jaipur	Sabah	Saigon
Kunming	Jammu	Sarawak	Tan Phuoc District
Lanzhou	Kerala	Selangor	Thai Binh
Linshui	Kolkata	Dhaalu Atoll	Thanh Hóa
Nanchang	Lakhanpur	Huvadhu Atoll	Thu Dau Mot
Nanjing	Lucknow	Malé	Tra Vinh
Qingdao	Mumbai	Flic En Flac	Vinh Long
Sanya	Mylapore	Ilot Fortier	Vung Tau
Shaanxi	New Delhi	Bayanzurkh	Zanzibar
Shanghai	Noida	Ulaanbaatar	
Shangrao	Pune	Aungpan	
Shenzhen	Surat	Mandalay	
Suzhou	Thane	Muse	
Taihu	Udaipur	Phang-Nga	
Tianjin	Bali	Phetchaburi	
Wen Chang	Balikpapan	Phuket	
Wuhan	Bandung	Prachuap Khiri Khan	
Wuxi	Bangka	Pratumthani	
Xi An	Batam	Rayong	
Xiamen	Bekasi	Samut Prakan	
Yantai	Belitung	Thakuaaph	
Zhengzhou	Bintan	Dili	
Nicosia	Bogor	Timor-Leste	
Cairo	Depok	Entebbe	
Hong Kong	Jakarta	Uganda	
Ahmedabad	Java	Abu Dhabi	
Balda	Kediri	Dubai	
Bangalore	Lombok	London	
Bloomfield	Lubuk Linggau	Birmingham	
Chennai	Makassar	New York	
Coimbatore	Manado	Texas	
Dehradun	Maratua Islands	Napa	
	Medan	Ba Ria	
	Mokupa	Bac Liêu	
	Pamenang Highland	Binh Duong	
	Semarang	Binh Thuan	
	Sentul	Byon Me Thuot	
	Serang	Cam Ranh	
	Sorong	Con Dao	
	Sulawesi	Da Lat	
	Tangerang	Da Nang	
	Tarakan	Lam Dong	
	West Java		



Kerjasama  
хамтын ажиллагаа  
协同效应



The Atelier 22



## CONTENTS

BeyondX Lab, Keppel Road 30

- 9 Quick Facts 23/24
- 14 Beyond Growth: Expanding Minds, Markets, and Possibilities
- 16 Icons: Collaborative-Led Designs
- 58 Driving Change with Eco-Friendly Architecture
- 70 OSM Professorship and Travelling Fellowship 2025
- 74 The Lab That's Shaping Tomorrow, Today
- 78 Specialists: A Holistic, 360 Approach
- 98 Our Organisation
- 99 Contacts
- 102 Awards



Parochial House 34

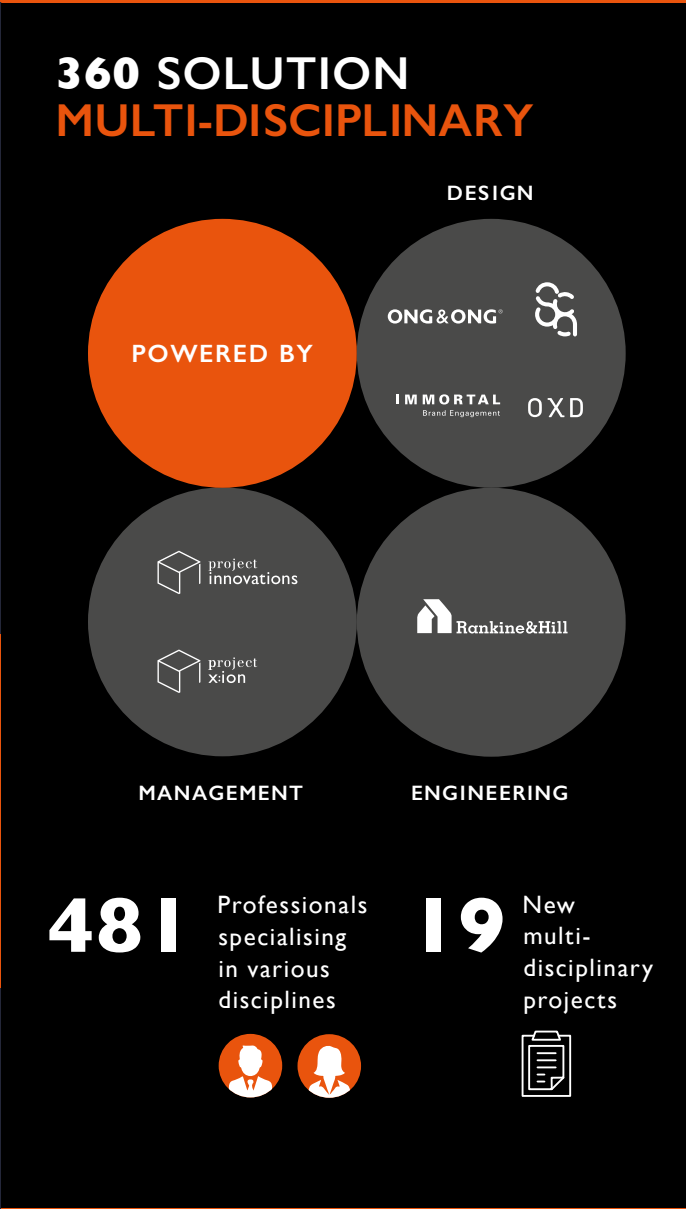


MK Residence 24

SINGAPORE INDONESIA MALAYSIA MONGOLIA MYANMAR THAILAND VIETNAM

## ONG&ONG QUICK FACTS FY 23/24

WE UNDERSTAND ASIA





# ONG&ONG

THIS IS  
THAILAND.

ONG&ONG Design Co Ltd

75 /50 Level 15, Richmond Office Building,  
Soi Sukhumvit 26, Klongtan, Klongtoey,  
Bangkok 10110, Thailand

[group.ong-ong.com](http://group.ong-ong.com)

# ARCHI TEC TURE

Regardless of  
scale or typology,  
our designs  
address and  
exceed user  
expectations  
to deliver an  
Experience  
Beyond.



Master Planning  
Architecture  
Ideate and Create  
Conceptualisation & Analysis  
Research & Development  
Space Planning



We challenge  
conventions with  
sustainable designs  
that adapt - for people  
and the future.

Ashvinkumar Kantilal,  
Group CEO

[ong-ong.com](http://ong-ong.com)



# Beyond Growth: EXPANDING MINDS, MARKETS, AND POSSIBILITIES

At the intersection of strategy, technology, and human capital, our leadership continues to propel the company forward in an ever-changing landscape.



**TAN PECK KHOON**  
Vice Chairman  
ONG&ONG Holdings



**ASHVINKUMAR KANTILAL**  
Group Chief Executive Officer  
ONG&ONG Group



**ONG TZE BOON**  
Group Executive Chairman  
ONG&ONG Group and  
ONG&ONG Holdings

The ONG&ONG Executive Committee (Exco) comprising of Ong Tze Boon, Ashvinkumar Kantilal, and Tan Peck Khoo recently offered their insights.

## A Vision for Growth: Expanding with Purpose

Growth is more than just expansion—it is about strategic positioning and

long-term impact. The Exco highlighted the company's decision to strengthen its foothold in Johor Bahru, a move that aligns with the development of the Singapore-Johor Economic Zone.

"The Johor office expansion is driven by business sentiments because the Singapore and Malaysia governments have

announced the formation of a Singapore-Johor Economic Zone," Ashvin explained.

The economic corridor, designed to boost industries such as pharmaceuticals, data centres, and tourism, is expected to accelerate cross-border business opportunities. With the Rapid Transit System (RTS)

set to be operational by 2027, connectivity between Singapore and Johor will be seamless. Similarly, the other country offices continue to grow, with a strong focus on talent development and local partnerships.

"We don't just expand geographically; we embed ourselves within these

communities to create meaningful impact," Tze Boon added. "It's about being more than a service provider—we aim to be trusted advisors."

## Digital Transformation: The Intersection of Creativity and Technology

The convergence of the digital and physical worlds is reshaping industries, and architecture is no exception. Tze Boon paints a vivid picture of the phygital future, outlining a scenario where augmented reality glasses could guide you through your day.

"Imagine wearing your glasses and as you look around the living room, it locates where you last placed your keys. Or you can look at a pot of boiling water and it tells you the right time to cook your pasta. Just imagine the world where the digital and the physical are intertwined," he said. This vision is about embracing a digital future that intersects with human experience and design.

Tze Boon is particularly passionate about the role of prompt engineering, a new skillset that he believes will be crucial in the coming years. He likened it to the advent of ATMs, which displaced bank tellers but created new jobs in maintaining and servicing those machines.

"The better we prompt engineer, the better the responses - it filters the data

and gives us a more accurate answer to our question," he said.

This shift underscores a broader reality where the digital future requires a different skill set. Architects, designers, and engineers must evolve into content curators—individuals who can refine AI-generated content and apply it meaningfully to their work.

"Your role in the future is either becoming an excellent prompt engineer or an excellent curator," Tze Boon asserts. "Machines can suggest, but we curate the experiential design."

## Mentorship: The Heart of Talent Development

One of the Exco's key focuses is on mentorship to foster talent. Ashvin stressed that talent development is not just about sending employees for courses but about one-on-one mentorship.

"Talent development is always about mentorship. It cannot be that I send you for a course, and then you get an MBA, and then all of a sudden, your talent is developed. I don't think it works that way," he said.

Even as technology transforms the industry, the essence of talent development remains human-centric. Ashvin strongly believes in mentorship and his approach

is simple: when the mentees cultivate and garner an appreciable level of confidence and respect with the project stakeholders, from clients/consultants/contractors/regulators, and begin to see him less, then the system is working well.

To sustain this cycle of growth, ONG&ONG follows a cascading mentorship model, where senior leaders guide directors, who in turn nurture younger architects and designers. This ensures that leadership development happens at every level.

## BeyondX: A Movement, Not Just a Corporate Initiative

The BeyondX initiative embodies ONG&ONG's commitment to fostering innovation. Designed to be an incubator for new ideas, BeyondX is about empowering individuals to think beyond the ordinary. However, the Exco acknowledges a delicate balance in its execution. They are cautious about it being perceived as a corporate initiative led by ONG&ONG, instead of a grassroots movement.

This distinction is crucial, as it will allow BeyondX to grow organically, fuelled by collective passion for exploration and discovery. As a facilitator of new energy, it is poised to cultivate fresh ideas that will shape the future for society.

## Sustainability and ESG: The New Imperatives

Beyond digital transformation, ONG&ONG is deeply committed to sustainability, incorporating Environmental, Social, and Governance (ESG) principles into its operations. The Exco sees ESG not just as a responsibility but as a competitive advantage. By embedding sustainability into projects, ONG&ONG is setting a new standard for responsible architecture, where design decisions prioritise environmental impact alongside functionality.

## Looking Ahead: Future- Proofing Through Innovation


As ONG&ONG navigates an industry that is constantly evolving, the leaders agree that the future belongs to those who adapt. Tze Boon uses a simple analogy to illustrate this:

"If we don't make the change now, I think in five to ten years' time, we'll be a dinosaur."

His words reflect a fundamental truth—innovation is not optional, it is necessary.

(This content was curated with AI support and refined through human review for accuracy and readability.)



An aerial night photograph of a city skyline. In the foreground, two tall, modern skyscrapers with a distinctive vertical ribbed design are illuminated from within, casting a warm glow. They stand on a base of glass-fronted commercial space. Below the towers, a multi-lane highway with a complex interchange is visible, with cars creating light trails. The surrounding urban landscape is a mix of greenery and other buildings, some of which are also lit up. In the far distance, the city's skyline continues with various other high-rise structures under a dark, twilight sky.

Shaped by context, grounded  
in purpose, **each creation tells  
a story of place and people.**

ICONS

Presenting our **creations** across Asia.



ONG&amp;ONG Malaysia

## Duta Park Residences Malaysia

**Hasbullah bin Abdullah, Louis Tan,  
Wan Zuraihi bin Wan Muhammad,  
Nik Ezura, and Nur Helwani**

Architecture

Duta Park Residences in Kuala Lumpur, Malaysia is a modern residential development that seamlessly integrates nature with urban living. Featuring sleek towers with vertical lines, glass, steel, and concrete facades, the design emphasises elegance, energy efficiency, and natural light. The vertical lines in the design accentuate the towers, making them appear taller and slenderer than their actual form. This verticality is played up by balconies and recessed spaces, which add rhythm and dynamism to the overall structure.

A standout feature is the podium deck on levels 9 and 10, an urban oasis with landscaped gardens, water features, and recreational spaces. Residents also enjoy work-friendly amenities like meeting rooms and lounges. Sky decks atop the towers boast an infinity jacuzzi, swimming pool, and a Sky Lounge with a kitchen for private dining. Duta Park Residences embodies modern elegance, offering luxurious living with practical design for a balanced lifestyle.

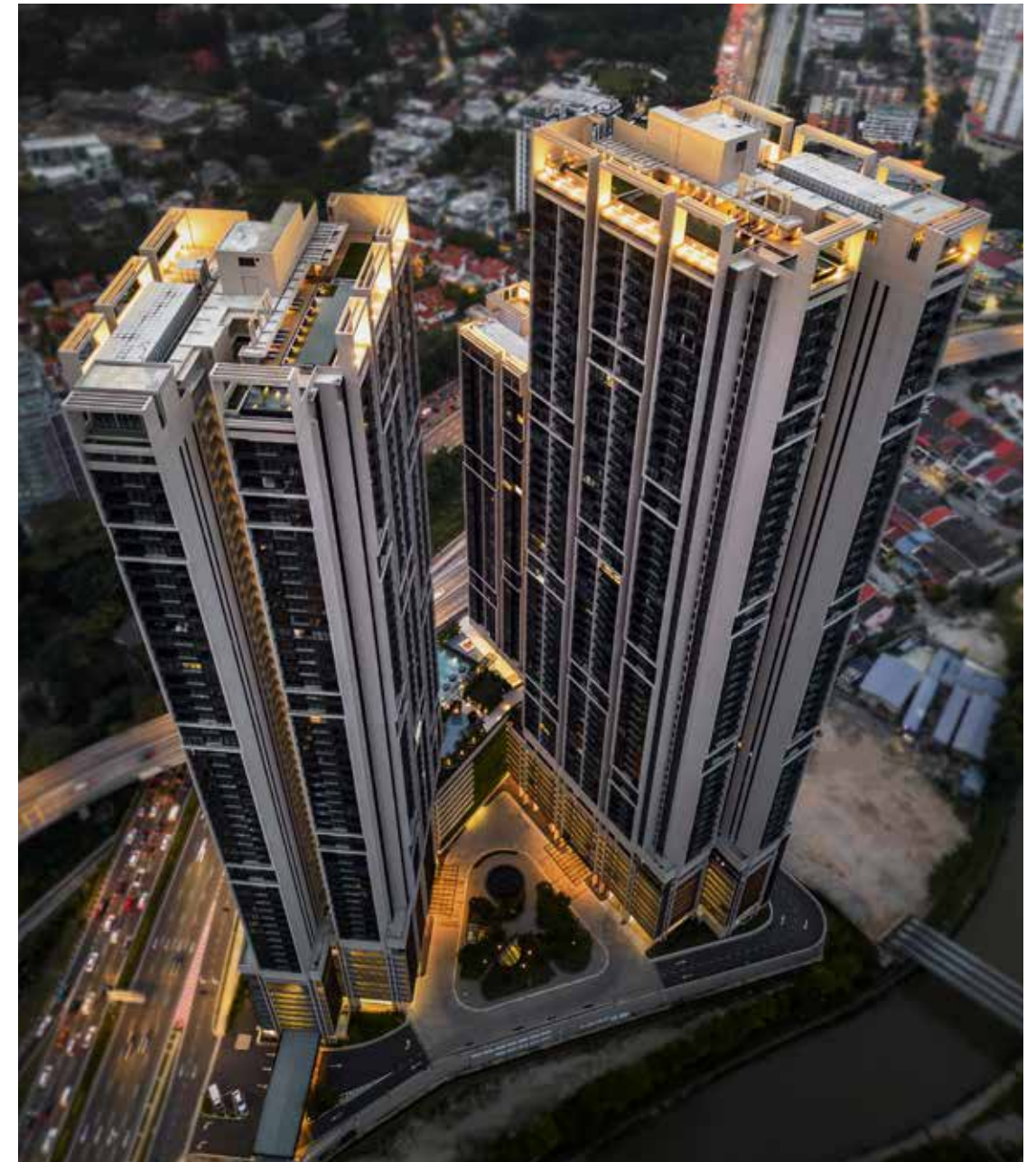


Duta Park Residences adalah pembangunan kediaman yang mengutamakan fungsi dan estetika di Kuala Lumpur. Menggabungkan gaya hidup bandar moden dengan elemen semula jadi, projek ini menawarkan suasana tenang di tengah kota. Menara-menara kediaman ini menampilkan fasad moden dengan kaca,

keluli, dan konkrit, serta garisan menegak yang memberikan kesan lebih tinggi dan langsing. Di dalam, susun atur pelan terbuka memaksimumkan ruang, dengan bilik tidur berlantai kayu lamina dan kawasan komunal bertile mewah. Dek podium di tingkat 9 dan 10 mencipta oasis bandar dengan taman lanskap, elemen

air, dan ruang rekreasi. Terdapat juga ruang kerja dan sosial seperti pavilion hiburan dan dewan serbaguna.

Di tingkat bumbung, dek dengan jakuzi, kolam renang infinity, dan Sky Lounge menawarkan pemandangan indah Kuala Lumpur, menjadikan Duta Park Residences simbol kehidupan bandar moden yang elegan dan praktikal.





ONG&amp;ONG Malaysia

## AtWater Malaysia

**Ahmad Syazli and Muhammad Helmi**  
Architecture

AtWater by Paramount Property Development is a 5.2-acre integrated sanctuary in Petaling Jaya, seamlessly blending residential comfort with urban vibrancy. Phase 1 set the tone with thoughtfully designed residential units, complemented by lush amenities like pools, fitness zones, and yoga pavilions nestled within verdant landscapes.

The recently completed Phase 2 elevates the development with a dynamic mixed-use component. A lively retail podium anchors the space, featuring diverse shops, dining options, and entertainment venues designed to foster community interaction. Above it rise two Grade A, green-certified office towers (8 and 16 storeys), catering to modern businesses with flexible, MSC-compliant workspaces. Their sustainable design underscores AtWater's commitment to environmental responsibility.

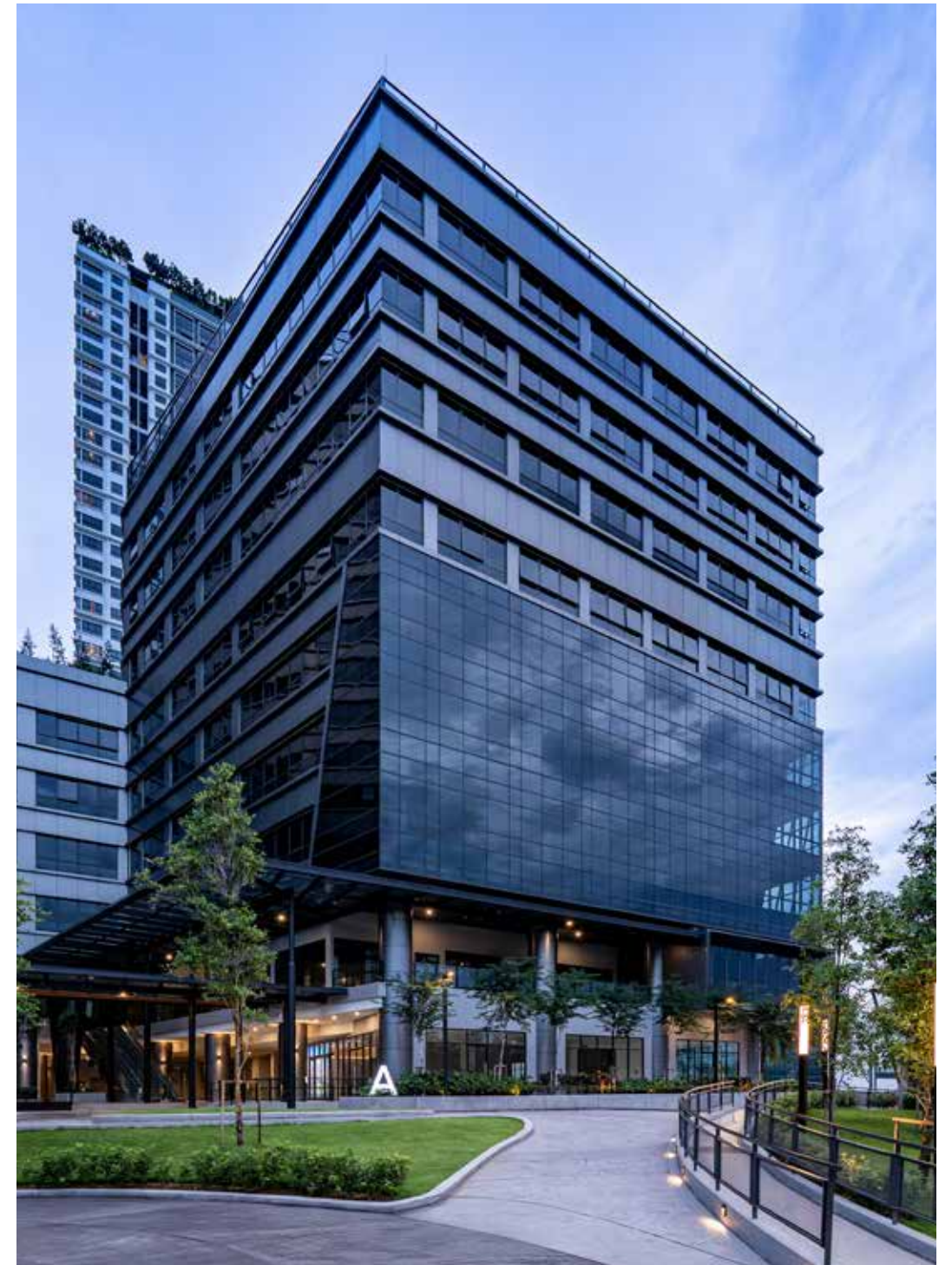
Architecturally, AtWater strikes a balance between aesthetics and functionality. Its contemporary skyline harmonises with surrounding greenery, while water elements enhance the tranquil ambiance. By integrating vibrant commercial spaces with peaceful residential living, AtWater creates a holistic environment where work, life, and leisure coexist effortlessly. This development isn't just a place to live—it's a thriving ecosystem designed for modern aspirations.



AtWater oleh Paramount Property Development ialah pembangunan bersepadu seluas 5.2 ekar di Petaling Jaya, menggabungkan kediaman dan komersial secara harmoni. Fasa 1 memperkenalkan unit kediaman yang direka teliti dengan kemudahan fasiliti seperti kolam renang, zon kecergasan, dan astaka yoga dalam landskap menghijau.

Fasa 2 membawa dimensi baharu dengan memperkenalkan ruang komponen penggunaan campuran yang lebih dinamik. Podium runcitnya menampilkan pelbagai kedai, pilihan tempat makan, dan hiburan yang memupuk interaksi komuniti. Di atasnya, dua menara pejabat Gred A yang diperakui hijau (8 dan 16 tingkat) menawarkan ruang kerja fleksibel bertaraf MSC untuk keperluan perniagaan moden. Penerapan reka bentuk mampan menonjolkan komitmen integrasi dengan alam sekitar.

Penerapan seni bina kontemporari, elemen air yang menenangkan, dan kehijauan sekeliling, AtWater mencipta ekosistem holistik di mana kerja, kehidupan, dan masa lapang bersatu dengan sempurna.





# The Atelier

Singapore

360 SOLUTION  
**Steven Low and Tong Su Ling**  
Architecture  
**Stanley Tan, Gary Soh and Ryan Lim**  
Wayfinding

The Atelier, a luxury residential development in Singapore’s District 9 near Newton, embodies contemporary elegance and functionality. The single-tower, 22-floor residence features sleek, minimalist architecture, emphasising clean lines and understated refinement. To elevate the living experience, IMMORTAL crafted a seamless wayfinding strategy that blends modern design with practical navigation.

Drawing inspiration from the residence's architectural palette, IMMORTAL incorporated earthy nutmeg tones, brushed metal, and glass into the signage design. Wayfinding elements, including signs at entrances, lift lobbies, and corridors, are paired with subtle spatial cues like lighting, material transitions, and architectural details. This thoughtful approach ensures intuitive navigation while reinforcing The Atelier's identity as a sophisticated, modern residence, offering residents and visitors a luxurious experience marked by elegance, comfort, and convenience.









ONG&amp;ONG Singapore

## MK Residence, Japan

ONG&amp;ONG Architecture

MK Residence spans 7,534 sqft in Nagano, Japan, seamlessly blending modern architecture with its natural surroundings. Built on a sloping plot next to a water catchment area, the house preserves the existing driveway and structures, concentrating its main construction on the left side to respect the land's integrity.

The design divides the house into two zones: a private wing and a communal/guest area. The private wing, accessible from the car park, features the principal and junior bedrooms, laundry, and storage spaces. A shared foyer with views of a central garden and pool connects this wing to the communal areas.



The guest zone includes an open-plan living, dining, and kitchen area, complemented by a wet kitchen, pantry, and a fireplace dividing the main and secondary sitting areas. This section opens to a timber deck and heated lap pool. Guest accommodations include a Japanese-style room and a suite with a private sitting area. Amenities like an onsen, indoor garden, and BBQ area enhance the guest experience.

The house's mixed-material structure blends steel and Japanese timber, with a simple roofline and closed facade for privacy. Its rear opens to embrace nature, offering a serene retreat that harmonises with its environment.





ONG&amp;ONG Singapore

## LR-House Singapore

Elita Ong Architecture

The allure of landed houses lies in their potential for personal expression, exemplified by LR-House. Situated on a corner lot, this three-storey home features lush greenery against an aluminium screen with a stylised forest pattern. Its L-shaped footprint preserves a mature tree, symbolising generational growth. Inside, an entertainment space overlooks a plunge pool, while a study and powder room face a Japanese-inspired zen garden.



The living and dining areas on the first floor connect to the pool and garden, incorporating the Japanese principle of Shakkei (borrowed view) to enhance natural surroundings. The second floor houses private spaces, including a luxurious master suite and children's bedroom, both with minimalist designs. The attic, converted into a guest bedroom, leads to a rooftop BBQ area, perfect for entertaining. Strategically placed green spaces and materials create a harmonious, nature-integrated living environment.







ONG&ONG Group

## BeyondX Lab, Keppel Road Singapore

360 SOLUTION

**Joe Fu, Tan Wei Sheng, Natasha Ten,  
Omar Shiddiq and Shawn Peck**

Architecture and Interior Design

**Stanley Tan, June Lee,**

**Gary Soh and Ryan Lim** Wayfinding

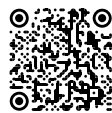
Located along Keppel Road, a formerly dated building is now BeyondX, Singapore's innovation incubator. The 360 Solution by ONG&ONG guided its metamorphosis, overcoming significant spatial and infrastructural challenges. The narrow floor plates inspired clever interventions: strategically placed quiet rooms create rhythmic pauses along the linear corridors, while a central pantry serves as a vibrant social hub. Level 3's exposed structural elements and modern M&E framework visibly celebrate the building's evolution from obsolete to cutting-edge.

The wayfinding system redefines user experience through bold architectural interventions. Oversized perforated aluminium supergraphics on the facade function as both navigational beacons

and striking visual identifiers. Internally, motivational wayfinding tags like "Be Bold" reinforce the brand's progressive ethos while guiding movement.

BeyondX's comprehensive branding extends across its ecosystem (BeyondX Lab, Symposium, Xpo) through a cohesive visual language of vibrant colours and dynamic typography. This identity manifests physically in bold facade treatments and digitally through integrated tech elements.

By transforming limitations into assets, BeyondX demonstrates how thoughtful adaptive reuse can create spaces that don't just house innovation, but actively catalyse it through every design decision—from spatial flow to wayfinding to brand expression.







Topgolf Jakarta adalah kompleks olahraga dan hiburan mutakhir yang dirancang oleh ONG&ONG.

Memadukan arsitektur modern dengan energi metropolis, kompleks seluas 3,5 hektar ini menampilkan bentuk tegas dan bersudut yang terinspirasi dari gerakan dinamis golf serta ritme kehidupan kota.

Secara prinsip, massa bangunan bertingkat tiga ini memiliki 102 *hitting bays* yang dilengkapi teknologi Toptracer, yang menawarkan pengalaman bermain golf yang interaktif. Desain open-plan menghubungkan area pemukulan dengan gerai F&B, lounge VIP, dan ruang serbaguna, sementara panel kaca

setinggi lantai menghadirkan pencahayaan alami dan konektivitas visual.

Desain fasad yang berlapis menyeimbangkan elemen solid dan transparan untuk estetika dan efisiensi energi. Pendekatan desain lansekap yang cermat memadukan tanaman hijau dengan ruang-ruang

fungsional, sekaligus mengurangi kebisingan dan polusi cahaya. Lebih dari sekadar tempat bermain golf, Topgolf Jakarta adalah destinasi gaya hidup—tempat di mana olahraga, arsitektur, dan interaksi sosial berpadu dalam pengalaman yang berkesan.

ONG&ONG Indonesia

## Topgolf Sports & Entertainment Complex Indonesia

**Kurjanto Slamet, Andhi Priatmoko, Ignatius Rahadiyanto Sumitro, Awly Muhammad Isra, April Noor, and Romli** Architecture

Topgolf Jakarta, located in the heart of Fatmawati, is a cutting-edge sports and entertainment complex designed by ONG&ONG. Blending modern architecture with urban energy, the venue spans 3.5 hectares and features a bold, angular form inspired by golf's motion and the city's dynamism.

At its core, the three-level venue houses 102 hitting bays powered by Toptracer technology, offering an interactive golfing experience. The open-plan design seamlessly connects the hitting bays with F&B outlets, VIP lounges, and event spaces, while full-height glass panels enhance natural light and visual connectivity.

A layered facade design balances solid and transparent elements for both aesthetics and energy efficiency. Thoughtful landscaping integrates greenery with functional spaces, minimising noise and light pollution. More than just a golfing venue, Topgolf Jakarta is a lifestyle destination, where sport, architecture, and social engagement converge in an immersive experience.









ONG&ONG Group

# Parochial House

Singapore

360 SOLUTION

**Joe Fu Zhuo and Tan Wei Sheng**  
Architecture

**Lena Quek** Landscape

Parochial House, a 112-year-old heritage building within St Joseph’s Church, has been beautifully restored after a seven-year conservation effort. Originally designed in Portuguese Baroque style with Gothic accents by Donald McLeod Craik, it once served as the Portuguese Mission’s headquarters and now functions as an annex with offices and residences for priests and staff.



The restoration preserved its encaustic floor tiles, nine sets of azulejo tiles, and key artefacts like the Bishop of Macau’s throne and an antique desk. A grand wooden staircase was meticulously restored, while a new lift and fire escape improved accessibility and safety.

Externally, the facades were repainted, statues were cleaned, and the five-foot way was raised to prevent flooding. Inside, a revamped layout maintains public spaces on the ground floor, offices on the second, and a chapel and priest accommodations on the third—blending history with modern functionality.





SCA Singapore

## Taipei Fubon Bank, Guoco Tower Singapore

**Elli Wang, Wafi Afandi and  
Cheyenne Chew** Workplace Interior

Taipei Fubon Bank's Singapore office by SCA Design, redefines corporate spaces with a warm, immersive, and collaborative environment. Located in the central business district, the office features an open-plan layout that fosters teamwork while offering sweeping city views.

A vibrant palette enlivens the space, with warm orange and teal seating in the pantry and lounge, complemented by light wood finishes and hanging greenery, creating a cozy yet modern feel. Boardrooms, in

contrast, adopt a formal aesthetic, with elegant orange leather chairs and soft lighting enhancing sophistication.

Biophilic elements, including moss and living walls, reinforce the bank's commitment to sustainability, while large windows flood the space with natural light, boosting employee well-being. Privacy screens balance open communication with focus, ensuring functionality. With a blend of modern aesthetics and thoughtful spatial planning, this office is a dynamic, inspiring workplace that merges style with purpose.





ONG&amp;ONG Singapore

## Tengah Bus Interchange Singapore

Josephine Loo and Khor Siew Hui

Architecture

Tengah Bus Interchange, a key development in Singapore's newest town, aligns with Tengah's "forest town" vision, blending lush greenery with modern infrastructure. Its biophilic design, featuring internal courtyards and green peripheries, enhances the naturally ventilated concourse, creating a welcoming commuter space.

Strategically located near residential areas, the interchange incorporates residential-style materials to foster a sense of community. Central communal areas encourage interaction, while 12 commercial units provide essential amenities in the growing estate. Clear wayfinding and open spaces ensure smooth pedestrian flow.



Designed to LTA's accessibility standards, the interchange caters to families, seniors, and those with mobility challenges, offering barrier-free access, priority seating, wheelchair-accessible toilets, and a baby care room. As Tengah's HDB estates are completed, pedestrian connections and green corridors will seamlessly integrate the interchange into the community, reinforcing its role as a central hub in Tengah's urban landscape.



ONG&amp;ONG Singapore

## Jurong Town Hall Bus Interchange Singapore

Wendy Tan, Wang Lai Meng, Ryan

Teo and Khor Siew Hui Architecture

Jurong Town Hall Bus Interchange, located along Venture Drive sports a modern two-storey layout that accommodates high passenger volumes with 41 bus bays, retail shops, and commuter facilities, offering a seamless experience for daily commuters.

The design harmonises with its surroundings through earthy-toned granolithic floor patterns and a green-themed exterior. Accessibility was a key focus, with enhancements for visually handicapped commuters. Collaborating with the Singapore Association of the



Visually Handicapped, ONG&ONG incorporated spacious waiting areas and improved wayfinding elements to ensure ease of movement.

Retail spaces are cleverly integrated on both floors, with a unique island-shaped shop in the first-floor concourse, a creative solution to overcome space constraints. On the second floor, elongated shop layouts maximise the available site space.

A standout feature is the complex, three-dimensional folded ceiling panels that conceal structural elements and serve as a visual guide for commuters. The demountable ceiling and roof allow easy maintenance of underground sewer pipes, while the green roof and seamless ceiling joints contribute to both the aesthetics and functionality of the interchange. This thoughtful design blends practicality with architectural innovation.







ONG&ONG Vietnam

## Happy One Central Vietnam

**Hoang Huu Dung, Huynh Viet Hoang,  
and Duong Ngoc Duc** Architecture

Thu Dau Mot, the capital of Vietnam's Binh Duong Province and part of Ho Chi Minh City's metropolitan area, is booming with investment and growth as such Happy One Central was created to welcome both locals and expats seeking premium living. Designed by ONG&ONG Vietnam, the 40-storey towers are the tallest in Binh Duong, featuring a sky bridge offering breathtaking views of the cityscape.

The masterplan combines Asian-inspired design with Vietnamese cultural elements, addressing the tropical climate and Feng Shui principles to optimise light and ventilation. Highlights include facade lighting that creates a "fairy tale garden" effect at night, a 3D golf course, infinity pool, aerial cinema, and more.

Happy One Central merges innovation with luxury, offering residents an affluent, modern lifestyle in the heart of a rapidly developing region.

Thủ Dầu Một, thủ phủ của tỉnh Bình Dương và là một phần của vùng đô thị Thành phố Hồ Chí Minh, đang bùng nổ với các dòng vốn đầu tư và tốc độ phát triển mạnh mẽ. Happy One Central ra đời để chào đón cả cư dân địa phương và người nước ngoài tìm kiếm một cuộc sống đẳng cấp. Được thiết kế bởi ONG&ONG Vietnam, tòa tháp 40 tầng này là công trình cao nhất tại Bình Dương, với sky bridge mang đến tầm nhìn toàn cảnh thành phố ngoạn mục.

Thiết kế tổng thể kết hợp phong cách châu Á với các yếu tố văn hóa Việt, đồng thời tối ưu hóa ánh sáng và thông gió phù hợp với khí hậu nhiệt đới và nguyên tắc Phong Thủy. Điểm nhấn bao gồm hệ thống chiếu sáng mặt tiền tạo hiệu ứng "khu vườn cổ tích" về đêm, sân golf 3D, hồ bơi vô cực, rạp chiếu phim trên không, và nhiều tiện ích khác.

Happy One Central là sự kết hợp giữa đổi mới và sang trọng, mang đến cho cư dân lối sống hiện đại, đẳng cấp ngay tại trung tâm một khu vực đang phát triển nhanh chóng.



ONG&ONG Group

## Thiso Mall Truong Chinh - Phan Huy Ich Vietnam

360 SOLUTION

**Hoang Huu Dung and Huynh Viet Hoang**

Architecture

**Dang Hoang Tung** C&S Engineering

**Ryan Huynh Ngoc Nghia** M&E Engineering

Thiso Mall Truong Chinh - Phan Huy Ich, designed by ONG&ONG, is a modern retail hub in Ho Chi Minh City's bustling Go Vap, District 12, and Tan Phu districts. Spanning 161,458 sqft., the mall comprises two blocks—a four-storey building housing Emart supermarket, a cinema, and a conference centre, and a two-storey car showroom.

The mall's striking glass, steel, and concrete facade exudes a sleek, modern aesthetic, with a transparent glass canopy welcoming visitors. Inside, open spaces, wide corridors, and atriums enhance the shopping experience, while strategically placed escalators and elevators ensure smooth circulation.

Retail spaces feature high ceilings and customisable storefronts, maximising visibility and foot traffic. Common areas incorporate indoor greenery, modern furnishings, and attractions like a musical fountain and mascot emblem, creating a vibrant, family-friendly destination that seamlessly blends functionality with contemporary design.



Thiso Mall Trường Chinh - Phan Huy Ích do ONG&ONG thiết kế là trung tâm thương mại hiện đại tọa lạc tại khu vực sầm uất quận Gò Vấp, quận 12 và Tân Phú, TP.HCM. Với diện tích 161.458 feet vuông, trung tâm bao gồm hai khối nhà: một tòa nhà 4 tầng gồm siêu thị Emart, rạp chiếu phim và trung tâm hội nghị, cùng showroom ô tô 2 tầng.

Mặt tiền ấn tượng làm từ kính, thép và bê tông toát lên vẻ đẹp tinh tế, hiện đại, với mái vòm kính trong suốt chào đón du khách. Bên trong, không gian mở, hành lang rộng

và giếng trời tối ưu trải nghiệm mua sắm, trong khi hệ thống thang cuốn và thang máy bố trí hợp lý đảm bảo lưu thông thuận tiện.

Các gian hàng được thiết kế trần cao và mặt tiền có thể tùy chỉnh, tối đa hóa tầm nhìn và lượng khách tham quan. Khu vực chung kết hợp cây xanh trong nhà, nội thất hiện đại cùng các điểm nhấn như đài phun nước nhạc nước và biểu tượng linh vật, tạo nên một điểm đến sôi động, thân thiện gia đình - nơi kết hợp hài hòa giữa công năng và thiết kế đương đại.







ONG&ONG Malaysia

## Cora, Eco Ardence Malaysia

**Hasbullah bin Abdullah and  
Suhana binti Sulaiman** Architecture

Launched in 2019 as part of Eco Ardence, a joint venture between EcoWorld and Cascara Sdn Bhd, Cora offers modern landed homes designed by ONG&ONG. Comprising 146 units, the development blends contemporary and zen-inspired architecture, featuring clean lines, minimalist finishes, and natural materials that create a warm, inviting atmosphere.

Cora, dilancarkan pada tahun 2019 sebagai sebahagian daripada Eco Ardence, usahasama antara EcoWorld dan Cascara Sdn Bhd, menawarkan rumah berangkai moden yang direka oleh ONG&ONG. Dengan 146 unit, pembangunan ini menggabungkan seni bina kontemporari dan berinspirasi Zen, menampilkan garis reka bentuk yang bersih, kemasan minimalis serta bahan semula jadi yang mencipta suasana hangat dan mesra.

Disusun dalam kelompok kejiranan, Cora memupuk semangat komuniti melalui ruang hijau, taman, kawasan

permainan dan taman komuniti yang menggalakkan interaksi sosial. Kawasan ini mengutamakan kelestarian dengan infrastruktur mesra alam untuk pengangkutan, pengurusan sisa dan penjimatan air. Walaupun menghadapi cabaran akibat pandemik, pasukan ONG&ONG berjaya menguruskan pembinaan secara jarak jauh sambil mengekalkan jadual dan memastikan projek siap tepat pada masanya.

Cora mewakili gaya hidup moden yang menawarkan kepelbagaian, individualiti serta gaya hidup yang berkaitan dengan kesedaran ekologi dan perhubungan komuniti.



Organised into neighbourhood clusters, Cora fosters a sense of community, with green spaces, parks, playgrounds, and communal gardens encouraging social interaction. The estate prioritises sustainability with eco-friendly infrastructure for transport, waste management, and water conservation. Despite pandemic-related challenges, the ONG&ONG team successfully managed construction remotely, maintaining timelines and ensuring project completion. Cora embodies modern living, offering variety, individuality, and a lifestyle of connectivity and eco-consciousness.



ONG&ONG Malaysia

## Nara Townhouses, Eco Ardence Malaysia

**Hasbullah bin Abdullah and  
Wan Zuraihi bin Wan Muhammad**

Architecture

Phase 3 of the Eco Ardence development introduces the Nara Collection, featuring 80 units of 4-storey townhouses designed by ONG&ONG. These homes blend Japanese-inspired design with modern living, adorned with sleek black accents and nestled within lush greenery. The collection consists of Garden Homes and Courtyard Homes, offering a unique, spacious layout that maximises design, convenience, and connectivity.

ONG&ONG faced challenges with coordinating shared infrastructure, managing space allocation, and aligning floor levels due to road changes. The team also ensured seamless integration of Phase 3's architecture with Phases 1 and 2. The Nara Collection supports a live-work-play environment, offering residents the perfect balance of modern urban living and natural tranquillity, with recreational, retail, and dining options within walking distance.



Fasa 3 Pembangunan Eco Ardence memperkenalkan Nara Collection, menampilkan 80 unit townhouse 4 tingkat yang direka oleh ONG&ONG. Rumah-rumah ini menggabungkan reka bentuk berinspirasi Jepun dengan kehidupan moden, dihiasi dengan aksen hitam yang elegan dan dikelilingi lanskap hijau yang subur. Koleksi ini terdiri daripada Garden Homes dan Courtyard Homes, menawarkan susun atur unik dan lapang yang memaksimumkan reka bentuk, kemudahan dan ketersambungan.

Pasukan ONG&ONG menghadapi cabaran dalam menyelaraskan infrastruktur bersama, mengurus peruntukan ruang, dan menyelaraskan aras lantai akibat perubahan jalan raya. Mereka juga memastikan integrasi lancar seni bina Fasa 3 dengan Fasa 1 dan 2. Nara Collection menyokong persekitaran 'live-work-play', menawarkan keseimbangan sempurna antara kehidupan urban moden dan ketenangan alam, dengan pilihan rekreasi, runcit dan makan minum dalam jarak berjalan kaki.





ONG&amp;ONG Malaysia

## ONG&ONG Kuala Lumpur Office Malaysia

**Tan Kee Keat, Mohd Faizal Natilan,  
Rajinderjit Singh and Mohd Hazam Mohid**

Architecture

The relocation of ONG&ONG Malaysia's office marks a strategic move toward greater collaboration and connectivity, consolidating the team onto a single floor. Previously spread across two levels, the unified workspace enhances interaction, aligning with the company's commitment to teamwork and innovation.

Designed with a sophisticated natural palette, the interior exudes understated elegance. Circular lighting fixtures and geometric elements add visual interest while reinforcing the brand identity. The symmetrical layout is anchored by a stone-backed reception desk, complemented by warm tones and rich textures for a luxurious ambience.

Beyond aesthetics, the office prioritises functionality and flexibility. A suite of client-facing meeting rooms and a conference room feature smart glass panels etched with mountain peaks named after the company's founders. For privacy, these panels turn opaque when the room is lit.



In the workspace, versatile zones empower staff to customise their surroundings. Huddle rooms, open-plan desks, and a central collaboration table foster agility and productivity, ensuring the space supports modern work dynamics. The office includes a pantry for social interactions and a nursing room for new mothers.



Inspired by Berlin Art, the design incorporates minimalist aesthetics with clean lines, neutral tones, and bold pops of colour. Large windows provide natural light, while semi-private alcoves offer spaces for relaxation and group work. The open-plan layout and varied seating create a stimulating environment, while playful elements and greenery add personality and warmth.

This multi-purpose hub reflects GESS's commitment to a dynamic and flexible learning environment, supporting students both socially and academically.



SCA Singapore

## GESS Social Hub Singapore

**Elli Wang, Wafi Afandi and  
Cheyenne Chew** Workplace Interior

The German European School Singapore (GESS) recently underwent a refurbishment to transform an existing space into a vibrant social hub for high school students and the university counselling department.

SCA Design was tasked with creating a welcoming, functional space that fosters interaction, creativity, and learning. The new hub features distinct areas for socialising, studying, and collaboration, and to allow students to engage with university counsellors and visiting representatives in a more casual environment.







The design features prominent alphabetical building identifiers for clear navigation, supported by colour-coded zones and blocks for orientation. The BCA logo is subtly etched on each sign, reinforcing brand consistency. A standout design element is the use of parametric ribbing on signage, adding a futuristic and modern aesthetic.

Sleek vehicular signage pylons with inset lighting provide both functional guidance and visual appeal. Complementing these elements are branded place-making features that create a unique spatial narrative, improving navigation and reinforcing BCA's brand identity throughout the visitor journey.



IMMORTAL Singapore

## BCA Braddell Campus Singapore

**Stanley Tan, Gary Soh and  
Ryan Lim** Wayfinding

IMMORTAL reimagined the wayfinding system for the BCA Braddell Campus, enhancing navigation and visitor experience. The project involved a unified vehicular and pedestrian wayfinding system, grounded in a cohesive branding strategy reflecting BCA's identity and vision.



IMMORTAL Singapore

## Odeon Singapore

**Stanley Tan and Gary Soh**

Wayfinding

Odeon, a mixed-use development by UOL Group, comprises Odeon 331 (formerly Odeon Towers) and Odeon 333. In 2021, UOL redeveloped part of Odeon Towers into a standalone seven-storey office building, Odeon 333, with a striking 50m frontage along North Bridge Road. This enhancement boosted visual appeal, accessibility, and increased the total lettable area by 22.9% to 22,551 sqm.

IMMORTAL was engaged to design a wayfinding strategy, integrating clear signage, digital directories, and minimalist brown-and-gold aesthetics. The system includes wall-mounted, freestanding, and ceiling-mounted signs, ensuring seamless navigation for both pedestrians and drivers. The design emphasises luxury, functionality, and intuitive movement, creating a user-friendly experience while reinforcing the building's contemporary identity.





Rankine&Hill Singapore

## Sengkang West Bus Depot Singapore

**Rankine&Hill** M&E Engineering

The Sengkang West Bus Depot is a multi-storey facility designed to enhance bus operations in northeast Singapore, ensuring efficient public transport services. Rankine&Hill undertook the M&E Engineering, covering design, construction, installation, and commissioning of mechanical and electrical systems.

Spanning five storeys plus a roof level, the depot features workshops and maintenance facilities on the first level, while upper floors provide parking for over 200 electric buses, making it future-ready for EV adoption. Given its high power demand, the depot includes provisions for mobile generators to ensure operational continuity.

Fire safety is a key priority, with a foam suppression system and zoned water curtains to prevent fire spread. Additionally, an eight-storey living quarters offers co-living spaces for bus captains, designed with pandemic-driven spatial planning.

Awarded the BCA Green Mark Platinum, the depot improves fleet management, enhances efficiency, and supports Singapore's long-term public transport infrastructure growth.



Rankine&Hill Singapore

## Parc Central Singapore

**Rankine&Hill** M&E Engineering

Located in the heart of Tampines, Parc Central is an Executive Condominium designed for modern living, blending elegance, functionality, and sustainability. This expansive development features 11 sleek, 16-storey blocks, thoughtfully positioned to maximise natural light and ventilation, creating an airy, comfortable environment.

At its core, Rankine&Hill's M&E Engineering expertise ensures seamless integration of energy-efficient systems, from HVAC solutions for indoor comfort to strategic lighting that enhances both communal and private spaces.

Beyond its architectural and engineering excellence, Parc Central offers vibrant communal spaces, including swimming pools, fitness areas, and a landscaped deck, fostering a strong sense of community. Thoughtfully designed for both relaxation and connection, it redefines urban living. More than a home, Parc Central is a lifestyle—where contemporary design, innovation, and community come together in perfect harmony.







Rankine&Hill Singapore

## Khatib Polyclinic Singapore

**Rankine&Hill** M&E Engineering

Khatib Polyclinic is a modern healthcare facility designed to meet the growing needs of the community. The ninth polyclinic under the National Healthcare Group Polyclinics, it focuses on delivering quality primary healthcare and is part of the nation's larger initiative to enhance and expand medical services.

Rankine&Hill played a pivotal role in this project, overseeing the M&E engineering works that are essential to the building's functionality and comfort. The team was responsible for installing a suite of mechanical and electrical systems that ensure that day-to-day operations run smoothly, considering the



unique nature of healthcare delivery in Singapore including local regulations, tropical design requirements, international healthcare design guidelines and specifications, and drawing on best practices worldwide.

Special attention was given to the sustainability aspect of the M&E works, incorporating energy-efficient solutions that reduced the polyclinic's operational costs while maintaining optimal comfort for both patients and staff. The combined efforts have made Khatib Polyclinic a state-of-the-art facility, designed to deliver top-tier healthcare services in a safe and efficient environment.



Rankine&Hill Singapore

## Ki Residences Singapore

**Rankine&Hill** M&E Engineering

Ki Residences, a joint venture by Hoi Hup Realty and Sunway Development, spans 340,107 sqft and is thoughtfully designed for privacy, ventilation, and exclusivity. With blocks aligned side by side—ensuring no units face each other—the development offers a rare blend of comfort, nature, and community, complemented by its low-rise surroundings.

For this ambitious project, Rankine&Hill provided M&E Engineering expertise, ensuring seamless integration of sustainable and future-ready solutions. The electrical systems were designed for efficiency, safety, and modern technological needs, while EV charging provisions in the basement reflect a commitment to green mobility. Smart building technologies further enhance connectivity and convenience.

Through meticulous planning and execution, Rankine&Hill's M&E solutions have played a key role in transforming Ki Residences into a modern yet eco-conscious living environment, where sustainability and innovation go hand in hand.





Rankine&amp;Hill Singapore

## The Watergardens at Canberra Singapore

Rankine&amp;Hill M&amp;E Engineering

The Watergardens at Canberra is a lush urban retreat in northern Singapore, featuring 16 low-rise blocks housing 448 exclusive units seamlessly integrated with nature. Designed for modern comfort, the development prioritises sustainability and efficiency, with Mechanical & Electrical engineering by Rankine&Hill. Its energy-efficient lighting, intelligent cooling, and water management systems enhance eco-friendliness and living quality.



To optimise construction productivity, the project employs Prefabricated Prefinished Volumetric Construction (PPVC), ensuring efficiency and high-quality results. Residents enjoy a wide range of amenities, including three function rooms, outdoor pavilions, a 50m lap pool, a children's pool with a water slide, jacuzzi loungers, and cabana decks. Unique features like the Savory Gardens and Harvest Pavilion offer dedicated spaces for workshops and urban farming.

Strategically located near Canberra MRT station, The Watergardens combines seamless city connectivity with a tranquil, nature-inspired living environment, making it an ideal sanctuary for modern lifestyles.



Rankine&amp;Hill Singapore

## Harmony Village @ Bukit Batok Singapore

Rankine&amp;Hill M&amp;E Engineering

Harmony Village @ Bukit Batok is Singapore's first Community Care Apartment development, designed to promote independence and support for seniors. A collaboration between the Ministry of National Development, Ministry of Health, and HDB, the 169-unit housing project offers senior-friendly apartments with wheelchair-accessible bathrooms, grab bars, and smart digital locks linked to an activity centre for enhanced security. Residents benefit from 24-hour emergency monitoring, health checks, and social activities, with optional housekeeping and meal catering services.

As the M&E Engineering consultant, Rankine&Hill played a key role in integrating efficient power distribution, lighting, air-conditioning, and ventilation systems while ensuring sustainability through solar panels, rainwater harvesting, and high-efficiency HVAC solutions. Smart home features enhance safety and autonomy for residents.

Beyond providing comfortable, modern housing, Harmony Village embodies Singapore's vision of sustainable, senior-friendly urban living, blending care, convenience, and environmental responsibility in a tranquil yet connected setting.







*For a home framed by nature, **never compromise.***

Tampines GreenVines

Singapore  
An ONG&ONG Project





# DRIVING CHANGE WITH ECO-FRIENDLY ARCHITECTURE

From nature-inspired materials to cutting-edge technologies, sustainable architecture is transforming the way we build.

In a world grappling with climate change and environmental degradation, the built environment industry has a pivotal role to advocate for eco-conscious architecture, which has emerged as a powerful response to environmental challenges. By reimagining the way we design and build, this movement is shaping a greener future, proving that functionality, aesthetics, and environmental stewardship can co-exist harmoniously.

At the heart of this movement lies creativity, which extends beyond aesthetic appeal to address functionality, resource efficiency, and resilience. Creativity in sustainable architecture often involves drawing inspiration from nature. This concept, known as biomimicry, enables architects to design buildings that emulate natural processes and structures. For example, the Eastgate Centre in Harare, Zimbabwe, utilises a passive cooling system inspired by termite mounds —slashing energy needs while adapting seamlessly to its climate.

## THE SHIFT TOWARDS THE ECO-CONSCIOUS

The shift towards eco-conscious architecture reflects a growing demand for sustainable living. People seek spaces that enhance well-being, reduce environmental impact, and connect with nature. While sustainability may seem like a modern concept, it has deep historical roots—early human settlements typically use locally sourced materials and passive design for comfort.

With climate concerns at the forefront, sustainable design is now integral to modern building practices. Cities and rural areas alike are embracing structures that balance functionality with environmental responsibility, redefining how we shape our built environments. At its core, eco-conscious architecture is about materials—whether traditional or cutting-edge, they are the foundation of a greener future.

## BAMBOO

Bamboo, often called "green steel," has been a staple in architecture for centuries, particularly in Asia. With its rapid growth, renewability, and exceptional strength-to-weight ratio, it is an eco-friendly alternative for both traditional and modern construction. Beyond being biodegradable, bamboo sequesters carbon dioxide, enhancing environmental sustainability.

Architects worldwide are embracing bamboo's potential. In Vietnam, the Vinpearl Project, which is the welcome centre of the Grand World Phu Quoc master plan was constructed using 42,000 bamboo pieces. Likewise, Bengaluru's Kempegowda International Airport's new Terminal 2 integrates bamboo in ceilings and pillars, creating a seamless connection with nature while meeting sustainability standards. These projects highlight bamboo's viability for large-scale architecture, blending tradition with innovation.



# BAMBOO



## 3D PRINTING

In the face of rising construction costs, one promising development is 3D printing. From reducing waste to enabling the use of recycled and local materials, 3D printing is offering solutions that could revolutionise the way buildings are created. 3D-printed architecture offers several key benefits, including lower construction costs and faster building times. By accurately calculating material requirements, it minimises waste, making construction more affordable. The speed of 3D printing is another major advantage. Homes can be printed in a matter of days, reducing construction time from months to just hours.

Thailand's Siam Cement Group (SCG) has recently completed the largest 3D printed building in ASEAN, a new medical centre with a total floor area of 345 sqm spread over two storeys. Located in Saraburi, Thailand, the project is the first two-storey 3D printed building in ASEAN and the first 3D printed medical centre in the world.

# 3D PRINTING



## KENAF

## SYNTHETIC SPIDER SILK

## SELF-HEALING CONCRETE

## BIOCHAR CLADDING

### THE WAY WE BUILD TODAY WILL DETERMINE THE WORLD WE LIVE IN TOMORROW

With climate concerns driving the demand for eco-conscious solutions, architects and engineers are turning to nature for inspiration. These breakthroughs are not just reducing environmental impact—they are redefining the very essence of architecture.

#### KENAF

Kenaf is emerging as a game changer in sustainable construction. This fast-growing plant offers a renewable, cost-effective alternative to traditional materials. It absorbs significant carbon dioxide, reducing greenhouse gases, while its lightweight yet durable fibres make it ideal for construction.

Kenaf is used in thermal and acoustic insulation, roofing, and wood composites, promoting sustainability while reducing deforestation. In Malaysia, Affordable Abodes use Kenafcrete®, a biocomposite made from locally grown kenaf, to produce prefabricated panels for low-income housing. These lightweight, modular panels lower costs by reducing labour and construction time, making eco-friendly housing more accessible.

#### SYNTHETIC SPIDER SILK

Often hailed as the “super material of the future,” spider silk is inspiring sustainable architecture. Derived from the properties of actual spider silk and fabricated using just water, silica and cellulose, the resulting synthetic spider silk is stronger than steel yet incredibly lightweight and completely biodegradable. Its potential applications range from structural components to interior designs.

#### SELF-HEALING CONCRETE

Concrete has long been a cornerstone of construction, but its environmental impact is significant. Self-healing concrete is changing the narrative by using bacterial reactions to repair cracks, extending the material's lifespan and

reducing maintenance needs. This innovation minimises carbon footprints and ensures durability, aligning with sustainable building practices.

#### BIOCHAR CLADDING

Berlin-based startup Made of Air is pioneering biochar-based bioplastic cladding, a carbon-negative material created from agricultural and forestry waste. This innovative material captures more carbon dioxide than it emits and is fully recyclable. From building facades to furniture, biochar cladding demonstrates how waste can be transformed into a sustainable resource, contributing to a circular economy.

#### BARRIERS TO ECO-FRIENDLY ARCHITECTURE

The evolution of eco-conscious architecture is being driven by innovations that merge sustainability with cutting-edge technology. Together, these advancements are reducing reliance on non-renewable resources and shaping a more sustainable future for the built environment.

Despite its promise, eco-conscious architecture faces significant challenges, including high costs, limited material availability, and slow industry adoption. According to Ahmad Syazli, Director of Architecture at ONG&ONG Malaysia, while sustainable architecture is gaining traction in Malaysia, the perception of higher upfront costs for green materials and technologies—many of which are imported and require specialised expertise—deters developers, particularly those catering to low- to moderate-income buyers.

“Eco-friendly projects can cost up to 30% more due to energy-efficient technologies, sustainable materials, and green certifications, discouraging developers and homeowners despite the long-term savings,” Syazli explained.

Buyers often prioritise immediate affordability over future energy savings,

further reducing demand for sustainable options. Additionally, the lack of local expertise and limited access to green technologies continue to hinder widespread adoption. Ahmad Syazli emphasises that overcoming these barriers requires a multi-faceted approach.

“We must prioritise public awareness campaigns, provide financial incentives to offset upfront costs, and invest in local knowledge and technology. By addressing these challenges, Malaysia can foster a greener building sector that benefits both the environment and its residents,” he added

A promising solution lies in Mass Engineered Timber (MET), an emerging material with the potential to revolutionise sustainable construction. While MET offers exciting possibilities for sustainable construction, Gary Soh, a Senior Project Manager at IMMORTAL, highlights that its adoption comes with unique considerations.

Unlike conventional timber, engineered wood requires careful handling—improper drilling or cutting can compromise its structural integrity. Furthermore, because it is still relatively new to the built environment, finding engineers qualified to assess its properties remains a hurdle, limiting widespread adoption despite its potential as an innovative, sustainable building material.

“Mass Engineered Timber is paving the way for sustainable and innovative construction, motivating us to embrace new knowledge and refine our approaches to fully realise its potential,” he noted.

Eco-conscious architecture is more than a trend; it is a necessity in the face of environmental challenges. Architects and designers must continue to prioritise sustainability, ensuring that our built environments nurture both humanity and the planet.



ONG&ONG

THIS IS  
MALAYSIA.

ONG&ONG 360 Consultancy Sdn Bhd

Unit 1A-07, Blok 1A, Plaza Sentral,  
Jalan Stesen Sentral 5,  
50470 Kuala Lumpur, Malaysia

group.ong-ong.com

WO  
RK  
PL  
ACE

Delivering  
people-centric  
spaces that  
empower  
personnel  
performance  
now and into  
the future.



- Building Studies
- Workplace Studies
- Space Planning
- Interior Design
- Project Management
- Sustainability
- Turn Key Solutions



We are thrilled to  
design environments  
that inspire  
creativity while  
remaining practical.  
Elli Wang, CEO

sca-design.com



# Creating Ripples of Change by Empowering Potential & Enriching Communities

Empowering communities, nurturing talent, and driving sustainability—the ONG Foundation’s impactful initiatives across education, health, the arts, and environmental stewardship.

“There are those who give with joy, and that joy is their reward.”  
— Khalil Gibran

## ONG Foundation

The ONG Foundation, established in 2012, is dedicated to fostering positive change across three core pillars: Education, Health, and the Arts. Rooted in a commitment to empowering individuals and communities, the Foundation seeks to address critical societal needs by supporting initiatives that inspire growth, innovation, and well-being. Its mission is not just to provide resources but to create opportunities that enable people to unlock their potential and contribute meaningfully to society. By focusing on these interconnected areas, the ONG Foundation aims to build a more equitable and vibrant future, where access to quality education, healthcare, and cultural enrichment is within reach for all. At its heart, the ONG Foundation embodies a spirit of collaboration and forward-thinking and in doing so, the ONG Foundation continues to weave a legacy of hope, resilience, and progress, reflecting its unwavering dedication to making a difference in the world.

## PHILANTHROPY

### GoFlow Empowers Communities in Cambodia and Nigeria with Clean Water Solutions

GoFlow is making a transformative impact in rural communities across Cambodia and Nigeria by providing access to clean drinking water. In Cambodia, GoFlow has partnered with the Water and Healthcare (WAH) Foundation to address the lack of potable water in Kampong Chhnang, a province home to 550,000 people. Several GoFlow have already been installed in Krang Dey Meas district and Kampong Chhnang city, with plans to expand further to improve villagers’ lives.

Meanwhile, in Nigeria, Olam Agri’s Safe Water Project is leveraging GoFlow purifiers to bring clean water to farming communities across 12 locations in Kano, Jigawa, Nasarawa, and Kaduna States. This initiative has already benefited over 43,000 people, reducing water-fetching time for women, boosting farmer incomes, and decreasing waterborne diseases. Together, these efforts highlight how sustainable solutions like GoFlow can empower communities, improve health, and strengthen local economies.

goflow



### ONG Foundation Director Participates in Uzbekistan Ultramarathon to Champion Underprivileged Children

The 230 for 230: Uzbekistan Ultramarathon 2025 is a transformative initiative aimed at empowering 230 underprivileged children from families facing significant challenges, including parental incarceration. Funds raised through this event will support the NeuGen Fund, a member of The Community Action for the Rehabilitation of Ex-Offenders (CARE) Network. This alliance of Social Service Agencies (SSAs) and Government Organisations is dedicated to community engagement, coordinating aftercare efforts, and improving services for ex-offenders and their families. The funds will enable programs focused on academic success, mental well-being, and personal growth. On April 26, participants—including ONG Foundation Director Ong Tze Boon and Executive Chef Loris Massimini of Ristorante Pietrasanta and La Pizzaiola—will embark on a gruelling 230km, six-stage ultramarathon along Uzbekistan’s historic Silk Road, from Samarkand to Nurata. Traversing valleys, deserts, and villages, runners will stay in yurts, immersing themselves in the region’s rich cultural heritage. Rooted in sustainability and community impact, this initiative goes beyond endurance—it’s a journey to unlock the potential of children in need.

## GREEN INITIATIVE

### Charge+ Accelerates Southeast Asia’s EV Revolution with Strategic Expansions and Partnerships

Charge+, Southeast Asia’s leading EV charging operator, is making significant strides in advancing the region’s electric mobility ecosystem. Fuelling this growth is its recent \$8 million Series A funding, led by TRIVE Venture Capital and TNB Aura. This investment will drive regional expansion, supported by roaming partnerships with Malaysia’s TNB, Thailand’s EGAT, and Indonesia’s PT PLN, as Charge+ works toward deploying 30,000 charging points globally by 2030.

## Expanding Regional Footprint

In Vietnam, Charge+ has partnered with Porsche to develop a 1,700km EV charging network, deploying 17 ultra-fast DC charging sites by mid-2027. The first nine sites, offering speeds up to 180 kW, will launch in key cities like Hanoi, Ho Chi Minh City, Haiphong, and Danang by mid-2025. Two high-performance sites are already operational at Porsche Studio Hanoi and Porsche Centre Saigon. Additionally, Charge+ is enhancing Vietnam’s EV infrastructure with new DC fast-charging stations in Hai Phong and Nha Trang. A 120kW station at Cat Bi Plaza and a 60kW station at Citadines Bayfront Nha Trang, a sustainability award-winning hotel, now improve connectivity between Hanoi and Ho Chi Minh City.



In Thailand, Charge+ has teamed up with Ch.Pattana, the country’s leading electric taxi operator, to build a robust fast-charging infrastructure supporting Ch. Pattana’s growing fleet of 200 electric taxis. This collaboration underscores Charge+’s commitment to sustainable mobility in the region.

In Cambodia, Charge+ has partnered with ABA Bank to boost EV adoption through seamless payment integration and low-rate financing for charging station installations. This collaboration aligns with Charge+’s plans to establish Cambodia’s first EV charger manufacturing facility, driving the nation’s transition to greener mobility.

In Singapore, Charge+ has solidified its leadership by acquiring 140 chargers from eChargz, QuickCharge, and PaC Components, bringing its network to around 2,500 charging points. This move strengthens its market dominance amid tighter LTA regulations, such as \$2 million insurance and real-time data sharing requirements.

Charge+’s participation in EVM Asia 2024, held in Kuala Lumpur, Malaysia, further highlighted its innovative solutions. CEO Goh Chee Kiong emphasised Southeast Asia’s growing demand for EV infrastructure, showcasing Charge+’s commitment to driving the region’s sustainable mobility revolution. As Charge+ continues to expand its network and forge strategic partnerships, it remains at the forefront of Southeast Asia’s transition to a greener, more sustainable future.



## ONG&ONG CEO Shares Vision of Bringing Singapore's Affordable Housing Model to Vietnam

At a recent seminar titled “Experience in Implementing Social Housing Projects: Lessons from Singapore for Vietnam,” organised by the Association of Architects of Ba Ria – Vung Tau Province, David Ching Heng Ho, CEO of ONG&ONG Vietnam, shared insights on social and affordable housing. Drawing from Singapore’s globally recognised public housing system, David emphasised Vietnam’s potential to achieve similar success with proper planning. Since arriving in Vietnam in 2001, he has identified affordable housing as a critical need and urged architects to design for the common people. David also expressed ONG&ONG’s commitment to supporting Vietnam’s goal of delivering one million social housing units by 2030.



## ONG&ONG’s Director of Architecture, Jim Phan Thanh Tuan, participated in the Design Dialogue 2

At last year’s V Mark Vietnam Design Week, Jim Phan Thanh Tuan, Director of Architecture at ONG&ONG Vietnam, took part in the Design Dialogue 2 panel titled “Tech Driven. Eco Conscious.” The session brought together industry leaders to explore innovative, sustainable design solutions that leverage technology to address environmental challenges. Jim shared insights on how integrating cutting-edge technologies with eco-conscious principles can transform the built environment, emphasising the importance of balancing functionality, aesthetics, and sustainability. The discussion highlighted the role of architects and designers in driving environmental awareness and creating solutions that not only meet current needs but also safeguard the planet for future generations.

## IMMORTAL Presents at the Design Alliance Asia Annual Event in Vietnam

The Design Alliance Asia (tDAA) held its annual Asia Meet in September 2024, at Hanoi University of Civil Engineering (HUCE) in Vietnam. Hosted by Pham Huyen Kieu and Haki Group, the event featured the keynote seminar The Rise of Asia, exploring the regional and global impact of Asian designers. IMMORTAL Brand Director Stanley Tan and Senior Creative Consultant June Lee showcased the consultancy’s global projects in an exhibition of Asian design. Attendees, including industry leaders and students, engaged in discussions, discovered new works, and explored collaborative opportunities across Vietnam and the region.



## IMMORTAL’s Emeric Lau Shares Insights on Dementia-Friendly Wayfinding at the SIA-CSR Talk Series

The Singapore Institute of Architects’ CSR Committee hosted a sharing session, “Designing for Inclusivity - Singapore: Universal City in The Making,” focusing on creating accessible spaces for people with disabilities, seniors, families, and diverse cultural backgrounds. Speakers shared insights and projects to inspire inclusive design practices. Emeric Lau from IMMORTAL discussed “Designing for the Elderly and Dementia Patients,” detailing the process of developing a tailored wayfinding strategy through expert consultations, resident research, and site studies.



## Jerome Tan's Insights on Lighting - Balancing Brightness and Comfort at Home

In October 2024, lighting designer Jerome Tan was featured on Channel 8’s Chinese evening news, sharing expert tips on home lighting. He stressed the importance of proper lighting for aesthetics, visual comfort, and mental well-being, recommending softer lighting for living spaces to create relaxation and brighter lighting for productivity in workspaces. Jerome also highlighted how adjusting fixtures based on room functions can enhance atmosphere and promote a balanced home environment.



## ONG&ONG Group Sponsors Three Swimmers to Paris Olympics

ONG&ONG is proud to have sponsored three exceptional Singaporean swimmers — Amanda Lim, Letitia Sim, and Levenia Sim— on their inspiring journey to qualify for the 2024 Paris Olympics. These athletes have demonstrated unwavering dedication, discipline, and passion in their pursuit of representing Singapore on the world’s biggest sporting stage. Amanda Lim, a seasoned swimmer and multiple SEA Games medallist, showcased remarkable determination throughout her campaign, narrowly missing out on qualification. Meanwhile, sisters Letitia and Levenia Sim achieved a significant milestone by securing their spots in the prestigious global event. Their success not only marks a proud moment for their athletic careers but also serves as an inspiration to aspiring athletes. ONG&ONG is honoured to have supported these swimmers, reinforcing its commitment to nurturing talent and contributing to the nation’s sporting achievements.





# ONG&ONG

ONG&ONG Group Pte Ltd

510 Thomson Road  
11-03 SLF Building  
Singapore 298135

[group.ong-ong.com](http://group.ong-ong.com)

THIS IS  
SINGAPORE.

# LIGHTING

Efficient,  
evocative, and  
essential - our  
lighting specialists  
direct the eye  
towards, across,  
and beyond  
each plane and  
perspective.



Good lighting does  
not shout: it is a  
balance of subtle  
illuminance, achieving  
spaces that feel right.

Jerome Tan, Associate



Architectural Lighting  
Equipment Cost Control  
Operational Cost Control  
Lux Level Calculations  
Lighting Controls  
Lighting Audits

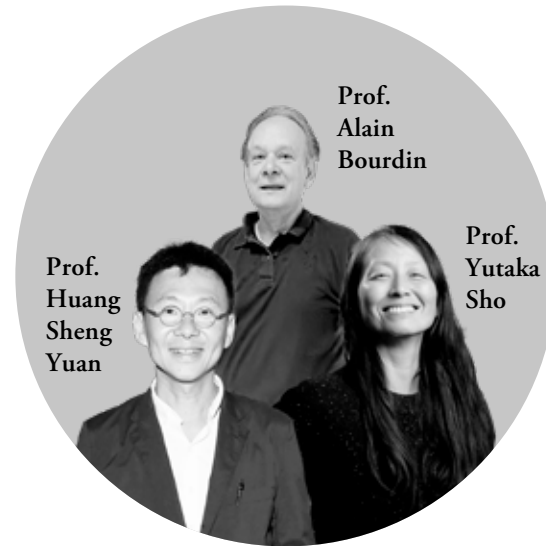


[ong-ong.com](http://ong-ong.com)



# OSM Professorship and Travelling Fellowship 2025

From distinguished visiting professors to aspiring architects on global fellowships, ONG&ONG and NUS cultivate a dynamic architectural dialogue that blends heritage, sustainability, and progressive design.



Established in 2000, the Ong Siew May (OSM) Professorship has been a cornerstone of architectural education at the National University of Singapore (NUS), bringing eminent practitioners to lecture and inspire students and faculty. Over the years, the program has hosted a roster of distinguished architects, each contributing unique insights and expertise that have shaped the discourse on contemporary architecture.

In 2025, the OSM Professorship continues this legacy with an exceptional lineup of visiting professors: Prof. Alain Bourdin from the French Institute of Urbanism, Prof. Huang Sheng-Yuan of Field Office Architects, and Prof.

Yutaka Sho from Meiji University and General Architecture Collaborative.

Prof. Bourdin, a leading figure in urbanism, will share his expertise on urban planning and heritage from January to May 2025. Prof. Huang, renowned for his human-centric approach to architecture, will bring his innovative perspectives from January to April 2025. Prof. Sho, known for her collaborative and interdisciplinary work, will contribute her insights on contemporary architectural practices during the same period.

Together, these esteemed professors will inspire innovative thinking and enrich

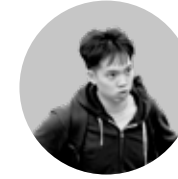
the academic environment, ensuring that the OSM Professorship remains a vital platform for advancing architectural education and practice. Through lectures, workshops, and interactive engagements, the professors will spark meaningful conversations on the evolving challenges and opportunities in architecture. Their varied knowledge will not only broaden the academic discourse at NUS but also nurture a new generation of architects to redefine the built environment.

Complementing the Professorship is the ONG&ONG Travelling Fellowship, an initiative that empowers aspiring architecture

students to explore the world, gain firsthand insights into various architectural practices, and bring back innovative ideas to shape the future of the built environment. By immersing themselves in different cultures, landscapes, and design philosophies, these young architects are not only expanding their own horizons but also contributing to the global discourse on architecture and urban design.

The 2023 and 2025 awardees—Glen Ang, Forbes Tee, Darren Teo, Lee Teng Long, and Zikry Nasrullah—exemplify the spirit of this fellowship, each embarking on unique journeys that reflect their passions and aspirations.

**Glen Ang**  
(2023 Awardee)



Glen Ang used the fellowship to explore the Netherlands, a country renowned for its cycling infrastructure. His journey between Delft and Rotterdam revealed the seamless integration of cycling into urban and rural landscapes, offering a new perspective on sustainable transportation. Glen's experience highlighted how cycling-centric urban planning can transform cities, inspiring him to rethink transportation hierarchies in future architectural projects. His travels underscored the importance of experiencing design firsthand, broadening his understanding of how different cultures adapt architecture to their unique contexts. Glen's research on the Netherlands' cycling culture has provided him with practical insights that he hopes to apply to Singapore's urban planning, advocating for more inclusive and sustainable transportation systems.

**Zikry Nasrullah**  
(2025 Awardee)



Passionate about the intersection of art and architecture, Zikry Nasrullah will explore mosques in Switzerland, examining how they adapt to restrictive local laws while serving as vibrant community hubs. His research will highlight innovative architectural adaptations, culminating in an independent publication that contributes to the discourse on Islamic architecture.

Through their travels, these young architects not only advance their own education but also contribute to a broader, more inclusive architectural narrative. The combination of the OSM Professorship and the ONG&ONG Travelling Fellowship ensures that architectural education at NUS remains dynamic, globally connected, and deeply relevant, shaping the next generation of architects to be both visionary and grounded in real-world complexities.

**Forbes Tee**  
(2023 Awardee)



Forbes Tee, another 2023 awardee, ventured across the European Union to study architecture in culturally and geographically distinct settings. His time at Delft University of Technology deepened his appreciation for sustainability, materiality, and circular design. A memorable discovery was the concept of "restless" architecture, exemplified by mechanical drawbridges in the Netherlands, which adapt to their environment over time. Forbes' journey reinforced his belief in the importance of a broad worldview, shaping him into a more informed and sensitive designer. His exploration of European architectural practices has inspired him to integrate sustainable and adaptive design principles into his future projects, aiming to create spaces that are not only functional but also responsive to the evolving needs of their users.

**Darren Teo**  
(2025 Awardee)



Darren Teo will explore Nepal's Langtang Valley, where Tibetan Buddhist influences shape architecture in a mountainous setting. His research examines how religious beliefs intertwine with daily life and design, uncovering ways tradition and modernity can co-exist. By engaging with local communities, he aims to develop culturally rooted yet forward-thinking design strategies that foster inclusive and sustainable built environments.

**Lee Teng Long**  
(2025 Awardee)



Lee Teng Long explores sustainable design, inspired by Singapore's green urban landscapes. His fellowship takes him to Italy and Barcelona to study the balance between historic preservation and modern functionality. Examining Milan's vertical forests and Barcelona's superblocks, he will also assess the impact of events such as the 1992 Olympics on urban transformation. His research aims to inform sustainable, community-centric urban planning in Singapore and beyond.



ONG&ONG

THIS IS  
MONGOLIA.

ONG&ONG Design LLC

Residence 60, Unit 13-07, 4th Khoroo,  
15th Khoroolol Peace Auv 8B,  
Ulaanbaatar 13345, Mongolia

group.ong-ong.com

# WAY FIND ING

Enabling users  
of every stripe  
to navigate the  
built environment  
with ease - we  
deliver seamless  
and intuitive  
experiences.

IMMORTAL  
Brand Engagement

- Planning and Analysis
- Wayfinding Strategy
- Signage System and Design
- Environmental Graphics
- Placemaking



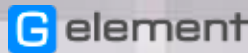
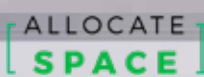
Intuitive wayfinding  
is the invisible thread  
that ties the user  
experience together.  
Stanley Tan, Director

immortal.com.sg



# THE LAB THAT'S SHAPING TOMORROW, TODAY

A revolution is brewing  
at 21 Keppel Road.  
BeyondX Lab is where  
blockchain meets concrete,  
AI shakes hands with  
architecture, and startups  
reach beyond imagination.



BeyondX Lab is a forward-thinking convergence of innovation, sustainability, and collaboration. Originally conceptualised as an event to disrupt the built environment industry, BeyondX has since evolved into a living lab and incubation hub—one that redefines how future-forward technologies are developed, tested, and scaled.

Today, BeyondX is more than a space—it's a curated ecosystem connecting startups with venture capitalists, government agencies, and academia. The lab offers a springboard for ideas in technologies, smart facilities, immersive computing, and energy management through accelerators, hackathons, and proof-of-concept trials that empower incubatees

to test real-world applications, co-create solutions, and engage with industry leaders.

At its core, BeyondX operates as a living laboratory where AI, immersive computing, and blockchain solutions converge to ignite tangible change. Its three-phase alchemy refines visions, secures funding, and deploys solutions in real-world smart environments.

**Meet the Innovators Powering the BeyondX Living Lab**

At BeyondX, innovation comes to life through a curated group of pioneering companies.

**Allocate Space** is on a mission to help businesses connect their resources, assets, and spaces to AI through its IoT platform, enabling the assurance of processes with real data. The platform grants access control, automates room bookings with lighting control, and has space utilisation analytics that turns physical environments into intelligent, responsive, and data-driven spaces.

**MYRLabs** enhances spatial intelligence through cutting-edge indoor navigation and robotics solutions, enabling seamless, intelligent movement within complex spaces.

**GoRental** supports sustainability with portable battery pack rental services, ensuring on-demand energy access for mobile lifestyles and temporary setups.

**G Element** specialises in 3D visualization for smart building management platforms, offering comprehensive digital twins and real-time situational awareness for property and facility managers.

**RogerRoger** enables high-precision 3D scans of physical spaces, enabling virtual TOP and immersive virtual walk-throughs.

**Casambi** revolutionises smart lighting through wireless control solutions, creating highly flexible, scalable, and energy-efficient lighting ecosystems within the lab and beyond.

Together, these innovators transform BeyondX into a living, breathing demonstration of how smart

infrastructure, IoT, and immersive technologies are reshaping the future of the built environment.

Critical to the innovation backbone is a strong tech stack. With SPTel delivering low-latency resilient fibre infrastructure and AWS providing cloud PoC credits and resources, startups at BeyondX gain the digital horsepower to scale demonstrable prototypes and solutions into full-fledge commercial products.

Members enjoy more than coworking spaces; they gain access to a network of venture capitalists, government agencies, and academic partners that can turn ideas into market-ready solutions.

BeyondX truly comes alive during its events, with 2025 marking a major milestone with the annual BeyondXpo and symposium set to become a tech carnival.

What makes BeyondX extraordinary isn't its tech, but its humanity. It's where seemingly far-fetched ideas inspire breakthroughs through mentorship from seasoned founders. Where corporate innovators collaborate with daring bootstrappers to solve problems neither could tackle alone. Ultimately, the future is being realised here, one prototype at a time.

To become a member of BeyondX Lab, visit <https://bit.ly/beyondxmember>.



# ONG & ONG

THIS IS  
INDONESIA.

PT ONG and ONG

Grha Niaga Thamrin 1st Floor Unit A1  
Jl. K.H. Mas Mansyur Kebon Melati,  
Tanah Abang Jakarta Pusat 10230, Indonesia

group.ong-ong.com

# INT ER IOR

Our spaces are  
designed to  
excite, soothe,  
and inspire  
the mind,  
empowering form  
and function in  
equal measure.



Advisory & Consultancy  
Feasibility Study  
Master Design Guidebook  
Space Planning  
Test Fit  
Turn Key Solutions



Exploring new  
materials, embracing  
nature, and drawing  
from diverse influences  
to spark creativity  
in design.

Teo Boon Kiat, Director

ong-ong.com





360 Solution Specialist

# Workplace Interior

Designing the perfect corporate interior goes beyond simply creating functional workspaces. Although aesthetic quality and style are a must, the environment must be synergistic and inspirational. After all, productivity is the name of the game.

At SCA Design, we go beyond traditional interior design, challenging existing conventions associated with working environments. Our team combines in-depth building and workplace studies alongside input from the client and the end user. Space planning is employed in tandem with flawless interior design, resulting in turnkey work spaces that exemplify the ideal vision of the modern office.



**ABeam Consulting**  
Singapore **Commerce**

The client wanted an interior that reflects cosiness, comfort, and homelike vibes. SCA designed and delivered a space where colleagues can connect, collaborate, and thrive by focusing on things like simplicity and minimising clutter.



**Taipei Fubon**  
Singapore **Commerce**

Blending modern aesthetics with smart spatial planning, this office redefines corporate interiors with an open-plan layout and vibrant accents creating an inviting, collaborative environment that balances style with purpose.



**Hitachi Vantara**  
Singapore **Commerce**

Drawing inspiration from the infinity symbol to form a looping flow, the space is designed around how people move while maximising opportunities to build connections. Seamlessly connecting the space to the brand, SCA applied the firm's corporate colours for the interior.



**Financial Institution**  
Singapore **Commerce**

With an earthy colour palette that synthesises its spaces like a well-rehearsed symphony, this Financial Institution's interior combines two contrasting ambiances, defining the different spaces within the office.



**Social Media Office Expansion**  
Singapore **Commerce**

The selection of materials accurately underscore the local context, where the design language of the surrounding architecture as influenced by a culture or era, is subtly translated through shapes, colours and patterns.



**GESS Social Hub**  
Singapore **Civic**

A vibrant social hub with zones for studying, socialising, and collaboration. Inspired by Berlin Art, the space blends clean lines, bold colours, natural light, and greenery to create a welcoming, creative, and functional environment.



**Tcube**  
Singapore **Commerce**

Tcube, a hybrid multi-use space bringing together technology and tourism, was designed with interiors that offer a dynamic environment where users would be inspired to explore, share and discover.

Building Studies

Workplace Studies

Space Planning

Interior Design

Project Management

Sustainability

Turn Key Solutions



www.sca-design.com



360 Solution Specialist

# Engineering

Beneath the veneers of colours, curved lines and textures of dazzling designs are the hidden machinery and mechanisms that make everything possible. Inventive engineering becomes the basis through which creativity is transformed from imagination and turned into living, breathing reality.

With decades of experience in the industry, Rankine&Hill consultants have collaborated on some of the most iconic building designs in Singapore and beyond. From Mechanical & Electrical (M&E) to Civil & Structural (C&S), as well as Fire Safety and Environmental Solutions, we continue to deliver a full range of comprehensive engineering solutions that are not only functionally sound, but also safe and green.



**Apple Jewel Changi Airport**  
Singapore **Lifestyle**

The Apple store uses innovative engineering, including a custom slab system for increased headroom, and features a striking curved façade and minimalist interior designs.



**Sengkang Bus Depot**  
Singapore **Civic**

Rankine&Hill handled the M&E engineering, covering design, construction, installation, and commissioning of all mechanical, electrical systems, and specialised equipment for this self-contained, multi-storey bus depots with five levels and a rooftop with solar panels.



**Dyson Global HQ**  
Singapore **Commerce**

The historic St. James Power Station building has been redesigned as Dyson's new Global headquarters in Singapore with a gross floor area of 110,000 sqft.



**One Holland Village**  
Singapore **Commerce**

A vibrant mixed-use development blending homes, offices, retail, and green spaces. Thoughtful landscaping, pocket parks, and eco-friendly features create a tranquil, sustainable urban hub that enhances community living and well-being.



**Sentosa Outpost Village Barracks Hotel**  
Singapore **Lifestyle**

The integration of three hotels – Outpost Hotel, Village Hotel and Barracks Hotel at Singapore's hallmark island resort was the product of meticulous M&E engineering.



**The Ascent**  
Ho Chi Minh City, Vietnam **Domicile**

The 30-storey residential development required specific C&S engineering demands, which were executed seamlessly.



**Parc Clematis**  
Singapore **Domicile**

Rankine&Hill provided M&E expertise, working closely with the client to balance performance, comfort, sustainability, and wellness, creating a well-rounded residential environment that meets both functional needs and aspirational goals.

Mechanical

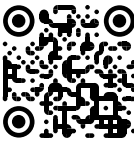
Electrical

Civil

Structural

Fire Safety

Environmental



www.rankine-hill.com





360 Solution Specialist

# Project Management

Ensuring projects are well organised and cohesively executed is at the core of our business. Project management is more than connecting the right people or assembling the ideal team. Our goal is to make sure projects are efficiently executed and as cost-effective as possible.

The process is a practical one. First, the objectives and parameters of a given project are properly ascertained, followed by careful planning and mapping, to ensure complete alignment and efficiency throughout the construction phase. For us, success means a stress-free experience for our clients.

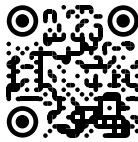
Project Management

Project Development

Construction Management

Cost Management

Place Management



www.proj-innovations.com



**HDB Jurong Jewel**  
Singapore **Domicile**

The vision for Jurong West Jewel revolves around sustainability, community, and aesthetics. By applying rigorous planning and adhering to strict deadlines, Project Innovations managed and oversaw its completion.



**Singapore General Hospital Emergency Medicine Building**  
Singapore **Civic**

Boasting four times the space of its predecessor, the 12-storey emergency medicine building includes rooms to handle disease outbreaks and mass casualty incidents, while improving response efficiency.



**Upgrading of Existing Schools under Peri Package**  
Singapore **Civic**

The targeted enhancement of educational facilities island-wide has necessitated coordinated project management to oversee the improvement of numerous schools.



**Curtin Singapore**  
Singapore **Civic**

One of the challenges the team at ONG&ONG Group faced was the space limitation as the new campus is quite compact. Interior design, placemaking, and wayfinding play important roles.



**Lotte Duty Free, Changi Airport**  
Singapore **Commerce**

This project involved the transformation of 20 stores in Changi Airport after Lotte was named the new operator of the Liquor and Tobacco concessionaire.



**Swiss Garden Hotel**  
Kuala Lumpur, Malaysia **Lifestyle**

Project management services were provided for the remodelling of the 320 guestrooms and lobby, sporting a new warm green colour palette.



**Curtin Singapore**  
Singapore **Civic**

One of the challenges the team at ONG&ONG Group faced was the space limitation as the new campus is quite compact. Interior design, placemaking, and wayfinding play important roles.



360 Solution Specialist

# Project Solutions

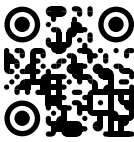
Construction is a messy business. To have every component gel together like clockwork requires a reliable source to handle each aspect of a project meticulously. Moving in tandem with the cultures and developmental processes of countries in and around Asia keeps us ahead of the competition with technological advancements and synergistic results – this is true integration.

Construction

Design & Build

Turn Key Solutions

Contract Works



www.proj-xion.com



**Classic British Luxury Brand**  
Worldwide **Lifestyle**

A classic British luxury brand engaged our quantity surveying and cost management services for its flagship stores in Korea and Japan.



**BBR by Alain Ducasse**  
Singapore **Commerce**

The Michelin-starred restaurant by Chef Alain Ducasse required project management services for the installation of a circular structure in its new premises in Raffles Hotel.



**Howards Storage World**  
Singapore **Commerce**

A rebranding exercise and an aesthetic revamp resulted in a one-stop shop solution that promises a fuss-free consumer experience.



**Bali International Airport**  
Bali, Indonesia **Commerce**

A holistic range of services were provided, including local design implementation, cost, construction and project management, culminating in the delivery of 22 luxury retail outlets.



**Lotte Duty Free, Changi Airport**  
Singapore **Commerce**

This project involved the transformation of 20 stores in Changi Airport after Lotte was named the new operator of the Liquor and Tobacco concessionaire.



**Alodd**  
Singapore **Commerce**

A turnkey solution for the client, this project comprised the creation and delivery of a pop-up store in Centrepoint shopping mall.



**Intercontinental Jakarta**  
Jakarta, Indonesia **Lifestyle**

The global hotel chain's Jakarta property was given a fresh look with local design implementation, project management and construction management.



IMMORTAL

Brand Engagement

360 Solution Specialist

# Brand Engagement

Brand Engagement is an analytical process, but also one that requires much imagination. It is about crafting experiences that foster relationships between brands and consumers. With 35 years of experience and a client list brimming with household names, IMMORTAL has branding programmes that have helped many clients grow their businesses. Offering services including Market Insight, Brand Audits, Strategy, Expression and Management, IMMORTAL is committed to helping your brand create an authentic and enduring identity.



**BeyondX**  
Singapore **Commerce**

BeyondX is an integrated technology aggregator that brings together partners and industry players. It also holds events for technology experts to share their insights with a wider audience.



**The Collection**  
Bangkok, Thailand **Domicile**

The Collection predicates the interiors and brand story on four fictional characters, the Traveller, the Thinker, the Trendsetter and the Collector – personas that resonate well with the target audience of these bijou luxury units.



**BenTOK**  
Singapore **Commerce**

Created for a private catering chef, the BenTOK brandmark draws inspiration from the blue pea flower, which is used as a natural food colouring in Peranakan cooking.



**Montigo Resorts**  
Batam, Indonesia **Lifestyle**

The brand identity was inspired by a “Three Stepping Stones” visual hallmark that emphasises both proximity to Singapore and the ability to accommodate multigenerational families.



**South Beach**  
Singapore **Commerce**

An integration of modern and conserved architecture, SouthBeach comprises two gently curved towers housing offices, a JW Marriott hotel, and residences. The SouthBeach brandmark traces the towers’ and canopy’s distinctive architectural form.

Market Insight

Brand Audit

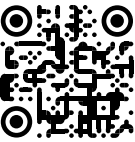
Brand Strategy

Brand Expression

Brand Management

Environmental Branding

Digital Branding Solutions



www.immortal.com.sg



**Jalan Besar**  
Community Engagement  
Singapore **Civic**

This commissioned survey evaluated residents’ needs in terms of the estate’s facilities. It comprised data gathering drives both online and in-person, to determine action points for the Town Council.



**M Social**  
Singapore **Lifestyle**

A brand book was assembled to entice real estate developers to partner with the M Social brand. The eye-catching design captures the brand’s story, personality, and hallmarks.

IMMORTAL

Brand Engagement

360 Solution Specialist

# Environmental Wayfinding

Effective wayfinding means delivering assurance at every point of a journey. It is a system of signs and symbols to enable easy navigation. No matter the complexity, IMMORTAL’s primary objective is to make every space more user-friendly. Wayfinding has the capacity to optimise and enhance the built environment, improving circulation, connectivity and use of space.

Planning and Analysis

Wayfinding Strategy

Signage System and Design

Environmental Graphics

Placemaking

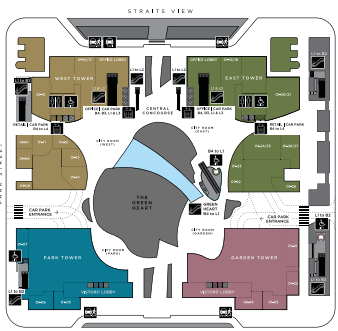


www.immortal.com.sg



**Marina One**  
Singapore **Commerce**

The signage and wayfinding was designed to help visitors navigate within the basement level of the four towers and also as a way to attract traffic from the street level and neighbouring buildings into the retail podium.



Colour coding the four blocks makes it easier for visitors to find their way through the basement levels.



**Rochester Commons**  
Singapore **Commerce**

For this mixed-use development, the IMMORTAL team was engaged to design a wayfinding strategy that creates seamless connectivity between buildings and spaces.



**Odeon Tower**  
Singapore **Commerce**

A cohesive wayfinding system for Odeon 331 and 333 features minimalist signage, clean lines, and bold contrasts to enhance visibility. Seamlessly integrated with the towers’ sleek architecture, it balances practicality and aesthetics to guide visitors effortlessly through key spaces.



**Dementia-Friendly Wayfinding**  
Singapore **Domicile**

This signage and wayfinding project provides a fresh look to the neighbourhoods while serving its primary function of ensuring the ageing population will easily find their way home, with the assistance of easily identifiable icons and colour schemes.



**Kallang Park**  
Connector Underpasses  
Singapore **Commerce**

IMMORTAL devised placemaking elements and environmental branding for the new underpasses to add aesthetic appeal and reference the history of the river. The team based the idea for the thematic environmental graphics upon a retelling of the river’s timeline.



**BCA Braddell Campus**  
Singapore **Civic**

The BCA Braddell Campus wayfinding system was revamped with cohesive branding, clear alphabetical markers, and color-coded zones. Featuring parametric ribbing and subtle logo etching, the design enhances navigation while reflecting BCA’s identity with a modern, future-ready aesthetic.



**South Beach**  
Singapore **Commerce**

Augmenting the end-user experience is an environmental wayfinding system with an impressive digital directory that guides visitors throughout the property.



**The Park Hyderabad**  
Hyderabad, India **Lifestyle**

Drawing from the iconic building façade, the wayfinding system enhances the visual appeal of the stay experience.





360 Solution Specialist

# Experience Design

Experience Design is about evolving the way we interact with the world around us. It is about altering human experiences through the process of design thinking, where we imagine and conceive in terms of utility to better serve our needs. Human experiences are in constant flux, where improvement, progress and advancement unfold and develop over time – ultimately leaving us better positioned today than we were before. At ONG&ONG, we believe in design thinking and the impact that it brings. For our award-winning Experience Design team, the goal is to find ways to elevate and improve an experience or a process. Whether it's a minor tweak or something completely reimaged, all the projects we work on share a common objective: making the end-user experience better.



## Gardens Shop at Botanic Gardens

Singapore **Lifestyle**

This series of shops is drawing visitors to the Botanic Gardens with its thoughtful play on Singapore's rich colonial history and lush tropical greenery, showcasing a retail concept that encapsulates the legacy of Singapore's first UNESCO World Heritage Site.



## SilverKris Lounge

Worldwide **Lifestyle**

Singapore's premier airline, SIA, renowned for promising its customers "A great way to fly", worked on translating this promise into their lounge experience, reconceptualising comfort, luxury and personalised service for their premium passengers.



## SaladStop!

Singapore **Lifestyle**

The salad chain is set to encourage healthy and responsible eating through vibrant colours and playful artwork across its premises, creating a unique dining experience that engages customers.



## FRANK by OCBC

Singapore **Lifestyle**

FRANK by OCBC was an exercise in reimagining a financial service relevant to youths, both online and offline. Innovative design solutions were employed to create a banking experience that caters to the millennial generation.



## HDB Home Purchasing & SERS Experience

Singapore **Commerce**

This was a one-of-a-kind opportunity to rethink the user experience of purchasing a flat, evolving the online, physical and process touchpoints to redefine a public service offering.



## Changi Cove

Singapore **Lifestyle**

Changi Cove was envisioned as a retreat that appeals to guests looking for a short getaway to relax, refresh and be inspired. Today, Changi Cove remains a favourite destination for many personal as well as corporate retreats.



oxd.ong-ong.com

User Experience Strategy

Design Consulting

Design Thinking

Ethnographic Research



360 Solution Specialist

# Landscape

The modern built environment is increasingly characterised by the integration of nature. Regardless of typology and scale, projects today aim to include greenery wherever possible. ONG&ONG's track record of award-winning projects underscores the importance we place on landscape design. From biophilic environments and naturalistic designs, to the creation of sustainable microclimates, our landscape team optimises the use of greenery to benefit and enhance the built environment.



## Artzyen Singapore

Singapore **Lifestyle**

Artyzen Singapore features lush tropical greenery as one of the signature elements. Spaces are interconnected, adorned with lush greenery, and provide an exclusive garden experience.



## The Creek @ Bukit

Singapore **Domicile**

A redevelopment of the former Green Lodge, the landscaping scheme has enlivened the development's perimeter and interiors, extending the sense of greenery from the nearby Bukit Timah Nature Reserve.

## Frasers Tower

Singapore **Commerce**



Featuring a retail podium beneath the office tower, greenery was extensive throughout the development, including a verdure-rich rooftop poised for events.



## Heartbeat@Bedok

Singapore **Civic**

Originally a public park, this groundbreaking community building features intricate landscape design encompassing an abundance of indoor and outdoor green spaces.



## Opal Riverside Park

Ho Chi Minh City, Vietnam **Civic**

Inspired by water, the landscape design for this project evokes its coursing movements, flow and vitality.



## Yishun Nature Park

Singapore **Civic**

Envisioned as a community focal point, the park prioritises eco-friendly practices and contains an impressive variety of local flora.



## New Tech Park NTP+

Singapore **Commerce**

The addition of a new bijou mall, NTP+, transforms this light industrial development into a new and exciting urban node with retail and F&B components for the largely residential neighbourhood.

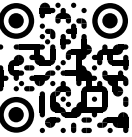
Masterplanning

Space Planning

Blue & Green Solutions

Sustainability

Playground Design



www.ong-ong.com



## Tampines Green Foliage

Singapore **Domicile**

Envisioned to be a green haven, the landscape embodies the aspiration of living in a leafy environment. Shared green spaces strengthen a growing sense of neighbourliness and community living.



## St. Joseph's Church

Singapore **Civic**

A subtle landscaping scheme of trees and shrubs enhances the building's exterior, complementing the natural motifs in the decorative relief work and carvings found in the building.





360 Solution Specialist

# Lighting

Lighting design is crucial, yet too often overlooked. Lighting highlights and accentuates a space, besides altering the ambience or mood of a given setting, bringing life, warmth and more to any environment. Lighting has the capacity to transform a mundane project into a superb one, where the right mix of shadow, light and colour enhances the end-user experience. Bright or low-key, fluorescent or neon, simple or intricate, we at ONG&ONG fully appreciate the importance of lighting design for any project.



**State Courts of Singapore**  
Singapore **Civic**

Functional illumination is implemented throughout the building. The courtrooms and offices benefit from a specific luminance capacity for an optimal lighting level, while shared public circulation areas feature atmospheric illumination.



**Heartbeat@Bedok**  
Singapore **Civic**

The lighting design complements the architectural form. Lush greenery and warm interior illumination shape the overall appearance of the integrated complex. The lighting also creates a comfortable and safe environment for the residents at night.



**Alex Residences**  
Singapore **Domicile**  
As one of the tallest buildings in the area, the lighting design accentuates the futuristic décor on the sky terrace, while highlighting the bold interplay of greenery.

**Indian Heritage Centre**  
Singapore **Civic**  
Standing as a glowing beacon above the surrounding urban tapestry, the building's socio-cultural significance is highlighted through subtle and soft lighting.

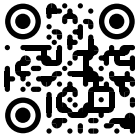


**Pollen & Bleu**  
Singapore **Domicile**  
Lighting highlights the lush landscape by creating dappled light and shadows, forming a dramatic interplay of flora at night.



**Mon Jervois**  
Singapore **Domicile**  
Lighting brings attention to the sophistication of this residential project by accentuating its refined features.

- Architectural Lighting
- Equipment Cost Control
- Operational Cost Control
- Lux Level Calculations
- Lighting Controls
- Lighting Audits



www.ong-ong.com



**Trinity Christian Centre**  
Singapore **Civic**  
With the use of dynamic colour-changing floodlights, the lighting enhancement greatly impacts the building and surroundings by creating a vibrant and lively atmosphere.



**V On Shenton**  
Singapore **Commerce**  
The lighting design reflects the unique geometrical patterns on this iconic building. The lighting scheme also enables greater energy savings.



360 Solution Specialist

# Interior Design

Residential or commercial, public or private, interior design is crucial no matter the project. From forming the heart of a home to setting the tone for a corporate or professional environment, the quality of a space is realised through interior design.

Be it functionality or comfort, luxury or utility, ultimately the manner in which we conceive a space influences its purpose. ONG&ONG's interior design experience runs the gamut of typologies and scales, with awardwinning projects the world over as proof of our ability to truly define any space.



**Hyatt Regency Hotel Jaipur**  
Jaipur, India **Lifestyle**

With traditional Moorish arches and detailed stone columns, this unique hotel houses 250 rooms and a host of amenities.



**Oakwood Suites ChongLi**  
ChongLi, China **Lifestyle**

Guests will find serenity amidst the sleek, modern interiors of this resort, whilst taking in unobstructed views of rolling greens and scenic mountains in the vicinity.



**Bedok Public Library**  
Singapore **Civic**  
Exuding warmth through its garden-inspired furniture, fixtures and innovative wayfinding, the library's functional design strategy ensures a conducive learning place for all ages.



**Seoul Club**  
Seoul, South Korea **Commerce**

This recreational venue was given a trendy makeover that employed a contemporary design scheme with a timeless presence, supported by utilitarian planning strategies to address modern needs and improve space allocation.



**Uniqlo**  
Ho Chi Minh City & Hanoi, Vietnam **Lifestyle**  
The spatial experience at Uniqlo's flagship stores in Parkson Dong Khoi and Vincom Pham Ngoc Thach is elevated with clean, contemporary designs that reflect the brand's minimalist appeal.



**American International Hospital**  
Ho Chi Minh City, Vietnam **Civic**  
Specific interiors were chosen to provide a calming environment for both patients and visitors, with clean designs that bring the surrounding nature indoors and deliver a premium experience.

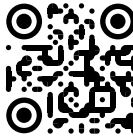


**Sycamore**  
Binh Duong, Vietnam **Domicile**  
Thoughtfully designed with colours and textures that evoke a sense of familiarity and warmth, Sycamore enables residents to fully connect with nature. Its open layout dissolves the boundary between indoors and outdoors, creating a consistently peaceful atmosphere.



**Wesley Hall Refurbishment**  
Singapore **Civic**  
Wesley Hall is equipped with a fully automated lighting system and mist-making machine, evoking a concert experience for all worshippers. While tri-colour benches elevate the seating experience and increase the hall's capacity.

- Advisory & Consultancy
- Feasibility Study
- Master Design Guidebook
- Space Planning
- Test Fit
- Turn Key Solutions



www.ong-ong.com





360 Solution Specialist

# Masterplanning

Masterplanning is essential in forging a sense of community and identity, building towns based on critical thought processes and ensuring efficiency of movement between spaces for the populace. Cities rely on experienced planners when creating infrastructure masterplans. The process of conceptualisation demands imagination and a progressive mindset. There is a plethora of considerations, including the accessibility to services such as education and places of worship in relation to traffic flow, residential areas, lifestyle and commercial hubs. A well-designed city is future-proof and able to cater to the evolving needs of its inhabitants for decades.



**Swan City and Swan Bay**  
Ho Chi Minh City, Vietnam **Dwelling**

The enclave epitomises exclusivity and grandeur; its massive scale is rendered possible through a well-conceived master plan. The homes and accompanying facilities all feature French architecture.



**Sala City**  
Ho Chi Minh City, Vietnam **Dwelling**

Harmoniously planned with unique commercial, residential, retail and hospitality developments within Ho Chi Minh City, Sala City exemplifies the efforts of synchronous planning and embodies the vision of nature-inspired living complemented by modern conveniences.



**Samyan Business Town**  
Bangkok, Thailand **Commerce**

This greenfield development is centred on a multi-purpose building complex that fulfils both residential and business needs, consisting of a hotel, retail blocks and an eight-storey condominium.



**Niseko Serviced Apartments & Clubhouse**  
Niseko, Japan **Lifestyle**

Consisting of luxury villas, private Japanese baths and a wellness centre, along with an omakase dining room and a central clubhouse, this expansive master plan further cements Niseko as a destination for the well-heeled.



**Eco Glades**  
Selangor, Malaysia **Dwelling**

Eight precincts of modern eco living, with substantial open spaces, landscaping and waterscaping. The concept was derived from merging greenery with Cyberjaya's Lake Gardens, inspiring the apt name "Eco Glades".

Vision & Strategies

Land Use Planning

Connectivity

Urban Infrastructure

Environmental Sustainability

Landscape



www.ong-ong.com



**Ngwe Saung Beach Resorts**  
Myanmar **Hospitality**

This development addresses the growing demand for holiday destinations in Myanmar with a master plan comprising elegant vacation homes and exclusive amenities.



**Bataan**  
Philippines **Commerce**

The master plan for the Bataan Provincial Capitol is undergoing major strides towards urbanism, with an integrated approach to a smart city and applying resilient design.



**Kediri**  
Indonesia **Commerce**

This plan to relocate a township of 100 ha will enable the creation of a self-sustaining boulevard with housing, schools, business and civic centres.



360 Solution Specialist

# Architecture

ONG&ONG's wealth of experience in architecture forms the backbone of every project we undertake, regardless of scale or typology. Our specialist knowledge in the discipline has seen the firm deliver countless projects of outstanding calibre. Building works of art calls for researching the needs of users and their cultures, paired with the dedicated hands of our architects to deliver an Experience Beyond.



**Vittoria Cotton Tyre Factory**  
Samut Prakan, Thailand **Commerce**

Rendered in a sophisticated ecru tone, the factory sports a coated steel facade with subtle diagonal slats that visually underscore the brand's innovative approach in developing unique products. Darker grey tones and angular elements anchor the interior spaces.



**MK-Residence**  
Nagano, Japan **Dwelling**

This 7,534 sqft single-storey home in Nagano blends modern and traditional design, embracing the sloping terrain and water views. Thoughtfully zoned for privacy and hospitality, it features timber and steel construction, natural material finishes, and immersive indoor-outdoor living.



**The Atelier**  
Singapore **Domicile**

A 22-storey freehold development featuring 120 luxury apartments, full amenities, and a De-Stijl-inspired facade. Earthy tones reflect the site's former use as a spice plantation, while thoughtful design and touch-free technology promote comfort, wellness, and riverside living.



**St Joseph's Church**  
Singapore **Civic**

This church that's been gazetted as a National Monument of Singapore required A&A works to conserve the important features and artifacts. The church's many unique features were beautifully restored, giving it a fresh appearance in line with contemporary requirements.



**Thiso Mall Truong Chinh - Phan Huy Ich**  
Ho Chi Minh City, Vietnam **Commerce**

This modern retail hub features open-plan interiors, lofty ceilings, and flexible units. Thoughtful circulation and spacious common areas support vibrant, dynamic shopping experiences in a contemporary urban setting.



**Renaissance Bali Nusa Dua Resort**  
Bali, Indonesia **Lifestyle**

With no access to a beach front, this resort leverages on the beauty of the lush foliage and the Bali National Golf Club in its vicinity with Mount Agung looming in the distance to enthrall guests.

Master Planning

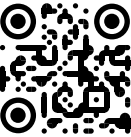
Architecture

Ideate and Create

Conceptualisation & Analysis

Research & Development

Space Planning



www.ong-ong.com



**Duta Park Residences**  
Kuala Lumpur, Malaysia **Domicile**

Featuring sleek, vertically accented towers with glass, steel, and concrete facades that enhance their height. Recessed balconies and podium levels with landscaped decks add dynamism, while rooftop sky decks crown the architecture with elegant functionality.



**Artyzen Singapore**  
Singapore **Lifestyle**

Inspired by the local Peranakan culture, Artyzen offers a unique take on a contemporary sky villa typology, defined by and imbued with the heritage and history of its site. Through its architecture, a hotel experience which is deeply ingrained in tropical elements was created.



SGH Emergency / NNI Building  
Singapore  
A Project Innovations Project

Experience Beyond  
Purposeful

# MANAGEMENT

Our experienced, systematic, and communicative specialists realise the best end-to-end solutions for every project.



Combining forward-thinking strategies with clear milestones, ensures innovation drives progress.  
Paul Roger, CEO



Project Management  
Project Development  
Construction Management  
Cost Management  
Place Management



Construction  
Design & Build  
Turn Key Solutions  
Contract Works



# Directors & Leaders

The world is rapidly changing. Shifting paradigms means companies must reinvent themselves in more innovative ways to thrive. We need visionary leaders for the long-term. As such, we look to the collective expertise of both veterans and fresh talents to steer us into the future.

## Innovation Experience Leadership



01



02



03



04



05



06



07



08



09



10

### Architecture

- 01 Steven Low
- 02 Wendy Tan
- 03 Josephine Loo
- 04 Loh Kah Wai
- 05 Kurjanto Slamet
- 06 David Ching
- 07 Joe Fu Zhuo
- 08 Wang Lai Meng
- 09 Andhi Priatmoko
- 10 Ong Tze Boon



01



02



03



04



05



06



07



08



09



10



11



12



13



14



15



16



17

### Architecture

- 01 Ong Hwee Jin
- 02 Ashvinkumar Kantilal
- 03 Siti Jamaliah
- 04 Ahmad Syazli
- 05 Hasbullah
- 06 Tan Kee Keat
- 07 Louis Tan
- 08 Jim Phan Thanh Tuan
- 09 Lim Kok Hui
- 10 Virakun Punyaratabandhu
- 11 Hoang Huu Dung
- 12 Ong Qi Rong
- 13 Elita Ong

### Interior Design

From left

- 14 Wafi Afandi
- Elli Wang
- Kee Choon Yen

- 15 Bui Thi Bang Tam

From left

- 16 Teo Boon Kiat
- Chester Goh

### Landscape

- 17 Lena Quek





01



07



13



02



08



14



03



09



15



04



10



16



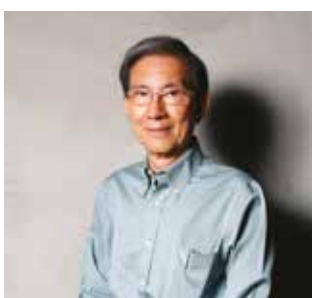
05



11



17



06



12



18

Engineering  
01 Khine Zar Zar

From left  
02 Tan Peck Khoon  
Teh Yong Hui

03 Richard Teo  
04 David Chan

From left  
05 Henry Irwan Gunawan  
Goh Teck Sin

06 Lim Yan Ping  
07 Shahrom Bin Mohamed Ariff  
08 Ryan Huynh Ngoc Nghia  
09 Dang Hoang Tung  
10 Simon Loh

Brand Engagement  
11 Stanley Tan

Lighting  
12 Jerome Tan

Project Management  
From left  
13 Paul Roger Lim  
Lee Chek Shih

14 Thomas Yee  
15 Hardy Turangan

Design Technology  
16 Daniels Chandra

Information Technology  
17 Dan Goh

Admin & Human Resource  
18 Crystal A. M.

# LAND SCAP ING

Enabling dynamic  
and mutually  
beneficial  
interplays  
between nature  
and the built  
environment.



Masterplanning  
Space Planning  
Blue & Green Solutions  
Sustainability  
Playground Design



Pushing the limits  
of sustainability by  
designing regenerative  
landscapes.  
Lena Quek, Director



MSD-House  
Singapore  
An ONG&ONG Project

# ENGINEERING

Innovative and sustainable solutions for every challenge, ensuring client satisfaction.



Mechanical  
Electrical  
Civil  
Structural  
Fire Safety  
Environmental



Experience Beyond  
Evocative



Our inspiration comes from the challenge of turning complex problems into elegant, sustainable solutions.  
Goh Teck Sin, CEO

[rankine-hill.com](http://rankine-hill.com)



# OUR ORGANISATION



## 360 SOLUTION

ONG&ONG embraces each project's process as a singular integrated solution. We aim to form a tripartite framework consisting of design, project management and engineering solutions, to provide opportunities for cross-disciplinary interaction as well as to create coherent and sustainable designs.

### Design

Masterplanning  
Brand Engagement  
Architecture  
Experience Design  
Interior  
Landscape  
Lighting

### Engineering

Mechanical  
Electrical  
Civil  
Structural  
Environmental  
Fire Safety

### Management

Project  
Development  
Construction  
Cost  
Place

# CONTACT



**ONG&ONG Group Pte Ltd**  
510 Thomson Road,  
#11-00 SLF Building,  
Singapore 298135  
t +65 6258 8666  
f +65 6259 8648  
group.ong-ong.com



**ONG&ONG Pte Ltd**  
510 Thomson Road,  
#11-03 SLF Building,  
Singapore 298135  
t +65 6258 8666  
f +65 6259 8648

**PT ONG and ONG**  
Grha Niaga Thamrin 1st Floor Unit A1  
Jl. K.H. Mas Mansyur  
Kebon Melati, Tanah Abang  
Jakarta Pusat 10230, Indonesia  
t +62 21 2139 2269

**ONG&ONG 360 Consultancy Sdn Bhd**  
Unit 1A-07, Blok 1A, Plaza Sentral,  
Jalan Stesen Sentral 5,  
50470 Kuala Lumpur, Malaysia  
t +60 3 2272 2360  
f +60 3 2272 3360

Unit 02-13 Blok H,  
Komersial Southkey Mozek,  
Persiaran Southkey 1,  
Kota Southkey, 80150 Johor Bahru,  
Johor Darul Takzim Malaysia

**ONG&ONG Design LLC**  
Residence 60, Unit 13-07, 4th Khoroo,  
15th Khoroolol Peace Auv 8B,  
Ulaanbaatar 13345, Mongolia  
t +976 7575 6515  
f +976 7575 6525

**ONG&ONG Limited**  
No. 3L, 3rd Floor, Kabaraye Condominium,  
Kabaraye Pagoda Road, 9 Ward, Mayangone  
Township, Yangon, Myanmar

**ONG&ONG Design Co Ltd**  
75 / 50 Level 15, Richmond Office Building,  
Soi Sukhumvit 26, Klongtan, Klongtoey,  
Bangkok 10110, Thailand  
t +66(0) 2 258 5915

**ONG&ONG Co., Ltd**  
Unit 1003B, Level 10 Centre Point Building,  
106 Nguyen Van Troi Street, Ward 8, Phu  
Nhuan District, Ho Chi Minh City, Vietnam  
t +84 28 6285 6178 / +84 28 6285 6179  
f +84 28 6285 6169  
www.ong-ong.com

**ONG&ONG Co., Ltd - Hanoi**  
Room 913, 9th Floor, Commercial,  
No. 174 Thai Ha, Trung Liet Ward,  
Dong Da District, Hanoi City, Vietnam  
t +84 24 7300 5800  
www.ong-ong.com



**SCA Design Pte Ltd**  
510 Thomson Road,  
#11-03 SLF Building,  
Singapore 298135  
t +65 6253 4886  
f +65 6259 8648  
www.sca-design.com



**Rankine&Hill (Singapore) Pte Ltd**  
510 Thomson Road,  
#11-03 SLF Building,  
Singapore 298135  
t +65 6258 8666  
f +65 6259 8648  
www.rankine-hill.com

**Rankine&Hill (Vietnam) Co., Ltd**  
Unit 1003B, Level 10, Centre Point Building 106,  
Nguyen Van Troi Street, Ward 8, Phu Nhuan  
District, Ho Chi Minh City, Vietnam  
t +84 28 6285 6178 / +84 28 6285 6179  
f +84 28 6285 6169

**Rankine&Hill (Malaysia) Sdn Bhd**  
Unit 1A-07, Blok 1A, Plaza Sentral,  
Jalan Stesen Sentral 5,  
50470 Kuala Lumpur, Malaysia  
t +60 3 2272 2360  
f +60 3 2272 3360

**Rankine&Hill (Myanmar) Limited**  
No. 3L, 3rd Floor,  
Kabaraye Condominium,  
Kabaraye Pagoda Road,  
9 Ward, Mayangone Township,  
Yangon, Myanmar  
www.rankine-hill.com



**Project Innovations Pte Ltd**  
510 Thomson Road,  
#11-03 SLF Building,  
Singapore 298135  
t +65 6255 3966  
f +65 6259 8648  
www.proj-innovations.com



**Project X:ion Pte Ltd**  
510 Thomson Road,  
#11-03 SLF Building,  
Singapore 298135  
t +65 6255 3966  
f +65 6259 8648  
www.proj-xion.com



**IMMORTAL The Design Station Pte Ltd**  
510 Thomson Road,  
#11-03 SLF Building,  
Singapore 298135  
t +65 6227 9406  
f +65 6259 8648  
www.immortal.com.sg

### ONG&ONG

**f** ONGONG360

**@** @ONGONG\_360

**in** ONG&ONG

### SCA

**f** SCADESIGN360

**@** @SCADESIGN360

**in** SCA DESIGN PTE LTD

### IMMORTAL

**f** IMMORTAL SINGAPORE

**@** @IMMORTAL\_SINGAPORE

**in** IMMORTAL

### RANKINE&HILL

**in** RANKINE&HILL



ONG&ONG

THIS IS  
MYANMAR.

ONG&ONG Limited

No. 3L, 3rd Floor, Kabaraye Condominium,  
Kabaraye Pagoda Road, 9 Ward, Mayangone Township, Yangon,  
Myanmar

group.ong-ong.com

# BRA NDI NG

Articulating  
brand appeal and  
positioning, we  
craft blueprints  
that give life to  
visual identities  
and user  
experiences.

IMMORTAL  
Brand Engagement

Market Insight  
Brand Audit  
Brand Strategy  
Brand Expression  
Brand Management  
Environmental Branding



Your brand is not just  
your logo. It's the  
appeal, the story, and  
the experience.

Stanley Tan, Director

immortal.com.sg



## OUR WINNING STREAK 2024



**Artyzen Singapore**  
Architecture, Interior Design  
Management, Landscape  
SIA Architectural Design Awards,  
Hotel Category, Merit



**Artyzen Singapore**  
Architecture, Interior Design  
Management, Landscape  
Singapore Good Design  
Award, Architecture



**Artyzen Singapore**  
Architecture, Interior Design  
Management, Landscape  
Japan Good Design  
Award, Architecture



**Hitachi Vantara**  
Office Interior  
Asia Pacific Property Awards,  
Office Interior, Singapore



**Changi Airport Terminal 3  
Central, Lotte Duty Free**  
Project Management  
Asia Pacific Property Awards,  
Commercial Redevelopment/  
Renovation, Singapore



**Holiday Inn Express & Suites  
Singapore Novena**  
Architecture, Interior Design  
Asia Pacific Property Awards,  
Hotel Interior, Singapore



**Artyzen Singapore**  
Architecture, Interior Design  
Management, Landscape  
Credaward, Comprehensive  
Commercial, City Hotel, Gold



**ONG&ONG Singapore**  
Credaward, Quality Design Brand



**ONG&ONG Singapore**  
BCI Top 10 Architects, Singapore



**ONG&ONG Vietnam**  
BCI Top 10 Architects, Vietnam



**Yusuf Ishak Secondary School**  
M&E Engineering  
ACES Design Excellence  
Awards, Mechanical and  
Electrical, Merit Award



**12 Mount Sophia (Haus on Handy)**  
URA Architectural Heritage  
Awards. Special Mention



**St Joseph's Church**  
URA Architectural Heritage  
Awards. Award of Conservation



**Sycamore**  
Vmark Design Award 2024,  
Best Residential Design, Silver



**Artyzen Singapore**  
Architecture, Interior Design  
Management, Landscape  
Su Award, Urban Regeneration  
Category, Top 10 Winner



**Artyzen Singapore**  
Architecture, Interior Design  
Management, Landscape  
World Architecture Festival, Hotel  
& Leisure, Highly Commended

## OUR WINNING STREAK 2023



**The Jovell**  
Architecture, Landscape  
FIABCI Singapore Property  
Awards 2023, Residential  
Mid-Rise, Winner



**Setia Marina 2**  
Masterplanning  
FIABCI World Prix d'Excellence  
Awards, Residential (Low-Rise)  
Category, Gold

FIABCI Malaysia Property Award  
(MPA), Residential (Low-Rise)  
Category Winner



**Oakwood Suites, Chongli**  
Interior Design  
Asia Pacific Property Awards,  
Construction & Design, China, Best  
New Hotel

Asia Pacific Property Awards, New  
Hotel Construction & Design, Asia  
Pacific, Nominee



**Artyzen Singapore**  
Architecture, Interior Design  
Management, Landscape  
Asia Pacific Property Awards 2023,  
5-Star Award, Best Hotel  
Architecture

Asia Pacific Property Awards 2023,  
Best Hotel Architecture, Asia  
Pacific, Nominee



**Jadescape**  
Architecture, Interior Design,  
M&E Engineering  
BCA Universal Design Index, Very  
Good Universal Design Provisions



**Jurong West Street 52  
Nursing Home**  
Architecture, M&E Engineering,  
C&S Engineering  
MOH Holdings Innovation &  
Technology Excellence  
Awards, Gold



**CT FoodNEX**  
Architecture  
PropertyGuru Asia Property  
Awards Singapore, Best Industrial  
Development, Winner



**Social Media Office Expansion**  
Office Interior  
Good Design Awards 2023,  
Environment



**Jadescape**  
Architecture, Interior Design,  
M&E Engineering  
Good Design Awards 2023,  
Environment



**Sloane Residences**  
Architecture, Landscape  
Good Design Awards 2023,  
Environment



**ONG&ONG**  
BCI Asia Awards, Top 10  
Architects, Singapore



**Dementia-Friendly  
Wayfinding Project**  
Brand Engagement  
Nippon Paint Creative Colours  
Awards, Public Spaces



**North Hong Kong Columbarium**  
Architecture  
World Architecture Festival, Future  
Civic Projects Category, Finalist



**ONG&ONG**  
group



**ONG&ONG**  
group



# OUR WINNING STREAK 2022



**Pathlight School**  
Architecture,  
BCA Green Mark Platinum,  
Zero Energy



**Nee Soon South Community Club**  
Architecture, Brand Engagement  
BCA Green Mark, New Non-Residential Buildings, Platinum



**Rail Depot off Tengah Way**  
Architecture, Brand Engagement  
BCA Green Mark, New Non-Residential Buildings, Platinum



**Bus Depot off Tengah Way**  
Architecture, Brand Engagement  
BCA Green Mark, New Non-Residential Buildings, Platinum



**Dementia Friendly Wayfinding System**  
Brand Engagement  
Singapore Good Design,  
Experience Design, Special Mention



**Tcube**  
Brand Engagement, Workplace Interior  
Singapore Good Design,  
Interior Design



**Satoria Tower**  
Architecture  
Asia Pacific Property Awards,  
Commercial Architecture, Indonesia



**Setia Marina 2**  
Masterplanning  
FIABCI World Prix d'Excellence  
Awards, Residential (Low-Rise)  
Category, Gold



**Setia Marina 2**  
Masterplanning  
FIABCI Malaysia Property Award  
(MPA), Residential (Low-Rise)  
Category Winner



**ONG&ONG Group**  
Autodesk ASEAN Innovation  
Awards 2022, Cloud Advocate  
of The Year



**ONG&ONG Group**  
TechBlazers Awards,  
Best Adoption – SME Category



**Celesta Heights**  
Interior Design  
PropertyGuru Vietnam  
Property Awards, Best Condo  
Architectural Design



**Orchard Sophia**  
Architecture  
PropertyGuru Singapore Property  
Awards, Best Boutique Condo  
Development



**Artyzen Singapore**  
Architecture, Landscape  
PropertyGuru Singapore  
Property Awards, Best Hotel  
Architectural Design

PropertyGuru Singapore  
Property Awards, Best Hotel  
Interior Design



**FoodFab @ Mandai**  
Architecture, Brand Engagement  
PropertyGuru Singapore  
Property Awards, Best  
Industrial Development



**Satoria Tower**  
Architecture  
International Architecture  
Awards, Honorable Mention

# OUR WINNING STREAK 2021



**37FC-House**  
Architecture  
Asia Pacific Property Awards,  
Architecture Single Residence  
Singapore, Award winner



**Oakwood Residence Hanoi**  
Interior Design  
Asia Pacific Property Awards, Hotel  
Interior Vietnam, Award winner



**The Holiday Halong**  
Architecture  
Asia Pacific Property Awards,  
Hotel Architecture Vietnam,  
Award winner



**Renaissance Bali Nusa Dua Resort**  
Architecture  
Asia Pacific Property Awards, Hotel  
Architecture Indonesia, 5-Star  
Award winner



**ONG&ONG Group**  
BCA IDD Awards, Firm  
Category, Platinum



**North-South Corridor (Tunnel)  
Between Ang Mo Kio Ave 3 and  
Ang Mo Kio Ave 9**  
Architecture  
BCA IDD Awards, Project  
Category, GoldPlus



**Jadescape**  
Architecture, Interior design,  
M&E Engineering  
BCA Universal Design Mark  
Award, Gold Plus



**Toa Payoh Ridge**  
Architecture, Landscape, C&S  
Engineering, M&E Engineering  
BCA Green Mark Award, GoldPlus



**Telok Blangah Community Club**  
Architecture  
BCA Green Mark Gold



**The Jovell**  
Architecture  
BCA Green Mark Award, Gold



**Nexus International School**  
Architecture  
BCA Construction Excellence  
Award, Excellence



**Lake Grande**  
M&E Engineering  
BCA Construction Excellence  
Award, Excellence



**Tekka Place**  
Architecture  
BCA Construction Excellence  
Award, Merit



**Dementia-friendly Wayfinding System**  
Brand Engagement  
Global WAN Awards,  
Colours in Architecture, Gold



**ONG&ONG Pte Ltd**  
BCI Top 10 Architects Singapore  
**ONG&ONG Pte Ltd**  
BCI Top 10 Architects Vietnam



**Dementia-friendly Wayfinding System**  
Brand Engagement  
Chicago Athenaeum  
Good Design Awards,  
Graphic Design



**Dremien Collection**  
Architecture  
Chicago Athenaeum  
Good Design Awards,  
Environment



**Sloane Residences**  
Architecture  
Autodesk ASEAN Innovation  
Awards 2021, Alliance award



**LakeFront Residence Phase 3**  
Architecture  
Autodesk ASEAN Innovation  
Awards 2021, Innovator of the  
Year Award



**Acacia Heights**  
Architecture  
iProperty Development  
Excellence Awards 2021,  
Best Value Landed Development



**37FC-House**  
Architecture  
International Architecture  
Awards, winner



**ONG&ONG**  
group



**ONG&ONG**  
group



# What is your Brand Appeal?

A strong brand strategy communicates your unique selling point.



Your brand story engages the target audience and is augmented with market landscape insights. It defines the brand's appeal and positioning, giving a basis for the design of the brand visual identity. This covers logos, colour schemes, typography, and other visual elements that form the manual of the brand's visual expression. When put together, they form a brand blueprint from which brand owners and agencies can craft user experiences and adapt to grow the brand.



"I assembled the Roundtable comprising a collaborative network of experts from across the globe, garnered from over 30 years of experience working in Europe and across Asia. Their insights enable us to blend the art of design with the science of communication, ensuring that every project is tailored to drive impactful engagement and long-term success in a competitive marketplace."

Stanley Tan, Director

## The Roundtable

IMMORTAL's group of thought leaders, each one a specialist in their respective fields, spans a wide array of industries. By harnessing the collective knowledge and diverse perspectives of these global professionals, we offer our clients unparalleled insights that go beyond conventional thinking.







EXPERIENCE  
BEYOND.

WE UNDERSTAND ASIA

SINGAPORE INDONESIA MALAYSIA MONGOLIA MYANMAR THAILAND VIETNAM

[group.ong-ong.com](http://group.ong-ong.com)