

360 NEWS



创新

Reinvention

Rethinking Our World
Sustainability Through Technology
Health for the Aged/Elderly
Forward-Thinking Specialists



การรังสรรค์ใหม่

Sự tái tạo

AR



ဆန်းသစ်တီထွင်ခြင်း

Menciptakan Kembali

дахин зохион бүтээх

REINVENTING
A FUTURE BEYOND
THE NORM

EXPERIENCE
BEYOND

Enthusiastic Achievers

New Wave of Leadership Talents

New appointments and the promotion of several familiar faces are very much welcomed as we anticipate continued growth within ONG&ONG. We look towards these thought leaders to guide the group as we strive for greater accomplishments to better serve communities around the region.



Wang Lai Meng
Director, Architecture
Studio 9
ONG&ONG
Singapore



Akira Kita
Director, Architecture
Studio 7B
ONG&ONG
Singapore



Josephine Loo
Director, Architecture
Studio 9
ONG&ONG
Singapore



Joe Fu Zhou
Director, Interior Design
SCA Design
Singapore



Yenny Tjong
Financial Controller
ONG&ONG Group
Singapore



Kurjanto Slamet featured on The CEO Magazine

The CEO of ONG&ONG's Indonesian office, Mr Kurjanto Slamet, was featured on The CEO Magazine last August. In an insightful interview, Mr Kurjanto reinforced our concept of leveraging on 'Glocal' teams, and also what it takes to offer "world-class excellence" in today's built environment industry.



Read more here

APPA Award Plaques presented to ONG&ONG Directors



Following the announcement that ONG&ONG had garnered four awards at the 2020-2021 International Property Awards (Asia Pacific), for Oakwood Residence, Renaissance Bali Nusa Dua Resort, The Holiday Halong and 37FC-House, our directors were recently presented with the physical plaque for their accomplishments.

Mr Kurjanto Slamet, CEO of our Indonesia office and Mr Teo Boon Kiat, Director of the Singapore Interior Design Studio (ID4) were presented the awards personally by Mr Satoshi Konagai, Leader of LWT Asia Pacific.



Read more here



Ong Tze Boon invited to speak at The International Built Environment Week

ONG&ONG's Group Executive Chairman, Mr Ong Tze Boon, was invited to speak at a leadership plenary during The International Built Environment Week (IBEW). Mr Ong, along with other leaders of the industry, offered insights on how to build a robust industry value chain. Drawing from recent experience, he also

shared opinions on how to create and preserve business value in the face of adversity. His main topic of discussion however, was to further elaborate how digital technology or digitalisation can be used to create a hybrid space, blurring the lines between the virtual and the physical.



Robert Brodeth featured on Singapore Business Review

Robert Brodeth, the Associate Director of Architecture at ONG&ONG, has recently been featured on the Singapore Business Review (SBR) in a listing of young architects to watch out for in Singapore. SBR counts the seven-storey civic building, Heartbeat@Bedok in Singapore, and the redevelopment master plan of the Bataan Capitol in the Philippines amongst Brodeth's most notable projects to date.

In the recent months, he has also spoken at Hauraton's Sustainability in Sports forum, a design forum for students at the National University Philippines, and a webinar organised by HDB Building & Research Institute and the Singapore Green Building Council on Green, Smart and Sustainable Living.



Read more here



ONG&ONG Group sets sights on merging digital and physical worlds

This year's ONG&ONG Group corporate retreat saw Executive Chairman, Ong Tze Boon, turn the focus inward, empowering every employee to own the vision that will propel the organisation into the future. With the COVID-19 pandemic acting as an accelerator for the adoption of digitalisation and technology, future trends will see the real world become an extension of the virtual world and not vice versa.

We have embraced cloud computing solutions and incorporated BIM and IDD into our workflows. This is an opportune time to look ahead and combine physical and digital realms, to reinvent how spaces can function.

Awards



Through our philosophy of melding global expertise with local contexts (Glocal), we have always assembled the best amalgamation of teams from across the region, collaborating uninterrupted despite the pandemic. The awards and accolades we have collected in 2021 are a testament to what we have managed to get right, spurring us on as we continue to serve communities through better design.

hallmarks of excellence



37FC-House
International Architecture Awards, Winner



ONG&ONG Pte Ltd
BCI Top 10 Architects Singapore

ONG&ONG Co., Ltd
BCI Top 10 Architects Vietnam



ONG&ONG Group
BCA IDD Awards, Firm Category, Platinum



North-South Corridor (Tunnel) Between Ang Mo Kio Ave 3 and Ang Mo Kio Ave 9
BCA IDD Awards, Project Category, GoldPlus

Principal Leads and Team Members:
Steven Low, Siti Jamaliah Banafie Jaarfar, Gomathy Archana, Cheng Rui Chween, Andrew Candila Carino and Sarah Binte Afandi Abdullah Ang *Architecture*



Telok Blangah Community Club
BCA Green Mark Gold

Principal Leads and Team Members:
Wendy Tan, Josephine Loo and Azman Embong *Architecture*
Goh Teck Sin, Lim Yan Ping, Simon Loh *C&S Engineering*
Shahrom Bin Mohamed Ariff, Teh Yong Hui, Jackson Lee and Wan Choon Kit *M&E Engineering*



Jadescape
BCA Universal Design Mark Award, Gold

Principal Leads and Team Members:
Ashvinkumar Kantilal, Andrew Lee, Lai Tien Yong, Frederick Santiago, Natapon Akomsoontorn and Ryan Manaloto *Architecture*
Teo Boon Kiat, Samantha Ho and Yu Aitong *Interior Design*
Tan Peck Khoo, Shahrom Mohamed Ariff and Teh Yong Hui *M&E Engineering*



The Jovell
BCA Green Mark Award, Gold

Principal Leads and Team Members:
Steven Low, Ashvinkumar Kantilal, Ong Hwee Jin, Cinco Gregory, Belinda Wong and Yadana Kay Khine *Architecture*



Toa Payoh Ridge
BCA Green Mark Award, GoldPlus

Principal Leads and Team Members:
Steven Low, Ong Hwee Jin, Sophia Foo, Bambang Azhar Irawan Bin Hardikusuma and Cinco Gregory *Architecture*
Lena Quek and John Poe *Landscape*
Goh Teck Sin, Henry Irsan Gunawan and Derek Low Aik Liang *C&S Engineering*
Shahrom Mohamed Ariff, Teh Yong Hui, Mohd Amil Siddiq Mohd Tarmizi and Tan Jun Wei *M&E Engineering*



Sloane Residences
Autodesk ASEAN Innovation Awards 2021, Alliance Award

Principal Leads and Team Members:
Ashvinkumar Kantilal, Andrew Lee, Lai Tien Yong, Natapon Akomsoontorn, Santiago Frederick and Richard Yew *Architecture*
Lena Quek and Jason Ho *Landscape*



LakeFront Residence Phase 3
Autodesk ASEAN Innovation Awards 2021, Innovator of the Year Award

Principal Leads and Team Members:
Ng Cho You, Suherman Sadelan, Benjamin Cheng, Khor Yen Min, Mohd Hafizan Anuar and Fareez Ahmad Daman Nuri *Architecture*



Dementia Wayfinding Project
WAN Awards, Colours in Architecture, Gold

Principal Leads and Team Members:
Stanley Tan, Gary Soh, Jacqueline Ong and Ryan Lim *Environmental Wayfinding*



Acacia Heights
iProperty Development Excellence Awards, Best Value Landed Development

Principal Leads and Team Members:
Ng Cho You, Suherman Sadelan, Muhammad Helmi Noor Rahmat, Khor Yen Min, Benjamin Cheng Jia Yew, Mohd Hafizan Fareez, Ahmad Daman Hurj and Dzulhilmie Irwan Haji Ibrahim *Architecture*



37FC-House
Asia Pacific Property Awards, Architecture Single Residence Singapore, Award Winner



Oakwood Residence Hanoi
Asia Pacific Property Awards, Hotel Interior Vietnam, Award Winner

Principal Leads and Team Members:
Raymond Thai Don Thanh (1980-2020), Teo Boon Kiat, Amy Ling Tien Keen and Le Huyen Anh *Interior Design*



The Holiday Halong
Asia Pacific Property Awards, Hotel Architecture Vietnam, Award Winner

Principal Lead and Team Member:
Ong Qi Rong, Hoang Huu Dung *Architecture*



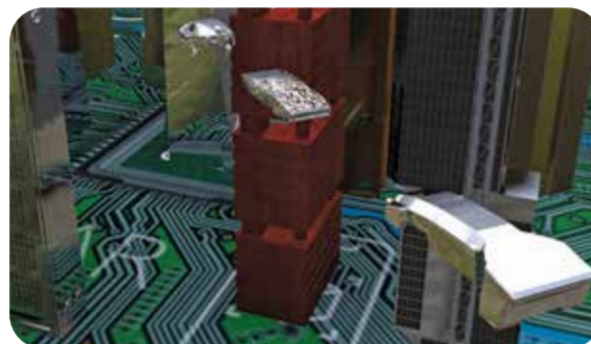
Renaissance Bali Nusa Dua Resort
Asia Pacific Property Awards, Hotel Architecture Indonesia, 5-Star Award Winner

Principal Leads:
Kurjanto Slamet, Loh Kah Wai *Architecture*

AR

AUGMENTED

REALITY



We've Got It Covered

The ONG&ONG Group advocates for the adoption of technology and digitalisation in the built industry. Our numerous accolades for IDD adoption and extensive work with BeyondX serves as a clear indicator of where we stand.

The cover of this 360 News issue, designed by IMMORTAL, demonstrates the power of technology to create an Experience Beyond. **Use the QR scanner on your mobile phone or tablet on the cover**, and be transported into the city of the future via **Augmented Reality**.



Since the start of the pandemic in 2020, BeyondX has had to pivot from its usual format as a physical event into one that was hosted solely within a digital space. However, far from dampening the effect of this annual event championing technology in the built environment, its evolution into a webinar instead served as a great example of how technology and digitalisation have become ever more crucial solution providers. Over the two days, eight sessions were conducted discussing a variety of topics on technology in the built environment.

Here are the key takeaways:

Virtual Worlds Expand Possibilities

The overlapping of the virtual and physical worlds has opened a new realm of possibilities. Digital technology has evolved a place where computer-generated images (CGI), like those created with Unreal Engine, can closely rival what we see in the real world. In this way, designers can now convey their intention with utmost visual realism. Paired with augmented reality technology, companies like Hiverlab now offer fresh and interactive ways of presenting ideas and storytelling.

Companies like Adobe offer a huge suite of software and digital assets that makes creating these virtual worlds a much less daunting process. And with digital twin programmes, a building can be modelled down to the tiniest details, not only allowing designers to quickly test ideas and concepts but also offering greater detail to their clients.

The Artificial Intelligence Toolkit

With artificial intelligence (AI) and machine learning, companies like Digital Blue Foam argue that this is the next evolution for designers' tools. More than a simple change from physical to digital tools (e.g. pen and paper to CAD software), tools now have the ability to actively provide input. The ability to simulate nature, like the arc of the sun's path at a given coordinate on Earth will, for example, allow designers to choose the best orientation for solar panels.

Companies like Johnson Controls and Panacoustics collect and synthesise vast amounts of data that is then distilled into formats human beings can understand. This collected information gives designers the insight needed to make the best choices and choose the most efficient processes for the buildings they create.

This is just one narrative gleaned from BeyondX 2021. To catch the full sessions, head over to our YouTube Channel at bit.ly/BeyondXYT

BEYOND X

Where Technology Informs Reality

From July 28 to 29, BeyondX 2021 took place once again as a webinar, bringing together inspiring speakers and those seeking inspiration.



Awards

REINVENTING THE WHEEL

With the emergence of a 'New Normal', it is time re-think, re-imagine, and re-explore the ways to build a better future.

It has been more than a year since the COVID-19 pandemic started causing massive disruptions around the globe. And while the service, F&B and hospitality industries appear to have taken the biggest hits, professional industries like the AEC sector are also in tumult. Not only did lockdowns cause construction processes to grind to a halt, the labour force was also affected by the spread of the virus.

The silver lining, however, came with the acceleration of the adoption of digital technology and digitalisation for the built environment. And now, with the realisation that there will be a 'New Normal' around the world, many architecture and design firms will have to pivot their course and evolve accordingly. It is time for a reinvention of the way we design for communities, the way we imagine cities, and ultimately, the way we live.

TECHNOLOGY

DRIVER OF CHANGE

Although the COVID-19 pandemic caused major disruptions across the globe, one positive outcome was that it helped to accelerate the adoption of technology. A recent study by McKinsey concluded that "about 20 to 25 per cent of the workforces in advanced economies could work from home between three and five days a week" without any loss in productivity. This is mainly due to the adoption of cloud computing technologies for collaboration. For the AEC industry, this includes Integrated Digital Delivery (IDD) and Building Information Modeling (BIM), two systems that ONG&ONG has successfully integrated into its workflow.

Through the pandemic, society has been increasingly open to the acceptance of incorporating digital technologies into their lives. E-commerce has grown two to five times faster than before COVID-19, and the emergence of numerous food delivery applications indicate a change in consumer behaviour. With this new-found acceptance, it is the perfect time to think about how combining digital technologies and physical space can transform and improve the experience of the end user.

Imagine walking into a building, and immediately through facial recognition software, the system can recognise, greet, and grant you all the necessary authorisations to reach your destination. You step into the lift and it automatically takes you to your floor, presets your preferred air conditioning temperature and prepares your favourite beverage. What if instead of looking for wayfinding signage, Augmented Reality or clever lighting can take you to your intended destination. This is what we mean when we say digital placemaking.

REINVENTION

IS CONSTANT

The concept of revitalising an area via urban redevelopment is something that has consistently proven to uplift the local economy while also increasing the quality of life for the surrounding community. They say the only constant is change, and as the needs and wants of the next generation of consumers constantly shift, it is only apt that cities and neighbourhoods evolve in keeping with these trends.

For example, just recently the Urban Redevelopment Authority (URA) of Singapore called for a reinvention of the Central Business District areas to turn it into a more attractive place to live. The goal was to rejuvenate these areas by encouraging building owners to convert older office spaces into mixed-used developments which include hotels, residences, retail and entertainment options. "Past definitions of a successful business and financial district are no longer relevant. The portrait of a successful CBD today is strikingly different from the mono-use office districts of yesteryear," affirms a spokesperson from the URA. A great example of this transformation is already underway at the Shenton Way area. Alibaba Group Holding recently bought a 50 per cent stake in the area's AXA Tower and will enter a joint-venture with Perennial Newco in its redevelopment.

The emergence of a 'New Normal' is the perfect opportunity for urban redevelopment projects. Around the world, we see a call for more emphasis on health and wellness creating a demand for pockets of green spaces and recreational amenities. Our experience with NTP+ (pages 8-9) further reinforced the value that developers are placing on open spaces, greenery, and shared communal areas. The Asian Development Bank reports a huge potential for urban renewal in Hanoi, Jakarta, and Manila.

RENEWED

CONNECTIVITY

Another factor that improves economies and the local quality of life is the growth of transportation infrastructure. It plays a fundamental role in shaping the physical, social, and economic landscape of cities. A United Nations report indicates that currently 55 per cent of the world's population live in urban areas and is estimated to reach 68 per cent by 2050. With such increases in population density, we will see mass transportation play an even more vital role in the years to come.

Additionally, according to Forbes, the Millennials and Gen Z demographics are not placing much importance on car ownership in their lives. Due to the increasing connectivity of mass transport systems in cities and the growing availability of ride hailing apps, they are able to get by without buying personal automobiles. This places more importance on a city's public transportation infrastructure.

As governments improve the transportation infrastructure within a city, communities benefit from new connections. For example, in Singapore, the Jurong Rail Line (JRL) extension (ONG&ONG are architects of multiple JRL stations) is set to transform the Jurong Area into the largest commercial hub outside the Central Business District, putting 60,000 households in Jurong within a 10-minute walk from a train station and connecting them to key activity nodes such as the Jurong Industrial Estate, Jurong Innovation District, and the Nanyang Technological University (NTU).

Conclusion

The message is simple. Times have changed, and architects and designers should seize the moment to reinvent themselves and the way they perceive the needs of their communities. It is evident that collaboration is the way forward, be it with technology partners, with specialist institutions or in direct consultation with the end-user, we all have to work together to create an #ExperienceBeyond.



New Tech Park

New Tech Park

A new retail concept adds value and refreshes a 1980s commercial development.
Singapore

Principal Leads and Team Members:

Ashvinkumar Kantilal, Andrew Lee, Lai Tien Yong, Sunita Dass, Raymond Bachtiar and Ryan Chee

Architecture

Teo Boon Kiat, Yu Ai Tong and Chan Wei Shan

Interior Design

Lena Quek and Mabel Lim

Landscape

Jerome Tan

Lighting

Goh Teck Sin and Grace Tang

C&S Engineering

Shahrom Mohamed Ariff, Teh Yong Hui and Thu Hein

M&E Engineering

Stanley Tan, Emeric Lau and Jacqueline Ong

Brand Engagement

Owned by Sabana REIT, New Tech Park is a 1980s light industrial development located at Lorong Chuan. Its recent transformation is a result of the A&A works by ONG&ONG with the goal of urban intervention and rejuvenation. Previously under the Business 1 (B1) category of land use, the addition of retail and F&B components and its proximity to the Lorong Chuan MRT Station, provides a new and exciting urban node for the largely residential neighbourhood.

As part of this evolution, a new bijou mall called NTP+ (read as "NTP Plus") was added to the development offering a combination of F&B, retail, and non-retail spaces. Out of the 26 retail and F&B units, 25 are located on the ground floor while the second floor offers a dedicated food court and landscaped deck. According to EdgeProp Singapore, as of April 2021, 97 per cent of the units within NTP+ has been leased.



The design of NTP+ takes its context from the verdant greenery surrounding its location and is inspired by the "Chuan" in Lorong Chuan which means water or springs. Thus, the landscape decks and lush foliage on the first and second floor was designed with a sense of fluidity, culminating in a dancing fountain water feature in the plaza area. These areas also act as additional recreational and breakout spaces within the mall providing the surrounding residents with a public plaza space, something that was lacking in the neighbourhood. The façade facing Lorong Chuan is enhanced by a roof trellis supported by distinctive slender vertical columns and a tiered landscape deck.

Most of the works were carried out under difficult circumstances caused by the ongoing pandemic. However, the pandemic also reinforces the need for open spaces, greenery, and shared communal areas, giving both tenants and patrons spots for respite and recreation - a highly-valued feature in a post-Covid world.

Additionally, the branding for NTP+ was handled by IMMORTAL. Both the name and logo were a result of the value enhancing strategy. A new logo, in orange, blue and green, captures a sense of variety and vibrancy, whereas the name New Tech Park was retained in a dark blue font for familiarity and the commercial tenants. Using the NTP+ acronym brings with it a contemporary feel while the plus visual icon reflects the value the mall adds to the surrounding community.





Mayflower MRT Station

Form meets function in a 3D hexagonal pattern at Mayflower Station.
Singapore

Principal Leads and Team Member:
Andrew Lee, Steven Low and Neil Rama Architecture

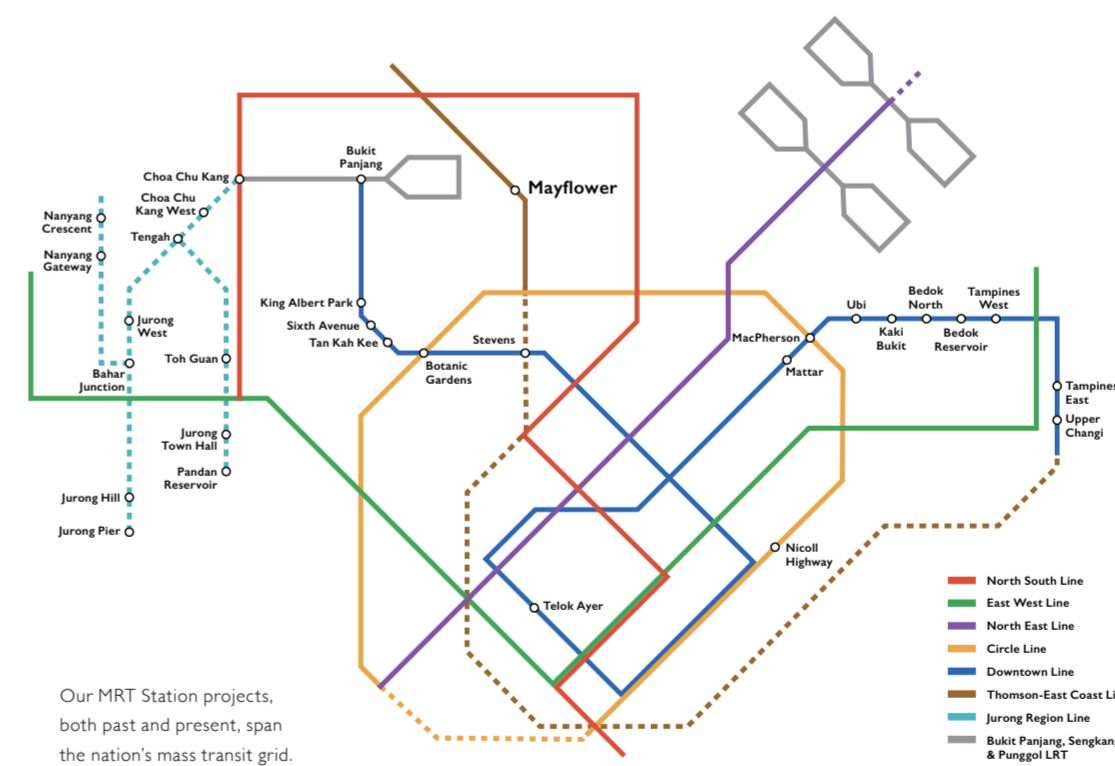


The new Mayflower Station (TE6) is part of the Thomson-East Coast Line Stage 2. Its seven entrances and interior were based on a hexagonal pattern, repeated to create interesting effects. By applying a basic hexagonal grid, the designers transformed this shape into a modular 3D block pattern for ease of construction.

At the entrances, the shape was multiplied to form a feature wall that is not only visually appealing but modulates visibility, natural lighting, ventilation, and heat. As the wall was also visually beautiful, glass panels were used on the road-facing side of the entrance so as not to hinder the view.

The roof panels, linkways and canopy of the seven entrances were crafted out of an aluminium composite, also bearing this hexagonal structure. Opaque and transparent panels could then be arranged within this frame to control the amount of natural lighting and ventilation. Additionally, this unique pattern also becomes a feature roof when viewed either from above or below.

The interior of the Mayflower MRT station was inspired by the bird-singing clubs of Singapore. The repetitive hexagonal patterns extend into the station and its three-dimensional structure give the station an incredible sense of visual depth. Additionally, small ornamental bird sculptures are scattered throughout the station as part of Singapore's Art in Transit (AIT) programme that integrates artworks by the country's leading artists into the MRT network.



Building Singapore's Infrastructure

Transportation infrastructure has always been a key determining factor in the growth of a community. From dirt paths to motorways and railroads, the ability to quickly and efficiently move the masses around a city can be directly linked to its economic growth. It is why our late founder pushed for developing the MRT system in Singapore and ONG&ONG still works on infrastructure projects today. From bus interchanges to MRT stations, we are proud to be a part of the nation's infrastructure growth.





Greenfield Residence

Water, greenery and luxury intertwine to create this perfect urban sanctuary.
Malaysia

Principal Lead and Team Member:
 Ng Cho You and Haniffi Harun *Architecture*



Terletak di Bandar Sunway, Greenfield Residence memperlihatkan interaksi antara elemen air, kehijauan dan gaya harmoni yang dapat mewujudkan ruang kediaman indah disamping mencerminkan bentuk dan fungsi sebenar. Pembangunan kediaman elegan ini terdiri daripada 3 menara iaitu 35, 35 dan 37 tingkat, lengkap dengan kedai pejabat yang mempunyai rekabentuk gaya hidup terkini serta 34 kemudahan rekreasi canggih terletak di tingkat podium.

Menara ini mempunyai 816 pangsapuri kediaman, dimana 18 kedai pejabat terletak di bawah podium tempat letak kereta. Pembangunan bercampur ini menawarkan pelbagai pilihan jenis reka bentuk dan susun atur bagi menarik minat pembeli dari pasaran yang berbeza.

Sebahagian besar pemandangan unit kediaman adalah menghadap laman lanskap utama dengan kolam renang indah yang luas serta laman yang hijau, sementara unit lain mempunyai pemandangan Bandar Sunway.

Reka bentuk bangunan menentangkan garis seni sederhana ditambah dengan warna-warna lembut bagi mewujudkan senibina yang elegan dan kontemporari. Ciri-ciri bangunan yang minitikberatkan kehijauan termasuk 'Sky Garden' dan 'Pocket Garden' di olah dengan teliti secara tidak langsung mengurangkan impak 'Urban Wall' yang sinonim dengan bangunan tinggi. Direka dengan pertimbangan secara menyeluruh, pembangunan ini juga diperakui di bawah 'Green Building Index (GBI)' bagi kejayaan reka bentuk hijau.

Located within the proximity of Bandar Sunway, Greenfield Residence boasts a harmonious interaction of water, greenery and style that seamlessly creates exquisite living spaces reflecting form and functionality. This elegant residential development comprises of 3 towers of 35 to 37 storeys complemented with lifestyle retail shops and 34 state-of-the-art recreational facilities nestled within an urban sanctuary on the podium level.

The towers host a total 816 residential apartments while the 18 retail shops are located directly below the car parking podium. The mixed development offers a wide selection of apartment types and layouts to appeal to the different market segments. Most of the residential units overlook a central landscaped park with expansive pools and forested greens, while the remaining units have views of the Bandar Sunway townscape.

The building's tower design employs clean architectural lines coupled with subtle colours to create a sleek and contemporary language. To soften the urban wall synonymous with high-rise buildings, green features including cascading sky gardens and pocket gardens are introduced at different levels. Designed with sustainability in mind, this development is also provisionally certified under the Green Building Index for green design excellence.





Cerrado

Cerrado Suites

A contemporary high-rise residence focused on recreation and wellness.
Malaysia

Principal Lead and Team Member:
Ng Cho You and Mohamed Tajmizi *Architecture*

Designed for young professionals and new families, Cerrado Suites combines an urban lifestyle, green living, and a healthy dose of outdoor wellness amenities. The two towers represent the first phase of this development within the 428-acre integrated township of Southville City. The towers have 35 and 36 floors respectively and a combined total of 808 units designed in 2- or 3-bedroom layouts. Additionally, there are a further five poolside villas.

One of the key features in the design of Cerrado Suites is its massive environmental deck on the podium level that spans a total of two acres. This shared space houses all the amenities including swimming and recreational pools and water features, the multipurpose hall, gym, and fitness stations for the young and old. These facilities are interspersed with organically shaped rest areas, built-in seating and activity pods to soften the edges between hardscape and softscape and also as congregational areas for residents.



When phase two is completed, this massive area will be complemented with another 4 acres of recreational space, easily accessible across both phases of the development. Yet another distinctive feature of the project is an internal concourse drop-off which offers added levels of security and privacy for all residents.

Most residential units will overlook the landscaped environmental deck while the others frame views of Southville City's lush greenery and townscape. Large windows in each unit increase natural lighting and allow for better airflow. This translates to clean architectural lines on the exterior façade and, coupled with subtle colours, creates a sleek and contemporary language for the buildings.

Direka bentuk untuk Professional muda dan keluarga baru, Cerrado Suites menggabungkan gaya hidup bandar, kehidupan hijau, dan kemudahan kesihatan luaran yang sihat. Kedua-dua Menara Cerrado Suites yang merangkumi 35 tingkat adalah merupakan fasa pertama pembangunan di kawasan perbandaran bersepadu Southville City seluas 428 ekar. Terdapat 808 unit yang merangkumi 2 dan 3 bilik tidur. Selain itu, terdapat lima lagi villa yang direkabentuk berhadapan dengan kolam renang.

Salah Satu ciri utama dalam reka bentuk Cerrado Suites adalah dek persekitaran yang besar di aras podium yang merangkumi seluas 2 ekar. Ruang bersama ini menempatkan semua kemudahan termasuk kolam renang dan rekreasi, dewan serbaguna, gimnasium, dan ruang kecergasan untuk golongan muda dan tua. Kemudahan ini diselingi dengan kawasan rehat yang berbentuk organik.

Apabila fasa kedua selesai, pembangunan Cerrado ini akan dilengkapi dengan ruang rekreasi seluas 4 ekar dan boleh di akses oleh kedua-dua fasa pembangunan. Satu lagi ciri khas dari projek ini adalah pemutusan hubungan dalaman yang menawarkan tahap keselamatan dan privasi tambahan untuk semua penduduk.

Sebahagian besar unit kediaman direkabentuk agar menghadap ke dek persekitaran yang indah, sementara yang lain akan menghadap pemandangan hijau dan pemandangan Bandar Southville City. Bukan tingkat yang luas di setiap unit meningkatkan pencahayaan semula jadi dan juga meningkatkan aliran pengudaraan bagi setiap unit. Warna-warna lembut dan garis-garis senibina yang halus telah diterapkan didalam rekabentuk pembangunan ini bagi menghasilkan rekabentuk elegan dan kontemporari.



ACS Barker

Anglo-Chinese School Barker Road Extension

Sports and the performing arts take centre stage in ACS Barker Road's new A&A. **Singapore**

Principal Lead and Team Members:
Wendy Tan, Wang Lai Meng, Grace Loh and Clement Chan *Architecture*
Shahrom Mohamed Aniff and Jackson Lee *M&E Engineering*
Goh Teck Sin *C&S Engineering*

A new six-storey annexe block and four-storey indoor sports hall was added to the Anglo-Chinese School Barker Road compound as part of their latest upgrade, offering a more comprehensive learning experience to their primary and secondary school students. The new addition consists of staff rooms, special classrooms and a performing arts theatre. Additionally, a four-storey indoor sports hall complete with basketball and badminton courts, and even a futsal court on its own level, were also added to give students a safe and secure environment for recreational activities.

The special rooms within the new block include a dance studio, music room and Chinese orchestra room. These, along with the performing arts theatre were fitted with special wall panels to preserve acoustic division between the different areas of the block. The sports facilities were also fitted with sound blocks for the same purpose of limiting audio leakage.

As the project is an A&A to an existing school, the design of the exterior façade and fenestrations mimics the signature red brick design of the prestigious ACS clock tower to ensure the new blocks blend in well with the existing architecture.

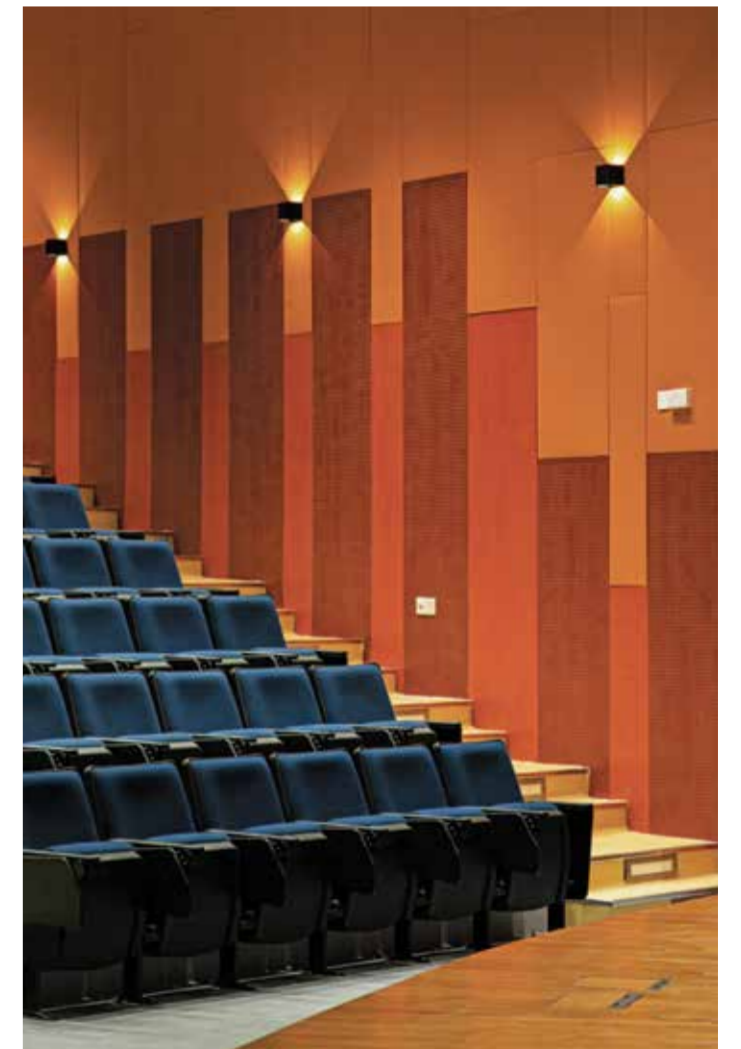




Photo CR: ALMA Resort



ALMA Resort

A nature-inspired resort sandwiched by views of the sea and mountains provides respite for travelers looking to unwind. **Vietnam**

Principal Leads and Team Members:
Ashvinkumar Kantilal, Robert Brodeth, Hoang Huu Dung, Renny Melina and Moses Pumany *Architecture*

Nha Trang is an up-and-coming coastal resort town in southern Vietnam known for its beaches, diving sites and offshore islands. Nestled along the prime Bai Dai beach is ALMA, a tropical resort offering unobstructed views of the Nha Trang Bay from all accommodation options.

With a mountainous backdrop to the west, and the outskirts of an archipelago lining the seascape to the east, ALMA's incredible natural milieu inspired architects to push the boundaries of contemporary resort design. ALMA's final design capitalizes on Cam Ranh Bay's intrinsic tropical splendor, fully accentuating the wondrous coastal views swooning across the immediate horizon.

The first phase of the development includes hotel and apartment blocks, beach villas, cascading swimming pools, a variety of shops, beachfront restaurants and lounges, a theatre and convention hall. Also included in this first phase is the 5.8 Ha Alma Beach Park which consists of an amphitheatre, waterpark, minigolf course, tennis courts, archery range and beach games area.

Amenity pavilions line the resort's entrance, creating a zone for commercial activity, while leaving the beach villa area tranquil and relatively quiet. Trees provide ample shade along walking trails for the comfort of sun shy guests.

Careful attention to weather and seaside conditions informs every element of the architecture. Responsive and durable designs that stand up to sun, wind, and heavy rain help enhance the comfort and safety of all guests and staff. Resilient Design principles were applied to the architecture and masterplanning, from the wind-friendly building massing to altering topography against coastal floods.

ALMA's contemporary clean lines and geometry lend visual order to the environment, making navigating the resort easy and intuitive. The 30-hectare development literally stands out from the rest of the neighborhood owing to a man-made hill that elevates the buildings on the landward side of the resort. This provides elevations with scenic sea vistas as well as a refuge from instances of flooding.

Nha Trang là một trong những thành phố nghỉ dưỡng ven biển nổi tiếng ở Việt Nam với những bãi biển, điểm lặn biển và những hòn đảo xa bờ. Nếp mình dọc theo bãi biển Bãi Dài đặc địa là khu nghỉ dưỡng ALMA, một khu nghỉ dưỡng nhiệt đới có tầm nhìn rộng lớn ra Vịnh Cam Ranh.

Các gian hàng tiện ích nằm dọc lối vào của khu nghỉ dưỡng, tạo ra một khu vực cho hoạt động thương mại, đồng thời tạo cho khu biệt thự ven biển sự yên tĩnh cần có. Cây cối được bố trí xung quanh để tạo ra sự thoải mái cho những vị khách ngại nắng.

Với bối cảnh núi non ở phía Tây và vùng ngoài ở của một quần đảo bao quanh cảnh biển ở phía đông, cảnh quan thiên nhiên đáng kinh ngạc của ALMA đã truyền cảm hứng cho các kiến trúc sư để vượt qua ranh giới thiết kế một khu nghỉ dưỡng đương đại thông thường. Thiết kế của ALMA cho phép tận dụng tối đa vẻ đẹp lung linh vốn có của vùng Vịnh nhiệt đới Cam Ranh, làm nổi bật hoàn toàn khung cảnh ven biển tuyệt vời bao trùm khắp đường chân trời trước mắt.

Thiết kế kiến trúc của khu nghỉ dưỡng đặc biệt quan tâm đến điều kiện thời tiết và điều kiện vùng biển. Với thiết kế bền bỉ, chống chịu nắng, gió, mưa lớn giúp nâng cao sự thoải mái và an toàn cho tất cả khách hàng và nhân viên. Các nguyên tắc thiết kế bền vững đã được áp dụng từ kiến trúc đến quy hoạch tổng thể, từ việc tạo khối tòa nhà thân thiện với gió đến việc thay đổi địa hình vốn có để chống lại lũ lụt ven biển.

Các đường nét và hình khối thanh thoát đương đại của ALMA tạo ra trật tự trực quan cho môi trường, giúp việc điều hướng khu nghỉ mát trở nên dễ dàng. Được thiết kế như một ngọn đồi nhân tạo, khu nghỉ dưỡng rộng 30 ha thực sự nổi bật so với phần còn lại của khu phố. Những tòa nhà được bố trí thấp dần về phía bờ biển nhờ cao độ khác nhau, Alma thật sự mang đến cho khách hàng một khung cảnh biển tuyệt đẹp dù ở họ bất kỳ vị trí nào của khu nghỉ dưỡng cũng như nơi an toàn khỏi các trường hợp lũ lụt.

Giai đoạn đầu của quá trình phát triển dự án bao gồm các khối khách sạn và căn hộ, biệt thự trên bãi biển, hồ bơi, một loạt các cửa hàng, nhà hàng, quán bar bên bờ biển, và cả nhà hát, hội trường. Giai đoạn đầu tiên này cũng bao gồm Công viên Bãi biển Alma 5,8 Ha với rạp hát ngoài trời, công viên nước, sân golf mini, sân tennis, trường bắn cung và khu trò chơi bãi biển.



Kalaw 2

A home amidst undulating hills and the resplendence of nature. **Myanmar**

Principal Leads and Team Member:
Ong Qi Rong *Architecture*
Chatta Channara *Landscape*

Conceptualised as an open, serene recreational space amidst the undulating expanse of Kalaw, Myanmar, the centrepiece of this project is a cluster of villas perched atop hilly terrain, nestled within a tea plantation and landscaped environs.

The terraced contours of the site allow for the villas to be positioned at different altitudes along the slope, while offering unobstructed views of the surrounding mountain range. The interiors of the villas are bright and airy, with ample natural light streaming through the clear glass façades. Utmost care has been taken to respect the existing landscape and preserve most of the greenery, even while curated species of flora are introduced to complement the exterior of the villas.

To enable easier accessibility to the villas, ridged walking trails and pathways wind through the hills without disrupting the natural topography of the site. The driveway leading to the villas is constructed using the cut-and-fill method, creating gentle curves that harmonise with the land profile.

Another key component of this project is a hill station with various leisure amenities, flanked by foliage and immersed in nature for an invigorating "forest sojourn" experience. Visitors seeking an unparalleled vantage point from which to savour scenic vistas may ascend to the lookout point or lounge on the open-air deck and pavilion. They can savour a dip in the cascading lounge pool or reflection pool for a rejuvenating moment or dine amongst the trees on the boardwalk. The hill station's rooftop spaces are also fully utilised as a children's play area, connected by elevated link bridges.

In essence, the landscape design blends in seamlessly with the environment, optimising space on uneven terrain and promoting oneness with the great outdoors through the use of nature-inspired elements such as water features as well as wooden walkways, platforms and steps. These landscape elements were also designed to offer greater privacy to the residents of Kalaw.

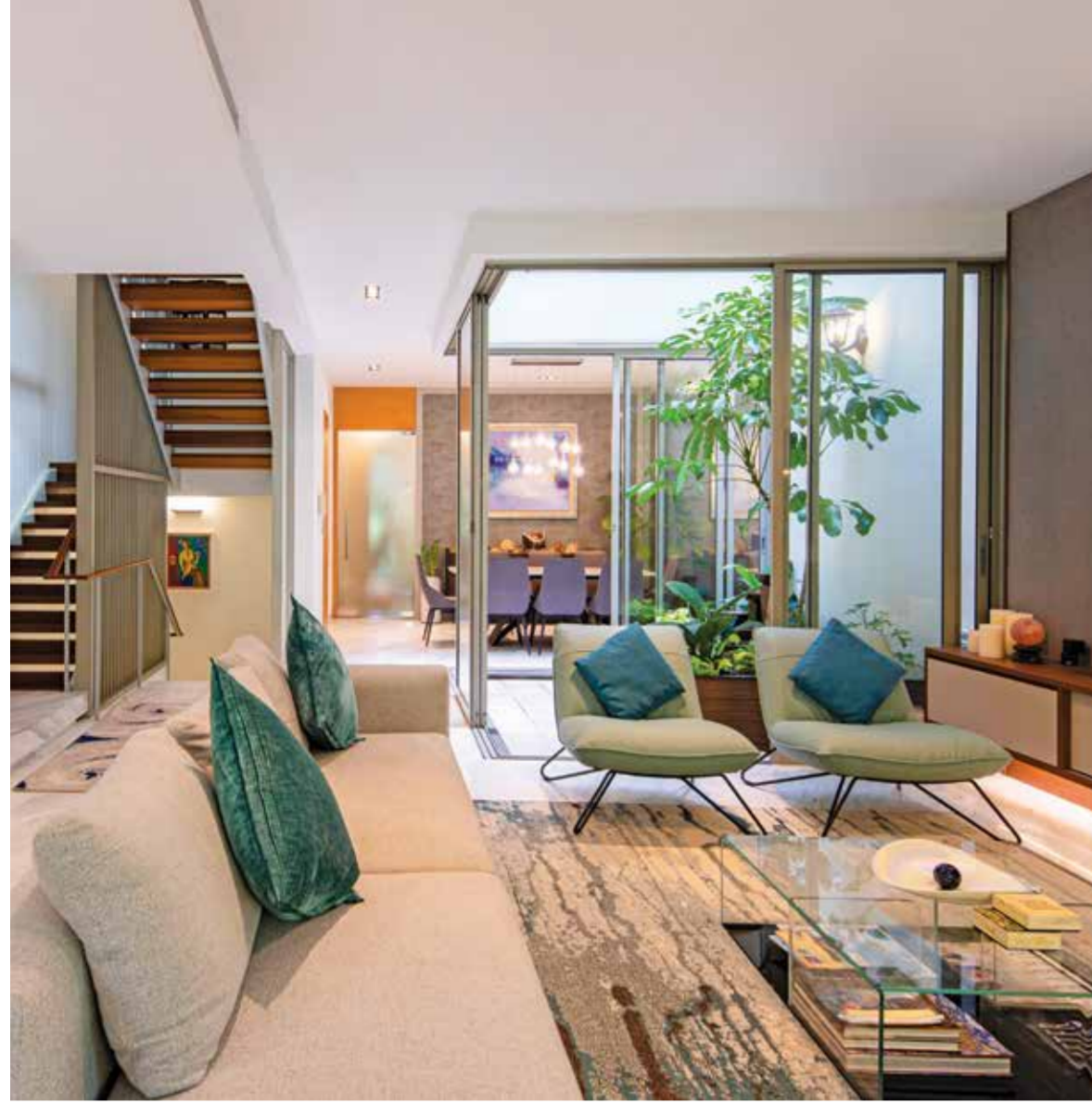


စိတ်ကူးထဲမှ ပုံစံထားသော တင်လင်းပြင် နေရာ ၊ မြန်မာနိုင်ငံ ကလော မြို့တွင် တည်ရှိသော ကြည့်လင် အေးချမ်းပြီး တောင်ကုန်းတောင်တန်း များ အလယ်တွင် အမှန်ပြေစရာနေရာများ ပါဝင်သော လှိုင်ပြင်ကျယ် ၊ စိမ်းကုန်း၏ အဓိက အချက်မှာ မူလ မြေပြင်အနေအထား အတိုင်း တောင်ကုန်းများပေါ်တွင် စီလာများအား နေရာချထားခြင်း နှင့် ဝန်းကျင် သေသစ် ဖြေယာရှုထောင့်များကို လက်ဖက်ပင်များနှင့် လေကားထပ် ရိုက်ဆင်း အသွင် မနီတီးထားခြင်းပင် ဖြစ်သည်။

မည်သည့် ရေလျှောက်ဆန်သော တောင်ကုန်းဆန်သော မူလမြေပြင် အနေအထားကလည်း စီလာများအား နေရာချထားရာတွင် ဝန်းကျင်ပတ်လည် ရှိ တောင်ကုန်း ၊ ရှုမြင်ခင်းများ ကို အစဉ်းအတားမရှိ ကြည့်ရှုခံစားနိုင်စေရန် တမက်သာလမ်းမူလည်း အထောက်အကူ ပေးနေသေးသည်။ စီလာ၏ အတွင်းပိုင်းနေရာများကိုလည်း လိုအောက်သော သဘာဝ အလင်းရောင် နှင့် လေဝင်လေထွက် များ ရရှိစေရန် မျက်နှာစာပတ်လည် အား မှန်အကြည့်များဖြင့် ထည့်သွင်းစဉ်းစား ထားရှိပါသည်။ ထိုအတွက် နှိုင်းစဉ်းစားပေးရန် နေရာများကိုလည်း အတက်ရောက် ထိန်းသိမ်းထားရန် ဝိုင်ရိုက်ထည့်သွင်းစဉ်းစား ထားပါသည်။ အလားတူပင် သေသထွက် သစ်ပင်ပန်းပွန်များ ဖျိုးစိတ်များ ဖြင့်လည်း စီလာ၏အပြင်ဘက် အလှ ကို ပိုမို ပြုပြင်ညှိစေရန် ထည့်သွင်းစဉ်းစား ထားပါသည်။ စီလာသို့ ဝင်ရောက်နိုင်မည့် အဝင်လမ်းများအား စဉ်းစားရာတွင်လည်း လွယ်လင့်တကူဖြင့် ဝင်ရောက်သွားလာနိုင်စေရန် မူလမြေပြင်အနေအထားနှင့်လည်း ကိုက်ညီစေရန် လျှောက်လမ်းများကို မနီတီး ထားခြင်း ဖြစ်သည်။ စီလာသို့ လာရောက် နိုင်မည့် ကားလမ်းများကို မူ ပိုလျှင်ထူး-လို လှိုင်ပြင် နည်းပညာဖြင့် တည်ဆောက်နိုင်စေရန် ၊ ရိုက်လုံး ဖြေပြင် အနေအထား နှင့် လိုက်ဖက်ညီသော ညင်သာသော အတွေ့အကောက်များ ကိုပါ တည်ဆောက် နိုင်စေရန် ထည့်သွင်းစဉ်းစားထားရှိပါသည်။

စိမ်းကုန်း တစ်လုံး၏ အနှစ်သာရကို မြိုင်ကြည့်မည့် ဆိုလျှင် ပတ်ဝန်းကျင်နှင့် လိုက်လျောညီထွေ ရှိသော ဖြေယာရှုခင်း များ၏လိုက်ဖက်သော အတွဲအစပ် စိမ်းကုန်း အတွင်း မည်သည့်သော မြေအနေအထား ပေါ်တွင် သဘာဝ တရား၏ အနှစ်သာရ အပြည့်အဝ ရရှိနိုင်စေရန် ရေနှင့်ဆိုင်သော ဆက်စပ်နေရာများ သစ်သား လျှောက်လမ်းလေးများ အပြင် ကြည့်ရှုစဉ်းစား လေ့ကားထပ် လေးများကို စိမ်းကုန်းနှင့် လိုက်လျောညီထွေမှု ရှိစေရန် စိမ်းကုန်းမြင့် တိုပွင် ဖြစ်သည်။ မော်ပြုပါ ဖြေယာရှုခင်း ဆိုင်ရာ အချက်အလက်များအား ထည့်သွင်း စဉ်းစားထားခြင်းကြောင့်လည်း လာရောက် အပန်းဖြေ သူများပါမက ကလေးပြုနေ လှထုတရပ်လုံးအား ပိုမိုဆောင်ရွက်ပေး ထိုင်မှု ပုံစံကိုပါ ရရှိခံစားနိုင်ရန် ရည်ရွယ်ပါသည်။

လုပ်မိမ့် စိမ်းကုန်း တွင် အဓိက ကျသော နောက်ထပ် အစိတ်အပိုင်း မှာ အမျိုးမျိုး သော အပန်းဖြေစရာ ဝန်ဆောင်မှု များ ပါဝင်နေသော တောင်ကုန်းစခန်း ပါရှိနေခြင်း နှင့် သစ်ရွက်ကလေးများ နှင့် လှမ်းမြို့ထားသည့် မှာလည်း " သဘာဝ တော တောင်ထဲတွင် " မေ့ထိုင်နေသည့် ခံစားချက် အတွေ့အကြုံကို ရရှိ စေရန် အပြည့်အဝ အထောက်အကူ ပေး နေခြင်း တို့ပင် ဖြစ်သည်။ လာရောက်လည်ပတ် သူများ အနေဖြင့် လည်း တင်လင်းပြင်ကျယ် နှင့် အပန်းဖြေစားနေရာ နေရာများမှ တဆင့် ပြိုင်ဘက်ကင်း ရင်သက်ရှူဖွယ် မြင်ကွင်းများကိုပါ တစ်စိတ်စိတ်ခံစားကြည့်ရှု နိုင်မည့် ဖြစ်သည်။ ထိုအတွက် ပြာကျိုးစီးဆင်း နေသော ရေတွင်းကန် အတွင်းမှ အဆိုပါ ရှု ဖြေခင်းများကို တစ်စိတ်စိတ် ကြည့်ရှုခံစားနိုင်ခြင်း နှင့် အပင်များနှင့် သစ်သားလျှောက်လမ်း လေးများ အကြားတွင် ညစာ စားခြင်းတို့ကလည်း စိတ်ကို တဖန် သစ်လွင် နှိုင်း လာစေနိုင် ပါသည်။ အလားတူ တောင်ကုန်း စခန်း၏ အိုးထပ် နေရာများ အား ဆက်စပ်ထားသော တံတား ယံကလေး များ ပါဝင်သည့် ကလေးများ ဆော့ကစား ရာ နေရာများအဖြစ်လည်း အပြည့်အဝ အသုံးပြု ထားသည်။



PT-House

This luxurious home in a prime area of Bangkok offers a perfect blend of shared and secluded spaces. **Thailand**

Principal Leads and Team Members:
Lalida Leelayoova, Apichad Thanakitcharoenphat, Panupong Youngswang, Chalotorn Sukasem, Worawit Kanlajak and Jakkapun Rungsee
Interior Design



33SMD-House

Contemporary interior design makeover redefines townhouse living. **Singapore**

Principal Lead and Team Members:
Teo Boon Kiat, Lin Long and Dulkifli Bin Kudsi
Interior Design

Located in a leafy enclave just steps from Singapore's bustling Orchard Road retail belt, this five-level home, including a basement and roof garden, spans almost 5,000sqft. It is one of just 10 townhouses and 33 apartments in an exquisitely landscaped gated development.

The house came with ample built-in wardrobes, good quality bathroom fittings and pristine marble flooring, meaning that relatively few changes were needed to make it move-in ready for its new residents, a power couple and their young daughter.

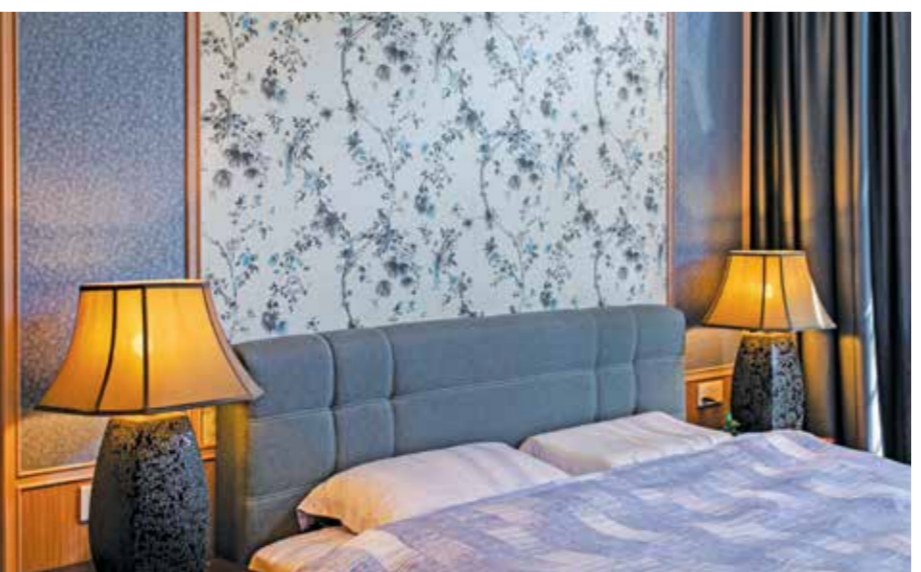
Fresh wall treatments were given to the living and dining areas. A quartz panel sporting a similar grey veining as the existing marble floor was installed in the living room to create a focal point for the TV, under which is a suspended sideboard that hides media appliances and doubles as a display shelf. In the dining room, a somewhat dated blond timber wall was covered by tasteful, subtly textured grey wallpaper and framed artwork. All the furnishings are simple and contemporary, anchored by plush rugs with abstract motifs. Adhering to the owners' Feng Shui preferences, a general colour palette of cool greys and warm browns reflects a balance of yin and yang elements.

Mini courtyards are found across most levels of the home, and these feature easy-care tropical perennials with lush foliage and water features. With their full-height sliding glass panes open, gentle breezes and sunlight permeate the interior, right down to the basement. Indeed, despite its city-centre location, the house feels ensconced in greenery.

On the second level, the master bedroom is a haven of blue and grey tones, evoking an appropriately restful ambience, with a whimsical, English-inspired wallpaper print providing visual interest on the wall above the bedhead.

At the very top of the house is a roof garden, along with an outdoor gym area. Complemented by a couple of outdoor settees, the deck makes an ideal lounging space for the family on cooler days and evenings.

All in, the interior works were completed in five months - it would have taken less time if not for pandemic circumstances - and the family moved into their new abode in May 2021.



PT-House is a luxurious abode within a low-density development located in the prime Sukhumvit area of Bangkok, Thailand. The villa is split into five levels, with a layout that offers ample space for both family interaction and seclusion alike.

Making use of this multi-level layout, the aesthetics of the design also evolve as the residents move from the basement level to the master bedroom on the 3rd floor. The basement level on the ground floor is defined by stone and concrete finishes with special Turkish or Iznik tiles used in the kitchen to offer a clear demarcation of space. The back-of-house area can also be used as a recreational space for family activities or exercise.

Ascending to the 1st floor, the designers made use of the massive open area, combining the living and dining rooms into a single space facing the patio. A mix of marble and rich wood flooring was used as a subtle separator of space clearly demarcating the living and dining functions. On the opposite end, a Japanese-style bar and working room were created as a private sanctuary.

The 2nd floor houses three bedrooms and a guestroom, each luxuriously designed in different pastel colours to mirror the personality of the respective occupant. Finally, the third floor is dedicated entirely to the master bedroom, which boast 'his and hers' separate bathrooms along with two walk-in closets that have ample cabinets and shelves for clothing and accessories.

โครงการบ้านพักอาศัยตั้งอยู่ในพื้นที่ที่หลีกเลี่ยงจากความวุ่นวายจากย่านสุขุมวิท กรุงเทพมหานคร ประเทศไทย ทาวน์โฮมวิลล่าแบ่งออกเป็น 5 ชั้น โดยจัดสรรพื้นที่ใหม่ให้ตอบสนองกับ รูปแบบกิจกรรมปฏิสัมพันธ์ในครอบครัว และพื้นที่ความเป็นส่วนตัว

ผู้ออกแบบจัดพื้นที่การใช้งานตามพฤติกรรมของเจ้าของบ้าน จากชั้นใต้ดินขึ้นไปจนถึงพื้นที่ส่วนตัวที่ชั้น 3 เริ่มจากชั้นใต้ดิน มีการปรับเปลี่ยนรูปแบบห้องต่างๆ ที่มีขนาดเล็ก ด้วยการขยายพื้นที่ให้เชื่อมต่อกันได้ทั้งหมด เติมนั่งร้านพื้นด้วยกระเบื้องโบราณให้กับการแบ่งพื้นที่ได้ชัดเจน ส่วนหลังบ้าน ยังสามารถใช้ประโยชน์ให้เป็นพื้นที่ สันทนาการของเด็กๆ ให้มีกิจกรรมร่วมและใช้ประโยชน์จากพื้นที่ได้มากที่สุด

ขึ้นไปยังชั้น 1 ส่วนหลักของบ้าน ผู้ออกแบบใช้ประโยชน์ของพื้นที่เปิดโล่งขนาดใหญ่ เป็นพื้นที่รับรองแขกและห้องอาหาร หันออกไปยังเฉลียง หน้าบ้าน ใช้การผสมวัสดุระหว่างไม้ และหินอ่อน เพื่อเป็นการแบ่งพื้นที่ให้ชัดเจนของพื้นที่นั้นๆ มีโต๊ะซิมและห้องพื้นที่ทำงานและบาร์สไตล์ญี่ปุ่น เพื่อเป็นที่พักผ่อนของเจ้าของบ้าน

ชั้น 2 และ 3 ชั้นไปจัดเป็นพื้นที่ส่วนตัวของสมาชิกในครอบครัว การออกแบบห้องนอน จัดรูปแบบไม้มีความหรูหรา และดูทันสมัย สะท้อนตัวตนและบุคลิกของคนในครอบครัว ด้วยการเลือกใช้โทนพาสเทลเป็นสีคุมโทน แทรกด้วยไม้สีเข้ม และทองเหลือง ในบางมุม ของงานตกแต่ง พร้อมห้องน้ำและห้องแต่งตัว แยกชาย-หญิงออกจากเพื่อให้เกิดประโยชน์การใช้งานได้สูงสุด



PT-House

67EM-House

1920s Straits Chinese house reimagined with lush verdure and contemporary charm. **Singapore**

Principal Leads and Team Members:
ONG&ONG Singapore Architecture
Jerome Tan Lighting

Nestled at the heart of Singapore's first conservation area, 67EM-House is a Straits Chinese terraced house built in the 1920s. ONG&ONG was engaged to renovate the house for a multi-generation family. The project was completed within 20 months and the family moved in just before Chinese New Year in 2020.



The street-facing front of the house features a lush garden of tropical plants and trees which leads onto a patio with built-in cabinets for footwear. In the tradition of such homes, the front door is usually kept open for ventilation, but privacy is ensured with a full-height screen and a sculpture placed as a visual focal point just inside the doorway.

Inside, the house is resolutely contemporary in feel. The architects removed a number of internal walls and partitions, creating an expansive area that integrates living, dining and kitchen functions. A palette of greys, browns and neutral tones creates a timeless, masculine ambience with the floors and selected walls sporting a dark stained-oak finish, while principal bathrooms are clad in silver travertine.

This home comprises two volumes - really a main building and rear extension - linked by a walkway and a spectacular glass bridge across a double-storey airwell with a dramatic green wall. The airwell bathes the interior spaces with light and enables air to circulate throughout the home.

Aside from containing the more public areas of the house on ground level, the main building also holds the master bedroom and a junior en suite, with a mini gym tucked high in the topmost attic area. The rear extension comprises bedrooms, stairs and lift, and more storage.

The second floor features a private sanctuary cum music room where the homeowners spend much of their time. From there, a spiral staircase leads up to a mezzanine level. The high, sloping ceilings with exposed rafters give a loft-like airiness that is further enhanced when the blinds covering a large skylight is drawn back, flooding the space with light and turning the room into a conservatory of sorts.

In the evenings, the garden and airwell feature dramatic uplighting, turning the house into a lush yet intimate retreat within the city centre.



IICK-House

Heritage shophouse reinvented as a modern home with an abundance of natural light and an integrated home office space. **Singapore**

Principal Leads and Team Members:
ONG&ONG Singapore Architecture

Nestled within the central area of the Katong district, IICK-House represents a restoration project befitting the area's architectural heritage along Singapore's East Coast. The clients were particularly enamoured with the shophouse typology due to its multiple levels and highly adaptive spaces. And with work-from-home arrangements becoming the new normal, this layout proved to be highly effective for its purpose. The owners were able to have separate work areas eliminating distraction.

Designers had to work within the specifications set by Singapore's Urban Redevelopment Authority (URA) mandating that they maintain the property's rafters, vents, and other key architectural features, making it a challenge for the design team to bring light and airflow into the elongated interior space.

The solution was to create a dramatic spiral staircase that connects all three levels, offering a mesh in lieu of railings. A round skylight was installed at the top of the staircase to allow natural lighting to filter in while a second one is installed into a flat roof, bringing illumination into the family room. For the junior master bedroom, natural light is introduced via small windows along the perimeter of a jacked roof section.

The second challenge presented itself in the linking of the main building with a back extension which the designers solved by introducing a 45-degree bend in the roof, shoe-horning a doorway under the eaves that leads out to an open terrace facing a study and the helper's room.

The owners had a particular respect for artisans and craftsmanship. Therefore, all the tiles and tiling schemes around the home, including for the pool, kitchen backsplash and bathrooms, reflect a handmade aesthetic, and close attention was paid to the way the tiles were cut and arranged to create herringbone, chequer and other alluring patterns.

The kitchen was designed to be the heart of the home, offering periwinkle blue cabinets within the area that harmonise perfectly with the plunge pool just outside, creating a pleasing indoor-outdoor visual connection.



I05DW-House

A 1960s semi-detached house is reconceived as a fully detached home with a centre courtyard. Singapore

Principal Leads and Team Members:
ONG&ONG Singapore Architecture

Built on a level but long plot of land in the East Coast area of Singapore, I05DW-House presented a few challenges to the architecture team. A southwest-facing frontage meant that any windows on its facade would require some form of brise soleil to deflect the harsh afternoon sunlight. To overcome this, the designers opted to place a swimming pool and a Frangipani tree in the centre of the house, creating a courtyard-style focal point and effectively turning the view inwards. The pool features a bridge connecting the living room to the dining room with separate dry and wet kitchens, and service areas towards the back.

Originally a 1960s-era semi-detached house, the land was deemed wide enough for a fully detached property. This allowed for a lush planting scheme around the plot's perimeter, affording the owners a measure of privacy, while massive floor-to-ceiling glass panes give the ground-floor living spaces the sensation of being a haven within a garden, with ample room to host large parties. A sense of airiness is apparent from the moment one enters the home, thanks to the excellent cross ventilation within. Order and symmetry are also important elements of the design, with key pieces of furniture aligned along a central sightline and flanked by doorways on either side.

Across the first level, white marble floors contrast perfectly with the matte black of the steel window frames and pillars. In the powder room, Gessi fittings in a customised brushed black nickel finish lend a sophisticated elegance against the Calacutta marble tiles. Selected walls were left in a béton brut style, but with the exposed concrete given a special SKK finishing coat, locking in the textured appeal of its timber mold.

Ascending the stairs, the flooring changes to grooved teak planks, indicating a switch to the more private areas of the house. The second level features a generous guest bedroom and bathroom with sun pipe for natural illumination at the front, while a discreet pocket door slides to reveal two multi-purpose areas currently used as home offices. Beyond them, a spectacular glass bridge across the courtyard leads to the principal bedroom - a double-volume space with curved ceiling. Behind another set of pocket doors lie an expansive walk-in closet with Fenix laminate doors and a glass skylight above, and a master bathroom with dual vanity areas.

The third level features another ensuite bedroom with a private roof terrace, ideal for enjoying balmy evening breezes.

The house took two years from planning to construction, and includes automated blinds, lighting, piped-in sound and security systems.



CDPQ

Breathtaking views and elegant interiors adorn a world-class institutional investor's office. Singapore

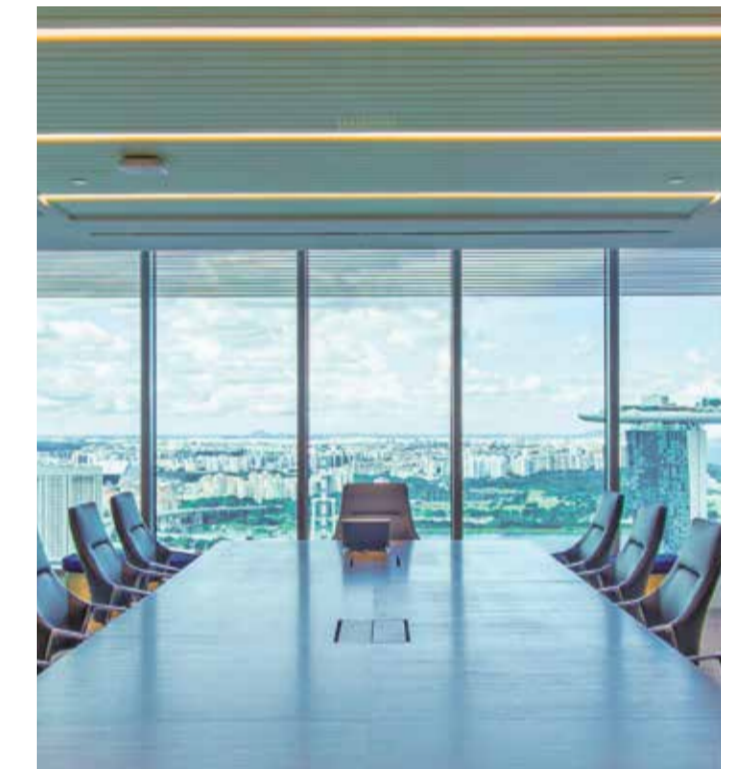
Principal Leads and Team Members:
Elli Wang, Wafi Afandi, Gwendelyn Sng,
Michael Gong and Muhsin Ithnain Workplace Interiors



Following a thorough review process, CDPQ Singapore settled on a unit at One Raffles Quay. The front of house – boardroom and breakout space – were carefully positioned to leverage the breathtaking vistas observed from the top of One Raffles Quay.

CDPQ's interiors are adorned with refined local materials, specially selected and tastefully incorporated in the space. Softer colour tones and materials such as light timber and fabric upholstered walls with nuanced colour blends were meticulously applied to create a soothing atmosphere.

Special emphasis was given in prioritizing the health and wellness of CDPQ's workforce. The general office area is adorned with lush greenery to enhance the human connection to nature, increasing the well-being of its users.

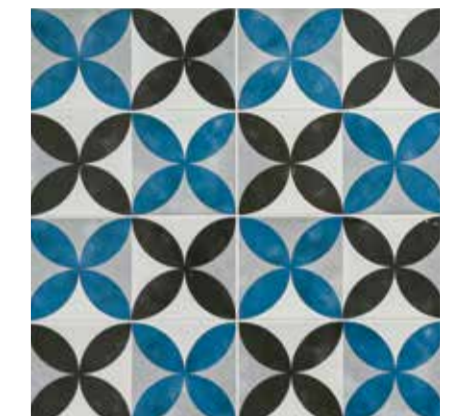




NTUC Health Day Centres for Seniors at Pasir Ris and May Wong

Wellness, inclusivity and principles of Universal Design are at the core of these two new Centres.
Singapore

Principal Leads and Team Member:
Elli Wang, Sarah Rumapea, Yip Jia Chang and Muhsin Ithnain *Interior Design*



Two new NTUC Health Day Centres for Seniors, Pasir Ris and May Wong, recently had A&A works done to cater for the ever-increasing demands for elder care facilities in Singapore. Conceptualised with wellness and inclusivity in mind, these care centres were designed with dementia-friendly features to ensure that patients can socialise and enjoy planned activities in a group setting while receiving essential care services.

Additionally, these centres also include physical activity corners with flexible-use equipment for various forms of rehabilitation, lounges/quiet rooms for patients who require a serene environment and dedicated clinical rooms for patients who require medical care.

Both of the centres have been designed utilising a Universal Design process, in which spaces are optimised for specific uses. Some of these Universal Design elements include wheelchair-friendly accessibility throughout the facilities, and the availability of flexible, multi-function spaces made possible through the use of soft furnishings and/or modular furniture.

Research has indicated that humans have an innate affinity for nature-like elements. Therefore, plenty of biophilic elements were incorporated into the design of the space including lush greenery, colours, patterns and lighting elements. There are also touches of nostalgia, with local Peranakan cultural motifs added in as subtle design features.

NTUC Health





NTUC Health Lakeside - Nursing Home

New nursing home offers comfort, empowerment and positive environment stimuli to its elderly residents. [Singapore](#)

Principal Leads and Team Members:

Wendy Tan, Sivakumar Ratnasingam, Azman Embong, Oliver Reyes Imperial and Joseph Mejia Fermanes
Architecture
 Shahrom Mohamed Ariff, Chng Wei Xiang and Kalandar Naina Mohamed Mohamed Jawith
M&E Engineering
 Goh Teck Sin and Toh Ann Nah *C&S Engineering*



The NTUC Health Lakeside - Nursing Home is imagined as a home in a verdant garden. Its chalet-inspired façade blends into its rural neighbourhood context, while the lush greenery within its compound provides positive environment stimuli for the residents.

The eight-storey building sits within a vibrant neighbourhood, flanked by a special-needs school and community centre, with a shared community garden and connections to Jurong Senior Care Centre (SCC). Its vehicular access comes via Jurong West Street 52, a designated silver zone road.

The SCC is located on the first floor with direct access to a garden. The amenities and dining area on the second floor have their own garden and gazebos to evoke a sense of nostalgia. Residents are housed in the 3rd to 7th storeys, while the 8th floor is reserved for staff, the kitchen and laundry area. These utility spaces were also designed to

have direct access to the lifts. M&E services and photovoltaic panels are incorporated into the roof as part of the project's sustainable solutions.

Some of the walls within the centre were designed to be porous, enabling cross ventilation while still affording its residents a sense of privacy. Each zone is clearly defined using dementia-friendly wayfinding strategies which include demarcation through different colours and graphics, empowering the elderly and giving them autonomy of movement. The pitched roof, eaves and planters serve as weather protection and as safety features, while plenty of activity spaces were incorporated for residents and members of the community.

The bedrooms were designed to be typical and flexible, making it easier to fit out while the modular design was chosen to incorporate Precast Construction and DfMA solutions into its construction.



Lakeside

Senja

Vanguard Senior Care Senja Centre

Accessibility, productivity and efficiency were designed into the MoH's home for the elderly. [Singapore](#)

Principal Leads and Team Members:

Richard Teo Kow Kia, Shahrom Mohamed Ariff, Chionh Ken Kiat and Khin Myat Thet Win
M&E Engineering



The Vanguard Senior Care Senja Centre was commissioned by Singapore's Ministry of Health and designed according to the principles of Universal Design and is entirely compliant with the latest Code of Accessibility in the Built Environment.

The polyclinic will be housed in the 3rd to 5th storeys while the nursing home occupies the 6th to 12th storeys as a dementia-friendly facility with 365 beds. The senior care centre is positioned on the 3rd storey, next to the main drop off, and spans 2 levels with an approximate area of 1,100 sqm.

The MOH Holdings project was also designed with measures to enhance labour efficiency and productivity by incorporating BIM software into work processes and utilised Prefabricated Prefinished Volumetric Construction (PPVC) components. The maintainability of the facility was also taken into consideration during the design process.

To improve accessibility, a connecting bridge was built on the fifth storey linking it to the HDB estate across Senja Road.

NTUC Health Tampines - Nursing Home

Dementia-friendly nursing home designed with BIM and PPVC solutions. [Singapore](#)

Principal Leads and Team Members:

Richard Teo Kow Kia, Shahrom Mohamed Ariff, Chionh Ken Kiat and Khin Myat Thet Win
M&E Engineering



The NTUC Health Tampines - Nursing Home combines a nursing home with a senior care centre. It was built for the Singapore Ministry of Health. The design adheres to the principles of Universal Design and is compliant with the latest Code of Accessibility to ensure that it serves the needs of its intended demographic.

The 550 sqm MOH Holdings senior care centre is strategically located on the first storey, next to the main drop-off point while the third to eighth storeys house the nursing home with 241 beds over an area of 6,193 sqm. The entire facility is designed with dementia-friendly features. Incidentally, this nursing home was the first facility to be temporarily converted into an elderly community treatment facility for COVID-19 patients.

To improve the efficiency of its design and construction process, BIM solutions along with Prefabricated Prefinished Volumetric Construction (PPVC) elements were incorporated into the process.



Tampines

Synergistic Specialisation –

Individually Skilled,
Collectively Dynamic

User experience is at the centre of any aspect of building design. Design encapsulates and augments it. Weaving all this together harmoniously, ONG&ONG offices around Asia are able to provide the full 360 experience, through a team of handpicked specialists.

Singapore Indonesia Malaysia Mongolia Myanmar Thailand Vietnam

360 Solution

Brand Engagement	Environmental Wayfinding	Experience Design	Engineering	Project Management	Project Solutions	Workplace Interior	Masterplanning	Architecture	Interior Design	Landscape	Lighting
Market Insight	Planning and Analysis	User Experience Strategy	Mechanical	Project Management	Construction	Building Studies	Vision & Strategies	Master Planning	Advisory & Consultancy	Master Planning	Architectural Lighting
Brand Audit	Wayfinding Strategy	Service Design Consulting	Electrical	Project Development	Design & Build	Workplace Studies	Land Using Planning	Architecture	Space Planning	Space Planning	Equipment Cost Control
Brand Strategy	Signage System and Design	Design Thinking	Civil	Construction Management	Turn Key Solutions	Space Planning	Connectivity	Ideate and Create	Test Fit	Blue & Green Solutions	Operational Cost Control
Brand Expression	Environmental Graphics	Ethnographic Research	Structural	Cost Management	Contract Works	Interior Design	Urban Infrastructure	Conceptualisation & Analysis	Feasibility Study	Sustainability	Lux Level Calculations
Brand Management			Fire Safety	Place Management		Project Management	Environmental Sustainability Design	Research & Development	Master Design Guidebook	Playground Design	Lighting Controls
Environmental Branding			Environmental			Sustainability	Landscape	Space Planning	Turn Key Solutions		Lighting Audits

Brand Engagement is an analytical process, but also one that requires much imagination. It is about crafting experiences that foster relationships between brands and consumers. With over 27 years of experience and a client list brimming with household names, IMMORTAL is renowned for its branding programmes that have helped many clients grow their businesses. Offering a comprehensive suite of services including Market Insight, Brand Audits, Strategy, Expression, and Management, IMMORTAL is committed to helping any brand create an authentic and enduring identity.

IMMORTAL delivers effective wayfinding, at every point of a journey. It is a system of signs and symbols to enable easy navigation. No matter the complexity, the primary objective is to make every space more user friendly. Wayfinding has the capacity to optimise and enhance the built environment, improving circulation, connectivity and use of space.

Experience Design is about altering human experiences through the process of Design Thinking, where we imagine and conceive in terms of utility. Human experiences are in constant flux, where improvement, progress and advancement unfold and develop over time – ultimately leaving us better positioned than before. At ONG&ONG, our award-winning Experience Design team finds ways to elevate and improve an experience. Whether it's a minor tweak or something completely reimagined, all the projects we work on have one thing in common: making the end-user experience better.

Beneath the veneers of colours, curved lines and textures of all dazzling designs are the hidden machinery and mechanisms that make everything possible. Inventive engineering becomes the basis through which creativity can be transformed from imagination and turned into living, breathing reality. With decades of experience in the industry, Rankine&Hill consultants have collaborated on some of Singapore's most iconic designs. From Mechanical & Electrical to Civil & Structural, as well as Fire Safety and Environmental solutions, we continue to deliver a full-range of comprehensive engineering solutions that bring projects to fruition.

Ensuring projects are well organised and cohesively executed are the fundamentals of our business. But it's more than just putting the right people in touch or assembling the ideal team. Our goal is to connect the dots and tie up the loose ends to make sure projects are as easy and cost-effective as possible. The process is a practical one. First, the objectives and parameters of a given project are properly ascertained. Following which, development is carefully planned and mapped, all in an effort to ensure complete alignment and efficiency throughout the construction phase. For us, success means a stress-free experience for our clients.

Our newest Specialist Studio is ideal for overseeing small to medium-scale projects. Providing Design & Build expertise across a range of industries and sectors, Project X:lon specialises in guiding turnkey projects from concept to completion. Our clients will enjoy the convenience of a one-stop shop solution. Where the knowledge of a multi-disciplinary property and construction consultancy, with extensive local and international experience, can provide a diverse array of services including project management, cost management & quantity surveying, development management and contract work.

The perfect corporate interior goes beyond simply creating functional workspace. Although aesthetic quality and style are a must, the environment must be synergistic and inspirational. After all, productivity is the name of the game. At SCA Design, we go beyond traditional interior design, altering the notion of what a working environment should encompass. Combining in-depth building and workplace studies we determine the ideal parameters for project management. In addition, with input from clientele and the end-user, space planning is used in tandem with flawless interior design, resulting in turn key work spaces that exemplify what the modern office should be.

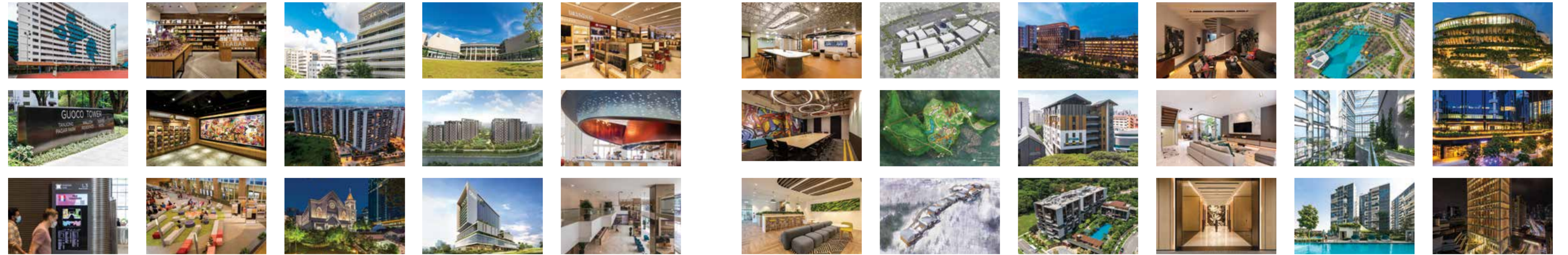
Cities rely on experienced planners when creating infrastructure master plans. The process of conceptualisation demands imagination and a progressive mindset. It comprises a plethora of considerations, including the accessibility to civic amenities, drainage systems and encouraging communities. A well-designed city is future proof, catering to the evolving needs of its inhabitants for decades.

For nearly half a century, ONG&ONG has been synonymous with architectural excellence. Regardless of scale or typology, our extensive experience and repertoire of knowledge have empowered the firm to deliver countless projects of the highest calibre. Today, the firm operates in several countries around the world, as we build on a tradition of excellence, working to grow our reputation for dependability and innovation in the region and beyond - delivering a comprehensive range of services that includes individualized expertise in Master Planning, Brand Engagement, Experience Design, Interiors, Landscape and Lighting.

Residential or commercial, public or private, institutional or infrastructural, interior design is crucial no matter the project. From forming the heart of a home to setting the tone for a corporate or professional space, the potential of a space is realised through interior design. Be it functionality or comfort, on luxury or utility, ultimately the manner in which we conceive a space influences how it will be utilised. At ONG&ONG our interior design experience runs the gamut of typologies and scales, with award-winning projects the world over as proof of our ability to truly define any space.

The modern built environment is increasingly characterised by the integration of nature. Regardless of typology and scale, projects today make it a point to include greenery where possible. At ONG&ONG, our track record of award-winning projects underscores the importance we place on landscape design. From biophilic environments and naturalistic designs, to the creation of sustainable microclimates, our landscape team endeavours to find the optimum levels of greenery to benefit and enhance the built environment.

Lighting design is crucial, yet too often overlooked. Lighting can highlight and accentuate any space. It can alter the ambience or mood of a given setting, bringing life, warmth and more to any environment. Lighting has the capacity to transform a solid project into a superb one, where just the right mix of shadow, light and colour can easily augment the end-user experience. Bright or low-key, fluorescent or neon, simple or intricate, we at ONG&ONG fully appreciate how crucial a project's lighting design can be.



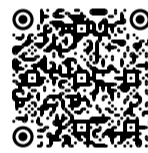
Specialists

The News Stand



High Scores achieved for Digital Acceleration Report

We are proud to announce that in a recent study conducted by Infocomm Media Development, ONG&ONG and Rankine&Hill (Singapore) have managed to garner a high Digital Acceleration Index score of 96/100. Our score of 96 represents a vast lead over other local and top global SME respondents in the sector which scored an average of 25 and 50 respectively. This survey assesses the digital maturity of organisations in Singapore based on a variety of digital adoption factors.



Read more here



Singapore's MoS Recognises ONG&ONG's IDD Efforts

During the opening address at the Singapore Institute of Architects Inaugural Architectural Specifier Market, Singapore's Minister of State, Tan Kiat How, named ONG&ONG as a good example of how a company can benefit by adopting Integrated Digital Delivery (IDD) practices. In his speech, he mentioned our use of the cloud-based Autodesk BIM 360 platform to share building designs. With this platform acting as a single-source-of-truth, all collaborators are always up to date with the latest information.

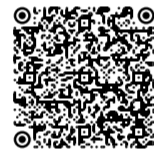


Read more here

ONG&ONG wins Platinum Award at BCA Awards 2021 under IDD category



The ONG&ONG Group has just won the Platinum Award at the BCA Awards 2021 under the Integrated Digital Delivery (IDD) Firm Category. This recognition takes into consideration not just the Group's adoption of technology into work processes but also how the organisation and its employees integrate IDD into the culture of the company.



Read more here

BeyondX now available on demand

If you missed out on the BeyondX 2021 webinar (28-29 July) the full replay is now available on demand via the BeyondX YouTube channel. BeyondX is an annual event championing technology for the built environment. Join our inspiring speakers as they explain and demonstrate how technology and digitalisation is helping the AEC industry achieve higher levels of efficiency.



Watch here



Image CR: The Straits Times and Charge+

Charge+ supports Singapore Post in electric vehicle pilot programme

The recent announcement by Singapore Post of their plans to replace all their lighter vehicles with electric ones by 2026 is welcomed by Charge+, a company vying to become the leading EV charging solution provider for Singapore and Southeast Asia. In Singapore Post's recent pilot programme, Charge+ provided support by supplying its proprietary ultra-slim charger. If successful, the national postal service will replace its motorcycle and van fleets with electric vehicles.



Read more here

In related news, Charge+, as part of a consortium of companies, has managed to win a government tender to install 150 new EV charging points for public car parks in the North and North-East regions of Singapore. This initiative is part of the Urban Redevelopment Authority (URA) and the Land Transport Authority's (LTA) efforts to reach the national target of having 40,000 charging points in public car parks by 2030.



Read more here

ONG&ONG and Rankine&Hill involved in country's efforts to combat COVID-19

As part of Singapore's efforts to combat the COVID-19 pandemic, ONG&ONG and Rankine&Hill helped to build new dormitories in Jalan Tukang and Tuas South Boulevard. These new dormitories were created to reduce the density within the living quarters of migrant workers, which will help mitigate the potential spread of viruses.



Jalan Tukang Dormitory



Tuas South Boulevard Dormitory



Photo CR: Building only - The National Environment Agency (NEA)



Photo CR: Masterplanning view - The National Environment Agency (NEA) and PUB, Singapore's National Water Agency

ONG&ONG to work on new unique Integrated Waste Management Facility

ONG&ONG has been named architects for a new Integrated Waste Management Facility (IWMF) in Tuas Nexus. The project will be co-located at the Tuas View Basin Site along with PUB's Tuas Water Reclamation Plant (TWRP) forming Singapore's first integrated water and solid waste treatment facility.



Read more here



Company essentials on the go

iWeb2* is the perfect companion for every ONG&ONG employee. Whether you want to register for the latest 360U training programmes, apply for leave, file claims and more, this app makes it all just a few taps away on your mobile devices. The latest update to iWeb2 now offers digital name cards, complete with your very own QR code.



Download the App and stay connected!



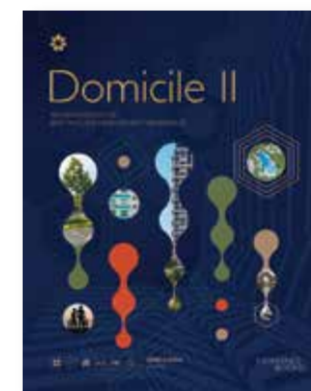
Find out more about ONG&ONG here!

*The iWeb2 App was created for ONG&ONG employees. Not intended for public use.



Blink and you will miss it

If you thought the covers of the previous issues of 360 News and 360 Circle look suspiciously like QR codes, that's because they are! We have received great feedback from clients and employees commending the clever way ONG&ONG has blurred the lines between traditional publications and digital technologies. Following such positive feedback, we have decided to try something even more interesting for this month's cover. Check it out!



Domicile II available for download

With the disruption of the pandemic, home is undoubtedly where many of us have spent the better part of the last year. Domicile II is the latest volume in our anthology series where we take a closer look at our best-in-class high-rise living projects. Join our fictional personas as they transition to a new stage in their lives and seek out appropriate accommodation.



Download

ONG&ONG's Top Learning Champions

We recognise our proactive members who strive for continuous improvement, honing their skills for the benefit of ONG&ONG. Across our offices, these outstanding individuals grow and glow despite the current challenges, and are

beacons of light for all of us. Our 360U continues to hone our expertise, supporting Top Learning Champions and the furthering of the development of our family.

Singapore				
Name	Company	Studio	Points	
1	Robert Brodeth	ONG&ONG	Studio AR040C	52
2	Willie Koh Hong Fatt	Project Innovations	PM1-H9A	43
3	Ivonne Suwama	ONG&ONG	Digital Technology	41
4	Lim Kok Keong	ONG&ONG	Digital Technology	38
5	Arthur Gunawan	ONG&ONG	Digital Technology	38
Malaysia				
Name	Company	Studio	Points	
1	Noor Zharif Bin Noor Rashid	ONG&ONG	Studio 2	36
2	Zulhezan Mohtada	IMMORTAL	CC2	30
3	Mohd Pajian Bin Alias	ONG&ONG	Studio 2	25
4	Rebecca Toh Jia Hui	ONG&ONG	Studio 2	25
5	Angeline Ng Kai Xin	ONG&ONG	HR	24
Vietnam				
Name	Company	Studio	Points	
1	Tran The Phuc	ONG&ONG	Landscape	24
2	Le Ba Cuong	ONG&ONG	Landscape	22
3	Dinh Thanh Ha	ONG&ONG	Landscape	21
4	Tran Ngoc Thuy Linh	ONG&ONG	Studio ID - VN	21
5	Nguyen Huu Phuoc	ONG&ONG	Studio ID - VN	19
6	Nguyen Viet Phuong	ONG&ONG	Studio ID - VN	19
Indonesia				
Name	Company	Studio	Points	
1	Romli	ONG&ONG	Studio AR043	14
2	Renny Melina	ONG&ONG	Studio AR045	13
3	Agustini Taufiq	ONG&ONG	Finance	11
4	Andhi Priatmoko	ONG&ONG	Studio AR043	9
Thailand				
Name	Company	Studio	Points	
1	Nhuu Waraporn Phayungkiatboworn	ONG&ONG	Studio 38	30
2	Tong Chalotorn Sukasem	ONG&ONG	Studio ID 22	16
3	Toni Panupong Youngswang	ONG&ONG	Studio ID 22	15
4	Noom Apichad Thanakitcharoenphat	ONG&ONG	Studio ID 22	14

Social Media buzz!

If you hadn't noticed, our social media profiles are busier than ever. The ONG&ONG Corporate Communications team has been working tirelessly to regularly update all channels with everything you need to know. From news and announcements to the latest and greatest projects. Follow us today.

ONG&ONG
 @ONGONG360
 @ONGONG_360
 ONG&ONG

SCA
 @SCADESIGN360
 @SCADESIGN360
 SCA DESIGN PTE LTD

IMMORTAL
 IMMORTAL SINGAPORE
 @IMMORTAL_SINGAPORE
 IMMORTAL



ONG&ONG
group

NEWS
360



Across the world, reports on how the pandemic has affected industries are rife. Yet to distil the effects of this phenomenon, all it means is just another disruption to the way we live, work and play. And this is something that we at **ONG&ONG** have been addressing for the last five decades. Industries will inevitably face these sorts of challenges, and hence we have chosen to practice what we call disruptive innovation. Instead of grinding to a halt, we chose to take the opportunity to reinvent ourselves, becoming more efficient.

Even before the start of the COVID-19 pandemic in 2020, we had taken some necessary measures to improve our workflow processes. By adopting cloud-based solutions, we had no trouble shifting into work-from-home mode, allowing our teams to continue collaborating with colleagues and project stakeholders across the region even as lockdowns were put in place.

Today, we need to reinvent how we think as an organisation. There is no denying that a New Normal has emerged, changing the behaviour and mindset of the community at large. The acceptance of technology in daily life has accelerated and there is also an increased concern about health, wellness and sustainability issues amongst the younger generation. We must ask ourselves, "Who are we designing for?" It is only when we understand our end-user, that we can effectively create meaningful spaces to suit their needs.

The generation of tomorrow wants sustainability to be at the core of the brands they support. As a mainstay of our industry, it is our responsibility to design and build with the least environmental impact on our planet. To achieve this goal, we look to technology for solutions. Integrated Digital Delivery (IDD), Artificial Intelligence, Virtual Reality and Augmented Reality are just some of the tools at our disposal to drive change and unlock new possibilities in the built environment.

Most importantly, however, we must be united in our purpose. We have visionaries and inspiring figures in our leadership, but meaningful change needs the cooperation of every employee in the **ONG&ONG** Group. From the bottom up, each one of us must embody the purpose of improving the world in which we live. And through that, we will create an #ExperienceBeyond.

Vision

Experience Beyond

Purpose

To Improve the World in which We Live

Role

To Enhance the Well-being of Inhabitants through Excellence in Sustainable Design

ong-ong.com

Chief Editor
Ashvinkumar Kanthala

Managing Editor
Stanley Tan

Creative Director
Stanley Tan

Contributors
Daniel Goh
Emeric Lau
Chang Hui

Designers
Zulhezan
Ryan Lim

Photographer
Wery Ho

Printer
Oxford Graphics
Printers Pte Ltd

BI-ANNUAL NEWSLETTER • NOVEMBER 2021 • MCI (P) 061/08/2021

360 NEWS is published by ONG&ONG Group Pte Ltd. All rights reserved. No part of this newsletter may be reproduced without the permission of ONG&ONG Group Pte Ltd. Opinions expressed in 360 NEWS are those of the writers and are not necessarily endorsed by ONG&ONG Group Pte Ltd. ONG&ONG Group Pte Ltd accepts no responsibility for unsolicited manuscripts, transparencies or other material.

Address all editorial and business correspondence to

ONG&ONG Group Pte Ltd
Corporate Communications Department
510 Thomson Road
#11-00 SLF Building
Singapore 298135

You are receiving this newsletter because you have been involved with ONG&ONG in the past. If you feel you are receiving this newsletter in error, please email corpcomms@ong-ong.com to unsubscribe from our mailing list.

In line with our corporate strategy of sustainable design, this newsletter is printed on PEFC certified paper.

ONG&ONG Group Pte Ltd

510 Thomson Road,
#11-00 SLF Building,
Singapore 298135
t +65 6258 8666
f +65 6259 8648

ONG&ONG Pte Ltd

510 Thomson Road,
#11-03 SLF Building,
Singapore 298135
t +65 6258 8666
f +65 6259 8648

PT ONG and ONG

Grha Niaga Thamrin 1st Floor Unit A1
Jl. K.H. Mas Mansyur
Kebon Melati, Tanah Abang
Jakarta Pusat 10230, Indonesia
t +62 21 2139 2269
f +62 21 2139 2309

ONG&ONG 360

Consultancy Sdn Bhd
Unit 1B-08-1, Blok 1B, Plaza Sentral,
Jalan Stesen Sentral 5,
50470, Kuala Lumpur, Malaysia
t +60 3 2272 2360
f +60 3 2272 3360

ONG&ONG Design LLC

Residence 60, Unit 13-07, 4th Khoroo,
15th Khoroolol Peace Auv 8B,
Ulaanbaatar 13345, Mongolia
t +976 7575 6515
f +976 7575 6525

ONG&ONG Limited

No (93), 3rd floor, Right side, Thura
Thati Street, 8 Ward, Mayangone
Township, Yangon, Myanmar

ONG&ONG Design Co., Ltd

75 / 39 Level 15, Richmond Office
Building, Sukhumvit Soi 26, Klongton,
Klongtoey, Bangkok 10110, Thailand
t +66(0) 2 258 5915

ONG&ONG Co., Ltd

Unit 1003B, Level 10
Centre Point Building 106,
Nguyen Van Troi Street
Ward 8, Phu Nhuan District
Ho Chi Minh City, Vietnam
t +84 28 6285 6178 / +84 28 6285 6179
f +84 28 6285 6169
www.ong-ong.com

Project Innovations Pte Ltd

510 Thomson Road,
#11-03 SLF Building,
Singapore 298135
t +65 6255 3966
f +65 6259 8648
www.proj-innovations.com

Project X-ion Pte Ltd

510 Thomson Road,
#11-03 SLF Building,
Singapore 298135
t +65 6255 3966
f +65 6259 8648
www.proj-xion.com

Rankine&Hill

(Singapore) Pte Ltd

510 Thomson Road,
#11-03 SLF Building,
Singapore 298135
t +65 6278 9588
f +65 6259 8648
www.rankine-hill.com

Rankine&Hill

(Vietnam) Co., Ltd

Unit 1003B, Level 10, Centre Point
Building 106, Nguyen Van Troi Street,
Ward 8, Phu Nhuan District,
Ho Chi Minh City, Vietnam
t +84 28 6285 6178 / +84 28 6285 6179
f +84 28 6285 6169

Rankine&Hill Sdn Bhd

Unit 1B-08-1, Blok 1B, Plaza Sentral,
Jalan Stesen Sentral 5,
50470 Kuala Lumpur, Malaysia
t +60 3 2272 2360
f +60 3 2272 3360

Rankine&Hill

(Myanmar) Limited

No (93), 3rd floor, Right side, Thura
Thati Street, 8 Ward, Mayangone
Township, Yangon, Myanmar
www.rankine-hill.com

SCA Design Pte Ltd

510 Thomson Road,
#11-03 SLF Building,
Singapore 298135
t +65 6253 4886
f +65 6259 8648
www.sca-design.com

IMMORTAL

The Design Station Pte Ltd

510 Thomson Road,
#11-03 SLF Building,
Singapore 298135
t +65 6227 9406
f +65 6259 8648
www.immortal.com.sg

ONG&ONG

ONGONG360

ONGONG360

@ONGONG_360

ONG&ONG

SCA

SCADESIGN360

@SCADESIGN360

SCA DESIGN PTE LTD

IMMORTAL

IMMORTAL SINGAPORE

@IMMORTAL_SINGAPORE

IMMORTAL

SINGAPORE
INDONESIA
MALAYSIA
MONGOLIA
MYANMAR
THAILAND
VIETNAM