

360 NEWS



Unlocking the Future
Holistic Living
Inclusive & Intelligent Design
Reinventing Workspaces

JUNE 2023 • MCI (P) 039/072022

UNLOCKING INNOVATION,
EMBRACING TECHNOLOGY

EXPERIENCE
BEYOND.

Steering the Group Forward

Big on recognising and encouraging progress, ONG&ONG recently promoted employees within the firm and hired new talent to join the Group. As growth is pivotal to the advancement of the company and its people, we take this opportunity to congratulate them. We anticipate these new talents to guide the Group forward as we strive to achieve new milestones that will better serve communities around the region.



Wafi Afandi
Director, Workplace Interior
Studio ID19
SCA Design
Singapore



Chester Goh
Director, Interior Design
Studio ID4
ONG&ONG
Singapore



Siti Jamaliah
Director, Architecture
Studio SI-NSC
ONG&ONG
Singapore



Jim Phan Thanh Tuan
Director, Architecture
Studio 3
ONG&ONG
Vietnam



Simon Loh
Director,
C&S Engineering
Studio 6A
Rankine&Hill
Singapore



David Ting
Associate Director,
Architecture
Studio 9
ONG&ONG
Singapore



Harith Ikhwan Bin Yusof
Associate Director,
Architecture
Studio 2
ONG&ONG
Malaysia



Chow Pak Wei
Associate Director,
C&S Engineering
Studio 6A
Rankine&Hill
Singapore



Chen Soo Pin
Associate Director,
C&S Engineering
Studio 6A
Rankine&Hill
Singapore



Leonard Seow Zhi Shern
Associate, Architecture
Studio AR04G
ONG&ONG
Singapore



Harry Thein Lwin
Associate, Architecture
Studio 39
ONG&ONG
Myanmar



Plabita Das
Associate, Architecture
Studio 1
ONG&ONG
Singapore

ONG&ONG Group Bags Four Awards

The year 2022 ended on a positive note for ONG&ONG as it received four awards from the Buildings and Construction Authority (BCA). The Nee Soon South Community Club was awarded the BCA Green Mark Platinum Award for Zero Energy. Pathlight School (Campus 2) won the BCA Green Mark Platinum Award for Super Low Energy. Last but not least, the BCA Green Mark Platinum Award for New Non-Residential Buildings was awarded to both the Bus Depot and Rail Depot off Tengah Way (Tengah Planning Area) projects. The BCA Green Mark awards recognises developers, building owners and individuals who have achieved outstanding results in environmental sustainability for the built environment.



Satoria Tower Receives Mention in Europe

Satoria Tower – designed by ONG&ONG – was recently awarded a 2022 International Architecture Awards Honorable Mention by The Chicago Athenaeum: Museum of Architecture and Design and The European Centre for Architecture Art Design and Urban Studies. Located in the new CBD area in West Surabaya, Satoria Tower fuses an energetic lifestyle with timeless elegance, with warm and modern interiors framed by expansive windows with golf and city views. The International Architecture Awards are dedicated to the recognition of excellence in architecture and urbanism from a global viewpoint



Read more:



IMMORTAL on Air for its Award-winning Dementia-friendly Wayfinding Strategy

Recently, IMMORTAL was featured in an interview with DBCS X 96.3 好FM, where the team discussed the key design elements of their Dementia-friendly Wayfinding Project Khatib Central and Chong Pang City. The objective was to create a system that assists seniors and those afflicted with dementia in navigating around their neighbourhood safely and independently. This was achieved by formulating wayfinding strategies that support easy navigation between residential blocks and key amenities around the estates, especially within high-traffic zones.

Find out more:



Cloud Advocate of the Year Award Goes to ONG&ONG Group

The ONG&ONG Group has won the Autodesk Cloud Advocate of the Year award. Recognised for its exemplary implementation of Integrated Digital Delivery (IDD) within the organisation, where in 2018 it initiated the workplace, workforce, and workflow transformation for new technology adoption, cross-disciplinary integration, new breakthroughs, and productivity gains. The Group also invested in a cloud-based solution to shift toward a Common Data Environment and to enable remote working - two years before the pandemic necessitated remote working.

The Future of ESG. The Future of Vietnam

Shining the spotlight on ESG is important as brings awareness to the different climate issues and encourages businesses to adopt practices and policies that are better for the environment. Recently, PwC Vietnam, in collaboration with the Vietnam Institute of Directors and Nhip Cau Dau Tu hosted an exclusive event with many experts on ESG. It was an honour to have, our very own David Ching of ONG&ONG Vietnam as part of the panel to share his insights.



Read more:



GoFlow Debuts in Kampong Preah

Water connects every aspect of our lives, but sadly, 771 million people still lack access to safe water today! How can we change that statistic? One way to making a difference is via GoFlow. Powered by the pedal, GoFlow transforms contaminated water into clean and drinkable water. Especially effective for those living in rural areas, GoFlow is slowly but surely making a difference to those living in Kampong Preah, Cambodia. The villagers there use the device to generate clean water from a nearby river.



Watch here:



Joe Fu Re-elected to the SGBC Board

We take immense pleasure in announcing that Joe Fu, ONG&ONG's Director of Architecture has been elected to the SGBC Board for another term under the private sector. He contested against 12 other candidates from the private sector and is one of the five elected by popular votes cast by members from within the built environment fraternity. ONG&ONG extends our heartiest congratulations to Joe.



Awards



As a holistic 360 solution consultancy excelling in infrastructure, commercial and high-density living projects, ONG&ONG's motto, We Understand Asia, allows us to create unique and inspiring spaces, while setting new benchmarks for the AEC industry as we improve the built environment for communities. Our projects have received accolades for transforming lives and evolving the urban ecosystem. Here are some of the awards we won in 2022.

emblems of excellence



Pathlight School
Architecture
BCA Green Mark Platinum,
Zero Energy

Principal Lead and Team Members:
Wendy Tan, Joseph Meija Fermanes, Oliver Reyes Imperial, Gina Reniedo Bondoy, Ryan Teo and Khor Siew Hui *Architecture*



Nee Soon South Community Club
Architecture, Brand Engagement
BCA Green Mark, New Non-Residential Buildings, Platinum

Principal Lead and Team Members:
Wendy Tan, Josephine Loo, Loh Kah Wai, Oliver Reyes Imperial, Lee Hsien Toong and Giovanni Bautista *Architecture*

Stanley Tan and Gary Soh
Brand Engagement



Rail Depot off Tengah Way
Architecture, Brand Engagement
BCA Green Mark, New Non-Residential Buildings, Platinum

Principal Lead and Team Members:
Wendy Tan, Wang Lai Meng, Josephine Loo, Oliver Reyes Imperial, Gina Reniedo Bondoy, Elmer Jay Caparros, Clement Wong, Rachel Tay and Allan Censon *Architecture*

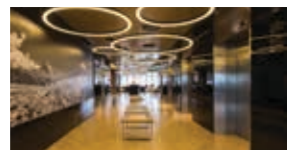
Stanley Tan, Gary Soh, Gisela Ryani and Ryan Lim *Brand Engagement*



Bus Depot off Tengah Way
Architecture, Brand Engagement
BCA Green Mark, New Non-Residential Buildings, Platinum

Principal Lead and Team Members:
Wendy Tan, Josephine Loo, Wang Lai Meng, Oliver Reyes Imperial, Gina Reniedo Bondoy, Elmer Jay Caparros, Clement Wong, Rachel Tay and Allan Censon *Architecture*

Stanley Tan, Gary Soh, Gisela Ryani and Ryan Lim *Brand Engagement*



ONG&ONG Group
Autodesk ASEAN Innovation Awards 2022, Cloud Advocate of The Year



ONG&ONG Group
TechBlazers Awards, Best Adoption – SME Category



Hakka Heritage Centre
Landscape
Singapore Landscape Architecture Award, Analysis & Planning Category, Merit

Principal Lead and Team Members:
Lena Quek and Mabel Lim
Landscape



Celesta Heights
Interior Design
PropertyGuru Vietnam Property Awards, Best Condo Architectural Design

Principal Lead
Bui Thi Bang Tam *Interior Design*



Orchard Sophia
Architecture
PropertyGuru Singapore Property Awards, Best Boutique Condo Development

Principal Lead and Team Members:
Lai Tien Yong and Ryan Chee
Architecture

Goh Teck Sin, Simon Loh and Chen Soo Pin *C&S Engineering*



Artyzen Singapore
Architecture, Landscape
PropertyGuru Singapore Property Awards, Best Hotel Architectural Design

PropertyGuru Singapore Property Awards, Best Hotel Interior Design

Principal Lead and Team Members:
Steven Low, Tong Pey Haw and Cinco Bielza Gregorio *Architecture*

Lena Quek and Mabel Lim
Landscape

Paul Lim Roger, Teo Boon Kiat, Amy Ling and Jasmine Tay
Interior Design and Project Management



FoodFab @ Mandai
Architecture, Brand Engagement
PropertyGuru Singapore Property Awards, Best Industrial Development

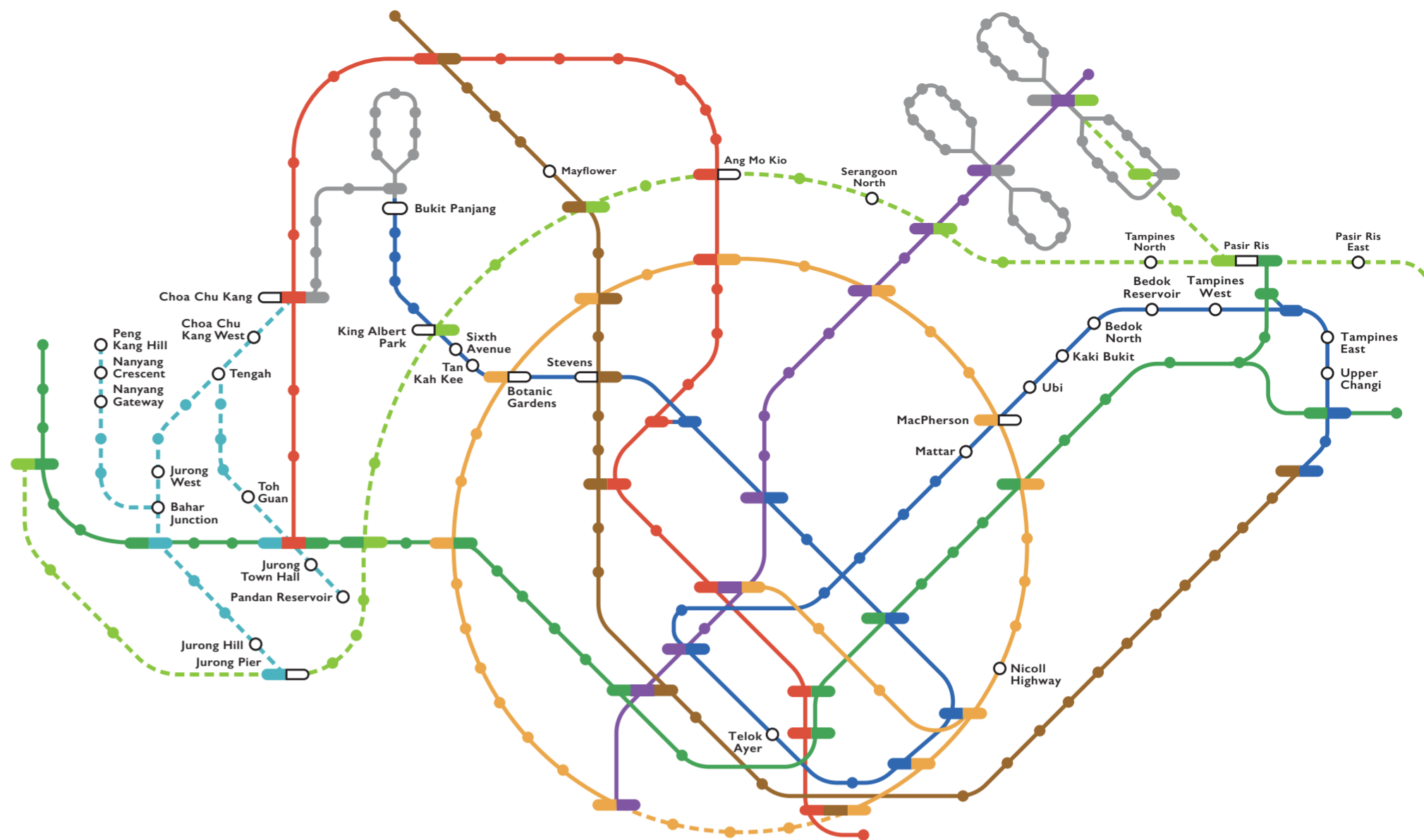
Principal Lead and Team Members:
Ashvinkumar Kantilal, Lai Tien Yong and Anupam Jain *Architecture*

Stanley Tan, Gary Soh and Ryan Lim *Brand Engagement*



Satoria Tower
Architecture
International Architecture Awards, Honorable Mention

Principal Lead and Team Member:
Kurjanto Slamet and Loh Kah Wai
Architecture



CHAMPIONING MASS TRANSIT NETWORKS

Transportation and accessibility are directly related to the growth of any community. We are proud to have made an impact on the success of the transportation infrastructure in Singapore, and also further afield in Jakarta, Indonesia and Kuala Lumpur, Malaysia.

Singapore MRT Stations

Completed

Nicoll Highway
Bukit Panjang
King Albert Park
Sixth Avenue
Tan Kah Kee
Botanic Gardens
Stevens
Telok Ayer
Mattar
MacPherson
Ubi
Kaki Bukit
Bedok North
Bedok Reservoir
Tampines West
Tampines East
Upper Changi
Mayflower

Ongoing

Choa Chu Kang West
Tengah
Jurong West
Bahar Junction
Toh Guan
Jurong Town Hall
Pandan Reservoir
Jurong Hill
Jurong Pier
Nanyang Gateway
Nanyang Crescent
Pasir Ris East
Pasir Ris
Tampines North
Serangoon North
Ang Mo Kio

Singapore MRT/Bus Ancillary Services

Completed

Choa Chu Kang Bus Interchange
Marina Centre Bus Terminal
Seletar Bus Depot
Ulu Pandan Bus Depot

Ongoing

Integrated Train Testing Centre (ITTC)
Sengkang-Punggol LRT Depot Expansion
Changi East Depot
Sengkang West Depot
Tengah Depot

Malaysia, Kuala Lumpur MRT Stations

Completed

Putrajaya Line
Line-wide blueprint for concept design, detailed design & design implementation
Damansara Damai
Sri Damansara Barat
Sri Damansara Sentral
Sri Damansara Timur
Metro Prima
Kepong Baru
Jinjang
Sri Delima
Kampung Batu
Kentonmen
Jalan Ipoh
Kuchai
Taman Naga Emas
Sungai Besi
Serdang Raya Utara

Serdang Raya Selatan
Serdang Jaya
UPM
Taman Equine
Putra Permai
16 Sierra
Cyberjaya Utara
Cyberjaya City Centre
Putrajaya Sentral

Kuala Lumpur-Singapore High-speed Rail

Design Concept

Melaka
Seremban
Indonesia, Jakarta MRT Stations
Completed
Bandungan Hilir
Istora
Senayan
Setiabudi

Awards



REALISING FUTURE CITIES

The mantle is on governments, architects, and other stakeholders to design and build smarter cities that are productive, sustainable, and equitable.

The world is undergoing rapid urbanisation, and the future belongs to cities. According to the United Nations, more than two-thirds of the global population will live in cities by 2050. As the population of urban areas increases, cities will have to evolve to accommodate the needs of their residents. Cities, in the future, will be characterised by multiple technological, environmental, and social innovations that will make them more liveable.

At the core of urbanisation is the notion that people, and technology play a pivotal role in making cities more intelligent and habitable, fostering a strong sense of connectivity with one another and the environment. Urban innovation is particularly necessary today, as the Internet of Things (IoT) is spearheading a new wave of experimentation, where in the era of smart cities, information and communication technologies capture extraordinary amounts of data and deploy their findings to transform economies, social cohesion, and governance.

Smart City is a term that we hear often, but what does it really mean and how do we make cities smarter? The report *Smart at Scale: Cities to Watch, 25 Case Studies Community Paper* by the World Economic Forum states that while the parameters that define smart cities are many, a common definition is that a smart city uses new technologies to find efficient and affordable solutions to urban challenges. Some keywords that define the future city are big data analytics, AI, as well as connectivity.

Future cities will indeed be smart and the benefits to developing smart cities are aplenty and can address challenges that we face such as congestion, burgeoning populations, gaps in infrastructure, limited liveability, vulnerability to climate change, and natural and man-made disasters. Cities are increasingly implementing projects with smart solutions in waste management, traffic congestion, water resource management, smart buildings, efficient use of energy, and renewable energy resources to name a few.

The same report by WEF opines that a city that uses data and digital technologies effectively to plan and manage its core functions becomes more efficient, innovative, inclusive, and resilient.

Integrating digital technologies, especially AI, into a city's systems and services presents new and affordable opportunities for a city to solve its challenges. Technology alone will not be sufficient. Other aspects of future cities should also include society, mixed-use developments, being sustainable, and being inclusive.

If the behaviour of almost every citizen is registered through anonymised data, and 5G technology enables cities to become huge, connected ecosystems, it will be of paramount importance to maximise data value and improve planning and decision-making using AI and data analytics, on the way to a cognitive city. But cities can go even further. Dublin and Singapore, among others, have created Digital Twins – dynamic digital replicas of their physical assets and environments and their interdependencies – for urban planning purposes. These use machine learning to predict future events and trends.

Mixed-use development is the future of city infrastructure. Toronto's ambitious Sidewalk Labs is already making this case. Their developments rely on modular building systems that bring together residential and commercial living with public facilities and parks. They create shared environments that are more amenable to integrating sustainable and energy-efficient building innovations. The flexible construction can evolve with the city's changing needs, doing away with the dynamic of constant tearing down and rebuilding.

Future cities should not be merely limited to their architecture and people but should also extend to other elements such as healthcare. Cities have a responsibility to create a healthy environment for all, especially the aging population. To make this possible, cities can leverage on digital technologies to develop healthcare ecosystems that are not only focused on diagnosing and treating sickness but also by building infrastructure catered to helping senior citizens live independently and with dignity. This is known as Aging in Place (AIP).

AIP enables older adults to live in a familiar environment and maintain current social networks and interactions with close family members.

A way to achieve self-sufficiency amongst the aging population is to have homes and buildings with technology that enables senior citizens to manage their everyday activities.

Many studies have emphasised the need to use information and communications technologies to provide appropriately designed living environments for older adults fitted with sensors and voice-activated services. Such an environment combines modern computing, networking, and smart and innovative devices by helping users to communicate with others through special interfaces.

To surmise, the CEO of ThoughtLab, Lou Celi, told *Cities Today* that cities need to become future-ready to meet the fast-changing expectations of citizens for more digital, inclusive and sustainable urban environments that can accommodate shifts in how city-dwellers will live, work, shop and travel. He also added that presently the cities that are most future-ready have five things in common: they extract more value from data, build broader ecosystems of partners, nurture citizen engagement and trust, proactively protect data security and privacy, and invest more in technology.

In conclusion, future cities will be characterised by a range of technological, environmental, and social innovations that will make them more liveable. Smart technologies will enable cities to collect data and automate various services, while sustainable urban design will reduce their environmental impact.



Synergistic Specialisation –

Individually Skilled,
Collectively Dynamic

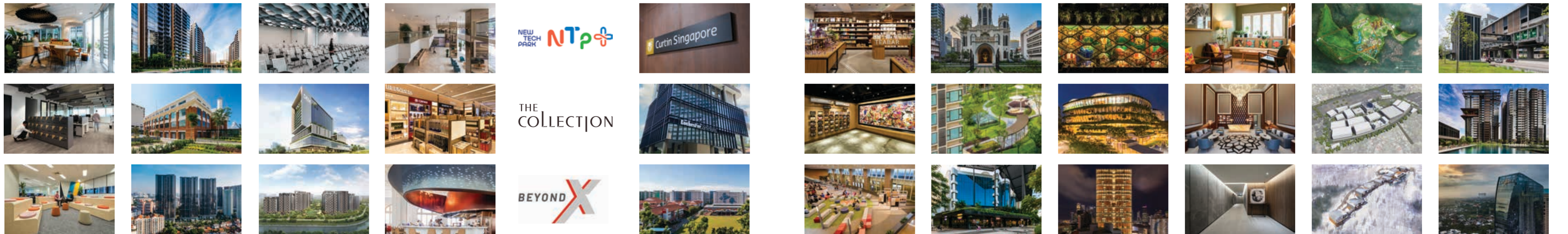
User experience is at the centre of any aspect of building design. Design encapsulates and augments it. Weaving all this together harmoniously, ONG&ONG offices around Asia are able to provide the full 360 experience, through a team of handpicked specialists.

Singapore Indonesia Malaysia Mongolia Myanmar Thailand Vietnam

360 Solution



Workplace Interior	Engineering	Project Management	Project Solutions	Brand Engagement	Environmental Wayfinding	Experience Design	Landscape	Lighting	Interior Design	Masterplanning	Architecture
<p>Building Studies</p> <p>Workplace Studies</p> <p>Space Planning</p> <p>Interior Design</p> <p>Project Management</p> <p>Sustainability</p> <p>Turn Key Solutions</p>	<p>Mechanical</p> <p>Electrical</p> <p>Civil</p> <p>Structural</p> <p>Fire Safety</p> <p>Environmental</p>	<p>Project Management</p> <p>Project Development</p> <p>Construction Management</p> <p>Cost Management</p> <p>Place Management</p>	<p>Construction</p> <p>Design & Build</p> <p>Turn Key Solutions</p> <p>Contract Works</p>	<p>Market Insight</p> <p>Brand Audit</p> <p>Brand Strategy</p> <p>Brand Expression</p> <p>Brand Management</p> <p>Environmental Branding</p> <p>Digital Branding Solutions</p>	<p>Planning and Analysis</p> <p>Wayfinding Strategy</p> <p>Signage System and Design</p> <p>Environmental Graphics</p>	<p>User Experience Strategy</p> <p>Service Design Consulting</p> <p>Design Thinking</p> <p>Ethnographic Research</p>	<p>Master Planning</p> <p>Space Planning</p> <p>Blue & Green Solutions</p> <p>Sustainability</p> <p>Playground Design</p>	<p>Architectural Lighting</p> <p>Equipment Cost Control</p> <p>Operational Cost Control</p> <p>Lux Level Calculations</p> <p>Lighting Controls</p> <p>Lighting Audits</p>	<p>Advisory & Consultancy</p> <p>Space Planning</p> <p>Test Fit</p> <p>Feasibility Study</p> <p>Master Design Guidebook</p> <p>Turn Key Solutions</p>	<p>Vision & Strategies</p> <p>Land Using Planning</p> <p>Connectivity</p> <p>Urban Infrastructure</p> <p>Environmental Sustainability Design</p> <p>Landscape</p>	<p>Master Planning</p> <p>Architecture</p> <p>Ideate and Create</p> <p>Conceptualisation & Analysis</p> <p>Research & Development</p> <p>Space Planning</p>
<p>The perfect corporate interior goes beyond simply creating functional workspace. Although aesthetic quality and style are a must, the environment must be synergistic and inspirational. After all, productivity is the name of the game.</p> <p>At SCA Design, we go beyond traditional interior design, altering the notion of what a working environment should encompass. Combining in-depth building and workplace studies we determine the ideal parameters for project management. In addition, with input from clientele and the end-user, space planning is used in tandem with flawless interior design, resulting in turn key work spaces that exemplify what the modern office should be.</p>	<p>Beneath the veneers of colours, curved lines and textures of all dazzling designs are the hidden machinery and mechanisms that make everything possible. Inventive engineering becomes the basis through which creativity can be transformed from imagination and turned into living, breathing reality.</p> <p>With decades of experience in the industry, Rankine&Hill consultants have collaborated on some of Singapore's most iconic designs. From Mechanical & Electrical to Civil & Structural, as well as Fire Safety and Environmental solutions, we continue to deliver a full-range of comprehensive engineering solutions that bring projects to fruition.</p>	<p>Ensuring projects are well organised and cohesively executed are the fundamentals of our business. But it's more than just putting the right people in touch or assembling the ideal team. Our goal is to connect the dots and tie up the loose ends to make sure projects are as easy and cost-effective as possible.</p> <p>The process is a practical one. First, the objectives and parameters of a given project are properly ascertained. Following which, development is carefully planned and mapped, all in an effort to ensure complete alignment and efficiency throughout the construction phase. For us, success means a stress-free experience for our clients.</p>	<p>Our newest Specialist Studio is ideal for overseeing small to medium-scale projects. Providing Design & Build expertise across a range of industries and sectors, Project X-ion specialises in guiding turnkey projects from concept to completion.</p> <p>Our clients will enjoy the convenience of a one-stop shop solution. Where the knowledge of a multi-disciplinary property and construction consultancy, with extensive local and international experience, can provide a diverse array of services including project management, cost management & quantity surveying, development management and contract work.</p>	<p>Brand Engagement is an analytical process, but also one that requires much imagination. It is about crafting experiences that foster relationships between brands and consumers. With over 27 years of experience and a client list brimming with household names, IMMORTAL is renowned for its branding programmes that have helped many clients grow their businesses. Offering a comprehensive suite of services including Market Insight, Brand Audits, Strategy, Expression, and Management, IMMORTAL is committed to helping any brand create an authentic and enduring identity.</p> <p>Wayfinding has the capacity to optimise and enhance the built environment, improving circulation, connectivity and use of space.</p>	<p>IMMORTAL delivers effective wayfinding, at every point of a journey. It is a system of signs and symbols to enable easy navigation. No matter the complexity, the primary objective is to make every space more user friendly.</p> <p>Wayfinding has the capacity to optimise and enhance the built environment, improving circulation, connectivity and use of space.</p>	<p>Experience Design is about altering human experiences through the process of Design Thinking, where we imagine and conceive in terms of utility. Human experiences are in constant flux, where improvement, progress and advancement unfold and develop over time – ultimately leaving us better positioned than before.</p> <p>At ONG&ONG, our award-winning Experience Design team finds ways to elevate and improve an experience. Whether it's a minor tweak or something completely reimagined, all the projects we work on have one thing in common: making the end-user experience better.</p>	<p>The modern built environment is increasingly characterised by the integration of nature. Regardless of typology and scale, projects today make it a point to include greenery where possible.</p> <p>At ONG&ONG, our track record of award-winning projects underscores the importance we place on landscape design. From biophilic environments and naturalistic designs, to the creation of sustainable microclimates, our landscape team endeavours to find the optimum levels of greenery to benefit and enhance the built environment.</p>	<p>Lighting design is crucial, yet too often overlooked. Lighting can highlight and accentuate any space. It can alter the ambience or mood of a given setting, bringing life, warmth and more to any environment. Lighting has the capacity to transform a solid project into a superb one, where just the right mix of shadow, light and colour can easily augment the end-user experience.</p> <p>Bright or low-key, fluorescent or neon, simple or intricate, we at ONG&ONG fully appreciate how crucial a project's lighting design can be.</p>	<p>Residential or commercial, public or private, institutional or infrastructural, interior design is crucial no matter the project. From forming the heart of a home to setting the tone for a corporate or professional space, the potential of a space is realised through interior design.</p> <p>Be it functionality or comfort, on luxury or utility, ultimately the manner in which we conceive a space influences how it will be utilised. At ONG&ONG our interior design experience runs the gamut of typologies and scales, with award-winning projects the world over as proof of our ability to truly define any space.</p>	<p>Cities rely on experienced planners when creating infrastructure master plans. The process of conceptualisation demands imagination and a progressive mindset.</p> <p>It comprises a plethora of considerations, including the accessibility to civic amenities, drainage systems and encouraging communities. A well-designed city is future proof, catering to the evolving needs of its inhabitants for decades.</p>	<p>For nearly half a century, ONG&ONG has been synonymous with architectural excellence. Regardless of scale or typology, our extensive experience and repertoire of knowledge have empowered the firm to deliver countless projects of the highest calibre.</p> <p>Today, the firm operates in several countries around the world, as we build on a tradition of excellence, working to grow our reputation for dependability and innovation in the region and beyond - delivering a comprehensive range of services that includes individualised expertise in Master Planning, Brand Engagement, Experience Design, Interiors, Landscape and Lighting.</p>



www.sca-design.com



www.rankine-hill.com



www.proj-innovations.com



www.proj-xion.com



www.immortal.com.sg



oxd.ong-ong.com



www.ong-ong.com

Specialists



ONG&ONG Group

Curtin Singapore

Spearheaded by Project Innovations, Curtin Singapore which recently moved to a new location, applied the 360 Solution by ONG&ONG to optimise its use of space. [Singapore](#)

360 - Principal Leads and Team Members:

Paul Roger Lim, Jasmine Tay, Michelle Wong and Werty Ho *Project Management*

Eili Wang, Yip Jia Chang and Muhsin Ithnain *Interior Design*

Joe Fu and Tan Wei Sheng *Architecture*

Stanley Tan, Gary Soh and Ryan Lim *Brand Engagement*

Goh Teck Sin, Henry Gunawan and Khine Zar Zar *C&S Engineering*

Curtin University has a number of global campuses across the world, including one in Singapore, which officially opened in November 2008 as a standalone institution at Jalan Rajah, where it flourished for close to 14 years. Now, Curtin Singapore has found a new home at The Alpha in the Singapore Science Park.

Occupying the second, third, and fourth level in the U-shaped building, Curtin Singapore needed a space efficient design, which the team delivered by applying the 360 Solution by ONG&ONG Group. In this particular project, the team from Project Innovations,



IMMORTAL, ONG&ONG, SCA, and Rankine&Hill were involved. One of the challenges the team at ONG&ONG Group faced was space limitation as the new campus is much smaller and more compact. Applying nuances that connects the Singapore campus to its parent campus in Western Australia (WA), interior design, placemaking, and wayfinding play important roles to provide undergraduates a better user experience. Divided into three distinctive zones for better connectivity and effective learning, there are both formal and informal learning spaces that enable students to not only develop their knowledge, but also forge lasting friendships.

Using the corporate colours of black and gold helps create a sense of uniformity and gives both the undergrads and staff a sense of belonging and identity. The hexagonal shapes are adapted from the symbol of Curtin University. Murals adorn the walls of the lift lobby area and main entrances of levels two and three. These wall graphics deliver

a welcoming impression and is intended to make students feel as comfortable as possible in and outside the lecture rooms.

The smart use of spaces leaves no area unused. There is collaborative, learning, study, social spaces and recreational lounges. Common areas within the campus grounds are furnished with lounges, beanbags, and other facilities to encourage interaction between students. Big windows in classrooms and lecture halls allow sunlight to stream in and brighten up the rooms. Biophilic addition through the campus proves restorative and gives a break from the concrete space.

A mindfulness of the campus' interior spaces is key to the intuitive signage system for students and staff to navigate around. A map to guide students and visitors at the campus helps pinpoint a person's whereabouts as well as to show the different levels – this makes finding their way around the campus

effortless. Digital signage and other important route-finding directories make visiting the campus grounds an engaging affair.

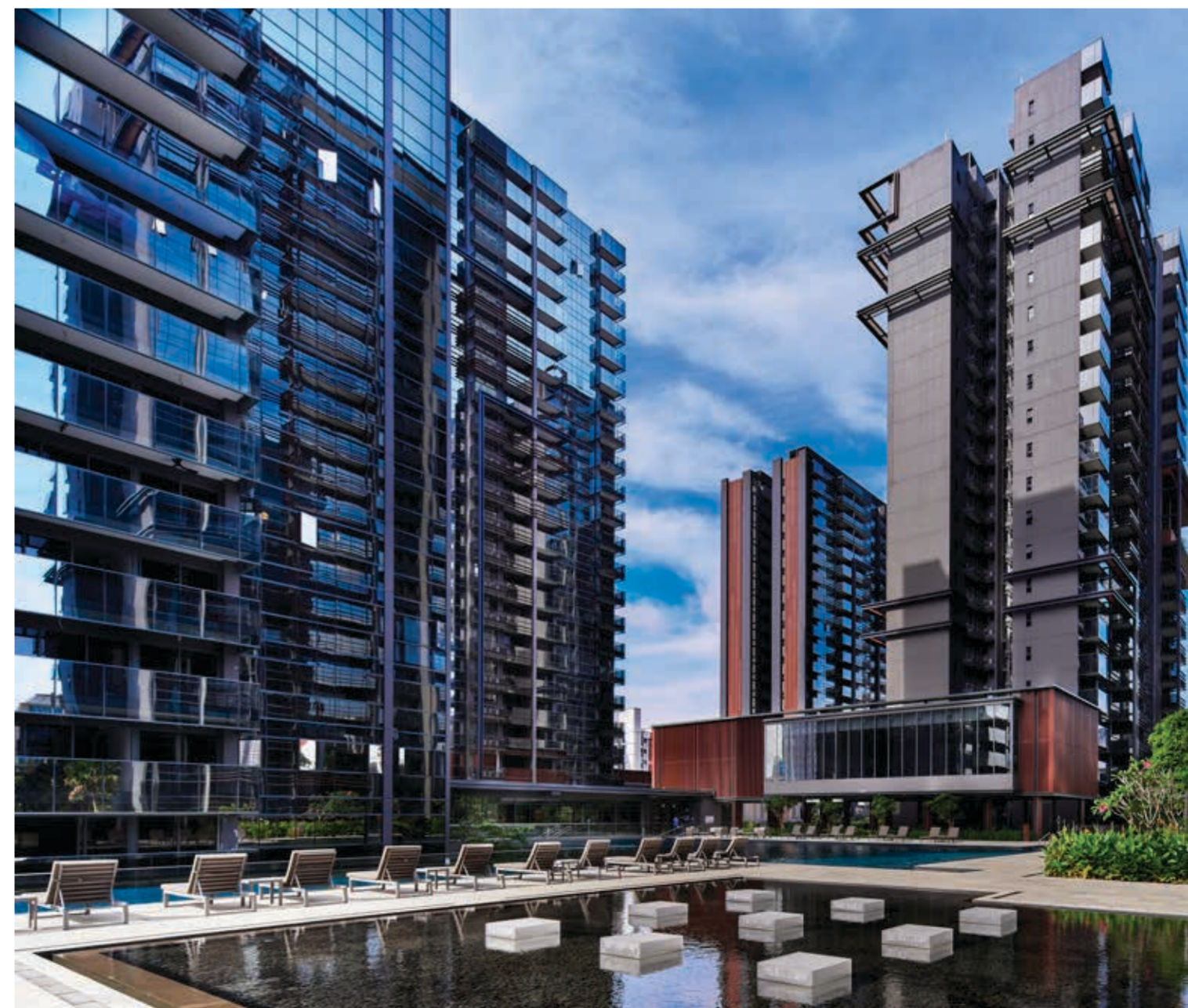
The newly relocated Curtin University is a showcase of its progress and growth, from its roots in technical education through its evolution as an institute of technology and rebirth as a university, Curtin has stayed true to the writings of John Curtin, to "look ever forward".



Curtin Singapore



Jadescape



ONG&ONG Group

Jadescape

Picture perfect at every turn, Jadescape takes inspiration from nature while also celebrating oriental aesthetics.

Singapore

360 - Principal Leads and Team Members:

Ashvinkumar Kantilal and Lai Tien Yong
Architecture

Teo Boon Kiat, Amy Ling, Angie Cheng, Charmayne Aw and Richardo Esguerra Ugay *Interior Design*
Tan Peck Khoon, Shahrom Mohamed Ariff and Teh Yong Hui *M&E Engineering*

Jadescape, a residential development of seven 20-storey residential towers, was designed with an Asian garden theme in mind. Taking inspiration from nature, and more specifically the MacRitchie Reservoir nearby, Jadescape is picture perfect at every turn. Its residential towers resemble a majestic mountain range that encompasses the outline of MacRitchie Reservoir. The arrangement of the towers, sited in verdant landscaping, ensures breathtaking views from every aspect.

A collaboration between ONG&ONG and Tange Associates, this development was planned and designed in a manner where the facades of the

towers are oriented toward MacRitchie Reservoir, creating a connection between them and maximising the view towards the reservoir from each building.

The desire to interrelate and connect the residential complex to the environment led to the concept of sumi-e (ink painting). The team wanted to evoke layers of depth, similar to the overlapping feeling of a mountain scape in sumi-e painting, which brings into balance the surrounding greenery, water and mountains. The towers are also positioned to mitigate sun exposure and optimise natural ventilation. Drawing upon oriental aesthetics, Jadescape's timber-like cladding, frames, and lattice screens soften the building façade.

Instead of monolithic, imposing walls, each building is slightly different, with its own identity, but harmonised within the site. Their placement is layered to create interesting nooks throughout the estate, leading to a variety of areas with variety of ambience and scenery for residents to discover.

Another noteworthy feature that sets this development apart is the way the tennis court has been designed. In order to not obstruct the landscape views for its residents, the two tennis courts are built lower than the ground level. Being on the same level as the car park ensures that residents within the units are not interrupted by noise level and the games taking place on the courts.

The development features rich greenery and water features, including amenities such as a gym, lounge, an infinity pool, an island deck and a sky terrace.



顺福轩项目是一个由七座20层高的住宅塔楼组成的住宅项目，由ONG&ONG和Tange Associates联合开发。项目以亚洲花园为主题进行设计，从附近的麦里芝蓄水池汲取灵感。住宅塔楼的外墙朝向蓄池，以创造塔楼和蓄水池之间的联系，并从每个建筑物都可以欣赏到蓄水池的美景。

项目的设计灵感来源于sumi-e（水墨画）的概念，旨在唤起层次感，类似于水墨画中山景的重叠感，以平衡周围的自然环境。住宅塔楼的仿木外墙、框架和格子屏风借鉴了东方美学，柔化了建筑物的外观。每座建筑都有自己的特性，但在场地内是协调的，通过分层的布局在整个庄园中创造出有趣的角落，供居民探索。

项目还特别注重居民的生活质量，包括设计了引人注目的网球场。为了不遮挡居民的园景视野，两个网球场被建在较低的地面层，并与停车场处于同一高度，确保单元内的居民不会被噪音和比赛打扰。

此外，顺福轩项目还提供了丰富的生态和水景设施，如健身房、休息室、无边际泳池、岛型露台和空中花园等，为居民提供了便利和舒适的居住环境。



ONG&ONG Singapore

Sloane Residences

Reminiscent of a boutique hotel, Sloane Residences – nestled south of eastern Bukit Timah road – features a combination of low and high tower block that appeals to a select group of clientele. [Singapore](#)

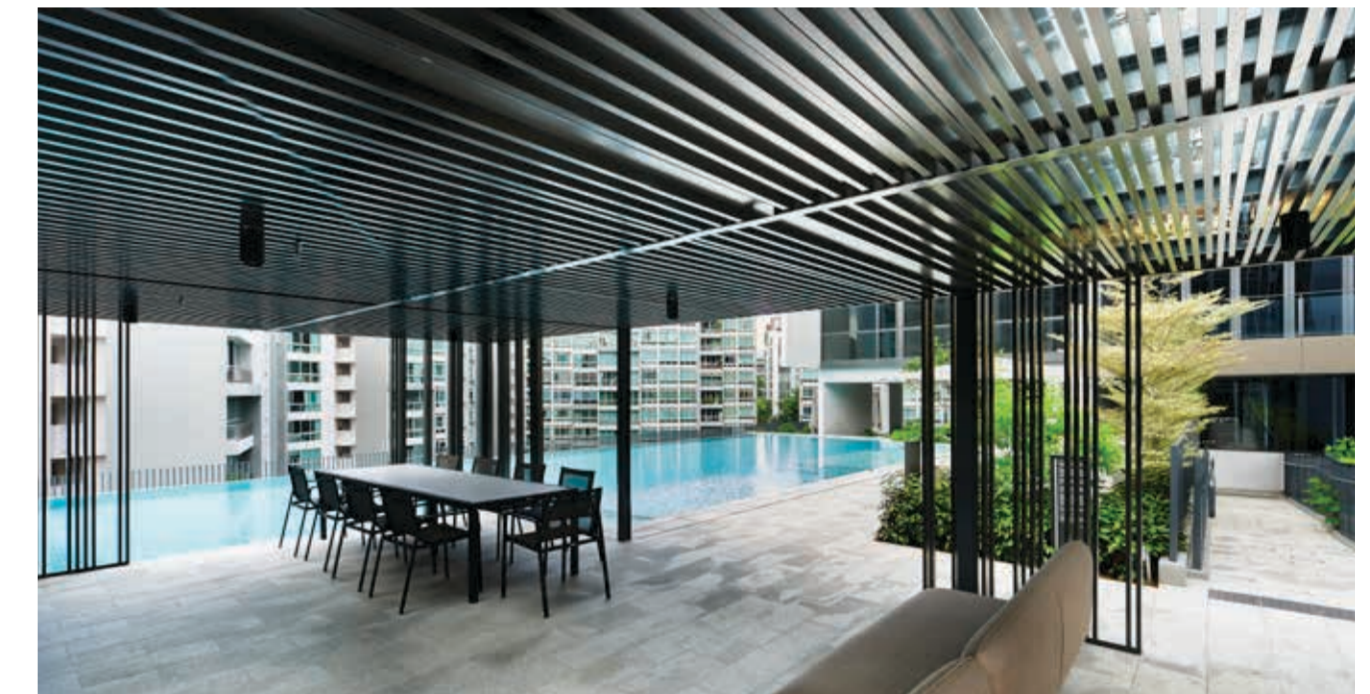
360 - Principal Leads and Team Members:
 Ashvinkumar Kantilal and Lai Tien Yong *Architecture*
 Lena Quek *Landscape*

The linear water feature at the drop off hints at its nature-inspired architecture. A garden lawn lies nearby, while a span of greenery surrounds lounge cabanas, promoting oneness with man and nature. Sloane Residences (formerly Sloane Court Hotel) is an exclusive collection of 52 units in two, three and four-bedroom configurations located in the heart of Singapore. Its proximity to its many amenities such as reputable schools is a boon to young families and comforting for modern urbanists.

Its distinctive hybrid design constitutes of a vertical tower massing (Skyscraper) which interlocks with a horizontal podium (Groundscraper), providing these premium units a view overlooking the neighbouring development's facilities. Conceptually, the Skyscraper portion is designed to house the premium three- and four- bedroom units while the Groundscraper houses a unique collection of two-bedroom Garden Suites.

Communal spaces are aplenty with a luxurious lawn, a playground and BBQ area on the ground floor. On the second and third floors, lounges, yoga decks and pebble seats cater to relaxation of residents. An infinity pool crowns the fourth floor with hydro-massage, a kids' pool with spouts, rain dance features and wet decks; A function room, outdoor dining and pavilion spaces seek to encourage communal gatherings.

The garden-inspired development brings residents close to nature with 6m full-height curtain walls at the lower floors that provide breathtaking unobstructed views to the outdoors. Careful layout planning ensured that the living rooms and bedrooms enjoy a panoramic view of the cityscape

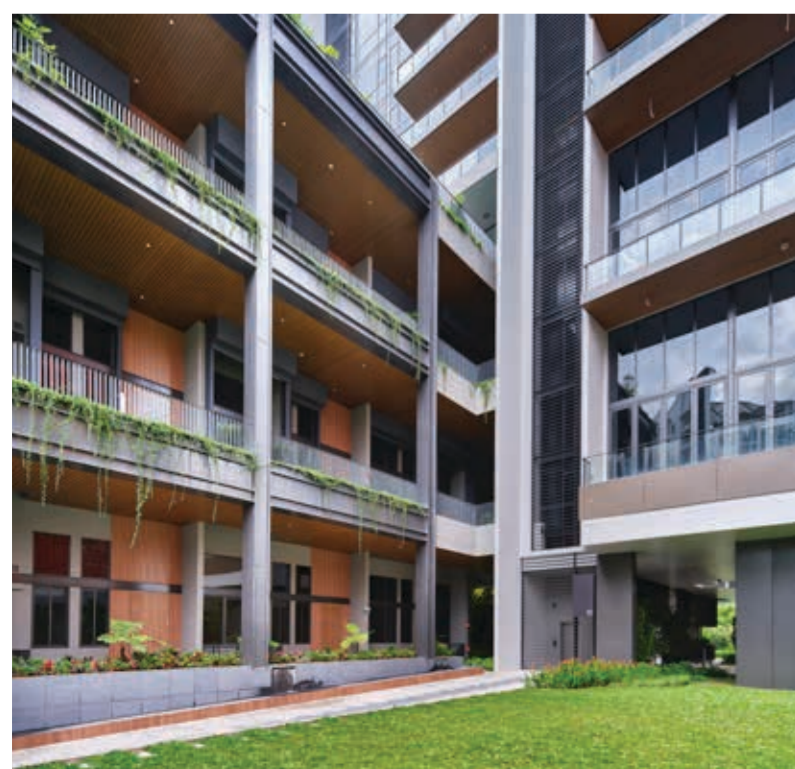


Sloane Residences

and keep corridor spaces to a minimum. Shared gardens for selected units allow residents direct access to greenery.

Within, well-appointed interiors come with premium finishes of engineered timber flooring for bedrooms and marble flooring for the living and dining areas. The balcony ceilings are fitted with composite timber enhancing its nature-themed design. Bedrooms come fitted with built-in wardrobes with magic track for master bedrooms while kitchens come with built-in cabinetry, appliances and fittings.

Finally, to attain its minimalist aesthetic, the details of the floor skirting and white doorframe flush with the wall and are visually connected by a 10mm groove line to give that premium clean signature finish. Units come smart home ready and pander to the tech-savvy urbanite's demand for a fully integrated smart home system.





ONG&ONG Singapore

The Jovell

Offering a picturesque setting from the moment one steps in, The Jovell is a haven to those looking for privacy and peace.

Singapore

360 - Principal Leads and Team Members:

Ashvinkumar Kantilal, Steven Low, Ong Hwee Jin
and Yādana Kay Khine *Architecture*
Lena Quek *Landscape*

Drawing inspiration from the florets of the Jovellana flower, The Jovell is one of the latest condominiums at Flora Drive, with pockets of surprises, excitement, recreation, and rejuvenation. ONG&ONG Group were engaged to provide architecture and landscaping for this resort-themed development.

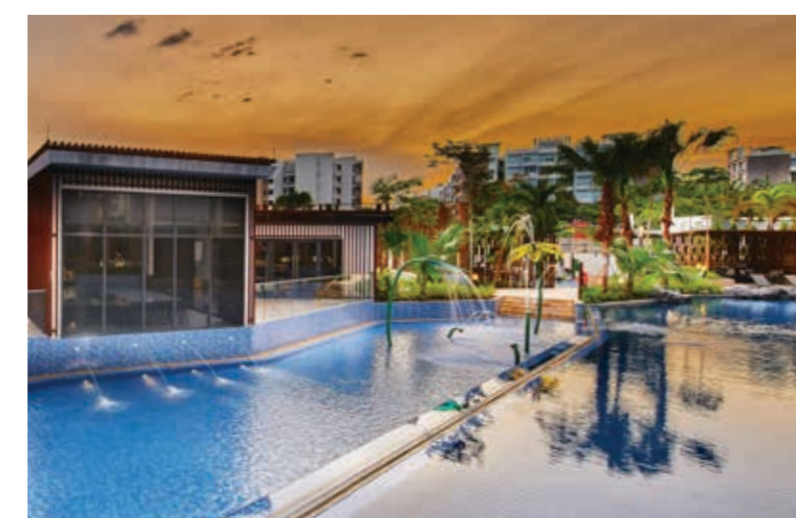
The Jovell comprises of nine 8-storey blocks with a total of 428 apartments. The irregular piece of land that the condominium sits on adds character to the entire development. The 242,000 sq ft site unfolds like an island resort with an extraordinary waterscape and lush tropical gardens. Set amongst sleek architecture, this is truly a place that anyone will love to call home.

From the grand entrance, a 200-metre waterscape meanders through the development. One unique feature of this waterscape is the beach-style swimming bay. Gently sloping and with a texture that mimics a sandy feel underfoot, this area will prove a hit amongst beach lovers.

All the communal spaces of this development are designed to indulge the senses. In every nook, space

has been ingeniously designed to provide residents with areas for wellness, relaxation and other activities. There are pockets that allow one to enjoy a quiet, inspiring retreat with their favorite book or meditate. These areas all benefit from the calming sounds of a charming waterfall.

The layouts at The Jovell are modern, adaptable and functional. The living spaces of each residence are spacious and bright and can be customised to the owner's needs. Thoughtfully curated, every unit embodies luxury, with sophisticated features and clever details being seamlessly woven into the design.



The Jovell



ONG&ONG Singapore

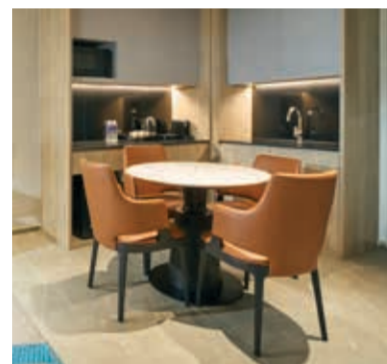
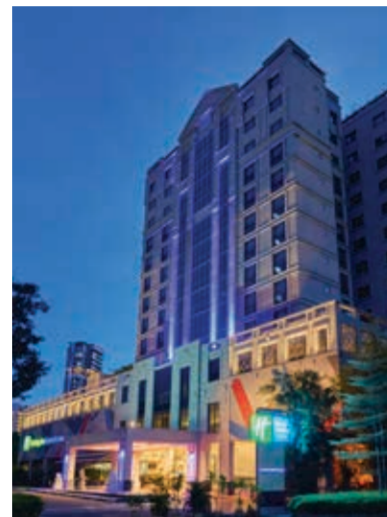
Holiday Inn Express & Suites

The newly refurbished Holiday Inn Express & Suite Singapore Novena Hotel, scheduled to open in 2023, is perfect for both business and leisure travellers.

Singapore

Principal Leads and Team Members:

Kurjanto Slamet, Jasmine Lim, Patricia Widjaya and Giovanni Alarcon Bautista *Architecture*
Teo Boon Kiat, Amy Ling and Ricardo Esguerra Ugay *Interior*



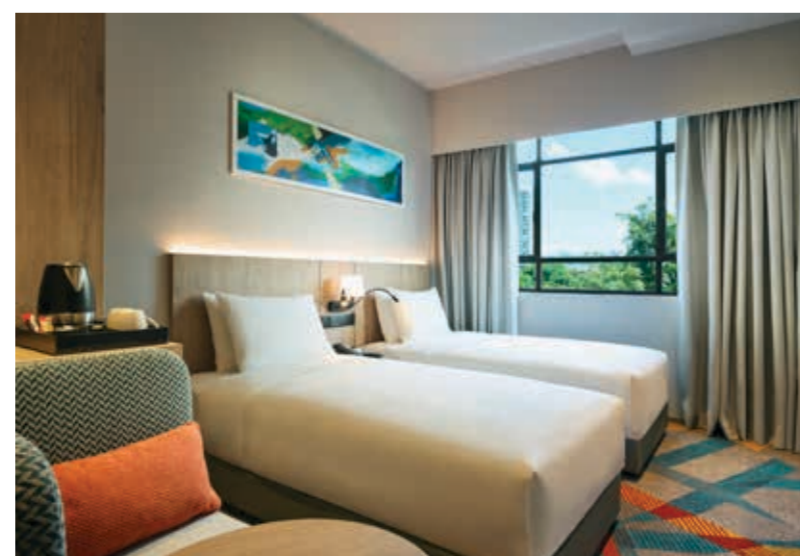
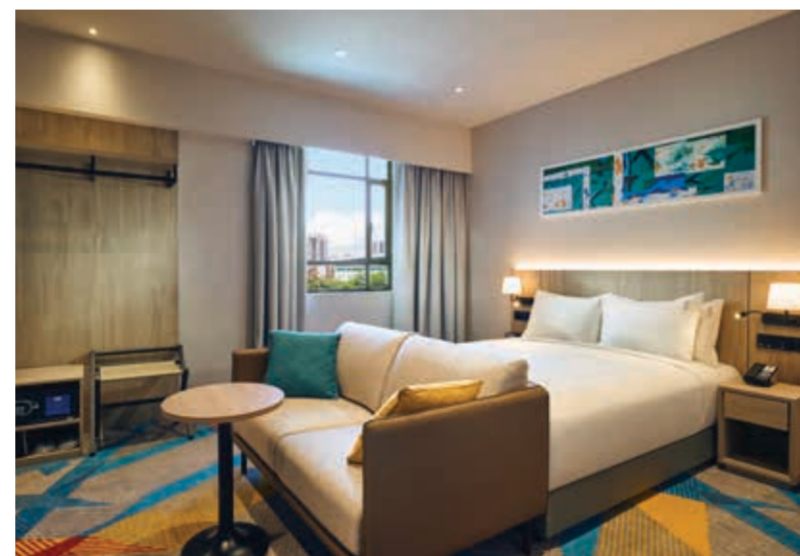
Balestier Road – with a heritage trail of traditional shophouses, Art Deco buildings and temples, is also home to Holiday Inn Express & Suites Novena. The Architecture and Interior Design teams at ONG&ONG worked closely with the owner, Marlow International and the new hotel operator, IHG Hotels & Resorts to transform the existing Quality Hotel.

Faced with the challenging timeframe to catch the post-pandemic hospitality boom, the team moved expeditiously to set the design methodology for the Holiday Inn Express & Suites in Singapore. The teams at ONG&ONG worked hand-in-hand to devise creative solutions of reconfiguring layouts while limiting the extent of additions and alterations works. The clever use of colour palettes and patterning helped to enhance the inherited spaces. Drawing from the area's rich cultural heritage, with

older shophouses juxtaposed against modern structures, the design inspiration sets the tone for travellers to experience vibrancy while exploring this part of Singapore.

Splashes of vibrant hues coupled with the emblematic green and blue Holiday Inn signage spruce up the exterior and gives a preview of the dynamic interior. Surfaces and built-ins are clad in neutral tones, creating a homely and timeless ambience; fabrics and furnishings are energetic and playful, representative of the rich cultural tapestry which is the essence of the design concept.

Holiday Inn Express & Suites Novena aims to showcase that by adapting and modernising existing structures, designers can rejuvenate neighbourhoods and create vibrant, purposeful spaces filled with history and heritage.



ONG&ONG Singapore

Wesley Hall Refurbishment

The refurbishment of Wesley Hall brings architecture and people together in the richest ways possible, uniting purpose and activity. Singapore

Principal Lead
Chester Goh *Interior*

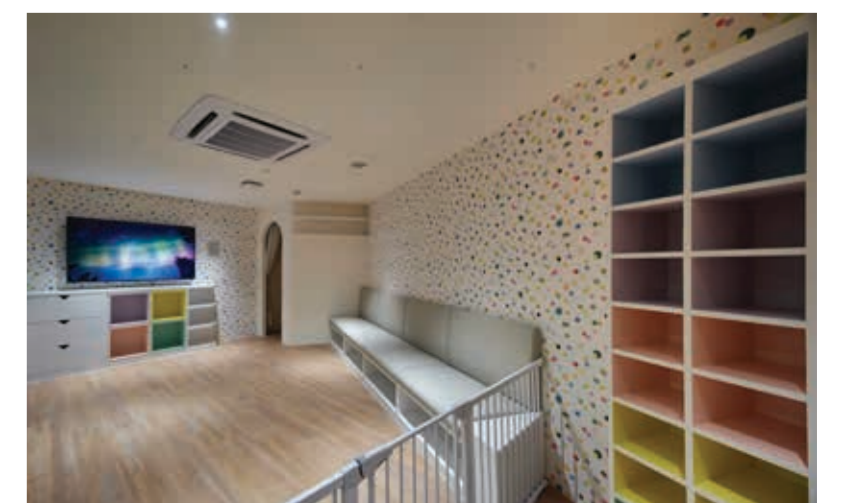


In early 1907, Sir John Anderson, the Governor of Singapore, granted a piece of land at Fort Canning for a church to be erected. Under the leadership of Rev A.J. Amery, the new building was completed and named The Wesley Methodist Church. Then in 1926, a social hall dubbed the Wesley Hall was built. It was a basic rectangular building adjacent to the church that served the simple purpose of being a place for meetings, conferences and concerts.

In the 1960s, the Wesley Hall was demolished, and a multipurpose hall was built in its place. Bricks and plasterworks were used to integrate the old and new buildings. Recently, the hall went through renovation works, which can be considered a bellwether in the evolution of contemporary worship formats. The facility enables the church to hold hybrid sessions, live streaming its services online through a comprehensive AV setup, which includes two production rooms for editing and broadcasting functions.

This A&A project saw ONG&ONG shifting the orientation of the stage, granting audiences from both sides of the hall a better view. Also reflecting the demands of a younger audience, Wesley Hall is equipped with a fully automated lighting system and mist-making machine, evoking a concert experience for all worshippers.

An artfully lit contemporary depiction of a cross on the stage feature wall enhances a theatrical ambience, while custom-made tri-colour benches elevate the seating experience and increased the hall's capacity. Unique, large-format floor tiles complement the acoustic panelling alongside cement screed, giving the sanctuary a youthful feel.





ONG&ONG Singapore

St. Joseph's Church

St. Joseph's Church is steeped in history. Its latest restoration ensures that future generations will also be able to cherish this church. [Singapore](#)

360 - Principal Leads and Team Members:
 Joe Fu and Tan Wei Sheng *Architecture*
 Lena Quek *Landscape*

St. Joseph's Church traces its roots to the 1500s, when Malacca was conquered by Alfonso de Albuquerque and came under Portuguese rule. The resulting Eurasian community gradually spread throughout Southeast Asia, including Singapore. Starting with just 12 Catholics in 1825 under the Diocese of Macau, the congregation swelled to over 1,300 by the turn of the 20th century.

The present St. Joseph's Church building dates from 1912 and was gazetted as a National Monument of Singapore in 2005. Seen from above, it takes the form of a Latin cross, and its design is based on a Neo-Gothic style, with construction undertaken by

Riley Hargreaves & Co. By 2017, having seen more than a century of continuous use - interspersed with several minor renovations - the building was in dire need of thorough restoration.

This process involved multiple stakeholders, including the Roman Catholic Archdiocese of Singapore, the (Urban Redevelopment Authority) URA and National Heritage Board (NHB). ONG&ONG was appointed to manage the mammoth project, which saw experts from as far afield as Europe flown in and consulted on the conservation of important features and artifacts.

Constructed atop marine clay, settlement over the decades meant that the building's structure had shifted. In particular, its roof trusses were found to be inclining between three and five degrees towards the south. These had to be set straight, restored or replaced. The sagging cantilevered choir loft was replaced with one that is under-girded by a steel frame. The ground slab was also cracked and slanted. It had to be reconstructed and realigned.

In line with contemporary requirements, after crucial structural works were carried out to secure the building and its walls were re-plastered, re-bars and a waterproofing membrane were installed to stabilise and secure the ground slab.

The church's unique features and contents required thorough cleaning and refinishing. This included all the statuary and its many remarkable stained glass windows, fabricated by Jules Dobbeklare, a Belgian who also designed the stained glass inside the chapel at CHIJMES (an earlier ONG&ONG conservation project).

St. Joseph's Church also has a high altar of white and coloured Italian marble. In the course of its cleaning and polishing, the marble was found to have a unique pink shade. Another rediscovered feature is a mural of fleur-de-lis motifs dating from 1912 - the lily having strong associations with St. Joseph. Wooden fittings such as the original teak ambo (akin to a pulpit) and worshippers' pews were all sanded down and re-stained, while the original encaustic floor tiles were removed, cleaned and reinstalled.

In addition to the restoration, ONG&ONG undertook the addition of air-conditioning for the church hall and made a number of sensitively crafted modifications. Dormer windows were reintroduced into the church roof based on archival photographs of the building, and these now function as external smoke vents in the event of a fire. Being a heritage site, information plaques have been added to highlight key points of interest in and around the church. Greenery was also planted around the church compound. A subtle landscaping scheme of trees and shrubs enhances the external ornamentation of nature in the decorative relief work and carvings found in the building. Worshippers can also find niches within the landscape for contemplation and prayer; at a reflective pool by the church entrance, as well as benched facing the existing grotto, under the shade of willowy trees.

All in, the restoration of St. Joseph's Church took five years, including delays in part due to the Covid-19 pandemic. Nonetheless, worshippers and heritage lovers alike all agree that the end result was well worth the wait.





The ONG&ONG Group was engaged to provide a 360 Solution involving the architecture, M&E engineering, interior design, and landscaping disciplines. The key design challenge was in ensuring that the new main auditorium, the state-of-the-art Sanctuary Hall, could accommodate up to 1,400 worshippers per service. The architecture team proposed a bold, space-maximising design that called for four basement parking levels, a childcare centre on the ground floor; management offices and four theatrettes on the next floor; and the main hall atop them.

Owing to the challenges of the pandemic, the project was completed in November 2022, several years after its commencement. Construction works involved the deep drilling of bore piles for the basements, during which time the foundations of a few earlier buildings were discovered and had to

be extricated. An innovative top-down construction method was used, allowing the simultaneous building of the basements and the upper levels.

One unique feature of the new church building is its faceted facade, comprising glass fibre reinforced concrete (GFRC) panels, which are lightweight and precast. There are four coloured glass panels that recall the stained glass on the earlier church building, and feature super-sized graphics of biblical significance. Similarly, the landscaping scheme was inspired by parables, such as the Creation Story and the Tree of Knowledge and Evil, depicted as sculptures rendered in steel. Water features and lush greenery line the site perimeter.

With this new building, Trinity@Adam is set to grow its congregation well into the future.



ONG&ONG Group
Trinity@Adam

The redevelopment works at Trinity@Adam, led by ONG&ONG, has enhanced the worship space. It now supports multiples activities and accommodates larger congregations. **Singapore**

360 - Principal Leads and Team Members:
 Ashvinkumar Kantilal, Joe Fu and Ryan Chee
 Architecture
 Lena Quek Landscape
 Kee Choon Yen Interior
 Tan Peck Khoo, Jackson Lee and Gan Quan
 M&E Engineering

Occupying a modestly sized plot along Adam Road, Singapore, Trinity@Adam comprised a church building dating from the early 1990s. As the years passed, the number of worshippers swelled. When the Church opened new premises at Paya Lebar in 2016, it was decided that Trinity@Adam would be closed for a season of redevelopment, which involved demolishing the old building and constructing a larger church.

Trinity@Adam

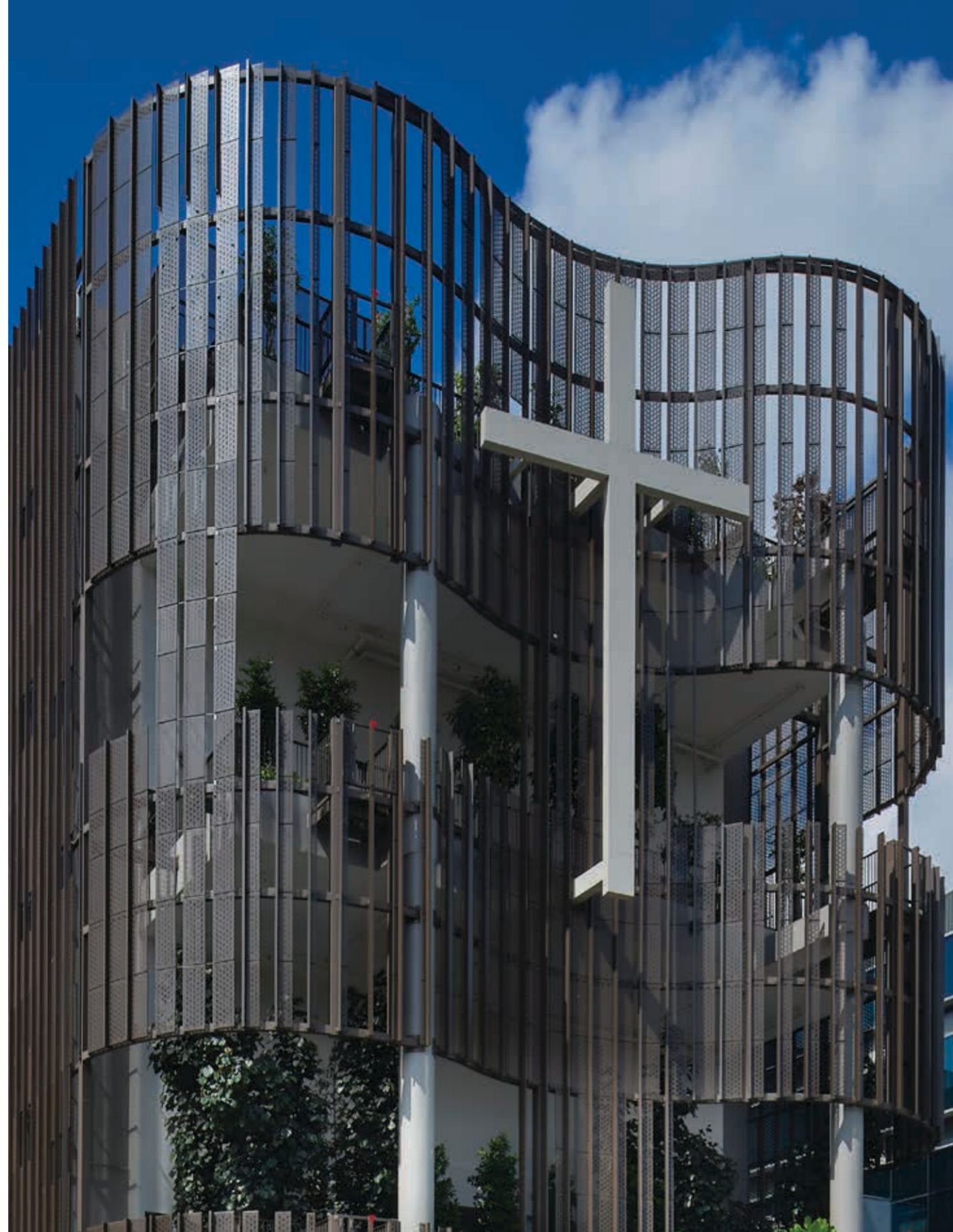
ONG&ONG Group

Paya Lebar Chinese Methodist Church

The newly-refurbished Paya Lebar Chinese Methodist Church reflects the 21st century, and is poised to serve both the current needs and those of future generations of devotees. Singapore

360 - Principal Leads and Team Members:

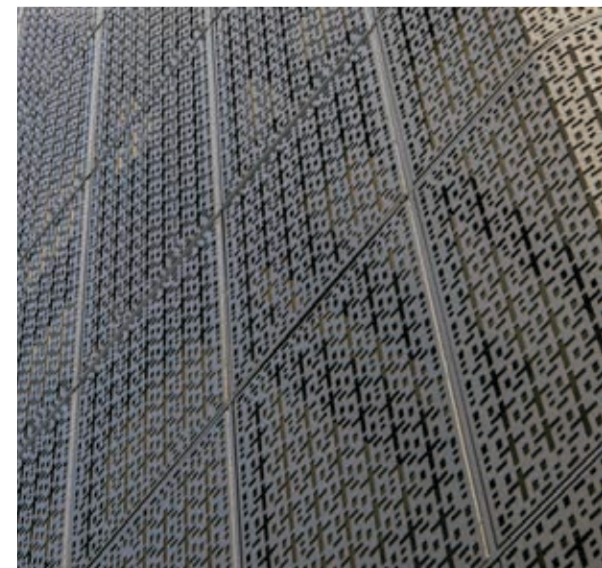
Steven Low, Tong Pey Haw, Ong Hwee Jin and Bambang Azhar *Architecture*
Lena Quek *Landscape*
Richard Teo *M&E Engineering*
Goh Teck Sin, Henry Irsan Gunawan and Derek Low *C&S Engineering*



Built in 1964 along Upper Paya Lebar Road, the Paya Lebar Chinese Methodist Church is a heritage building that has undergone several renovations and additions over the years. It recently underwent further A&A work, which was one of its most extensive to date.

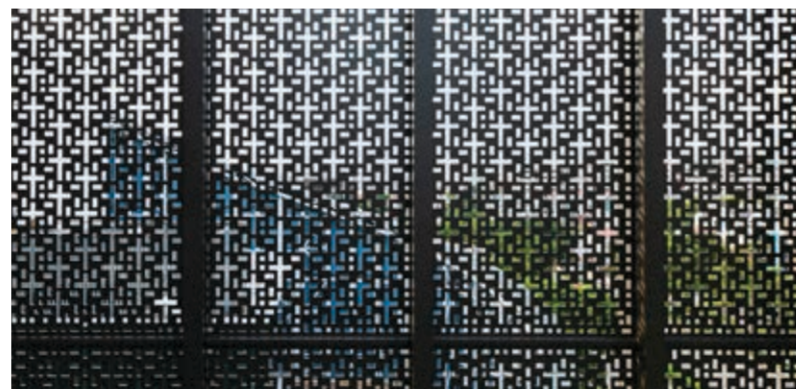
For this project, the teams from ONG&ONG as well as Rankine&Hill were engaged to breathe new life into the space. Among the key concerns that the team addressed were the modest existing sanctuary halls, limited rooms, and lack of parking spaces. The A&A involved the retention of the existing sanctuary halls with new extensions to their fronts and backs, and a new basement. The rear side now houses new classrooms, prayer rooms, offices, and a sky terrace.

The new basement and the conversion of the existing first storey into parking space frees up more space for vehicles, with new bicycle lots supporting



the car-lite movement. The retained sanctuary halls were enlarged and then tastefully redesigned with contemporary sensibilities. The existing classrooms flanking the top portion of the L2 sanctuary hall were removed and replaced with lush sky terraces. These new sky terraces form the new L2 mezzanine. The sky terraces at L2 and L3 serve as an extension of the sanctuary hall's lobby, used as a reception area, or as a space for mingling before and after services.

The landscaping concept draws from biblical references to gardens. At the first storey, a sizeable pocket green flanked by the ingress and egress driveway ramps presents a verdant welcoming frontage to visitors and worshippers. This luxuriant garden continues upwards to the second, third sky terraces and attic roof terrace, providing breakout spaces for the church users to socialise and interact. Additional pocket gardens are also located on the second storey mezzanine, interspersed between cosy alcoves where various activities such as Bible study groups or meditation can take place amidst the greenery.



ONG&ONG Malaysia & Singapore

MRT Putrajaya Line

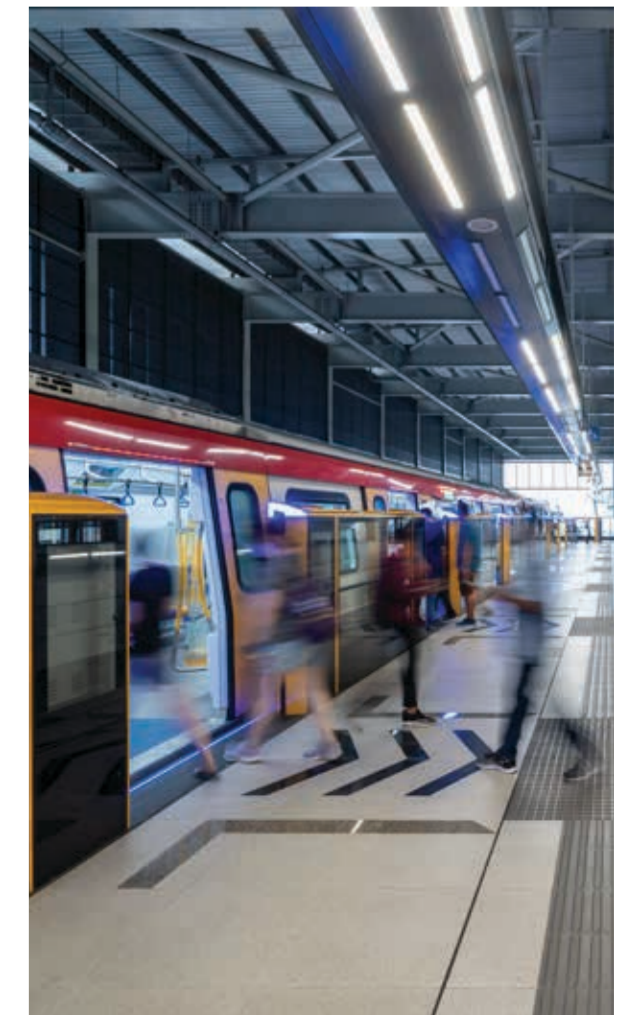
The MRT Putrajaya Line Phase 2 launched in March 2023 is expected to play a big role in reducing traffic congestion, particularly on roads and expressways leading to Kuala Lumpur city centre. Malaysia

Principal Leads and Team Members:

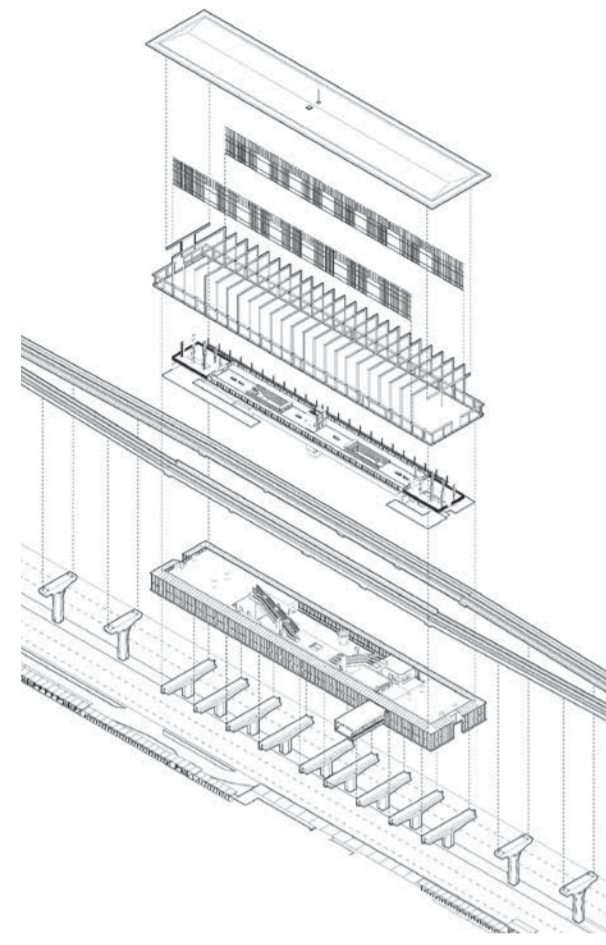
Tan Kee Keat, Louis Tan and Harith Ikhwani bin Yusof *Architecture*

Malaysia Prime Minister, Datuk Seri Anwar Ibrahim said that empowering public transport is crucial in overcoming traffic congestion, which is known to have affected workers' productivity, thus resulting in losses to the country. At the launch of Phase 2 of the Mass Rapid Transit Putrajaya Line on 16 March 2023, Anwar also said, "Problems of public transportation and traffic congestion will raise the issue of productivity, [and] the country's productivity will be affected, because of the hours wasted by employees to get to work."

To prevent traffic congestion from worsening nationwide, the urban population is currently served by a number of LRT, KTM, MRT, and monorail lines. The latest addition to this network is the MRT Putrajaya Line Phases 1 and 2. ONG&ONG were tasked with executing the line-wide elevated station blueprint for the design concept, detailed design as well as design implementation of the Putrajaya Line. The design emphasises the best practices by both Malaysian and International Standards, to ensure the complete functionality of the system, as well as being a unified whole with the built and soft environment.



Blueprint for Putrajaya Line-wide elevated stations - a guideline for Architecture & Use of Space



Design Brief

This MRT system provides access for all citizens including those with special needs. For the stations, a range of generic concept designs consistent with the overall objectives were developed. A standardised entrance design was developed encompassing a range of types in order to offer flexibility to suit different site constraints whilst maintaining a common design language and a clear and recognisable identity.

In terms of local vernacular as well as building styles, the MRT Putrajaya Line stations adopt household motifs, drawing influence from the traditional Malay house. One component is the "Serambi", which is the receiving porch of the Malaysian home before one enters the main hall or living spaces. As a transitional element transcends from traditional Malaysian timber construction vernacular, hence this particular element leads into the idea of a 'Serambi' theme facade and concourse level.

One of the fundamental objectives of the station planning and design is the provision of convenient, safe, and efficient passenger circulation with clear, direct routes, minimum horizontal and vertical travel distances within alignment constraints, minimised changes of direction, and optimised visibility and passenger orientation. The development of the designs for stations satisfies the overall objectives and key design principles for a modern, world-class transit system.

All materials are selected from a range which are appropriate to mass transit systems. The selection of finishes considers the economy, durability, maintenance, resistance to vandalism and corrosion, aesthetics, and availability of materials in the local context. Where applicable, materials were sourced locally such as the rain screens and louvers that mimic the materiality and motifs found in the traditional Malay house.

The new line will serve areas currently without direct access to existing and proposed lines, such as Serdang and Putrajaya, and is also expected to relieve pressure on the KLCC area and of course, the Kuala Lumpur road network overall.



Perdana Menteri Malaysia, Datuk Seri Anwar Ibrahim berkata memperkasakan pengangkutan awam adalah penting dalam mengatasi kesesakan lalu lintas, yang diketahui menjejaskan produktiviti pekerja, sekali gus mengakibatkan kerugian kepada negara. Pada pelancaran Fasa 2 Transit Aliran Massa Laluan Putrajaya pada 16 Mac 2023, Anwar turut berkata, "Masalah pengangkutan awam dan kesesakan lalu lintas akan menimbulkan isu produktiviti, [dan] produktiviti negara akan terjejas, kerana jam yang dibazirkan oleh pekerja untuk ke tempat kerja.

Bagi mengelakkan kesesakan lalu lintas daripada bertambah buruk di seluruh negara, penduduk bandar kini dilayan oleh beberapa laluan LRT, KTM, MRT dan monorel. Tambahan terbaharu kepada rangkaian ini ialah MRT Laluan Putrajaya Fasa 1 dan 2. ONG&ONG ditugaskan untuk melaksanakan pelan tindakan stesen bertingkat seluruh talian untuk konsep reka bentuk, reka bentuk terperinci serta pelaksanaan reka bentuk Laluan Putrajaya. Reka bentuk ini menekankan amalan terbaik oleh Piawai Malaysia dan Antarabangsa, untuk memastikan kegunaan sistem yang lengkap, serta menjadi satu keseluruhan yang bersatu dengan persekitaran yang terbina dan lembut.

Fasa 1 & 2 mempunyai 36 stesen operasi di mana 27 daripadanya bertingkat dan 9 di bawah tanah.

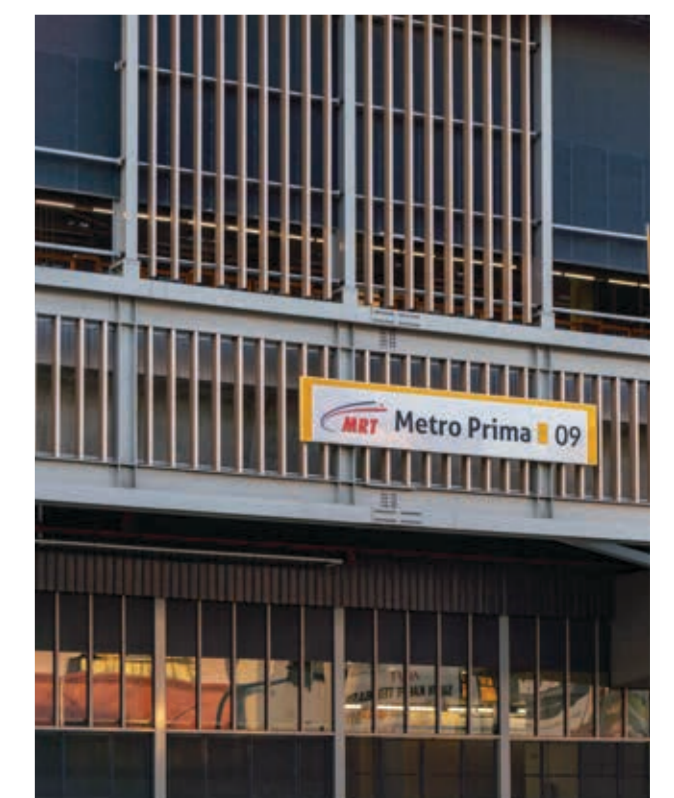
Sistem MRT ini menyediakan akses kepada semua rakyat termasuk mereka yang berkeperluan khas. Untuk stesen, pelbagai reka bentuk konsep generik yang konsisten dengan objektif keseluruhan telah dibangunkan. Reka bentuk pintu masuk piawai telah dibangunkan merangkumi pelbagai jenis untuk menawarkan fleksibiliti agar sesuai dengan kegunaan tapak yang berbeza sambil mengekalkan bahasa reka bentuk yang sama dan identiti yang jelas dan boleh dikenali.

Dari segi vernakular tempatan serta gaya bangunan, stesen MRT Laluan Putrajaya menggunakan motif isi rumah, menarik pengaruh daripada rumah Melayu tradisional. Satu komponen ialah serambi, iaitu anjung penerimaan rumah Malaysia sebelum seseorang memasuki dewan utama atau ruang kediaman. Memandangkan elemen peralihan melangkaui vernakular pembinaan kayu tradisional Malaysia, maka elemen khusus ini membawa kepada idea fasad tema serambi dan aras ruang legar.

Salah satu objektif asas perancangan dan reka bentuk stesen ialah penyediaan peredaran penumpang yang mudah, selamat dan cekap dengan laluan yang jelas, terus, jarak perjalanan mendatar dan menegak minimum dalam kegunaan penajajaran, perubahan arah yang diminimumkan, dan penglihatan dan orientasi penumpang yang optimum. Pembangunkan reka bentuk untuk stesen memenuhi objektif keseluruhan dan prinsip reka bentuk utama untuk sistem transit moden bertaraf dunia.

Semua bahan dipilih daripada julat yang sesuai dengan sistem transit masa. Pemilihan kemasan mengambil kira ekonomi, ketahanan, penyelenggaraan, ketahanan terhadap vandalisme dan kakisan, estetika, dan ketersediaan bahan dalam konteks tempatan. Di mana berkenaan, bahan-bahan diperolehi secara tempatan seperti tirai hujan dan 'louvers' yang meniru kebendaan dan motif yang terdapat dalam rumah Melayu tradisional.

Laluan baharu itu akan memberi perkhidmatan kepada kawasan pada masa ini tanpa akses terus ke laluan sedia ada dan cadangan, seperti Serdang dan Putrajaya, dan juga dijangka dapat mengurangkan tekanan di kawasan KLCC dan sudah tentu, rangkaian jalan raya Kuala Lumpur secara keseluruhan.





ONG&ONG Malaysia

AtWater

AtWater reflects the old-world charm of Petaling Jaya, while delivering a sleek and modern environment, complete with great F&B options and shops for everyday conveniences.

Principal Leads and Team Members:

Ahmad Syazli, Tracy Loh and Muhammad Helmi
Architecture

Located on 5.2 acres of land, a distinctive development is quickly unfolding in the prime area of Section 13 in Petaling Jaya, Selangor. AtWater, by Paramount Property Development, is the latest integrated development that showcases the developer's ability to create versatile spaces.

Targeting those looking for a balance in residential, commercial and retail spaces, AtWater has been designed to seamlessly integrate these components, boasting seamless planning. The project is complemented by lush greenery and water features, culminating in a tranquil and harmonious yet stylish, modern environment that is sure to meet the expectations of the modern consumer.

AtWater residences will be built across two towers, with most units designed in a semi-D configuration to allow for natural ventilation. Tower 1 will hold 310 units while the lower density Tower 2 has just 183 units. The homes are available in sizes of between 670 sq ft and 1,422 sq ft, ideal for young urbanites, retirees, and investors. Other facilities include a variety of pools, reading pods, a fitness zone, badminton court, basketball court, exercise station, reflexology path, and yoga pavilions.



Verdure enconces the facilities, providing privacy and comfort within a peaceful setting. Another unique aspect of the development is that all the facilities and services are designed to enable the elderly to live independently.

Featuring a blend of functional spaces with relaxing lush gardens, water features and pocket parks, AtWater is a contemporary wonderland where one can work, build a family and enjoy life to the fullest. It is a development that ticks all the right boxes.



AtWater

AtWater, yang terletak di Seksyen 13 Petaling Jaya, Selangor, adalah pembangunan bersepadu terbaru oleh Pembangunan Hartanah Paramount. Dengan luas tanah 5.2 ekar, projek ini direka dengan komponen kediaman, ruang komersial, dan runcit yang menyepadukan kesemuanya dengan lancar, ditambah dengan kehijauan dan ciri air yang menambah suasana yang tenang dan harmoni.

Kediaman AtWater dibina merentasi dua menara, di mana Menara 1 mempunyai 310 unit manakala Menara 2 mempunyai 183 unit dengan kebanyakan unit direka dalam konfigurasi separuh D untuk membolehkan pengudaraan semula jadi. Rumah yang ditawarkan berbagai saiz antara 670 kaki persegi dan 1,422 kaki persegi, sesuai untuk golongan muda bandar, pesara, dan pelabur.

Terdapat juga pelbagai kemudahan termasuk kolam renang, pod membaca, zon kecergasan, gelanggang badminton, gelanggang bola keranjang, stesen senaman, laluan refleksiologi, dan astaka yoga.

Projek AtWater menampilkan gabungan ruang berfungsi dengan taman yang subur, ciri air dan taman poket, serta kehijauan flora dan landskap yang menyelubungi kemudahan. Projek ini direka untuk memenuhi jangkaan pengguna moden, termasuk warga tua yang mempunyai kemudahan dan perkhidmatan untuk hidup berdikari.



ONG&ONG Group

HDB Tampines GreenFoliage

HDB Tampines GreenFoliage echoes green in almost every aspect, making it a sustainable development for families and the future. [Singapore](#)

360 - Principal Leads and Team Members:
 Steven Low and Tong Pey Haw *Architecture*
 Lena Quek *Landscaping*
 Shahrom Mohamed Ariff *M&E Engineering*
 Goh Teck Sin, Simon Loh and Derek Low *C&S Engineering*



With more than 1 million flats spread across 24 towns and 3 estates, HDB homes have evolved over the years, from basic flats catering to simple, everyday needs, to homes that meet higher aspirational desires for quality living.

In that vein, the latest HDB development located in Tampines North is the Tampines GreenFoliage, which is inspired by its location near two proposed parks and its landscaping. Envisioned to be a green haven, for this project, the 360 Solution was applied, where the teams at ONG&ONG and Rankine&Hill have lent their Architecture, Landscaping, M&E, and C&S engineering expertise.

Tampines GreenFoliage consists of 542 units of 4- and 5-room flats, housed in 4 residential blocks ranging from 11 to 15 storeys. Choosing a colour palette that is easy on the eyes, the green hues that adorn the building façade communicate peace, balance, and harmony – attributes perfect for people of all ages.

Following through on its green theme, Tampines GreenFoliage meets its eco-friendly goals by introducing new features which include the use of sustainable and recycled products in the development as well as the Pneumatic Waste Conveyance System to provide cleaner waste

disposal. This fully automated system conveys waste by air suction from individual buildings through a network of pipes to a central location for collection.

Other elements are separate chutes for recyclable waste, motion sensor-controlled energy efficient lighting at staircases, and regenerative lifts to reduce energy consumption among others. In terms of distinctive design features, there are feature screens that resemble the vertical growth of creepers, which are used throughout the development. Apart from that, unique tile patterns are used as wayfinding cues to guide the residents around the development. To give the project more character and texture, the designers used formliners to 'clad' the façade to make it more interesting. A formliner is a type of mould used to create textures or patterns on the surface of concrete.

As Tampines GreenFoliage is situated in a well-established housing estate, the communal areas were designed as a series of interactive spaces that cater to young children as well as the elderly. The cluster of facilities within the complex offer an education centre, multiple rooftop gardens as well as covered walkways. HDB housing programmes look at the whole spectrum of needs that make for an optimal living environment for residents. It is a continual process to create vibrant, innovative, and sustainable communities.



IMMORTAL Singapore

Rochester Commons

Rochester Commons is a new iconic campus-style development that promises to reshape the future of office spaces. [Singapore](#)

Principal Lead and Team Member:
 Stanley Tan and Gary Soh *Brand Engagement*



Rochester Commons in Singapore's One-north is set to become a unique integrated campus-style development set on 2.4 hectares of lushly landscaped grounds. Located between two business hubs, the development is home to a hotel, 12 black-and-white heritage bungalows, a 'Grade A' office tower, and Catapult, Southeast Asia's first shared executive learning centre designed to train future leaders.

The IMMORTAL team was engaged to devise a wayfinding and signage strategy for Rochester Commons to create seamless connectivity between buildings and amenities. The brief called for a system that is bold, clear, fresh, and creative. A challenge was to find a way to connect the pre-existing heritage bungalows with the new office tower melding them with the same brand identity.

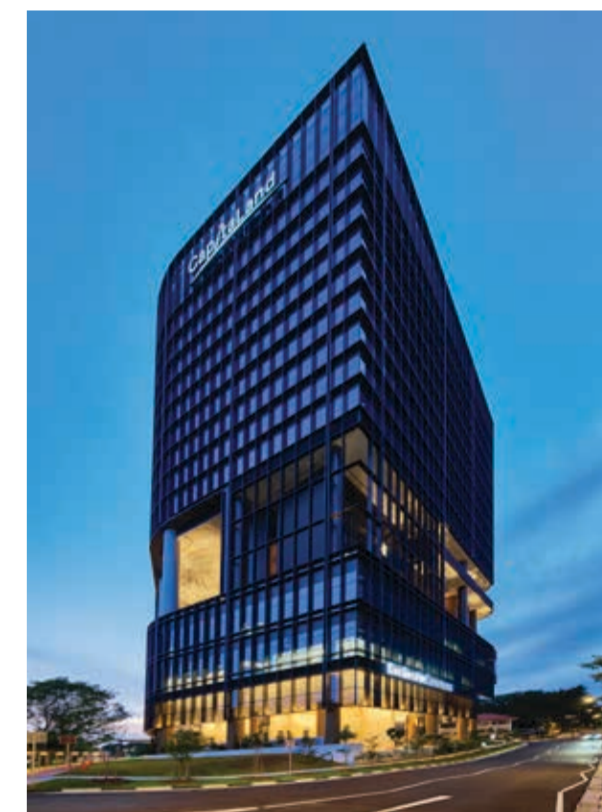
The IMMORTAL team developed designs that are distinct to each zone yet mindful of the overall intention of Rochester Commons. In addition, the team also assisted with other signage design to ensure a cohesive community experience across the development. The wayfinding solution employs a unified brand colour palette and iconography, to direct users around the vicinity.



Designed by Gensler + DCA Architects, the expansive grounds feature multiple zoned levels, with new streetscape and landscaped zones, in addition to a new knowledge trail that features viewing decks, pavilions and meeting pods, and the retention of the conserved bungalows and original roads and pathways.

To give it a distinguishable quality and as a sharp architectural contrast from the towering building, the entrance to the huddle of black-and-white bungalows is marked by a landmark pylon that is eye-catching and creates an exciting fusion of new and old. The individual bungalows have their own numbering style designed by the team while the tower has façade signage for ease of identification.

Rochester Commons captures the imagination with its bespoke opportunities for new and expanding businesses, exciting amenities for tenants and communities, and fresh experiences for anyone excited about the future.



Social Media Platform Office Expansion

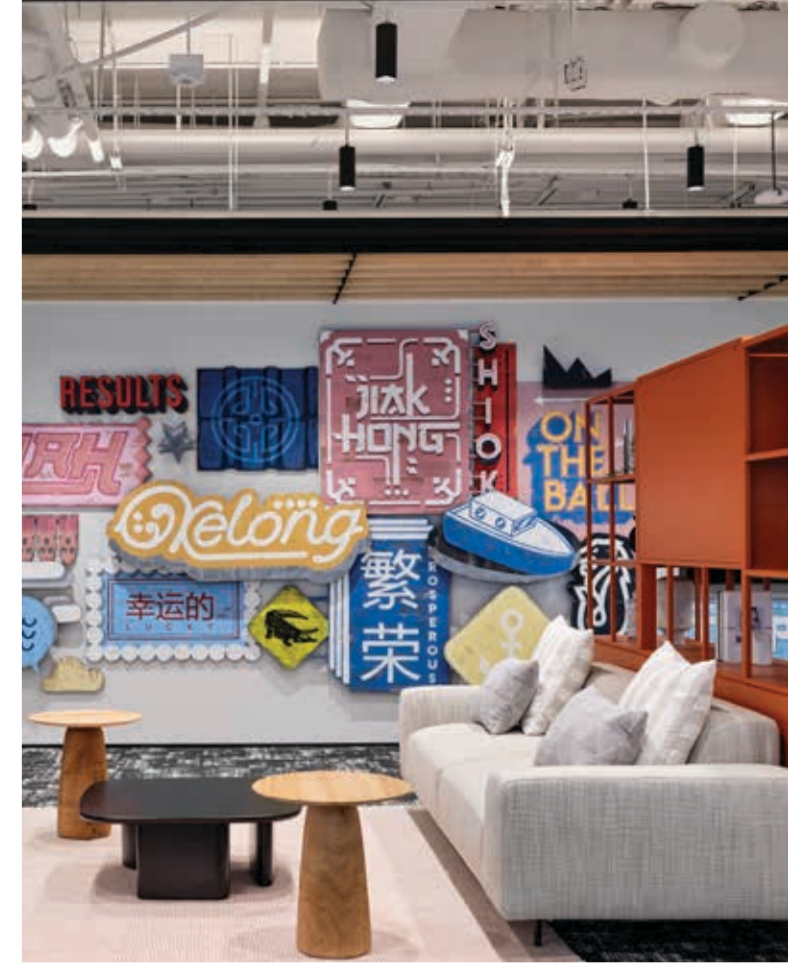
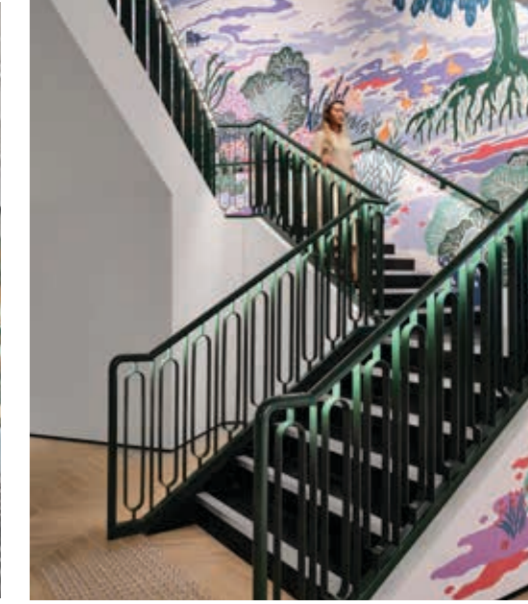
This redesigned office space promotes productivity as well as moments of relaxation and socialization.

Principal Lead and Team Member:
Elli Wang and Ng Suang Wei *Workplace Interior*

Chosen for its strategic location, the Singapore office serves as the Asia-Pacific headquarters, acting as a link for the company's strategic partnerships, member engagement, and sales and marketing.

SCA Design was engaged to design the office expansion located at the Central Business District of Singapore. Inspired by the vibrancy and communality of the district, the design aims to "bring the outside in" – a refined translation of the culture of alfresco and outdoor squares where meaningful interactions take place. This aspiration is reflected in the key communal areas at the expanded premises such as the Micro Kitchen and the Campfire.

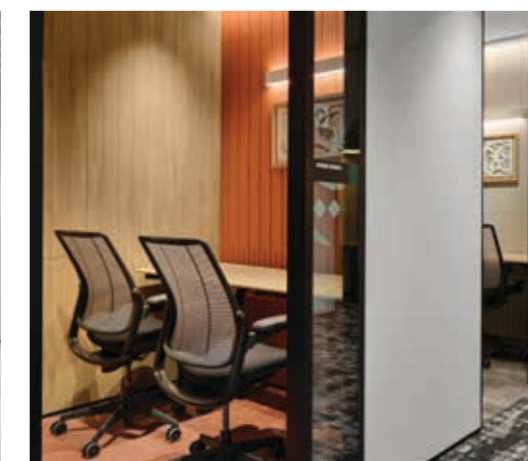
SCA studied the different levels of the existing office and designed suitable spatial narratives. The existing floor is reminiscent of colonial times, with the spaces sporting black and white tones and rattan



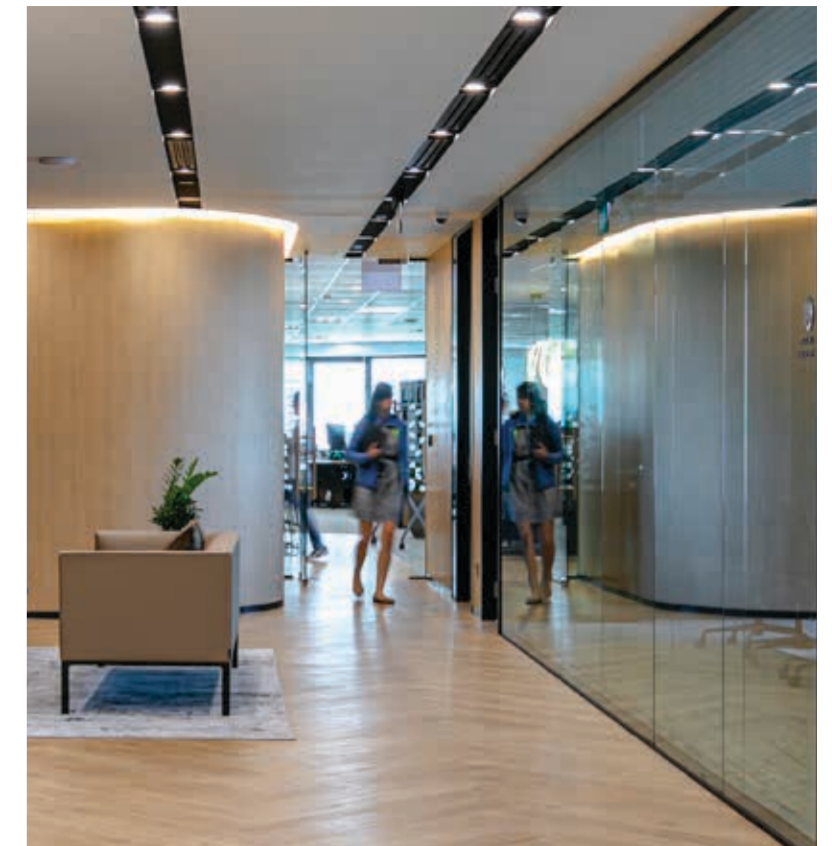
finishes. The rooms on this level are named after spices as the spice trade was a primary activity during that era.

The designers continued this narrative with the concept of a "Humble Heartland" on the new premises, built around Singapore's distinctive public housing, hawkker centres, outdoor spaces, playgrounds, and so on. In a similar manner, the "neighbourhood" comprises the essentials for living – a micro kitchen, open plan workstations, team hub, and both enclosed and open collaboration areas. The team designed the space as a representation of contemporary, 21st century Singapore with architectural landmarks depicted in commissioned artwork, and iconic bridges used as room names.

In achieving the design intent, focus was placed on the selection of materials to accurately underscore a local flavour. Adopting "outdoor" materials and incorporating biophilic elements are some of the strategies employed in the design process. Besides materiality, the design language of the surrounding architecture as influenced by a culture or era, is also subtly translated through shapes, colours and patterns, evoking familiarity for the Singapore context.



Social Media Platform



SCA Singapore

Global Investment Firm

Global Investment

Nature heavily influenced the interior design of this office. The result is a classy and elegant space that cleverly infuses biophilic elements into a modern setting. **Singapore**

Principal Leads and Team Members:
Kee Choon Yen, Norman Chan, Ho Kok Yuen and Albert Chin *Workplace Interior*

Located between the Singapore River, Marina Bay, and Chinatown is the Central Business District, which buzzes with all manner of commercial and financial activities. Set against the backdrop of Singapore's picturesque skyline, the CBD is home to some of the most prestigious companies. Amongst them is a global investment firm that – recently shifted out from its co-working space – had engaged SCA Design to furnish its interior.

This rapidly growing investment company wanted a welcoming contemporary space that would reflect its core values. As soon as one steps into the space, one cannot help but notice how harmony is beautifully achieved with various shades of brown. The herringbone flooring and walls in a lighter brown are highlighted by the contrasting brand wall in a granite-like mocha brown stone texture paint. There are two waiting areas, one with chairs in caramel while the other contains furniture in mostly neutral tones.

Minimalist in its appearance, the space exudes a hushed elegance and class. Adjacent to the waiting area on the left is a meeting room. With large windows bringing in sunlight and framing a view of the Marina Bay Sands, the meeting room uses a palette of warm and earthy tones. With all their

meeting rooms encased in glass, Casper Cloaking Technology ensures privacy so those walking by the meeting room would not be able to make out the contents display onscreen. This technology comprises an architectural film for glass walls that obscures digital screens. It acts as a smart shield to ensure data privacy while providing peace of mind to collaborate freely in any working environment. The same elegance continues further into the office, augmented with natural lighting and pops of colour from the greenery. The floorplan is balanced between enabling focused, activity-based work and providing collaboration areas. Lounge spaces promote productivity but also encourage moments of relaxation and socialization.

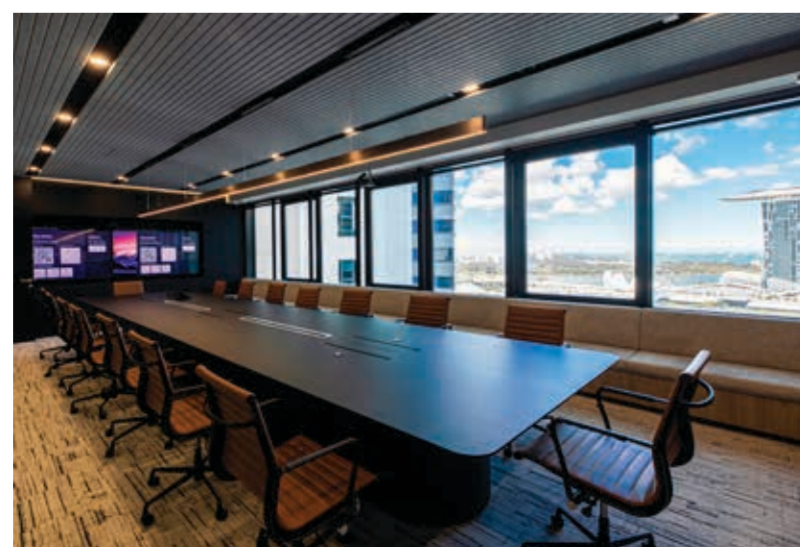
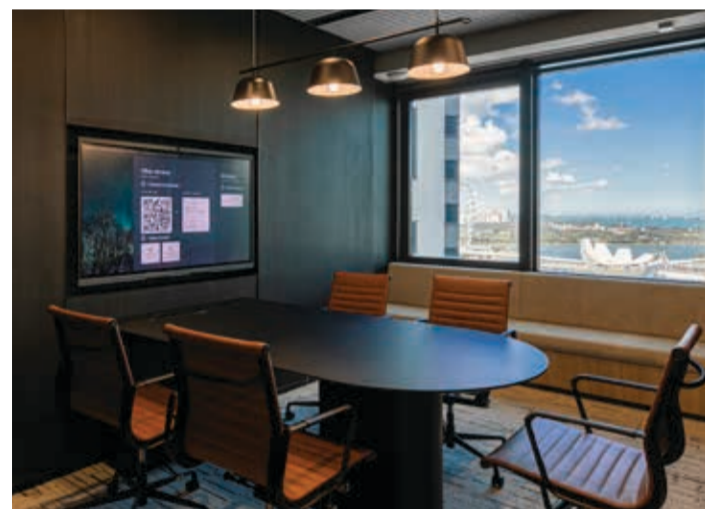
Workstations feature ergonomic tables that are height adjustable. Each workstation includes pockets of greenery to rest tired eyes while at the lounge area, a planter box is home to herbs and vegetables, which are harvested and distributed to the team weekly.

The pantry area is done up in black, which sets it apart from the rest of the office. A fluted island and worktop base adds a pretty touch to an otherwise minimalist space. The countertop in white provides a striking contrast. Apart from the

bar stools, a diner-style bench in dark green and tables in onyx complete the furnishings. A unique light fixture resembles a snake curled up on a branch, while a feature wall showcases different types of birds in another homage to nature.

Other elements that make up this office space spanning over 5,500 sq. ft. are phone booths that provide employees a private space to work or have a conversation in, meeting rooms catered for small or medium groups, as well as small rooms with single glaze glass for discussions amongst teammates.

This new office reflects the firm's brand positioning and business approach while exuding a welcoming vibe.





SCA Singapore

Media Conglomerate

In keeping up with the changing times, SCA Design has successfully conceptualised this office to reflect vibrancy and professionalism - but with a twist. **Singapore**

Principal Leads and Team Members:

Elli Wang, Wafi Afandi, Yip Jia Chang, Michael Gong and Muhsin Ithnain *Workplace Interior*

Located in ALICE@Mediapolis in One-north, this conglomerate's office in Singapore is in a vibrant environment where dreamers, thinkers, and makers meet and collaborate. Sited in a first privately developed, green and smart, multi-tenanted business park and office space in Mediapolis, it is only justifiable that the interior design of this office too redefines the working space.

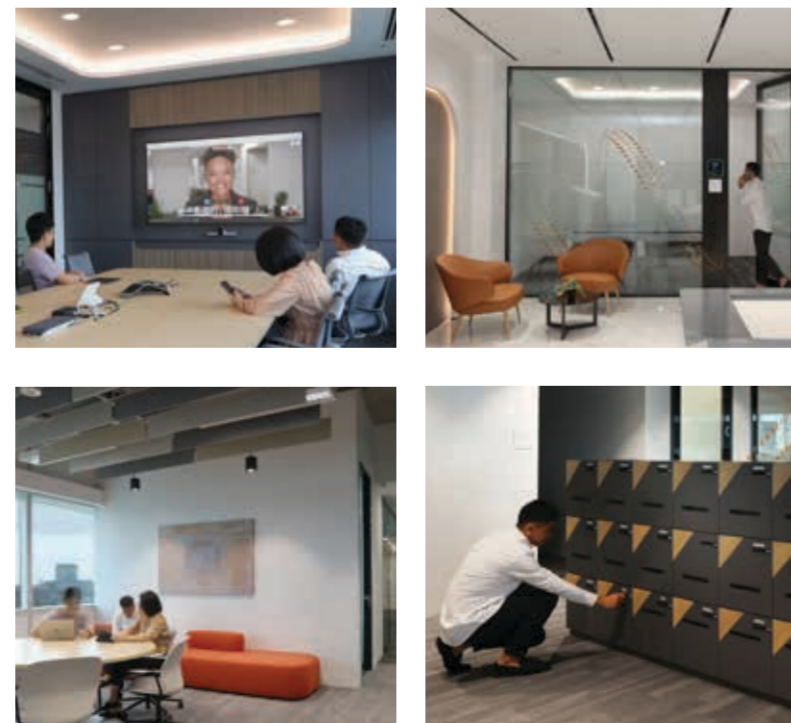
The design brief for this workspace was to have features with dynamic linear and curve design elements to create a compelling visual experience and the team rose to the occasion. They designed a space that resonates with the working styles of the staff, encouraging more collaboration, while increasing efficiency, productivity, and flexibility.

The design concept projects a professional image that is sleek and bright with an elemental colour palette that is reflective of the brand identity. Further in, towards the main atrium, each area sports its own

characteristics. In the boardroom, a full-height video conferencing cabinet, with design features that draw the user's attention to this area of the room – is the focus point. An immersive zone for MCR with a darker colour scheme and acoustic ceiling design, helps employees focus on their tasks.

The most vibrant area in this office is the pantry. Designed to be an area for team members or clients to take a break, meet and collaborate, it is truly a refreshing space. With a green wall on one end, and vibrant furniture making a break with the white space, the pantry promises to be a fun zone for people to interact or wind down. There are diverse seating designs to satisfy a range of needs.

This office is a perfect example of a how a future workspace should look and function, which is empowering employees to choose where, when, and how they want to work within an office space.



SCA Singapore

Media Research Agency

Relating to the way colleagues typically communicate with one another, this space is attuned to evolving workplace needs and the post-pandemic hybrid approach. **Singapore**

Principal Lead

Kee Choon Yen *Workplace Interior*



a largely neutral colour scheme with pops of colour to add character, the demarcation of space is marked by layout and aesthetics and in accordance with functions and requirements.

Taking on a minimalistic approach, this office in Raffles Place, Singapore, means business. As a global leader in audience measurement and shaping the future of media, this workplace is intended to be diverse and inclusive while allowing its employees to work in a free and independent manner.

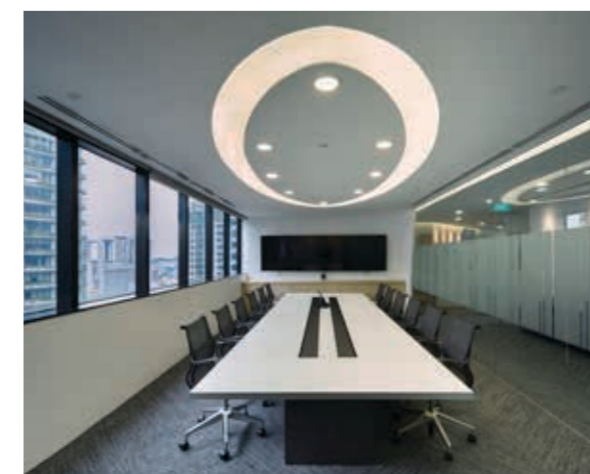
The team at SCA were engaged to bring this vision to life. At a glance, this office space is meant to be both agile and technologically progressive, providing an ideal base for all its business functions. Adopting

From the get-go, the team at SCA conveyed inclusivity via the design, which is efficient, subtle, and effective in creating a welcoming environment without putting undue focus on the needs of any group. They delivered a calm, upbeat, innovative, and productive workplace. Diversity is illustrated in the bold colours of the room elements. Other ways they have adapted this theme is through the use of moveable furniture, soft materials, and unique shapes.

Creating a balance between open and closed workspaces, SCA designed a significant number of huddle rooms – flanked by open work area – to establish clear separation within the space itself. Certain areas are more communicative while others are more private to create a workspace that is not monotonous and encourages creativity and interaction.

In the collaboration zone, the team adopted mobile bench seating to employees' need for collaboration and brainstorming spaces and to fulfil the ideology of multi-functional space such as for townhalls, mini seminars, or even for team discussions. This allows staff to shift to a more agile work mode in line with the design of the future. Phone booths allow employees the privacy they need for personal calls or interactions that require a quieter environment.

At the pantry, a joyful mood is created through the use of a colourful, retro backdrop that serves as a contrast to an otherwise neutral-looking space. This media research agency's new workspace is vibrant and engaging, satisfying the ever-changing needs of both seasoned and new employees.



Unveiling the future workplace



In the blink of an eye, everything can change. The only way to stay ahead is to anticipate change and prepare for it. It is no different in the workplace. 20 years ago, offices were made up of cubicles and attempted to accommodate as many employees as possible in one space. Fast forward to the present and the modern workplace is very different. Employers now realise that a creative space boosts morale and increases productivity. Understanding this change has enabled SCA Design to stand the test of time.

To resonate with current trends and to commemorate its 20th year, SCA Design underwent a rebranding exercise for a more engaging approach. A seasoned player in the workplace design industry, SCA Design is nonetheless a vibrant, trendy, and young firm that walks the talk of change and embodies transformation. The new brand encapsulates a promise to go beyond just delivering good designs. SCA embraces the endless variations of workplace behaviour and takes on the challenge of making offices a desirable destination for employees, post-pandemic.

In creating the workplace of tomorrow, SCA helps clients create spaces that enable diversity, uplift human connectivity, and align their thinking with the demands of evolving workplace needs.

Visit www.sca-design.com to understand how SCA is reimagining the workspace to be more fluid and flexible than ever, integrating in-person needs with the possibilities of the 'phygital' realm.

We Engineer Behaviour Through Design



Engineering

Rankine&Hill Singapore

Grantral Complex

To complete a desirable experience at the Grantral Complex, Rankine&Hill created a sense of quality and comfort throughout the space with M&E solutions. **Singapore**

Principal Leads and Team Members:
Shahrom Mohamed Ariff, Teh Yong Hui, Thu Hein and Jackson Lee
M&E Engineering

The Tai Seng area, serviced by Tai Seng MRT Station, has seen an increase in the number of office and industrial premises in the vicinity, with many companies moving their offices to the district. Joining this line up is Grantral Complex.

Located at 601 MacPherson Road, Grantral Complex comprises of two components: Grantral Mall and Grantral Complex. The former is made up of retail shops while industrial buildings occupy the complex. To complete this project, the management engaged Rankine&Hill for their comprehensive M&E expertise. When it comes to M&E works, a clever design is one that has been thoughtfully designed so that mechanical services such as ventilation and cooling can go unnoticed.

In any context, when M&E works are well designed, they are resource-efficient, easy to control and maintain, adaptable and planned with wellness in mind. To ensure this building met the client's requirements and aspirations, the Rankine&Hill team had to ensure their systems struck a balance between commercial performance, usability, comfort, health and wellness, and sustainability.

One challenge the team faced was extensive coordination through regularly working with other project teams. Taking three years to complete the works, Rankine&Hill went beyond standard mechanical engineering solutions to exceed the client's expectations. It obtained TOP in 2022.



Rankine&Hill Singapore

INSPACE

A fresh makeover to this 8-storey factory building redefines the workplace and caters to a new wave of employees in need of spaces that inspire. **Singapore**

Principal Leads and Team Members:
Shahrom Mohamed Ariff, Teh Yong Hui, Chin Yee Woei and Jackson Lee
M&E Engineering

Rankine&Hill worked with the client to create a building that met their requirements and balanced commercial performance with usability, health and wellness, comfort and sustainability. The team provided simple and elegant solutions that enhanced the long-term value of INSPACE, which aims to be a new-age factory which enhances the wellbeing of its tenants.

There are courtyards that provide a spot for tenants to recharge and reconnect with friends and colleagues. Those looking to de-stress after a long day can head to the outdoor fitness area or the swimming pool. As a break from screen time, they can appreciate the thoughtfully crafted landscaping and architecturally customised rooftop courtyard.



INSPACE is a freehold development comprising of an 8-storey factory building with 84 units. Jointly developed by SLB Developments and Oxley Holdings, INSPACE caters for a new wave of businesses. Its modern, timeless architecture augments the spaciousness within the units.

For this project located at New Industrial Road, Rankine&Hill was engaged for the A&A as well as upgrading works to the factory building and other ancillary facilities that come with sky terraces from the second to the fifth floor, as well as a swimming pool and communal facilities at the eighth storey.



Rankine&Hill Singapore

Parc Esta

Occupying a broad swathe of land right beside Eunos MRT Station, Parc Esta is the new residential landmark in the East that is designed for sophisticated urban living. **Singapore**

Principal Leads and Team Members:
Tan Peck Khoo, Shahrom Mohamed Ariff, Teh Yong Hui, Feng Wei Vivian and Gan Quan
M&E Engineering

Parc Esta is a premium residential development sitting on a 3.5-hectare estate. Located on the desirable city-fringes of Singapore's East Region, the property is pegged as a new landmark for the area.

Perched on a sweeping estate, Parc Esta is the new residential landmark in the East. Designed for sophisticated urban living, the towers are spaced generously apart from one another to give residents a heightened sense of privacy and seclusion. Featuring stunning full-height glass façades, this architectural fascination frames the setting for 1,399 luxurious homes in a modern sanctuary of refined living.

Much of Parc Esta's sprawling estate is dedicated to bringing together three sumptuous realms in one idyllic residence. Each one is full of distinct character, creating interconnected worlds that deliver transformative experiences. The sensory treat begins as one is welcomed by the soothing ambience of calm waters lined with custom-made lights at the Lantern Isle.

Then drive up to a grand foyer and be greeted by a stately arrival hall with its expansive Signature Arrival Court. As one ascends the elegant stone steps, be captivated by the serenity of a picturesque atrium. At the heart of Grand Parc is the Majestic Tree Atrium, which lends a picturesque setting to the enchanting Reflective Pond close by, cradling the Sunken Party Lounge.

Elegance and grandeur are hallmarks from the moment of arrival. The modernist 18-storey towers are each crowned with a striking lantern-inspired feature. Come nightfall, they light up and transform into shimmering jewels, adding unique character to the skyline.





PROJECTS
St. Joseph's Church

The present St. Joseph's Church building dates from 1912 and was gazetted as a National Monument of Singapore in 2005. By 2017, the church was in dire need of thorough restoration and ONG&ONG was appointed to manage the mammoth project, which saw experts from as far afield as Europe flown in and consulted on the conservation of important features and artifacts. Its roof trusses were set straight, restored or replaced. The sagging cantilevered choir loft was replaced with one that is under-girded by a steel frame. Crucial structural works were carried out to secure the building and its walls were re-plastered and re-barred. All in, the restoration took five years, and the result was well worth the wait.



NEWS
Celebrating ONG&ONG's 50 Years of Excellence

2022 heralds ONG&ONG Group turning 50 - definitely a milestone to commemorate! To celebrate the half-century mark, the Group has launched a video on a dedicated site.

The website features everything you need to know about the Group, taking stock of what it has accomplished and giving a glimpse of what the future holds.



NEWS
BeyondX: A Recap

Themed, A Dialogue about the Experience in the 'Phygital' Universe, BeyondX is an annual event that hopes to lead the discourse in the alternate verses such as metaverse, omniverse and how it would impact the design and built industry and by large how every industry is connected. This year, the two-day event held on 27 and 28 July 2022 was a success as there were round table discussions and showcases that covered the creative, innovative, and immersive elements, which would help in the quest of architecting the digital realm. If you missed this year's BeyondX, catch some exciting moments during the BeyondX.

EASY AS ONE TWO THREE



Parc Esta, Singapore



Novena Church, Singapore



- Mechanical**
 - Electrical**
 - Civil**
 - Structural**
 - Fire Safety**
 - Environmental**
- rankine-hill.com

ENGINEERING SPECIALISTS

At Rankine&Hill, innovation means leveraging technology and our collective ideas to turn imagination into reality. Straddling the balance between the practical and imaginative, we research design ideas and approaches, then apply them to attain novel solutions. With decades of experience in the industry, our engineers continue to deliver a full range of engineering solutions that leads to client satisfaction.



INSIGHTS
Embracing Asian culture and its rich diversity

Asian culture was exported across the globe as far back as the 17th century. Far more recently, in the 1990s, Japanese anime gained massive global viewership through shows like Dragon Ball and Sailor Moon. These days, we see different aspects of Asian culture celebrated worldwide - from yoga and K-pop to the explosive flavours of Southeast Asian cuisine. These bring a freshness to the table. Unsurprisingly, the growing popularity of Asian culture coincides with increased access to social media and its global reach. Today's digital world is crucial in breaking down physical and cultural barriers. Beyond building awareness, companies can take advantage of this interest to foster sustained relationships in new markets.

EVERYTHING EVERYWHERE ALL ON US



Curtin Singapore, Singapore



BBR by Alain Ducasse, Singapore



Lotte Duty Free, Changi Airport, Singapore



- Project Management**
- Project Development**
- Construction Management**
- Cost Management**
- Place Management**

proj-innovations.com



- Construction**
- Design & Build**
- Turn Key Solutions**
- Contract Works**

proj-xion.com

PROJECT MANAGEMENT SPECIALISTS

Big advocates of thorough planning, clear communications, and drawing upon the best collective synergies, the Project Management and Project Solutions teams work hand-in-hand with clients to solve problems, deliver solutions, and drive results.

We integrate design and management skills in order to realise thoughtful solutions and see every project through from start to finish.

NEWS
ONG&ONG Group Wins SG Mark Awards

SCA Design and IMMORTAL Singapore (members of the ONG&ONG Group) were awarded at the Singapore Good Design Awards ceremony on 25 Aug 2022. The Dementia-friendly Wayfinding Project by IMMORTAL received the SG Mark Special Mention Award under the Experience Design category while TCube by SCA and IMMORTAL won under the Interior Design Category. The SG Mark Award acknowledges and affirms that the ONG&ONG Group has generated significant value through the introduction of 360 Solution, which is a holistic proposition for a seamless project realisation, that focuses on human needs and experience and enriches lives responsibly.



INSIGHTS
ONG&ONG Group Member Websites Get a Revamp

Constantly and consistently improving its offerings to enhance user experience, the websites of ONG&ONG, Rankine&Hill, Project X:ion, and Project Innovations have gone through a revamp to present a spanking new look. Apart from offering a better experience, the newly improved websites are easy to use, easy to understand, and easy to navigate.



NEWS
Leadership Driving Change for Efficiency

Recently, BuildSG magazine featured ONG&ONG Group for its efficiency in driving change and being a trendsetter in workplace transformation. During its annual Management Retreat, Ong Tze Boon, the Group Executive Chairman and other directors nailed down a holistic digital transformation approach called "Digital Beyond". Aiming to revolutionise the company's digital strategy in three areas, or the "3 W's": Workplace, Workflow, and Workforce. Guided by this blueprint and a determined leadership team, the firm has weathered the Covid-19 pandemic with confidence and strengthened its position as a regional powerhouse in the BE sector.



NEWS IMMORTAL's Dementia-friendly Wayfinding Project featured in The Straits Times Interactive

More people are banding together to build dementia-friendly facilities and support systems in Singapore. Khatib Central in Nee Soon by IMMORTAL was featured by The Straits Times Interactive. It is also one of Singapore's first dementia-friendly estates. For Khatib Central, the wayfinding team at IMMORTAL had demarcated the buildings into three zones using primary colours that can be easily distinguished. Large directional signages that are also colour-coded help users to navigate the area better. The pilot dementia-friendly neighbourhood is an incredible step towards inclusivity.



PROJECTS IMMORTAL Adds Another Feather with Rochester Commons

Strategically located in the One-north district, the soon-to-be-opened Rochester Commons is a 17-storey mixed-use tower comprising a shared Executive Learning Centre, a 135-room upscale Hotel, Office, a sky garden, and amenities deck. With so many amenities and facilities available, IMMORTAL was engaged to devise wayfinding to allow connectivity and ease of movement. The myriad interweaving of learn-work-play spaces at Rochester Commons fosters a new kind of environment for knowledge seekers and providers to meet, bond, connect, and socialise in a vibrant and immersive setting.



PROJECTS Lotte DFS Opens More Stores

South Korean duty-free retailer, Lotte, which replaced the DFS Group as the Liquor and Tobacco concessionaire at Changi Airport, marks the first time a new operator has helmed this position since 1981. To aid in this daunting transformation, Project Innovations, a member of ONG&ONG Group, was appointed by Lotte Travel Retail. The project management scope includes 20 stores in Changi Airport with a total retail space of 8,522sqm. At present, more than half of the shops – including one pop-up unit – are currently operational across all four terminals, with the remaining shops slated to open in 2023.

ENGAGE THE FUTURE IMMORTAL Brand Engagement M Social, Millennium Hotels & Resorts Evolving a refreshed proposition for a progressive hospitality brand. WHAT'S IN A BRAND? Market Insight Brand Audit Brand Strategy Brand Expression Brand Management Environmental Branding Digital Branding Solutions A thoughtful, purposeful strategy is the foundation of every great brand as the experiences brands create become the perceptions customers hold. At IMMORTAL, we treat our client's brand as our own. From building your brand identity to defining your value proposition, we help brands zero in on their audience. IMMORTAL's branding programmes have helped many clients across Asia achieve success. immortal.com.sg



NEWS Hosting the URA team at Sloane Residences

Singapore's Urban Redevelopment Authority – the agency that helps formulate strategic plans to guide the physical development of Singapore in a sustainable manner – recently visited Sloane Residences to see how the design approach has translated as a completed development. Featuring an unorthodox design, a vertical tower features greenery through a tapestry of gardens, landscaped plazas, and verandas, while a horizontal low-rise block helps to define and enclose a linear and open-to-sky space on the ground floor that pays homage to the site's statement long driveway.



INSIGHTS Asian Brands Take on the World

As Asian brands continue to grow and globalize, they must navigate their way around staying true to their roots while also connecting with previously uncharted markets. Many brands across platforms have started showcasing their Asian roots be it in its design philosophy, company values, or even brand communications. Representation is crucial in conveying Asian values to a non-Asian audience. As East and West converge on the global stage, exciting times lie ahead as they enrich and learn from each other, creating fresh synergies.

THE ART OF NAVIGATION Rochester Commons, Singapore Planning and Analysis Wayfinding Strategy Signage System and Design Environmental Graphics Placemaking The staple for every development, to ensure all who wander are not lost. Creating welcoming environments start with designing cohesive, consistent wayfinding programs that take into consideration all the ways that visitors interact with the built environment. Whether through visual landmarks, supergraphics, or digital signage, the team at IMMORTAL helps clients to create a seamless user experience and spatial connectivity that feels intuitive and true to brand. immortal.com.sg



PROJECTS Curtin Singapore

Curtin Singapore has moved to The Alpha in the Singapore Science Park. To help the university community feel right at home at their new address, the 360 Solution by ONG&ONG Group was applied. In this particular project, interior design, C&S Engineering, project management, and brand engagement were involved. Applying nuances that connects the Singapore campus to its parent campus in Western Australia (WA), interior design, placemaking, and wayfinding play important roles to provide undergraduates a better user experience.



INSIGHTS Rankine&Hill Engineering Excellence at Parc Esta

Parc Esta was designed to cater to the demands of the busy urbanite. Committed to developing a sizeable estate of refined indulgences for residents, MCL Land engaged Rankine&Hill as the M&E consultant. The new residential landmark comprises 1,399 residential units over 9 18-storey blocks, and 5 commercial shop units.

INSIGHTS Mitigating Sea Level Rise

Global sea levels are rising because of human-caused global warming and climate change. The rising water level is mostly due to a combination of melt water from glaciers and ice sheets and thermal expansion of seawater as it warms. Rising sea levels puts coastal cities around the world at risk of becoming inundated. In this article, we take a look at how various cities are mitigating the rise of sea levels with a range of clever ways.



PROJECTS Paya Lebar Chinese Methodist Church Refurbished

Built in 1964, the Paya Lebar Chinese Methodist Church recently underwent A&A works. For this project, ONG&ONG and Rankine&Hill were engaged to breathe new life into the space. Among the key concerns that the team addressed were the modest existing sanctuary halls, limited rooms, and lack of parking spaces. The A&A involved the retention of the existing sanctuary halls with new extensions to their fronts and backs, and a new basement as well as a landscaping exercise to spruce up the appearance of the church to reflect a modern biblical garden.

INTERIOR

INSIGHTS FOR INSIDE

INTERIOR DESIGN SPECIALISTS

Adding a degree of difference to any space, interior designing is about shaping moments that change people for the better. From residential and commercial to public or private space, interior designing helps transform these into spaces of inspiration and belonging.

ong-ong.com

- Advisory & Consultancy
- Feasibility Study
- Master Design Guidebook
- Space Planning
- Test Fit
- Turn Key Solutions

Oakwood Residence Hanoi, Vietnam

New Tech Park, Singapore



INSIGHTS Reducing Our Carbon Footprint

The built environment is responsible for 39% of all global carbon emissions, far higher than any other single sector. Each stage of the construction process leaves a massive carbon footprint; the AEC industry requires strategies at each phase to decarbonise. Implementation schemes for design ideas, material choice and energy consumption will help drive a more sustainable future. Design methodologies such as building orientation, solar-passive design, and flexibility should be implemented.

NEWS

Ringing in the Rabbit

After three long years, the ONG&ONG team were ecstatic to be celebrating the Lunar New Year at the office together. As we gradually return to normalcy, the Singapore and Malaysia offices hosted Chinese New Year celebrations for their team. Colleagues came together to toss the lohei, looking to more unity and prosperity in the Year of the Rabbit. In Singapore, the luncheon started off with a Lion Dance performance and ended with a lucky draw. As our offices ring with laughter and chatter, we wish everyone a prosperous new year.



PROJECTS The Jovell Unveiled

Located just 10 minutes away from Jewel Changi Airport is Flora Drive, where The Jovell is located. ONG&ONG was engaged for their architecture and landscape prowess for this development based on a resort theme. The site, comprising of nine residential blocks, unfolds with an extraordinary waterscape and lush tropical gardens that are just some of the features of the development.



INSIGHTS Be Your Own Boss

While the solopreneur concept is not new, fresh interest arose during the pandemic, when there was an increase in the number of side hustles where individuals would utilise their skills to generate additional income during the lockdowns. Some started selling homemade food and beverage items, while others experimented with selling products and services online. Now, solopreneurship remains on the rise but why? To understand the appeal of becoming a solopreneur, one must first look at the reasons for the rise of this trend.



INSIGHTS Designing Safer Cities for Pedestrians

Walking is the oldest form of transportation, and it is crucial that pedestrians not be side-lined in city design. Cities can encourage people to walk by developing pedestrian networks that serve as viable alternatives to the use of private vehicles, are appealing, and safe. These walking networks should link city centres, residential areas, business zones, and more. While vehicular traffic holds prominence, pedestrianising a town or city can effectively improve the quality of life for its inhabitants.



PROJECTS Refitting Wesley Methodist Church to the Tune of 2023

The refurbishment of Wesley Hall, located within the premises of the historic Wesley Methodist Church in Singapore saw the ONG&ONG team shifting the orientation of the stage, granting audiences from both sides of the hall a better view. Also reflecting the demands of a younger audience, Wesley Hall is equipped with a fully automated lighting system and mist-making machine, evoking a concert experience for all worshippers. The refurbished church provides a timeless, stabilising effect on fast-paced modern life.



PROJECTS Designing the Garden-inspired Sloane Residences

Sloane Residences features a distinctive hybrid design comprising a vertical tower massing (Skyscraper) which interlocks with a horizontal podium (Groundscraper). The former is designed to house three- and four- bedroom units while the Groundscraper houses a unique collection of two-bedroom Garden Suites. The garden-inspired development brings residents close to nature with 6m-high curtain walls at the lower floors that provide breath-taking, unobstructed views to the outdoors.

WORKPLACES THAT WORK

WORKPLACE INTERIOR SPECIALISTS

Keeping users in mind, SCA designs people-centric environments that enrich the human experience, evoke wellness, and integrate technology with new ways of working. Bringing the best ideas and solutions to the table, spaces by SCA will meet your workplace needs both today and tomorrow.

sca-design.com



- Building Studies
- Workplace Studies
- Space Planning
- Interior Design
- Project Management
- Sustainability
- Turn Key Solutions



Tcube, Singapore



Taipei Fubon Bank Vietnam, Vietnam



NEWS SCA Sharing Insights for a Successful Workspace

SCA, a veteran in designing workplaces had recently undergone a rebranding exercise to reflect its brand belief in delivering beyond good designs.

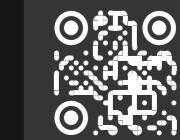
To commemorate the occasion, it organised a workshop where they shared insights on building future-ready workplaces and the transformation of office furniture to complement new work trends. Read the Whitepaper for their insights

SCA Looking Super Cool

Walking the talk of change and embodying transformation, SCA had recently undergone a rebranding exercise and has come out looking a lot swankier, and younger. SCA - a veteran with 20 years of experience in designing workspace - remains youthful and true to its brand belief in delivering beyond good designs. As a Super Cool Agency, SCA is serious about building future-ready workspace by embracing the endless variations of workplace attitude and amplifying employees performance at work by engineering behaviour through design



Check out the new website look and follow them on social media for latest update.





PROJECTS **Jadescape, A Natural Elegance**

Jadescape, a residential development of seven 20-storey residential towers, draws inspiration from the nearby MacRitchie Reservoir, and is envisioned as an extension of nature. The arrangement of the residential towers, sited in verdant landscaping, ensures breathtaking views from every aspect. Drawing upon oriental aesthetics, Jadescape's timber-like cladding, frames and lattice screens define the buildings' façades. The edge profiles of each building were made identical in height for iteration, providing added visual definition.



PROJECTS **Rankine&Hill Complete M&E Engineering System for Grantral Mall MacPherson**

Grantral Complex and Mall @ MacPherson is a mixed retail and industrial development within the Tai Seng/Upper Paya Lebar area. Grantral Mall comprises retails shops while Grantral Complex consists of industrial lots. For this project, the Rankine&Hill team were roped in for the addition and alteration works to the existing multi-user eight-storey light industrial building. With the completion of the Asset Enhancement Initiative, this building will become a new destination for the working community and the neighbourhood nearby.



PROJECTS **INSpace – Another Feather in the Rankine&Hill Cap**

INSpace, a freehold development by Lian Beng and Oxley Holdings, comprises of one eight-storey factory building with 84 units. Designed to cater for new age businesses, INSpace boasts modern, timeless architecture that plays on the spaciousness every unit has to offer. For this project, Rankine&Hill were engaged to provide M&E Engineering consultancy to the building that comes with its own sky terraces, swimming pool and other communal facilities.



NEWS **Lifestyle III of the Anthology Series is Out Now**

Lifestyle is all about how we live and is strongly connected to our sense of happiness and peace. As we witness a paradigm shift towards striking a better balance between work and life, more people are choosing what brings them joy. ONG&ONG is thrilled to announce that Lifestyle III of our Anthology series is now available. Our team has curated the best lifestyle experiences within its pages, and we hope you find it an entertaining read.



Heartbeat@Bedok, Singapore

LANDSCAPING

TOPS FOR TOPOGRAPHY

LANDSCAPE SPECIALISTS

Our work is about creating built environments which help people ground themselves in their immediate environment and creating dynamic and adaptive landscapes of the future. Through diverse forms of landscape architecture, we enable positive change in communities and reconnect neighbourhood infrastructure and habitats for generations to come.

ong-ong.com

- Masterplanning
- Space Planning
- Blue & Green Solutions
- Sustainability
- Playground Design



State Courts of Singapore, Singapore

LIGHTING

LIGHT FOR LIFE

LIGHTING SPECIALISTS

An often-overlooked element in architecture is lighting. Without it, we'd all be in the dark! How we view the environment is crucially augmented by lighting, which brings into focus the textures, colours and forms of a space.

Our lighting specialists curate experiences for every project that enhances the architecture.

ong-ong.com

- Architectural Lighting
- Equipment Cost Control
- Operational Cost Control
- Lux Level Calculations
- Lighting Controls
- Lighting Audits



PROJECTS **IMMORTAL Devises a Wayfinding Strategy**

Rochester Commons in Singapore's One-North district is a first-of-its-kind integrated campus-style development. For this mixed development, the IMMORTAL team was engaged to design a wayfinding strategy that would create seamless connectivity between buildings and spaces. One challenge faced by the team was to find a way to connect the pre-existing heritage bungalows with the new building, so they carry the same identity. Using wayfinding, the team created an approach which employs a unified brand colour palette and iconography to direct users around the vicinity.



NEWS **Putrajaya Line Phase 2 is Now Up and Running**

The long-awaited phase 2 of the Putrajaya MRT line opened to the public on 16 March and is expected to reduce traffic congestion on roads and highways leading to the city centre. ONG&ONG was tasked with executing the Line-wide elevated station blueprint for the design concept, detailed design as well as design implementation for the Putrajaya Line. Stretching a distance of 40.2 kilometres (km) from Kampung Batu to Putrajaya Sentral, the new line will also have interchange station services connecting it with the Kelana Jaya Light Rail Transit (LRT), Kajang MRT and KL Monorail.



INSIGHTS **The Signs of Immortality Striking the Right Lexicon for Longevity**

The history of logos is really the history of symbols: how humans have assembled simple lines and basic shapes, evolving them to communicate concepts and meaning. In modern times, icons have become a shorthand for various functions and are embedded in everyday encounters, from wayfinding and identification signage to the control panels of household appliances, to onscreen icons. The most successful symbols and logos have evolved to assume the appeal of talismans - they widely evoke sensations of comfort and assurance.



NEWS **Paul Tange of Tange Associates visits Jadescape**

JadeScape is an awe-inspiring new condominium designed with an Asian garden theme that references the beautiful MacRitchie Reservoir nearby was completed in 2022. ONG&ONG was also engaged to design the interior. Recently, Paul Tange, Head of Tange Associates, visited Jadescape while in town, accompanied by ONG&ONG Group CEO Ashvinkumar Kantilal.



NEWS **Vietnam Office Celebrates Women**

March 8 every year marks International Women's Day. ONG&ONG Vietnam embraced the occasion by celebrating the women in their office. The office was colourfully adorned while the women received rose bouquets to signify their strength, sensibility, and sensitivity. Themed #EmbraceEquity, this year's celebration is aimed at encouraging a gender equal world. A world that is diverse, equitable, and inclusive



ONG&ONG
group

NEWS
360

Chief Editor
Ashvinkumar Kandiah
Managing Editor
Stanley Tan
Creative Director
Stanley Tan
Contributors
Chiang Hui
Emeric Lau
K. Vatsala
Designers
Goh Lip Sen
Jimmy Fong
Ryan Lim
Printer
Demand Print
Solutions Pte Ltd.

Take a look around and you will realise that together with the progress of technology, big data pervades almost every aspect of our lives. According to Forbes.com, two-and-a-half quintillion bytes of data are created daily, and this quantity is set to rise with better internet access. With so much data being generated, big data is not only changing our lives on a day-to-day basis but also influencing the future.

But the challenge lies in figuring out the best way to process, analyse, and make useful insights from the information gathered and how we can use big data to improve the design and build industry. I believe the future of big data lies in three areas, mainly in real estate, retail, and climate and that people would be a big contributor.

Everything you do produces data. That photo you liked on social media or that meal you purchased by swiping your credit or debit card, or that unique tee you purchased online, or even that Google search you made for work – almost all our daily actions are bolstering the Internet of Things. And in the future, people will increasingly become data points in various ways. The movement converting various aspects of our lives into data has been on the rise for years and it is transforming how we live, work, and interact with one another.

In future, big data will also transform the way buildings are designed and built. With the increasing availability of data and new technologies, architects and designers will be able to collect and analyse data on how people interact with the built environment. This data can then be used to inform the design of buildings and other structures in ways that better meet the needs of people.

One way that people may become data points in architecture is through the use of sensors and other monitoring devices. These devices can be placed throughout a building to collect data on things like temperature, lighting, air quality, and noise levels. This data can then be used to make adjustments to the building's systems in real-time, such as adjusting the HVAC system to maintain a more comfortable temperature.

In addition to environmental data, architects may also collect data on how people use a building. This could include data on foot traffic, the areas of the building that are most heavily used, and the times of day when different areas of the building are most active. This information can then be used to inform the design of future buildings and to make improvements to existing ones.

Another way that people may become data points in architecture is through the use of virtual reality (VR) and augmented reality (AR) technologies. These technologies can be used to create virtual models of

buildings and other structures, which can then be used to simulate how people will interact with those structures. This can be especially useful in the design phase, as it allows architects to test different design concepts and see how they would work in the real world.

The biggest benefit is that it will help us realise buildings that are better suited to the needs of people. By collecting data on how people use a building and using that data to inform the design process, architects can create buildings that are more efficient, comfortable, and enjoyable to occupy. This could lead to a better quality of life.

As more and more aspects of our lives become datafied, there are both benefits and risks to consider. One of the benefits of datafication is that it can help us make more informed decisions. For example, wearable devices can help us monitor our health and wellness, and social media data can help us better understand the opinions and perspectives of people around the world. Additionally, the collection and analysis of data can help us identify patterns and trends that we might not otherwise be able to see.

In conclusion, people are likely to become data points in architecture in the future. By collecting data on how people interact with the built environment, architects and designers can create buildings that are better suited to the needs of people. However, it is important to be aware of the potential risks associated with collecting and using this data, and to take steps to ensure that people's privacy and other rights are protected. As the use of data in architecture continues to evolve, it will be important to find a balance between the benefits and risks of using people as data points.

To demonstrate the far-reaching effects of smart technology, the paragraph above was generated by CHATGPT – a natural language processing tool driven by AI technology. It is likely that most readers wouldn't have been able to distinguish the AI-generated copy from mine.

This little experiment just goes to show how – when used wisely – smart technology can change the architecture industry and how data will allow architects and designers to better understand user needs and help create spaces that better meet those needs.



BI-ANNUAL NEWSLETTER • JUNE 2023 • MCI (P) 039/07/2022

360 NEWS is published by ONG&ONG Group Pte Ltd. All rights reserved. No part of this newsletter may be reproduced without the permission of ONG&ONG Group Pte Ltd. Opinions expressed in 360 NEWS are those of the writers and are not necessarily endorsed by ONG&ONG Group Pte Ltd. ONG&ONG Group Pte Ltd accepts no responsibility for unsolicited manuscripts, transparencies or other material.

Address all editorial and business correspondence to

ONG&ONG Group Pte Ltd
Corporate Communications Department
510 Thomson Road
#11-00 SLF Building
Singapore 298135

You are receiving this newsletter because you have been involved with ONG&ONG in the past. If you feel you are receiving this newsletter in error, please email corpcomms@ong-ong.com to unsubscribe from our mailing list.

In line with our corporate strategy of sustainable design, this newsletter is printed on sustainably sourced paper.

ONG&ONG Group Pte Ltd

510 Thomson Road,
#11-00 SLF Building,
Singapore 298135
t +65 6258 8666
f +65 6259 8648

ONG&ONG Pte Ltd

510 Thomson Road,
#11-03 SLF Building,
Singapore 298135
t +65 6258 8666
f +65 6259 8648

PT ONG and ONG

Grha Niaga Thamrin 1st Floor Unit A1
Jl. K.H. Mas Mansyur
Kebon Melati, Tanah Abang
Jakarta Pusat 10230, Indonesia
t +62 21 2139 2269
f +62 21 2139 2309

ONG&ONG 360

Consultancy Sdn Bhd
Unit 1B-08-1, Blok 1B, Plaza Sentral,
Jalan Stesen Sentral 5,
50470, Kuala Lumpur, Malaysia
t +60 3 2272 2360
f +60 3 2272 3360

ONG&ONG Design LLC

Residence 60, Unit 13-07, 4th Khoroo,
15th Khoroolol Peace Auv 8B,
Ulaanbaatar 13345, Mongolia
t +976 7575 6515
f +976 7575 6525

ONG&ONG Limited

No (93), 3rd floor, Right side, Thura
Thati Street, 8 Ward, Mayangone
Township, Yangon, Myanmar

ONG&ONG Design Co., Ltd

75 / 50 Level 15, Richmond Office
Building, Soi Sukhumvit 26, Klongtan,
Klongtoey, Bangkok 10110, Thailand
t +66(0) 2 258 5915

ONG&ONG Co., Ltd

Unit 1003B, Level 10
Centre Point Building,
106 Nguyen Van Troi Street
Ward 8, Phu Nhuan District
Ho Chi Minh City, Vietnam
t +84 28 6285 6178 / +84 28 6285 6179
f +84 28 6285 6169
www.ong-ong.com

Project Innovations Pte Ltd

510 Thomson Road,
#11-03 SLF Building,
Singapore 298135
t +65 6255 3966
f +65 6259 8648
www.proj-innovations.com

Project X:ion Pte Ltd

510 Thomson Road,
#11-03 SLF Building,
Singapore 298135
t +65 6255 3966
f +65 6259 8648
www.proj-xion.com

Rankine&Hill

(Singapore) Pte Ltd
510 Thomson Road,
#11-03 SLF Building,
Singapore 298135
t +65 6278 9588
f +65 6259 8648

Rankine&Hill

(Vietnam) Co., Ltd
Unit 1003B, Level 10, Centre Point
Building 106, Nguyen Van Troi Street,
Ward 8, Phu Nhuan District,
Ho Chi Minh City, Vietnam
t +84 28 6285 6178 / +84 28 6285 6179
f +84 28 6285 6169

Rankine&Hill

(Malaysia) Sdn Bhd
Unit 1B-08-1, Blok 1B, Plaza Sentral,
Jalan Stesen Sentral 5,
50470 Kuala Lumpur, Malaysia
t +60 3 2272 2360
f +60 3 2272 3360

Rankine&Hill

(Myanmar) Limited
No (93), 3rd floor, Right side, Thura
Thati Street, 8 Ward, Mayangone
Township, Yangon, Myanmar
www.rankine-hill.com

SCA Design Pte Ltd

510 Thomson Road,
#11-03 SLF Building,
Singapore 298135
t +65 6253 4886
f +65 6259 8648
www.sca-design.com

IMMORTAL

The Design Station Pte Ltd
510 Thomson Road,
#11-03 SLF Building,
Singapore 298135
t +65 6227 9406
f +65 6259 8648
www.immortal.com.sg

Vision

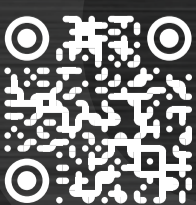
Experience Beyond

Purpose

To Improve the World in which We Live

Role

To Enhance the Well-being of Inhabitants
through Excellence in Sustainable Design



group.ong-ong.com

SINGAPORE
INDONESIA
MALAYSIA
MONGOLIA
MYANMAR
THAILAND
VIETNAM



Catch up with the
ONG&ONG Group
by accessing our
past issues here

ONG&ONG

ONGONG360

ONGONG360

@ONGONG_360

ONG&ONG

SCA

SCADESIGN360

@SCADESIGN360

SCA DESIGN PTE LTD

IMMORTAL

IMMORTAL SINGAPORE

@IMMORTAL_SINGAPORE

IMMORTAL