

360 NEWS

Downtown Line
Master Planning in Mind
Our Specialist Studios
High Speed Rail Project

MARCH 2018 • MCI (P) 11/11/2017



CONNECTING
PEOPLE
& NATIONS

EXPERIENCE
BEYOND.

ONG&

New Directors

Welcome Onboard

The new year brings new faces. Please allow us to introduce our newest Directors. Some are new additions to the ONG&ONG Family, while a few others are familiar faces assuming new leadership roles.



Lim Kok Hui
ONG&ONG, Architecture
Mongolia

Working in Frontier markets denotes a certain adventurousness. Our operation in Ulaanbaatar sits at the gateway to Central Asia – a region brimming with potential. Please welcome back Kok Hui, who will join a growing ONG&ONG team to further strengthen our position in the Mongolian capital.



Ng Cho You
ONG&ONG, Architecture
Malaysia

Our KL Office continues to establish the ONG&ONG name throughout the peninsula. With a slew of demanding projects on the horizon, experience, leadership and professionalism will be essential. So we're delighted to welcome Cho You to the fold, newly appointed Director of Architecture for our talented Malaysian team.



Paul Roger Lim
Project Innovations
Singapore

Orchestrating the multiple components, involving consultants, designers, contractors and more require resourcefulness. Organisational know-how comes through experience, and working on numerous projects across a variety of industries and scale is a sure fire way to know the ropes, and learn a few tricks. Paul, Project Innovations' newest Director, Paul Lim, brings all this in spades.



Elli Wang
SCA Design
Singapore



Kee Choon Yen
SCA Design
Singapore



James Loh
SCA Design
Singapore

Promoting from within the tribe is always a positive reflection on the manner in which we cultivate and nurture in-house talent. Rising to take the reigns at SCA Design are an immensely talent trio. Choon Yen, Elli and James have cut their teeth in the industry, as they like to say, and we're proud that they've accepted the challenge that taking the helm of leadership entails.



Teh Yong Hui
Rankine&Hill, M&E
Singapore

Rankine&Hill undertakes some of the most ambitious and complex M&E projects around. The learning curve is steep. The job is demanding, meaning the cream always rises, so congratulations to Yong Hui - newly promoted Director for M&E Engineering.

Regional Office Updates

Welcoming a brand new year always spells fresh starts. We check in around Asia for the latest updates.



Getting Hot in Hanoi

At ONG&ONG, innovation and forward thinking are not limited to design. Believing that a fresh approach suited our foray into Hanoi, the decision was taken to establish a more agile presence with enhanced adaptability and responsiveness. To truly capitalise on Hanoi's continued development and growth, ONG&ONG wanted to establish a foothold in the city as quickly as possible.

Partnering with Toong Coworking Space, Vietnam's leading proprietors of professional shared working environments, ONG&ONG will look to quickly localise operations. Adapting to any new working environment represents a unique set of challenges, and setting up shop in Hanoi will be no different.

ONG&ONG will look to benefit from the synergistic environment provided by Toong facilities, allowing the firm to truly connect with a new market, while also working to lower overheads and operational costs.



Flagship Status for Jakarta Office

It's no secret that operations at our Indonesia office has really started to heat up. South East Asia's largest economy is teeming with potential, and ONG&ONG is perfectly positioned to capitalise on an increasingly robust market.

Following in the footsteps of the flagship ONG&ONG office in Kuala Lumpur and our Headquarters in Singapore, operations in Jakarta will step up to the next level. With an increase in total staff strength, as well as an expansion of the capabilities on offer, the sky's the limit for one of our most promising international outfits.

Operations will move into new premises, which will feature sleek, new flexible working environments conceptualised with the latest in technology and space planning – complete with splashes of the bold ONG&ONG orange and signature modernist aesthetic.

Awards



AI-Ansar Mosque



Heartbeat @ Bedok



Macpherson Interchange MRT Station



Oasia Hotel Downtown



Kamala Kandara



Yishun Nature Park

Our Latest Awards

We are always humbled to receive the acclaim and recognition of our peers and contemporaries in the design industry. Having a local office in a host of major cities means that ONG&ONG teams all over the world are always putting their creativity and dedication toward helping out clients achieve their goals. Because at the end of the day, at ONG&ONG striving towards great design is a priority, but creating greater experiences is how we truly gauge success.

We open 2018 riding on the crest of successes from the preceding year, with ONG&ONG invited to present two projects at the prestigious WAF (World Architecture Festival) Finals. The highly acclaimed Yishun Nature Park project added to its growing list of honours as our Landscape Design team presented this heralded green community project. Our talented Indonesian team also garnered a spot amongst the finalists in the residential – future projects category, showcasing the innovative Kamala Kandara development – an innovative mixed-use high-rise project in Bekasi City.



Gateway Theatre



Spottiswoode Suites



Le Quest



Tiong Seng Building



Ulu Pandan Bus Depot



Hundred Palms Residences



Wang Residence



Adult Disability Home
Sembawang Walk



Gold Coast Sea View Apartment



Golden Valley Residences

fruits of our labour

Awards



Yishun Nature Park

World Architecture Festival
Landscape of the Year, Finalist

Principal Leads and Team Members:
Peter Bridgewater *Landscape*

Kamala Kandara

World Architecture Festival
Residential - Future Projects, Finalist

Principal Leads and Team Members:
Kurjanto Slamet, Loh Kah Wai, Dominicus Krisna
Hardianto, Susanto Ginanjar Putro & Ignatia
Servina Kamaputri *Architecture*
Stanley Tan *Brand Engagement*



The Ulu Pandan Bus Depot Off Boon Lay Way

BCA BIM Award, Gold^{PLUS}

Principal Leads and Team Members:
Wendy Tan, Josephine Loo, Khor Siew Hui,
Elmer Jay Caparros Matriano, Joey Atienza &
Gina Reniedo Bondoy *Architecture*
Richard Teo, Khin Myat Thet Win &
Chionh Ken Kiat *M&E*

Tiong Seng Building

BCA BIM Award, Gold^{PLUS}

Principal Leads and Team Members:
Richard Teo, Su Su Aye &
Khin Myat Thet Win *M&E*

Hundred Palms Residences

BCA BIM Award, Gold^{PLUS}

Principal Leads and Team Members:
Tan Peck Khoon, Chun Junyuan & Jimmy *M&E*

Adult Disability Home at Sembawang Walk

BCA BIM Award, Gold

Principal Leads and Team Members:
Wendy Tan, Ratnasingam Sivakumar, Lee Chun
Khan & Grace Loh *Architecture*
Goh Teck Sin, Bernadette Toh *C&S*
Tan Peck Khoon, Brandon Li &
Chin Yee Woei *M&E*



Macpherson Interchange MRT Station

Fire Safety Design Excellence
Public Infrastructure Category
(QP/Consultant Firm), Outstanding

Principal Leads and Team Members:
Wendy Tan, Wang Lai Meng, Delina Leonardo
Salvador, Khor Siew Hui & Grace Loh *Architecture*

Oasia Hotel Downtown

Fire Safety Design Excellence
Commercial Category
(QP/Consultant Firm),
Honourable Mention

Principal Leads and Team Members:
Shahrom Bin Mohamed Ariff &
K Mohamed Jawith *Engineering*



Heartbeat @ Bedok

The American Architectural Prize
Landscape Architecture Category, Winner

Principal Leads and Team Members:
Ashvinkumar Kantilal, Robert Brodeth,
Magat Rose Michelle Guanzon,
Christina Sumanga & Renny Melina *Architecture*
Lena Quek *Landscape*
Shahrom Bin Mohamed Ariff, K Mohamed Jawith,
Chng Wei Xiang & Lam Siew Ping *M&E*

Al-Ansar Mosque

The American Architectural Prize
Architectural Design - Renovation
& Restoration Category, Winner

Principal Leads and Team Members:
Kurjanto Slamet, Loh Kah Wai,
Giovanni Bautista & Nancy Tan *Architecture*



Gateway Theatre

The American Architectural Prize
Commercial Architecture Category,
Honourable Mention

Principal Leads and Team Members:
Andrew Lee, Benson Wee &
Poon Yew Wai *Architecture*
Lena Quek *Landscape*
Jerome Tan *Lighting*
Lee Chek Shih, Lam Siew Ping *M&E*



Oasia Hotel Downtown, Singapore

SIA Architectural Design Award
Commercial - Hotel Category,
Building of the Year (Engineering)

Principal Leads and Team Members:
Shahrom Bin Mohamed Ariff &
K Mohamed Jawith *Engineering*



Yishun Nature Park

Singapore Landscape Architecture Awards
Parks and Public Spaces,
Silver Award

Principal Leads and Team Members:
Peter Bridgewater *Landscape*



Oasia Hotel Downtown

ACES Design Excellence Awards 2018,
M&E A2 Category, Merit

Team Members:
Shahrom Bin Mohamed Ariff &
K Mohamed Jawith *Engineering*



Wang Residence

PropertyGuru Asia Property Awards
Best Condo Architectural Design
(Indonesia), Winner

PropertyGuru Indonesia Property Awards
Best High End Condo Architectural Design,
Award Winner

PropertyGuru Indonesia Property Awards
Best High End Condo Development
Architectural Design, Highly Commended

Principal Leads and Team Members:
Kurjanto Slamet, Loh Kah Wai &
Ramly Sutan *Architecture*
Teo Boon Kiat *Interior Design*

Gold Coast Sea View Apartment

PropertyGuru Asia Property Awards
Best Condo Architectural Design (Indonesia),
Winner

PropertyGuru Indonesia Property Awards
Best Mid Range Condo Development (Jakarta),
Award Winner

PropertyGuru Indonesia Property Awards
Best Mid Range Condo Architectural Design,
Award Winner

Principal Leads and Team Members:
Kurjanto Slamet, Loh Kah Wai, Patricia Widjaya,
Giovanni Bautista, Ramly Sutan, Andi Alif
Shalahuddin *Architecture*
Teo Boon Kiat *Interior Design*
Lena Quek *Landscape*

Le Quest

PropertyGuru Singapore Property Awards
Best Condo Interior Design, Winner

Principal Leads and Team Members:
Teo Boon Kiat, Larry Wang Jinlu &
Jaron Low Chon Hern *Interior Design*

Spottiswoode Suites

PropertyGuru Singapore Property Awards
Best Luxury Condo Development
Best Luxury Condo Architectural Design, Winner

Principal Leads and Team Members:
Ashvinkumar Kantilal & Sandy Foong *Architecture*

Golden Valley Residences

PropertyGuru Myanmar Property Awards
Best Housing Development Architectural
Design, Winner

PropertyGuru Myanmar Property Awards
Best Housing Design, Highly Commended
Principal Leads and Team Members:
Andy Goh & Ong Qi Rong *Architecture*



Heartbeat @ Bedok

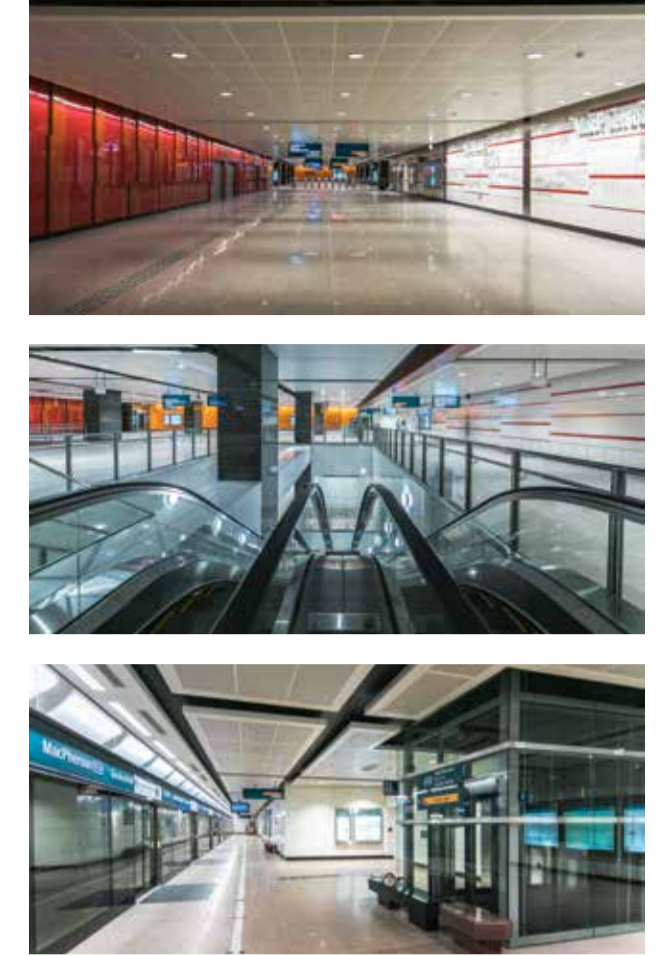
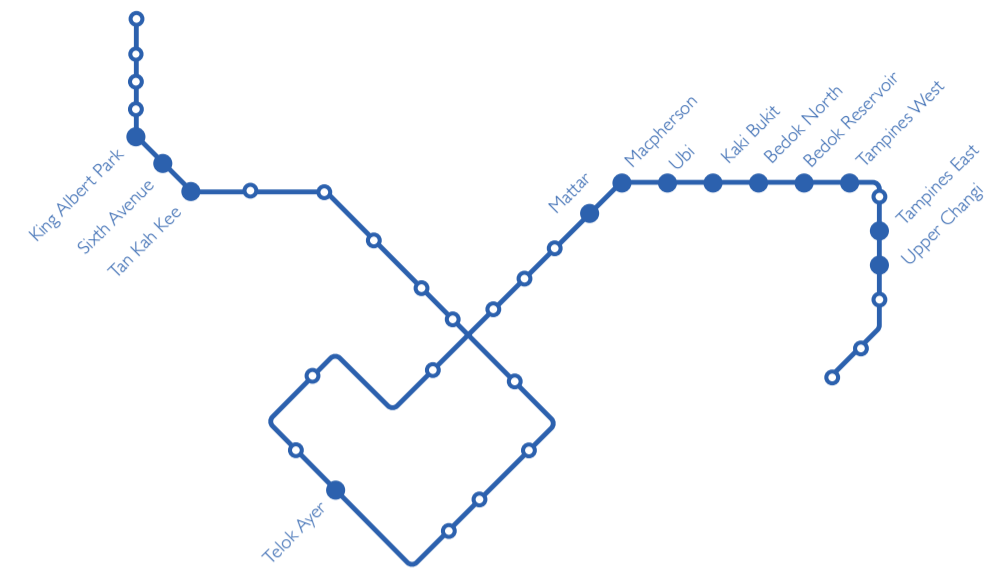
The American Architectural Prize
Landscape Architecture Category, Winner

Downtown Line: Moving People

More stations make for better connectivity. ONG&ONG is proud to have contributed to the Downtown Line. Singapore

Singapore's MRT system is the envy of nations the world over. Efficient, fast and convenient, daily commutes in the city-state are effortless thanks to a growing network of trains and lines. Transportation infrastructure is a cornerstone of national development, bearing the weight of a nation as it moves and travels through the course of daily life. Singapore's Downtown Line represents a continued, sustained effort to enhance accessibility and connectivity throughout the island - enabling ease of movement for as much of the population as possible.

- Upper Changi
- Tampines East
- Tampines West
- Bedok Reservoir
- Bedok North
- Kaki Bukit
- Ubi
- Macpherson
- Mattar
- Telok Ayer
- Tan Kah Kee
- Sixth Avenue
- King Albert Park



Macpherson

Situated at the intersection of Circuit Link and Circuit Road, Macpherson station serves as an interchange with the Circle Line. Comprising three levels - concourse, mezzanine and platform - the station has two entrances and serves industrial buildings, residences and the Geylang Neighbourhood Police Centre.

Featuring a design concept that blends with the surrounding area, with variations of brick and box patterns used throughout the station as a nod to the nearby estates' rich heritage. The station interior is highlighted by 3D tonalities of brick red accents, giving Macpherson station its unique character. Macpherson Interchange Station was conferred the 'Outstanding Fire Safety Design Excellence Award', the most prestigious award of fire safety design in Singapore.

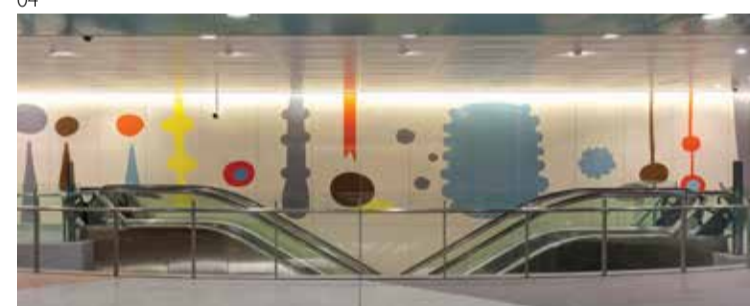




Downtown Line. Singapore

Principal Leads and Team Members:
Wendy Tan, Wang Lai Meng, Neil Oscar, Joey Maickel, Atienza, Leonardo Delina & Anthony Gaza *Architecture*

Stations:
Bedok North
Kaki Bukit
Ubi
Macpherson
Mattar
Telok Ayer



Downtown Line

01 – 03 Kaki Bukit

Situated near the junction of Jalan Damai, Kaki Bukit station serves industrial buildings, schools and neighbouring residences. The station contains intermediate, concourse and platform levels, with two entrances that are linked by an electric blue bridge to the interior areas.

The station exterior features glass, steel, and three tones of grey aluminium panels, merging it with the surrounding urban landscape. Highlighting the station interior is a feature wall with a modulated screen pattern, along with simple granite-clad columns that help anchor the 3-storey space.

04 – 05 Telok Ayer

Part of the first phase of Downtown Line stations, Telok Ayer Station sits within the Downtown core. Exits lead to Cross Street, neighbouring office buildings, and bus and taxi connections, as well as Raffles Place Station which is a short 10-minutes away.

Serving the many offices in Singapore's bustling CBD (central business district), the station also sits in close proximity to leisure and nightlife spots. The station's design reflects the liveliness of the area, boasting artwork that captures the vibrancy of modern life.

06 Mattar

Located at the intersection of Merpati and Mattar Road, Mattar station serves an intermediate zone between dense commercial and suburban residential areas. Two entrances join the station to residential estates, schools, commercial buildings, as well as Masjid Sallim Mattar Mosque and Macpherson Community Centre.

The station exterior features three tonalities of brown alluding to Mattar trees from which the name is derived. Earthy tones follow into the station's interior, where the focus is the aluminium panel ceiling complete with accents of staggered strips and a staggered floor pattern that spans the station's concourse and platform levels.

07 – 10 Ubi

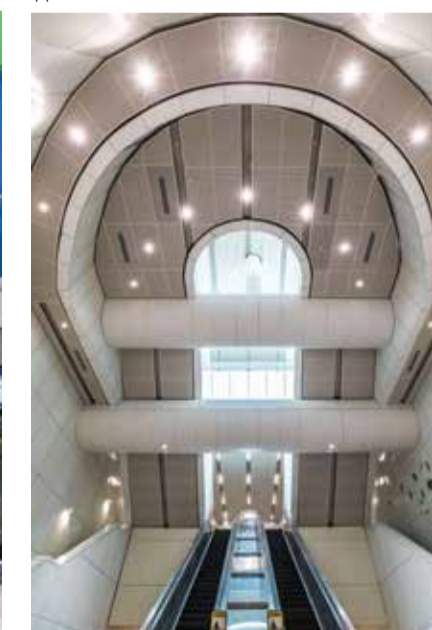
Located along Ubi Avenue 2, Ubi station serves commercial buildings, industrial sites, as well as nearby residences and schools. The station contains two entrances that lead to residential estates, with covered linkways providing shelter to the bus stop and drop off areas.

Bronze features prominently in the station's final design. The colour is used to depict the colour of ubi, which means tapioca in Malay. Aluminium panels, granite stone and bronze laminated glass highlight the station exterior and entrance. The interiors feature a vibrant mixture of blue, green and white that culminates in a 3D staggered wall that spans the station's concourse and platform levels.

11 – 13 Bedok North

Situated on Bedok North Road near the Pan-Island Expressway flyover, Bedok North Station comprises three levels – concourse, mezzanine and platform. Three entrances link the station to the surrounding area, serving neighbouring HDB estates, industrial buildings, Bedok Town Park and Damai Primary School.

Inspired by the Umbrella trees found around the area, the station's design is themed around nature. Sturdy wood-brown cladding lines one side of the concourse, together with leaf graphics, dubbed Deduan Masa (Leaves of Time), which adorn the station's walls and walkways.





Downtown Line. Singapore

Principal Leads and Team Members:
Andrew Lee, Steven Low, Benson Wee,
Neil Oscar, Benedick Badenas,
Edmundo Nalangan, Eliza Manglicmot,
Hanna Fatin, Ryan Tan, Erick Suarez,
Raymond Bachtiar, Ramil Polintan &
Joanne Goh *Architecture*

Stations:
Upper Changi
Tampines East
Tampines West
Bedok Reservoir
Tan Kah Kee
Sixth Avenue
King Albert Park

06 – 07 King Albert Park

A water theme pervades the design for this station, the element reflecting the canal beside it. Enamel turquoise and blue-green panels suggest the broken surface of water, a concept continued in the vertical and rippled patterns along the platform.

01 – 02 Upper Changi

Located on Upper Changi Road East, Upper Changi station is the longest on the Downtown line. Containing three levels and four entrances, the station is also connected to the surrounding area through underground linkways to increase accessibility and convenience.

08 – 10 Sixth Avenue

The element of air inspired this station. Enamel glass stripes of different shades of blue lead the eye from one entrance pavilion to the next. The design continues to flow down to the lower levels in dips and curves to suggest air flow.

Serving the Singapore University of Technology and Design (SUTD), along with nearby residential estates, the station design references its urban context. Clean, white-based interiors marked with crisp orange accents characterise the final design, which also includes an art installation completed with contributions from SUTD students.

11 Tampines West

Situated along Tampines Avenue 4, Tampines West station will serve nearby schools, residences and Temasek Polytechnic. Two entrances lead to adjoining HDB estates, while also connecting commuters to taxi stands, drop-off points and a bicycle park.

**03 – 05
Tan Kah Kee**
Taking its design cue from the open, park-like setting, this station's overarching theme is 'nature and flow'. The entrance pavilions have been conceived as a continuous enveloping canopy, with a distinctly modernist feel of clean geometric lines and green panels.

Conceived as an urban marker, the station is predominated by bold shades of orange that resonate with the energy and vibe of the surrounding neighbourhood. Station entrances were designed to be simple but dynamic, while the full height of the interior spaces is accentuated by a totemic glass façade that lines the lift structure.

12 Bedok Reservoir

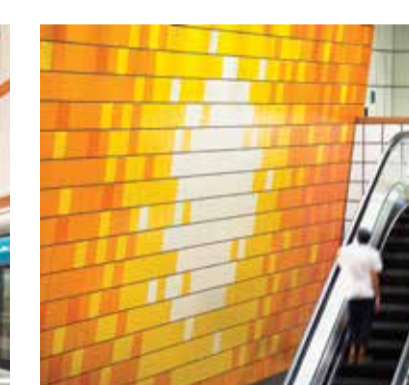
Conceptualised as a "Station in a Park," Bedok Reservoir station features a bold design intended to make it a focal point within the precinct. Serving numerous schools and residences, the station features two entrances linking it to nearby estates and the surrounding park.

Intended to be an open and welcoming link for the local community to the heart of the city, the station entrances feature sculpture-inspired designs. Conceived as outdoor reception areas, they work to create a seamless transition between outdoor public spaces and the station's interior architecture.

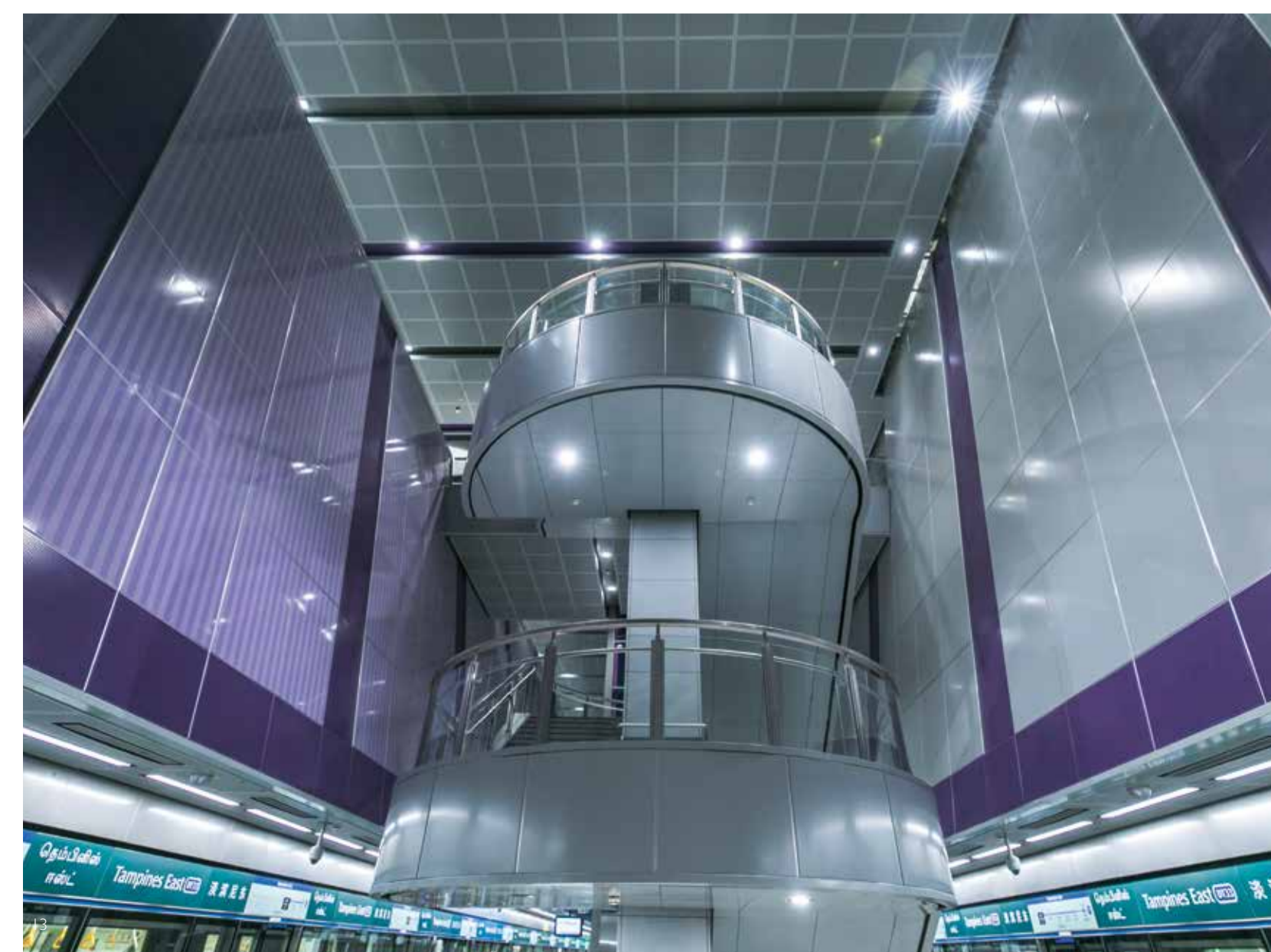
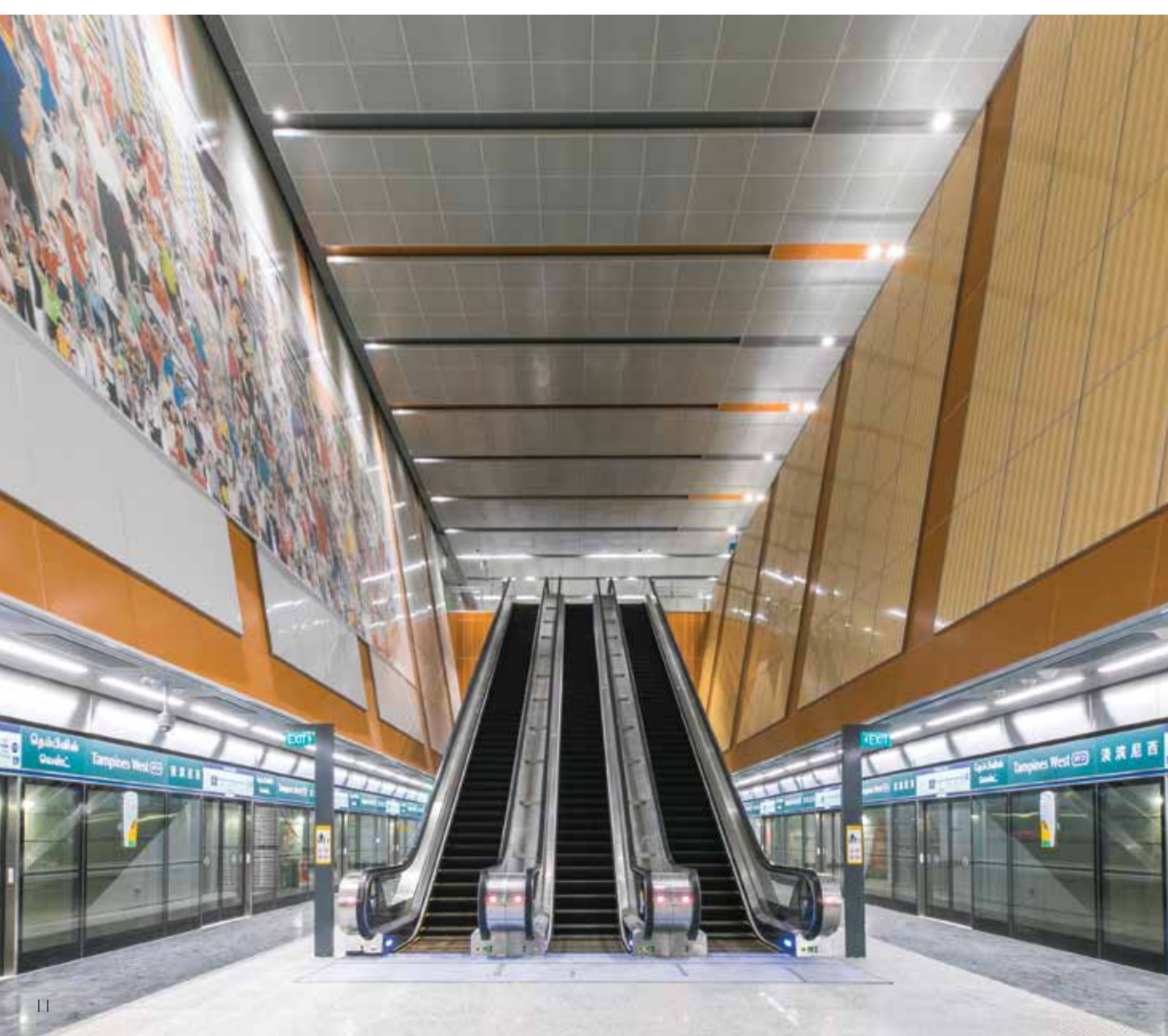
13 Tampines East

Located at the junction of Tampines Avenue 2, Tampines East station serves schools, residences and nearby Tampines North Park. Four entrances link the station to schools including Tampines Junior College, as well as HDB blocks in the vicinity.

The station design is highlighted by the bold purple that marks the entrances and interior spaces. A glass façade accented by linear coloured-shades reflects the station's place as one of the focal points within the precinct, encouraging social interaction between commuters.



Downtown Line





Melaka Station



Melaka Station



Seremban Station



Seremban Station



Kuala Lumpur-Singapore High Speed Rail Project

ONG&ONG plays a major role in this ambitious international mega project. **Malaysia**

Principal Leads and Team Members:

Andrew Lee, Louis Tan, Harith Yusof, Ramil Polintan, Kelvin Phua, Ryan Manaloto, Arnel Sales, Nik Elani, Foo Wei Min, Mohd Pajjan, Nur Syaira & Abdullah Architecture
Leung King Fai BIM

A strategic collaboration between the governments of Malaysia and Singapore, the Kuala Lumpur-Singapore High Speed Rail (KL-SG HSR) project with 8 stops along a 350km alignment aims to facilitate seamless travel between the Malaysian capital and the island-city.

The magnitude of the KL-SG HSR project saw Malaysian Prime Minister Najib Razak providing official guidance and direction for the overall design of the 7 HSR stations in Malaysia. Following a sophisticated design approach, the station concepts were required to feature clean, modern aesthetics, but more importantly, also embodying vital aspects of the Malaysian identity and culture.

On the strength of ONG&ONG's longstanding commitment to nation building, and bolstered by a track record for excellence in transportation infrastructure, the firm is honoured to contribute to the mega-infrastructure project. Design teams in Kuala Lumpur and Singapore worked closely

to produce the two station concept designs in Seremban and Melaka that have undoubtedly met with the project's exacting demands.

Nestled in the heart of the Malaysia Valley Vision project, the Seremban station integrates the lush backdrop of its verdant natural surroundings with a futuristic design that references nearby Sri Menanti Palace.

The firm's second contribution, the Melaka station, taps into the state's rich history and colonial roots, with a conceptual design featuring an intricate series of sails inspired by traditional merchant ships.

Expected to be operational by end 2026, the KL-SG HSR will set the standard for joint international projects. Enhancing bilateral connectivity and social ties, the rail system will boost overall travel efficiency, with expected travel time between Kuala Lumpur and Singapore reduced to just 90 minutes.

SilverKris Lounge Bangkok

OXD designs Singapore Airlines latest lounge. **Bangkok, Thailand**

Principal Lead:
Joshua Teo Experience Design

Since unveiling the first of the new SilverKris Lounges in Sydney in 2013, Singapore Airlines (SIA) has continued to roll out updates for its signature First and Business Class Lounges around the world. Part of the airline's S\$100 million (US\$79 million) upgrading programme, the recently relaunched SilverKris Lounge Bangkok joins a growing list of upgraded lounges in key destinations.

Every new-look SilverKris Lounge follows a modernised and reimagined aesthetic developed by ONG&ONG's OXD, and Bangkok is no different. Employing extensive research, end-users focus groups, and the application of Design Thinking fundamentals, the OXD team created a revamped SilverKris Lounge concept that has hit all the right notes.

Drawing on the essential elements of home, spiced with tasteful dashes of luxury, the new lounges will all keep with the simple, heartfelt notion of being A Home Away from Home. At different SilverKris Lounges around the world, travellers will be awash with a sense of home sprinkled with a tinge of local

flavour. There they will enjoy not only effortless personal service, but also an array of delectable refreshments, keeping with the SIA trademark for authenticity and refinement.

Like other SilverKris Lounges, the Bangkok lounge is also integrated with numerous touchpoints that resonate deeply with the SIA brand - reflecting the airline's strong heritage and unparalleled reputation. The lounge experience begins at the welcome foyer, where a bold blue-grey marble wall greets travellers. An elegant batik screen secludes the entrance, with the luxurious lounge concealed behind.

Inside the lounge, Singaporean artwork and locally-sourced pieces adorn the walls. A delightful mix of shared and private spaces tailored for flexibility are available, fitted with plush furnishings and a host of modern conveniences to keep travellers in supreme comfort. From productivity pods and multimedia stations, to intimate nooks for respite and relaxation, the modern traveller will certainly feel right at home.



KAP-House

A bespoke home by one of our award-winning residential teams.
Singapore

Principal Leads and Team Members:
Diego Molina, Maria Arango, Lee Cheow Yeh, Tomas Jaramillo, Eleazar Manahan, Ryan Manuel & Julius Caramat Architecture



KAP-House sits within a well-heeled residential enclave, with wild grassland that grows from the old Malayan Railway Line serving as a rustic backdrop. The house includes four bedrooms and an additional guestroom, along with a sprawling garden, a 25m lap pool, and a subterranean multimedia room.

Simplicity reigns as clean lines and bold structural elements manifest into an elegant design. The architects deployed a programmatic approach when conceptualising the house. KAP-House features a series of rectilinear volumes placed in interlocking juxtapositions, where individual rooms were conceived in accordance with how their space would be utilised.

Fully attuned to the environment, KAP-House is predicated on capturing its marvellous natural milieu, as the architects carefully aligned the house to emphasise borrowed views of the green corridor. Elemental considerations were also prioritised as the design team accounted for factors such as wind direction and solar positioning, introducing a sustainable design framework that allowed the implementation of passive environmental controls within the house programme.

A holistic approach was employed in order to achieve a harmonious integration between architecture, interior design, and landscaping. Further accentuating the overall design is a meticulously curated material palette - reflected in the stone and timber facades, placid blue pools and waterways, and lush gardens greenery, which bestow KAP-House undeniable aesthetic quality.

KAP-House is predicated on versatility. The architects' intention was to allow the greenery of the garden exterior, and the borrowed view of the rail corridor beyond, to traverse into the refined spaces of the house - creating a seamless transition between interior and exterior spaces.





Mövenpick Resort

An outstanding addition to the pristine sands of Phuket.
Mai Khao, Thailand

Principal Leads and Team Members:
 Andy Goh, Ong Qi Rong, Chanapa Wongraveekul,
 Palakung Uraivan, Thanaporn Raungphungthong &
 Tippisuit Puttajun *Architecture*
 Teo Boon Kiat, Dulkfli Bin Kudsi & Amy Ling *Interior Design*

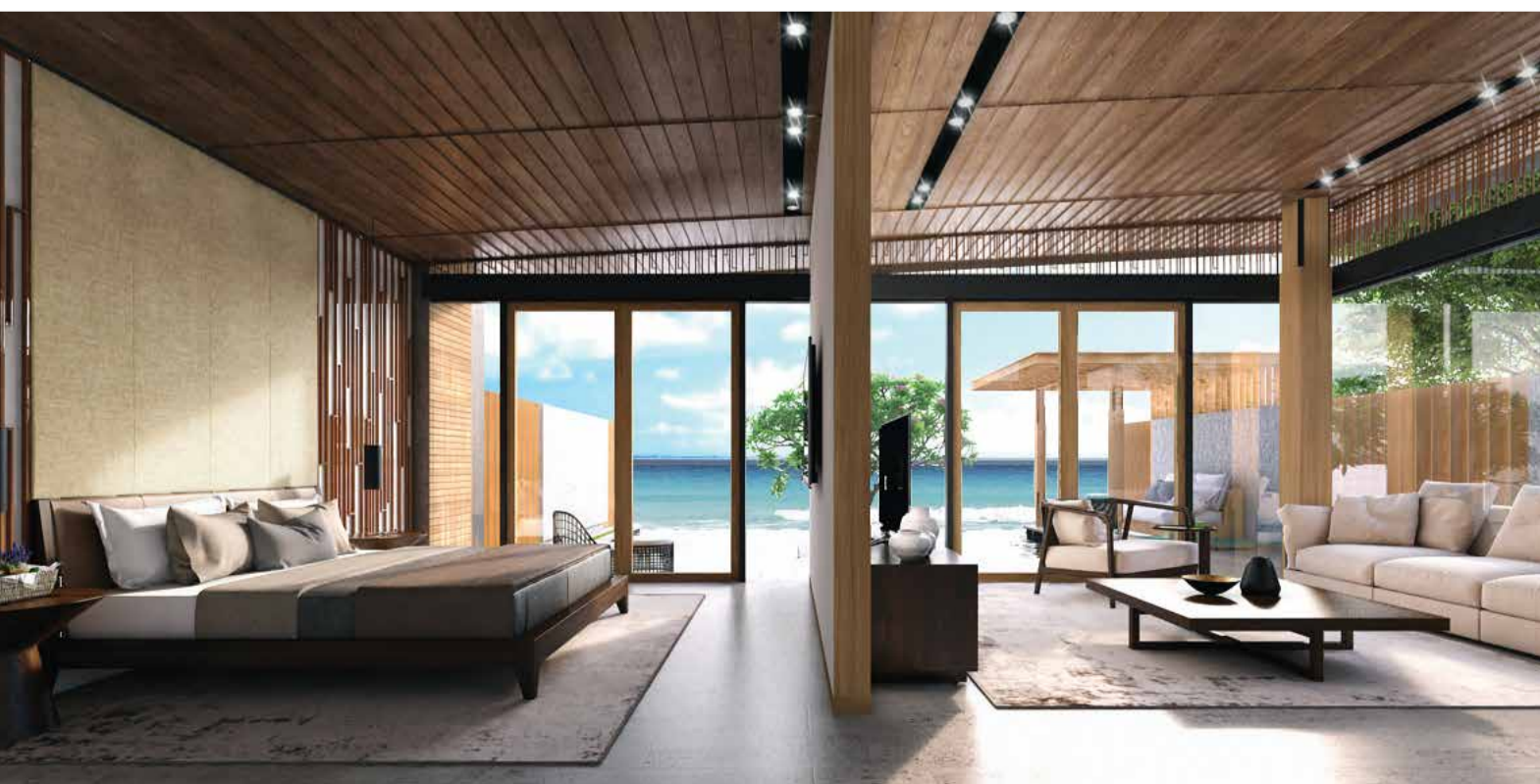


Mövenpick Resort sits on a pristine stretch along Phuket's famous Mai Khao beach, where an ageing resort was revitalised and updated to suit contemporary tastes. The resort aims to provide a holistic stay experience that promotes wellness, which is fast gaining popularity as a modern lifestyle pursuit. With wellness offerings as a key feature, the revamped resort is poised to be an ideal setting for authentic, experiential and multi-generational travel.



Drawing inspiration from nature, the reimagined resort design mimics natural features and landforms. Greenery is another natural touch, where a new façade design will bestow a fecund feel to the refreshed lifestyle concept. Water is central to the new design: the hotel blocks have been likened to 'canyons' surrounding a coursing river.

Water features meander throughout the site, reaching the doorstep of each hotel block before culminating on the sandy banks of the majestic beaches nearby. Guests and visitors will not only be able to enjoy a multitude of water-related leisure activities, but will also enjoy stunning views of the breathtaking natural coastline.



The healing properties of water and aqua-centric activities figure prominently in the development's spatial experiences. Water features at the new resort will serve not only to adorn and beautify the site, but are also intended as focal points to encourage a socially vibrant atmosphere.

The design team aspired to create a design that would blur the lines between indoor and outdoor spaces, where guests could experience all the joys of waterfront living - combining natural splendour and the luxury of modern comforts.



Eco-Sanctuary Show Village

ONG&ONG create a preview of the homes on offer at this ambitious residential development.
Selangor, Malaysia

Principal Leads and Team Members:
 Tan Kee Keat & Yip Kah Kuen *Architecture*

From concept to completion, property development is an arduously painstaking process that requires meticulousness and no small amount of fortitude. The design and construction process, encompassing ideation to implementation, is sometimes drawn out over lengthy periods of time before a project becomes a reality.

The ambitious Eco Sanctuary project, spanning an extensive section of Western Klang Valley in Selangor, Malaysia, is impressive in terms of both quality and scale. Featuring a variety of elegant homes and residences, this exclusive gated community has the potential to be a game changer for this up and coming area.

Envisioned as an idyllic eco-themed haven offering a wholesome, rejuvenating environment, the

Eco-Sanctuary development will be characterised by first class modern touches and immaculate landscaping, backdropped by the rustic natural landscape. From enchanting water features to magnificent entrances and driveways, there is no doubt that residents and their guests will be left enchanted by this groundbreaking project.

To showcase the potential of Eco-Sanctuary, whetting the public appetite in anticipation of the project's completion, the ONG&ONG team oversaw the development of Show Village. Featuring model homes and examples of the variety of layouts and configurations on offer, the show village will allow prospective homeowners and buyers to get a taste of their future lifestyle.



Eco-Sanctuary



Vista Verde

ONG&ONG Vietnam adds another outstanding project to its growing Vietnamese portfolio.
Ho Chi Minh City, Vietnam

Principal Leads and Team Members:
 David Ching, John & Hoang Le Quoc Anh *Architecture*
 Huynh Thi Quoc Huong *Landscape*

Vista Verde is strategically located in Thanh My Loi Ward within the heart of District 2. The development sits a quick 5-minute drive away from a number of essential amenities, including Metro Hypermart, Parkson Department Store, Lotte Cinema, Phuc An Khang Hospital, and prestigious international schools such as ACG International School. A mere 10 minutes away from Districts 1 and 7, Vista Verde is highly accessible, boasting excellent connectivity to many of the city's major road networks via the Thu Thiem Tunnel, Thu Thiem Bridge, Saigon Bridge and Phu My Bridge.

Named 'verde', which means green in Spanish, Vista Verde is defined by an abundance of greenery and immaculate landscape design. Predicated on bringing greenery to every doorstep, residents will enjoy a symphony of nature at this splendid new development. Vista Verde provides residents with an impressive array of recreational facilities, including a state of the art gym and fitness facilities, as well as a stately clubhouse that will boast 360° panoramas of the surrounding landscape. Aiming to create a residential development with resort-style amenities, Vista Verde contains a swimming pool, lounging islands, jogging track, and tennis court, ensuring that residents will never be short of leisure options. In addition, a shopping town at the ground floor provides residents easy and convenient access to essentials and sundries.

Designed to epitomise modern city living, homes in Vista Verde boast spacious living and dining areas, as well as generous bedroom spaces complete with breathtaking views. With more than 30 homes available at Vista Verde all available in finishes of the highest quality, the development will even offer a selection of premium housing options including duplexes and penthouse units that have private elevator access.



Verde



Sala Sarica

The first of many designs from a highly anticipated Vietnamese Master Plan development.
Ho Chi Minh City, Vietnam

Principal Leads and Team Members:
 Hoang Huu Dung & Tran Minh Nghia *Architecture*
 Dang Hoang Tung *Civil & Structural Engineering*
 Raymond Thai Don Thanh *Interior Design*
 Huynh Thi Quoc Huong *Landscape*

The first of the properties released under the ambitious Sala Urban Development project, Sala Sarica features an impressive range of high-end apartments, together with an upscale retail component. Pivoting from initial plans for the Sala Sarica section, the client decided to focus on creating apartment homes that would be ideal for young families.

Adopting a pragmatic approach, Sala Sarica contains 2- and 3-bedroom units sized between 101m² to 147 m². Boasting wonderful views of the surrounding cityscape and the nearby park, the final design combines optimised living spaces that are balanced and harmonised with touches of nature. Sala Sarica also features a suite of luxury amenities including a spa, lap pool, screening room, private laundry service, gym and fitness facilities, along with a magnificent feature clubhouse – ensuring that residents will want for nothing.

The feature clubhouse is very much the heart of the Sala Sarica development. Housing a number of key facilities, the clubhouse comes complete with an e-deck level which will feature themed landscaping – providing residents with the perfect setting for socialising and recreation.

Finally through its luxury retail component, Sala Sarica will introduce a new form of retail space to the Vietnamese market. The development will feature Shop Apartments, 3-storey units with flexible layouts that combine both commercial and residential spaces. Imagined as a defining aspect of the entire Sala Urban project, the versatile Shop Apartments are predicated on versatility, allowing owners to blend and adapt the unit to suit a variety of purposes and needs.

Sala Sarica





FHM



FHM Bachelor Apartment

Refinement and style are personified with this interior design project.
Bangkok, Thailand

Principal Leads and Team Members:
Joe Sarawoot Chatdech, Anat Rungrusamiwatanakul, Narakorn Srichainak & Sompong Tipsrisakul Interior
Gail Sripaipan Lighting

The FHM Bachelor Apartment is a stunning 3-bedroom New York inspired loft sitting on the 49th floor of the Circle Prototype, an exclusive high-rise condominium in Central Bangkok. To fulfil the vision of a true bachelor's residence, the revamped interiors convey a sophisticated vibe that is assuredly refined and undeniably sleek.

The interior plan was shifted and reconfigured, opening up the space to fully accentuate the apartment's breathtaking 270° panoramic view of the Bangkok cityscape - the vibrant urban skyline, a shifting metropolitan tapestry that is abuzz day and night.

The revitalised residence is characterised by a preponderance of monolithic natural stone. A carefully conceptualised backdrop of warm timber wall panelling and tinted mirrors helps balance the space against the stone. Connecting the spacious main living area to the service area is a versatile counter that can be converted into a bar for evening entertainment. Envisioned for social events and a modern lifestyle, the final touch for the rekkited apartment features private spaces concealed behind a sleek mirror door, opening to reveal a plush master bedroom complete with en-suite bathroom, walk-in closet, private study area and balcony.





Spottiswoode Suites

Sophistication and style come in spades at this superlative new ONG&ONG design. Singapore

Principal Leads and Team Members:
Ashvinkumar Kantilal & Sandy Foong *Architecture*
Lena Quek *Landscape*

This SOHO-style residential skyscraper facade was designed to signify the city unfolding to its residents. In addition to its capaciousness, each unit is well planned to maximise space. Each has high ceilings and large windows that ensure generous natural lighting and ventilations, and a north-south orientation that helps maintain large amounts of shade and minimises heat gain.

Each unit offers views of the city and the sea, ranging from Singapore's southern coast, to the Central Business District (CBD) and Sentosa Island. The penthouse units are bi-level, double-volume spaces with a balcony and private spa tub.

Spottiswoode Suites also has five specific floors with top-tier facilities. Plaza 1 houses the brick-paved driveway that marks the entrance, a guard house and side gate, drop-off point, entrance foyer, lift lobby, tennis court and four levels of above ground parking.

Soiree 4 (on Level 4) contains a barbecue and event pavilion and sunset lounge alongside restrooms, lift lobby and multi-storey car park.

Aqua 5 (Level 5) is designed for relaxation, with water amenities such as a lap pool, sun deck, chill out lounge, aqua cove and water massage alcove. Aqua 5 also houses spa pods, aqua reflexology paths, a meditation deck, children's water play area, a spice and herb sanctuary and children's adventure area.

Wind down on Zen 14 (Level 14) at four different Jacuzzis, each with views of the city, garden or sunset. This level also contains six pavilions – one each for reading, meditation, tea drinking, teppanyaki, shabu shabu and yakiniku – as well as a sake lounge and bar.

Juvenate 24 (Level 24) is dedicated to wellness, with an exercise deck, thermal and chilled Jacuzzis, an aqua and indoor gym, relaxation pool, sunrise and sunset decks, wellness lounge, a Vichy Spa, steam capsule and much more.



Le Quest Sales Gallery

ONG&ONG delivers contemporary comfort at this Singaporean residential development. Singapore

Principal Leads and Team Members:
Teo Boon Kiat, Larry Wang Jinlu & Jaron Low Chon Hern *Interior Design*

Located within a leafy enclave in Bukit Batok, Le Quest adopted an overall design direction characterised by contemporary comfort. The project will feature interior design defined by timeless touches of modern luxury, where bold contrasting elements will undoubtedly breathe life into a mature residential estate.

Aligned with the development's landscape design, interior spaces will draw inspiration from the surrounding area – in particular the splendid backdrop provided by Xiao Guilin Quarry. Featuring a carefully curated material palette of natural and earthy tones, Le Quest's interior design will showcase a blend of soothing marble and timber surfaces.

By subtly bringing natural elements into the interior spaces, the designers were able to encapsulate the development's unique overall concept. Abundant natural light proliferates throughout, complementing the natural look of the materials – culminating in interior spaces that resonate with an undeniable sense of calm and serenity. Merging seamlessly with the verdant landscaping and the greenery of the surrounding area, Le Quest boasts a sophisticated, naturalistic ambience that reflects its sophisticated final design.

Within the development, residential units feature a distinctive modern design predicated towards contemporary lifestyles. Unit layouts were created to maximise functionality, with flowing spaces that are accentuated by a sleek interior aesthetic. The finishing touch for these elegant units is an array of first class conveniences and luxury fittings, resulting in homes that exude a sense of elegance and refinement.



Jurong Fire Station

ONG&ONG delivers modernised fire station to better serve the neighbouring community. Singapore

Principal Leads and Team Members:
Dr. Goh Chong Chia, N. Senthikumaran & Andrew Carino *Architecture*
Shahrom Bin Mohamed Ariff, Teh Yong Hui, Mike Choo & Elton Ng *Mechanical & Electrical Engineering*
Lim Yan Ping, Theeban Ganesh & Daniel Ang *Civil & Structural Engineering*

cr: SCDF/ Facebook



cr: SCDF/ Facebook



The new Jurong Fire Station (JFS) is a 5-storey facility serving the Jurong area. Relocated from its original site which had been in operation since 1975, the new station will be better prepared to meet present safety demands. Especially in light of recent growth within the Jurong Lake District and the Lakeside Industrial Estate.

Conceptualised using contemporary green design strategies, the new station achieved the BCA's (Building and Construction Authority) Green Mark Gold for its use of environmentally-friendly construction materials, water-efficient facilities and energy efficient systems – paving the way for other innovative emergency services facilities in the future.

The new station officially opened in November 2017, with ONG&ONG completing Architecture, Interior Design, MEP and C&S engineering work for the updated JFS. This included the construction of new public road extension and cul-de-sac at the new location and Singapore's first fireman's slide. The pioneering fireman's slide, which stretches from the fourth to first floor, was installed to enhance the overall safety of emergency services personnel.

The improved facility is larger than the station's former site, with space designated for emergency preparedness training.





Empire City Show Units

ONG&ONG Vietnam delivers a true diamond set in the heart of the city. **Ho Chi Minh City, Vietnam**

Principal Leads and Team Members:
Raymond Thai Don Thanh, Tran Vinh Phat & Le Huyen Anh *Interior Design*



Envisioned as a diamond in the heart of the city, Empire City is located in District 2 – a fast developing section in greater Ho Chi Minh City. Situated in a well connected urban node, the development is within easy reach of local places of interest, including Districts 1, 7, Binh Thanh District, as well as the city's buzzing central business district.

With gorgeous views spanning tranquil sections of the historic Saigon River, Empire City is poised to be instantly iconic within the Vietnamese market. Featuring four first class components - residential, office, retail and hospitality – this mixed-use development will bring a sense of cosmopolitan sophistication to the area.

Spaces within Empire City are all underscored by a simple maxim – Live Large. The underlying design concept is highlighted by stylish interiors paired with well-conceived space planning. The development's residential component in particular features an air of tasteful opulence and undeniable style.

Residential units have been created to suit a variety of personal styles and lifestyle pursuits. Imagined as the perfect location from which to fully experience the joys and benefits of modern metropolitan living.

Empire



Yen So Park Villas

Multi-generational and family living was the target for this ONG&ONG design. **Hanoi, Vietnam**

Principal Lead:
David Ching *Architecture*

Part of the Yen So Park development, the Villas encompass phases 3 and 4 of this ambitious project in Northern Vietnam. Comprising 71 lots stipulated for standard villas, along with a further 57 lots set aside for small villas, the project sets a new standard for luxury and sophistication.

Yen So Park was envisioned to cater to modern metropolitan lifestyles, where a carefully considered array of facilities ensure that residents will want for nothing. Homes within the development were designed with multi-generational families in mind. Featuring bright, spacious living areas, along with airy, sunlit bedrooms, each home will also contain expansive balconies and large windows offering sweeping views of the surrounding landscape.

Layouts within each home were simply configured for ease and efficiency, arranged to meet the needs of a range of age groups and lifestyles. Yen So Park homes will also boast a material selection that aims to complement modernist touches, particularly the development's striking façade design. The development's clean, modern aesthetic contrasts with the semi-classic and colonial homes which feature prominently in Northern Vietnam.

Yen So Park was envisioned to epitomise contemporary stylishness, and will undoubtedly appeal to families that desire an elevated sense of modern cosmopolitanism.



Kandis Residence

Elevated modern living becomes a reality at this new residential development. **Singapore**

Principal Leads and Team Members:
Andrew Lee, Ashvinkumar Kantilal, Benson Wee, Erick Suarez, Iwan Hartono & Michelle Magat *Architecture*
Shahrom Bin Mohamed Ariff & Chun Junyuan *Mechanical & Electrical Engineering*

Set within an idyllic location in Northern Singapore, Kandis Residence contains 130 condominium homes housed within 4 residential blocks – one 3-storey block, along with three 7-storey blocks. Boasting immaculate landscaping, the project was envisioned as "Homes in the Woods", where modern urban lifestyles can thrive within a green sanctuary.

A choreographed sequence of sensory spaces is revealed upon entering Kandis Residences. From an open, welcoming frontage, to the cascading water feature that serves as a backdrop for the clubhouse and drop-off area, the development is characterised by an abundance of lush natural touches. Residential blocks are neatly lined, punctuated by pockets of layered landscaping and a rich array of amenities, including a large lap pool and sunning lawn, a vertical

playground, and even outdoor fitness facilities. Much detail was infused into the interstitial spaces within Kandis Residence, creating a linkage of connected cosy inter-block courtyards, exercise lawns and lush, landscaped walkways.

Residential blocks feature modernist box frames that punctuate a simple, yet elegant façade. The development's overall colour scheme is subtle, with a warm, calming palette that helps further bolster this flourishing green oasis. Homes within Kandis Residence range from one to three bedrooms, each meticulously crafted with clean layouts and simple colour schemes. The bedrooms are mainly front facing, while kitchens and bathrooms overlook the inter-block courtyards, culminating in an upliftingly bright and airy home environment.





Knight Frank

SCA Design delivers stunning new offices to suit one of the biggest names in global real estate. **Singapore**

Principal Lead:
Kee Choon Yen *Interior Design*

Knight Frank



Knight Frank's new office in Singapore needed to reflect the firm's status as a global real estate consultancy. The firm's vision was for the workspace to embody its history and values, while also fulfilling the need for an agile new working environment that energised and inspired staff.

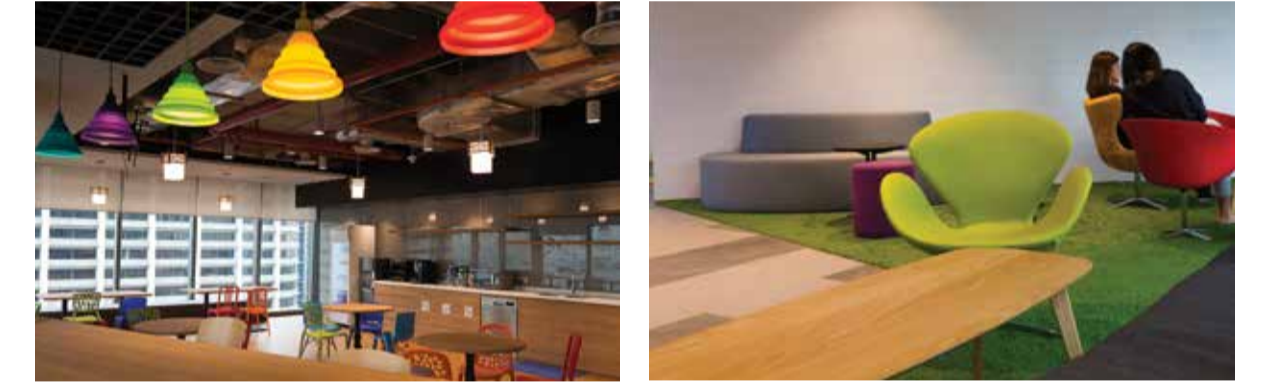
Working in tandem with Kemp & Associates, SCA Design relied on Workplace Strategy insights to produce a new work environment that is modern professionalism personified – bright and energetic, comfortable and warm, with a hint of playfulness.

Occupying almost 14,000 sq ft in Ocean Financial Centre, the dynamic office is designed with productivity in mind. Open and accessible, the space was conceptualised for Agile Activity Based Working arrangements. This allowed designers to integrate a variety of spaces to suit different working styles for both individuals and groups. As client engagement encompasses another chief function, the space also needed to leave a lasting, positive impression.

With a view overlooking the bustling Singapore CBD, the office features a bold entrance reception area defined by natural stone with accent highlights of gold-brushed stainless steel. It features a material palette of natural timber herringbone; warm, cosy echo panel wall cladding, and acoustic ceiling details of local Peranakan patterns.

The Knight Frank brand is reinforced through a History Wall that conveys the firm's rich heritage. Hints of the company's corporate colours help to invigorate the work environment, while a touch greenery in the form of hanging plants have been placed in breakout zones to enhance performance and promote staff and client wellness.

Agoda



Agoda

Another SCA Design project makes the workplace fun again. **Singapore**

Principal Leads and Team Members:
Elli Wang & Nikki Perlas *Interior Design*

Agoda's new Singaporean headquarters will serve as the company's base of operations in South East Asia. Therefore, it was imperative that the office successfully capture Agoda's identity as a leading online accommodation platform. One with worldwide reach, offering multilingual language support in almost every major global market.

With that in mind, the SCA team created a fun, lively working environment that would also incorporate elements of local culture. Spanning more than 18,000 sq ft on the 34th floor of Guoco Tower, the new office has been envisioned as Agoda's home in Singapore. The space is configured as an activity-based work environment - able to suit any working style at both a group and individual level.

With an eye on possible future expansion, the layout is also highly predicated on comfort and adaptability, where an increase in staff strength can be easily accommodated through a variety of flexible workspaces. The new office also features fun and leisure spaces including a relaxation and games room, which together with a café, will encourage staff to collaborate and socialise as a means to build camaraderie and team spirit.

Front office engagement with Agoda's clients and partners was another key consideration for the new office. Different brand touch points have been strategically woven throughout the office, each working to showcase Agoda's spirit and values. Accompanied by the company's five brand colours – red, yellow, green, purple and blue – which have been incorporated in numerous iterations throughout the space, subtly reinforcing the company's ethos and culture.





Toomato

IMMORTAL undertakes a full scale brand engagement consultancy with this F&B project. **Bangkok, Thailand**

Principal Lead:
June Lee Brand Engagement

Toomato was conceptualised as a fast casual diner that takes the concerns of today's diners to heart. Predicated on authenticity and health benefits, the enterprise places much emphasis on sustainability and transparency. Utilising a farm to table food supply chain, Toomato is geared towards millennials, urban aspirants and jet setters – knowledgeable, health-conscious consumers that have caught onto contemporary wellness trends.

IMMORTAL provided full-scale brand engagement for the project. Focus was placed on the wholesome goodness of Toomato's key offerings: fresh and nourishing Italian fare, together with quality cold-pressed juices that retain high nutritional value.

The name was tweaked from tomato, which is a base ingredient in Italian cuisine. The ease and adaptability of the name allows for numerous marketing and messaging possibilities. For example, the tagline "Almost too good to be true" simply rolls off the tongue. Drawing from the humble and unassuming domesticity of the Italian kitchen, where ingredients are laid out and prepared directly from the farmers' market, Toomato delivers the same harvest-freshness straight to the dining table for their guests to savour a healthy and truly satisfying dining experience. At the diner, mouthwatering photos of Toomato's pizzas, pastas and sweet treats are interspersed with over-sized text elaborating the brand's philosophy. The same aesthetic style is applied across all the brand's applications, delivering a consistent and holistic brand message.



PSskin



PS Skin

IMMORTAL crafts the brand narrative for a new line of dermatologist-formulated skincare products. **Singapore**

Principal Lead:
Stanley Tan Brand Engagement

Designed to suit time-starved modern lifestyles, PS Skin offers a premium range of skincare products developed by renowned dermatologist Dr. Priya Sen. Tapping into contemporary wellness trends, the project involved brand creation and packaging design.

PS Skin's visual brandmark comprises a logotype, while a molecular-inspired visual graphic and colourway system was created to complement the elegant brown-hued bottles and dispensers of the multi-product line-up. Conveying the simplicity of application, the brand engagement objective was to communicate the premium products' dermatologist formulated origins.

Every product offers more than one benefit to the skin, eliminating the need for multiple products or applications. Natural and plant-based ingredients have been used in the formulation of each product, which have been based on translational research with proven clinical and scientific evidence of efficacy. All products are dermatologist formulated and manufactured in Health Science Approved (HSA) pharmaceutical laboratories in Singapore.

Promising much more than a porcelain complexion and flawless skin, PS Skin emphasizes the importance of skincare. The key appeal for the new product line lies in its ability to suit different skin types and ages - embodying the ideal that true beauty and radiance are more than skin deep.



Engineering



Novena Church

Rankine&Hill delivers intricate engineering solutions for this gothic-inspired church. **Singapore**

Principal Leads and Team Members:
Tan Peck Khoo, Shahrom Bin Mohamed Ariff,
Lam Siew Ping & Brandon Li
Mechanical & Electrical Engineering

Located along Thomson Road, Novena Church is one of Singapore's most iconic and storied places of worship. CGN Architects crafted a striking Gothic-style building, enlarging the premises to better suit present-day purposes.

Revamping the church proved particularly challenging from an M&E standpoint. Preservation of key components and structures meant that the project's M&E design needed to be carefully incorporated to maintain the integrity of much of the original site. From fire protection sprinklers and air-conditioning systems, to the introduction of the new main prayer hall, flower dome and limestone pillars, engineers had to ensure that the project's intricate details would be adequately supported and updated in accordance with the architect's design intent.

The final design of the restored Novena Church features a new section that can easily accommodate up to 1,500 people, allowing them to worship in air-conditioned comfort. Interior ventilation was improved and made to fully comply with SCDF emergency safety requirements. The final design also features a new three-storey building which will house a 200-seat auditorium, together with a basement canteen and underground parking facilities. All main areas of the restored church are fully air-conditioned to ensure greater overall user comfort. This together with the inclusion of a new basement canteen and kitchen facilities completes an array of modern conveniences for the updated church.



Royal Square

Rankine&Hill completes engineering work for an innovative mixed-use facility. **Singapore**

Principal Leads and Team Members:
Tan Peck Khoo, Shahrom Bin Mohamed Ariff,
K Mohamed Jawith & Chng Wei Xiang
Mechanical & Electrical Engineering

Situated in the upcoming Novena Healthcity, Royal Square is a mixed-use development designed by Consortium 168 Architects. The innovative 33-storey building houses a total of 51 commercial units, 171 medical suites, as well as a 250-room hospitality component that is operated as Courtyard Hotel by Marriott.

Royal Square was conceptualised as a sustainable building geared towards promoting health-consciousness and contemporary wellness ideals. With green design also a major consideration, the project contains features such as the Green Corner - a cutting-edge interactive video display system of digital posters and screens that will showcase the various green strategies housed in the building. End-users will also be able to track private energy and water usage through a series of monitors that will help determine usage patterns for improved efficiency and cost-savings.

The hotel component also incorporates numerous green designs. These include energy saving and low noise DC fan coil units for hotel guest rooms, a condensate recycling system, a rainwater harvesting system, an air-source heat pump system for hot water generation, as well as a range of UV lights and filters that will greatly enhance indoor air quality. Finally, to reduce and recycle food waste, an eco digester that uses microbes to recycle the waste was also installed.

Additional green features include the use of zero ODP refrigerants with advanced chilled water treatment for the air-conditioning system, along with a musical staircase that will link the building's side entrance to neighbouring Velocity @ Novena.

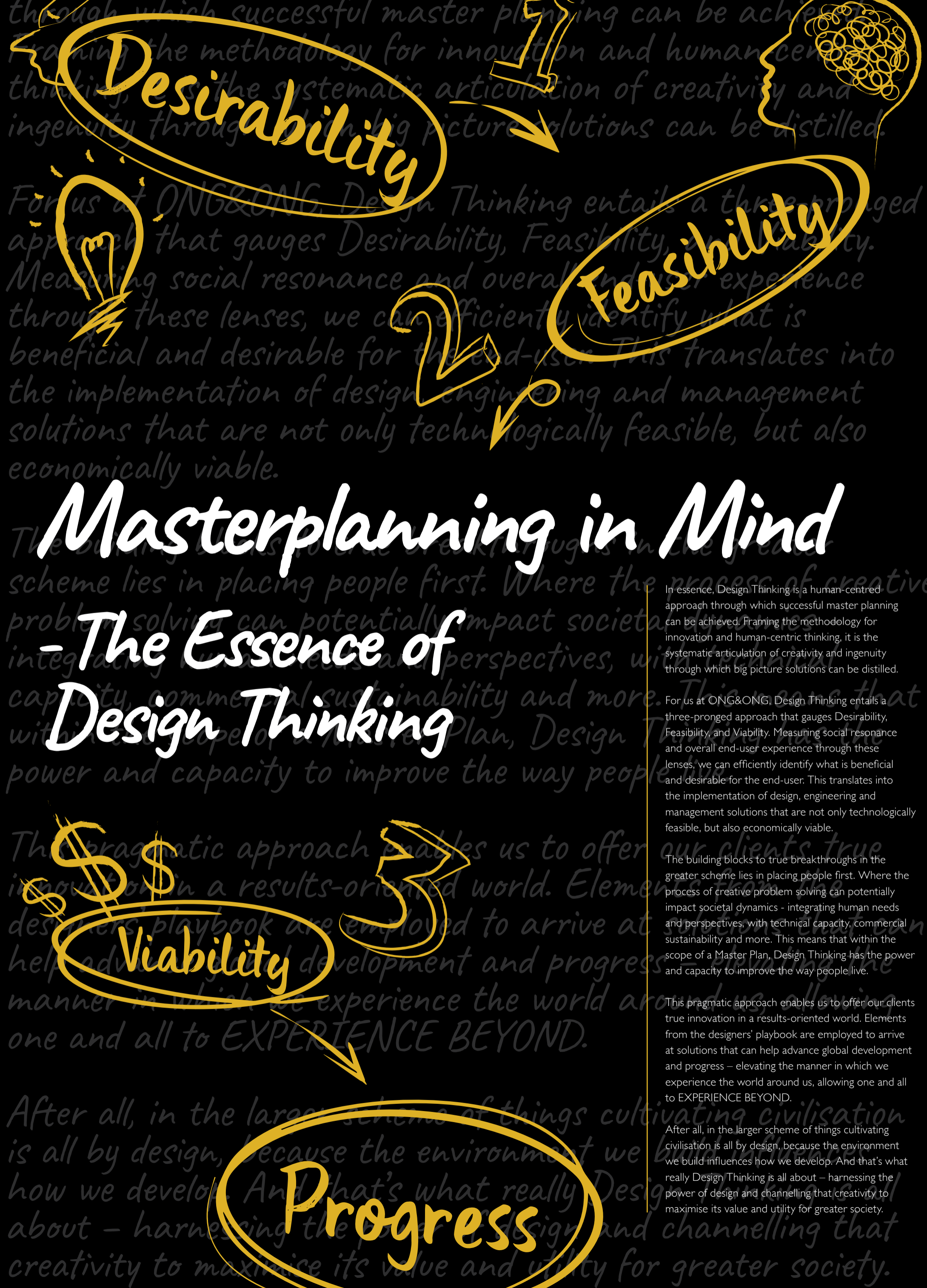
In essence, Design Thinking is a human-centred approach through which successful master planning can be achieved. Framing the methodology for innovation and human-centric thinking, the systematic articulation of creativity and ingenuity through which big picture solutions can be distilled.

For us at ONG&ONG, Design Thinking entails a three-pronged approach that gauges Desirability, Feasibility, and Viability. Measuring social resonance and overall end-user experience through these lenses, we can efficiently identify what is beneficial and desirable for the end-user. This translates into the implementation of design, engineering and management solutions that are not only technologically feasible, but also economically viable.

The building blocks to true breakthroughs in the greater scheme lies in placing people first. Where the process of creative problem solving can potentially impact societal dynamics - integrating human needs and perspectives, with technical capacity, commercial sustainability and more. This means that within the scope of a Master Plan, Design Thinking has the power and capacity to improve the way people live.

This pragmatic approach enables us to offer our clients true innovation in a results-oriented world. Elements from the designers' playbook are employed to arrive at solutions that can help advance global development and progress - elevating the manner in which we experience the world around us, allowing one and all to EXPERIENCE BEYOND.

After all, in the larger scheme of things cultivating civilisation is all by design, because the environment we build influences how we develop. And that's what really Design Thinking is all about - harnessing the power of design and channelling that creativity to maximise its value and utility for greater society.



Masterplanning in Mind

- The Essence of Design Thinking

In essence, Design Thinking is a human-centred approach through which successful master planning can be achieved. Framing the methodology for innovation and human-centric thinking, it is the systematic articulation of creativity and ingenuity through which big picture solutions can be distilled.

For us at ONG&ONG, Design Thinking entails a three-pronged approach that gauges Desirability, Feasibility, and Viability. Measuring social resonance and overall end-user experience through these lenses, we can efficiently identify what is beneficial and desirable for the end-user. This translates into the implementation of design, engineering and management solutions that are not only technologically feasible, but also economically viable.

The building blocks to true breakthroughs in the greater scheme lies in placing people first. Where the process of creative problem solving can potentially impact societal dynamics - integrating human needs and perspectives, with technical capacity, commercial sustainability and more. This means that within the scope of a Master Plan, Design Thinking has the power and capacity to improve the way people live.

This pragmatic approach enables us to offer our clients true innovation in a results-oriented world. Elements from the designers' playbook are employed to arrive at solutions that can help advance global development and progress - elevating the manner in which we experience the world around us, allowing one and all to EXPERIENCE BEYOND.

After all, in the larger scheme of things cultivating civilisation is all by design, because the environment we build influences how we develop. And that's what really Design Thinking is all about - harnessing the power of design and channelling that creativity to maximise its value and utility for greater society.

Specialist Studios: All The Degrees In 360

The adage, "greater than the sum of its parts", explains ONG&ONG to a certain extent. But it does not fully encapsulate what the firm is all about. After all, every one of our studios, stationed in our local offices around the world, specialises in a specific aspect of the design and construction process. Each specialisation brings different sets of expertise to the table. And while they integrate seamlessly to delivery the ONG&ONG 360 SOLUTION, each of our award-winning studios are singularly outstanding in their own right.



Experience Design

- User Experience Strategy
- Service Design Consulting
- Design Thinking
- Ethnographic Research

Experience Design is about evolving the manner in which we interact with the world around us. It is about altering human experiences through the process of Design Thinking, where we imagine and conceive in terms of utility to better serve our needs. Human experiences are in constant flux, where improvement, progress and advancement unfold and develop over time - ultimately leaving us better positioned than before.

At ONG&ONG, we believe in Design Thinking and the impact that it brings. And for our award-winning Experience Design team the goal is to find ways to elevate and improve an experience or a process. Whether it's a minor tweak or something completely reimaged, all the projects we work on have one thing in common: making the end-user experience better.



Brand Engagement

- Market Insight
- Brand Audit
- Brand Strategy
- Brand Expression
- Brand Management
- Environmental Branding

Brand Engagement is an analytical process, but also one that requires much imagination. It is about crafting experiences that foster relationships between brands and consumers. With over 27 years of experience and a client list brimming with household names, IMMORTAL is renowned for its branding programmes that have helped many clients grow their businesses. Offering a comprehensive suite of services including Market Insight, Brand Audits, Strategy, Expression, and Management, IMMORTAL is committed to helping any brand create an authentic and enduring identity.



www.oxd.ong-ong.com



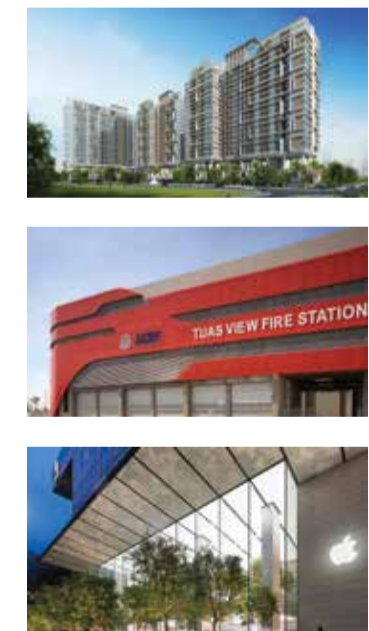
www.immortal.com.sg

Engineering

- Mechanical
- Electrical
- Civil
- Structural
- Fire Safety
- Environmental

Beneath the veneers of colours, curved lines and textures of all dazzling designs are the hidden machinery and mechanisms that make everything possible. Inventive engineering becomes the basis through which creativity can be transformed from imagination and turned into living, breathing reality.

With decades of experience in the industry, Rankine&Hill consultants have collaborated on some of Singapore's most iconic designs. From Mechanical & Electrical to Civil & Structural, as well as Fire Safety and Environmental solutions, we continue to deliver a full-range of comprehensive engineering solutions that bring projects to fruition.



Project Management

- Project Management
- Project Development
- Construction Management
- Cost Management
- Place Management

Ensuring projects are well organised and cohesively executed are the fundamentals of our business. But it's more than just putting the right people in touch or assembling the ideal team. Our goal is to connect the dots and tie up the loose ends to make sure projects are as easy and cost-effective as possible.

The process is a practical one. First, the objectives and parameters of a given project are properly ascertained. Following which, development is carefully planned and mapped, all in an effort to ensure complete alignment and efficiency throughout the construction phase. For us, success means a stress-free experience for our clients.

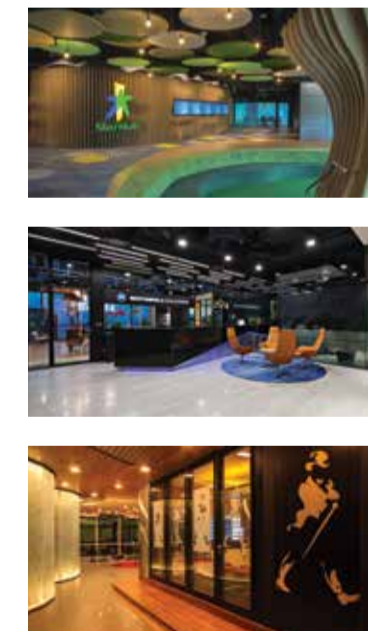


Workplace Interiors

- Building Studies
- Workplace Studies
- Space Planning
- Interior Design
- Project Management
- Sustainability
- Turn Key Solutions

The perfect corporate interior goes beyond simply creating functional workspaces. Although aesthetic quality and style are a must, the environment must be synergistic and inspirational. After all, productivity is the name of the game.

At SCA Design, we go beyond traditional interior design, altering the notion of what a working environment should encompass. Combining in-depth building and workplace studies we determine the ideal parameters for project management. In addition, with input from clientele and the end-user, space planning is used in tandem with flawless interior design, resulting in turn key work spaces that exemplify what the modern office should be.

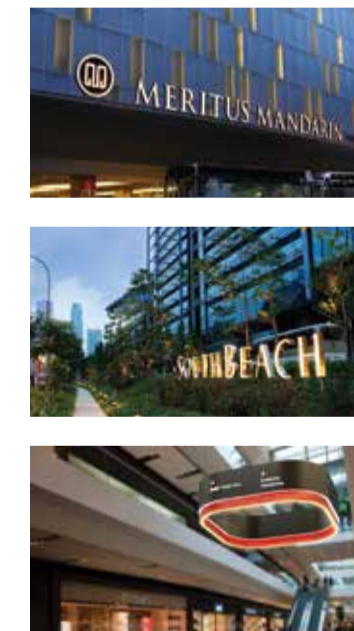


Environmental Wayfinding

- Planning and Analysis
- Wayfinding Strategy
- Signage System and Design
- Environmental Graphics

Effective wayfinding means delivering assurance at every point of a journey. It is a system of signs and symbols to enable easy navigation. No matter the complexity, the ONG&ONG wayfinding studio's primary objective is to make every space more user friendly.

Wayfinding has the capacity to optimise and enhance the built environment, improving circulation, connectivity and use of space.



Architecture

- Master Planning
- Architecture
- Ideate and Create
- Conceptualisation & Analysis
- Research & Development
- Space Planning

For nearly half a century, ONG&ONG has been synonymous with architectural excellence. Regardless of scale or typology, our extensive experience and repertoire of knowledge has seen the firm deliver countless projects of the highest calibre.

Today, the firm operates in 9 countries around the world, as we build on a tradition of excellence, working to grow our reputation for dependability and innovation in the region and beyond - delivering a comprehensive range of services that includes individualized expertise in Master Planning, Brand Engagement, Experience Design, Interiors, Landscape and Lighting.

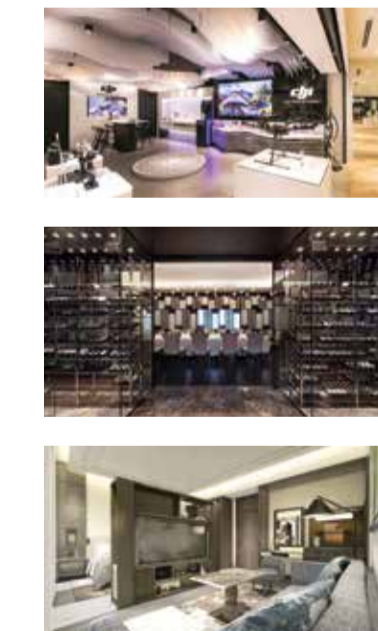


Interior Design

- Advisory & Consultancy
- Space Planning
- Test Fit
- Feasibility Study
- Master Design Guidebook
- Turn Key Solutions

Residential or commercial, public or private, institutional or infrastructural, interior design is crucial no matter the project. From forming the heart of a home to setting the tone for a corporate or professional space, the potential of a space is realised through interior design.

Be it functionality or comfort, on luxury or utility, ultimately the manner in which we conceive a space influences how it will be utilised. At ONG&ONG our interior design experience runs the gamut of typologies and scales, with award-winning projects the world over as proof of our ability to truly define any space.



Landscape

- Master Planning
- Space Planning
- Blue & Green Solutions
- Sustainability
- Playground Design

The modern built environment is increasingly characterised by the integration of nature. Regardless of typology and scale, projects today make it a point to include greenery where possible.

At ONG&ONG, our track record of award-winning projects underscores the importance we place on landscape design. From biophilic environments and naturalistic designs, to the creation of sustainable microclimates, our landscape team endeavours to find the optimum levels of greenery to benefit and enhance the built environment.

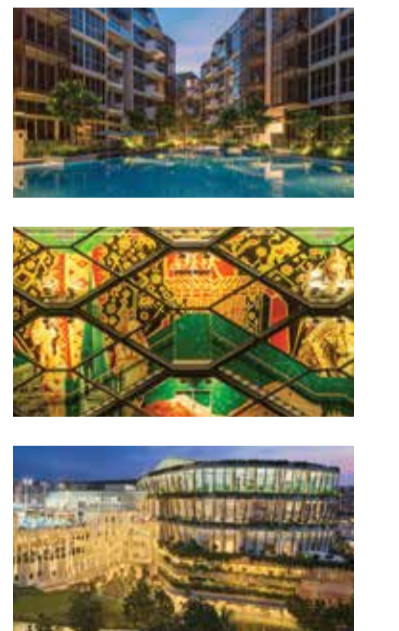


Lighting

- Architectural Lighting
- Equipment Cost Control
- Operational Cost Control
- Lux Level Calculations
- Lighting Controls
- Lighting Audits

Lighting design is crucial, yet too often overlooked. Lighting can highlight and accentuate any space. It can alter the ambience or mood of a given setting, bringing life, warmth and more to any environment. Lighting has the capacity to transform a solid project into a superb one, where just the right mix of shadow, light and colour can easily augment the end-user experience.

Bright or low-key, fluorescent or neon, simple or intricate, we at ONG&ONG fully appreciate how crucial a project's lighting design can be.



www.rankine-hill.com



www.proj-innovations.com



www.sca-design.com



www.immortal.com.sg



www.ong-ong.com

Singapore & Regional Affairs

Catch up on all things ONG&ONG as we give you the latest news and highlights from our local offices the world over.



BCA Job Shadowing Programme 2018

ONG&ONG was honoured to be appointed as one of the firms that will participate in the BCA Job Shadowing Programme 2018. The initiative brings academia and the professional world together, giving students the chance to experience professional life in the AEC industry firsthand.

Positions will be made available across the different arms of the industry, where students pursuing courses in design, construction, engineering and management will receive professional guidance and mentorship.



The Pursuit of Knowledge – BCA Scholarship Awards 2017

Singapore's Building and Construction Authority (BCA) has long supported academic pursuits and continued education within the local AEC industry. The annual BCA Scholarship Awards once again saw outstanding individuals provided the opportunity to further their knowledge and skills. Please join us as we toast Ryan Chee Wei Shen and Tay Jie Li, whose dedication and talents are fully deserving of this wonderful honour.



Boon at the Leaders in Science Forum 2017

The annual Leaders in Science Forum brings together the best and the brightest from different fields. Inviting industry leaders, experts, innovators and pioneers, the event is centred on the exchange of knowledge and information.

ONG&ONG's Group Executive Chairman, Ong Tze Boon, was invited as a guest for the 2017 edition. Speaking at the forum, the Chairman touched on a range of subjects including entrepreneurship, innovation and leadership, as he shared anecdotes and wisdom accumulated from his vast experiences and endeavours.



Identifying Tomorrow's Leaders

The annual Singapore Institute of Architects (SIA) 20 under 45 list presents a selection of the design industry's outstanding rising talents. Now in its 8th year, the list has become a prestigious honour that has helped launch some of the biggest names and personalities in the local design scene.

Individuals are handpicked by a jury of prominent members of the design fraternity - established names that are able to recognise the necessary ingredients and pedigree for future success. Not for the first time, ONG&ONG's Group Executive Chairman, Ong Tze Boon, served as a juror for the 20 under 45, where his eye for talent once again served to give recognition to the future innovators and drivers of our industry.



SIA Architour – The Heartbeat @ Bedok Edition

The innovative community building has been receiving much notice and praise since it officially opened its doors to the public. The ONG&ONG team that completed the Heartbeat @ Bedok have been receiving much acclaim, with plenty eager to learn more about the inner workings of this groundbreaking facility.

Hosting an edition of the Singapore Institute of Architect's (SIA) Architours - a long established initiative that gives members of the public a chance for an intimate look at local architectural gems - members of the Heartbeat design team provided background and first hand insight into one of Singapore's most talked about new projects.



Opening Ceremony – More from the MRT Downtown Line

Transportation infrastructure is one of our specialties. Taking great pride in our many contributions to Singapore's impressive MRT network, it is the firm's hope that we can continue lending a hand toward national development – continuing to strive for advancement and progress in Singapore, Asia and beyond.

Late October 2017 saw the official opening of the newest stations along the MRT Downtown Line, with both ONG&ONG and Rankine&Hill completing design and engineering work on a number of key stations.



A Hand for Higher Education

Supporting educational pursuits, particularly within the realm of the AEC industry, is a longstanding mission for ONG&ONG. It is our belief that inspiration is integral to innovation, which is why we host students and young designers across the region opportunities with tours of our offices and projects.

In October last year, ONG&ONG's Singapore headquarters hosted a group of young men and women from Binus University in Indonesia. Part of the firm's commitment to forge strong local ties within the different cities and communities we are proud to call home, we will continue to champion and support aspiring design professionals by giving them the chance to learn and grow.



Rankine&Hill Visits Novena Church

The reopening of one of Singapore's most cherished places of worship was eagerly anticipated to say the least. Revamping the once aging Novena Church proved to be a conservation and modernisation project of immense complexity. Serving as M&E consultants, R&H worked closely with the design team from CGN Architects, resulting in a magnificent restoration of the gothic-styled landmark.

Shortly after it reopened to the public, a site tour was organised to give members of the ONG&ONG family a chance for an in depth look at the revitalised church. Led by the engineering team responsible for the project, those lucky enough to save themselves a space were treated to an insider's look around Novena Church – freshly restored to its former glory.



Professional Engineers Board – One of our Own Joins the Ranks

Receiving recognition from your fellow professionals is always an honour. Board positions are often a benchmark of success, where expertise, experience and leadership are the foremost considerations. Therefore, it is our honour to announce that R&H Deputy CEO, Shahrom Bin Mohamed Ariff has been named to the Professional Engineers Board – a testament to his reputation and track record as a leader in the field of engineering.



Conquering New Peaks

At the ONG Foundation, we believe in championing those in pursuit of higher ideals. Through our recent patronage of the NUS and SUTD mountaineering programmes, we were able to support the aspirations and desires of promising young men and women – giving them the support needed to successfully summit the Ong Teng Cheong Peak, and the soon to be confirmed Ong Siew May Peak. Their hard work, dedication and sacrifice have inspired us to scale new heights, and strive bravely towards vast new horizons.



Official Business at the Mid-Year Review

Twice a year, ONG&ONG's Singapore Headquarters welcome directors and team leaders from our local offices around the world for a powwow on the bigger picture facing the firm. The event is intended to enhance alignment and direction amongst the firm's leadership, with the captains and leaders taking stock of key issues and matters, to dictate the outlook and trajectory that sets the tone for the rest of us to follow.



Field Trip: ONG&ONG Showcases the Heartbeat @ Bedok

It's safe to say that word has gotten out about the Heartbeat @ Bedok. The groundbreaking integrated facility has started to gain recognition outside of Singapore, with plenty eager to find out more about this innovative community building.

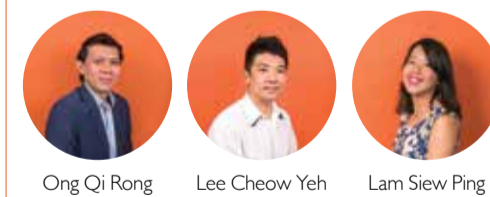
Welcoming a chance to share knowledge and insights with the greater design community, ONG&ONG hosted a team of visiting designers from Qingdao, China. Guests were brought on a guided tour of the Heartbeat @ Bedok, where they got a chance to inspect the highly acclaimed project.



On the Cutting Edge – The Design Technology Workshop

The start of 2018 saw the firm's Design Technology (DT) department pick up right where they left off. Responsible for keeping ONG&ONG at the cutting edge, the DT team held a comprehensive 2-day workshop.

On 9th and 10th January, staff members from across the region gathered in Singapore to attend workshop sessions. Showcasing the latest additions and developments in the firm's DT arsenal, those in attendance were introduced to tools that will help further enhance design and work processes.



Ong Qi Rong Lee Cheow Yeh Lam Siew Ping

Our Young Talents Under 40

The Singapore Business Review has conferred recognition upon three individuals at ONG&ONG, namely Ong Qi Rong and Lee Cheow Yeh as well as Rankine & Hill's Lam Siew Ping. These relatively young stars have displayed exemplary attributes in their respective disciplines. Now officially amongst Singapore's finest talents, their achievements and extensive portfolios stand them in great stead in the AEC industry. We look forward to more great endeavours from them.



Celebrating with ONG&ONG Vietnam

Our dedicated and talented team in Vietnam have continued to set the pace for the rest of the firm. With another year of successes and triumphs under their belt, ONG&ONG Vietnam gathered for an enchanting evening of fine dining and festivities at an inaugural Dinner and Dance event.

Dressed to the nines and looking fine, all of ONG&ONG Vietnam came together to commemorate the unbelievable strides that they have taken over the last few years. It was a fitting honour for the many people whose diligence and sacrifice have enabled the firm's success in Vietnam.



Hello 2018! The start of a new year brings reflections, as we think back on the experiences of the last year, while also keeping an eye on the future and the year ahead. By all accounts, facts and figures, last year was positive. And while many in the industry were adjusting and transitioning, ONG&ONG's foresight has allowed us to stay well ahead of the curve.



In the previous edition of ONG&ONG 360 News, we touched on the fundamentals of nation building, taking a look at the vital role transportation infrastructure plays in the course of national development. In this issue, we continue on that theme with an introduction to the tenets of Design Thinking - the building blocks of Master Planning. After all, it is our belief that cultivating civilisation is all by design, because the environment we build influences how we develop.

We're also delighted to showcase a diverse array of projects from all over the Asian region. A wonderful mix of the firm's latest offerings that will no doubt highlight the strength and versatility that ONG&ONG has across disciplines. It is also a testament to the highest standards of service and quality of design that all our local offices around the world consistently provide for our clients.

So as we continue to broaden our frontiers, we bear in mind that we are at heart a Singaporean firm with true global sensibilities, and your ideal local partner who truly knows Asia.

Vision

Experience Beyond

Purpose

To Improve the World in which We Live

Role

To Enhance the Well-being of Inhabitants through excellence in Sustainable Design

BI-ANNUAL NEWSLETTER • MARCH 2018 • MCI (P) 117/11/2017


360 NEWS is published by ONG&ONG Group Pte Ltd. All rights reserved. No part of this newsletter may be reproduced without the permission of ONG&ONG Pte Ltd. Opinions expressed in 360 NEWS are those of the writers and are not necessarily endorsed by ONG&ONG Group Pte Ltd. ONG&ONG Group Pte Ltd accepts no responsibility for unsolicited manuscripts, transparencies or other material.

Address all editorial and business correspondence to

ONG&ONG Group Pte Ltd

Corporate Communications Department
510 Thomson Road
#11-00 SLF Building
Singapore 298135

You are receiving this newsletter because you have been involved with ONG&ONG in the past. If you feel you are receiving this newsletter in error, please email corpcomms@ong-ong.com to unsubscribe from our mailing list.

 In line with our corporate strategy of sustainable design, this newsletter is printed on PEFC certified paper.

ONG&ONG Group Pte Ltd
510 Thomson Road, #11-00
SLF Building, Singapore 298135
t +65 6258 8666
f +65 6259 8648

ONG&ONG Limited
No 45/5 Unit-A, Kabar Aye Pagoda
Road, 9th Ward Mayangone T/S,
Yangon, Myanmar
t +95 97822 25714

ONG&ONG Pte Ltd
510 Thomson Road, #11-00
SLF Building, Singapore 298135
t +65 6258 8666
f +65 6259 8648

ONG&ONG Design Co., Ltd
75 / 39 Level 12A Richmond Office
Building, Sukhumvit Soi 26, Klongton,
Klongtoey, Bangkok 10110, Thailand
t +66 2259 8917-8

ONG&ONG Co Ltd
159 Phan Xich Long Street,
Ward 7, Phu Nhuan District,
Ho Chi Minh City, Vietnam
t +84 28 3517 8526
f +84 28 3517 8516

ONG&ONG, Inc.
Level 12 Robinsons Summit Center
6783 Ayala Avenue Makati City,
Manila Philippines, 1226
t: +632 479 1780

**ONG&ONG 360
Consultancy Sdn Bhd**
Unit 1B-08-1, Blok 1B, Plaza Sentral,
Jalan Stesen Sentral 5,
50470 Kuala Lumpur, Malaysia
t +60 3 2272 2360
f +60 3 2272 3360

Project Innovations Pte Ltd
510 Thomson Road,
#09-00 SLF Building,
Singapore 298135
t +65 6255 3966
f +65 6255 5966
www.proj-innovations.com

**ONG&ONG (Chengdu)
Consultants Co. Ltd**
Unit 802, 8F, Tower 1, Raffles City
Chengdu, No.3, Section 4, South
Renmin Road, Chengdu, 610041,
People's Republic of China
t +86 28 6510 0866
f +86 28 6510 0868

**Rankine&Hill
(Singapore) Pte Ltd**
510 Thomson Road,
#07-00 SLF Building, Singapore 298135
t +65 6278 9588
f +65 6273 5290 (M&E)
f +65 6339 9313 (C&S)
www.rankine-hill.com

**ONG&ONG (Chengdu)
Consultants Co. Ltd - Shanghai**
No. 2-24, 433 Nong Yu Yuan Road,
Building 9, Room 325
Shanghai, 200040,
People's Republic of China
t +86 21 6381 5800
f +86 21 5273 5213

**Rankine&Hill
(Vietnam) Co Ltd**
159 Phan Xich Long Street,
Ward 7, Phu Nhuan District,
Ho Chi Minh City, Vietnam
t +84 28 3517 1633
f +84 28 3517 1655

**ONG&ONG Designs
(India) Pvt Ltd**
M/S WeWork BKC, India
C-20, G Block, Bandra-Kurla Complex
Mumbai MH 400051, India
t +91 022 4445 1148

SCA Design Pte Ltd
510 Thomson Road,
#06-01 SLF Building,
Singapore 298135
t +65 6253 4886
f +65 6255 4568
www.sca-design.com

ONG&ONG Design LLC
4th Floor Monnis Building lh Mongol
Uls Street 15th khoroo Khan-Uul
District Ulaanbaatar 17011, Mongolia
t +976 7575 6515
f +976 7575 6525

**IMMORTAL
The Design Station Pte Ltd**
510 Thomson Road,
#11-00 SLF Building,
Singapore 298135
t +65 6227 9406
f +65 6259 8648
www.immortal.com.sg

PT ONG and ONG
Grha Niaga Thamrin 1st Floor Unit A1
Jl. K.H. Mas Mansyur
Kebon Melati, Tanah Abang
Jakarta Pusat -10230 Indonesia
t +62 21 2139 2269
f +62 21 2139 2309

   
www.ong-ong.com

SINGAPORE
CHINA
INDIA
INDONESIA
MALAYSIA
MONGOLIA
MYANMAR
PHILIPPINES
THAILAND
VIETNAM

