

360 NEWS

Dinamik
Динамизм
活力
ความคล่องตัว
Dinamis
SỰ NĂNG ĐỘNG

Award-Winning Excellence
Workplace Transformation
Smart Asian Cities, Global Impact
Mobilising Future-Ready Solutions

NOVEMBER 2024 • MCI (P) 017072024



REDEFINING
URBAN LANDSCAPES

EXPERIENCE
BEYOND.

Steering the Group Forward

Big on recognising and encouraging progress, ONG&ONG recently promoted employees within the firm and hired new talent to join the Group. As growth is pivotal to the advancement of the company and its people, we take this opportunity to congratulate them. We anticipate these new talents to guide the Group forward as we strive to achieve new milestones that will better serve communities around the region.



Christian Ceasar Santos Pineda
Associate Director, Landscape
Studio Landscape 2
ONG&ONG
Singapore



Elita Ong Mei-Lin
Associate Director, Architecture
Studio 7B
ONG&ONG
Singapore



Telang Priti Anand
Senior Associate, Architecture
Studio 1
ONG&ONG
Singapore



Anthony Gaza Bulilan
Associate, Architecture
Studio 9
ONG&ONG
Singapore



Elizabeth Danielle Hardie
Associate, Architecture
Studio 7B
ONG&ONG
Singapore



Chua Soon Ching
Associate, Architecture
Studio 9
ONG&ONG
Singapore



Elmer Jay Caparros Matriano
Associate, Architecture
Studio 9
ONG&ONG
Singapore



Gina Reniedo Bondoy
Associate, Architecture
Studio 9
ONG&ONG
Singapore



Giovanni Alarcon Bautista
Associate, Architecture
Studio 9
ONG&ONG
Singapore



Jojo Leonardo Salvador
Associate, Architecture
Studio 9
ONG&ONG
Singapore



Ng Chai Wei
Associate, Architecture
Studio 9
ONG&ONG
Singapore



Oliver Imperial Reyes
Associate, Architecture
Studio 9
ONG&ONG
Singapore

ONG&ONG Vietnam Secures a BCI Asia Top Ten Architects Awards

Vietnam's most prolific property developers, architecture firms, and contractors were feted at the annual BCI Asia Awards ceremony on May 31. ONG&ONG Co. Ltd was named as a BCI Asia Top 10 Architect for the year 2024. The firms were chosen based on the greatest aggregate value of projects under construction during the last full calendar year, weighted by the extent of their sustainability efforts. Held at the Sheraton Saigon Hotel & Towers, the Awards also showcased regional winners and merit recipients of Asia's leading green design competitions, the FuturArc Prize and BCI Interior Design Awards. The competition helps inspire and elevate the creativity and spirit of sustainability in architecture professionals and students alike.



Read more:



BCI Asia Awards Singapore: ONG&ONG Clinches Top 10 Architects Awards

ONG&ONG has once again solidified its reputation as a leader in the architectural industry by being named one of the top ten architects at the prestigious BCI Asia Awards Singapore 2024. This accolade recognises the firm's outstanding contributions to architecture and design across the region, highlighting its commitment to innovation, sustainability, and excellence. Known for its forward-thinking approach, ONG&ONG continues to push the boundaries of architectural design. This recognition by BCI Asia is a testament to ONG&ONG's dedication to shaping the built environment in meaningful and impactful ways. The BCI Asia Awards Singapore was held at the Fairmont Hotel on 28 June 2024.



Archello's "100 Best Architecture Firms in the World"

Architecture is the nexus between culture, society, and history, reflecting humanity's quest for advancement. Leading practices worldwide strive for resilient design solutions that enhance lives and endure. Archello's list of the top 100 firms highlights those redefining the limits of architecture. Winning a spot in this esteemed listing is ONG&ONG, with the firm recognised for excellence and innovation in design and engineering. The list is curated through a multifaceted selection process, considering the number and quality of projects uploaded and featured on Archello, material innovation, sustainability, and design quality, along with success in Archello Awards.

Read more:



IMMORTAL Strengthens Ties and Collaborations in Vietnam

Brand Director Stanley Tan and Senior Creative Consultant June Lee of IMMORTAL from the ONG&ONG Group delivered a presentation showcasing a selection of brand design projects from across the globe at the Hanoi University of Civil Engineering (HUCE) in Vietnam. They were there to build ties and explore collaborations at the Design Alliance Asia's (tDAA) annual meeting, Asia Meets, held from Sep 24 – 28 2024. The event was attended by local design and manufacturing industry counterparts, engineering and design students, and participants from across the region. Attendees explored the design impact that designers across the region and beyond are making. Asia Meets also included project sharing sessions and exhibitions, the opening of the N Gallery of Design Innovation at HUCE, visits to art galleries, an architecture heritage walk, and a gala dinner celebrating the 30th anniversary of the Haki Group.

Rankine&Hill Wins Merit Award at the ACES Design Excellence Awards

Rankine&Hill received the Merit award under the ACES Design Excellence Award 2024 for their Singapore project – Yusuf Ishak Secondary School. The award was accorded by the Association of Consulting Engineers Singapore (ACES) at their prestigious ACES Design Excellence Awards during the organisation's 53rd Anniversary Gala Dinner on 13 August 2024. This award recognises the firm's commitment to design excellence, technical prowess, and culture of innovation.



Read more:



ONG&ONG, Recognised as a Disruptor, Gets Special Mention for Digital Transformation at the BCA Awards 2024

We are proud to be recognised in a Special Mention for Digital Transformation at the BCA Awards 2024, presented by Ms. Indraneel Rajah, Minister in the Prime Minister's Office and Second Minister for Finance and National Development. By embracing the vision of being a disruptor, the Group has successfully implemented digital technologies that have not only enhanced productivity and workflow, but also ensured that the business remains agile and future-ready, and this accolade underscores our dedication to advancing innovation and excellence for the built environment sector. Our heartfelt congratulations to all award recipients for their outstanding contributions toward shaping the future.



Read more:



Awards

As a holistic 360 solution consultancy excelling in infrastructure, commercial and high-density living projects, ONG&ONG's motto, We Understand Asia, allows us to create unique and inspiring spaces, while setting new benchmarks for the AEC industry as we improve the built environment for communities. Our projects have received accolades for transforming lives and evolving the urban ecosystem. Here are some of the awards we won in 2024.



emblems of excellence



Hitachi Vantara
Office Interior
Asia Pacific Property Awards,
Office Interior, Singapore

Principal Lead and Team Members:
Kee Choon Yen, Ho Kok Yuen,
Norman Chan and Albert Chin
Workplace Interior



Changi Airport Terminal 3 Central, Lotte Duty Free
Project Management
Asia Pacific Property Awards,
Commercial Redevelopment/
Renovation, Singapore

Principal Lead and Team Members:
Paul Roger Lim, Michelle Wong,
Linda Khor, Cheng Ming Wei,
Nobleza Naomi Gwyneth Veralló
and Werty Ho Project Management



Holiday Inn Express & Suites Singapore Novena
Architecture, Interior Design
Asia Pacific Property Awards,
Hotel Interior, Singapore

Principal Leads and Team Members:
Kunjanto Slamet and Giovanni Alarcon Bautista Architecture

Teo Boon Kiat, Amy Ling and Ricardo Esguerra Ugay Interior Design



Artyzen Singapore
Architecture, Interior Design
Management, Landscape
SIA Architectural Design Awards,
Hotel Category, Merit

Principal Leads and Team Members:
Steven Low, Michelle Gouw and
Cinco Bielza Gregorio Architecture

Lena Quek Landscape

Paul Lim and Teo Boon Kiat
Interior Design Management



Artyzen Singapore
Architecture, Interior Design
Management, Landscape
Singapore Good Design Award,
Architecture

Principal Leads and Team Members:
Steven Low, Michelle Gouw and
Cinco Bielza Gregorio Architecture

Lena Quek Landscape

Paul Lim and Teo Boon Kiat
Interior Design Management



Artyzen Singapore
Architecture, Interior Design
Management, Landscape
Su Award, Urban Regeneration
Category, Top 10 Winner

Principal Leads and Team Members:
Steven Low, Michelle Gouw and
Cinco Bielza Gregorio Architecture

Lena Quek Landscape

Paul Lim and Teo Boon Kiat
Interior Design Management



Artyzen Singapore
Architecture, Interior Design
Management, Landscape
Credaward, Comprehensive
Commercial, City Hotel, Gold

Principal Leads and Team Members:
Steven Low, Tong Pey Haw and
Cinco Bielza Gregorio Architecture

Lena Quek and Mabel Lim
Landscape

Paul Lim and Teo Boon Kiat
Interior Design Management



ONG&ONG
Credaward, Quality Design Brand



ONG&ONG
BCI Top 10 Architects, Singapore



ONG&ONG
BCI Top 10 Architects, Vietnam



Artyzen Singapore
Architecture, Interior Design
Management, Landscape
World Architecture Festival,
Hotel & Leisure, Finalist

Principal Leads and Team Members:
Steven Low, Michelle Gouw and
Cinco Bielza Gregorio Architecture

Lena Quek Landscape

Paul Lim and Teo Boon Kiat
Interior Design Management



Yusuf Ishak Secondary School
M&E Engineering
ACES Design Excellence Awards,
Mechanical and Electrical,
Merit Award

A NEXUS OF IDEAS, INNOVATION, AND COLLABORATION

BEYOND



BOUNDARIES ARE MEANT TO BE BROKEN AND IN ITS NEW HUB LOCATED AT 21 KEPPEL ROAD, BEYOND X BRINGS TOGETHER AMBITIOUS START-UPS, INDUSTRY LEADERS, AND ADVANCED TECHNOLOGIES TO DO JUST THAT AND SHAPE THE FUTURE.



The genesis of BeyondX dates back to 2018, where it began as an event for built environment industry leaders, but ONG&ONG Group Chairman, Ong Tze Boon envisioned BeyondX to be much more. The idea to be an industry disruptor by harnessing the power of smart technology took root and has now manifested itself into reality.

"The buildings of the future necessitate a paradigm shift, emphasising sustainability, energy efficiency, and intelligent design, and fortunately for us, the advent of digitalisation presents opportunities to achieve these objectives. Today's buildings aren't just smart—they're alive," said Tze Boon.

With all this and more, it's abundantly clear why everyone wants in on the smart building trend. The global smart building market size was valued at USD 80.60 billion in 2022 and is projected to grow to USD 408.21 billion by 2030. Getting ahead of the competition is ONG&ONG Group.

At present, 21 Keppel Road is being readied for BeyondX Lab, a dynamic living lab and incubation space designed to foster sustainable smart experiences within the built environment. Serving as an innovation centre, offering incubation programmes that connect startups in PropTech and related fields with venture capitalists, private equity firms, and government agencies, BeyondX Lab promotes partnership between Incubatees and Collaborators comprising of startups, SMEs, corporates, and academic institutions.

Through accelerators, hackathons, and open innovation platforms, it encourages the development and integration of cutting-edge technologies, addressing sustainability challenges in urban environments. With the support of key government bodies and educational institutions, BeyondX Lab provides a fertile ground for innovation in sustainable, smart building technologies.

Some of the companies that make up the ecosystem at BeyondX Lab are Allocate Space, Pylon City, MYRLab, and GoRental. Having gained a reputation for being a disruptor, ONG&ONG and Rankine&Hill will also be moving to 21 Keppel Road, where they can synergise with other collaborators.

"As a leading architecture firm in the region, it is our task to identify new technologies and innovative solutions for the real estate sector. This initiative gives us an early insight into technologies and applications that have immense potential for increasing efficiency in the real estate of our customers, giving them real added value," enthused Tze Boon.

If BeyondX is now an incubator, what is to become of its initial event format? Collaborating with Hustle & Bustle - an immersive storytelling and edutainment group - there are ideas for the event to take on a different format. Instead of being an annual convention, Hustle & Bustle will collaborate with various stakeholders to evolve the event into a year-long calendar of activities.

Co-founder and Chief Creative Officer of Hustle & Bustle, Pow Ying Hern explained that having a physical space bodes well for the evolution of BeyondX – the incubator now serves as the foundation, but it is not the only activation space. The events would constantly push the limits of what digital experiences can bring us and will serve as an enabler for the startups and industry players to showcase their latest creations, weaving an immersive journey for visitors.

2025 promises to be a milestone year. In March, BeyondX will host X-athon, a three-day journey where the brightest minds will push the frontiers of technology, exploring new horizons that will define the next era. The event will see teams of undergraduates from Institutes of Higher Learning brainstorm, plan, and initiate innovative solutions. Additionally, a summit has been scheduled for May. The Summit is designed to serve as a catalyst for innovation and collaboration and focuses on key strategic pillars like growth, community building, and sustainability. It unifies different audience segments, allowing tailored engagement to foster a cohesive, purpose-driven environment where innovation is at the forefront.

The essence of BeyondX lies in its ability to boost productivity and agility, encapsulating the interconnectedness of innovation, time management, and mobility — a holistic pursuit of endless possibilities.

To become a member of BeyondX Lab, visit <https://bit.ly/beyondxmember>.



Awards

Synergistic Specialisation –

Individually Skilled,
Collectively Dynamic

User experience is at the centre of any aspect of building design. Design encapsulates and augments it. Weaving all this together harmoniously, ONG&ONG offices around Asia are able to provide the full 360 experience, through a team of handpicked specialists.

Singapore Indonesia Malaysia Mongolia Myanmar Thailand Vietnam

360 Solution



Workplace Interior	Engineering	Project Management	Project Solutions	Brand Engagement	Environmental Wayfinding	Experience Design	Landscape	Lighting	Interior Design	Masterplanning	Architecture
<p>Building Studies</p> <p>Workplace Studies</p> <p>Space Planning</p> <p>Interior Design</p> <p>Project Management</p> <p>Sustainability</p> <p>Turn-Key Solutions</p>	<p>Mechanical</p> <p>Electrical</p> <p>Civil</p> <p>Structural</p> <p>Fire Safety</p> <p>Environmental</p>	<p>Project Management</p> <p>Project Development</p> <p>Construction Management</p> <p>Cost Management</p> <p>Place Management</p>	<p>Construction</p> <p>Design & Build</p> <p>Turn-Key Solutions</p> <p>Contract Works</p>	<p>Market Insight</p> <p>Brand Audit</p> <p>Brand Strategy</p> <p>Brand Expression</p> <p>Brand Management</p> <p>Environmental Branding</p> <p>Digital Branding Solutions</p>	<p>Planning and Analysis</p> <p>Wayfinding Strategy</p> <p>Signage System and Design</p> <p>Environmental Graphics</p> <p>Placemaking</p>	<p>User Experience Strategy</p> <p>Service Design Consulting</p> <p>Design Thinking</p> <p>Ethnographic Research</p>	<p>Master Planning</p> <p>Space Planning</p> <p>Blue & Green Solutions</p> <p>Sustainability</p> <p>Playground Design</p>	<p>Architectural Lighting</p> <p>Equipment Cost Control</p> <p>Operational Cost Control</p> <p>Lux Level Calculations</p> <p>Lighting Controls</p> <p>Lighting Audits</p>	<p>Advisory & Consultancy</p> <p>Space Planning</p> <p>Test Fit</p> <p>Feasibility Study</p> <p>Master Design Guidebook</p> <p>Turn-Key Solutions</p>	<p>Vision & Strategies</p> <p>Land Using Planning</p> <p>Connectivity</p> <p>Urban Infrastructure</p> <p>Environmental Sustainability Design</p> <p>Landscape</p>	<p>Master Planning</p> <p>Architecture</p> <p>Ideate and Create</p> <p>Conceptualisation & Analysis</p> <p>Research & Development</p> <p>Space Planning</p>
<p>The perfect corporate interior goes beyond simply creating functional workspace. Although aesthetic quality and style are a must, the environment must be synergistic and inspirational. After all, productivity is the name of the game.</p> <p>At SCA Design, we go beyond traditional interior design, altering the notion of what a working environment should encompass. Combining in-depth building and workplace studies we determine the ideal parameters for project management. In addition, with input from clientele and the end-user, space planning is used in tandem with flawless interior design, resulting in turn key work spaces that exemplify what the modern office should be.</p>	<p>Beneath the veneers of colours, curved lines and textures of all dazzling designs are the hidden machinery and mechanisms that make everything possible. Inventive engineering becomes the basis through which creativity can be transformed from imagination and turned into living, breathing reality.</p> <p>With decades of experience in the industry, Rankine&Hill consultants have collaborated on some of Singapore's most iconic designs. From Mechanical & Electrical to Civil & Structural, as well as Fire Safety and Environmental solutions, we continue to deliver a full-range of comprehensive engineering solutions that bring projects to fruition.</p>	<p>Ensuring projects are well organised and cohesively executed are the fundamentals of our business. But it's more than just putting the right people in touch or assembling the ideal team. Our goal is to connect the dots and tie up the loose ends to make sure projects are as easy and cost-effective as possible.</p> <p>The process is a practical one. First, the objectives and parameters of a given project are properly ascertained. Following which, development is carefully planned and mapped, all in an effort to ensure complete alignment and efficiency throughout the construction phase. For us, success means a stress-free experience for our clients.</p>	<p>Our newest Specialist Studio is ideal for overseeing small to medium-scale projects. Providing Design & Build expertise across a range of industries and sectors, Project X-ion specialises in guiding turnkey projects from concept to completion.</p> <p>Our clients will enjoy the convenience of a one-stop shop solution. Where the knowledge of a multi-disciplinary property and construction consultancy, with extensive local and international experience, can provide a diverse array of services including project management, cost management & quantity surveying, development management and contract work.</p>	<p>Brand Engagement is an analytical process, but also one that requires much imagination. It is about crafting experiences that foster relationships between brands and consumers. With over 27 years of experience and a client list brimming with household names, IMMORTAL is renowned for its branding programmes that have helped many clients grow their businesses. Offering a comprehensive suite of services including Market Insight, Brand Audits, Strategy, Expression, and Management, IMMORTAL is committed to helping any brand create an authentic and enduring identity.</p> <p>Wayfinding has the capacity to optimise and enhance the built environment, improving circulation, connectivity and use of space.</p>	<p>IMMORTAL delivers effective wayfinding, at every point of a journey. It is a system of signs and symbols to enable easy navigation. No matter the complexity, the primary objective is to make every space more user friendly.</p> <p>Wayfinding has the capacity to optimise and enhance the built environment, improving circulation, connectivity and use of space.</p>	<p>Experience Design is about altering human experiences through the process of Design Thinking, where we imagine and conceive in terms of utility. Human experiences are in constant flux, where improvement, progress and advancement unfold and develop over time – ultimately leaving us better positioned than before.</p> <p>At ONG&ONG, our award-winning Experience Design team finds ways to elevate and improve an experience. Whether it's a minor tweak or something completely reimagined, all the projects we work on have one thing in common: making the end-user experience better.</p>	<p>The modern built environment is increasingly characterised by the integration of nature. Regardless of typology and scale, projects today make it a point to include greenery where possible.</p> <p>At ONG&ONG, our track record of award-winning projects underscores the importance we place on landscape design. From biophilic environments and naturalistic designs, to the creation of sustainable microclimates, our landscape team endeavours to find the optimum levels of greenery to benefit and enhance the built environment.</p>	<p>Lighting design is crucial, yet too often overlooked. Lighting can highlight and accentuate any space. It can alter the ambience or mood of a given setting, bringing life, warmth and more to any environment. Lighting has the capacity to transform a solid project into a superb one, where just the right mix of shadow, light and colour can easily augment the end-user experience.</p> <p>Bright or low-key, fluorescent or neon, simple or intricate, we at ONG&ONG fully appreciate how crucial a project's lighting design can be.</p>	<p>Residential or commercial, public or private, institutional or infrastructural, interior design is crucial no matter the project. From forming the heart of a home to setting the tone for a corporate or professional space, the potential of a space is realised through interior design.</p> <p>Be it functionality or comfort, on luxury or utility, ultimately the manner in which we conceive a space influences how it will be utilised. At ONG&ONG our interior design experience runs the gamut of typologies and scales, with award-winning projects the world over as proof of our ability to truly define any space.</p>	<p>Cities rely on experienced planners when creating infrastructure master plans. The process of conceptualisation demands imagination and a progressive mindset.</p> <p>It comprises a plethora of considerations, including the accessibility to civic amenities, drainage systems and encouraging communities. A well-designed city is future proof, catering to the evolving needs of its inhabitants for decades.</p>	<p>For nearly half a century, ONG&ONG has been synonymous with architectural excellence. Regardless of scale or typology, our extensive experience and repertoire of knowledge have empowered the firm to deliver countless projects of the highest calibre.</p> <p>Today, the firm operates in several countries in Asia, as we build on a tradition of excellence, working to grow our reputation for dependability and innovation in the region and beyond - delivering a comprehensive range of services that includes individualised expertise in Master Planning, Brand Engagement, Experience Design, Interiors, Landscape and Lighting.</p>











Specialists

www.sca-design.com

www.rankine-hill.com

www.proj-innovations.com

www.proj-xion.com

www.immortal.com.sg

oxd.ong-ong.com

www.ong-ong.com

As Asia continues to urbanise, the importance of sustainable urban living cannot be overstated. Smart city initiatives offer a pathway to create liveable yet environmentally conscious cities.

THE RISE OF SMART ASIANS CITIES

Asia's urbanisation is unprecedented, with millions of people flocking to cities in search of better opportunities and living conditions. This mass migration has placed immense pressure on city infrastructure, necessitating innovative solutions to ensure sustainability, efficiency, and quality of life. This phenomenon presents numerous challenges, from traffic congestion and pollution to resource management and public safety. To address these issues, many Asian cities have turned to smart technology as a key component of their urban design and master planning strategies.

As a holistic response, Asian cities have begun implementing smart technology in their urban development. They incorporate data-driven decision-making, Internet of Things (IoT) technology, and sensors to monitor and optimise city functions.

Establishing smart cities for Asia's urban landscapes is a multifaceted and complex endeavour that requires a comprehensive framework to ensure successful planning, development, and implementation. A well-structured framework is essential. Some of the key components necessary for establishing smart cities are:

Developing a clear Vision and Strategy, which involves setting specific goals and objectives that align with the unique needs and priorities of each city. A collaborative approach ensures that the smart city's development is rooted in the real needs of the community and provides a long-term roadmap.

Infrastructure and Connectivity. Smart cities rely on robust built and digital infrastructure. This includes high-speed internet access, a reliable power supply, and transportation networks.

Data and Technology – the lifeblood of smart cities. Asian countries must create data ecosystems that collect, store, and analyse information from various sources. Technologies like artificial intelligence, machine learning, and big data analytics play a crucial role in deriving insights from data for better decision-making.

Sustainable Urban Planning. Asian countries often face rapid urbanisation, so sustainable measures are vital to alleviate the strain on resources and reduce environmental impact. Smart cities must prioritise sustainability. Sustainable urban planning includes efficient land use, green spaces, and eco-friendly transportation solutions. Promoting renewable energy sources, waste management, and water conservation are integral to achieving environmental goals.

Several Asian cities have been proactive in implementing smart technology in their urban planning and design, transforming themselves into role models for smart cities worldwide. Here are some noteworthy examples:

Da Nang Sustainable City

Da Nang, a rapidly growing city in Vietnam, is addressing its development challenges with a focus on sustainability. The "Da Nang Smart City" project aims to create a sustainable, liveable, and resilient city by leveraging technology. The city has implemented a smart traffic management system, a flood warning system, and a comprehensive public transportation network.

At the core of this initiative is the utilisation of smart technology to enhance the city's infrastructure, services, and quality of life for its residents. The project focuses on several key areas, including transportation, public services, environmental sustainability, and governance. The "Da Nang e-Government" initiative emphasises digital services, enabling citizens to access government services online, reducing bureaucracy and improving efficiency.

Public services are streamlined through digital platforms and applications, offering citizens easy access to government services, healthcare, and education. The project also emphasises environmental sustainability with smart waste management and green infrastructure development to enhance resilience to climate change.

Singapore The Garden City Transformed

Singapore's Smart Nation initiative is designed to harness the power of digital technology and networks to improve living conditions, create economic opportunities, and build stronger communities. The city state's commitment to smart urbanism has redefined its landscape and garnered plaudits for its sophisticated e-Government services, such as Life SG, National Digital Identity (Singpass), and CentEX.

Data is applied in innovative ways, such as in predictive analytics for healthcare, real-time transport updates, and digital services for residents. For example, sensors and cameras track traffic flow, helping to manage congestion. Additionally, the Smart Nation initiative engages citizens through the MyInfo platform, which simplifies interactions with government agencies. Singapore's use of smart technology extends to sustainability, with the creation of a

"City in a Garden." Smart systems control energy and water consumption in buildings, parks, and public spaces, burnishing the city's eco-friendly credentials.

Green building initiatives have been a cornerstone of Singapore's transformation. The city boasts numerous eco-friendly structures, designed and constructed with energy-efficient materials and technology. The iconic Marina Bay Sands, for example, incorporates rooftop gardens, solar panels, and rainwater harvesting systems. These initiatives reduce energy consumption and greenhouse gas emissions, setting the standard for eco-conscious architecture worldwide.

Singapore's urban planning also places a premium on green spaces. The city's designers have masterfully woven parks, gardens, and recreational areas into the urban fabric, making greenery accessible to all. The award-winning Gardens by the Bay, a sprawling nature park in the heart of the city, showcases the fusion of nature and urban living.

Tokyo A Mega Metropolis Redefined

Tokyo's smart city initiatives aim to address its unique challenges, such as high population density and earthquake risks. One notable facet of Tokyo's Smart City efforts is its emphasis on energy efficiency. The city has integrated smart grids, which enable real-time monitoring and management of energy consumption. These grids help reduce energy waste and lower carbon emissions, aligning with sustainability goals. Tokyo's advanced transportation system also incorporates smart technology, including intelligent traffic management systems which optimise traffic flow and reduce congestion. Additionally, the city employs smart parking solutions to alleviate the perennial issue of limited parking space.

Moreover, Tokyo's Smart City initiatives prioritise data-driven decision-making for public services. For example, they use data analytics to predict and mitigate disasters like earthquakes and floods, triggering early warning systems that protect residents. When it comes to citizen engagement, Tokyo utilises smart technology for interactive platforms and apps that empower residents to participate in governance and provide feedback.

All this fosters a sense of community and promotes collaboration between the government and its citizens. Overall, Tokyo's Smart City initiatives highlight the power of technology in creating a more efficient, sustainable, and connected urban environment, setting an example for cities worldwide to emulate in their quest for a smarter and more liveable future.



Seoul Urban Renewal Through Technology

South Korea's embrace of smart technology for urban renewal is a testament to its commitment to modernisation and sustainable urban development.

One striking example of this effort is the Songdo International Business District, a smart city built from the ground up near Incheon. Songdo is equipped with cutting-edge technology, including smart waste management systems, intelligent traffic control, and energy-efficient buildings. The city's infrastructure is built to enhance sustainability and reduce environmental impact.

Seoul, South Korea's capital, has also undergone significant transformation through smart technology. The city employs smart grids to optimise energy distribution and consumption, reducing waste and greenhouse gas emissions. Moreover, Seoul's public transportation system integrates real-time data and mobile apps, making commuting more convenient and environmentally friendly.

By leveraging innovation in areas like energy, transportation, and e-governance, the country paves the way for modern urban development, setting an example for other nations seeking to revitalise their urban centres.

Looking ahead, Asian cities are likely to continue embracing smart technology to address urban challenges. There is a growing focus on sustainability, resilience, and inclusivity, as cities aim to balance technological advancements with the needs of their citizens. As Asian cities continue to evolve and adapt, the integration of smart technology and the role of partnerships with private sector technology providers and international collaborations will be the key drivers of urban development in the region.

LR-House

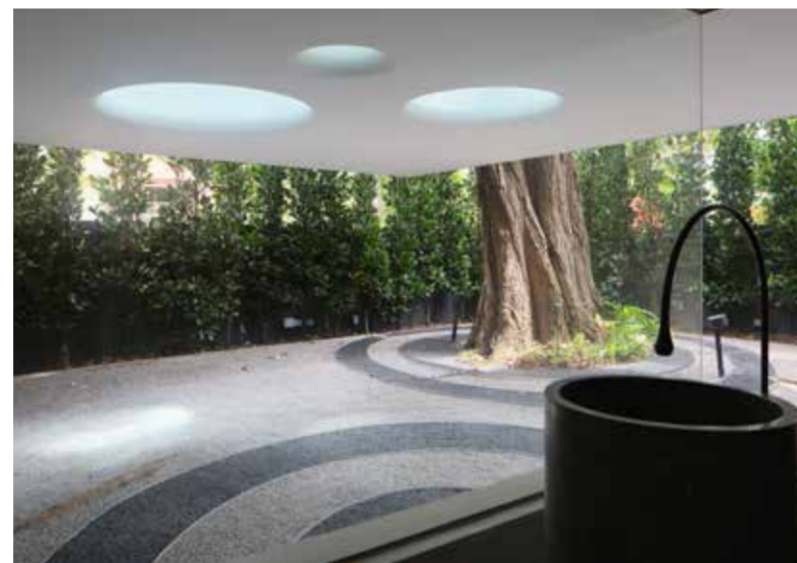
To give LR-House its undeniable aesthetic appeal, a holistic approach was employed to integrate the architecture, interior design, and landscaping.

Singapore

Principal Leads and Team Members:
Elita Ong Architecture

Given their scarcity, landed homes rank among the most coveted real estate assets in Singapore. Their allure lies in the promise of being a canvas for personal expression. They offer a sense of space and freedom, allowing residents to infuse their unique style into every corner, which the owners of LR-House have done most adroitly.

Situated on a corner lot, this three-story home features lush greenery set against an aluminium screen featuring a stylised forest pattern. The L-shaped footprint enhances the house's corner presence and preserves a mature tree, symbolising generational growth. Upon entering through a wooden door, visitors are greeted by an



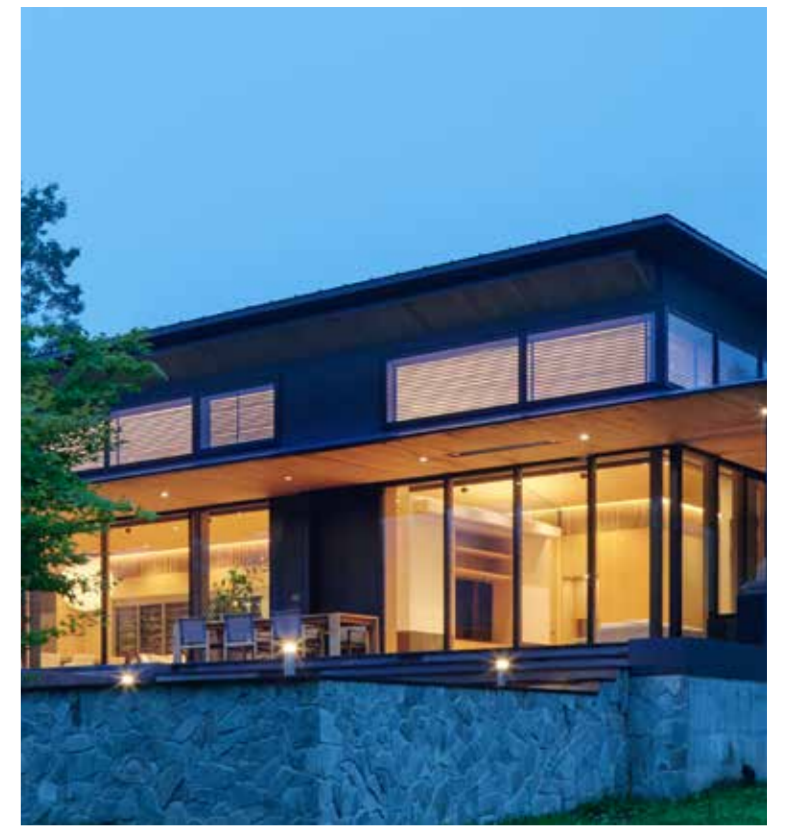
entertainment space with views of a plunge pool, and a study and powder room overlooking a Japanese-inspired zen garden. The powder room, with its fair-faced concrete wall and dark grey flooring, exudes an understated elegance through its neutral tones.

A sculptural art piece adds character by the stairs where one ascends to the first floor which contains the living and dining areas. The living room connects to the pool and garden, while the dining area features a state-of-the-art imported kitchen and bespoke lighting. The design incorporates the Japanese principle of *Shakkei*, or borrowed view, to create a home that captures and enhances its natural surroundings.

The second floor houses private spaces, including an expansive and luxurious master suite with a minimalist, neutral colour palette. A skylight brightens the walk-in wardrobe, and the children's bedroom follows a similar design. Quality materials are thoughtfully chosen and applied throughout.

The attic has been converted into a guest bedroom, leading to a rooftop with a BBQ area, ideal for entertaining. Strategically placed green spaces throughout the property enhance its natural feel. This holistic design approach integrates architecture, interior design, and landscaping, creating a harmonious living environment.





ONG&ONG Singapore

MK Residence, Japan

Nestled in the tranquil landscape, this home harmonises contemporary architecture and nature, creating a private sanctuary with a focus on comfort and scenic vistas. [Japan](#)

Principal Leads and Team Members:
ONG&ONG Architecture



MK Residence Japan



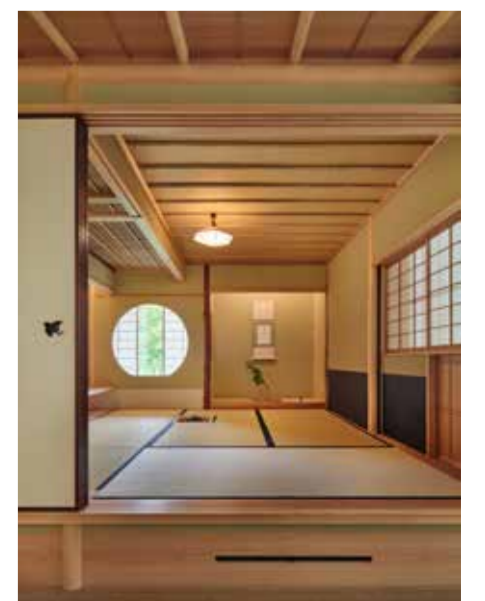
This newly completed single-story residence, sprawling across 7,534 sqft harmoniously blends modern architecture with the natural landscape of its surroundings. Situated on a sloping plot next to a small water catchment area in Nagano, Japan, the house is strategically positioned to take advantage of the unique terrain and scenic views. The design preserves an existing driveway and structure, focusing the main construction on the left side of the plot to maintain the integrity of the land.

The house is thoughtfully divided into two main zones: from the carpark to the right side houses the private wing for the owners while the left side comprises of communal and guest areas. The private wing includes the principal bedroom, a junior bedroom, and essential utility spaces like laundry and storage spaces, accessible through a private entrance from the car park. A shared foyer, offering views into a central garden and down to a pool area, serves as a transitional space between the private and guest wings.

The guest area features an open living, dining, and kitchen area, complete with a wet kitchen and pantry. A striking fireplace divides the main living space from a secondary sitting area, all of which opens out to a timber deck and a heated lap pool. The communal/guest area also houses a series of guest bedrooms, including a Japanese-style room and a suite with a private sitting area, designed to maximise comfort and privacy. The incorporation of an onsen, an indoor garden, and an outdoor BBQ area further enhances the guest experience.

The residence boasts a mixed-materials structure with a steel frame on one side and Japanese timber construction on the other, reflecting a pleasant combination of modern and traditional building techniques. The roofline is kept simple and continuous to maintain a cohesive aesthetic.

A key feature of the house is its thoughtful orientation; the facade facing the road is deliberately closed off to provide privacy, while the rear of the house opens up to embrace the surrounding nature and water views. This design approach ensures that the house not only harmonises with its environment but also offers a tranquil retreat for its inhabitants. The use of natural materials and careful attention to the layering of spaces further accentuates the home's connection to its setting, making it a true sanctuary amidst nature.





stands as a beacon of luxury retail in one of the world's top airports, strategically positioned to capture the high foot traffic of both departing and transiting passengers.

Featuring a sleek and modern design that reflects Lotte's commitment to providing a premium shopping environment, the interiors are meticulously crafted, with high-end fixtures and lighting that create an inviting and sophisticated atmosphere. Integrating elements of nature and featuring innovative in-store technology, Lotte's design concept redefines the retail experience where travellers can enjoy a seamless shopping journey. Some of the unique offerings include a specialised Cognac brand boutique, immersive experience zones dedicated to whiskey, gin and wines, and a high-tech tasting bar.

Makr Shaki, a producer of robotic bartenders and baristas, has introduced Toni – a robot master mixologist at Singapore's Changi airport – signifying the first time a robot mixologist is deployed at an airport. Toni fits into one of the world's most innovative travel destinations and is located in both Terminals 2 and 3 within the Lotte Duty-Free stores.

Toni's presence at Changi Airport adds a touch of sophistication to the travel retail landscape, amplifying the reputation of both Changi Airport and Lotte Duty Free as leaders in their respective domains. The convergence of cutting-edge robotics and premium retail sets a new benchmark for futuristic and immersive airport experiences, making this unveiling a noteworthy moment in the world of travel and hospitality.



Project Innovations and Project X:ION

Lotte Duty Free, Changi Airport

Marking its entry into Singapore, Lotte Duty Free transforms Changi Airport with its sophisticated store designs, cutting-edge experiences, and premium offerings.

Singapore

Principal Leads and Team Members:

Paul Roger Lim, Linda Khor, Cheng Ming Wei, Nobleza Naomi Gwyneth Verallo and Werty Ho
Project Management

Lotte Duty Free made its entrance into Singapore through becoming the Liquor and Tobacco concessionaire at Changi Airport in 2020. To mark this important milestone, the duty-free outlets have been given a fresh design approach to align themselves with Lotte's philosophy.

Project Innovations and Project X were engaged to spearhead the design makeover for the duplex store, while also overseeing the completion of 20 outlet stores across Terminals 1, 2, and 3, covering a total retail space of 8,225 sqm within the set deadline. The double-storied store, located in Terminal 3,





ONG&ONG Malaysia

Cora, Eco Ardence

Featuring contemporary, zen-inspired designs by ONG&ONG, this sustainable development offers a balanced lifestyle of safety, green spaces, and community engagement.

Malaysia

Principal Leads and Team Members:

Hasbullah bin Abdullah and
Suhana binti Sulaiman *Architecture*

A rising demand for lifestyle homes that encompass safety features and recreational facilities for young families and upgraders has led to the launch of Eco Ardence, a joint venture between EcoWorld and Cascara Sdn Bhd. In 2019, a new phase of landed homes was branded as Cora and launched, with the developers engaging ONG&ONG for their architectural services.

For Cora, the team organised the development into clusters to foster a sense of neighbourhood and belonging. Green spaces are strategically integrated throughout the estate, providing residents with access to nature and recreational areas. The planning also includes efficient infrastructure for transportation, waste management, and water conservation, aligning with the broader goals of Eco Ardence to promote an eco-friendly and sustainable lifestyle.

For 146 units within the Cora collection, the design by ONG&ONG features a blend of contemporary and zen-inspired architectural styles. Each unit follows a similar design philosophy but remains unique, offering variety and individuality to the residents. The interiors are characterised by clean lines, minimalist finishes, and the use of natural materials to create a warm and inviting atmosphere.

Meanwhile, public spaces within Cora are thoughtfully designed to encourage social interaction and community engagement, with amenities such as parks, playgrounds, and communal gardens.

One of the significant challenges the team faced during the Cora project was the pandemic, where the team had to adapt to managing the construction stage online. This required scheduling online meetings, ensuring effective communication, and making sure all parties understood the project design and timeline. Despite these challenges, the team successfully navigated the obstacles, maintaining progress and ensuring the project was completed.



Permintaan tinggi untuk rumah gaya hidup dengan ciri keselamatan dan kemudahan rekreasi, terutama bagi keluarga muda dan pemilik yang ingin menaik taraf, telah mendorong pelancaran Eco Ardence, hasil kerjasama EcoWorld dan Cascara Sdn Bhd. Pada 2019, fasa baru rumah bertanah, Cora, dilancarkan dengan ONG&ONG menyediakan perkhidmatan seni bina.

Pembangunan Cora dibahagikan dalam kluster bagi mewujudkan rasa kejiranan, dengan kawasan hijau dan kemudahan rekreasi. Infrastruktur yang cekap untuk pengangkutan, pengurusan sisa, dan penjimatan air selari dengan matlamat Eco Ardence untuk gaya hidup lestari.

Reka bentuk 146 unit Cora oleh ONG&ONG menggabungkan gaya kontemporari dan inspirasi zen, dengan setiap unit menawarkan keunikan tersendiri. Reka bentuk dalam menampilkan garis bersih, kemasan minimalis, dan bahan semula jadi, mewujudkan suasana yang selesa.

Ruang awam Cora juga direka untuk menggalakkan interaksi sosial, dengan kemudahan seperti taman, taman permainan, dan ruang komunal. Walaupun menghadapi cabaran pandemik, pasukan berjaya menyelesaikan diri dengan pengurusan pembinaan secara dalam talian dan memastikan projek berjalan lancar.



ONG&ONG Malaysia

Nara Townhouses, Eco Ardence

Nara at Eco Ardence offers a Japanese-inspired design that combines aesthetic excellence with modern amenities for a balanced lifestyle. **Malaysia**

Principal Leads and Team Members:

Hasbullah bin Abdullah, Wan Zuraihi bin Wan
Muhammad, Abdullah bin Husin Al Jazri,
and Noor Zharif bin Noor Rashid *Architecture*



Phase 3 of the upscale Eco Ardence development, the Nara Collection uniquely consists of Garden Homes and Courtyard Homes – otherwise known as townhouses, which are essentially two dwellings stacked atop of each other. For this project, Eco World Development Group Berhad engaged ONG&ONG to design, manage, and oversee the completion of 80 units of its 4-storey townhouse.

Nestled amidst lush greenery and scenic landscapes, Nara homes sport a spacious, Japanese-inspired design with black accents on the exterior that offer residents an unparalleled experience characterised by great

design, convenience, and connectivity. Through meticulous planning, the team brought the vision of Nara townhouses to life. The design called for a clear demarcation of each unit, presenting a challenge for the shared infrastructure this layout necessitating careful consideration of space allocation and accessibility.

Throughout the design development, the team refined the architectural vision, balancing aesthetic appeal with functional efficiency. Other challenges were the changes in the road levels that impacted

the floor level setup. There was also the need to sync Phase 3's architecture language with Phase 1 and 2 that was designed by another firm.

The Nara Collection embodies the concept of a live-work-play environment, where residents can enjoy a balanced lifestyle enriched with convenience and connectivity. With a range of recreational facilities, retail outlets, and dining options within walking distance, it promises the convenience of modern urban living without sacrificing the tranquility of nature.



Fasa 3 pembangunan mewah Eco Ardence, Koleksi Nara, terdiri daripada Garden Homes dan Courtyard Homes yang unik – juga dikenali sebagai rumah bandar, di mana dua unit kediaman bertingkat berada di atas satu sama lain. Untuk projek ini, Eco World Development Group Berhad telah melantik ONG&ONG untuk mereka bentuk, mengurus, dan mengawasi penyempurnaan 80 unit rumah bandar 4 tingkat.

untuk infrastruktur perkongsian, memerlukan pertimbangan teliti tentang peruntukan ruang dan aksesibiliti.

Terletak di tengah-tengah kehijauan dan pemandangan indah, rumah Nara

menampilkan reka bentuk luas yang diilhamkan dari Jepun dengan aksen hitam pada bahagian luar, menawarkan pengalaman kediaman yang tiada tandingan, dicirikan oleh reka bentuk yang hebat, keselesaan, dan sambungan. Melalui perancangan teliti, pasukan berjaya merealisasikan visi rumah bandar Nara. Reka bentuk ini memerlukan pemisahan jelas bagi setiap unit, yang mencetuskan cabaran

Sepanjang proses pembangunan reka bentuk, pasukan memperhalusi visi seni bina, mengimbangkan daya tarikan estetik dengan kecekapan fungsi. Cabaran lain termasuk perubahan aras jalan yang memberi kesan kepada susunan aras lantai. Terdapat juga keperluan untuk menyelaraskan bahasa seni bina Fasa 3 dengan Fasa 1 dan 2 yang direka oleh firma lain.

Koleksi Nara menghidupkan konsep persekitaran 'live-work-play,' di mana penduduk dapat menikmati gaya hidup seimbang yang diperkaya dengan kemudahan dan sambungan. Dengan pelbagai kemudahan rekreasi, kedai runcit, dan pilihan tempat makan dalam jarak berjalan kaki, ia menjanjikan kesejahteraan kehidupan bandar moden tanpa mengorbankan ketenangan alam semula jadi.





ONG&ONG Malaysia

Duta Park Residences

Offering stunning views, serene spaces, and flexible living environments ideal for contemporary lifestyles, Duta Park Residences stands as a symbol of urban luxury. **Malaysia**

Principal Leads and Team Members:

Hasbullah bin Abdullah, Louis Tan, Wan Zuraihi, Nik Ezura, Azhar Chik, Nur Helwani *Architecture*



Duta Park Residences is a striking residential development designed with both functionality and aesthetics in mind. Located in Kuala Lumpur, Malaysia, this project effortlessly integrates modern urban living with nature, providing residents with a tranquil environment amidst the city's hustle and bustle. A masterclass in modern residential architecture, the development's design blends luxury, comfort, and sustainability.

The towers of Duta Park Residences are adorned with a sleek, modern facade that features a combination of glass, steel, and concrete. The glass elements are strategically placed to provide unobstructed views while allowing natural light to penetrate deep into the living spaces. The use of high-performance glass not only enhances aesthetics but also improves energy efficiency by reducing heat gain.

The vertical lines in the design accentuate the towers, making them appear taller and slenderer than their actual form. This verticality is played up by balconies and recessed spaces, which add rhythm and dynamism to the overall structure. The design ensures that each unit benefits from natural light and ventilation, promoting a healthier living environment.

Inside, the residences boast open-plan layouts designed to maximise space and flexibility. The living, dining, and kitchen areas blend effortlessly, creating a spacious environment ideal for modern living. Bedrooms are elegantly finished with timber laminate flooring and designer fixtures, while communal areas, including the living, dining, and kitchen areas, are tiled for an added touch of luxury.

A significant focal point of Duta Park Residences is its podium deck, located on levels 9 and 10, this elevated platform is designed as an urban oasis, with landscaped gardens, water features, and recreational

areas. The residence also caters to working adults, with work-friendly areas such as meeting rooms and lounges that promote work-life balance. Communal spaces like the entertainment pavilion and multipurpose hall foster social interaction and community spirit.

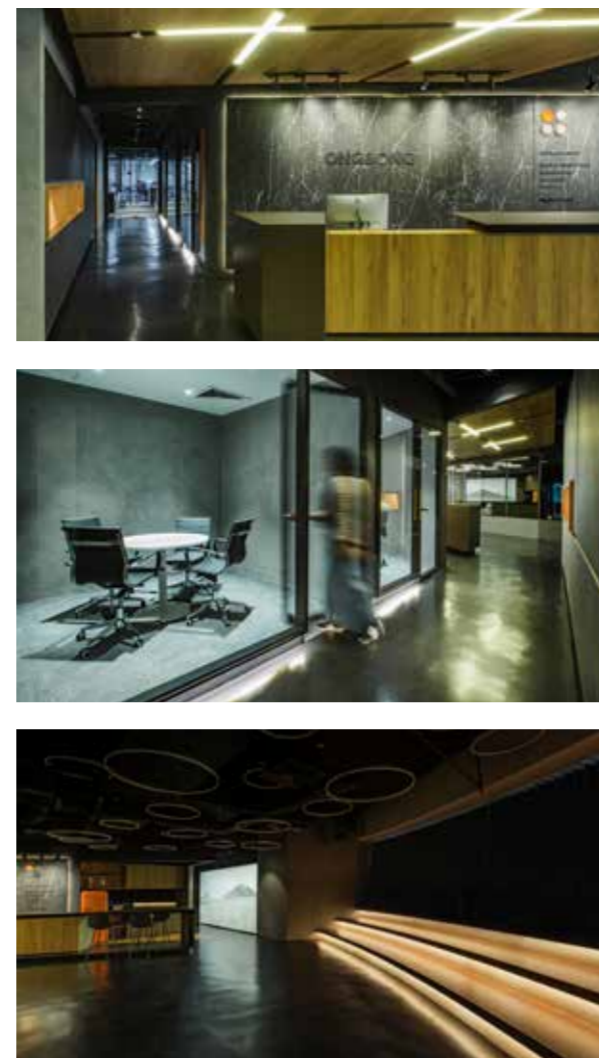
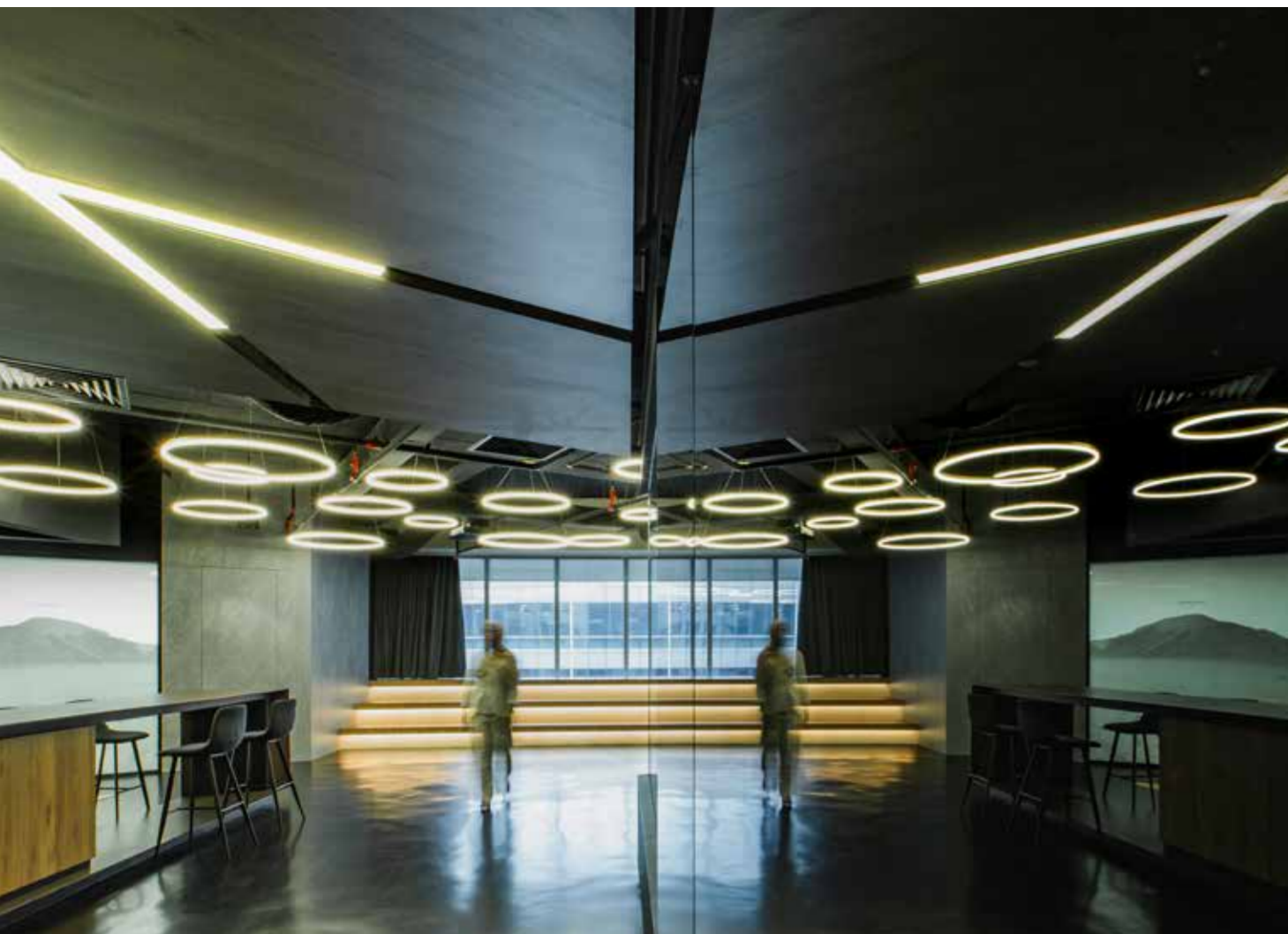
At roof level of the taller towers, the accessible deck boasts an infinity-edged jacuzzi and swimming pool with spectacular views of the Kuala Lumpur skyline. A Sky Lounge is equipped with functional kitchen for private group dining and entertaining. Duta Park Residences as a symbol of modern urban living, combining architectural elegance with practical design.

Duta Park Residences adalah pembangunan kediaman yang mengutamakan fungsi dan estetika di Kuala Lumpur. Menggabungkan gaya hidup bandar moden dengan elemen semula jadi, projek ini menawarkan suasana tenang di tengah kota. Menara-menara kediaman ini menampilkan fasad moden dengan kaca, keluli, dan konkrit, serta garisan menegak yang memberikan kesan lebih tinggi dan langsing.

Di tingkat bumbung, dek dengan jacuzzi, kolam renang infiniti, dan Sky Lounge menawarkan pemandangan indah Kuala Lumpur, menjadikan Duta Park Residences simbol kehidupan bandar moden yang elegan dan praktikal.

Di dalam, susun atur pelan terbuka memaksimumkan ruang, dengan bilik tidur berlantai kayu lamina dan kawasan komunal bertile mewah. Dek podium di tingkat 9 dan 10 mencipta oasis bandar dengan taman lanskap, elemen air, dan ruang rekreasi. Terdapat juga ruang kerja dan sosial seperti pavilion hiburan dan dewan serbaguna.





ONG&ONG Malaysia

ONG&ONG Kuala Lumpur Malaysia office

ONG&ONG Malaysia's new office is a thoughtfully designed space that blends modern luxury with functionality, creating an inspiring environment for staff and clients alike.

Malaysia

Principal Leads and Team Members:

Tan Kee Keat, Mohd Faizal Natilan,
Rajinderjit Singh and Mohd Hazam Mohid
Architecture

The relocation of the ONG&ONG Malaysia office, situated in Plaza Sentral, Kuala Lumpur, reflects a strategic shift towards fostering greater collaboration by bringing the entire office onto a single floor. Previously spread across levels 3 and 8 of Block B, the new unified workspace on level 7 of Block A maximises interaction and communication among staff members, aligning with the company's commitment to unified teamwork and innovation.

The office's interior design features a predominantly natural palette to create a sophisticated and intimate atmosphere. The minimalistic approach emphasises clean lines and open space, giving the office a sleek, modern feel. Geometric elements, such as circular lighting fixtures add a layer of visual interest and connection to the brand while maintaining the understated elegance.

In the new office, the layout embraces modern luxury with a symmetrical arrangement, where the reception desk backed by the stone feature wall serve as the focal point. A sleek reception area leads to the client lounge, which includes a secluded nook – the perfect space for a quiet catch up. The colour palette leans towards warm tones and is paired with furnishings and finishings that lend the space a dramatic flair.

Nearby are the suite of client-facing meeting rooms and the conference room. Adorning the smart glass panels of the conference room are the mountain peaks named after the founders of the ONG&ONG – Ong Teng Cheong and Ong Siew May. These smart glass panels would turn from transparent to opaque when the conference room is lit, offering better privacy for the users.

Moving into the workspace and it is evident that the space was designed for employees. Multiple pockets of space for different purposes encourage staff to take autonomy over their surroundings to suit their needs. Designed with huddle rooms, open-plan deskings, little nooks tucked away in corners, and a large collaboration table in the centre of the floorplate, the space is aligned with the agility staff require today to perform their best work.

Natural light plays a crucial role in balancing the overall aesthetics of the space, with large windows allowing ample sunlight to flood the space. The integration of panels and curtains provides privacy without sacrificing openness creating a harmonious balance between solitude and connection.

Materials such as the rich wood textures and stone finishes, enhance the space's luxuriant feel, while layered and dramatic lighting create an inviting and contemporary atmosphere. Other facilities are the pantry area where staff can catch up with their colleagues or gather for a quick meal. There is also a nursing room for new mothers, which allows them to balance their professional responsibilities with their caregiving needs. These spaces demonstrate ONG&ONG's commitment to work-life balance and gender inclusivity, making the workplace more attractive to top talent.

Overall, the office embodies modernity, elegance, and professionalism, fostering an environment conducive to both focused work and dynamic collaboration, perfectly encapsulating ONG&ONG's vision of a connected, innovative workplace.



Parochial House



ONG&ONG Singapore

Parochial House

Following a meticulous restoration, Parochial House has emerged anew, retaining its historic charm while serving the modern needs of St Joseph's Church.

Singapore

360 - Principal Leads and Team Members:

Joe Fu Zhuo and Tan Wei Sheng Architecture
Lena Quek Landscape

Sitting within the compound of St Joseph's Church is Parochial House, a 112-year-old building that has emerged anew from a seven-year restoration and renovation project carried out alongside the conservation works for the main church.

Designed by Donald McLeod Craik in the Portuguese Baroque style with Gothic accents, it was originally the headquarters of the Portuguese Mission in Singapore. Today, Parochial House serves as an annex to the main church, and functions as an office and residence for the staff and priests of the parish.

The restoration included the encaustic floor tiles, nine sets of azulejo tiles depicting scenes from the Bible, and unique architectural features. Other artefacts that were restored are the throne of the Bishop of Macau, a roundel above the main entrance with the letters "PM" for Portuguese Mission, and a desk once used by the visiting Bishops of Macau.

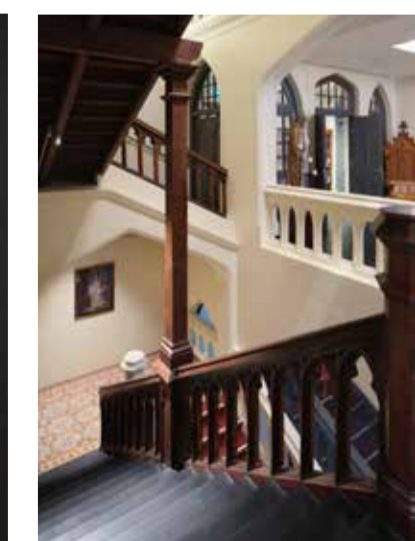
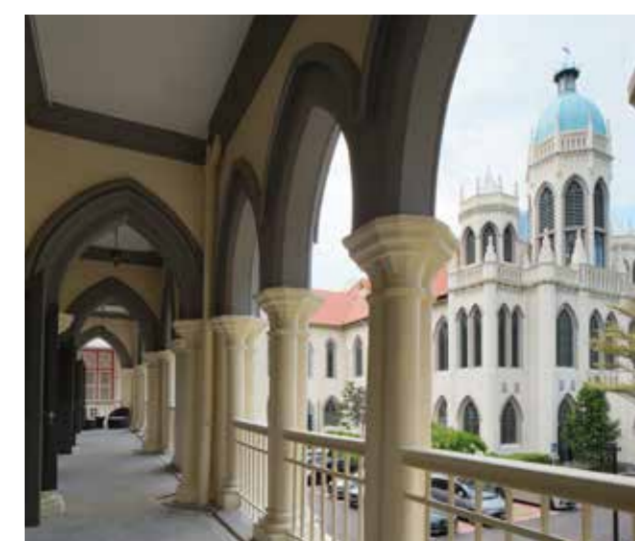
At the heart of the building, a grand staircase winds upwards, decorated with a carved wooden balustrade that was sanded and polished to its



former glory. A lift was inserted with lobbies on each floor to improve accessibility, while a fire escape staircase was added to bring it up to code.

Externally, the walls were painted a pleasing beige shade which harmonises well with the other buildings in the church compound. The five-foot way along Victoria Street was raised to resolve the issue of periodic flooding. Across the facades, all statuary was carefully cleaned and repainted.

Within Parochial House, a refreshed layout to suit the needs of the church was implemented. The street level rooms retain their more public-facing purposes, with a large hall, choir room and lounge rooms for various functions. Offices for staff and priests occupy the second level, while the third level hosts a private chapel, more offices, and accommodations for priests and other visiting members of the priesthood.





ONG&ONG Singapore

Jurong Town Hall Bus Interchange

Designed by ONG&ONG, the Jurong Town Hall Bus Interchange features a modern, green-themed design that enhances commuter flow, accessibility, and connectivity. **Singapore**

Principal Leads and Team Members:
Wendy Tan, Wang Lai Meng, Ryan Teo and Khor Siew Hui *Architecture*

Jurong Town Hall Bus Interchange, located along Venture Drive, is strategically positioned next to Jurong East MRT, ensuring excellent connectivity to nearby landmarks. The modern two-storey layout accommodates high passenger volumes with 41 bus bays, retail shops, and commuter facilities, offering a seamless experience for daily commuters.



The design harmonises with its surroundings through earthy-toned granolithic floor patterns and a green-themed exterior. Accessibility was a key focus, with enhancements for visually handicapped commuters. Collaborating with the Singapore Association of the Visually Handicapped, ONG&ONG incorporated spacious waiting areas and improved wayfinding elements to ensure ease of movement.

Retail spaces are cleverly integrated on both floors, with a unique island-shaped shop in the first-floor concourse, a creative solution to overcome space constraints. On the second floor, elongated shop layouts maximize the available site space.

A standout feature is the complex, three-dimensional folded ceiling panels that conceal structural elements and serve as a visual guide for commuters. The demountable ceiling and roof allow easy maintenance of underground sewer pipes, while the green roof and seamless ceiling joints contribute to both the aesthetics and functionality of the interchange. This thoughtful design blends practicality with architectural innovation.

ONG&ONG Singapore

Tengah Bus Interchange

The Tengah Bus Interchange design combines nature, functionality, and accessibility, establishing a vibrant social and transit hub. **Singapore**

Principal Leads and Team Members:
Josephine Loo, Khor Siew Hui and Shawn Low *Architecture*



Tengah Bus Interchange plays a vital role in fostering community in Singapore's newest town, Tengah. Reflecting the area's forestry theme, the interchange features a biophilic design with sustainable elements like internal courtyards and naturally ventilated spaces. Green peripheries bring nature into the concourse, creating a pleasant environment for commuters, visitors, and employees, with offices and lounges offering views of the courtyards.

Tengah Bus Interchange's design integrates residential-style materials to foster a sense of community, rather than focusing solely on functionality. Centralised communal areas enhance visibility and circulation, encouraging interaction among residents. The interchange also serves as a social gathering point, offering essential amenities in an area that currently has limited options. The design promotes smooth foot traffic flow with clear wayfinding elements and open spaces that facilitate easy movement.

In line with LTA guidelines, the interchange prioritises accessibility, featuring barrier-free entrances, priority seating, wheelchair-accessible facilities, and family-friendly amenities. Once the nearby HDB estates are completed, direct pedestrian connections and green corridors will further integrate the bus interchange into the fabric of the community, enhancing its role as a central hub in Tengah.

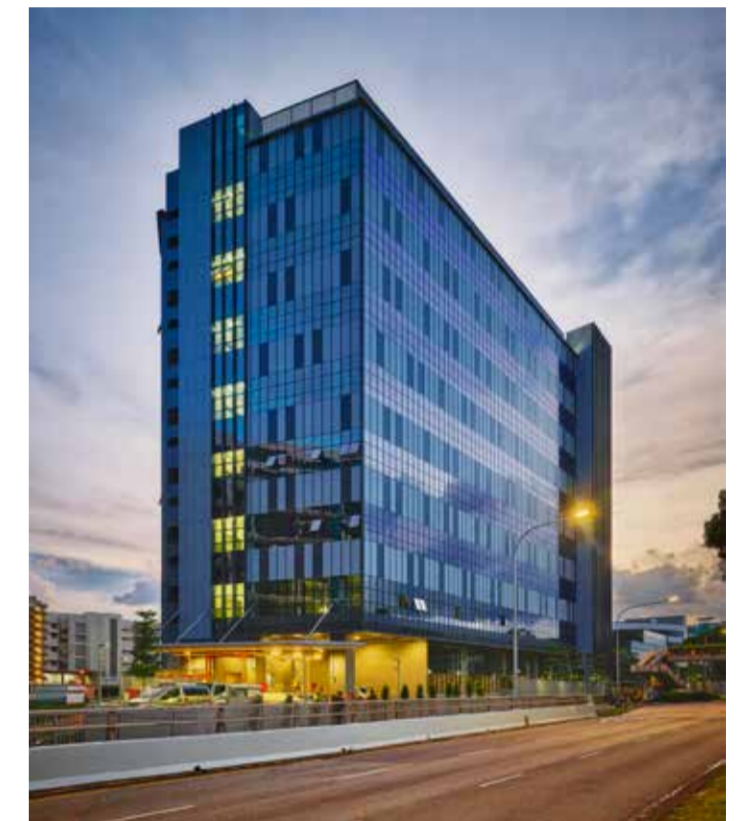
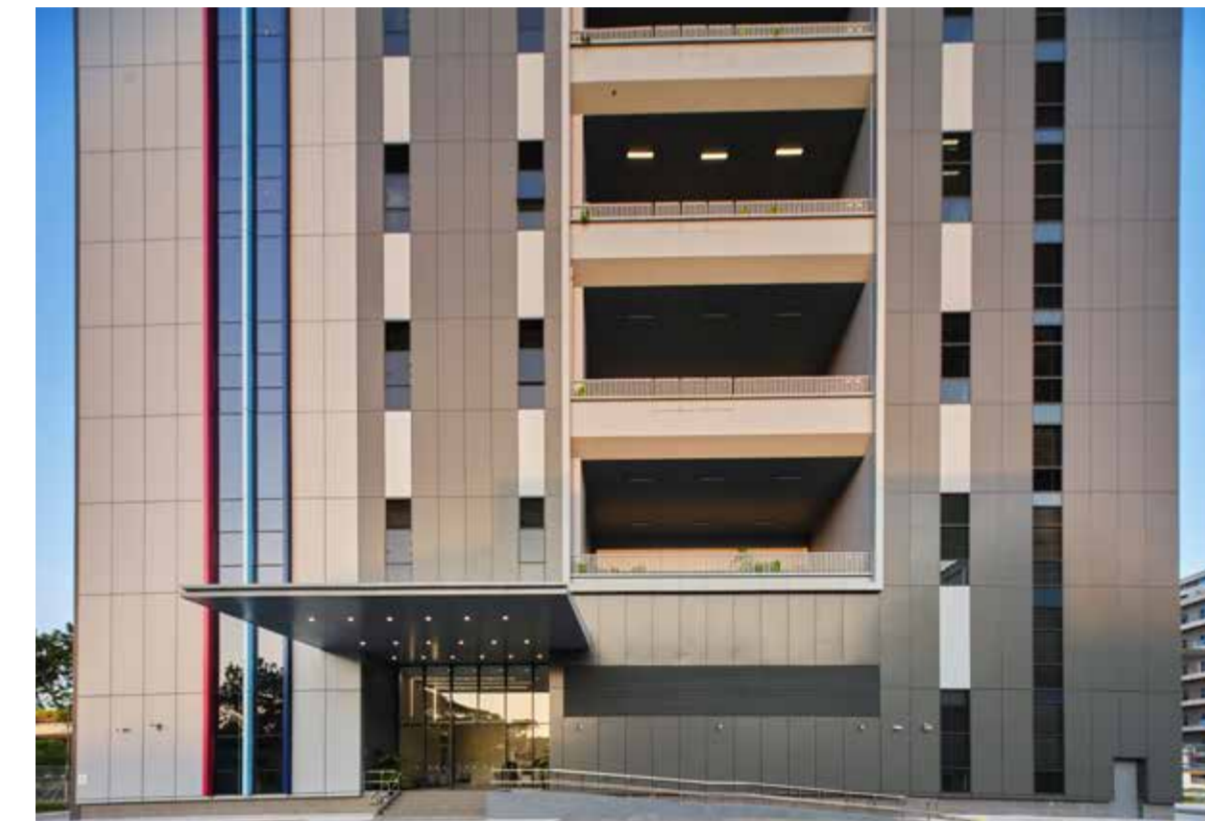
ONG&ONG Singapore

7002 AMK

ONG&ONG's 360 Solution combines innovative design and sustainable elements that connects the space to its urban surroundings.

Singapore

360 - Principal Leads and Team Members:
Wendy Tan Kuan Kuan, Josephine Loo Kian Cheng and Joseph Mejia Fermanes *Architecture*
Jerome Tan Teng Wee *Lighting*



Strategically located within Singapore's Ang Mo Kio Industrial Estate, with excellent visibility from the main road, 7002 Ang Mo Kio Ave 5 (7002 AMK) is a newly-constructed building that exemplifies architectural innovation. ONG&ONG provided its 360 Solution, bringing together architects, C&S and M&E engineers, and lighting specialists to create a space that maximises daylight, open layouts, and views while enhancing public amenities.

The eight-story building features a striking glass facade, blending sleek design with functional elegance. Supported by a sophisticated aluminium

framework, the glass panels offer unobstructed views of the urban landscape, fostering a connection with the outside world. The interplay of different glass shades adds depth, reduces glare, and enhances the building's aesthetic.

Inside, a neutral colour palette and crisp design give the spaces a distinguished vibe, while sky terrace gardens on every floor from the second to the eighth emphasise the biophilic theme. Despite challenges with site access and stringent security requirements owing to an adjacent data centre, the project successfully met all regulations, ensuring seamless integration with its surroundings.



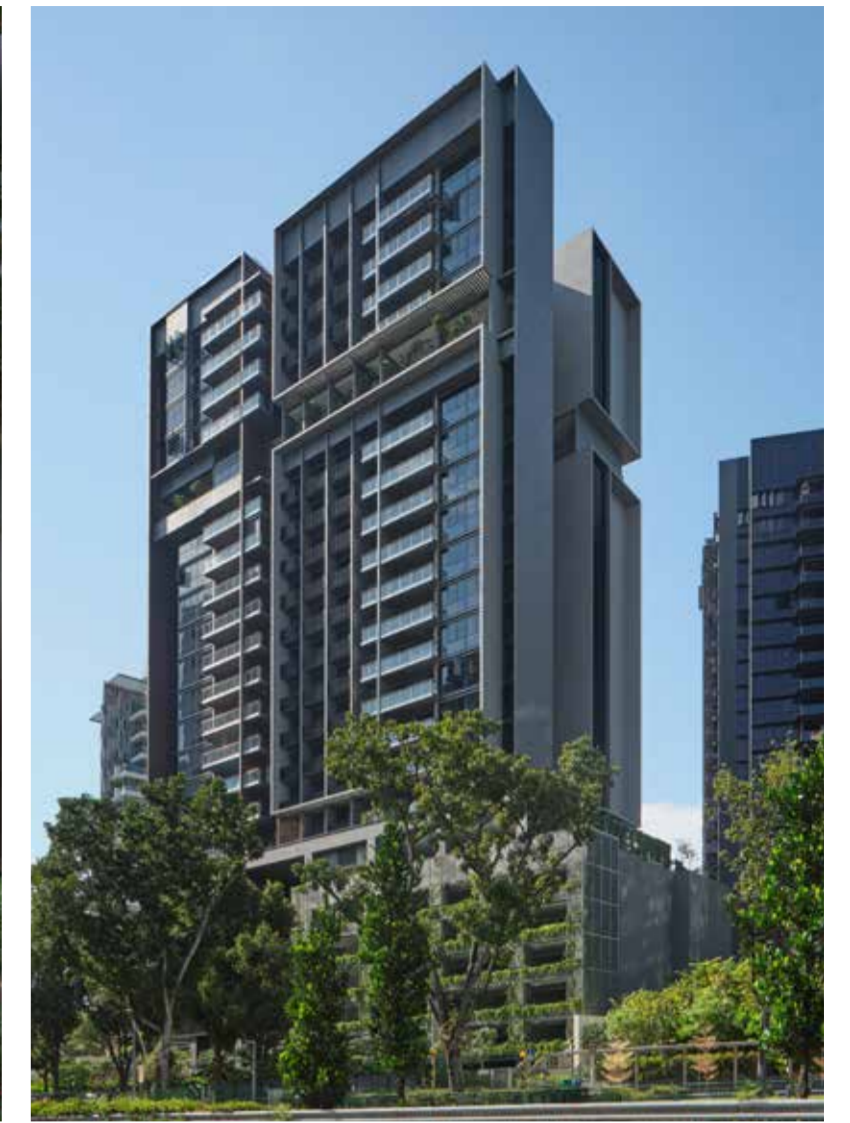
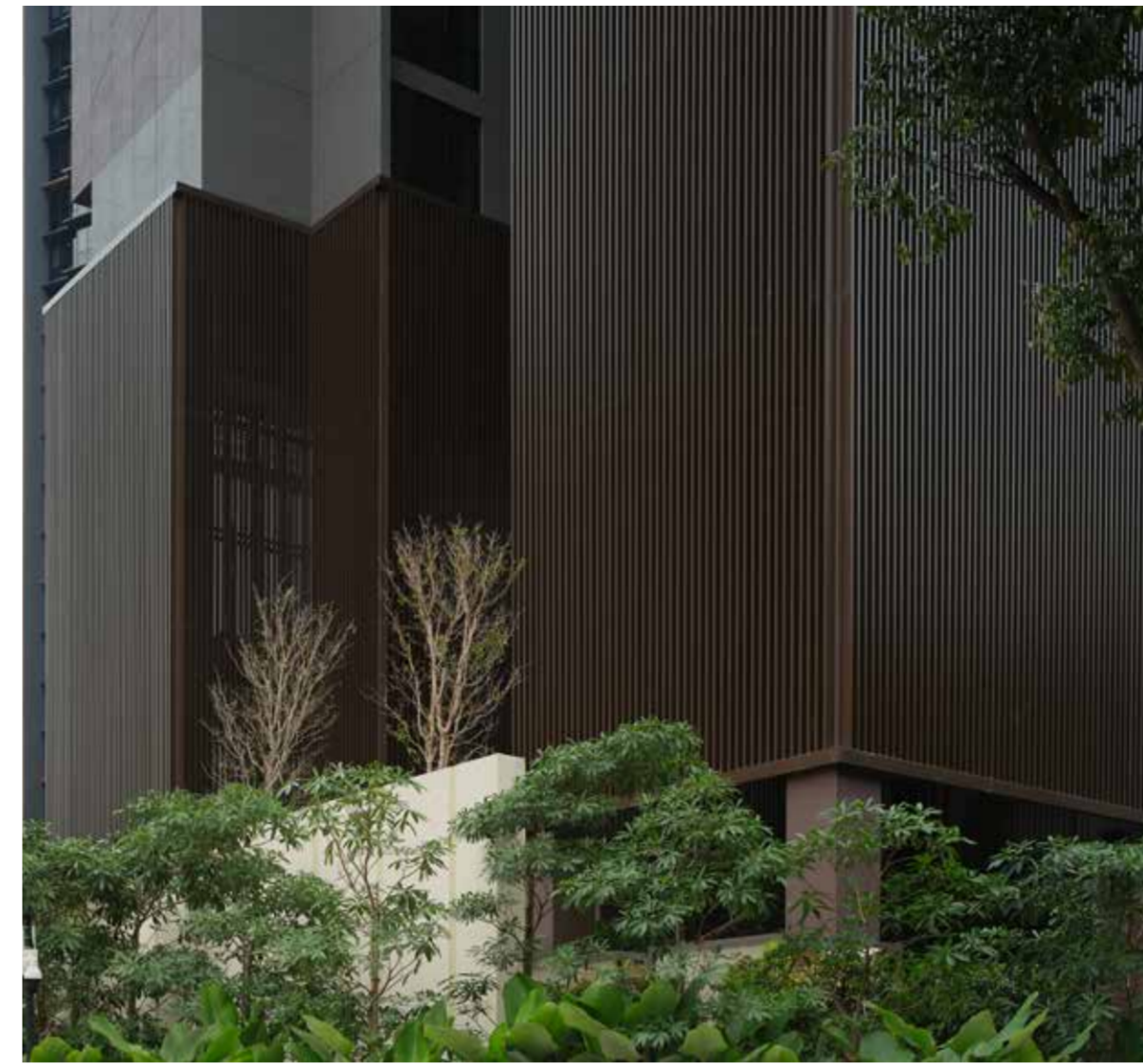


ONG&ONG Group

The Atelier

A symbol of contemporary luxury in the heart of Singapore, The Atelier features sleek design and stunning vistas, offering residents a refined yet comfortable living experience. [Singapore](#)

360 - Principal Leads and Team Members:
 Steven Low and Tong Su Ling *Architecture*
 Stanley Tan, Gary Soh and Ryan Lim *Wayfinding*



The Atelier in Singapore is a luxury residential development located in District 9, near Newton, renowned for its sophisticated design and modern urban lifestyle. Blending contemporary elegance with thoughtful functionality, The Atelier is a testament to premium vertical living.

The Atelier's sleek, minimalist architecture is defined by clean lines and an understated sensibility. Its high-rise structure maximises space while offering panoramic views of the city, providing a sense of exclusivity in the heart of Singapore. Within the apartments, materials such as marble, wood, and metal are used throughout, creating a refined yet comfortable living environment. Spacious layouts and large windows bathe the interiors with natural light, enhancing a sense of openness.

The Atelier's striking facade combines glass, steel, and concrete, creating a harmonious connection between

the interior and exterior while ensuring durability. The development is also equipped with a range of amenities, including a swimming pool, gym, and landscaped gardens, offering residents a peaceful retreat. Sustainable design elements, such as energy-efficient systems and eco-friendly materials, are integrated into the architecture, contributing to the building's responsible design.

Engaged to develop an environmental wayfinding strategy, IMMORTAL devised a system for an elegant and aesthetical experience. The design strategy was carefully curated to blend with the development's sleek aesthetic. Earthy nutmeg tones featured in the architecture are mirrored in the wayfinding signage, evoking warmth and comfort. High-quality materials, such as brushed metal and glass, were used to maintain a consistent visual language across the property.

The strategic placement of signage at key decision points, including entrances, lift lobbies, and corridors, ensures intuitive navigation throughout the development. In addition to traditional signage, The Atelier uses subtle visual and spatial cues—distinctive lighting, material transitions, and architectural features—to guide residents and visitors seamlessly. Thoughtful lighting design enhances both visibility and safety, complementing the elegant ambiance.

The Atelier exemplifies contemporary luxury living, combining sleek design, high-end interiors, and functional wayfinding to create an urban sanctuary. Its well-integrated wayfinding system ensures that both residents and visitors enjoy a seamless blend of luxury, comfort, and convenience within this sophisticated development.

The Atelier



Thiso Mall Truong Chinh

Blending contemporary style with functionality, Thiso Mall Truong Chinh - Phan Huy Ich is designed by ONG&ONG for dynamic urban living. Vietnam

360 - Principal Leads and Team Members:
Hoang Huu Dung Huynh Viet Hoang Architecture
Dang Hoang Tung C&S Engineering
Ryan Huynh Ngoc Nghia M&E Engineering



Nestled conveniently in the heart of Go Vap, District 12, and Tan Phu districts of Ho Chi Minh City is Thiso Mall Truong Chinh - Phan Huy Ich. With architecture by ONG&ONG, the development stands as a modern retail hub, blending contemporary design elements with practical functionality to create a vibrant commercial space.

Situated in a bustling district and spanning approximately 161,458 sq. ft., the mall includes two blocks. The first block is a four-storey building that houses an Emart supermarket, cinema, and conference centre while the second block is a two-storey car showroom.

The exterior facade of the shopping centre comprises a striking combination of glass, steel, and concrete, reflecting a sleek aesthetic. At the main entrance, an expansive glass canopy serves as a grand, welcoming focal point. The interior layout is designed with a focus on open spaces and fluid movement. Wide corridors and atriums create a sense of openness, while strategically placed escalators and elevators ensure efficient vertical circulation across the multiple floors.

Retail units are designed with flexibility in mind, allowing for customisation according to tenant requirements. Lofty ceilings and large storefronts enhance the visibility and attractiveness of the retail spaces, encouraging window shopping and foot traffic.

Common areas are spacious and thoughtfully designed to provide comfort and convenience. These areas are adorned with indoor greenery and modern furnishings, creating a pleasant environment for relaxation and social interaction. In addition, there are attractions such as a musical fountain, mascot sculpture, and lush landscaping all around the mall.

Thiso Mall Truong Chinh - Phan Huy Ich's architecture seamlessly blends functionality, creating an entertaining and engaging retail environment with modern design, global brands, and attractive spaces for families, complementing the dynamic lifestyle of its urban patrons.



Thiso Mall Trường Chinh - Phan Huy Ich tọa lạc tại vị trí đắc địa - trung tâm quận Gò Vấp, Quận 12 và Tân Phú, Thành phố Hồ Chí Minh. Với thiết kế của ONG&ONG, khu phức hợp này là một trung tâm bán lẻ hiện đại, kết hợp các yếu tố thiết kế đương đại với chức năng thực tế để tạo ra một không gian thương mại sôi động.

Nằm trong một khu vực sầm uất và rộng khoảng 161.458m2, trung tâm thương mại bao gồm hai khối nhà. Khối nhà đầu tiên là tòa nhà bốn tầng bao gồm siêu thị Emart, rạp chiếu phim và trung tâm hội nghị trong khi khối nhà thứ hai là phòng trưng bày ô tô hai tầng.

Mặt tiền bên ngoài của trung tâm mua sắm bao gồm sự kết hợp ấn tượng giữa kính, thép và bê tông, phản ánh tinh thần mỹ thuật cao cấp. Lối vào chính có mái che bằng kính trong suốt, rộng rãi để tạo điểm nhấn chào đón khách hàng. Bố cục bên trong được thiết kế tập trung vào không gian mở và chuyển động uyển chuyển. Hành lang và giếng trời rộng tạo cảm giác thoáng đãng, trong khi thang cuốn và thang máy được bố trí

nhằm đảm bảo giao thông theo chiều dọc hiệu quả giữa các tầng.

Các cửa hàng bán lẻ được thiết kế có tính linh hoạt, cho phép tùy chỉnh theo yêu cầu của người thuê. Trần nhà cao và mặt tiền cửa hàng lớn làm tăng khả năng hiển thị và sức hấp dẫn của các không gian bán lẻ.

Các khu vực công cộng rộng rãi và được thiết kế chu đáo để mang lại sự thoải mái và tiện lợi. Những khu vực này được trang trí bằng cây xanh trong nhà và đồ nội thất hiện đại, tạo ra một môi trường dễ chịu để thư giãn và giao lưu. Ngoài ra, còn có các điểm tham quan như đài phun nước âm nhạc, linh vật và cảnh quan xanh tươi xung quanh trung tâm mua sắm.

Kiến trúc của Thiso Mall Trường Chinh - Phan Huy Ich là sự kết hợp nhuần nhuyễn giữa chức năng, tạo nên một môi trường mua sắm giải trí hấp dẫn với thiết kế hiện đại, những thương hiệu toàn cầu và không gian hấp dẫn cho gia đình, hoàn thiện lối sống năng động của khách hàng thành thị.



BCA Braddell Campus

IMMORTAL's unified wayfinding strategy at the BCA (Building and Construction Authority) Braddell Campus blends modern design with functional elegance to enhance the visitor journey and brand identity. Singapore

Principal Leads and Team Members:
Stanley Tan, Gary Soh,
Gisela Ryani and Ryan Lim Wayfinding

IMMORTAL was engaged to reimagine wayfinding for the BCA Braddell Campus, aiming to modernise its signage system while enhancing the overall visitor experience. The project involved developing a cohesive vehicular and pedestrian wayfinding system, unified under a branding strategy that reflects the BCA's identity and vision.

A bold and unique approach was adopted for the wayfinding signage, with alphabetical identifiers prominently marking each building, facilitating seamless navigation across the sprawling campus. A secondary identity system, based on color-coded zones and blocks, further aids in orientation, with the BCA logo subtly etched onto every sign, reinforcing brand consistency.

One standout feature of this project is the use of parametric ribbing in the signage design. This adds a distinct character to the campus, imbuing it with a modern and futuristic personality. Additionally, the sleek vehicular signage pylons, featuring inset lighting, not only guides visitors but also enhance the aesthetic appeal of the campus.

Complementing these wayfinding elements are branded place-making features that create a unique spatial narrative, enriching the visitor's journey through the campus. This holistic approach improves navigation and reinforces the BCA's identity, making it an integral part of the visitor experience.



Wayfinding



Taipei Fubon Bank



SCA Design

Taipei Fubon Bank, Guoco Tower

With its open-plan layout, vibrant colours, and natural light, Taipei Fubon Bank office is a well-designed space that effectively combines modern aesthetics with biophilic elements. [Singapore](#)

Principal Leads and Team Members:

Elli Wang, Wafi Afandi and Cheyenne Chew
Workplace Interior



Taipei Fubon Bank is one of Asia's leading banks, offering financial services such as corporate and private banking as well as wealth management. For its Singapore office, SCA Design adopts a stylish approach to its design thinking, where conventions are strategically eschewed for a more homely and immersive office environment.

Located in the central business district with sweeping views of the city's skyline, the design of the office fosters collaboration while creating an inviting, dynamic atmosphere for its employees. The office interiors incorporate a vibrant palette with splashes of colour across various elements of the space. In the pantry and lounge area, warm orange and teal seating complements light wood finishes, bringing a cozy yet modern feel. Hanging greenery above the island bar adds a refreshing biophilic touch, fostering a welcoming environment for informal gatherings or casual conversations over coffee.

In contrast, the boardrooms embrace a more formal aesthetic. Elegant orange leather chairs surround the central table, offering both comfort and style. The minimalistic design allows the stunning views of the

city to take centre stage. Rounded corners and soft lighting further enhance the sophisticated ambience. SCA Design's incorporation of natural elements ensures the space aligns with sustainable design principles, reflecting the bank's commitment to environmentally conscious solutions. The open-plan layout encourages collaboration and fosters a sense of community among employees, while biophilic elements, such as plants, moss walls, and living walls, bring nature indoors and enhance the overall atmosphere.

Bright colour accents, like orange and green, inject a playful energy into the space, complementing the sleek, modern furniture that ensures both comfort and functionality. Large windows flood the office with natural light, creating a bright environment that boosts employee mood and productivity. Additionally, privacy screens between workstations provide a thoughtful balance, allowing for both open communication and individual focus.

The seamless integration of contemporary aesthetics with thoughtful spatial planning makes this office an inspiring workplace.



SCA Design

GESS Social Hub

This space is a colourful, welcoming, and inspiring embodiment of how educational institutions can inject modernity and playfulness into their space. [Singapore](#)

Principal Leads and Team Members:

Elli Wang, Wafi Afandi and Cheyenne Chew
Workplace Interior

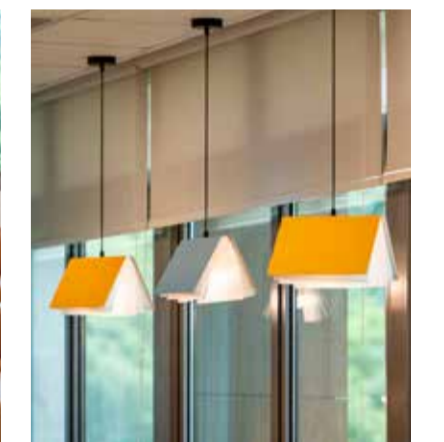


The German European School Singapore (GESS) was established in 2018 and is home to 1,850 students from over 60 nationalities. Recently, the campus underwent refurbishment to transform an existing space into a social space dedicated to its high school students and the university counselling department.

SCA Design was entrusted with creating a welcoming environment for the GESS Social Hub, blending comfort with functionality. The brief called for a dynamic space to serve as a social hub for students, as well as two offices to accommodate the University Counselling and Academic Management team.

In response to this brief, SCA transformed the space into a vibrant, modern, and collaborative hub aimed at fostering interaction, creativity, and learning. The hub features distinct areas for social breaks and collaboration, allowing students to relax, study, and socialise. Additionally, the design facilitates engagement with university counsellors, visiting university representatives, and the management team.

SCA turned to Berlin Art for their inspiration by incorporating minimalist aesthetics with clean lines, neutral tones, and uncluttered spaces. Large windows allow natural light to flood the space and bold colours and shapes introduce a playful, energetic vibe, and add a touch of personality to the space. The open-plan layout and varied seating options create a welcoming, stimulating setting for students, while semi-private alcoves provide areas for relaxation or group work. The combination of earthy tones and sleek design elements offers a contemporary yet comfortable atmosphere.



The neon lights, along with the fun design elements like the Pac-Man graphic, add a modern, quirky edge, making the social hub an attractive spot for both relaxation and interaction. The wall in green hues, potted plants, greenery above the island table and the large windows bring the nature in, creating a biophilic atmosphere. The glass partition provides a glimpse into the vibrant interior of the social hub, inviting students to enter and explore the space. This multi-purpose area reflects GESS's commitment to providing a conducive and flexible learning environment where students can thrive socially and academically.



GESS Social Hub

Engineering



Rankine&Hill Singapore

One Holland Village

Experience the future of urban living at One Holland Village, where upscale amenities, smart technology, and green spaces combine to create a unique and vibrant lifestyle destination.
Singapore

Principal Leads and Team Members:
Rankine&Hill M&E Engineering



One Holland Village is a prominent mixed-use development located in the heart of Singapore, in the Holland Village neighbourhood. This innovative project, jointly developed by Far East Organization in partnership with Sino Group and Sekisui House, is designed to be a vibrant, integrated community that combines residential, retail, office, and green spaces to create a dynamic urban hub.

One Holland Village exemplifies URA's plans for Holland Village to be one of Singapore's endearing identity nodes and a distinct lifestyle destination. The landscaping around the complex is thoughtfully designed to incorporate green spaces, pocket parks, and pedestrian-friendly walkways, creating a tranquil and aesthetically pleasing environment amidst the urban setting. The development is scheduled for completion in two phases by end of 2024.



There are two towers offering three living concepts under the One Holland Village Residences umbrella: Quincy House is a 255-unit serviced apartment capped with Quincy Private Residences – 27 exclusive units with private lifts; the 248-unit Sereen with one- to-three-bedroom apartments are housed in the other block; and Leven is a row of low-rise abodes with third-storey units linked to roof terraces via spiral staircases akin to old shophouses. The buildings are designed with energy-efficient features, such as rainwater harvesting, intelligent lighting, and smart building management systems.

These technologies not only reduce the environmental footprint but also enhance the overall living experience for residents. One Holland Village offers a wide array of facilities to cater to the diverse needs of its residents and visitors. These include a swimming pool, fitness centre, communal gardens, and function rooms. The development also features an extensive retail component, including a curated mix of shops and dining establishments, creating a vibrant atmosphere.

This forward-thinking development embodies the essence of modern urban living in Singapore. With a mix of residential, retail, and green spaces, it has successfully created a dynamic, inclusive, and sustainable community that caters to the evolving needs of the urbanites.

Rankine&Hill Singapore

Parc Clematis

Located in the heart of Clementi, Parc Clematis stands as a prestigious development offering residents a harmonious blend of luxury, comfort, and convenience.
Singapore

Principal Leads and Team Members:
Rankine&Hill M&E Engineering

For this project, the developers had engaged Rankine&Hill for their M&E expertise. Rankine&Hill engineered the ventilation and air conditioning systems to deliver optimal thermal comfort. Focusing on energy efficiency and environmental sustainability, the team also designed the electrical systems as well as the design and implementation of plumbing systems, including water supply and waste management.

Other areas include fire protection systems and energy management solutions to aimed at optimising energy use and supporting the development's sustainability goals. Renewing the *kampung* spirit with contemporary communal living, Parc Clematis boasts approximately 400,000 sq. ft. of facilities, providing residents with ample space and greenery for leisure activities with loved ones. With its luxurious living experience and lush green spaces, Parc Clematis' blend of modern living, convenience, and privacy makes it a coveted destination in the vibrant heart of Clementi.

Developed by the SingHaiyi Group, Parc Clematis offers distinguished living experience with its array of amenities and facilities, while combining the space of luxurious homes with sophistication and exclusivity. At 1,468 units and 633,644 sq. ft. of land area, Parc Clematis is a massive development comprising nine residential blocks, two-storey bungalows, semi-detached units and strata terraces. With its captivating presence within a private residential enclave, it has garnered significant attention and anticipation from prospective homeowners.



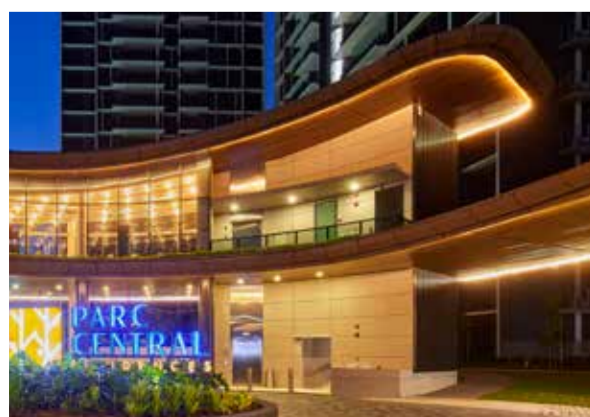
Rankine&Hill Singapore

Parc Central

Discover the perfect blend of luxury, comfort, and community at Parc Central, an Executive Condominium by Singapore's Housing Development Board (HDB)
Singapore

Principal Leads and Team Members:
Rankine&Hill M&E Engineering

Nestled in the heartland of Tampines in Singapore, Parc Central is more than just an Executive Condominium development—it's a thoughtfully-crafted oasis where contemporary living meets aspirational finishings and functionality. Designed to offer residents a perfect blend of comfort, convenience, and elegance, this expansive project features 11 sleek blocks, each 16 storeys high. Together, they form a vibrant community where urban sophistication thrives amidst lush greenery.



The architectural vision behind Parc Central is nothing short of meticulous. Each block has been strategically positioned to welcome natural light and gentle breezes, ensuring an airy, sustainable living environment. At the core of this development lies the expertise of Rankine&Hill, whose M&E engineering contributions bring the project to life.

Their careful integration of modern systems ensures that every detail of Parc Central caters to the highest standards of energy efficiency and sustainability. From the HVAC systems that deliver optimal indoor comfort to the carefully curated lighting that enhances both communal and private spaces, Rankine&Hill's touch is evident throughout.

Beyond the engineering and architectural excellence, Parc Central is home to an array of communal facilities designed to enrich the lives of its residents. From shimmering swimming pools that invite relaxation to fully-equipped fitness areas encouraging an active lifestyle, every detail caters to the health and well-being of its community. The landscape deck, a beautifully designed communal hub, invites residents to gather, relax, and connect—fostering a sense of community in an environment as visually striking as it is functional.

Parc Central is not just a place to live; it's a lifestyle, a harmonious blend of elegance, innovation, and community.

Engineering



Rankine&Hill Singapore

Sengkang West Bus Depot

Sengkang West Bus Depot's innovative design combined with its future-proof approach to EV adoption, make it a critical component in Singapore's ongoing efforts to improve the efficiency, safety, and sustainability of bus operations. [Singapore](#)

Principal Leads and Team Members:
Rankine&Hill M&E Engineering



A significant portion of the depot's infrastructure has been tailored to support the increasing adoption of electric vehicles (EVs). The depot can accommodate over 200 electric buses, ensuring the facility is future-ready for further adoption of electric vehicles. Given the depot's reliance on electricity, power infrastructure is a critical aspect of the design. To ensure operational continuity during unforeseen power outages, provisions for the deployment of mobile generators were provided.

Fire safety measures are also a major focus, particularly due to the risks associated with EV fires. To address this, a foam suppression system is installed throughout the facility, offering highly effective firefighting capabilities. It is supported by other fire mitigation measures such as dividing the bus parking areas into zones using water curtains and sprinklers. These water curtains act as thermal barriers to prevent the spread of fire and heat to adjacent zones.

The depot also includes an eight-storey living quarters, designed to accommodate bus captains and operational staff. The quarters are built with a co-living space concept that are organised into clusters, with each cluster designed to accommodate nine residents. Each cluster is self-contained with its own kitchen, toilet, laundry area and bedrooms. This design was influenced by the coronavirus pandemic, which highlighted the importance of social distancing and isolation to reduce the transmission of illnesses.

The Sengkang West Bus Depot that was awarded the BCA Green Mark Platinum significantly boosts Singapore's public transport system by improving bus fleet management and maintenance efficiency, benefitting commuters and supports the city's long-term infrastructure growth.



Rankine&Hill Singapore

Khatib Polyclinic

With the opening of Singapore's latest healthcare facility, it is set to play a pivotal role in advancing health promotion and disease prevention, aligning with the nation's proactive shift towards preventive care. [Singapore](#)

Principal Leads and Team Members:
Rankine&Hill M&E Engineering

Khatib Polyclinic is a modern healthcare facility designed to meet the growing needs of the community. The ninth polyclinic under the National Healthcare Group Polyclinics, it focuses on delivering quality primary healthcare and is part of the nation's larger initiative to enhance and expand medical services.

Rankine&Hill played a pivotal role in this project, overseeing the M&E engineering works that are essential to the building's functionality and comfort. The team was responsible for installing a suite of mechanical and electrical systems that ensure day-to-day operations run smoothly, considering the unique nature of healthcare delivery in Singapore including local regulations, tropical design requirements, international healthcare design guidelines and specifications, and drawing on best practices worldwide.

Special attention was given to the sustainability aspect of the M&E works, incorporating energy-efficient solutions that reduced the polyclinic's operational costs while maintaining optimal comfort for both patients and staff. The combined efforts have made Khatib Polyclinic a state-of-the-art facility, designed to deliver top-tier healthcare services in a safe and efficient environment.



Rankine&Hill Singapore

Leedon Green

Leedon Green's luxurious yet sustainable living environment elevates the quality of life for its residents. [Singapore](#)

Principal Leads and Team Members:
Rankine&Hill M&E Engineering



Inspired by the wonder of terraced landforms, Leedon Green is a bold architectural interpretation of natural splendour. Located at Leedon Heights, a coveted address within Singapore's prime District 10, its location is all about accessibility: Orchard Road and the Central Business District are just minutes away, while the serene Botanic Gardens (a UNESCO World Heritage Site) and chic Dempsey Hill enclave are practically on its doorstep.

Leedon Green (formerly Tulip Gardens) features a timeless architectural style characterised by alternating terraces of verdant greenery, water cascades, and undulating terrain. The residence is jointly developed by Yanlord Land Group and MCL Land. Rankine&Hill was handpicked to provide their mechanical engineering expertise, and they teamed up with others to design the infrastructure for the development, and craft the mechanical, electrical and fire safety systems in the complex.

Embracing sustainability as a key driver, the design team looked for creative low-energy solutions. The electrical systems are designed with energy efficiency in mind, incorporating smart technology to manage lighting, power distribution, and other electrical needs harmoniously.

These systems allow for flexibility and ease of maintenance, ensuring minimal disruption to residents. Additionally, the development includes modern fire protection systems, security infrastructure, and water supply and drainage systems that meet the highest safety standards.

Featuring seven distinct towers, Leedon Green offers a collection of 638 1- to 4-bedroom apartments and Garden Villas. An abundance of curated open and landscaped spaces that offer natural splendour and comfort in equal measure, Leedon Green reflects a bold residential design that creates a truly uplifting environment.

COMMUNITY EMPOWERMENT

“The best way to find yourself is to lose yourself in the service of others.”
Mahatma Gandhi

The ONG Foundation in Singapore was established with a deep-rooted belief in giving back to the community and creating a lasting impact. Founded by the visionary leaders of ONG&ONG, the foundation channels efforts toward meaningful causes in the areas of Healthcare, Education and Arts.

At the heart of the ONG Foundation's mission is the desire to uplift communities and drive positive change through innovative solutions. The foundation focuses on addressing pressing societal challenges and is deeply invested in nurturing the next generation. ONG Foundation has become a beacon of hope and transformation in Singapore.



GOFLOW

GoFlow's Bicycle-Powered Solution for Clean Water Enters Ugandan Youth Homes

Recently, with the help of World Youth Horizons, a global non-profit organisation, GoFlow was provided to two orphanages in Uganda. Through this contribution, the children in Vumbula Youth Home and Heavenly Blessings are now able to access clean water. GoFlow is a lightweight device which can be easily deployed with a bicycle and can produce up to 4,000 litres of fresh water a day. GoFlow is also set to expand into Nigeria, aiming to provide access to clean, safe drinking water. By providing access to clean, drinkable water, GoFlow stowards a brighter future for communities, where drinkable water will no longer be a scarcity.

GoFlow Making a Positive Impact in Cambodia

In Cambodia, together with Water and Healthcare (WAH) Foundation, GoFlow transforms freshwater into potable water. With a mission to improve lives and conditions of rural communities, WAH started working in Kampong Chhnang, which has a population of 550,000, to address the lack of access to clean drinking water. Eight units of GoFlow have been deployed in the Krang Dey Meas district and Kampong Chhnang city to help villagers access clean water, and more are on the way.



SPORTS SPONSORSHIP

ONG&ONG proudly sponsored three talented Singaporean swimmers—Amanda Lim, Letitia Sim, and Levenia Sim—in their journey towards qualifying for the 2024 Paris Olympics. The swimmers have been dedicated to representing Singapore at the highest level of competition. While Amanda Lim narrowly missed out on qualification, both Letitia and Levenia Sim successfully secured their spots in the prestigious global event, marking an exciting milestone in their athletic careers and a proud moment for the nation.



CHARGE+

On the Fast Track to Lead EV Infrastructure Growth with \$8M Funding

Charge+, a Singapore-based electric vehicle (EV) charging operator, has completed Series A funding round with \$8 million raised. Series A is led by TRIVE Venture Capital with Christopher Quek joining the Charge+ board, and with TNB Aura leading the recent Series A2 round. The funds raised will support Charge+'s ongoing efforts to accelerate the expansion of its EV charging infrastructure throughout Southeast Asia. In addition to building its own infrastructure, Charge+ will partner with other regional EV charging operators to expand the network. Such roaming arrangements had been signed with Malaysia's TNB and ChargeSini, Thailand's Electricity Generating Authority of Thailand and Indonesia's PT PLN so that Charge+ app users can conveniently access a wider pool of EV chargers. By 2030, Charge+ aims to deploy 30,000 EV charging points globally and contribute meaningfully to advancing electric mobility adoption in the region.

CHARGE+ Charts Its Map Across Asia

Charge+ continues to make significant strides in its mission to implement a 5,000km EV charging highway across Southeast Asia, with plans to deploy 30,000 charging points globally by 2030. Recent milestones include the launch of a 120kW Turbo DC charger at Skudai R&R Southbound, a key station along Malaysia's North-South Highway, and the opening of a 120kW DC charger at Sathon, in the heart of Bangkok's CBD. Expansion in Thailand includes future stations in key areas such as Pattaya and Phuket. In Malaysia Charge+ launched its largest EV charging cluster in Iskandar Puteri, with plans to install 800 charging points across Johor by 2030.

In Bali, Charge+ unveiled a new DC charging hub to support Blue Bird electric taxis, contributing to Bali's EV ecosystem. In Vietnam, a partnership with Porsche will see a 1,700km EV charging network developed, with 17 ultra-fast charging stations planned, while two sites are already operational in Hanoi and Saigon. Additionally, Charge+ has partnered with Ch. Pattana in Thailand to advance the country's electric taxi infrastructure. These initiatives reflect Charge+'s unwavering commitment to sustainable mobility across the region.



KNOWLEDGE SHARING

Pushing Boundaries with BeyondX

The X Forum that was held recently marked a milestone for the technology and innovation sector, unveiling a new and expanded direction for the BeyondX initiative. It signals the start of many other conversations on how to collectively push the envelope to co-create and bring creativity and technology together. Speakers at the X Forum included BCG X's Robin Weston, IMDA's Joanne Teh and Autodesk's Tushar Nath. Set to open at 21 Keppel Road, BeyondX Lab is designed to support the growth of startups and the integration of cutting-edge technologies in the built environment, fostering a sustainable and innovative urban future.



ONG&ONG CEO Shares Vision of Bringing Singapore's Affordable Housing Model to Vietnam

Recently, the Association of Architects of Ba Ria – Vung Tau Province had organised a seminar titled, “Experience in implementing the social housing project of ONG&ONG Group in Singapore – Lesson learned in Vietnam” where David Ching Heng Ho, CEO of ONG&ONG Vietnam was one of the speakers. David spoke about social/affordable housing and how he wants to provide a home for everyone in Vietnam. He has observed that the country has many needs and affordable housing is one of it and architects need to work, design, and build for the common people.



IMMORTAL's Emeric Lau Shares Insights on Dementia-Friendly Wayfinding at the SIA-CSR Talk Series

The CSR Committee from the Singapore Institute of Architects recently held a sharing session titled “Designing for Inclusivity - Singapore: Universal City in The Making”. As Singapore transforms progressively into a city designed to be accessible for everyone, including people with disabilities, seniors, families, and individuals from diverse cultural backgrounds. Emeric Lau from IMMORTAL spoke on the topic of “Designing for the Elderly and Dementia Patients” and shared the process of conceptualising and developing a tailored design strategy for wayfinding across the estates.



GRACE LEO TALKS FUTURE OF LUXURY HOSPITALITY

London-based Grace Leo is a renowned international hotel developer and brand strategist with over 30 years of experience in luxury hospitality. Grace is celebrated for her ability to identify and transform high-potential ventures, focusing on start-ups, brand revitalisation, and strategic turnarounds. As the founder of GLA Hotels Paris and Grace Leo Consultancy London, she has led numerous high-profile projects across Europe and the USA, including the successful redevelopment of Ten Trinity Square into a flagship Four Seasons Hotel. Known for her visionary leadership, she has a keen eye for integrating branding with unique market positioning and has been instrumental in creating luxury hospitality portfolios globally.

Her first major independent project, The Guanahani Hotel at St. Barthélemy was acclaimed as one of the world's great luxury hideaways, whilst the Hotel Montalembert in Paris, which opened in late 1989, was one of the seminal properties in the design hotel movement of the current decade. She has also served as a board member for several prestigious companies, leveraging her expertise in governance, compliance, and strategic direction.

This Q&A explores how immersive experiences, sustainability, and technology are redefining hospitality, and their impact on the future of hotels and travellers.

As part of the hotel industry and your role within the hotel, how do you think travel—and hotel stays in particular—will change in the coming years?

GL: As generational preferences shift, travellers will gravitate toward two hotel styles: tech-driven, minimal-service options with lower prices, and higher-priced, full-service experiences with personalised human interaction.

How are immersive experiences and unique offerings reshaping hospitality? Are they relevant only to the upcoming generation or to all generations?

GL: Almost everything has been explored, yet a minority of adventurous travelers still desire immersive experiences that few have attempted or can afford. Look at Jeff Bezos developing his space travel for the exclusive few who want the privilege to participate in the ultimate experience that others would be envious of.

At the same time, typical travellers—ranging from retirees exploring archaeological digs to young couples seeking polar bears in the Arctic—are driven by curiosity and the desire to learn. This transcends generations and geography, making



immersive experiences appealing to anyone with a sense of adventure. So, the answer is a keen sense of curiosity and the desire to explore and learn – are good criteria for the discerning traveller.

How does the design play a role in sustainability consideration in the present and future?

GL: While much has been explored, a select group of adventurous travellers still seeks rare, immersive experiences, like Jeff Bezos' space travel, reserved for the privileged few. Meanwhile, typical travellers are driven by curiosity and a desire to learn. This curiosity transcends age

ONG&ONG GROUP HOSPITALITY JOURNEYS THROUGH DESIGN

Crafting a unique narrative concept for each hospitality project is fundamental to ONG&ONG's successful design approach. From the big picture to the smallest detail, the story informs and drives the design. Our vast experience allows us to approach each design as an opportunity to choreograph a personalised guest experience through attention to design and detail. From arrival to departure, ONG&ONG's collection of hospitality projects fosters relationships that ultimately empower meaningful connections between people and take guests on a journey that resonate.

THE IMMORTAL ROUND TABLE

Brand engagement and environmental wayfinding consultancy IMMORTAL is merging design excellence with strategic communication by introducing the IMMORTAL Round Table, a global panel of experts from various industries to offer unique insights. Drawing on her extensive expertise, Grace Leo joins the panel to share her perspectives on the future of luxury hospitality.

and geography, making immersive experiences appealing to any discerning holiday-goer.

Research shows that younger travellers are prioritising experiences over material possessions, requiring a shift in hotel marketing strategies.

How do you respond to this? GL: The shift towards prioritising experiences over material possessions presents a valuable opportunity for hoteliers to attract younger travellers. They can tailor their marketing strategies to highlight the experiential aspects of their accommodations, amenities, and services, emphasising personalised and authentic experiences that resonate with this demographic. Additionally, incorporating elements of sustainability, technology integration, and local culture will further resonate with this evolving demographic.

How will the hotel industry help older generations adapt to the latest smart technology while considering younger travellers' needs?

GL: In the metaverse, hospitality could offer virtual resorts, digital concierge services, and interactive events, creating customizable experiences. Meanwhile, space travel to the Moon or other planets will appeal to those seeking extraordinary adventures. Personally, I envision a future where we “beam” across the globe in minutes, like in Star Trek—London to Singapore in 10 minutes! I hope to witness such advancements in my lifetime.

In conclusion, there is still strong demand for the uncompromising standards of traditional luxury in hotels. The ultimate luxury is having dedicated staff focused on guest satisfaction, something technology cannot replace. As labour costs rise, mid-range hotels will lean more on technology for efficiency, while only super-luxury hotels will maintain the personalized service that discerning guests expect.



PROJECTS
A Home in Harmony: The Elegant and Natural Design of LR-House

Promising a haven for personal expression, LR-House sets the bar high where elegance, form, and function merge effortlessly. Perched on a corner plot, this three-story residence is enveloped in lush greenery. The interior unfolds to reveal views of a sparkling plunge pool and a Japanese-inspired zen garden. Neutral tones and minimalist design imbue the spaces with a sense of peace. The first floor includes a living room seamlessly connected to the pool and garden, and a dining area highlighted by a state-of-the-art kitchen. With a thoughtful integration of architecture, interior design, and landscaping, LR-House's curated material palette ensures its aesthetic appeal is both sophisticated and timeless.



PROJECTS
Designing Connectivity via the Tengah Bus Interchange in Singapore

Designed by ONG&ONG, the Tengah Bus Interchange aligns with Tengah estate's biophilic design and sustainability goals. The architecture uses materials typical of residential projects, fostering a sense of community while supporting smooth foot traffic through clear wayfinding and open spaces. Internal courtyards and green peripheries bring nature into the concourse, creating a pleasant environment. The interchange offers barrier-free access, a dedicated priority queue zone with seating at boarding berths, as well as wheelchair-accessible toilets, and a baby care room.



PROJECTS
SingHaiyi Group Teams Up with Rankine&Hill for Parc Clematis

Boasting 1,468 units and with 633,644 sq. ft. of land, Parc Clematis is a sizeable project by any measure. Rankine&Hill were engaged for their M&E expertise. This project balances commercial performance, usability, health and wellness, comfort, and sustainability. Developed by the SingHaiyi Group, Parc Clematis in District 5 offers a distinguished living experience with its array of amenities and facilities. With its lush green spaces and prime location, the luxury condominium blends modern living, convenience, and privacy, making it a coveted destination in the vibrant heart of Clementi.



INSIGHTS
Ingenuity Creates Limitless Potential for Cities of the Future

Professor Dale Russell, who is globally acknowledged as an interdisciplinary futurist, design practitioner and academician, predicted that the future of cities is everywhere - up, down, underwater, and even in space. She stated that space for cities to grow is already at a premium, and we need radical solutions that would result in the cityscape looking very different from today - they may include the forming of new geographic boundaries of state, nation, land, sea, or planet. Even now, governments and technology companies are engaging architects and designers to rethink the idea of cities, as well as how people interact and live within them. From Saudi Arabia and China to Singapore, Malaysia, and Canada, many designers, architects, and planners are using advanced materials, smart science, and big data to make cities better than ever.



NEWS
Hot off the Press: Download the Latest Issue of 360 Circle Now

The latest issue of 360 Circle is now available for download! This edition covers a broad spectrum of topics, not just within the AEC (Architecture, Engineering, and Construction) industry but also extending to other sectors transformed by smart technology. Dive into insightful articles about the luxury hospitality industry and how it stands to gain from technological advancements, showcasing the evolution of a luxury experience. Additionally, explore the concept of disruptive leadership and how it enables organisations to stay ahead of the curve. Discover all these and more in this thought-provoking issue.



NEWS
Tan Wei Sheng Makes the Cut in Singapore Business Review's Top Architects Under 40

Singapore Business Review has just released its "Singapore's most outstanding architecture professionals under 40" list and one of our very own made the list this year. Tan Wei Sheng is experienced across various typologies and has played an important role in the restoration of the 110-year-old National Monument, St Joseph's Church. The list recognises young and award-winning architecture professionals under 40 who contributed to keeping Singapore as one of the world's best-developed and most sustainable cities.

ENGINEERING



SOLUTIONS FOR LIFE

Our teams at Rankine&Hill are at the forefront of engineering innovation.

With decades of experience in the industry, our engineers consistently deliver novel solutions for every challenge. Merging practicality and imagination with sustainability ensures consistent client satisfaction.



WORKPLACE



A FUTURE THAT WORKS

As end users themselves, the SCA Design team takes pride in crafting people-centric workspaces that empower meaningful interactions.

Melding an awareness of evolving workplace requirements with a keen attention to particular organisational needs, SCA delivers spaces that perform well both now and into the future.



- Building Studies
- Workplace Studies
- Space Planning
- Interior Design
- Project Management
- Sustainability
- Turn-Key Solutions



sca-design.com

NEWS
ArchDaily Spotlights Artyzen Singapore by ONG&ONG

Artyzen Singapore, designed by ONG&ONG, has earned a coveted feature on ArchDaily. This architectural showcase highlights the innovative and aesthetic prowess embodied in the project. ONG&ONG have reinterpreted traditional wisdom to give rise to a modern lifestyle hotel with a lush, garden-cloaked facade. Inspired by the rich culture, colours, and flavours of Singapore, the hotel emerges as a contemporary oasis in the heart of the city. Artyzen Singapore's inclusion on ArchDaily recognises its significance in pushing the boundaries of modern architecture. The Artyzen Hospitality Group is a wholly-owned subsidiary of Shun Tak Holdings Limited in Hong Kong.

PROJECTS
discovermarket's New Space is a Melding of Heritage and Modernity

To achieve the right balance of sophistication, professionalism, aesthetic appeal and comfort, discovermarket handpicked SCA Design, and the team has certainly created a space that ticks the right boxes. SCA were presented with a distinct opportunity to harmoniously combine the past and the present, safeguarding the heritage structure while introducing contemporary design elements. The team used natural finishes such as art brick walls and textured paint, coupled with details to take the office from ordinary to extraordinary. This results in a space characterised by simplicity, open layouts, and a balance of form and function, creating an inviting and adaptable work environment for today's professionals.

- Mechanical
- Electrical
- Civil
- Structural
- Fire Safety
- Environmental



rankine-hill.com



NEWS
Pushing Boundaries with BeyondX

The X Forum that was held recently marked a milestone for the technology and innovation sector, unveiling a new and expanded direction for the BeyondX initiative. It signals the start of many other conversations on how to collectively push the envelope to co-create and bring creativity and technology together. Speakers at the X Forum included BCG X's Robin Weston, IMDA's Joanne Teh and Autodesk's Tushar Nath. They shared their insights on creating resilient innovation ecosystems in workplaces. Also revealed was the BeyondX Lab, a new hub for innovation set to transform smart experiences in built environments. Set to open soon at Keppel Road, BeyondX Lab is designed to support the growth of startups and the integration of cutting-edge technologies in the built environment, fostering a sustainable and innovative urban future.



PROJECTS
Rankine&Hill Provides M&E Services to Khatib Polyclinic

Khatib Polyclinic has officially opened its doors, marking a significant milestone in enhancing healthcare accessibility and services for the local community. This facility is Singapore's 26th polyclinic and Rankine&Hill were entrusted with delivering the M&E services, which has been pivotal in ensuring that the polyclinic meets the highest standards of efficiency, safety, and sustainability. Their role in the Khatib Polyclinic project encompassed a broad scope of M&E services, where a comprehensive approach included HVAC Systems, electrical infrastructure, plumbing and sanitation as well as fire safety systems and sustainability measures.



NEWS
GoFlow Making a Positive Impact in Cambodia

In Cambodia, together with Water and Healthcare (WAH) Foundation and powered by the pedal, GoFlow easily transforms freshwater into potable water. A lightweight device that can be deployed with a bicycle, GoFlow produces up to 4,000 litres of potable water a day. With a mission to improve lives and conditions of rural communities. To address the lack of access to clean drinking water, eight units of GoFlow have been deployed in the Krang Dey Meas district and Kampong Chhnang city to help villagers access clean water.

WAY FINDING

IMMORTAL
Brand Engagement

THE RIGHT DIRECTION
IMMORTAL's wayfinding consultants design and implement systems that enable users of every stripe navigate all manner of developments with ease. Whether through visual icons, physical markers or digital signage, we deliver user experiences that feel seamless and intuitive.

PLACEMAKING THE EXPERIENCE

Designing urban spaces to enhance lifestyles means creating vibrant, engaging experiences. Through smart design themes, placemaking transforms the built environment, enriching a city's fabric.

Planning and Analysis

Wayfinding Strategy

Signage System and Design

Environmental Graphics

Placemaking

immortal.com.sg



PROJECTS
ONG & ONG Collaborate on Eco Ardence Nara Townhouses

Nara, one of the few residential phases in the Eco Ardence township uniquely consists of Garden Homes and Courtyard Homes – otherwise known as townhouses. Eco World Development Group Berhad engaged ONG&ONG Malaysia to design, manage, and oversee the completion of 80 units of 4-storey townhouses. Through meticulous planning, the team navigated some challenges to bring the vision of Nara townhouses to life. The homes sport a spacious, Japanese-inspired aesthetic and offer residents an unparalleled lifestyle experience characterised by great design, convenience, and connectivity.



NEWS
ONG & ONG Vietnam Signs MoU with Southern Institute for Spatial Planning

ONG&ONG Vietnam and the Southern Institute for Spatial Planning have signed a Memorandum of Understanding (MoU) to collaborate on various fronts. Their cooperation entails conducting research and participating in consulting services pertaining to regional planning, socio-economic master planning, and strategic planning. The partnership also aims to foster comprehensive development and exchange of expertise in the fields of spatial planning and urban development.

BRAND ENGAGEMENT

IMMORTAL
Brand Engagement

ARTFUL APPEAL

IMMORTAL crafts distinctive designs that elevate brands, delivering signature experiences that convert customers to advocates for life.

We take an all-round approach with clients in identifying and developing their brand identity, value proposition, and strategy to market.

- Market Insight
- Brand Audit
- Brand Strategy
- Brand Expression
- Brand Management
- Environmental Branding



immortal.com.sg



INSIGHTS
Exploring Key Trends in the Luxury Hospitality Industry

Luxury travel is soaring to new heights, promising unique experiences. It's clear the future of this sector is bright, with emerging trends reshaping the industry. Luxury travel is about indulgence, exclusivity, and personalised experiences tailored to affluent travellers. Key drivers include increased disposable income, the rise of well-heeled millennial travellers seeking meaningful experiences, and the democratisation of online booking platforms. Future trends in luxury travel include sustainable luxury, experiential journeys, digital nomadism, technological integration, and more.

NEWS
Explore COMMERCE III – the Newest Edition of our Anthology Series

Commerce III is a curated collection that showcases exemplary commercial and mixed-use projects across various industries and locations. This volume highlights architectural design, innovative interior spaces, and transformative work environments that reflect the evolving ethos of modern commercial spaces. From Singapore to Vietnam, each project illustrates how design can redefine productivity while creating vibrant, future-ready commercial hubs. The Anthology series, comprising five books, delves into the different typologies within the built environment.

INSIGHTS
Unmasking the Influence of Gen Alpha on the Retail Landscape

Gen Alpha will comprise the demographic group born from 2010 to 2025, succeeding Generation Z. In this segment, we examine how this generation is going to shape the retail landscape. Today's 6- to 16-year-olds are growing up in a world markedly different from previous generations. Generation Alpha will mature into highly 'woke' consumers. As a result, brands catering to Gen Alpha must adapt to meet these expectations, providing seamless, efficient, and swift experiences. This generation's influence is substantial, shaping the future of retail, technology, and more, as they continue to grow and assert their preferences in an increasingly digital and instantaneous world.

PROJECTS
The Atelier: A Harmonious Fusion of Design and Experience by ONG&ONG and IMMORTAL

The Atelier, a luxury residential tower in Singapore's District 9, offers a modern urban lifestyle with sophisticated design. Developed by ONG&ONG and IMMORTAL, the architecture blends contemporary elegance with functionality, featuring sleek lines and a striking facade of glass, steel, and concrete. IMMORTAL crafted a refined wayfinding system that complements the building's minimalist aesthetic. Earthy nutmeg tones from the architecture are reflected in the signage, creating warmth and cohesion. Materials like brushed metal and glass ensure visual consistency, enhancing the overall elegance of the space while providing a seamless experience for residents.



NEWS
ONG&ONG Vietnam's Director of Architecture Shares Views on Happy One Central

Recently, Hoang Huu Dung, Director of Architecture for ONG&ONG Vietnam, discussed the newly completed Happy One Central at Thu Dau Mot City. Inspired by ONG&ONG's philosophy of enhancing user experience through innovative design, the project aims to provide optimal living and working spaces. The team planned every aspect, from architecture to infrastructure while also integrating local cultural elements. As the tallest building in Binh Duong, Happy One Central offer residents stunning views, best enjoyed from the sky bridge connecting the two towers.



PROJECTS
ONG&ONG Vietnam's Happy One Central is a New Benchmark for Urban Living in Thu Dau Mot, Vietnam

The Happy One Central development was designed to cater to both expats and locals in Thu Dau Mot, with ONG&ONG Vietnam leading the project. Drawing inspiration from other Asian locales, the team devised the development masterplan that encompassed architecture, infrastructure, transport, parking, utilities, and interior design, while flawlessly incorporating elements of local culture. These aspects translate into spaces that optimise natural light and ventilation.



NEWS
ONG&ONG Vietnam CEO Shares Vision of Bringing Singapore's Affordable Housing Model to Vietnam

Recently, the Association of Architects of Ba Ria – Vũng Tàu Province had organised a seminar titled "Experience in implementing the social housing project of ONG&ONG Group in Singapore – Lesson learned in Vietnam" where David Ching, CEO of ONG&ONG Vietnam, was one of the speakers and he spoke about how a social/affordable housing model could be adapted for Vietnam from Singapore. David aspires for ONG&ONG to play a role in Vietnam's aim of having one million social housing units by 2030.

MANAGEMENT



CLARITY FROM CONCEPT TO COMPLETION

The benefits derived from systematic and pre-emptive planning, strong communication, and collective synergies are priceless when it comes to the successful and timely completion of projects.

Our project management specialists draw from a wealth of experience and skills to realise the best end-to-end solutions for every project.



- Project Management
- Project Development
- Construction Management
- Cost Management
- Place Management



- Construction Design & Build
- Turn-Key Solutions
- Contract Works



proj-innovations.com
proj-x.com



PROJECTS
Parochial House at St Joseph Church Restored

Sitting within St Joseph's Church compound, Parochial House, a 112-year-old building, has been revitalised after a seven-year restoration alongside the church's conservation. Serving as an annex to the church, it functions as an office and residence for staff and priests. Works included the restoration of encaustic floor tiles, azulejo tiles, and unique architectural features. Conserved artefacts include the Bishop of Macau's throne, a roundel with "PM" for Portuguese Mission, and a desk for visiting bishops. The refreshed layout includes a large hall, choir room, and lounges on the street level, offices for staff and priests on the second level, and a private chapel, more offices, and accommodations on the third level.



PROJECTS
ONG&ONG Applies the 360 Solution to 7002 Ang Mo Kio Ave 5

ONG&ONG was engaged to provide its 360 Solution where the challenges of architecture, interior design, C&S, M&E engineering, lighting, landscape, and wayfinding were all undertaken by respective in-house discipline specialists to bring the 7002 Ang Mo Kio Ave 5 project to fruition. Spanning eight floors, 7002 AMK's design focuses on the glass façade, where juxtaposing different shades of glass creates a nuanced interplay of light and shadow that helps break up the monotony of the facade and draw attention to key architectural features.

LANDSCAPING



ALWAYS ECO-LOGICAL

Integral to the built environment, landscaping improves sustainability levels, enabling dynamic and mutually beneficial interplays between urbanites and nature.

Our team is focused on generating positive environmental outcomes for future generations.



- Masterplanning
- Space Planning
- Blue & Green Solutions
- Sustainability
- Playground Design



NEWS
The KL Office has Relocated to a New Address

Marking a new chapter for ONG&ONG Malaysia is its relocation to a new office in 2024. Previously, the office occupied two separate units within Block B in Plaza Sentral. Both units are now united in Block A, where the new space brings everyone together, fostering greater collaboration among team members. The design and construction were carried out by in-house talents. The new layout addresses the issue on demarcating the public, semi-public and private spaces, while maintaining seamless connection throughout the office. These enhancements improve how the firm operates at every level while also addressing the needs of each unit.



NEWS
SCA-designed ABeam Consulting Spotlited on Office Snapshots

Office Snapshots features ABeam Consulting's innovative workspace designed by SCA. This dynamic collaboration melds sleek modernity with functionality, creating an environment conducive to creativity and productivity. From vibrant communal areas to thoughtfully designed workstations, every aspect of the office reflects a commitment to excellence in both design and functionality. Founded in 2007 and headquartered in California, Office Snapshots is a leading online resource that curates and publishes new projects, highlights innovative products, and examines industry trends with the goal of improving the workplace.



INSIGHTS
Building Vibrant Cities: Lessons from Urban Planning

The environment people live in greatly impacts their well-being, and understanding what makes cities liveable is essential. Factors such as economic opportunities, public safety, housing, education, healthcare, and efficient infrastructure shape appealing urban spaces. Cities like London, Tokyo, and Singapore exemplify these principles, offering diverse jobs, safety, and well-planned amenities. The future of urban planning hinges on creating vibrant, people-centred cities as such planners and authorities must broaden their thought processes and collaborate to create inclusive societies. Together, they can push policy and decision-makers in the correct direction, to design cities not just for the present, but for the future.



NEWS Charge+ Unveils its Largest EV Charging Cluster in Malaysia

A leading integrated EV charging solution provider for Singapore and Southeast Asia, Charge+ has launched the largest EV Charging Cluster in Iskandar Puteri in Johor Bahru, Malaysia.



PROJECTS Jurong Town Hall Bus Interchange Redefines Commuter Experience

Jurong Town Hall Bus Interchange that was designed by ONG&ONG, ensures seamless connectivity for Jurong East and Tengah residents.



PROJECTS SCA Gives Taipei Fubon Bank a Stylish Design

Taipei Fubon Bank – one of Asia's leading banks has made Guoco Tower its home, and for this project SCA were engaged to design and build this office space that spans 14,390 sq. ft.



NEWS Artyzen Singapore Gets a Mention on CNA Luxury

Artyzen Singapore is highlighted in the feature "Hotel penthouse suites in Asia offering the ultimate luxury stay" on CNA Luxury.



INSIGHTS Generation Alpha: Gaming as the New Social Nexus

Gen Alpha are turning to gaming platforms to connect. Reports notes that 50% of teens game so they can play with their friends and 46% game because it makes them feel more connected with their friends.



PROJECTS BCA Braddell Campus Gets a Fresh Wayfinding Strategy

IMMORTAL was engaged to provide a fresh take and improve the signage system of the Braddell Campus that is located at Braddell Road.

LIGHTING



BRIGHTER TIMES AHEAD

Efficient, evocative, and essential - these are the qualities our lighting specialists address with every space.

Our lighting solutions augment users' view of the environment, directing the eye towards, across, and beyond each plane and perspective.



- Architectural Lighting
Equipment Cost Control
Operational Cost Control
Lux Level Calculations
Lighting Controls
Lighting Audits



NEWS Business Insider Shortlists Artyzen as One of 14 Most Unique Buildings for WAF 2024

Business Insider rounded up 14 of the most eye-catching nominees shortlisted in this World Architecture Festival (WAF) and amongst them is Artyzen Singapore – a 5-star hotel experience that is deeply ingrained with references to Singapore culture and architecture.



PROJECTS Project Innovations and Project X:ION's Lotte Duty Free Stores Elevate the Airport Retail Experience

Lotte Duty Free was appointed the Liquor and Tobacco concessionaire at Changi Airport. To mark this milestone, the outlets have been given a fresh design approach to align themselves with Lotte's philosophy.



INSIGHTS Smart Cities are the Blueprint for Urban Progress

The world is rapidly urbanising, with over two-thirds of the global population expected to live in cities by 2050. Future cities will be defined by technological, environmental, and social innovations, making them more liveable and sustainable.

INTERIOR



REFINED BY DESIGN

Spaces that excite the senses, that soothe the soul, or fire the imagination - this is the alchemy of interior design.

From residential to commercial, sacred to civic and more, our spaces are designed to inspire the mind and empower function in equal measure.

- Advisory & Consultancy
Feasibility Study
Master Design Guidebook
Space Planning
Test Fit
Turn-Key Solutions



As we navigate the dynamic landscape of today's world, I am reminded of how change often brings growth. Over the past year, the ONG&ONG Group has experienced significant strides in our journey of progress and innovation. And 2024 has been a pretty transformative year for the Group.

Among the notable changes is our Malaysia office. We recently relocated from a two-level workspace to a more inclusive and collaborative environment on a single level. This shift is more than just a move of desks and chairs; it symbolises a consolidation of our efforts, fostering greater cohesion among our teams. By streamlining our operations, we're not only enhancing collaboration but also setting the stage for the future. Additionally, we are proud to announce the opening of an office in Johor Bahru. This expansion ensures that we remain well-positioned to provide the best service for our clients.

In Singapore, growth is taking shape in new initiatives like the BeyondX Lab at 21 Keppel Road, which is a dynamic living lab and incubation space designed to foster sustainable smart experiences within the built environment. BeyondX is more than a physical space; it is a platform for ideas, creativity, and collaboration. I have learned that innovation does not happen in a vacuum. Innovation thrives in environments teeming with collaboration, idea exchange, and interaction with diverse stakeholders. Even the brightest ideas often need collective effort and varied perspectives to come to life.

Having gained a reputation for being a disruptor and as a leading architecture firm in the region, it is our task to identify new technologies and innovative solutions for the real estate sector. As such, ONG&ONG and Rankine&Hill are moving to 21 Keppel Road, where we can collaborate with other firms. It's an exciting step, and one that speaks to the essence of BeyondX: to connect, collaborate, and co-create.

And in 2025, we will launch the first of many events in this groundbreaking space, starting with the X-athon where some of the brightest minds come together to push the boundaries of technology and shape the future of the built environment; we also have a summit planned for the later part of the year. The Summit is designed to serve as a catalyst for innovation and collaboration and focuses on key strategic pillars like growth, community building, and sustainability. It unifies different audience segments, allowing tailored engagement to foster a cohesive, purpose-driven environment where innovation is at the forefront.

As we look ahead, I believe these changes are more than just adjustments; they are key to future-proofing the ONG&ONG Group. By embracing new formats, fostering inclusive spaces, and expanding our footprint, we are setting the foundation for a future where we continue to lead and innovate in an ever-evolving industry. True success demands sustained effort, dedication, and a meticulously crafted plan. I am confident that together, we can build that future.




BI-ANNUAL NEWSLETTER • NOVEMBER 2024 • MCI (P) 017/07/2024

360 NEWS is published by ONG&ONG Group Pte Ltd. All rights reserved. No part of this newsletter may be reproduced without the permission of ONG&ONG Group Pte Ltd. Opinions expressed in 360 NEWS are those of the writers and are not necessarily endorsed by ONG&ONG Group Pte Ltd. ONG&ONG Group Pte Ltd accepts no responsibility for unsolicited manuscripts, transparencies or other material.

Address all editorial and business correspondence to

ONG&ONG Group Pte Ltd
Corporate Communications Department
510 Thomson Road
#11-00 SLF Building
Singapore 298135

You are receiving this newsletter because you have been involved with ONG&ONG in the past. If you feel you are receiving this newsletter in error, please email corpcomms@ong-ong.com to unsubscribe from our mailing list.

 In line with our corporate strategy of sustainable design, this newsletter is printed on sustainably sourced paper.

ONG&ONG Group Pte Ltd
510 Thomson Road,
#11-00 SLF Building,
Singapore 298135
t +65 6258 8666
f +65 6259 8648

ONG&ONG Pte Ltd
510 Thomson Road,
#11-03 SLF Building,
Singapore 298135

21 Keppel Road
Singapore 089067
t +65 6258 8666
f +65 6259 8648

PT ONG and ONG
Grha Niaga Thamrin 1st Floor Unit A1
Jl. K.H. Mas Mansyur
Kebon Melati, Tanah Abang
Jakarta Pusat 10230, Indonesia
t +62 21 2139 2269
f +62 21 2139 2309

**ONG&ONG 360
Consultancy Sdn Bhd**
Unit IA-07, Blok IA, Plaza Sentral,
Jalan Stesen Sentral 5,
50470, Kuala Lumpur.
t +60 3 2272 2360
f +60 3 2272 3360

Unit 02-13 Blok H,
Komersial Southkey Mozek,
Persiaran Southkey 1,
Kota Southkey, 80150 Johor Bahru,
Johor Darul Takzim Malaysia

ONG&ONG Design LLC
Residence 60, Unit 13-07, 4th Khoroo,
15th Khoroolol Peace Auv 8B,
Ulaanbaatar 13345, Mongolia
t +976 7575 6515
f +976 7575 6525

ONG&ONG Limited
No. 3L, 3rd Floor,
Kabaraye Condominium,
Kabaraye Pagoda Road,
9 Ward, Mayangone Township,
Yangon, Myanmar

ONG&ONG Design Co., Ltd
75 / 50 Level 15, Richmond Office
Building, Soi Sukhumvit 26, Klongtan,
Klongtoey, Bangkok 10110, Thailand
t +66(0) 2 258 5915

ONG&ONG Co., Ltd
Unit 1003B, Level 10
Centre Point Building,
106 Nguyen Van Troi Street
Ward 8, Phu Nhuan District
Ho Chi Minh City, Vietnam
t +84 28 6285 6178 / +84 28 6285 6179
f +84 28 6285 6169
www.ong-ong.com

Project Innovations Pte Ltd
510 Thomson Road,
#11-03 SLF Building,
Singapore 298135
t +65 6255 3966
f +65 6259 8648
www.proj-innovations.com



Catch up with the
ONG&ONG Group
by accessing our
past issues here

Project X:ion Pte Ltd
510 Thomson Road,
#11-03 SLF Building,
Singapore 298135
t +65 6255 3966
f +65 6259 8648
www.proj-xion.com

**Rankine&Hill
(Singapore) Pte Ltd**
510 Thomson Road,
#11-03 SLF Building,
Singapore 298135

21 Keppel Road
Singapore 089067
t +65 6278 9588
f +65 6259 8648

**Rankine&Hill
(Vietnam) Co., Ltd**
Unit 1003B, Level 10, Centre Point
Building 106, Nguyen Van Troi Street,
Ward 8, Phu Nhuan District,
Ho Chi Minh City, Vietnam
t +84 28 6285 6178 / +84 28 6285 6179
f +84 28 6285 6169

**Rankine&Hill
(Malaysia) Sdn Bhd**
Unit IA-07, Blok IA, Plaza Sentral,
Jalan Stesen Sentral 5,
50470, Kuala Lumpur.
t +60 3 2272 2360
f +60 3 2272 3360

**Rankine&Hill
(Myanmar) Limited**
No. 3L, 3rd Floor,
Kabaraye Condominium,
Kabaraye Pagoda Road,
9 Ward, Mayangone Township,
Yangon, Myanmar
www.rankine-hill.com

SCA Design Pte Ltd
510 Thomson Road,
#11-03 SLF Building,
Singapore 298135
t +65 6253 4886
f +65 6259 8648
www.sca-design.com

**IMMORTAL
The Design Station Pte Ltd**
510 Thomson Road,
#11-03 SLF Building,
Singapore 298135
t +65 6227 9406
f +65 6259 8648
www.immortal.com.sg

ONG&ONG


 ONGONG360

 @ONGONG_360

 ONG&ONG


SCA


 SCADESIGN360

 @SCADESIGN360

 SCA DESIGN PTE LTD

IMMORTAL

 IMMORTALSINGAPORE

 @IMMORTAL_SINGAPORE

 IMMORTAL

RANKINE&HILL

 RANKINE&HILL

Vision

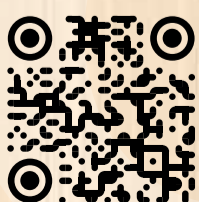
Experience Beyond

Purpose

To Improve the World in which We Live

Role

To Enhance the Well-being of Inhabitants
through Excellence in Sustainable Design



group.ong-ong.com

SINGAPORE
INDONESIA
MALAYSIA
MONGOLIA
MYANMAR
THAILAND
VIETNAM