

360 NEWS

Nature

大自然

自然環境

環境問題

Combating Climate Change

Latest Accomplishments

Brace yourself for the 5G Storm

Our Specialist Studios

OCT 2019 • MCI (P) 098092019



Alam semula jadi

байгаль

သဘာဝ

ธรรมชาติ

Thiên nhiên

Байгалийн

自然環境

環境問題

自然環境

PATH TO
SUSTAINABLE
CITIES

ONIC &

EXPERIENCE
BEYOND.

Fearless Front

Upgrades for Thought Leaders

From growing our expertise from within to recognising specialised talents, these top dogs bring fresh leadership perspectives to the table. We look forward to seeing you at the pantry.



Benson Wee
Studio 1D21, Director
Singapore



Ong Qi Rong
Studio 38, Director
Thailand



Sunita d/o Krishna Dass
Studio 40, Associate Director
Singapore



Lai Tien Yong
Studio 40A, Director
Singapore



Erick Artavia Suarez
Studio 40B, Associate
Singapore



Robert Brodeth
Studio 40C, Associate Director
Singapore



Ong Hwee Jin
Studio 1, Associate Director
Singapore



Suherman Bin Sadelan
Studio 36, Associate Director
Malaysia

ECHOES FROM BEYOND

Sharing, dissecting and understanding the exponential technologies shaping our projects and the AEC industry, today and into the near future.

"Definitely more than what I expected."

"A journey beyond today, into the future."

"To share what we have, what we know...and we would also want to learn from others, including our technology collaborators."

"Gathering and aligning designers - the discussion gets interesting."

"...realising possibilities with all the technology and software available."

"Adopting technology as an architect of tomorrow to open up greater opportunities, and make more sustainable cities as well."

[Flip to find out more.](#)



Awards

Our latest honours are the direct result of the diligence and dedication of talented ONG&ONG studios and teams throughout the Asian region. Industry recognition and praise are always a good indication that the firm is on the right track as we collectively strive towards great design that enriches experiences.



fruits of our labour

BEYOND

Awards



Jadescape
Asia Pacific Property Awards, Singapore Residential High-rise Architecture, 5 Star Award winner

Asia Pacific Property Awards, Asia Pacific Residential High-rise Architecture, Nominee

Principal Leads and Team Members:
Ashvinkumar Kantilal, Andrew Lee, Lai Tien Yong, Armel Sales, Doris Eng, Frederick Santiago, Joanne Goh, Michelle Magat, Natapon Akomsoontorn and Ryan Manaloto *Architecture*
Teo Boon Kiat, Larry Wang, Samantha Ho and Yu Aitong *Interior Design*
Tan Peck Khoo, Shahrom Bin Mohamed Ariff, Teh Yong Hui, Chun Junyuan and Yeong Ziang *M&E Engineering*



Grandezza, Eco Sanctuary
Asia Pacific Property Awards, Malaysia Architecture Multiple Residence, 5 Star Award winner

Asia Pacific Property Awards, Asia Pacific Architecture Multiple Residences, Nominee

Principal Leads and Team Members:
Tan Kee Keat, Hasbullah Bin Abdullah, Ismed Chayadie Bin Che Din, Saiful Azri Bin Mohd Husain, Phang Shouk Yan, Rajinderjit Singh A/L Naranjan Singh, Mohd Faizal Bin Natilan, Azhar Bin Chik, Zulhan Bin Majid, Azhana Binti Adenan, Siti Sarah Binti Dzulkifli and Yong Athirah Binti Zamzuri *Architecture*



Gold Coast Sea View Apartment
Asia Pacific Property Awards, Indonesia Residential High-rise Architecture, 5 Star Award winner

Principal Leads and Team Members:
Kurjanto Slamet, Loh Kah Wai, Patricia Widjaya and Giovanni Bautista *Architecture*
Teo Boon Kiat *Interior Design*
Lena Quek and Gener Lopez *Landscape*



Al-Ansar Mosque
Asia Pacific Property Awards, Singapore Public Service Architecture, 5 Star Award winner

Principal Lead and Team Member:
Kurjanto Slamet and Loh Kah Wai *Architecture*



Mass Rapid Transport (MRT) Line 2
Asia Pacific Property Awards, Malaysia Public Service Architecture, Award winner

Principal Leads and Team Members:
Andrew Lee, Tan Kee Keat, Ramil Polintan, Louis Tan, Harith Ikhwan, Normah Hayati Yaacob Armel Sales and Raymond Bachtiar *Architecture*



Bedok Public Library
Asia Pacific Property Awards, Singapore Public Service Interior, Award winner

Principal Lead and Team Members:
Robert Brodeth, Michelle Magat and Renny Melina *Architecture & Interior Design*



Mâm Concept
Asia Pacific Property Awards, Vietnam Leisure Interior, Award Winner

Principal Leads and Team Members:
Raymond Thai, Le Anh Triet, Nguyen Thao Ngan and Le Huyen Anh *Interior Design*



American International Hospital
Asia Pacific Property Awards, Vietnam Public Service Interior, Award winner

Principal Leads and Team Members:
Raymond Thai, Nguyen Viet Phuong, Au Nguyen Thuy An and Nguyen Huu Phuoc *Interior Design*



Jurong Central Plaza
HDB Design Awards, Completed Projects (Rejuvenation) Category, Certificate of Merit

Principal Leads and Team Members:
Steven Low, Ong Hwee Jin, Tong Pey Haw, Belinda Wong, Greg Cinco and Debbie Sim *Architecture*
Tan Peck Khoo, Richard Teo, Brandon Li and Chng Wei Xiang *M&E Engineering*
Lim Yan Ping and Slamet Gunawan *C&S Engineering*



ONG&ONG Pte Ltd
BCI Top 10 Architects, Singapore



Jurong West Street 52 Nursing Home
BIM Award (Design Stage) by MOHH

Principal Leads and Team Members:
Wendy Tan, Joseph Fermanes, SivaKumar, Chen Shujun, Anthony Gaza, Azman Bin Embong, Allan Censon and Oliver Imperial *Architecture*



MacPherson MRT Station
Land Transport Excellence Award 2019, Best Design Rail / Road Infrastructure — Project Partner Award

Principal Leads and Team Members:
Wendy Tan, Wang Lai Meng, Khor Siew Hui, Jojo Leonardo Salvador, Grace Loh and Oliver Imperial *Architecture*



Heartbeat@Bedok
BCA Universal Design Mark Award, GoldPlus BCA Construction Excellence Awards, Merit

Principal Leads and Team Members:
Ashvinkumar Kantilal, Robert Brodeth, Michelle Magat, Christina Sumanga and Renny Melina *Architecture*
Lena Quek *Landscape*
Shahrom Bin Mohamed Ariff, K Mohamed Jawith and Chng Wei Xiang *M&E Engineering*



West Rock @ Bukit Batok
BCA Universal Design Mark Award, GoldPlus

Principal Leads and Team Members:
Steven Low, Benedick Badenas, Belinda Wong, Eliza Manglimot and Greg Cinco *Architecture*
John Poe *Landscape*
Brandon Li *M&E Engineering*
Simon Loh *C&S Engineering*



Ulu Pandan Bus Depot
BCA Construction Productivity Awards 2019, Gold

Principal Leads and Team Members:
Wendy Tan, Josephine Loo, Khor Siew Hui, Elmer Jay Caparros, Gina Reneido and Oliver Imperial *Architecture*
Richard Teo and Chionh Ken Kiat *M&E Engineering*



Kaki Bukit MRT Station
BCA Construction Excellence Awards 2019, Excellence

Principal Leads and Team Members:
Wendy Tan, Wang Lai Meng, Khor Siew Hui, Anthony Gaza, Grace Loh and Oliver Imperial *Architecture*



360 Circle Publication
Singapore Good Design

Principal Lead and Team Member:
Stanley Tan and Chiang Hui *Brand Engagement*



FBN Asia, 10th Anniversary Commemorative Book
Singapore Good Design

Principal Leads and Team Member:
Stanley Tan, Emeric Lau and Lim Pei Xuan *Brand Engagement*



PS Skin Packaging
Singapore Good Design

Principal Leads and Team Member:
Stanley Tan, Emeric Lau and Lim Pei Xuan *Brand Engagement*



Toomato Italian Kitchen
Singapore Good Design

Principal Lead and Team Member:
Stanley Tan and Emeric Lau *Brand Engagement*



Mojura, formerly known as BeyondPak
Singapore Good Design

Principal Lead:
Liang Lit How *Human Resource in collaboration with NYP's School of Design*



Heartbeat@Bedok
World Architecture Festival, Finalist

Principal Leads and Team Members:
Ashvinkumar Kantilal, Robert Brodeth, Michelle Magat, Christina Sumanga and Renny Melina *Architecture*
Lena Quek *Landscape*
Shahrom Bin Mohamed Ariff, K Mohamed Jawith and Chng Wei Xiang *M&E Engineering*



The Scotts Tower
MIPIM Asia Awards, Best Residential Development, Bronze Winner

Principal Lead and Team Member:
Ashvinkumar Kantilal and Natapon Akomsoontorn *Architecture*



Mâm Concept
Architizer A+ Awards 2018, Unbuilt Hospitality, Finalist

Principal Leads and Team Members:
Raymond Thai, Le Anh Triet, Nguyen Thao Ngan and Le Huyen Anh *Interior Design*

BRACE YOURSELF FOR THE

5G

QUANTUM LEAP

THE NEXT

STORM

DESIGNING THE FUTURE

BEYOND



An inaugural Architectural, Engineering and Construction event held in Singapore pushes for groundbreaking technologies.

BIM is not the end of disruptive innovation for the AEC industry.

Disruptive Innovation

The term disruptive innovation comes up often within the Architecture industry, its driver being technological shifts and breakthroughs. The changes is not gradually incremental, with "leapfrogging" dramatically changing the way we work.

But as promising as it sounds, speculation and over-hyped technologies may have oversold the notion. Processes in construction have not changed much in the last century. In fact, the AEC industry has been termed the "last craft industry".

That is all set to change. Tech events like BeyondX (more on facing page) present a compelling outlook for technology, showcasing exponential capabilities like AR/VR, 3D Printing and Artificial Intelligence; most of these already being implemented for processes within the industry. But there is one technology that is already brewing, and it is set to (further) boost almost every aspect of our lives.

Fifth Generation Network

Prepare the calvary, for the next tidal wave of technology appears to be the upcoming **5G Network**, or Fifth Generation Network. The new benchmark for wireless network performance, it will allow groundbreaking peak speeds of 100 gigabits per second – a network infrastructure that reduces latency dramatically, with enough capacity for a new range of emerging technologies.

Expect nothing less than buffer-less video streaming and unprecedented levels of connectivity. In the near future, so long as an appliance is electrified, it can be connected with an infinite plethora of other appliances, resulting in an **Internet of Things (IoT)**. Experts estimate 28 to 100 billion devices to be connected to the internet in 2020.

Apart from its obvious potential to **enhance everyday living**, consider the effects on the AEC industry: drones that monitor health and safety issues at a building site, sending alerts when structural beams affect construction integrity from afar, smart buildings that control lighting and shade control for more efficient ventilation and indoor temperature regulation, and even smart grids to distribute energy efficiently throughout cities.

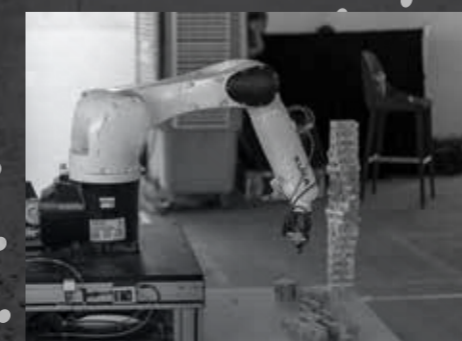
New Technologies

New technologies like 3D printing have seen architects going back to the drawing board and opening new doors for traditional materials. Timber laminate is now envisioned to play an integral part in building higher and lighter, and researchers are aiming for these advances to become a part of construction sites within the next five years.

What about green energy sources? Take **solar**, for example. SunRun, Vinvint Solar and Tesla are leaders of the solar tech race, and are not only making next generation green energy affordable to households, but plan to integrate their capabilities with a **smart household**, like activating solar power by phone for a warm shower.

Perhaps in the near future, we can replicate how the Karez Well system in China allows people to work with, not against, the forces of nature to deliver their needs. Let's nurture what we touch. 5G should prove just the catalyst.

DIGITAL URBAN PLANNING AND DESIGN



ONG&ONG Group hosted its first open design technology event in Singapore on Thursday, 11th July. Held on an entire office level in SLF Building at Thomson Road, the event opened the floor to technology collaborators and design showcases related to the built environment.

The Future Of Building

Looking towards the future of building, from **Artificial Intelligence** to 3D-printed structures, BeyondX encouraged attendees to embrace a disruptive mindset, and to be open to positive changes for the industry.

Trinity Methodist Church and Bedok Public Library were among the many projects cited as prime examples of developments that have benefitted from newer technologies.

Speakers included Adriel Sim from URA DCG, Patrick Janssen from NUS and Felix Raspall from SUTD, while AIRLAB showcased an array of future forward solutions, addressing **3D technologies, computational design** and digital fabrication respectively.

It was the first time ONG&ONG Group has organised a design festival of this scale, and the event was a success, with various design technology experts offering to come on board for its next edition in 2020.

Ong Tze Boon, Chairman of ONG&ONG Group, opened the event with a statement for thought,

"If you're not the one doing the disruption, regardless of your industry, you will be disrupted."

DISCOVER
DISCOVER
DISCOVER
DISCOVER
DISCOVER

ARTIFICIAL INTELLIGENCE AND SKYSCRAPERS



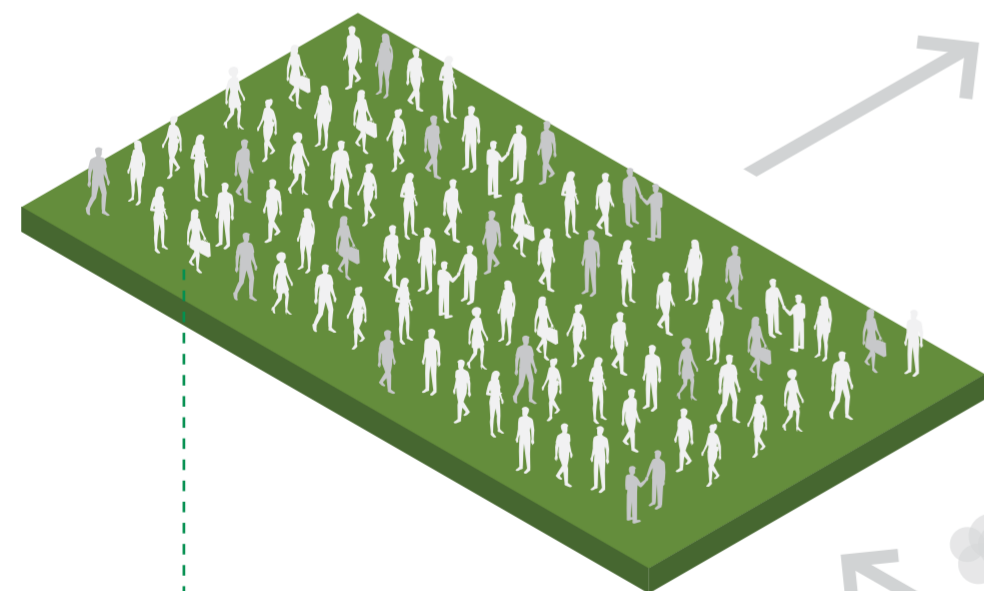
ON THE PATH TO SUSTAINABLE CITIES

Combating Climate Change

For The Sake Of Progress

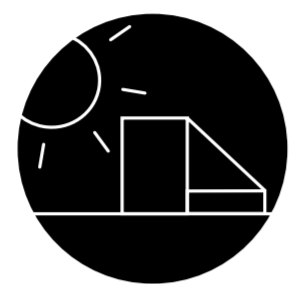
– this oft-wielded epithet has been used to justify deforestation for urban development, and is now popping up ironically, as the rationale for initiating green projects.

Climate change cannot be denied, and we have wised up to the benefits of verdure along with a plethora of sustainable practices.



58% Increase in Global Urban Population by 2050

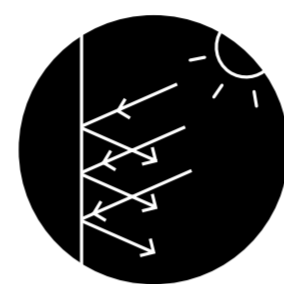
Cement accounts for 94% of CO₂ emissions in construction



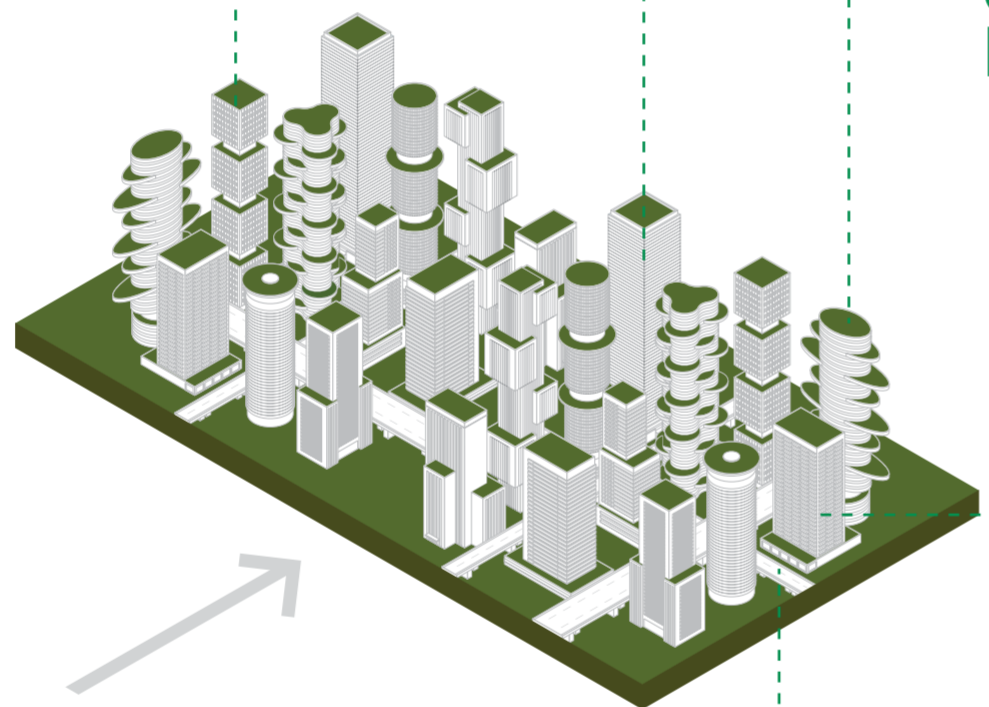
Harvesting Clean Energy



Vertical Farming



Passive Green Design



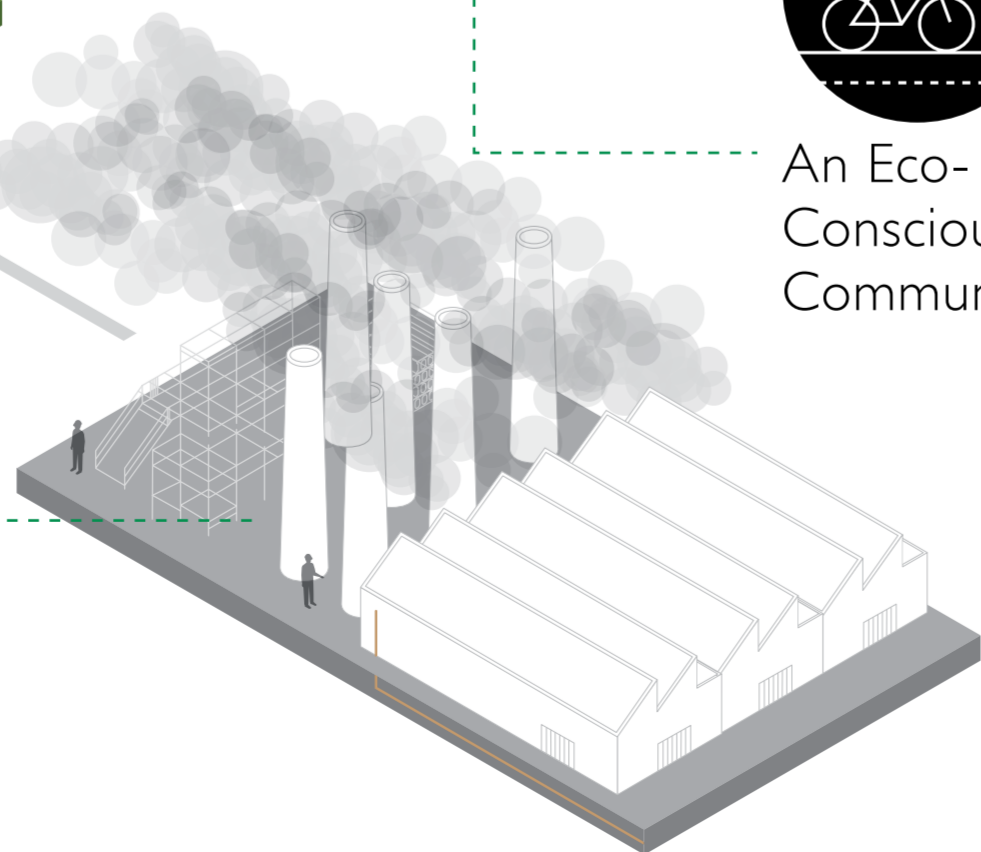
GREEN PROJECTS



Living Wall



An Eco-Conscious Community



The Challenge

The building trade has recognised its devastating impact on greenhouse gas levels. Cement, an essential component, accounts for 83% of energy used in the production of non-metallic minerals, and 94% of CO₂ emissions. In 2018, the International Energy Agency stated, "The cement sector is the third-largest industrial energy consumer in the world, responsible for 7% of industrial energy use, and the second highest industrial emitter of carbon dioxide, with approximately 7% of global emissions." Solutions are on the rise, like Richard E. Riman's **Solidia CO₂-storing Concrete** and BarcelonaTech's "Biological Concrete", a special **concrete that sprouts greenery**.

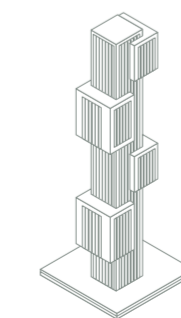


55% of the global population reside in urban areas, with the UN projecting that number to rise to 58% by 2050. The correlation between quality of life and concrete shifts toward sustainable cities is inseparable. Cities scoring lows on the global index for quality of life can look to architects and urban planners to integrate measures like green roofs and facades, rainwater collection, green-blue urban planning and urban agriculture.

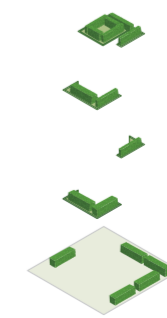
The Future Now — Green Infrastructure

"Green design" has many names: eco-design, earth-friendly, organic architecture, biomimicry, arcology, and so on. The collective goal is to strive for a sustainable future where nature is a part of the built environment.

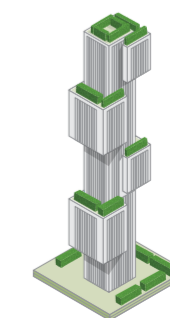
Existing green buildings like **Singapore's Frasers Tower, Ng Teng Fong General Hospital, National Library, Oasia Hotel Downtown, Tree House, Heartbeat@Bedok** and Vietnam's **Atlas Hotel** in Hoi An showcase environmentally-friendly designs. Some sport entire facades draped in lush planting, in line with the shift towards biophilia and topophilia. A rooftop meadow is now a necessity – high-rise towers are resembling vertical forests and thorough building orientation studies and wind flow research is the order of the day. Urban greenery is a much-needed solution to the growing urban heat island phenomenon, causing cities to be warmer by 1-3°C.



Structure



Vegetation



Green Building



Bosco Verticale

Countries are acknowledging the need for green infrastructure, which is good news. Certifications like the international Leadership in Energy and Environmental Design (LEED), Green Mark in Singapore, Landscape Excellence Assessment Framework (LEAF) or LOTUS certifications in Vietnam encourage developers to adopt green designs for recognition. Policies such as the Landscape Replacement Area (LRA) require a one-to-one replacement for the greenery lost to a building's footprint.

More Than Visual Appeal

A recent study found that buildings with the Green Mark are on average 11.6% cheaper to operate, although they cost about 5% more to construct.

An infographic by Ambius, illustrates that greenery improves presenteeism (productivity within the office). National Geographic writer Brian Clark Howard states that students score better in tests taken under natural lighting conditions.

Green roofs act as rainwater buffers, reducing ambient temperature, extending roof lifespan and function as a natural fire-retardant. What's next? Should more residential clusters replicate the Bosco Verticale?



Solar cell roof tiles, living walls, vertical farming and wind turbines are all coming online in quick succession, meaning that we may yet mitigate the negatives of climate change, and take steps towards a net-zero carbon footprint for cities.



Bosco Verticale

The collective goal is to strive for a sustainable future where nature is a part of the built environment.



แรงบันดาลใจจากสวนสาธารณะที่แทรกตัวอยู่ในเมือง เราจินตนาการถึงวิถีชีวิตคนเมืองที่สัมผัสสวนธรรมชาติสุนทรีย์ภาพที่เข้าถึงง่ายการออกแบบรูปทรงอาคารที่ระเบียงลดหลั่น ผสานกับพื้นที่สวนที่ไต่ระดับไปยังท้องฟ้า เอื้อให้เกิดพื้นที่สวนที่ดูก็อาศัยเข้าถึงได้เพียงไม่กี่ก้าวจากประตูบ้าน สะท้อนรูปแบบการใช้ชีวิตหรูหราและปราณีต

Park Origin Phayathai

Unique green staircases that bring residents on an adventure above their homes. **Thailand**

Principal Lead
Ong Qi Rong Architecture

Predicated on a park-like experience replete with all of nature's pleasures and wellness benefits, the L-shape plot was ideal for a tower and block hybrid. The massing tapers vertically, with terraces on selected floors, like a giant set of steps. These terraces are linked via stairs, encouraging social interaction between neighbours, and creating gardens in the sky that boast expansive views poised #Forthegram. Residents thus enjoy the everchanging sights of the surrounding urban scape from the comforts of a lush haven.

Cities are often defined by their communal spaces, with large portions dedicated to green spaces. Inspired by the urban parks of Bangkok, Park Origin was conceptualised to deliver a green third space to its residents.

Amenities are not in short supply, with a park lawn, children's playground and water features. Fitness is addressed with a lap pool and gym, elevating the mind with views of verdure and rejuvenating the body.

Tucked away amidst the city's bustle, it serves as a haven, visually enticing passers-by with its greenscape and sense of tranquillity.

In sum, the green spaces coalesce to form a mini mountain trail, breaking the monotony of Bangkok's high-rises. Park Origin stands out against the city skyline with the prominence of a majestic towering mountain.



Park Origin



Frasers Tower

An alluring green haven makes for an ideal urban retreat. [Singapore](#)

Principal Lead and Team Member:
Lena Quek and Ron Dawinan *Landscape*

Flanked by the Gotham-like cityscape of Telok Ayer and Cecil Streets, Frasers Tower, a design by DP Architects; resides on a trapezoidal site that forms a visual gateway into the heart of Singapore's Central Business District. Set amidst tall trees and lush shrubs, the ground level plaza has a central water fountain with a tree-lined promenade, replete with cosy niches, forming an urban park and a place of respite.

The landscape design is based on two approaches –biophilia and topophilia. Biophilia, being the innate bond of human beings with nature targets the psychological wellbeing and productivity of the workforce and topophilia, strong psychological love of or emotional connection with place or physical environment.

To enunciate the grandeur of the area, tall conical trees were planted along the driveway to provide an inviting shade for oncoming visitors. Light canopy flowering trees allow dappled sunlight to stream through, respite from the sun and beauty in the blooms.

The cascading terraces at the 2nd and 3rd storeys are spill-out terraces for the F&B outlets, with a palette of broad-leaved foliage. However, on the 4th storey where the outdoor space transits to a sheltered area under the tower footprint, the selection of greenery is more shade tolerant and ornamental. Shade is one of the main considerations for planting, ensuring the plant palette comprises a dense mixture of broad and fine leaved trees with interesting shrubs to complete the view.



Frasers Tower

BECA-House

A multi-generational home embraces bold interplays of material, motifs, functionality and the familiar. Singapore

Principal Leads and Team Members:
Maria Arango, Diego Molina, Tomas Jaramillo Valencia, Julius Caramat, Eleazar Cortazar and Ong Ai Li
Architecture



Sequestered within the lanes of upscale East Coast private homes, is a multi-generational home that exudes warmth. The homeowners' request was simple: they wanted spacious, well-ventilated areas with a green influence that catered to the needs of their paternal grandparents. This resulted in a home with multiple uses of spatial borrowing, defined by nigh perfect rectilinear lines.

A wide entrance beckons, with unique aluminium louvres. From the entrance, the wide porch is outlined by weather-resistant concrete, angled like a shoebox and connected to the main block with similar aluminium louvre patterns, and lush greenery on the middle level.

The porch accompanies a retained Bucinda Tree and garden plot, with an undulating pebble and granite pathway that provides a gentle transition from greenery to the interiors.

The Communal Space

A common challenge in Singapore is the proximity of neighbours, which led to the facade sporting distinctive aluminium screens throughout the second and third levels, adding privacy to the interiors. Additionally, an astute use of plants screens the surrounding properties.

A solid teak plank wall hides the main door at the entrance, swivelling to the living room. Surrounded by tinted floor-to-ceiling windows that borrow the surrounding greenery, the living room is the main area for all three generations to congregate.

The clean space combines the seating area, dining area and dry kitchen, all with pure grey marble flooring. A quartz countertop faces the sitting area, with convenient built-in appliances against wooden laminated cabinetry. A wild teak veneer cupboard frames an entertainment system and other paraphernalia, keeping the lift, wet kitchen, helper's quarter and ascending stairs from view. On the same level is a guest room with teak flooring.



Sisterhood of the Second Level

The cantilever teak stairs are guided with handrails to the second level. Here, a clean approach paved the way for clean wooden wall panels, revealing the daughters' rooms. Connected by a Jack-and-Jill bathroom, it was the owners' intent so as to maintain interaction between the siblings.

The floor features an almost 360 exposure with planter boxers and draping vegetation. This yields two advantages: softening the exterior façade and elevating the garden feel. A plywood spray-painted veneer wall leads to the family room, yet another communal space with similar traits from the main living room. The treated concrete block walls feel industrial, and are juxtaposed against the wooden influences, providing a sense of honesty to the interiors. The shallow gaps for the walls give a beguiling floating look, while easing maintenance of the home.

The repeated linear design from the gate and facade continues within, expressed with a spray-painted wooden ceiling.

A Master Bedroom to Envy

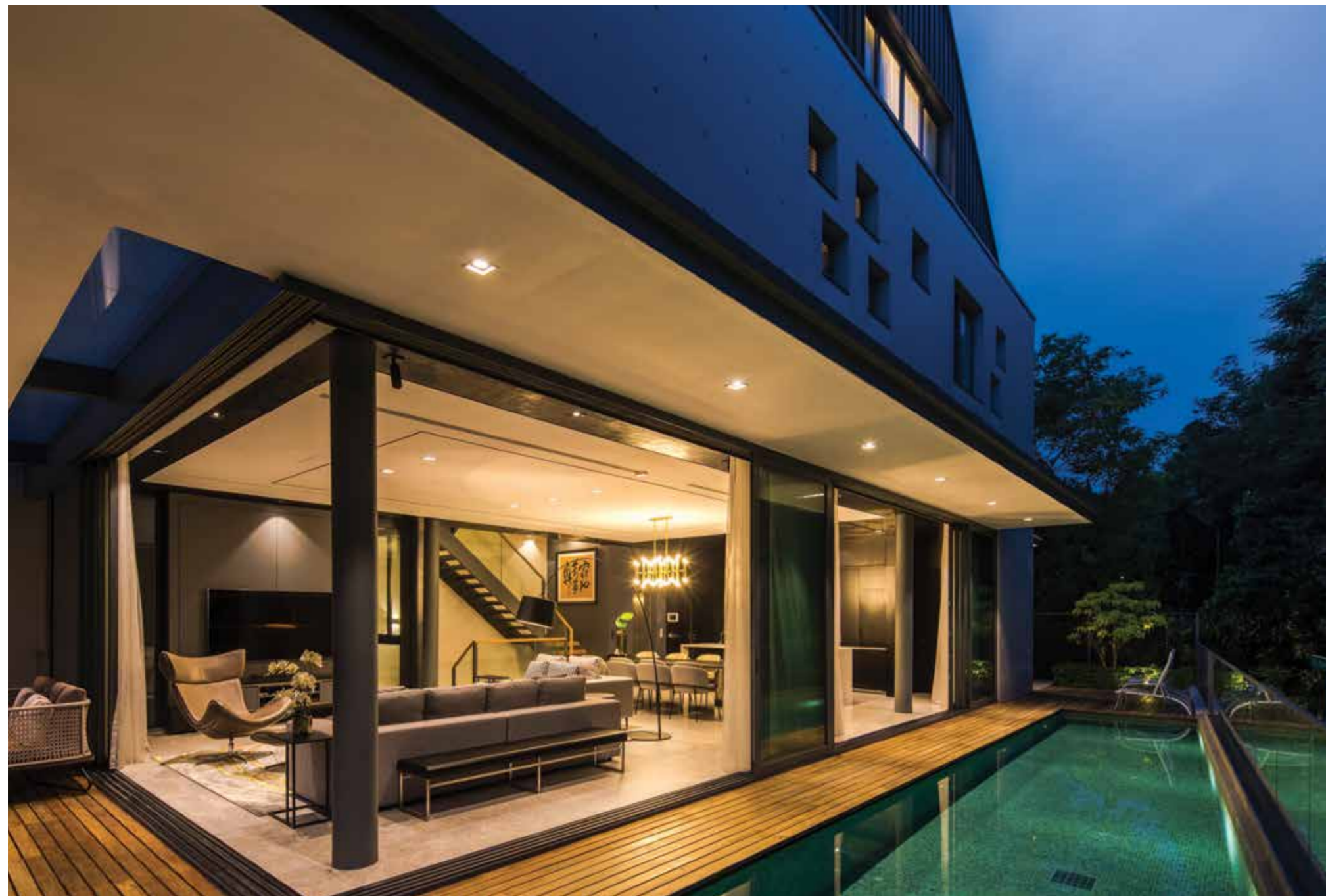
The same design language continues on the third level, unveiling the master bedroom and grandparents' room. Sharing a divided teak deck, the only similarity between the rooms, provides spatial freereplay for a rattan day bed or even a hammock.

The grandparents' room features antique dark wood furniture almost 50 years old. These heirloom pieces preserve a sense of familiarity for the elderly couple.

The dark wood furniture contrasts well with the fair-faced walls. A segmented cupboard features bric-a-brac vignettes, fronted by a wood laminate desk. Beyond, the master bed faces the deck, allowing the owners to rise with the sun's morning rays. An entire wall was dedicated to a meticulously designed wardrobe for the couple, guised with spray-painted veneer. The master bathroom is screened by planters and aluminium louvres, giving a resort-like experience of showering amongst nature.

Going green, the home's rooftop solar panels reduce daily energy consumption while the abundance of greenery provides visual comfort and naturally cools the house. The louvres, in turn, redirect incoming sunlight away from the interiors.





2VPG-House

Ritzy interiors enhance daily life for a modern family, and make a perfect setting in which to unwind when everyone is home in the evenings. **Singapore**

Principal Lead and Team Members:
Teo Boon Kiat, Jane Koh and Razim Bin Abdul Wahab
Architecture

2VPG-House presents a bespoke interior for a family, focused on design and comfort.

The first floor benefits from an abundance of natural light in the living room and dry kitchen, with large windows that frame the exterior views.

In the evenings, warm lighting preserves a sense of calm, together with a controlled palette of materials.

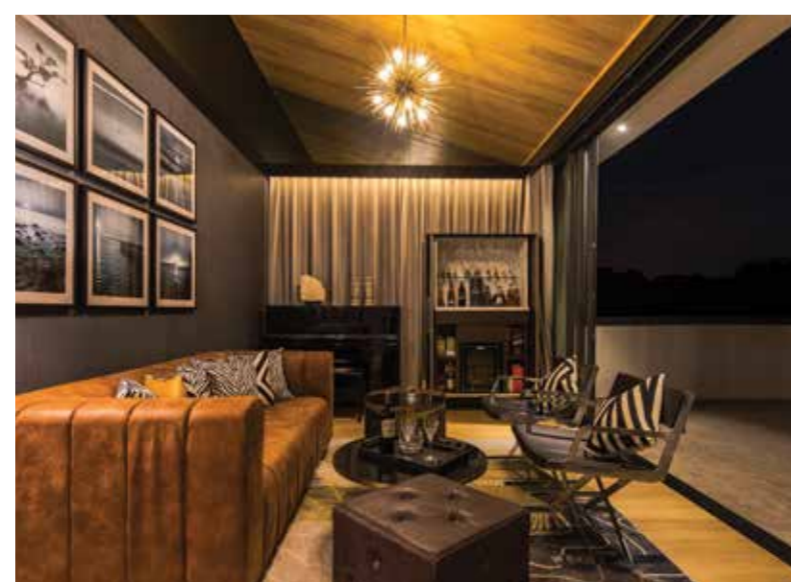
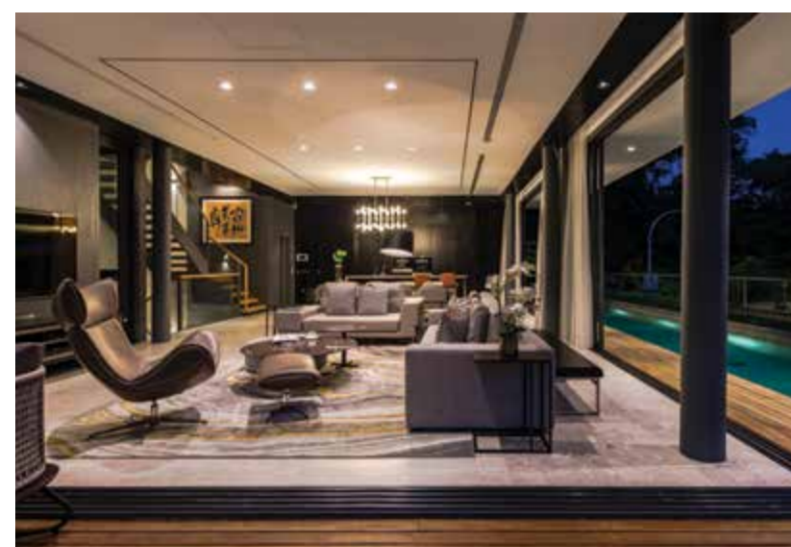
The kitchen's fitted appliances and concealed cupboards accompany an island waterfall countertop. This acts as a counterpoint to the colours and forms of the living room furniture.

The designers framed the views with solid border trims, establishing a scheme of masculine lines throughout the home. The living area opens onto a deck, making it ideal for gatherings. A skylight illuminates the maplewood stairwell, rebounding off the light textured wall. The second level landing features a wall of oriental bric-a-brac and a painting, with corridor walls clad in grey-stained open pore veneer – a comfort to walk through. A study room is located just beyond, while artworks guide the eye towards the master bedroom.

In the master suite, unique dome-shaped reading lamps sit on the bedside tables, flanking a bed that faces a concealed media console. The walk-in wardrobe is extensive, and stocks apparel for all occasions. The husband's elegant paraphernalia hints at his taste for sybaritic pursuits.

Another flight of stairs ascends to the attic, which houses the daughter's room and a spot ideal for an old boys' club – a liquor cupboard, piano and seats facing a balcony made for parties with an alfresco vibe.

An additional entrance in the basement leads to a sheltered car park. Here, one finds the helper's quarters and a guest bedroom; timber-tiles and a full-length mirror allow for a quick appearance check before heading out for an evening soiree.



Sloane Residences

For the sophisticated free spirit: appreciating nature amidst premium living. **Singapore**

Principal Leads and Team Members:
Ashvinkumar Kantilal, Diego Molina, Maria Arango, Andrew Lee, Lai Tien Yong, Jaramillo Valencia Tomas, Natapon Akomsontorn, Santiago Frederick, Doris Eng and Richard Yew *Architecture*
Lena Quek, Christian Pineda and Jason Ho *Landscape*

The linear water feature at the drop off hints at its nature-inspired architecture. A garden lawn lies nearby, while a span of greenery surrounds lounge cabanas, promoting oneness with man and nature.

Sloane Residences (formerly Sloane Court Hotel) is an exclusive collection of 52 units in two, three and four-bedroom configurations located in the heart of Singapore. Its proximity to its many amenities such as reputable schools is a boon to young families and comforting for modern urbanists.

Its distinctive hybrid design constitutes of a vertical tower massing (Skyscraper) which interlocks with a horizontal podium (Groundscraper), providing these premium units a view overlooking the neighbouring development's facilities. Conceptually, the Skyscraper portion is designed to house the premium three- and four- bedroom units while the Groundscraper houses a unique collection of two-bedroom Garden Suites.

Communal spaces are aplenty with a luxurious lawn, a playground and BBQ area on the ground floor. On the second and third floors, lounges, yoga decks and pebble seats cater to relaxation of residents. An infinity pool crowns the fourth floor with hydro-massage, a kids' pool with spouts, rain dance features and wet decks; A function room, outdoor dining and pavilion spaces seek to encourage communal gatherings.

The garden-inspired development brings residents close to nature with 6m full-height curtain walls at the lower floors that provide breathtaking unobstructed views to the outdoors.

Careful layout planning ensured that the living rooms and bedrooms enjoy a panoramic view of the cityscape and keep corridor spaces to a minimum. Shared gardens for selected units allow residents direct access to greenery.



Within, well-appointed interiors come with premium finishes of engineered timber flooring for bedrooms and marble flooring for the living and dining areas. The balcony ceilings are fitted with composite timber enhancing its nature-themed design. Bedrooms come fitted with built-in wardrobes with magic track for master bedrooms while kitchens come with built-in cabinetry, appliances and fittings.

Finally to attain its minimalist aesthetic, the details of the floor skirting and white doorframe flush with the wall and are visually connected by a 10mm groove line to give that premium clean signature finish.

Units come smart home ready and pander to the tech-savvy urbanite's demand for a fully integrated smart home system.

Show Gallery

The show gallery is situated on the same site as the actual development amidst ongoing construction, housing a fully furnished three-bedroom show unit along with sales model, sales gallery, VR room and administrative office.



Sloane

Jurong Central



Jurong Central Plaza

A vital point in design is conceptualising to the needs of users, in this case, the elderly. [Singapore](#)

Principal Leads and Team Members:

Steven Low, Ong Hwee Jin, Tong Pey Haw, Belinda Wong, Greg Cinco and Debbie Sim *Architecture*
Teh Yong Hui, Brandon Li and Chng Wei Xiang *M&E Engineering*
Lim Yan Ping and Slamet Gunawan *C&S Engineering*

The facade panel modules and materials are made of float glass, precast concrete panels with formliners and aluminium casement windows, to encourage natural light usage, while maintaining low heat retention.

Design Improvements

Various improvements were made, with wider aisles in the wet market, improved ventilation through high-volume low-speed (HVLS) fans, a drop-off porch and service bays.

Due to the ageing population, the surrounding blocks enjoy improved connectivity, with added landscaping to soften the urban hardscape.

Elder-Friendly Features

The plaza is designed for the elderly with brightly lit corridors, non-slip tiles, and handicap and ambulant toilets. The lifts are centralised to reduce travelling distance. Access corridors and the wet market were retained in the same locations to assist those with memory deterioration.

Replacing the Jurong West market after a fire razed it in 2016, the new Jurong Central Plaza has been designed as an Active Ageing Hub (AAH), providing day rehabilitation services for seniors.

Part of the revitalisation of Jurong Central Neighbourhood Centre, it consolidates the open spaces with the introduction of a community pavilion, public amenities at strategic nodes and greening of the landscape. The complex features a spacious market and coffee shop on the first floor, with senior services on the second.

Architecture

The complex is built with a pitch roof and columns, taking reference from surrounding blocks for inspiration, and adopts a “canopy of trees” aesthetic. In this way, Jurong Central Plaza reduces its impact as a new building in a developed neighbourhood, embracing the area’s vernacular.

The building mass was stepped down to mitigate obstructing the views of the nearby blocks, while pedestrian walkways connect to the blocks within the vicinity.



Toa Payoh Apex

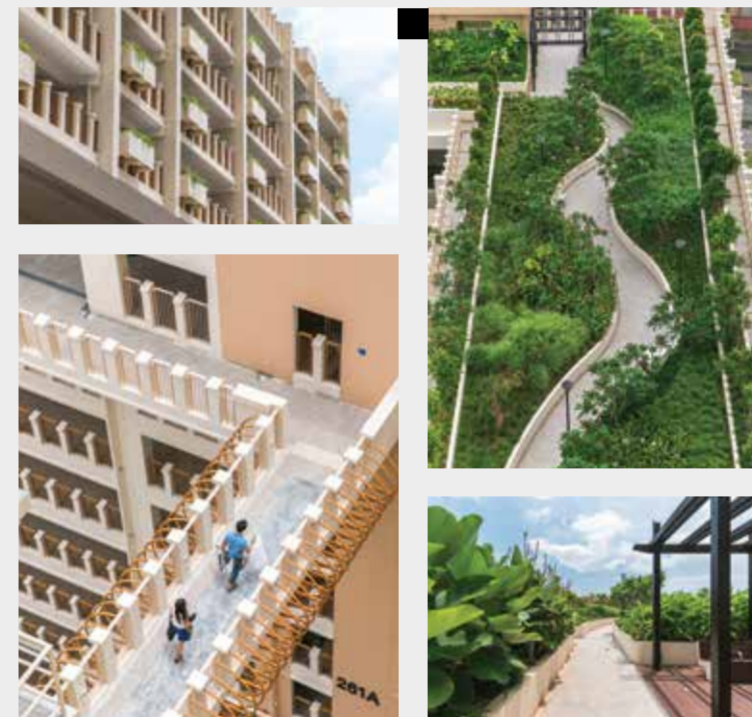
The iconic Dragon Playground gets a resurrection of sorts. [Singapore](#)

Principal Leads and Team Members:

Steven Low, Ong Hwee Jin and Greg Cinco *Architecture*
Roosen Nepomuceno *Landscape*
Slamet Gunawan *C&S Engineering*
Richard Teo and Khin Myat Thet Win *M&E Engineering*



Apex



Toa Payoh Apex is a prominent development with towers soaring high above the matured town of Toa Payoh. With a height of 36 storeys for its four residential blocks, the 3- and 4-room flats within make up a total of 557 units. The high-rise buildings are a landmark in their own right, and boast a panoramic view over the urban landscape. The development is a result of the SERS scheme, enabling Toa Payoh Apex to be built over existing land.

Designed as a homage to the famous dragon playground, various design elements were incorporated, such as the mosaic patterns, warm colours, and a lattice on the rooftops that depict the dragon “flying” up towards the sky. Additionally, two graceful old trees have been retained and incorporated into the communal areas, keeping residents in touch with yesteryear.

The Central Green is the centrepiece of Toa Payoh Apex, with both open and intimate spaces connected by meandering walkways that frame the landscape elements. Aside from the lush greenery planted around the amenities, eco-friendly features abound, with recyclable chutes, efficient lighting, regenerative lifts and the use of recycled materials.



West Rock @ Bukit Batok

Reconnecting nature with the community seamlessly. [Singapore](#)

Principal Leads and Team Members:

Steven Low, Benedick Badenas, Belinda Wong, Eliza Manglicmot and Greg Cinco *Architecture*
John Poe *Landscape*
Brandon Li *M&E Engineering*
Simon Loh *C&S Engineering*

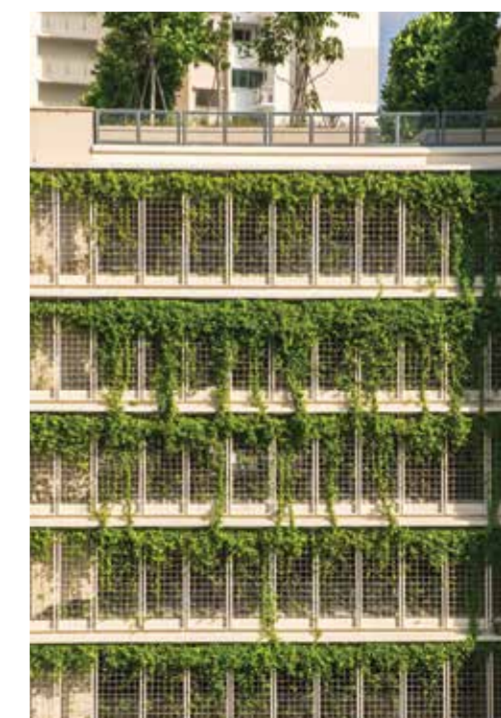


West Rock @ Bukit Batok comprises four residential blocks with a unique landscaped central spine, connecting to an adjacent park with multi-generational amenities and a wide range of facilities. The blocks also link seamlessly to an eldercare home across the park.

Once a hilly landscape, Bukit Batok West re-establishes the link between nature and living, creating a sense of belonging and exclusivity of a community. Its unique facade, colour scheme and stepped terraces were inspired by the natural hilly formations of Bukit Batok.

Lush creepers soften the multi-storey car park, which boasts a rooftop garden. The common green areas are lush and replete with facilities, pergolas and trellises for climbing shrubs.

Recyclable materials were used throughout the development, such as precast concrete kerbs, wheel stoppers; recycled rubber for the EPDM surface of the playgrounds and recycled timber decking. The extent of green practices showcases the commitment of ensuring that the development is nature-friendly.



West Rock

Eco Sanctuary is an upscale township that spans across 308 acres of undulating land in Klang Valley, a short way from Kuala Lumpur.



Parque Residences

Return to a resort-styled home of modern living.
Malaysia

Principal Lead and Team Members:
Tan Kee Keat, Hasbullah Bin Abdullah
and Lu Chun Wei Architecture

The Parque Residences, nestled within the Eco Sanctuary township, highlights the balance between modern resort living and the natural environment. Parkland accounts for almost half the development's acreage.

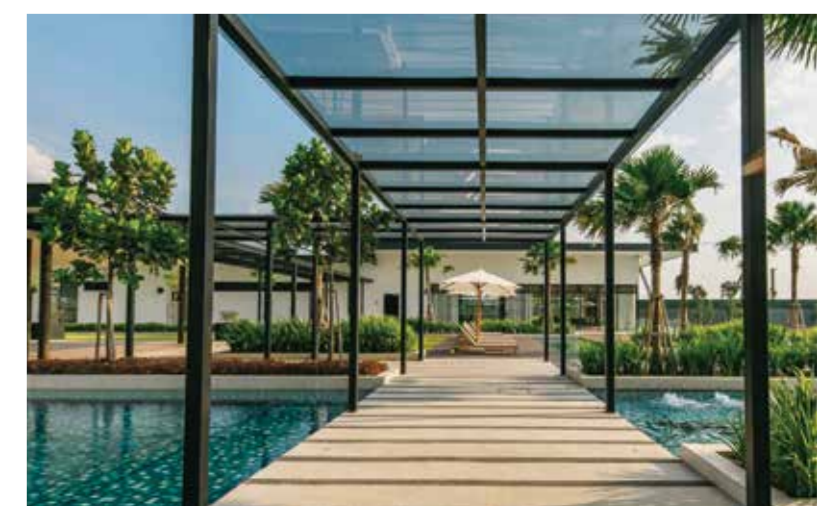
The three distinctive residential towers house one-, two- and three-bedroom units, with double volume spaces for the three-room layout. It was designed in a staggered rhythm, with private balconies wrapping each unit.

Courtyards are located on every fifth storey to break the traditional condominium configuration, while the towers are oriented to optimise natural sunlight and ventilation and to afford breathtaking views from the units.

A clubhouse sits in the middle of the development, and a man-made lagoon doubles as a rainwater retention pond. The parks and gardens encourage community building, with various sustainable and innovative features that reduce energy consumption, including storm-water management, solar energy and other energy-efficient amenities.



Parque Residences meningkatkan pengalaman kediaman berunsur moden dan mewah dengan menampilkan 3 menara kediaman berdensiti rendah yang menawarkan 25 jenis pelbagai kemudahan termasuk hampir separuh dari keluasan tapak diperuntukan untuk kehijauan semulajadi.



Parque Residences



Eco Sanctuary Mall

Within the luxuries of modern green living in Eco Sanctuary, lies a holistic centre for the needs and wants of residents. [Malaysia](#)

Principal Lead and Team Members:
Ng Cho You, Robert Brodeth, Haniffi Harun
and Nani Khalid Architecture

Terletak di tengah-tengah kejiranan mewah dan eksklusif, 'Sanctuary Mall' pasti menjadi destinasi tumpuan untuk keperluan harian bagi penduduk setempat.

Aside from Parque Residences, the Eco Sanctuary township holds more gems for modern dwellers like Eco Sanctuary Mall. Envisaged as an appealing and holistic venue based on a strip mall concept, it utilises impressive interiors to generate interest and bolster lifestyle retail.

Surrounded by over 150 lifestyle shops cum offices in the vicinity, the mall will house 50 retailers and service tenants, some with F&B offerings, convenience services and lifestyle products. A modern interpretation of retro suburban strip malls originating from California in the 1920s, Sanctuary Mall rejuvenates the consumer experience through a curated mix of retail outlets and eateries.

To improve the consumer experience, the design utilises an outstanding interplay of materials, art installations and landscaping. A deep facade sporting aluminium-lined louvres wraps the side elevation and visually screens the mechanical services behind, for a clean aesthetic.

The mall's centrepiece is an extensive angular roof. Supported by high steel columns, its passive design provides shade to the semi-outdoor roof garden, as well as the patio on the northern facade of the mall. A centralised pedestrian walkway echoes the strip mall concept, defining the crowd traffic flow. The central atrium encourages connectivity through the different floors, allowing customers to get an overview of the mall's offerings.





Gold Coast Sea View Apartment

A coastal beauty that capitalises on its location and urban freeplay for its residential and office towers. **Indonesia**

Principal Leads and Team Members:
Kurjanto Slamet, Loh Kah Wai, Patricia Widjaya and Giovanni Bautista *Architecture*
Teo Boon Kiat *Interior Design*
Lena Quek and Gener Lopez *Landscape*



Set amidst a mature mangrove nature reserve waterfront, the architectural language reflects the serene nature of sea breeze. Driven by the concept of an Eco-Isle, or Ecological Isle, the development was conceived as a series of "isles" beauty, inspiring its resort-themed residential interiors.

The Residential towers were designed to maximise the sea-view of the site with a "Y" shape layout, providing spectacular views out to the Java Sea. 32 terracing units line the podium front, located conveniently to multiple pools on the ground floor.

The "C" shape arrangement of the towers was angled with the intention of a vast communal space on the ground floor, where one can indulge in the facilities and multi-faceted outdoor environment. The walk among tree houses, ecological ponds and aromatic species of flora, complete with the mangrove foreground; enable residents to fully embrace nature. On the podium roof, a multi-purpose floating pavilion takes centrepiece of the facility floor.

The fine lines created on the building facade and the full height glass echo a contemporary lifestyle concept, expressing the modernity of the development.





Marvell City

An exclusive integrated development with abundant amenities.
Indonesia

Principal Leads and Team Members:
Kurjanto Slamet, Loh Kah Wai, Patricia Widjaya and Giovanni Bautista *Architecture*
Teo Boon Kiat *Interior Design*
Lena Quek and Gener Lopez *Landscape*
Jerome Tan *Lighting*

Marvell City, located along Surabaya's major thoroughfare Jalan Ngagel, is predicated as a catalyst for the city's forthcoming progress. Inspired by the idea of an idyllic walk in the woods, this urban sanctuary is multi-layered, depicting the complex layers of a forest. The master plan comprises four floors of lifestyle retail, four 30-storey residential towers, a 16-storey hotel as well as a 12-storey school tower.

Intended as a self-sufficient development with an interwoven circulation that links all four areas seamlessly, Marvell City is an amalgamation of two separate plots totalling 2.5 hectares. An access road between each plot will allow communal events such as a festival street, a focal point of the development.

This layout grants maximum exposure to the retail and hospitality sections, while in contrast, provides privacy for the residential areas. The occupants of the 1,560-unit towers will enjoy a complete range of recreational facilities, including lushly landscaped gardens, swimming pools as well as other water features. All this while spoilt for choice from the shopping and dining establishments at the retail tower.



Sebagai negara yang merupakan salah satu pasar ekonomi top dunia dan Asia, Indonesia telah menunjukkan peningkatan yang signifikan dalam 5 tahun terakhir ini, terutama dalam arsitektur & infrastruktur yang tentunya akan terus meningkat dengan karakter dinamisnya tersendiri.



Wang Residence

Modern facilities within a two-tower development, beautified by nature.
Indonesia

Principal Lead and Team Member:
Kurjanto Slamet and Loh Kah Wai *Architecture*

The towering apartment at Jalan Panjang redefines the family living in an urban area, surrounded by nature for visual appeal and benefit the health of residents. Underscoring the statement of an "urban sanctuary", the Apartment at Jalan Panjang aims to emerge as an oasis amidst the hustle and bustle of Jakarta.

Complemented by an extravagant range of facilities, the 32-storey building houses 264 units offers the inhabitants an integrated urban lifestyle, all within the residence.

The verdure on the ground floor creates a serene experience among the greens, while the towers are embellished with sky gardens and rooftop facilities. An enticing view of the vast pool facilities and elevated gym between the two towers, encapsulates the Wang Residence, building a community for modern families with an appreciation for greenery.



Puri Mansion Apartment

Carefully angled residential towers set in a prime location for riverside living.
Indonesia

Principal Leads and Team Members:
Kurjanto Slamet, Loh Kah Wai, Giovanni Bautista, Ma Gracia Del Agus Cruz, Jessica Kresnan and April Noor *Architecture*
Lena Quek and Gener Lopez *Landscape*

Located in a prime location, a stone's throw from Puri Indah, Puri Mansion Apartment is set to be the visual attraction of the district. An addition to the existing Puri housing complex, the four residential towers introduce the concept of "riverside living" and is well-integrated with facilities.

The architecture facade displays prominent repeated elements through interspersed staggered balconies, inspired by the movement of undulating water.

The towers were designed in an efficient double loaded slab block and placed on-site, with orientation to maximise the north-south vista from each residential tower. An additional 50 town house units were also introduced with keen attention to placement.

A sky garden builds social activities closer to one's doorstep, while an iconic bridge connects the main access. The environmental deck orders features several facilities, with abundant parking for residences.





Taipei Fubon Bank

Realigning the office to encourage open communication, outfitted with modern tech capabilities. **Singapore**

Principal Leads and Team Members:
Elli Wang, Susana Ng, Michael Gong, Wafi Afandi and Muhsin bin Ithnai *Workplace Interior*

The full refurbishment of the previous offices in Singapore, Vietnam and Indonesia brought about the true intention of the brand's corporate culture and identity, dotting local inspiration into the open collaboration concept.

Inspiring a sense of belonging to the office space, the interiors were treated to capture the interconnectivity between colleagues, allowing for a cohesive unit to tackle challenges as a team. This progressive space combines formal and informal meeting areas, creating a melting pot for creativity within the working environment. Interesting breakout areas were introduced at the front of the house, followed by a lounge space that repurposes as a learning area.

State-of-the-art technology augments the Treasury Trading room and throughout the office, creating an open and flexible workspace.

Mắm Concept

Experience a different side of Vietnam's history, told through a unique dining experience. **Vietnam**

Principal Leads and Team Members:
Raymond Thai, Le Anh Triet, Nguyen Thao Ngan and Le Huyen Anh *Interior Design*

Mắm không chỉ là đặc sản mà còn là quốc hồn quốc túy của ẩm thực nước Việt.

Dự án “mắm concept” truyền tải tâm hồn Việt Thông qua 3 tầng không gian.

Tượng trưng cho 3 vị đặc trưng: cay, ngọt, mặn của ba miền: nam, trung, bắc.

Cuối cùng là cả 5 giác quan được đánh thức cùng lúc.



A culmination of history, taste and family values, the interiors of Mắm deliver an immersive experience throughout the outlet's three levels: the ground floor is dedicated to an reception and dining area, the first floor contains an additional dining area and kitchen, and the second floor is an intimate area, perfect for a family gathering. Each floor was designed to reflect an aspect of "taste".

The story of Vietnam's villages begins with the front facade of breeze block wall motifs and fish sauce vases, hinting at the narrative of heritage. Thematic earth-grey tones are coupled with a sense of local culture, through a selection of curated paraphernalia such as ceramic pots, decorative plates, rice paper partitions and fishing nets. The ground floor welcomes guests with the theme of "spiciness", symbolising the arduous lifestyle of Vietnam's past through textured walls and floors.

The second floor portrays "saltiness", a testament to the perspiration shed to produce their specialty fish sauce. Beige and brown are among the richly organic colour palettes incorporated into the interior space, giving the walls an air of earthiness reminiscent of rural villages.

The third floor exemplifies sweetness of the sauce with the warmth of love – a family area, with an indoor garden emulating the style of old Vietnamese houses where families congregate after a meal. The décor is furnished with vintage village and family photos, elaborating the priority of the family nucleus. This personifies the different spices and tastes for diners to experience the authenticity of Mắm.



Mắm Concept

Engineering



Watercove

Smart engineering allows this dwelling to incorporate energy savings and a cooling interior for the tropical climate. **Singapore**

Principal Leads and Team Members:
Shahrom Bin Mohamed Ariff, Mohamed Jawith K and Chng Wei Xiang *M&E Engineering*



Watercove is an 80-unit housing development designed by P&T Consultants, comprising 47 units of strata terrace houses with basements, 29 units with a basement and attic. The list continues with two exclusive pairs of strata semi-detached houses each with a basement, a subterranean car park and a swimming pool at Singapore's northern tip, near Sembawang Park.

The development exudes a serene ambience, coupled with lush landscaping and an unmatched seafront view. Designed with enhanced building orientation modelling to achieve improved thermal comfort for residents, it reduces the need for auxiliary cooling. The Optimal Window to Wall Ratio (WWR) for east and west facades facilitates better ventilation and minimises heat gain to the building.

Energy-efficient air-conditioning systems are provided for the houses, achieving a minimum of 30% in energy savings. In addition, heat recovery devices are designed to make use of waste heat from the air-conditioning condenser units for hot water heating.

Certified by BCA with Green Mark Gold Plus for its energy efficient savings, the project includes solar panels to reduce common area usage and promotes sustainable car usage with electric vehicle charging systems. Motion sensors at car parks and staircase lobbies automatically turn off lighting when the spaces are not in use.

Lake Grande



T-Space

An industrial space utilising greenery as solutions. **Singapore**

Principal Lead:
Richard Teo *M&E Engineering*

A design by AC Consortium, T-Space is sited within Tampines Industrial Park, and features a 9-storey building with a basement car park and landscaped garden on the rooftop. Approximately 4,700sqm is dedicated to green spaces, out of its 2.7ha highly triangular plot.

Greenery is found across most levels, with an abundance of plants punctuating several corners of the building. On the 5th storey car park, the plants shield and cool the building below. This visually connects with the landscape on the 1st and 9th storey, softening the building edges.

The building facade consists of full-height glass cladding, framed by precast concrete walls and aluminium louvres that define the extent of the units externally.

The roof garden and landscaped deck provides an important social area for the tenants to interact, work, play and bond as a community.

Lake Grande

With improved methodologies reducing construction time and material waste, productivity was still optimal, despite a production headcount reduction. **Singapore**

Principal Leads and Team Members:
Shahrom Bin Mohamed Ariff, Teh Yong Hui, Vivian Feng, Mike Choo Ming Yong and Jimmy Ang *M&E Engineering*



A residential project in Singapore by ADDP Architects, Lake Grande features four 17-storey apartment blocks. Adopting Prefabricated Prefinished Volumetric Construction (PPVC) methodology, the 710-unit project's concrete PPVC modules were manufactured off-site with prefinished fit-outs and Mechanical, Electrical and Plumbing (MEP) services. The assembly of individual modules and final connections of MEP services were carried out at the main development site. These innovative construction methods greatly enhanced construction productivity with reduced manpower and minimised construction waste on site. All Quality Assurance/Quality Control processes were completed in the PPVC factory prior to module delivery to site, ensuring improved quality control.



Engineering

Apple Store

The iconic brand demanded precise engineering to encompass its identity. **Singapore**

Principal Lead and Team Members:
Goh Teck Sin, Lim Yan Ping and Derek Neo *C&S Engineering*



The second major Apple Store is located in Singapore's renowned Jewel Changi Airport. The clean aesthetic designed by RSP Architects reflects the purity of the brand required concealed C&S Engineering, while Rankine&Hill bolstered its structural considerations and its geometrical necessities.

Having worked on the Apple Store Orchard, the same key elements that bespeak the brand's design parlance are in effect here, including the signature double-height glass windows. Spatial balance is the main outstanding feature, along with the exacting material combination of timber, metal and stone from California.

Apple



Outpost Hotel, Village Hotel & Barracks Hotel

A range of hotel designs to meet the demands of various guest personas
Singapore

Principal Lead and Team Member:
Vivian Feng Wei and Jimmy Ang *M&E Engineering*



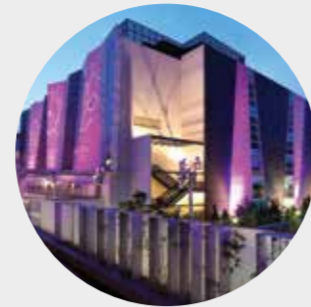
An integration of three distinctive hotels – Outpost Hotel, Village Hotel and Barracks Hotel at Singapore’s hallmark island resort, Sentosa, the accommodations total 839 exclusive guestrooms and was designed by ARC Studio Architecture & Urbanism.

While the Village Hotel holds 606 guestrooms and offers an experiential stay for families and business accommodations alike, the Outpost Hotel of 193 guestrooms caters for the more sophisticated guest, with stylish interpretations of colonial black and white design. Its own rooftop pool and bar adds a posh upscale stay for travellers.

The 40-guestroom Barracks Hotel is built on existing colonial conservation buildings, meticulously decorated in sophistication and elegance. It is befitting of the hotel’s aforementioned past, successfully curating the Events Center and Mess Halls. Meticulously restored from heritage buildings, the hotel offers diverse and shared experiences for mid-scale events, retail and F&B.



Marvell City



Trinity Christian Church



Park Hotel



Heartbeat @ Bedok

Lighting Up

Civilisation has always looked toward light. Imagine the influence on architecture.

Illumination can intensify an area, downplay an aspect or present focal points in different ways. With an artful interplay of shadows and feature lights, our dedicated team injects character into developments across cities and beyond. Lighting design influences the world – it directly benefits flora, fauna and onlookers, evoking drama and creating a sense of place.

Different layers of light and colour intensity can have impactful effects on human life, the space and the wider environment. Applying dynamic colours and bolstering visibility through shape and form, lighting may be intangible, but the emotions it inspires are not.

Up to speed with the latest tech and safety conduct, the lighting team recommends cost-effective solutions in lighting products for your upcoming projects. Over the long term, this ensures that both operational running costs and environmental impact is kept low. Notable projects include Mon Jervis, Park Hotel, Heartbeat@Bedok and Trinity Christian Centre.

CRAFTING A BRAND

Clarifying strategies and creating value across a wide range of industries, IMMORTAL crafts brands from inception to reality, communicating their values to consumers. Injecting a unique user experience into a product, service or a location is our specialty.

Every memorable product, award-winning mall or household name is a well-differentiated brand idea.



1 Defining the Vision

Overlooking this can drastically undercut a brand’s relevance. Be it FMCG, Corporate, Lifestyle, or in the Built Environment, IMMORTAL’s brand experts work with stakeholders to articulate their vision and brand language, keeping tabs on market feasibility and target audience appeal. This culminates in a brand blueprint.



2 Developing the Strategy

Strategy is about forming up various plans in line with a fully-articulated concept. These may include methods to engage with the brand’s potential market, the sorting of the brand’s offerings into a coherent business structure or brand architecture, and the creation of communications plans.



3 Realising the Brand Identity

Our team creates each brand’s identity from scratch, drawing inspiration from the brand’s DNA to create meaningful brand visual identities that not only convey the brand’s vision, but also relates to each brand’s target consumer.



4 Environmental Wayfinding

Within built environments, it is crucial to guide everyone to their intended location. Navigating one’s way should be a seamless and intuitive experience. This is further augmented today with digital signage systems that offer greater interactivity and user engagement.



5 Brand Expression

Applying the brand onto various collateral is a crucial initial point of user engagement. These may take the form of hard copy marketing content or digital formats such as websites and social media platforms. Should there be a point of sales, interior decoration, packaging, personnel attire, grooming and verbage are all elements that must communicate the same brand language.

WAY FINDING

The staple for every development, to ensure all who wander are not lost.

When was the last time you went about a place, looking for an elevator or escalator, or the way to the nearest loo? That wish in your head – “If only it were easier to navigate through this!” – is what Wayfinding is in essence.

Yet that is just scratching the surface. Wayfinding is a blend of factors that culminates in an experience beyond that is both seamless and intuitive. It is an intangible design that the user senses. Our wayfinding team at IMMORTAL share their insights.

“If only it was easier to navigate through this”

Place-making and Orientation

This process is crucial. Effective place-making entails identifying key locations in a development and treating each space so that users understand their whereabouts. It may be as subtle as colour themes, textures or a lighting motif. Every element has to be in line with the Brand Identity.

Directional Signage

Directing human traffic is an intricate process, be it bringing people towards the centrepiece of a project, or crafting a smooth flow around the development.

Holistic Brand Experience

Signage should be easy to understand even as it conveys the same brand language throughout. A distinct signage system forms a key part of the brand experience, and guide users to where they wish to be.

What’s next? We already have Braille directions incorporated onto many floors, along with other measures reflecting Universal Design.

Look out for the next edition of 360 Circle 19/20, where we go in-depth on wayfinding for various needs, from those afflicted with Dyslexia to Dementia.

Synergistic Specialisation –

Individually Skilled,
Collectively Dynamic

Turning a built idea into reality requires a large set of moving parts, working in perfect synchrony towards the same end goal. Technology equipped and with talented teams within their own specialities, ONG&ONG's studios express design flair and push boundaries, for end-users to Experience Beyond.

360 Solution

Brand Engagement	Environmental Wayfinding	Experience Design	Engineering	Project Management	Project Solutions	Workplace Interior	Masterplanning	Architecture	Interior Design	Landscape	Lighting
Market Insight	Planning and Analysis	User Experience Strategy	Mechanical	Project Management	Construction	Building Studies	Vision & Strategies	Master Planning	Advisory & Consultancy	Master Planning	Architectural Lighting
Brand Audit	Wayfinding Strategy	Service Design Consulting	Electrical	Project Development	Design & Build	Workplace Studies	Land Using Planning	Architecture	Space Planning	Space Planning	Equipment Cost Control
Brand Strategy	Signage System and Design	Design Thinking	Civil	Construction Management	Turn Key Solutions	Space Planning	Connectivity	Ideate and Create	Test Fit	Blue & Green Solutions	Operational Cost Control
Brand Expression	Environmental Graphics	Ethnographic Research	Structural	Cost Management	Contract Works	Interior Design	Urban Infrastructure	Conceptualisation & Analysis	Feasibility Study	Sustainability	Lux Level Calculations
Brand Management			Fire Safety	Place Management		Project Management	Environmental Sustainability Design	Research & Development	Master Design Guidebook	Playground Design	Lighting Controls
Environmental Branding			Environmental			Sustainability	Landscape	Space Planning	Turn Key Solutions		Lighting Audits

Brand Engagement is an analytical process, but also one that requires much imagination. It is about crafting experiences that foster relationships between brands and consumers. With over 27 years of experience and a client list brimming with household names, IMMORTAL is renowned for its branding programmes that have helped many clients grow their businesses. Offering a comprehensive suite of services including Market Insight, Brand Audits, Strategy, Expression, and Management, IMMORTAL is committed to helping any brand create an authentic and enduring identity.

IMMORTAL delivers effective wayfinding, at every point of a journey. It is a system of signs and symbols to enable easy navigation. No matter the complexity, it is the primary objective to make every space more user friendly. Wayfinding has the capacity to optimise and enhance the built environment, improving circulation, connectivity and use of space.

Experience Design is about altering human experiences through the process of Design Thinking, where we imagine and conceive in terms of utility. Human experiences are in constant flux, where improvement, progress and advancement unfold and develop over time – ultimately leaving us better positioned than before. At ONG&ONG, our award-winning Experience Design team finds ways to elevate and improve an experience. Whether it's a minor tweak or something completely reimagined, all the projects we work on have one thing in common: making the end-user experience better.

Beneath the veneers of colours, curved lines and textures of all dazzling designs are the hidden machinery and mechanisms that make everything possible. Inventive engineering becomes the basis through which creativity can be transformed from imagination and turned into living, breathing reality. With decades of experience in the industry, Rankine&Hill consultants have collaborated on some of Singapore's most iconic designs. From Mechanical & Electrical to Civil & Structural, as well as Fire Safety and Environmental solutions, we continue to deliver a full-range of comprehensive engineering solutions that bring projects to fruition.

Ensuring projects are well organised and cohesively executed are the fundamentals of our business. But it's more than just putting the right people in touch or assembling the ideal team. Our goal is to connect the dots and tie up the loose ends to make sure projects are as easy and cost-effective as possible. The process is a practical one. First, the objectives and parameters of a given project are properly ascertained. Following which, development is carefully planned and mapped, all in an effort to ensure complete alignment and efficiency throughout the construction phase. For us, success means a stress-free experience for our clients.

Our newest Specialist Studio is ideal for overseeing small to medium-scale projects. Providing Design & Build expertise across a range of industries and sectors, Project X:lon specialises in guiding turnkey projects from concept to completion. Our clients will enjoy the convenience of a one-stop shop solution. Where the knowledge of a multi-disciplinary property and construction consultancy, with extensive local and international experience, can provide a diverse array of services including project management, cost management & quantity surveying, development management and contract work.

The perfect corporate interior goes beyond simply creating functional workspace. Although aesthetic quality and style are a must, the environment must be synergistic and inspirational. After all, productivity is the name of the game. At SCA Design, we go beyond traditional interior design, altering the notion of what a working environment should encompass. Combining in-depth building and workplace studies we determine the ideal parameters for project management. In addition, with input from clientele and the end-user, space planning is used in tandem with flawless interior design, resulting in turn key work spaces that exemplify what the modern office should be.

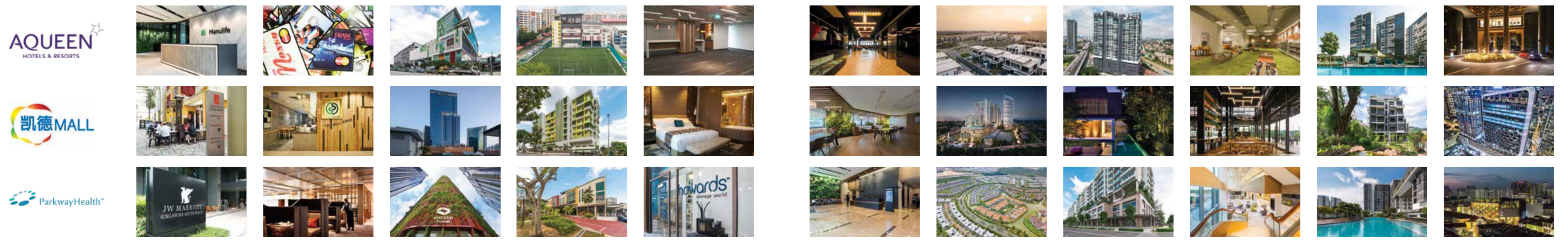
Cities rely on experienced planners when creating infrastructure master plans. The process of conceptualisation demands imagination and a progressive mindset. It comprises a plethora of considerations, including the accessibility to civic amenities, drainage systems and encouraging communities. A well-designed city is future proof, catering to the evolving needs of its inhabitants for decades.

For nearly half a century, ONG&ONG has been synonymous with architectural excellence. Regardless of scale or typology, our extensive experience and repertoire of knowledge has seen the firm deliver countless projects of the highest calibre. Today, the firm operates in nine countries around the world, as we build on a tradition of excellence, working to grow our reputation for dependability and innovation in the region and beyond - delivering a comprehensive range of services that includes individualised expertise in Master Planning, Brand Engagement, Experience Design, Interiors, Landscape and Lighting.

Residential or commercial, public or private, institutional or infrastructural, interior design is crucial no matter the project. From forming the heart of a home to setting the tone for a corporate or professional space, the potential of a space is realised through interior design. Be it functionality or comfort, on luxury or utility, ultimately the manner in which we conceive a space influences how it will be utilised. At ONG&ONG our interior design experience runs the gamut of typologies and scales, with award-winning projects the world over as proof of our ability to truly define any space.

The modern built environment is increasingly characterised by the integration of nature. Regardless of typology and scale, projects today make it a point to include greenery where possible. At ONG&ONG, our track record of award-winning projects underscores the importance we place on landscape design. From biophilic environments and naturalistic designs, to the creation of sustainable microclimates, our landscape team endeavours to find the optimum levels of greenery to benefit and enhance the built environment.

Lighting design is crucial, yet too often overlooked. Lighting can highlight and accentuate any space. It can alter the ambience or mood of a given setting, bringing life, warmth and more to any environment. Lighting has the capacity to transform a solid project into a superb one, where just the right mix of shadow, light and colour can easily augment the end-user experience. Bright or low-key, fluorescent or neon, simple or intricate, we at ONG&ONG fully appreciate how crucial a project's lighting design can be.



www.immortal.com.sg



oxd.ong-ong.com



www.rankine-hill.com



www.proj-innovations.com



www.proj-x:lon.com



www.sca-design.com



www.ong-ong.com

Specialists

THE TRUE COMFORT IS BEING ALIVE.

— Werty Ho



...Experience Beyond indeed

— Ashvinkumar Kantilal

Group Chief Executive Officer Ashvinkumar Kantilal led a mountaineering expedition of eight employees on ONG&ONG earlier in August, with Chairman Ong Tze Boon and another veteran climber Lim Kim Boon. Braving unforeseen weather complications and treacherous grounds, fatigue and injury, the team did not summit the Ong Teng Cheong peak and Ong Siew May peak, but success is measured by the experiences beyond, much less the endpoint.

The journey was to recce for upcoming golden jubilee of ONG&ONG in 2022, and as homage for our late founders.

We come up close and personal with Werty Ho and Archana, respectively ONG&ONG's resident photographer and design manager, to learn more about their adventure in Kazakhstan and Kyrgyzstan.

ONG&ONG'S TEAM
ONG TZE BOON • ASHVINKUMAR KANTILAL
PATRICIA TAN • VANESSA EE • GOMATHY ARCHANA
DAN GOH • PAUL ROGER LIM BENSON WEE • WERTY HO



Archana

Werty Ho

What made you decide to join the expedition?

A: It sounded like an adventure of a lifetime, and indeed it was!

W: Footage of Boon and his team's climb back in 2016 made me wonder how will I adapt to the climate, and became a bucket list.

Tell us what the trip meant for you.

A: We learnt life lessons from Boon, staying fit and experiencing life outside of the workplace. It helped me gauge my fitness level.

W: Photography for ONG&ONG has brought me to many places in Southeast Asia, but nothing like this one. It was breathtaking.

Apart from the training, how did you prepare for it?

W: To tackle acute mountain sickness, we stuck to a 60-day training regime and various dietary supplements. The challenge was fitting that into our daily work schedules.

A: Same as Werty, and as Boon had a lot of experience of the world of mountaineering, he shared with us how to tackle sicknesses like nausea, insomnia, dyspnoea among other challenges.

What were the challenges your team faced?

W: With zero experience mountaineering, we had to get quickly acquainted with our mountaineering gear while doing a river crossing and ascend a 45°-inclined ice slope.



A: I realised how much oxygen means to the body, impacting our physical abilities to the point where walking, feels like an uphill climb.

How were the living conditions there?

W: Living on the glacier for 5 days was amazing. Due to climate change, the glacier is constantly on the move, and you can hear the ice cracking beneath you when sleeping at night. Temperatures were -5°C at night, and 10-15°C in the day. I had simple meals like biscuits, nuts, chocolates and eggs.

A: Woman vs Wild! It was worth it though, with such gorgeous Instagrammable pics. I brought some Indian delights, which kept my spirits up.

Share with us your most memorable experience.

A: It has changed my perspective of a holiday. I never saw snow up-close, and it humbled me. I revelled in the countless stars at night, and Werty captured a perfect shot of it!

W: I dropped into a giant crevasse not once, but twice. There are huge cracks in the ice, and I stepped on a deceiving layer of snow. Stuck, Dan pulled me out with the safety rope. It was like a movie.

What is your take away from the challenges you faced?

W: I learnt to treasure my life, and that time is very short.

A: The value of perseverance and experience pushed us through this tough venture.



Anything you learnt that can be applied to your daily lives?

W: Teamwork and Chemistry. Mountaineering is like work, you have to give your fullest support to the team, to achieve the end goal.

A: Same as Werty, and to always be willing to learn, and step out of my comfort zone to grow.

Would you do this again?

A: Judging from my training (or lack thereof), I would, and suggest everyone to try it at least once!

W: Definitely, but maybe not so soon.

EXPERIENCE AND BEYOND 80s

LETTING OUR HAIR DOWN FOR AN EVENING OF RETRO FUN



Held in the evening of the same day as BeyondX, ONG&ONG ventured to Singapore's TimbreX @ The Substation for an 80s-styled celebration. With disco balls, Triumph motorcycles, and renowned 80s band Energy + Douglas Olivero, it was a night to be remembered.

Employees were decked in loud 80s outfits, including Indonesia's Ghostbusters with Slimer (more on this below). Notable characters included Waldo, Mr Men & Little Miss and the SCA Baseball squad.

The highlight of the evening was our very own "ONG&ONG's Got Talent", with our various offices across Asia travelling to Singapore for the competition. We discovered a variety of talented performers, with the main winner being Def Points, the Singapore office's charismatic rock band.



WHO YOU GONNA CALL? GHOSTBUSTED!

Our beloved Ghostbusters were brought in for questioning in Singapore for disposing their realistic Particle thrower, Bacharach Sniffer 300s and Particle Accelerators, used to weaken ghosts and capture them. Slimer was not detained, and the team returned to Indonesia with their equipment. Some ghosts will be sleeping better, but not for long!



RUNNING AHEAD OF THE GAME

Vietnam's marathon onslaught continues with Annie, Raymond Thai and friends from the ONG&ONG Running Club; completing the VnExpress Marathon 2019 in Quy Nhon, Vietnam.

Raymond Thai, Director of ID in our Vietnam office, completed the full 42km marathon, while Annie Le accomplished the 10km. And that's not all. The more recent Khmer Empire Marathon 2019, held in front of the acclaimed Angkor Wat

temple in Cambodia, saw the team completing the half marathon effortlessly.

The team passed many historical monuments, and conquered more grounds, somewhat like a temple run (remember the old addictive iPhone game?).

PS: While 13 of them completed the half marathon, Annie Le Huyen ran 33km by accidentally running into the full marathon route. Maximum Effort!



Beyond All Things

Head over to shop.beyond-allthings.com to grab your goods today!



Mojura

Previously known as Beyondpak, Mojura is our most configurable creation yet – a bag for any purpose and journey. Each component is procurable, and [four variations to meet your every need.](#)



Chiryu

A backpack when you need it, a tiny pouch when you don't. [Perfect for travelling.](#)



Porto & Daburo

[Tailored for modernists](#), both designs are super lightweight and bear our signature circle motif. While the compact Porto is ideal when travelling light, Daburo holds a tablet and the rest of your paraphernalia.

Terashi

We try to be environmentally conscious in our own little way every day. Terashi is an inflatable lamp, and uses solar energy to charge its strong LEDs.

[Waterproof](#), floatable and with three LED light mode [selections](#), its utility may very well save your life!



SG Mark

Several ONG&ONG Group projects were winners at the Singapore Good Design (SG Mark) Awards. SG Mark is a benchmark of good design and quality, presented to designs that impact businesses and communities in Singapore and beyond.



Winners Of The Asia Pacific Property Awards 2019

The Asia Pacific Property Awards celebrate the epitome of achievements by property professionals operating in various typologies. It is a world-renowned mark of excellence. The awards are organised by regions around the globe, with participants entering at their regional level, judged by experts across a range of property disciplines.

Each country's best developments are awarded 5 stars, while a selection of the region's highest scoring 5-star winners go on to compete at the International Property Awards later in the year.

We are proud to announce that we garnered several awards at the recent Asia Pacific Property Awards held at Marriot Marquis Queen's Park, Bangkok.



Women's International Feature

Our Debbie Sim was featured on Building and Construction Authority (Singapore) during International Women's Day. She is just one of the many heroines in our office. Our work would not be the same without her input, along with the contributions of all the women in the ONG&ONG family. We celebrated Women's Day at Bar 9 in our Singapore office.



Running Anywhere for Vietnam Charity

The ONG&ONG Vietnam Running Club invited other country offices to run for charity, where sponsors from the UpRace 2019 donate 1000 VND (Vietnamese Currency) for every kilometre completed. The race was held over 12 days, where participants can clock up to 60km anywhere in the world for either Newborns Vietnam, GreenViet or VietSeeds Foundation.



Joining the Talk Towards Green Cities

ONG&ONG attended in a workshop that shared on Singapore and Denmark's transformation towards sustainable cities, and tackling climate change. Graced by the ambassador of Denmark, it was heartening to know other industry players are on the same green page.



Top 10 Architects 2019

ONG&ONG received an award as one of BCI Asia's Top 10 Architects this year, measured by the aggregate value of projects. Held at Fairmont Hotel in June, it was a pleasure to meet fellow industry practitioners.



A Forefront Leader For Technology

The Jurong Nursing Home received a BIM Award for incorporating BIM into the project's workflow. The Unified Project Model allowed for digital workflow implementation, with paperless reviews/ approvals and open collaboration amongst all project stakeholders.

The News Stand



BIM Masterclass by Our Experts

Our Digital Technology experts Chander Gupta and Jahzeel Magdadaro held a BCA Masterclass earlier in May 2019, covering the importance of Computational BIM in Integrated Digital Delivery. Held in Singapore, the aim was to build awareness of the innovative problem-solving processes, which optimises productivity in various workflows of the built environment.



HDB Design Awards

Jurong Central Plaza, Singapore, was presented HDB Design Award's Certificate of Merit, Design, under the Completed Projects (Rejuvenation) Category.

It was designed as an Active Ageing Hub with rehabilitation services for senior citizens, and introduces open spaces and green landscape for the community. Additionally, West Rock @ Bukit Batok in Singapore received a construction award from HDB.



Sustainable Cities can Start Right Now!

Two brave green advocates from Hwa Chong came to share with the ONG&ONG family how reducing our personal usage of single-use plastics such as straws, can help the environment tremendously.

Fun fact – Use a tote bag 327 times to match the carbon footprint of a plastic bag!



Igniting Fires in Bright Minds

Students from Nanyang Polytechnic (NYP) were given insights to our company, along with a tour around our new office. With their thirst for knowledge, it is always a pleasure to impart our 360 Solution to the next generation.



iWeb 2.0 App Launch for Everyone

It is finally here. ONG&ONG's very own app for all your needs (well, most of them). Available on Apple Store and Google Play, the platform allows employees to apply for leave, read up on the latest social media happenings around the office, track Misfit points and more. Something not all companies can boast about!



Land Transport Excellence Awards 2019

Public transport for Singapore is a vital aspect of a growing city, and it was a pleasure to be involved in the design.

Wendy, Lai Meng and team achieved the Best Design Rail/Road Infrastructure Award, for their Downtown Line designs. Working together with T.Y. Lin International, the partnership yielded impressive results.



Having a "Huat" time!

Earlier this year, ONG&ONG welcomed family, friends and industry partners to a Chinese New Year gathering, held at the Dalvey Estate in Singapore. Fire dancers, stilt walkers and acrobatic lion dances were aplenty at the unforgettable carnival, sharing luck with all who attended with an impressive "dragon lo hei".



Birthday Celebrations

Feeling down when (possibly) working on your birthday? Fret not! The HR teams from across Asia will bring the party to your office. Celebrating each month's birthday babies together, there will be food, activities, and fun. Don't miss it!



Health is wealth, and we're here to help!

Keeping fit in an enjoyable way, Zumba sessions are organised weekly at the Singapore office, while the Malaysia office is getting a kick out of self-defence classes! All are welcome.



Corporate Retreat

A corporate retreat in the Singapore office was held for the management team, addressing topics of repositioning and thought leadership. Colleagues from across Asia flew in for updates on the latest achievements and smart initiatives within the family.



Sharing is Caring

Contributing to our corporate social responsibility, BeyondX allowed us to widen our perspectives and connections, with BIM Life connecting ONG&ONG to people with disabilities (PWD) in Singapore. Developing Revit skills and other architectural knowledge for future employment over the course of three months, we welcomed the guests to our office; taking a tour around our daily goings-on, insights to our industry and sharing our latest tech tools. We hope to see them again soon.



ONG&ONG
group

360 NEWS

Chief Editor
Ashvinkumar Kandiala
Managing Editor
Stanley Tan
Creative Director
Stanley Tan
Writer
Gary Jonas Lim
Editors
Emeric Lau
Gary Jonas Lim
Designers
Jacqueline Ong
Lim Pei Xuan
Photographer
Werty Ho
Printer
Yamagata (Malaysia) Sdn Bhd

When was the last time you used a ruler to draw lines for a project, or took a pencil, rubber and ruler along for meetings? Probably a while. It took 15 years for us to be rid of rulers: just one example of how **paradigms shift** owing to disruption. We have to be ready for change, or we will end up like that obsolete tool of measurement.



Or, we can be the disruptor.

Indeed, change is the only constant: we have quickly settled in to our new (and expanding) offices in Singapore, China, Vietnam, Malaysia and Thailand. Hot-desking and embracing the "Cloud" gives us a better perspective, to collaborate with one another differently.

This issue embraces the blossoming aspect of **Green Infrastructure** such as biophilia, which dramatically improves our wellbeing. Though urbanisation is the arbiter of societal progress, we must respect our environment, to mindfully embrace prefabrication, design for manufacturing & assembly, efficient computational designs, minimising carbon footprint, smart building, AI and more.

Speaking of fresh, our inaugural **BeyondX**, was an unprecedented success. Technology collaborators and industry partners came together to share and extrapolate new capabilities for the AEC industry. Mark the date, and join us for the BeyondX 2nd edition cum 9th July next year!

Then, instead of the usual Dinner and Dance for **ONG&ONG**, we had a retro-style **Experience 80s and Beyond**, with our overseas family joining in an epic Talentime and celebrations.

And in August, Ashvinkumar and I journeyed with seven brave individuals from the office to recce the Ong Teng Cheong Peak (4,743m) and Ong Siew May Peak (4,451m) along the border of Kazakhstan, Kyrgyzstan and China. In preparation for the 50th Anniversary of **ONG&ONG** in three years' time, it was a recce that allowed us to experience the gruelling weather conditions and persevere through as an homage to our founders' mountains.

I'd like to leave you with some fodder for **Thought Leadership**: Disruptive Innovation begins with a spark; dreams that seed ideas to the next generation, to form solutions that change our lives.

Vision

Experience Beyond

Purpose

To Improve the World in which We Live

Role

To Enhance the Well-being of Inhabitants through Excellence in Sustainable Design

BI-ANNUAL NEWSLETTER • OCT 2019 • MCI (P) 098/09/2019

360 NEWS is published by ONG&ONG Group Pte Ltd. All rights reserved. No part of this newsletter may be reproduced without the permission of ONG&ONG Pte Ltd. Opinions expressed in 360 NEWS are those of the writers and are not necessarily endorsed by ONG&ONG Group Pte Ltd. ONG&ONG Group Pte Ltd accepts no responsibility for unsolicited manuscripts, transparencies or other material.

Address all editorial and business correspondence to

ONG&ONG Group Pte Ltd
Corporate Communications Department
510 Thomson Road
#11-00 SLF Building
Singapore 298135

You are receiving this newsletter because you have been involved with ONG&ONG in the past. If you feel you are receiving this newsletter in error, please email corpcomms@ong-ong.com to unsubscribe from our mailing list.

In line with our corporate strategy of sustainable design, this newsletter is printed on PEFC certified paper.

ONG&ONG Group Pte Ltd
510 Thomson Road, #11-00
SLF Building, Singapore 298135
t +65 6258 8666
f +65 6259 8648

ONG&ONG Pte Ltd
510 Thomson Road, #11-00
SLF Building, Singapore 298135
t +65 6258 8666
f +65 6259 8648
www.ong-ong.com

ONG&ONG Co., Ltd
Unit 1003B, Level 10
Centre Point Building
106, Nguyen Van Troi Street
Ward 8, Phu Nhuan District
Ho Chi Minh City, Vietnam
t +84 28 6285 6178 / +84 28 6285 6179
f +84 28 6285 6169

**ONG&ONG 360
Consultancy Sdn Bhd**
Unit 1B-08-1, Blok 1B, Plaza Sentral,
Jalan Stesen Sentral 5,
50470 Kuala Lumpur, Malaysia
t +60 3 2272 2360
f +60 3 2272 3360

**ONG&ONG (Chengdu)
Consultants Co. Ltd**
Unit 802, 8F, Tower 1, Raffles City
Chengdu, No.3, Section 4, South
Renmin Road, Chengdu, 610041,
People's Republic of China
t +86 28 6510 0866
f +86 28 6510 0868

**ONG&ONG (Chengdu)
Consultants Co. Ltd - Shanghai**
3E, 3rd Floor, Block 19
322 Jiaozhou Road, Jing An District
Shanghai, 200040,
People's Republic of China
t +86 21 6381 5800
f +86 21 5273 5213

**ONG&ONG Designs
(India) Pvt Ltd**
Flat No 14, Ganga Maheshwar Apt,
Ram Mandir Road, Vile Parle,
East Mumbai 400057, India
t +91 022 4445 1148

ONG&ONG Design LLC
Residence 60, 4th Khoroo,
15th Khoroolol Peace Auv 8B,
Ulaanbaatar, Mongolia 13345
t +976 7575 6515
f +976 7575 6525

PT ONG and ONG
Grha Niaga Thamrin 1st Floor Unit A1
Jl. K.H. Mas Mansyur
Kebon Melati, Tanah Abang
Jakarta Pusat -10230 Indonesia
t +62 21 2139 2269
f +62 21 2139 2309

ONG&ONG Limited
No 45/5 Unit-A, Kabar Aye Pagoda
Road, 9th Ward Mayangone T/S,
Yangon, Myanmar
t +95 97822 25714

ONG&ONG Design Co., Ltd
75 / 39 Level 12A Richmond Office
Building, Sukhumvit Soi 26, Klongton,
Klongtoey, Bangkok 10110, Thailand
t +66 2259 8917-8

ONG&ONG, Inc.
Unit 6C-1, Trans-Phil House, 1177
Chino Roces Ave, Cor Bagtikan
St. Brgy. San Antonio, Makati City,
Philippines 1203
t: +632 479 1780

Project Innovations Pte Ltd
510 Thomson Road,
#09-00 SLF Building,
Singapore 298135
t +65 6255 3966
f +65 6255 5966
www.proj-innovations.com

Project X:ion Pte Ltd
510 Thomson Road,
#09-00 SLF Building,
Singapore 298135
t +65 6255 3966
f +65 6255 5966
www.proj-xion.com

**Rankine&Hill
(Singapore) Pte Ltd**
510 Thomson Road,
#09-00 SLF Building,
Singapore 298135
t +65 6278 9588
f +65 6273 5290 (M&E)
f +65 6339 9313 (C&S)
www.rankine-hill.com

**Rankine&Hill
(Vietnam) Co., Ltd**
Unit 1003B, Level 10, Centre Point
Building,106, Nguyen Van Troi Street,
Ward 8, Phu Nhuan District,
Ho Chi Minh City, Vietnam
t +84 28 6285 6178 / +84 28 6285 6179
f +84 28 6285 6169

Rankine&Hill Sdn Bhd
Unit 1B-08-1, Blok 1B, Plaza Sentral
Jalan Stesen Sentral 550470
Kuala Lumpur, Malaysia

**Rankine & Hill
(Myanmar) Limited**
No 45/5, Unit-J3, Kabar Aye Pagoda
Road, 9th Ward, Mayangone
T/S, Yangon, Myanmar
www.rankine-hill.com

SCA Design Pte Ltd
510 Thomson Road,
#09-00 SLF Building,
Singapore 298135
t +65 6253 4886
f +65 6255 4568
www.sca-design.com

**IMMORTAL
The Design Station Pte Ltd**
510 Thomson Road,
#09-00 SLF Building,
Singapore 298135
t +65 6227 9406
f +65 6259 8648
www.immortal.com.sg

SINGAPORE
CHINA
INDIA
INDONESIA
MALAYSIA
MONGOLIA
MYANMAR
PHILIPPINES
THAILAND
VIETNAM

ONGONG360
 ONG&ONG
 ONGONG_360
 ONGONG360
 ONG&ONG