

# 360 NEWS

Disruptive Innovators

Rethinking our World

Eminent Designs

Creative Visionaries

JANUARY 2024 • MCI (P) 027/07/2023

COLLABORATION

合作

KERJASAMA

ပူးပေါင်းဆောင်ရွက်ခြင်း

SỰ HỢP TÁC

ХАМТЫН АЖИЛЛАГАА

KOLABORASI

การทำงาน ร่วม กัน

EMBRACING  
A FUTURE  
REDEFINED

EXPERIENCE  
BEYOND.

## Steering the Group Forward

Big on recognising and encouraging progress, ONG&ONG recently promoted employees within the firm and hired new talent to join the Group. As growth is pivotal to the advancement of the company and its people, we take this opportunity to congratulate them. We anticipate these new talents to guide the Group forward as we strive to achieve new milestones that will better serve communities around the region.



**Dan Goh**  
Director  
Information Technology  
ONG&ONG  
Singapore



**Hendra Susanto**  
Director, Architecture  
ID24  
ONG&ONG  
Indonesia



**Suhana Binti Sulaiman Nasir**  
Associate Director,  
Architecture  
Studio 2  
ONG&ONG  
Malaysia



**D. Krisna Hardianto**  
Associate,  
Architecture  
Studio AR047A  
ONG&ONG  
Indonesia



**Chng Wei Xiang**  
Associate Director,  
M&E Engineering  
Studio 1  
ONG&ONG  
Singapore



**Gwendelyn Sng**  
Associate Director,  
Project Management  
Studio PM4  
Project Innovations  
Singapore



## ONG&ONG Singapore Named in BCI's Top Ten Architects 2023

ONG&ONG Singapore has been named as one of the BCI Top 10 Architects 2023 in Singapore! Celebrating Asia's burgeoning architecture, building, and design industries, the winners of the BCI Top 10 Architects are selected by both project value and sustainability efforts. Winning this award underlines our success and we are honoured to be cited alongside other industry greats. The annual BCI Asia Awards—now into its 17th year—recognises developers and architecture firms and seeks to encourage the creation of socially responsible architecture.

## ONG&ONG Vietnam Secures the Laos Consulate Project

ONG&ONG Vietnam, China State Construction Southeast Asia Co., and Indochina Holding Company recently signed a general contract framework agreement for the renovation of the Laos Consulate General in Ho Chi Minh City and the first-level office building Vision project at the Lao Consulate General. In April, Laos Vice President Pany Yathotou and her spouse, General Consul Phimpha Keomixay together with their entourage visited ONG&ONG Vietnam. During their visit, they were briefed about the status of the concept design for the proposed redevelopment of the Lao PDR Consulate in HCMC.



## ONG&ONG Wins Big at the Asia Pacific Property Awards held in Bangkok

No stranger to accolades, ONG&ONG added two more awards to its name at the Asia Pacific Property Awards that was held at the Marriott Marquis Queen's Park in Bangkok. Celebrating remarkable accomplishments in the property and real estate industry, Oakwood Suites Chongli won the Best New Hotel under the Construction & Design category while Opus Bay – an exclusive gated community of 300 private villas comprising three to six-bedroom units designed by ONG&ONG - was crowned a winner in these categories: Residential High-Rise Architectural Indonesia and Architectural Multiple Residence Indonesia.



Read more:



## Setia Eco Templer Wins the FIABCI in Miami

At the FIABCI World Prix d'Excellence Awards 2023 that took place in Miami, USA, Setia Eco Templer by S P Setia bagged the top accolade in the Master Plan category. Sited in Rawang, the masterplan for Setia Eco Templer was devised by ONG&ONG. The team devised a masterplan where over 30% of its land area is dedicated to Mother Nature. The development boasts a riverfront design where the site's series of existing water bodies, flora and fauna, and their habitats were preserved and enhanced. At the same awards ceremony, Setia V Residences in Penang also took the top spot under the Residential High-Rise category.

Read more:



## MOHH Innovation and Technology Excellence Gold Award for Jurong West 52 Street Nursing Home!

The Jurong West Street 52 Nursing Home has bagged the MOHH Innovation and Technology Excellence Gold Award (for nursing homes/ polyclinics/ senior care centres). For this project, both ONG&ONG and Rankine&Hill – members of the ONG&ONG Group – were involved, and the eight-storey development comprising a nursing home and a senior care centre, has been imagined as a home in a verdant garden. The MOHH Innovation & Technology Excellence Award recognises game-changing innovation and technology adopted by firms that significantly impacts and improves outcomes and delivery. The award also aims to encourage more firms to adopt innovative technology in project delivery.

## IMMORTAL Clinches Global Creative Colour Awards by Nippon Paint

We are proud to announce that IMMORTAL, our brand engagement and environmental wayfinding arm, has won the Creative Colour Awards for their dementia-friendly wayfinding project in Chong Pang City and Khatib Central. The award was for the "Public Spaces" category recognising the use of bold colour on the façade of residential blocks and super-sized wall graphics and ample pillar signage throughout both residential estates. The awards ceremony was held at Landmark 81 in Ho Chi Minh City, Vietnam.



Watch here:



## ONG&ONG's Joe Fu Recognised as an Architecture Luminary Under 40

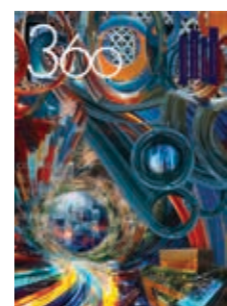
This year, the Singapore Business Review recognises 20 young and award-winning architecture professionals under 40 who have contributed to making Singapore one of the world's best-developed and most sustainable cities. This list is composed of architects from Singapore's top firms including ONG&ONG. Joe Fu, our Director of Architecture, was recognised for his remarkable achievements and listed among the esteemed ranks of Architecture Luminaries Under 40. Joe exemplifies our dedication to pushing the boundaries of architectural excellence and sustainable innovation.



Read more:



Through the use of Generative AI, we've generated three version of covers. Scan the QR code below to view them.



# Awards



As a holistic 360 solution consultancy excelling in infrastructure, commercial and high-density living projects, ONG&ONG's motto, We Understand Asia, allows us to create unique and inspiring spaces, while setting new benchmarks for the AEC industry as we improve the built environment for communities. Our projects have received accolades for transforming lives and evolving the urban ecosystem. Here are some of the awards we won in 2023.

emblems of excellence



**Setia Marina 2**  
Masterplanning  
FIABCI World Prix d'Excellence Awards, Residential (Low-Rise) Category, Gold

FIABCI Malaysia Property Award (MPA), Residential (Low-Rise) Category Winner

**Principal Lead:**  
Tan Kee Keat *Masterplanning*



**Oakwood Suites, Chongli**  
Interior Design  
Asia Pacific Property Awards, Construction & Design, China, Best New Hotel

Asia Pacific Property Awards, New Hotel Construction & Design, Asia Pacific, Nominee

**Principal Lead and Team Member:**  
Teo Boon Kiat and Amy Ling



**Artyzen Singapore**  
Architecture, Interior Design Management, Landscape  
Asia Pacific Property Awards 2023, 5-Star Award, Best Hotel Architecture

Asia Pacific Property Awards 2023, Best Hotel Architecture, Asia Pacific, Nominee

**Principal Lead and Team Members:**  
Steven Low, Tong Pey Haw and Cinco Bielza Gregorio *Architecture*

Lena Quek and Mabel Lim  
*Landscape*

Paul Lim and Teo Boon Kiat  
*Interior Design Management*



**The Jovell**  
Architecture, Landscape  
FIABCI Singapore Property Awards 2023, Residential Mid-Rise, Winner

**Principal Lead and Team Members:**  
Ashvinkumar Kantilal, Steven Low, Ong Hwee Jin and Yadana Kay Khine *Architecture*

Lena Quek *Landscape*



**Jurong West Street 52 Nursing Home**  
Architecture, M&E Engineering, C&S Engineering  
MOH Holdings Innovation & Technology Excellence Awards, Gold

**Principal Lead and Team Members:**  
Wendy Tan, Sivakumar Ratnasingam, Azman Embong, Oliver Reyes Imperial and Joseph Mejia Fermines *Architecture*

Rankine&Hill  
*M&E Engineering*

Rankine&Hill  
*C&S Engineering*



**CT FoodNEX**  
Architecture  
PropertyGuru Asia Property Awards Singapore, Best Industrial Development, Winner

**Principal Lead and Team Members:**  
Ashvinkumar Kantilal, Steven Low, Ong Hwee Jin and Yadana Kay Khine *Architecture*



**Social Media Office Expansion**  
Office Interior  
Good Design Awards 2023, Environment

**Principal Lead:**  
Elli Wang *Office Interior*



**Jadescape**  
Architecture, Interior Design, M&E Engineering  
Good Design Awards 2023, Environment

**Principal Lead and Team Members:**  
Ashvinkumar Kantilal and Lai Tien Yong *Architecture*

Teo Boon Kiat, Amy Ling and Richardo Esguerra Ugay  
*Interior Design*

Rankine&Hill  
*M&E Engineering*



**Sloane Residence**  
Architecture, Landscape  
Good Design Awards 2023, Environment

**Principal Lead and Team Members:**  
Ashvinkumar Kantilal and Lai Tien Yong *Architecture*

Lena Quek *Landscape*



**ONG&ONG**  
BCI Asia Awards, Top 10 Architects, Singapore



**Dementia-Friendly Wayfinding Project**  
Brand Engagement  
Nippon Paint Creative Colours Awards, Public Spaces

**Principal Lead and Team Members:**  
Stanley Tan and Gary Soh  
*Brand Engagement*



**North Hong Kong Columbarium**  
Architecture  
World Architecture Festival, Future Civic Projects Category, Finalist

**Principal Lead:**  
Tan Kee Keat *Architecture*



**Jadescape**  
Architecture, Interior Design, M&E Engineering  
BCA Universal Design Index, Very Good Universal Design Provisions

**Principal Lead and Team Members:**  
Ashvinkumar Kantilal and Lai Tien Yong *Architecture*

Teo Boon Kiat, Amy Ling and Richardo Esguerra Ugay  
*Interior Design*

Rankine&Hill  
*M&E Engineering*



## CHARGE+

Singapore wants to decarbonise its transport sector, as part of its goal of reaching net-zero emissions as soon as viable in the second half of the century. As such, Charge+, the green mobility unit of Sunseap Group and brainchild of Ong Tze Boon, Chairman of ONG&ONG Group, was developed. It aims to catalyse the proliferation of electric mobility in the region, starting with the implementation of 10,000 charging points across Singapore by 2030.

Recently, Charge+ achieved a milestone when it secured an undisclosed Series A funding round led by TRIVE Venture Capital to accelerate the expansion of its EV charging infrastructure in Singapore and throughout Southeast Asia. The funds raised will support two key priorities: to fulfil an ongoing tender contract awarded by the Singapore Land Transport Authority (LTA) to provide approximately 4,000 EV charging points in the carparks of the Housing & Development Board public housing, and to implement a 5,000km EV charging highway across five Southeast Asian countries. It also launched its new 120kW Turbo DC charger at Skudai R&R Southbound. This marks the first of many charging stations that will serve the North-South Highway of Malaysia, a key node in Charge+'s 5,000km EV charging highway through Southeast Asia. It aims to deploy 30,000 EV charging points globally by 2030.



## SPORTS SPONSORSHIP

Initiated by Paul R. Lim, CEO of Project Innovations, ONG&ONG Group had signed up as supporting partners for a three-match series between the Hockeyroos and China in Bunbury and Perth. The Hockeyroos v China Test Series, presented by JDH, that took place from 23 to 26 March 2023 received significant support with JDH and ONG&ONG Group signed on as partners for the series and sealed Hockeyroos' status as one of Australia's most successful national women's hockey teams. The partnership highlights the lure of supporting Australia's premier hockey teams and events, with this series set to receive widespread international exposure. "We are extremely happy to support the test series between Australia and China especially with ONG&ONG's growing presence in both countries," Paul R. Lim said.



## ONG FOUNDATION

The ONG Foundation was established in 2012, in memory of Singapore's late president Ong Teng Cheong and his wife, Ong Siew May, to continue President Ong's commitment to philanthropy. The foundation is dedicated to supporting charitable initiatives in the areas of Healthcare, Education, and the Arts.



## GOFLOW

Access to clean water is a necessity - that some 1.1 billion people worldwide lack access to water is a scary statistic indeed. Research states that by 2025, two-thirds of the world's population may face water shortages. Powered by the pedal, GoFlow transforms freshwater into potable water. A lightweight device that can be easily deployed with a bicycle, GoFlow requires no electricity and can produce up to 4,000 litres of fresh water a day.

In Cambodia, together with Water and Healthcare (WAH) Foundation, GoFlow is slowly but surely making a difference. With a mission to improve lives and conditions of rural communities, WAH started working in Kampong Chhnang and Kampong Preah to address the lack of access to clean drinking water; with eight units of GoFlow given to the residents thus far.



## KNOWLEDGE SHARING

Ong Tze Boon, the Executive Chairman of ONG&ONG Group, delivered an inspiring speech at the Speaker Summit & Networking Event organised by Entrepreneurs Organisation (EO) in Vietnam. He shared his journey of scaling a family company to new heights while embracing adventure. Emphasising a holistic approach to business and leveraging innovation, his valuable insights contributed to the event's success, leaving attendees inspired to discover greater purpose. The event, held on May 12th, was an unforgettable experience that left a lasting impression on all those who attended. EO is a global business network of 14,000+ business owners in 198 chapters across 61 countries and the EO Vietnam is one of the fastest-growing chapters.

# COMMUNITY EMPOWERMENT

"We make a living by what we get, but we make a life by what we give."  
Winston Churchill

It's easy to get lost in the day-to-day operations of running a business. But it's important to remember that businesses don't exist in a vacuum - they're part of the communities where they operate. As such, community empowerment is the heartbeat of sustainable development, representing a reciprocal relationship between individuals, organisations, and the communities they serve. As entities existing and operating within a specific community, it is not only a responsibility but also an opportunity to give back.

Empowering a community involves more than financial donations; it encompasses fostering education, supporting local businesses, and creating avenues for skills development. Community empowerment, which often involves a collaborative approach, strengthens the fabric of society, creating a harmonious environment where both entities thrive. In essence, giving back to the community is an investment in shared prosperity. Operating in seven countries across Asia, the ONG&ONG Group actively gives back by engaging in philanthropic acts through the ONG Foundation.



## ONG SIEW MAY PROFESSORSHIP

In 2000, the Ong Siew May Visiting Professorship was created. The Visiting Professorship has enabled selected industry practitioners to share their knowledge and inspire the next generation of built environment designers at NUS. Since its inception, multiple professors have taken part in this programme that has benefitted many students yearning to learn. For the 2022-23 academic year, Professor Dr. Hitoshi Abe was appointed and during his tenure at NUS, the WORKHOUSE @ Singapore studio was asked to explore what the phenomenon of co-work/living after years of the pandemic means for architecture, and how it can serve as a catalyst for a series of mutually beneficial, thoughtfully coordinated programmatic relationships.

Hitoshi Abe is a former Chair in the Department of Architecture and Urban Design at UCLA and the Director of the UCLA Paul I. and Hisako Terasaki Center for Japanese Studies. In 1992, Dr. Abe established Atelier Hitoshi Abe, since then he has maintained an active international design practice based in Sendai, Japan. Professor Abe was the chair of UCLA Architecture and Urban Design from 2007-2017, is currently the director of Paul I. and Hisako Terasaki Center for Japanese Studies, and holds the Terasaki Chair for contemporary Japanese study.

THE  
MANIFESTATION  
OF A

# DREAM



A FEW YEARS AGO, THE IDEA TO BE AN INDUSTRY DISRUPTOR BY HARNESSING THE POWER OF SMART TECHNOLOGY TOOK ROOT IN THE MIND OF ONG TZE BOON, THE GROUP EXECUTIVE CHAIRMAN OF ONG&ONG. THAT SEED OF THOUGHT HAS NOW MANIFESTED ITSELF INTO REALITY WITH THE BEYOND<sup>X</sup> INITIATIVE.

## CHANGE

the Catalyst for Progress

At the core of our daily existence are buildings. We traverse between these structures, whether they serve as our workplaces, residences, or leisure spaces. In recent times, profound global shifts, rapid urbanisation, climate change, resource limitations, and labour shortages have significantly altered our interactions with buildings and their multifaceted roles.

While the focus remains on ensuring the longevity and relevance of buildings, it is imperative to address their impact on the environment and climate. Presently, buildings contribute to 40 percent of the world's energy consumption and 33 percent of greenhouse gas emissions. The buildings of the future necessitate a paradigm shift, emphasising sustainability, energy efficiency, and intelligent design. Fortunately, the advent of digitalisation presents opportunities to achieve these objectives.

Today's buildings aren't just smart—they're alive. Smart lighting systems can turn lights on and off at optimal times while intelligent heating, ventilating, and air conditioning (HVAC) systems make micro-adjustments throughout the day to maximise energy efficiency. Processes that long measured temperature now also detect humidity and CO<sub>2</sub>, ensuring maximum occupant comfort and minimal environmental impact. Stored biometric credentials prevent security breaches and increases the speed with which people can flow through buildings.

With all those benefits, it's abundantly clear why everyone wants their buildings to be smart. The global smart building market size was valued at USD 80.60 billion in 2022 and is projected to grow from USD 96.96 billion in 2023 to USD 408.21 billion by 2030, exhibiting a compound annual growth rate of 22.8% during the forecast period.

## CONNECTING

People with the Digital Realm

We are on the brink of a new age for building construction.

No longer is it enough for offices to be a space for work; smart buildings are the future, representing a change in the way we conceive, construct, and interact with built environments. The integration of advanced technologies, connectivity, and intelligent systems positions smart buildings at the forefront of urban development and sustainability.

Smart buildings are a smarter choice due to three overarching ways they deliver next-level benefits: savings, security, and sustainability. This is why many industries are transitioning existing buildings into smarter, high-performance buildings using real-time insights via smart technology.

Smart buildings make better financial sense. The technology that powers smart buildings leverages Artificial Intelligence and Machine Learning to improve and optimise the use of resources. For instance, AI and ML can help reduce energy consumption for HVAC and electrical systems. It does this by aligning building tenant preferences and schedules to temperature, lighting, and other controls.

Building maintenance costs can also be minimised via intelligent, proactive, predictive maintenance approaches. Sensor data and software-based algorithms help monitor the performance of building systems and identify impending failures at the lowest cost of repair and before they can escalate into major expenses or events.

Smart technology is paving the way to a greener future. Smart buildings help reduce emissions by improving the use of resources such as electricity and water. Technology and advanced analytics can transform existing buildings into smarter ones and equip new buildings with more intelligent, greener structures that align with sustainability goals.

## COLLABORATION

of Smart Technologies

"Smart technologies are defined by their interconnectedness," states a recent ACEEE report on smart building markets. Intelligent buildings have been a concept for decades and sustainability thinkers have been advocating them for years, so why the hold up? It stems from the fact that every actor in the smart buildings' universe is an island.

Now, through collaboration, smart building players are strengthening their open innovation capabilities through investments and partnerships with startups, incubators and accelerators that support their development.

Corporates are recognising the need to increase their agility and speed in developing smart connected products and services by leveraging software, analytics, and the Internet of Things in order to maintain competitive advantage, gain access to emerging or disruptive technologies, and accelerate digital transformation. Meanwhile, startups need access to key industry players to better understand the unique challenges and opportunities of the smart buildings sector.

In Singapore, the race to be an industry leader is very much on and the ONG&ONG Group is once again gaining the reputation of being a disruptor. In collaboration with Enterprise Singapore (ESG), ONG&ONG is establishing an incubator lab that will attract digital disruptors to work together.

**K**nown as BeyondX, it will be a space that empowers innovation and opportunities to create a whole new ecosystem. The building will house like-minded individuals, businesses, and start-ups, all gathering, sharing, and learning of and from one another.

Encompassing partners and industry players who possess and develop proprietary technologies, BeyondX will enable the mapping and planning of an intelligent ecosystem. The building spans approximately 430,000 sq. ft. and weaves a narrative as an integrated technology aggregator.

The range of possible applications includes the optimisation of building and plant operation, sustainability solutions, and innovative workplace design.

Established players in building automation, facilities management, and real estate services can collaborate with startup engines and incubation centres worldwide to leverage innovation. As partners, they can scale and apply these fresh offerings for the benefit of their clients.

"We see it as our task to identify new technologies and innovative solutions for the real estate sector. This initiative gives us an early insight into technologies and applications that have immense potential for increasing efficiency in the real estate of our customers, giving them real added value," said Ong Tze Boon, Group Executive Chairman of ONG&ONG Group.

Stay tuned for more updates in the next few months!

# Synergistic Specialisation –

Individually Skilled,  
Collectively Dynamic

User experience is at the centre of any aspect of building design. Design encapsulates and augments it. Weaving all this together harmoniously, ONG&ONG offices around Asia are able to provide the full 360 experience, through a team of handpicked specialists.

Singapore Indonesia Malaysia Mongolia Myanmar Thailand Vietnam

# 360 Solution



## Workplace Interior

- Building Studies
- Workplace Studies
- Space Planning
- Interior Design
- Project Management
- Sustainability
- Turn Key Solutions

The perfect corporate interior goes beyond simply creating functional workspace. Although aesthetic quality and style are a must, the environment must be synergistic and inspirational. After all, productivity is the name of the game.

At SCA Design, we go beyond traditional interior design, altering the notion of what a working environment should encompass. Combining in-depth building and workplace studies we determine the ideal parameters for project management. In addition, with input from clientele and the end-user, space planning is used in tandem with flawless interior design, resulting in turn key work spaces that exemplify what the modern office should be.

## Engineering

- Mechanical
- Electrical
- Civil
- Structural
- Fire Safety
- Environmental

Beneath the veneers of colours, curved lines and textures of all dazzling designs are the hidden machinery and mechanisms that make everything possible. Inventive engineering becomes the basis through which creativity can be transformed from imagination and turned into living, breathing reality.

With decades of experience in the industry, Rankine&Hill consultants have collaborated on some of Singapore's most iconic designs. From Mechanical & Electrical to Civil & Structural, as well as Fire Safety and Environmental solutions, we continue to deliver a full-range of comprehensive engineering solutions that bring projects to fruition.

## Project Management

- Project Management
- Project Development
- Construction Management
- Cost Management
- Place Management

Ensuring projects are well organised and cohesively executed are the fundamentals of our business. But it's more than just putting the right people in touch or assembling the ideal team. Our goal is to connect the dots and tie up the loose ends to make sure projects are as easy and cost-effective as possible.

The process is a practical one. First, the objectives and parameters of a given project are properly ascertained. Following which, development is carefully planned and mapped, all in an effort to ensure complete alignment and efficiency throughout the construction phase. For us, success means a stress-free experience for our clients.

## Project Solutions

- Construction
- Design & Build
- Turn Key Solutions
- Contract Works

Our newest Specialist Studio is ideal for overseeing small to medium-scale projects. Providing Design & Build expertise across a range of industries and sectors, Project X-ion specialises in guiding turnkey projects from concept to completion.

Our clients will enjoy the convenience of a one-stop shop solution, where the knowledge of a multi-disciplinary property and construction consultancy, with extensive local and international experience, can provide a diverse array of services including project management, cost management & quantity surveying, development management and contract work.

## Brand Engagement

- Market Insight
- Brand Audit
- Brand Strategy
- Brand Expression
- Brand Management
- Environmental Branding
- Digital Branding Solutions

Brand Engagement is an analytical process, but also one that requires much imagination. It is about crafting experiences that foster relationships between brands and consumers.

With over 27 years of experience and a client list brimming with household names, IMMORTAL is renowned for its branding programmes that have helped many clients grow their businesses. Offering a comprehensive suite of services including Market Insight, Brand Audits, Strategy, Expression, and Management, IMMORTAL is committed to helping any brand create an authentic and enduring identity.

## Environmental Wayfinding

- Planning and Analysis
- Wayfinding Strategy
- Signage System and Design
- Environmental Graphics

IMMORTAL delivers effective wayfinding, at every point of a journey. It is a system of signs and symbols to enable easy navigation. No matter the complexity, the primary objective is to make every space more user-friendly.

Wayfinding has the capacity to optimise and enhance the built environment, improving circulation, connectivity and use of space.

## Experience Design

- User Experience Strategy
- Service Design Consulting
- Design Thinking
- Ethnographic Research

Experience Design is about altering human experiences through the process of Design Thinking, where we imagine and conceive in terms of utility. Human experiences are in constant flux, where improvement, progress and advancement unfold and develop over time – ultimately leaving us better positioned than before.

At ONG&ONG, our award-winning Experience Design team finds ways to elevate and improve an experience. Whether it's a minor tweak or something completely reimagined, all the projects we work on have one thing in common: making the end-user experience better.

## Landscape

- Master Planning
- Space Planning
- Blue & Green Solutions
- Sustainability
- Playground Design

The modern built environment is increasingly characterised by the integration of nature. Regardless of typology and scale, projects today make it a point to include greenery where possible.

At ONG&ONG, our track record of award-winning projects underscores the importance we place on landscape design. From biophilic environments and naturalistic designs, to the creation of sustainable microclimates, our landscape team endeavours to find the optimum levels of greenery to benefit and enhance the built environment.

## Lighting

- Architectural Lighting
- Equipment Cost Control
- Operational Cost Control
- Lux Level Calculations
- Lighting Controls
- Lighting Audits

Lighting design is crucial, yet too often overlooked. Lighting can highlight and accentuate any space. It can alter the ambience or mood of a given setting, bringing life, warmth and more to any environment. Lighting has the capacity to transform a solid project into a superb one, where just the right mix of shadow, light and colour can easily augment the end-user experience.

Bright or low-key, fluorescent or neon, simple or intricate, we at ONG&ONG fully appreciate how crucial a project's lighting design can be.

## Interior Design

- Advisory & Consultancy
- Space Planning
- Test Fit
- Feasibility Study
- Master Design Guidebook
- Turn Key Solutions

Residential or commercial, public or private, institutional or infrastructural, interior design is crucial no matter the project. From forming the heart of a home to setting the tone for a corporate or professional space, the potential of a space is realised through interior design.

Be it functionality or comfort, on luxury or utility, ultimately the manner in which we conceive a space influences how it will be utilised. At ONG&ONG our interior design experience runs the gamut of typologies and scales, with award-winning projects the world over as proof of our ability to truly define any space.

## Masterplanning

- Vision & Strategies
- Land Using Planning
- Connectivity
- Urban Infrastructure
- Environmental Sustainability Design
- Landscape

Cities rely on experienced planners when creating infrastructure master plans. The process of conceptualisation demands imagination and a progressive mindset.

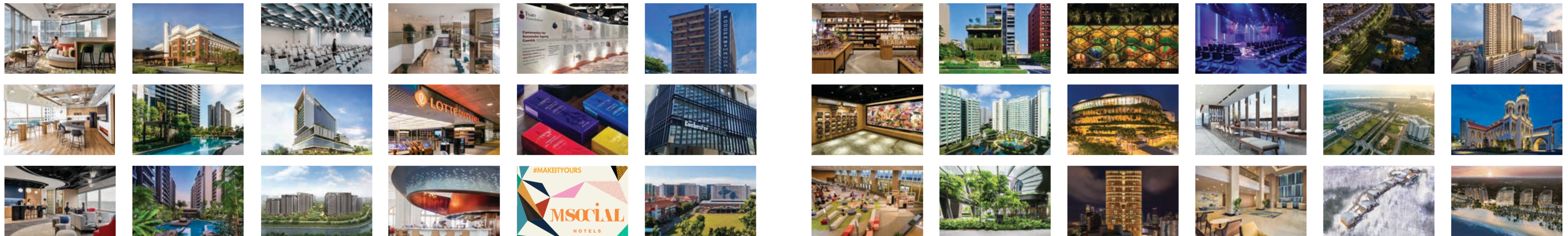
It comprises a plethora of considerations, including the accessibility to civic amenities, drainage systems and encouraging communities. A well-designed city is future proof, catering to the evolving needs of its inhabitants for decades.

## Architecture

- Master Planning
- Architecture
- Ideate and Create
- Conceptualisation & Analysis
- Research & Development
- Space Planning

For nearly half a century, ONG&ONG has been synonymous with architectural excellence. Regardless of scale or typology, our extensive experience and repertoire of knowledge have empowered the firm to deliver countless projects of the highest calibre.

Today, the firm operates in several countries in Asia, as we build on a tradition of excellence, working to grow our reputation for dependability and innovation in the region and beyond - delivering a comprehensive range of services that includes individualised expertise in Master Planning, Brand Engagement, Experience Design, Interiors, Landscape and Lighting.



www.sca-design.com



www.rankine-hill.com



www.proj-innovations.com



www.proj-xion.com



www.immortal.com.sg



oxd.ong-ong.com



www.ong-ong.com

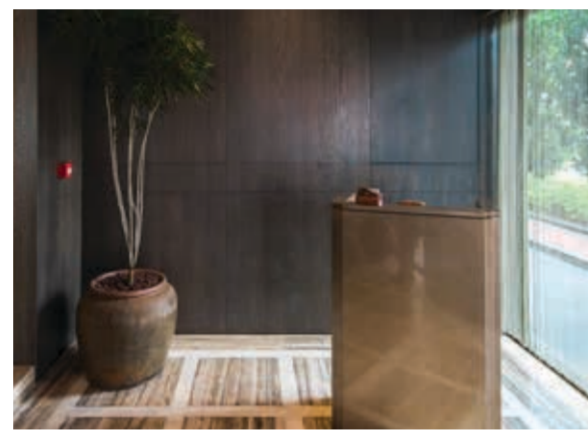
# Specialists

# Fiz

With monastic simplicity, this restaurant's interior design amplifies the connections between culture, history, and dining experience. **Singapore**

**Principal Leads and Team Members:**  
Akira Kita, Elita Ong Eveline Husandy  
Architecture and Interior Design

# Fiz

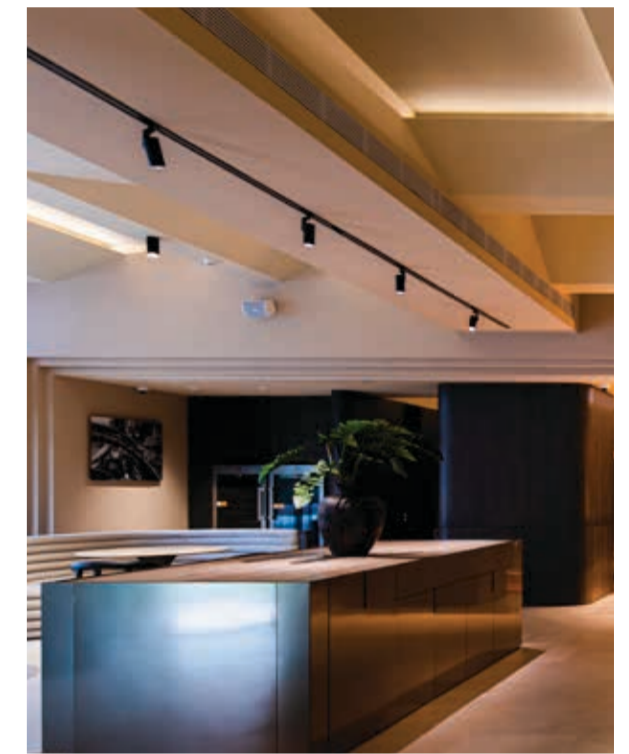


Located in the lively F&B district of Tanjong Pagar, Fiz is a culinary beacon, embodying the rich flavours and architectural legacy of Southeast Asia. Chef-owner Hafizzul Hashim takes diners on a gastronomic journey across Southeast Asia, from the ancient steps of Angkor Wat to the lush highland valleys of Sarawak. But it is not just the food that commands attention, the interior of the restaurant itself harmonises motifs from around Southeast Asia by using earthy materials such as stone, wood, and terracotta.



ONG&ONG was engaged for their expertise and what the team delivered harmonises iconic temple motifs, monastic simplicity, and elements of earth architecture, all punctuated with retro-futuristic nuances. The design elements form a part of Fiz's narrative, offering an immersive dining journey that intertwines tradition and modernity.

In this fusion of heritage, the interior is dominated by earthy textures and tones. Honest and natural materials like stone, wood, and terracotta as well as

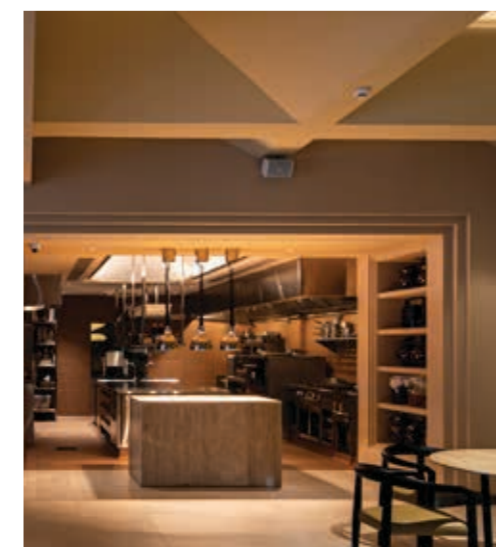
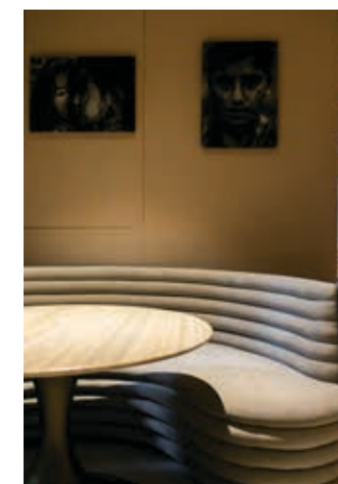


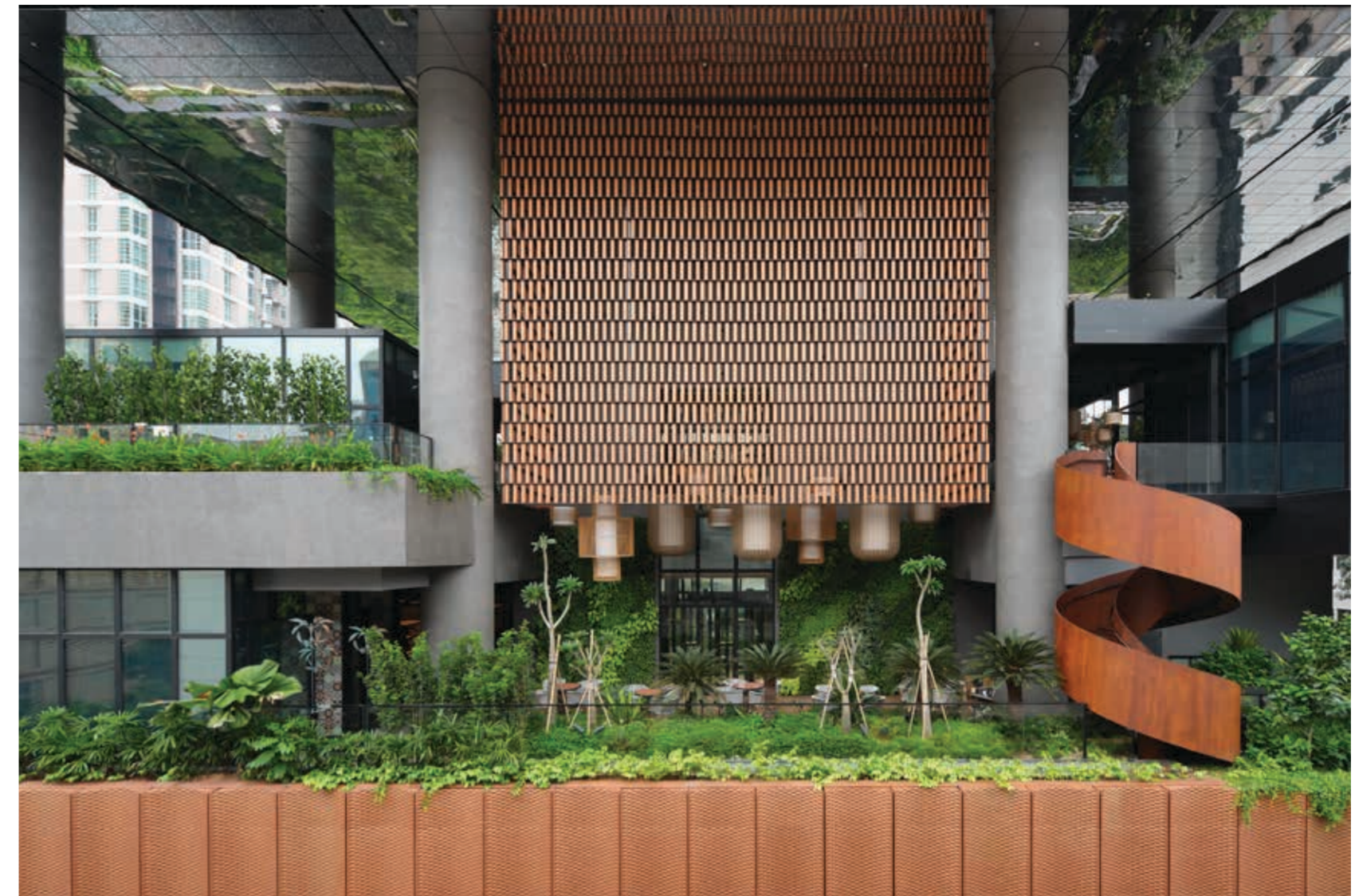
aged bronze and brass accents are incorporated, infusing the space with a subtle opulence and a nod to the ornate detailing of Southeast Asian temples.

Each dining table is made of antique-finished silver travertine and diners can gaze upon the natural lines and variations within the stone, which resembles the undulating terrain of the earth. Looking up, diners will find a ceiling that recalls the structures of temples, where angled coves and vaults are fashioned into modern, geometric interpretations. The diner can thus perceive the table as the earth and the skies as the divine.

The main entrance door is a statement piece, its design an abstract echo of the intricate textures and motifs found in temples. Crafted as a grand, heavy, single-leaf pivot door, it offers diners a commanding and majestic welcome. Once inside and at the heart of Fiz is the main dining area, anchored by a monolith which functions as a central service station. Across the space, circular booths reinforce a circumambulating motion. Seats are upholstered in natural tactile fabrics with curves and levels that reflect the contours of Southeast Asia's terraced landscapes on which rice is cultivated.

Dining experiences can certainly be more than about feeding oneself. They can be about honouring culture and history, where identity is embellished, and where patrons leave with their appetites satiated and their minds enlightened. Fiz ticks all these boxes.





Artyzen

ONG&ONG Group

## Artyzen Hotel

Inspired by Singapore's culture, colours, and flavours, Artyzen Singapore is a fresh interpretation of luxury.

Singapore

### 360 - Principal Leads and Team Members:

Steven Low and Tong Pey Haw *Architecture*  
Lena Quek and Mabel Lim *Landscape*  
Paul Lim and Teo Boon Kiat *Interior Design management*

Conceptualised as a 5-star hotel offering a culturally nuanced guest experience, Artyzen Hotel harks back to its former use as a bungalow. This iconic heritage landmark was once a sprawling tropical-garden mansion named "Marie Villa" and owned by the great-grandson of Singapore's well-known philanthropist, the late Mr Tan Tock Seng.

For this project, Artyzen Hospitality Group handpicked ONG&ONG and Nic Graham as they share the Group's passion to reflect Singapore's unique environment and culture, and to reinvent key elements from rich Peranakan heritage for the building, its interior design, and their service philosophy. Located in the heart of the city, Artyzen Singapore is just a stone's throw from the bustling Orchard Road and minutes away from Singapore Botanic Gardens, the nation's first UNESCO Heritage Site.





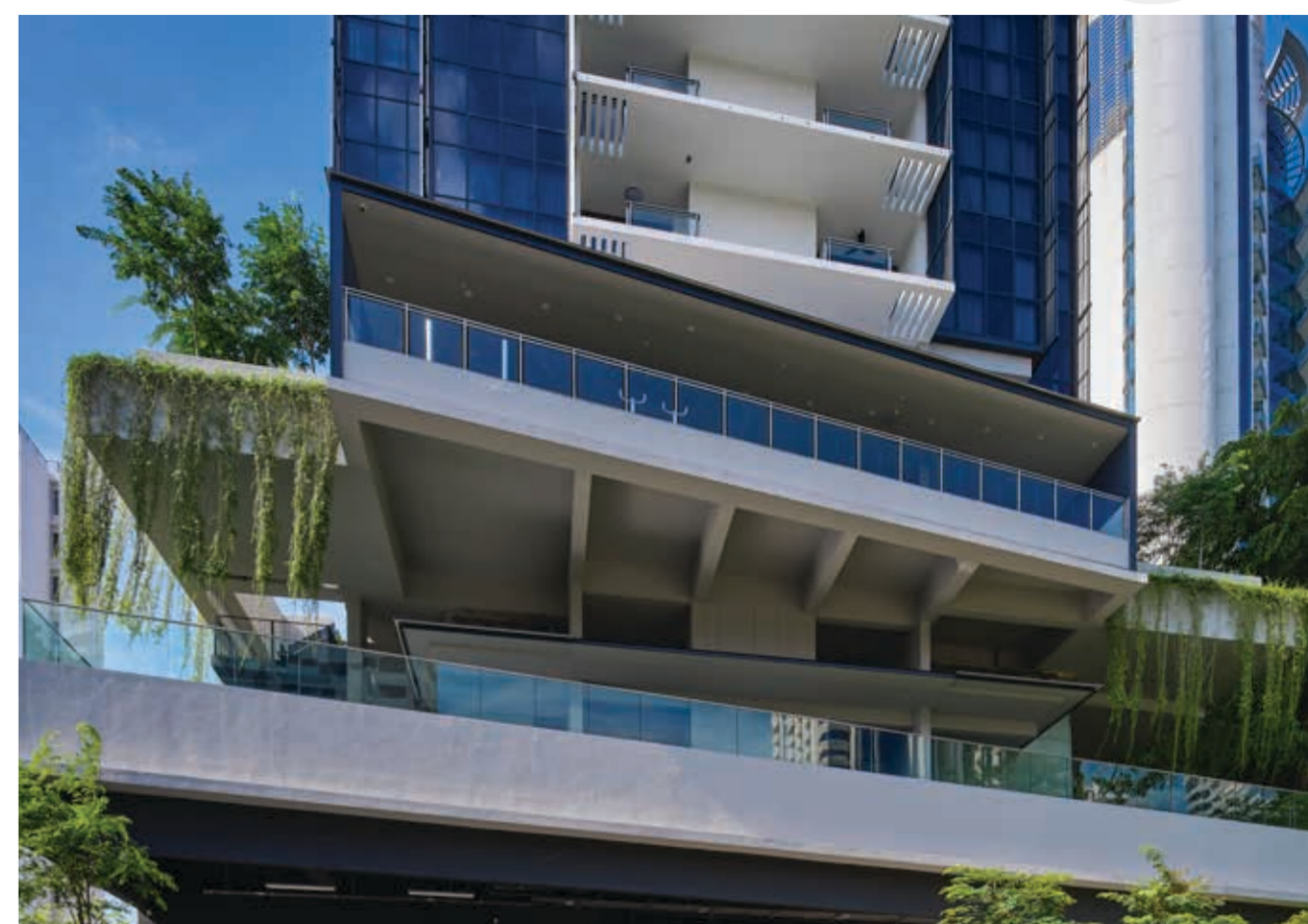
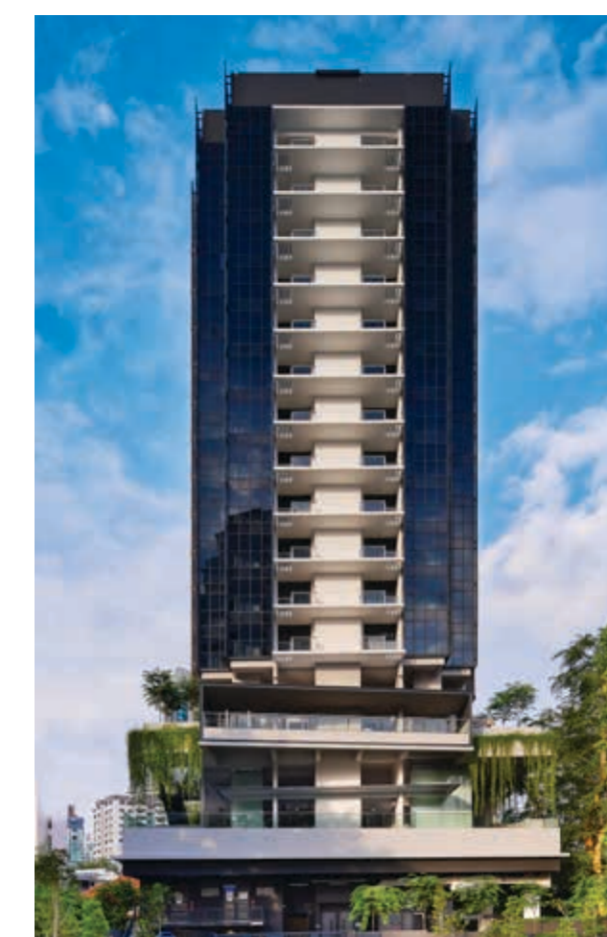
Embracing its unique past, Artyzen Hotel infuses British and Peranakan flavour with greenery, replicating the feel of an expansive villa across its 20 storeys. A myriad of design elements echoes old-world charm – double volume spaces, familiar colonial archways and verandas and the exterior's unique cladding motif. Through its architecture, the team wanted to create a hotel experience which is deeply ingrained in tropical elements, the interconnecting spaces from indoor to outdoor, the in-between spaces in form of verandas, balconies, terraces, all reflecting intimacy with tropical lushness.

This bolsters the garden-like feel and evokes a sense of nostalgia. Lush green foliage accentuates balconies on different floors, further emphasising the building's spatial lightness. An outdoor spiral staircase connecting the fourth-floor restaurant to the Wellness & Workout area on the fifth floor creates an enchanting guest experience.

The green theme extends to the hotel's crowning glory, the Roof Garden that also includes a 25m infinity pool with a transparent base section, and outdoor deck with a sunken lounge. At the top floor, one will be absorbed by the panoramic view of the lush Nassim Hill on one side and the urban skyline of Singapore's CBD on the other.

The hotel is designed with building fenestration orientated to avoid the East and West direction, minimising heat and solar glare. A double skin in the building is designed to provide heat buffer between the external façade and the actual wall enclosure of the guest rooms. In addition, vertical perforated screens are designed at balconies to provide shade, protecting the interior space from heat and glare from the sun.

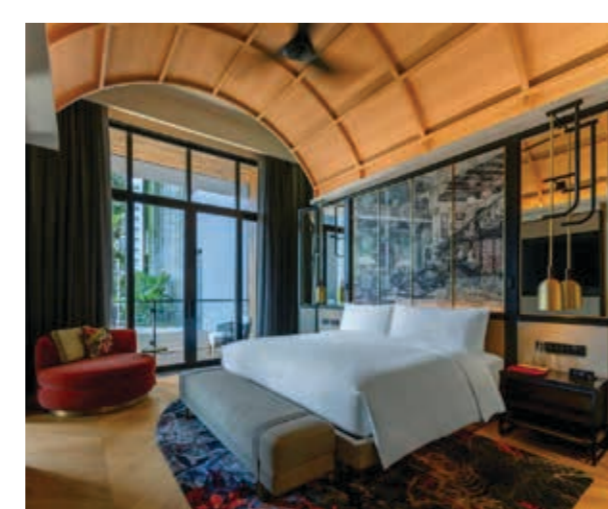
Artyzen



ONG&ONG Singapore  
**120 Grange**

All units at 120 Grange are conceptualised to combine modern living with nature.  
 Singapore

**Principal Lead:**  
 Lai Tien Yong Architecture



Surrounded by embassies and luxurious homes, 120 Grange is an exclusive address near the heart of the Orchard Road shopping and entertainment district. Offering the convenience of contemporary city living, the development allows easy access to numerous amenities and transportation options.

Within the constraints of a compact site, 120 Grange takes advantage of innovative site-planning techniques. A series of sky terraces contain communal green landscape decks that house the main swimming pool, recreational, and dining facilities. Conceived as an elevated green plateau with a singular residential tower sitting elegantly above, 120 Grange features a series of refined habitats ideal for the urbanite.

The tower block is connected and divided by a spine-like axial circulation space. It is lined with a frame of off-form concrete gable walls finished in a patina of raw textures. A clean glass façade spans the living spaces, layered with a lattice of window mullions and glazing patterns. This is balanced by protruding balconies to create a functional yet highly expressive elevation. The tower is organised into two distinct vertical stacks containing a range of unit types.

Residential units are airy and benefit from ample natural light, each reflecting modernity, functionality, and contemporary taste. The units are laid out to maximise spaciousness, flexibility, as well as views towards the cityscape and expansive greens. From larger two-bedroom residences intended for small families, to studio suites geared toward those seeking live-work-play living spaces, 120 Grange caters for diverse needs and requirements.

120 Grange connects the living environment with the city's irrepresible heartbeat – merging the threshold between domestic and urban spaces. It is the urban living experience reimagined, where homes surrounded by picturesque gardens and waterscapes are bolstered by a wide array of recreational facilities.





# Oakwood Suites Chongli

Connecting the estate with its surroundings, the ONG&ONG interior design team crafted a narrative that makes guests at Oakwood Suites Chongli feel connected to the outdoors. [Singapore](#)

**Principal Leads and Team Members:**  
Teo Boon Kiat and Amy Ling Interior



泰礼奥克伍德雅居酒店公寓是一家位于中国风景秀丽的崇礼区的豪华服务式公寓，提供短期和长期住宿的无与伦比的生活体验。其室内设计反映了精致、舒适和审美吸引力。

配色方案的灵感源自大自然，以朴实的色调、中性色调和充满活力的色调体现了崇礼的美丽。木材和石材的触感营造出温馨的氛围，大窗户充分利用自然光，提供壮丽的山脉和绿色景观。

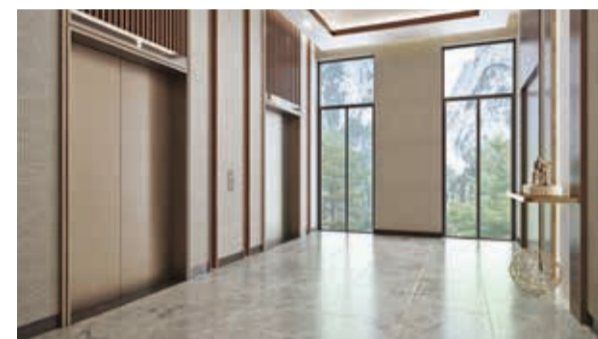
客人可以一览无余地欣赏茂盛绿意的风景和优美的山脉景色。ONG&ONG 室内设计团队将现代设计与自然环境完美融合。

对细节的关注延伸至公共区域，大堂配有别致的家具、优雅的灯光和精致的装饰。健身中心和水疗中心营造出平静而充满活力的放松环境。

在主大堂，纹理墙壁、胡桃木、当地花岗岩和山景营造出宁静的森林体验。茶吧区也采用类似的处理方式，增强了山景。自然的色调和材料，以及极简主义的方法，在庆祝四个季节的同时提供舒适感。

总体而言，泰礼奥克伍德雅居酒店公寓将现代美学与舒适感融为一体，在视觉上吸引人的大堂中体现了崇礼的精髓。

进入私人空间，宾客会发现客房兼具功能性和现代魅力。宽敞、光线充足的起居区散发着开放和宁静的气息。家具和装饰营造出优雅的氛围。



Oakwood Suites Chongli is a luxurious serviced apartment located in the picturesque Chongli district of China. Nestled amidst stunning mountains and serene landscapes, this exquisite property offers an unparalleled living experience for both short and long-term stays. The interior design of Oakwood Suites Chongli is a perfect reflection of sophistication, comfort, and aesthetic appeal.



Oakwood Suites Chongli offers guests unobstructed views of rolling greens and scenic mountains. The ONG&ONG interior design team crafted a narrative that makes guests feel connected to the outdoors from the moment they enter the property. The contemporary design seamlessly blends with the natural surroundings of the district.



At the Main Lobby area, the use of textured paint on the walls with walnut timber planking and local granite accents, coupled with the mountain views, give guests the experience of entering a tranquil forest. A little further in, the Tea Bar area sports a similar treatment of walnut and granite to accentuate the stunning mountainous view and lush greenery. The effect leaves guests feeling relaxed and rejuvenated. Throughout the space, the use of natural tones and materials, and a minimalist approach truly imparts the beauty of the four seasons while enabling guests to bask in comfort.



Stepping into the elevator and entering the more private spaces, guests will discover that their rooms have a thoughtfully designed interior that combines functionality with contemporary appeal. The living areas are spacious and well-lit, creating an atmosphere of openness and serenity. Furniture and decor have been carefully curated to provide a modern and elegant ambience, with plush seating, tasteful artwork, and stylish accessories.

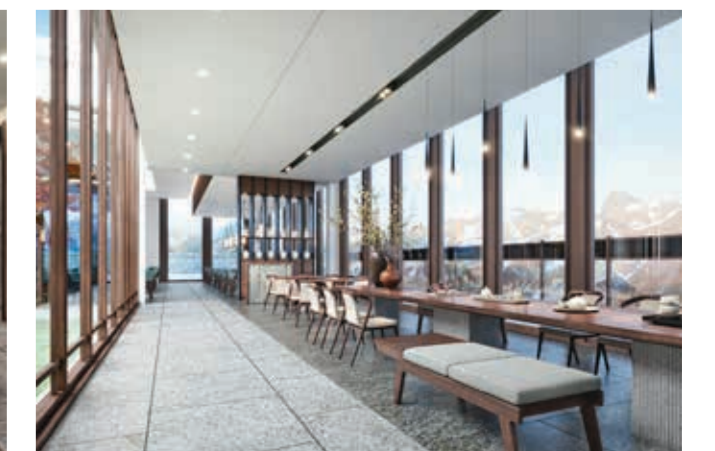
The colour scheme of the interiors is inspired by nature, with earthy tones, soothing neutrals, and pops of vibrant colours that reflect the beauty of the Chongli region. The designers have incorporated wood and stone touches, creating a warm and inviting atmosphere. The use of large windows allows abundant natural light to fill the spaces, offering breathtaking views of the mountains and lush greenery.

The attention to detail in the interior design extends to the common areas of the property as well. The lobby area is designed to impress, with its chic furnishings, elegant lighting fixtures, and tasteful decor elements. The fitness centre and spa evoke a calm and invigorating environment, allowing guests to relax and unwind.

Overall, Oakwood Suites Chongli embodies a perfect fusion of contemporary aesthetics and comfort. The attention to detail, use of natural materials, and sensitivity to the surrounding natural beauty create a space that is visually inviting, making it a true haven that captures the essence of Chongli.



# Oakwood Suites





ONG&ONG Group

## HDB Woodlands Glade

Ticking all the right boxes for homeowners, Woodlands Glade references the green spaces in the development that serve as ideal retreat points.

**360 - Principal Leads and Team Members:**  
Ashvinkumar Kantilal, Ong Hwee Jin Architecture  
Lena Quek Landscape  
Rankine&Hill M&E Engineering  
Henry Gunawan, Chen Soo Pin, Lim yan ping and Simon Loh C&S Engineering



Woodlands Glade is located at the junction of Woodlands Avenue 9 and Gambas Avenue with the future North-South Corridor running parallel on top of Gambas Avenue. For this project, the 360 Solution was applied and our teams from the architecture, landscape, and M&E units were engaged. The teams worked together to seamlessly weave urban connectivity throughout the development and to existing neighbouring precincts.

As the last 'puzzle piece' that fits snugly into a residential zone, Woodlands Glade comprises four residential blocks, one multi-storey car park (MSCP) with roof garden and amenities. The design of the building façade is inspired by tree branches and matches Woodlands Precinct's "forested" theme. The random and angular abstract motif of the branches is manifested in the patterns on the screens, columns, and the roof crown of the residential blocks.



The residential blocks are 16-storeys high and arranged in three linear rows parallel to one another. This layout encloses a series of open spaces where multiple activities can take place. The blocks are spaced generously from one another with units taking advantage of views of the precinct's landscaped spaces. Outdoor facilities such as a multi-age children's playground, fitness stations for adults and the elderly, pavilions, shelters, trellises, and lush greenery provide gathering and recreational spaces on the first storey as well as on the MSCP roof garden.

There is a well-landscaped space with multiple amenities at the north of Woodlands Glade, creating a welcoming respite in nature, while the MSCP's roof garden provides outdoor recreational space with easy access through link bridges in between residential blocks. It also provides the units with a garden view. The expansive, landscaped courtyards in between blocks were intentionally designed to integrate and connect with the large central communal space. The residents can socialise not only at Woodlands Glade's shelters, meeting points, seating areas and 3G facilities, but also at neighbouring amenities. The shelters and trellises offer ideal spots for small-group interaction and family gatherings along the covered link-way between the precincts.

A network of footpaths, pavements and sheltered walkways branches out from the central landscaped spine. These pedestrian connections are carefully mapped out to shelter residents to and from every block and the communal amenities of the precinct.

ONG&ONG Thailand

## Vittoria Cotton Tires Factory

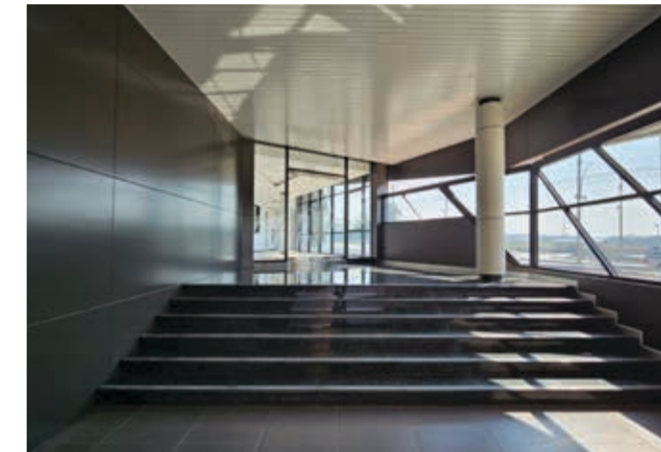
Renowned innovators in the bicycle tyre market, Vittoria's fast-expanding operations meant a new factory was in order - its seventh in the Land of Smiles since 1988!

**Principal Lead:**  
Nhong Virakun Panyaratabandhu Architecture

Credited with creating the most advanced cotton tyres in the world, Vittoria tyres are familiar to cyclists the world over. The Italian brand engaged ONG&ONG Thailand to design its new 10,000 sqm cotton tyre manufacturing plant at Preaksa Industrial Estate, Bangpoo, Thailand.

The architecture team was inspired by the Vittoria brand DNA, which cites "dynamics, precision and reliability" as its key values. Rendered in a sophisticated ecru tone, the factory sports a coated steel facade with subtle diagonal slats that visually underscore the brand's innovative approach in developing unique products.

Darker grey tones and angular elements anchor the interior spaces, while windows look out upon a lushly landscaped internal courtyard, reflecting biophilic design principles. The double-storied entrance and



office areas feature full-height glass panels to let in light and external views. Vertical louvres front the upper-level windows, helping to mitigate heat gain.

Certified as a carbon-neutral operation, the factory has solar panels on its rooftop, electric automated guided vehicles, and an electric vulcanisation process. Officially opened in October 2023, the Vittoria Cotton Tires factory is set to revolutionise the cycling industry.

The building was nominated for Bluescope's Design Award 2023.

ไม่ใคร่คิดกับการสร้างสรรค์อย่างง่ายที่ทันสมัยที่สุดในโลก ยางวิคตอเรียเป็นที่ยอมรับของนักปั่นจักรยานทั่วโลก ลูกค้ายางจักรยานแบรนด์อิตาลีได้มาจ้างบริษัท ONG&ONG Design Co., Ltd ประเทศไทยให้ออกแบบโรงงานผลิตยางฟลายแห่งใหม่ขนาดมากกว่า 10,000 ตารางเมตรที่นิคมอุตสาหกรรมแพรงษาบางปู ประเทศไทย

ทีมงานสถาปัตยกรรมได้รับแรงบันดาลใจจาก DNA ของแบรนด์ Vittoria ซึ่งอ้างอิง "ไดนามิก, ความแม่นยำ และความน่าเชื่อถือ" เป็นค่านิยมหลัก โรงงานตกแต่งด้วยโทนสีสีน้ำตาลอ่อนที่ดูซับซ้อน โดยมีส่วนหน้าอาคารเป็นเหล็กเคลือบพร้อมแผ่นลอนติดตั้งแนวระแนง ซึ่งเน้นให้เห็นถึงแนวทางที่เป็นนวัตกรรมของแบรนด์ในการพัฒนาผลิตภัณฑ์ที่มีเอกลักษณ์เฉพาะตัว โทนสีเทาเข้มและองค์ประกอบเชิงรูปทรงช่วยยึดพื้นที่ภายในลูกกำหนดให้อยู่ในพื้นที่

สามเหลี่ยม ในขณะที่หน้าต่างของพื้นที่ใช้สอยได้หลังคาสามเหลี่ยมนี้ คือ พื้นที่รับประทานอาหารพนักงาน สามารถมองออกไปเห็นลานภายในที่มีภูมิทัศน์อันเขียวชอุ่มสะท้อนถึงหลักการออกแบบที่เป็นมิตรกับสิ่งแวดล้อม ทางเข้าและพื้นที่สำนักงานสองชั้นมีแสงกระจกสูงเพื่อให้เห็นและวิวนอกเข้ามาได้ บ้านเกิดแนวตั้งด้านหน้าหน้าต่างระดับบน ช่วยลดความร้อนที่ได้รับจากทิศตะวันออก

โรงงานแห่งนี้ได้รับการรับรองว่าเป็นการดำเนินงานที่เป็นกลางทางคาร์บอน โดยมีแผงโซลาร์เซลล์บนหลังคา ควบคู่ทางอัตโนมัติด้วยไฟฟ้า และกระบวนการวัลคาไนเซชัน (Vulcanisation) ด้วยไฟฟ้า

โรงงาน Vittoria Cotton Tyres เปิดอย่างเป็นทางการในเดือนตุลาคม 2023 โดยมีกำหนดจะปฏิวัติอุตสาหกรรมปั่นจักรยาน



# Happy One Central

Bringing affluence to Thu Dau Mot in Vietnam, the Happy One Central development, with its contemporary design and smart technology, will earn a place in your heart.

Vietnam

**Principal Leads and Team Members:**

Hoang Huu Dung, Huynh Viet Hoang, Duong Ngoc Duc *Architecture*

Sitting on the left bank of South Vietnam's Saigon River is Thu Dau Mot – the capital city of the Binh Duong Province. A part of Ho Chi Minh City's metropolitan area, Thu Dau Mot is rapidly expanding and attracting an influx of foreign investment and travellers. The Happy One Central development was conceived to cater to both expats and locals making Thu Dau Mot their home.

ONG&ONG Vietnam was handpicked for this project, and they certainly exceeded expectations. Inspired by the design and style of Singapore apartments, the team devised a masterplan which includes exterior architecture, infrastructure, transportation and parking facilities, utilities, and interior details while also incorporating elements of local culture into the narrative.

The tallest building in Binh Duong with 40-stories for each tower, Happy One Central offers its residents miles of unrestricted views. The best way to enjoy this is to head to the sky bridge on the rooftop. Serving to connect the two towers, the bridge also serves as a lookout point for residents to appreciate the cityscape.

One unmissable trait of the design application is that it is heavily influenced by Asian, specifically Vietnamese culture and lifestyles. Some of the key considerations include the tropical climate and Feng Shui beliefs. These translate to spaces that optimise natural light and ventilation.

Leading and overseeing the Happy One Central project, ONG&ONG also worked with other consultants specialising in landscape as well as lighting. With the purpose of creating a lively ambience, the lighting solution applied to the building façade is designed to incite joy and happiness. A system of colourful LEDs interspersed among the trees make the interior landscape resemble a "fairy tale garden at night". With this bold and innovative move, Happy One Central is one of the first apartment complexes in Binh Duong to use facade and landscape lighting technology.

Designed to deliver an affluent living experience to homeowners, Happy One Central boasts top-notch facilities such as a 3D golf course, aerial cinema, infinity pool, jacuzzi, light square, koi aquarium, gym, and yoga studios, among others. These amenities beckon residents to their oasis in the heart of the city.



Dự án Happy One Central được hình thành để phục vụ cho cả người nước ngoài và người dân địa phương, biến Thủ Dầu Một thành ngôi nhà của họ.

ONG&ONG Việt Nam là tư vấn đã được chủ đầu tư lựa chọn cẩn thận cho dự án này, và họ đã không làm chủ đầu tư thất vọng. Lấy cảm hứng từ các căn hộ Singapore, nhóm nghiên cứu đã đưa ra quy hoạch mặt bằng tổng thể bao gồm kiến trúc bên ngoài, cơ sở hạ tầng, phương tiện giao thông và bãi đậu xe, tiện ích và chi tiết nội thất đồng thời kết hợp các yếu tố của văn hóa địa phương vào thiết kế.

Là dự án cao nhất Bình Dương với 40 tầng cho mỗi tòa tháp, Happy One Central cung cấp cho cư dân tầm nhìn không giới hạn, đặc biệt là với cây cầu treo trên không. Cây cầu treo là nơi kết nối giữa hai tòa tháp, đồng thời cũng là điểm quan sát cho những cư dân muốn ngắm toàn bộ cảnh quan thành phố.

Khi đặt chân vào dự án, một đặc điểm nổi bật không thể bỏ qua đó là thiết kế mang đậm văn hóa và lối sống của Châu Á, cụ thể là Việt Nam. Khí hậu nhiệt đới và tín ngưỡng phong thủy cũng đã được tư vấn cân nhắc cẩn thận để tối ưu hóa ánh sáng tự nhiên và thông gió cho căn hộ.

Khi dân đặt dự án Happy One Central, ONG&ONG cũng đã phối hợp với các chuyên gia tư vấn về cảnh quan và chiếu sáng. Với mục đích tạo ra một bầu không khí sống động, giải pháp chiếu sáng cho mặt tiền tòa nhà được thiết kế để kích thích niềm vui và hạnh phúc. Một hệ thống đèn LED đầy màu sắc được sắp đặt xen kẽ giữa những tán cây, làm cho cảnh quan bên trong giống như một "khu vườn có tích về đêm". Với bước đi táo bạo và sáng tạo này, Happy One Central là một trong những khu căn hộ đầu tiên tại Bình Dương sử dụng công nghệ chiếu sáng mặt dựng và cảnh quan.

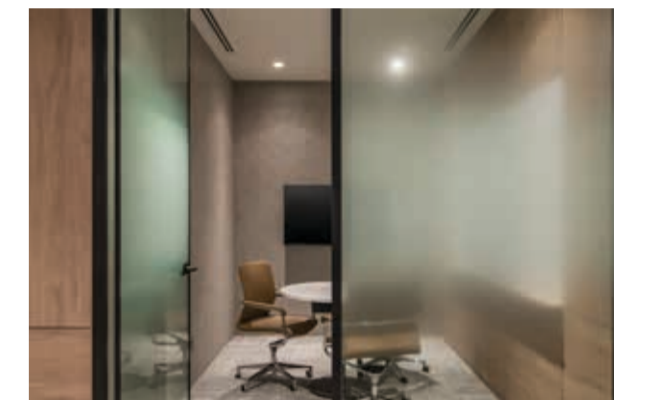
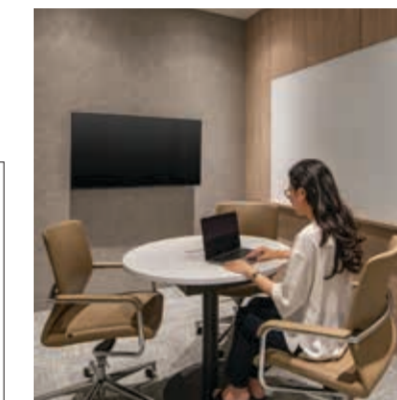


# Jafco Asia

ONG&ONG has designed a contemporary workplace that nurtures and develops the personnel of Jafco Asia in a smart, yet homely atmosphere. Singapore

**Principal Leads and Team Members:**

Teo Boon Kiat and Abigail Marcella *Workplace Interior*



practicality, space, and light, capturing at once the feel of high-end hospitality whilst meeting the various needs of employees, regardless of the way they work. Inspired by the hues of the nature, browns, blues, and greys dominate the space, resulting in an office that is spacious as well as easy on the eyes.



At 10 Collyer Quay in Singapore sits the Ocean Financial Centre and within this towering building is the Jafco Asia office that has been designed by ONG&ONG. Since its establishment in 1990, Jafco Asia has grown to become a leading brand for the venture capital industry in the Asia Pacific region. To reflect its growth, ONG&ONG designed the Singapore office as a true physical representation of the business.

Stepping inside, the brand's identity is immediately established, with custom signage in the entryway. Placing emphasis on straight, sleek, and well-defined lines, the space superbly balances design and

Striving for simplicity, the team applied a 'less is more' approach which allows the natural materials that have been used throughout the space to shine. The floor plan for Jafco has been divided into workstations, breakout rooms, as well as meeting rooms with a seamless design and colour palette that gives the premises an understated elegance. Meeting rooms are equipped with the latest AV technology to provide a rich virtual experience.



The pantry area is a welcoming space that is open to everyone, encouraging relaxation over lunches with colleagues or simply for taking a break. Warmer, muted colour tones create a resimercial feel that softens the sensory experience of the office.



Jafco Asia



IMMORTAL Singapore

# Placemaking for Kallang Park Connector Underpasses

The updated Kallang Park Connector presents avid outdoor enthusiasts with enhanced accessibility to nature spaces across the island and serves to enhance ecological connectivity between natural habitats. **Singapore**

**Principal Leads and Team Members:**  
Stanley Tan and Gary Soh *Brand Engagement*



Implemented by the National Parks Board, the Park Connector Network was built in the 1990s to improve connectivity between parks and provide accessible leisure options for Singaporeans. Kallang Park Connector was the first park connector completed in 1992 and linked Bishan-Ang Mo Kio Park with Kallang Riverside Park.

Fast forward to the present, there are plans to enhance park users' experience along this park connector by providing a more seamless connection so that it can also serve as a useful and pleasant commuter cycling route from central Singapore to the south. For this exercise, the IMMORTAL team was engaged to devise placemaking elements and environmental branding for the new underpasses to add aesthetic appeal and reference the history of the river. The team based the idea for the thematic environmental graphics upon a retelling of the river's timeline. Divided into five scenes, the completed environmental enhancements follow the evolution of the Kallang River, from when flora and fauna were its only inhabitants to the modern lifestyle attractions that span the riverbank today.

The first scene sets the original stage for the Kallang River, detailing a pristine, untouched habitat of forest while the second scene shows how long before human beings settled on the Kallang River, numerous species of wildlife called the riverbanks home. This includes a harmonious diversity of predator and prey. Documenting the early 1900s, the third scene is of the aboriginal Orang Kallang who made the river their home and looked to it as an important source of food and transportation. Peppered in the scene are small traditional boats known as sampans which were often used as a means of transportation and for fishing activities.

Scene four depicts progress and modernisation where wooden houses gave way to industrial buildings. Iconic structures such as Chwee Kang Beo

Association, Kallang Airport Building and National Stadium are immortalised on the walls of the Kallang Park Connector. The final scene brings the Kallang River into contemporary times. A redevelopment programme in the early 2000s transformed the riverbanks to bring back greenery, offer new floating decks, pathways and boardwalks, evolving it into a lifestyle and recreational artery.

The team also created distinctive gantries to signal entry points to multiple underpasses, as each underpass has specific height restrictions. As a safety feature these gantries – featuring flora and fauna elements – is lit up at night for easy identification by users. These gantries are strategically located at the CTE, Kallang Bahru, and Upper Boon Keng Underpasses. Additionally, the ramps of the Serangoon Road and Bendemeer Road Overpass feature fish inlays designed by the IMMORTAL team. This park connector network not only prioritises functionality but also contributes to a visually appealing and navigable urban landscape.



SCA Design

# discovermarket

This contemporary design by SCA gives discovermarket a fresh look that is both modern and authentic. **Singapore**

**Principal Leads and Team Members:**  
Kee Choon Yen, Ho Kok Yuen, Norman Chan and Albert Chin *Workplace Interior*



At the junction of Telok Ayer Street, lies Boon Tat Street, a heritage site located in Singapore's Central Business District. Sited in this culturally- and historically-rich street is discovermarket – a white labelled insurance solution provider for distribution partners.

For discovermarket, having the right office space that reflects the nature of their business and the future while also honouring the significance this heritage site holds is pivotal. For this purpose, they handpicked SCA Design, and the team has certainly delivered a space that ticks the right boxes.

SCA were presented with a distinct opportunity to harmoniously combine the past and the present, safeguarding the heritage structure while introducing contemporary design elements. The team used natural finishes such as art brick walls and textured paint, coupled with details to take the office from ordinary to extraordinary.

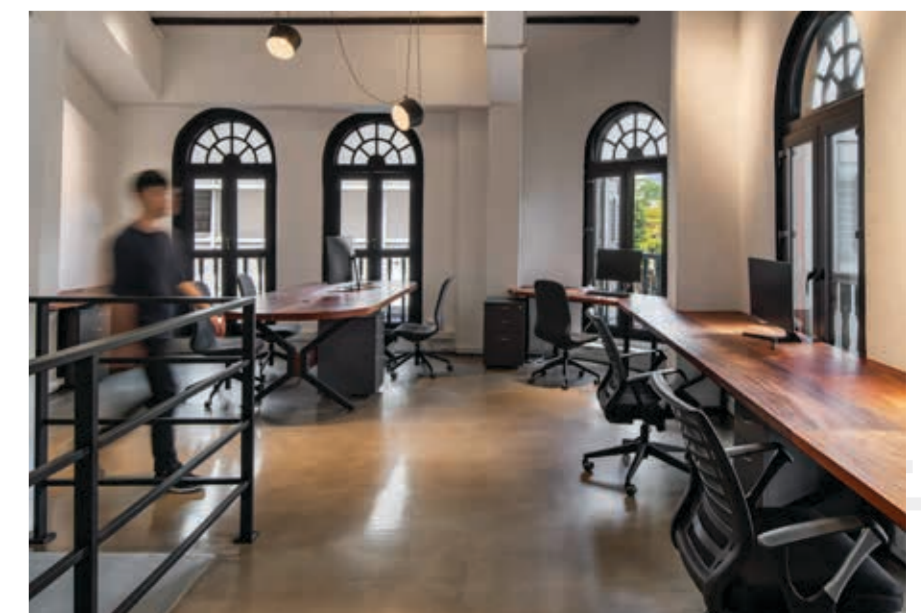
As you enter, you'll be greeted by a backlit logo on a white brick wall, which creates a three-dimensional effect as you transition into a blend of discovermarket's blue colour palette, gradually blending into warm orange bricks as you make your

way into the bar area. The modern bar counter, adorned with black Kit Kat tile accents on its base and a stainless steel-edged anti-fingerprint top, seamlessly integrates into the historic surroundings. Adding to the inviting ambience is the "discovermarket bar" neon light sign, which imparts a sense of cheer and warmth to the space.

From the reception area, one immediately notices the mezzanine work lounge, which benefits from an abundance of natural light pouring into the office space through the windows. This space is distinct from the main work zone, which is characterised by blue textured wall paint.

Further into the office lies the collaboration area. This zone is furnished with agile furniture, expansive glass writing boards and a large mobile TV, offering staff the flexibility to configure the workspace according to their requirements, while also serving as a town hall area. A gradient frosted film was applied to the entire floor-to-ceiling window to enhance privacy when conducting team discussions.

The discovermarket office embodies contemporary design, seamlessly fusing modern aesthetics with the preservation of its heritage structure.





SCA Design

## Hitachi Vantara

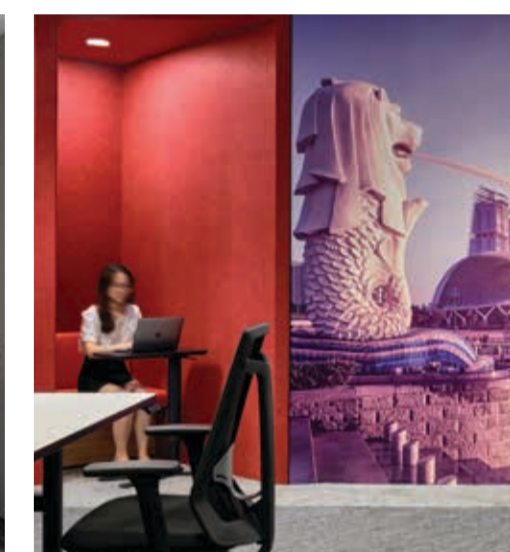
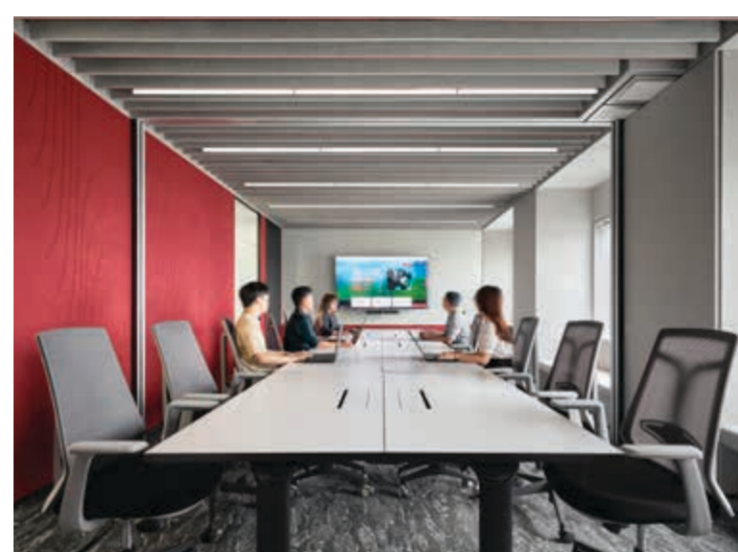
Enabling creativity and innovation, the Hitachi Vantara office is equal parts inspiring and functional.

Singapore

**Principal Leads and Team Members:**  
Kee Choon Yen, Ho Kok Yuen, Norman Chan and Albert Chin *Workplace Interior*

Hitachi Vantara is located at Suntec City, an iconic integrated development at the heart of the Marina Centre precinct. To conceptualise a design concept for their office space, Hitachi Vantara engaged SCA to create a space that not only reflects their company's vision and aspirations but also serves to inspire and motivate their staff.

SCA drew inspiration from the infinity symbol to form a looping flow. They designed the space around how people move while also maximising opportunities to build connections. Seamlessly connecting the space to the brand, SCA has used red, grey, and blue within the interior. The effect is timeless, clean, crisp, and bright, reflecting the new



look of this technology company. The front-of-house branding is bold and striking, with a lit curved plaster ceiling that connects the reception area, demo lab, refreshment space, and welcome lounge.

Adjacent to the reception is the welcome lounge and refreshment area. This zone comes alive in the mornings when employees congregate for coffee and breakfast while catching up with one another. The beverage point has been purposefully designed in a warm tone for demarcation. Sofa sets, placed in the space approaching the window perimeter, form the welcome lounge. Further in is the demo lab, where SCA applied a dichroic film that has a colour gradient to simulate data movement. When people walk around the room, its colour will appear to change!

The conference room offers a stunning view that enhances the overall atmosphere. Acoustic panels refine the interior columns and walls, elegantly highlighting the outdoor cityscape. An operable wall offers flexibility to adjust the meeting room's size

according to the users' needs. The other three themed meeting rooms represent Singapore, Japan, and San Francisco, respectively the firm's Asia Pacific Regional Hub, origin country, and headquarters.

The most challenging aspect involved the optimal utilisation of the various small and irregular spaces around the building's core. The design team brainstormed and transformed the odd spaces into various functional collaborative spaces, including focus pods, high-touchdown tables, and private phone booths.

This approach aligns with the new office design principles, representing creativity, innovation, and maximising space utilisation, reflecting Hitachi's Values of Harmony, Sincerity, and Pioneering Spirit. The new office design also serves as a bridge, connecting what's now to what's next, signalling its journey into the future.



# Hitachi Vantara



ABeam



SCA Design

# ABeam Consulting

SCA delivers a flexible, multipurpose office that maximises space and encourages collaboration and creativity. **Singapore**

**Principal Leads and Team Members:**  
Kee Choon Yen, Ho Kok Yuen, Norman Chan and Albert Chin *Workplace Interior*

Ikigai is a Japanese concept that means one's 'reason for being'. SCA has taken this term as inspiration for the design of ABeam Consulting – a consulting firm that helps clients or businesses find their IKIGA!! The client's brief was centred on the need to have an interior that reflects cosiness, comfort, and homelike vibes and SCA designed and delivered a space where colleagues can connect, collaborate, and thrive by focusing on things like simplicity, minimising clutter, warm neutral and blue tones, and lots of natural light.

Upon entering, visitors are greeted by a curved wall with a backlit ABeam Consulting logo and spotlight, while a running LED strip adds brightness to the

area. The team has ingeniously completed the space with a small waiting area by the curved wall. Cleverly concealed just behind this curved wall is a beverage point and refreshment area. Envisioned as a collaborative hub, the space allows employees to get together and share a meal or conversation. Some noteworthy elements are that all the furniture including the operable wall within this space is movable and adjustable, enabling it to adapt to various needs.

The boardroom features acoustic wall panels with grooves for improved sound quality. A walkway lined with lockers on one side and a tropical mural on the other paves the way to the private and collaborative

work area that is filled with a selection of different-sized single or multiple occupancy booths and open workspaces. Aesthetically, the workplace is marked by high-quality finishes and a neutral palette, with exposed ceilings.

Spanning approximately 7,100 sq. ft., this office is a shining example of eco-friendliness, resource efficiency, and energy management. The Smart Air Conditioning Zoning and Control system, which operates on timers and senses space usage, responds dynamically to space demand. This ensures that energy consumption is optimised while keeping the workspace comfortable.



Rankine&Hill Singapore

## Parc Canberra

Parc Canberra is inspired by the Australian way of living that is replete with greenery and a wide range of leisure-related facilities. [Singapore](#)

**Principal Leads and Team Members:**  
Rankine&Hill M&E Engineering



Being able to unwind at home in an idyllic environment is the key focus at Parc Canberra, where residents can enjoy a languid, Australian-inspired way of life. This theme was chosen as the Canberra estate itself was named after Australia's capital city as its allied soldiers settled in Singapore during the British colonial rule.

The nature-inspired residence is imbued with artful contours offering residents a charming outlook and a heightened sense of comfort and opulence. For this development, Rankine&Hill were engaged to lend their M&E expertise. Jointly developed by Hoi Hup Realty and Malaysia's Sunway Developments, the 496-unit development along Canberra Link in Sembawang's District 27 exudes an outdoorsy and laid-back vibe.

The developer has crafted a development with a strong and refreshing theme. The design of this development draws strongly from its artistic

Aussie café culture, displaying distinctive chic artworks and industrial-looking black steel and tan leather. The facilities reflect the charms of an Aussie lifestyle, such as the development's four pools and various open decks, which beckon homeowners to bask in the sun, reminiscent of Australian families' love for outdoor activities.

For this project, the mechanical engineering team were responsible for designing the heating, ventilation, and air conditioning systems, designing the plumbing systems for both potable water and sewage while also planning the fire protection system to ensure the safety of the residents. Other items that were within the team's purview were the maintenance and filtration systems for the swimming pool. The team also had to incorporate energy-efficient designs, considering insulation, efficient lighting, and renewable energy options to reduce the development's carbon footprint.



Rankine&Hill Singapore

## Tampines North Polyclinic

The newly-opened Tampines North Polyclinic is designed to promote both community and health initiatives, dispelling the anxiety of visiting the doctor. [Singapore](#)

**Principal Leads and Team Members:**  
Rankine&Hill M&E Engineering



The Tampines North Polyclinic in Singapore is a healthcare facility that provides comprehensive and holistic primary care for the growing population in Tampines North. This modern polyclinic facilitates holistic care for the whole family. For this clinic spanning four levels, Rankine&Hill were roped in to provide their expertise in M&E works.

Located at the junction of Tampines St 61 and Tampines Ave 4, the polyclinic's architecture

prioritises accessibility and patient comfort. The layout of the building ensures ease of navigation for patients and staff, with clear signage and open spaces. The interior design is characterised by well-lit, spacious waiting areas and consultation rooms, providing a calming and patient-friendly environment. Lush landscaping is composed around the building in the form of terraced gardens and therapy-themed roof gardens for community engagement and enjoyment.

The M&E components for this project play a crucial role in ensuring the facility's functionality and efficiency. The building's mechanical systems are designed to maintain a comfortable and healthy indoor environment. Advanced heating, ventilation, and air conditioning (HVAC) systems ensure optimal air quality and temperature control. The clinic's mechanical engineering also includes robust backup systems to ensure uninterrupted healthcare services. These systems are designed to maintain critical operations in case of power outages or other emergencies, underscoring the commitment to patient care and safety.

In addition to aesthetics, the clinic boasts an ethnobotany garden and incorporates elements of nature and sustainability into its design that align with Singapore's commitment to environmental responsibility. Eco-friendly features such as solar panels and high-efficiency air-conditioning chillers, as well as pandemic preparedness measures like shutters that can effectively split the building into two have been thoughtfully incorporated.

Tampines North Polyclinic not only serves the healthcare needs of its community but also sets a benchmark for future healthcare facilities in Singapore and beyond.

Rankine&Hill Singapore

## Haus on Handy

Promising an exceptional lifestyle amidst the vibrancy of the city, Haus on Handy is a coveted address for those seeking a prestigious and convenient place to call home. [Singapore](#)

**Principal Leads and Team Members:**  
Rankine&Hill M&E Engineering



Haus on Handy is a prestigious residential development located in the heart of Singapore's vibrant Dhoby Ghaut area. Rankine&Hill were engaged for the mechanical engineering works of this luxurious condominium that offers a blend of modernity and heritage charm, making it a sought-after address. The development boasts a prime location, with easy access to shopping malls, cultural attractions, and excellent transport links.

Boasting an impressive architectural design, Haus on Handy stands tall amidst the lush greenery of Mount Sophia. Residents enjoy panoramic views of the city skyline and easy access to a plethora of amenities. Its prime location provides convenient access to Orchard Road, Singapore's premier shopping and entertainment district, as well as educational institutions, healthcare facilities, and major transportation hubs.

The development features a range of meticulously designed units, from cosy one-bedroom apartments to spacious penthouses, catering to the diverse needs of residents. The interiors are appointed with top-notch finishes and cutting-edge technology, ensuring a comfortable and contemporary living experience. One of the key aspects of this work scope is the building's air conditioning and ventilation systems. Given Singapore's tropical climate, efficient climate control is essential for residents' comfort. The team meticulously designed and implemented systems that ensure optimal temperature and humidity levels throughout the year while maintaining energy efficiency.

Haus on Handy's array of facilities includes a swimming pool, fitness centre, communal gardens, and BBQ pits, providing a luxurious oasis for relaxation and socialising. With its unbeatable location and sophisticated design, Haus on Handy is a showpiece of modern urban living in Singapore.



Rankine&Hill Singapore

## Affinity at Serangoon

Representing a perfect blend of modern design and thoughtful planning, Affinity at Serangoon stands as a symbol of innovative and comfortable urban living in Singapore. [Singapore](#)

**Principal Leads and Team Members:**  
Rankine&Hill M&E Engineering



Affinity at Serangoon, a residential development in Singapore, epitomises modern urban living. Developed by Oxley Holdings, the project is a testament to innovative design and meticulous planning. Featuring a contemporary facade that seamlessly blends with the surrounding landscape, Affinity at Serangoon is designed to maximise natural light and ventilation, creating a comfortable and sustainable living environment for residents.

Rankine&Hill were engaged for their mechanical engineering expertise and the team played a pivotal role in ensuring comfort and functionality across the development. The team was responsible for the design and implementation of the HVAC systems.

Given Singapore's hot and humid climate, these systems are vital in maintaining a comfortable living environment. Engineers had to optimise energy efficiency while ensuring effective cooling and air circulation. Additionally, Rankine&Hill were involved in the design of plumbing and sanitation systems to provide residents with reliable and efficient access to water and wastewater management.

Affinity at Serangoon is characterised by its striking modern aesthetic, a perfect setting for this comfortable and sustainable living environment. The use of sustainable building materials and energy-efficient features makes it an environmentally conscious development.

# REDEFINING THE FUTURE WITH GENERATIVE DESIGN

A revolutionary approach to design is proving to be a game changer in improving lives for a more sustainable, functional, and beautiful future.

Have you ever wondered what heights you could scale if you were not hindered by limitations? Virtually at least, you can now reach for the stars thanks to generative design powered by Artificial Intelligence (AI).

Generative design is turning dreams into reality across multiple industries. In 2016 for example, at the annual Met Gala hosted by Vogue, model Karolina Kurkova wore a dress that was half man, half machine-made. The "Cognitive Dress" is the product of a partnership between British design studio Marchesa and Watson, IBM's cognitive computer. The gown of white tulle was embroidered with 150 LED-connected flowers. The embedded LED lights were data-driven, changing colours in real time to reflect the mood of social media users who were commenting on the gala through Twitter!

Generative AI employs deep learning algorithms to generate new data. It can create realistic images, compose music, write coherent text, and simulate human-like conversations. By utilising neural networks, machines can learn and replicate patterns, resulting in the production of novel content.

Generative design software operates on AI algorithms that employ complex mathematical models, optimisation techniques, and pattern recognition to generate solutions that most human designers might not explore.

The real-life applications of Generative AI are abundant and growing. Here are a few noteworthy examples:

#### • OpenAI's GPT-4:

This language model can generate human-like text, leading to advancements in natural language processing, content creation, and virtual assistants.

#### • DeepArt:

This platform employs Generative AI to transform photographs into artistic masterpieces, mimicking the styles of famous painters like Van Gogh and Picasso.

#### • Google's DeepDream:

This project utilises Generative AI to create surreal and dreamlike images by modifying existing pictures based on learned patterns.

#### • Ansys Discovery:

Discovery is a 3D simulation software that's highly beneficial for engineers who need to evaluate the design of products, like motors, hardware, and mechanical parts.

For the built environment, generative design is ushering in a new era of design conceptualisation. It is opening new avenues for architects and designers to be bolder. Successful designs address financial, technical, environmental, and human requirements. Here are some of the benefits that this technology brings to the AEC profession.

#### Optimal Space Utilisation

Generative design employs algorithms to explore a multitude of design options rapidly. This results in more efficient floor plans, ensuring that every square foot is utilised for more functionality in every development.

#### Sustainable Design

One of the most pressing concerns for the built environment is sustainability. Generative design can help minimise environmental impact. Through the application of algorithms, generative design can propose numerous design variations, considering materials, energy efficiency, and ecological footprints. It can take into account factors such as site conditions, solar orientation, and climate data to create designs that maximise energy efficiency while minimising resource consumption.

#### Innovative Forms and Structures

Generative design encourages architects to think outside the box as it allows for the easy exploration of unconventional and innovative building forms and structures. With the aid of algorithms, architects can challenge traditional design constraints and craft buildings that are not only functional but also architecturally striking.

#### Contextual Sensitivity

Architecture is deeply rooted in its context – be it cultural, historical, or environmental. Generative design can take all these factors into account. It can analyse local conditions, historical significance, and cultural nuances to produce designs that are sensitive to their surroundings. This results in buildings that seamlessly blend with their environment, enhancing a sense of place and cultural identity.

#### Cost Optimisation

Generative design can play a crucial role in optimising construction and operational costs. By analysing different design variations, it can suggest



efficient construction methods, reducing labour and material costs. Moreover, generative design can identify areas of redundancy in a design, helping to streamline the building process and eliminate unnecessary expenses.

#### Flexibility and Adaptability

Generative design can create environments that are flexible and capable of adapting to changing requirements. For instance, it can help in designing office spaces that can be easily reconfigured as work patterns evolve, or residential buildings that can accommodate changing family dynamics. Such adaptability ensures the longevity and relevance of a building.

#### Streamlined Construction Processes

Generative design not only enhances the design phase but also streamlines the construction process. By providing detailed design specifications and efficient construction methodologies, it minimises errors and delays during construction. This results in projects that are completed on time and within budget, leading to satisfied clients and stakeholders.

#### Improved Collaboration

Generative design often operates in a collaborative digital environment, which fosters communication and teamwork among architects, engineers, and other stakeholders. This enhances the coordination of complex design projects and ensures that all aspects, from structural integrity to aesthetics, are considered holistically.

Let's examine a few case studies of recent projects that have benefitted from generative design tools:

#### Urban Housing by Daiwa Housing Industry, Japan

More than 91% of the Japanese population lives in cities. The ever-rising demand for urban housing has been a challenge for many years. However, generative design has helped to turn high-density urban housing into a reality. The Daiwa House Industry is a Japanese company that uses generative design for its projects. They create stunning living spaces, especially on small plots.

The designers define the existing parameters such as the materials, aims, goals, techniques, and restrictions. Thereafter, their software develops multiple possible solutions. The final decision is then taken by the designers, who select the most sensible design option.

#### Urban Infrastructure in Copenhagen, Denmark

Copenhagen is known for its commitment to sustainability, liveability, and innovative urban planning. An area where generative design has been applied is bicycle-friendly infrastructure where generative design tools are used to optimise the planning and layout of bike lanes, bike-sharing stations, and traffic management to ensure safe and efficient commutes for cyclists. In addition, the city's waterfront areas have been revitalised through generative design.

The design of the Kalvebod Waves, a unique wave-like promenade along the harbour, used generative design principles to articulate its distinctive form. This approach blends aesthetic appeal with practicality, creating public spaces that are both visually striking and functional.

#### Shanghai Tower, China

Generative design played a pivotal role in the construction of the Shanghai Tower, one of the world's tallest buildings. The tower's distinctive spiralling form, which helps with wind resistance and structural stability, was developed using generative algorithms. These algorithms optimise the tower's structural design and enabled the use of less steel than conventional skyscrapers, contributing to sustainability and cost efficiency.

As technology continues to advance, generative design will likely play a pivotal role in elevating the field of architecture, inspiring architects to push boundaries and create buildings that are not just functional but exceptional in every way. This paradigm shift is redefining the future of building design, one algorithm at a time.

*\* The article's images were created with Midjourney, a generative AI program. With this AI image creator, we specified the desired images by inputting prompts, and the site delivered high-quality renderings.*





**PROJECTS**  
**AtWater's Envable Architecture**

Located on 5.2 acres of land in the prime area of Section 13 in Petaling Jaya, Selangor is AtWater, by Paramount Property Development. This newly-built integrated development is targeted at those looking for a balance in residential, commercial and retail spaces. AtWater has been designed to seamlessly integrate these components. The project is complemented by lush greenery and water features, culminating in a tranquil and harmonious yet stylish, modern environment that is sure to meet the expectations of the modern consumer.



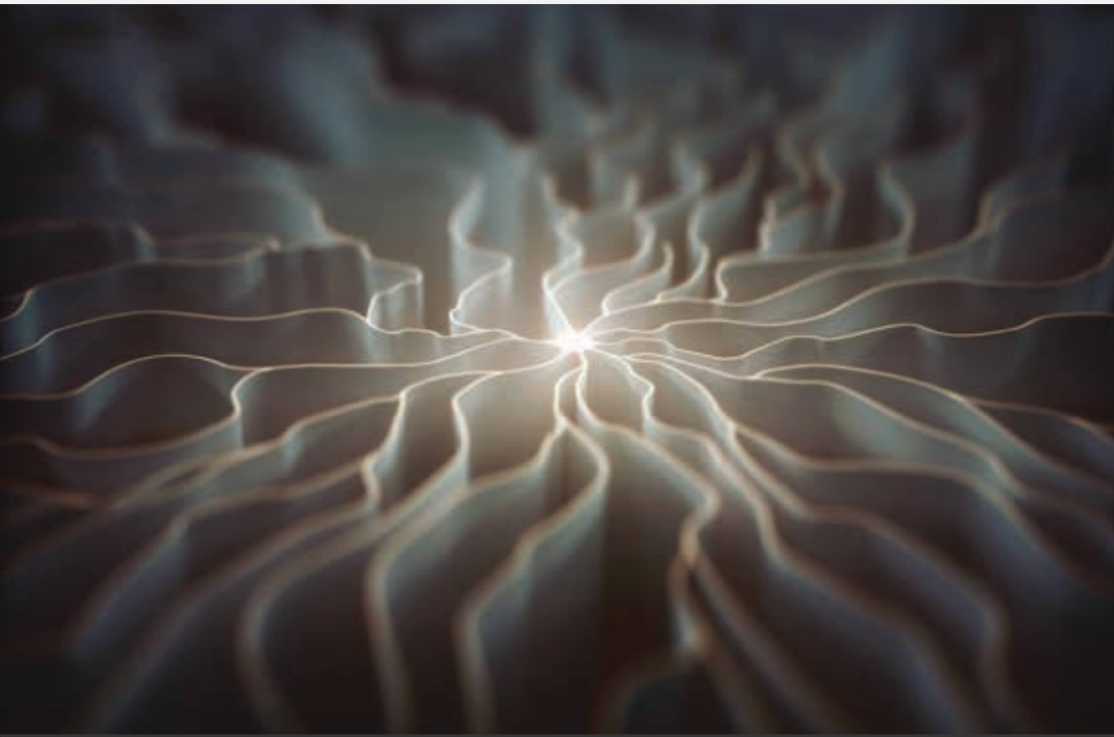
**PROJECTS**  
**Bukit 828 Built for the Elite**

Bukit 828 is a residential development located in the Upper Bukit Timah area of Singapore. Designed by ONG&ONG, the building features a contemporary and elegant design that blends seamlessly with the surrounding landscape. Consisting of 34 units and spread across 6 floors, each unit features a spacious and functional layout that maximises natural light and ventilation. Bukit 828's architecture is characterised by a minimalist aesthetic, with a simple yet sophisticated façade that features clean lines and a monochromatic colour scheme.



**PROJECTS**  
**360 Solution Applied to HDB Tampines GreenFoliage**

Tampines GreenFoliage, the latest HDB development located in Tampines North, features the 360 Solution by ONG&ONG. Inspired by its location near two proposed parks and envisioned to be a green haven, the teams at ONG&ONG and Rankine&Hill have lent their Architecture, Landscaping, M&E, and C&S engineering expertise. Tampines GreenFoliage has some distinctive design features from its colour palette to the facade that give the project more character.



**INSIGHTS**  
**Harnessing AI in the Modelling of Built Spaces**

Artificial intelligence and machine learning have been working their way into most major industries including the architecture, engineering, and construction (AEC) industry. The construction industry has seen an increase in its use of artificial intelligence, with the AEC's most recent technological advancement being its implementation of Integrated Digital Delivery (IDD). The focus of IDD is the utilisation of digital technologies to maximise the efficiency of a project's implementation, construction, and delivery. It covers four key phases: Digital Design, Digital Fabrication, Digital Construction, and Digital Asset Delivery and Management, where AI has the potential to have key roles in each of these phases.



**NEWS**  
**SEAB Publications Features Renaissance Bali Nusa Dua Resort!**

The latest edition of Southeast Asia Building (SEAB) focuses on hospitality and showcases luxurious hotel projects in Asia. Gracing the cover and featured within this issue is the Renaissance Bali Nusa Dua Resort by ONG&ONG, where the architecture team have paid homage to Balinese culture by adopting the Tri Angga concept for the design process. SEAB is a Singapore-based trade magazine devoted to Architecture, Interior Design, Landscaping and M&E Engineering, circulated to more than 110,000 building professionals across the Asia Pacific region.



**NEWS**  
**Cultivating Camaraderie Through Celebrations**

At the heart of every successful business are the employees and it is important to cultivate a healthy engagement between Management and employees as it helps improve work culture, increase productivity, and build relationships. Welcoming the opportunity to bond with fellow colleagues, the team recently got together to celebrate Singapore CEO of ONG&ONG Architecture, Wendy Tan's birthday. The celebration brought colleagues together for an evening of camaraderie.

**WORKPLACE**



**A FUTURE THAT WORKS**

As end users themselves, the SCA Design team takes pride in crafting people-centric workspaces that empower meaningful interactions. Melding an awareness of evolving workplace requirements with a keen attention to particular organisational needs, SCA delivers spaces that perform well both now and into the future.



**NEWS**  
**Putrajaya Line Phase 2: Up and Running**

ONG&ONG was tasked with executing the Line-wide elevated station blueprint for the design concept, detailed design as well as design implementation of the Putrajaya Line Phase 1 and Phase 2. For this project, the team delivered a blueprint that outlines the design, construction, and operation of this mass rapid transit line. One of the key features of the blueprint is the integration of the MRT Putrajaya Line with other transportation modes, such as buses and taxis.



**PROJECTS**  
**SCA Design Helps ABeam Consulting Find Their Joy!**

SCA has taken the Ikigai concept as inspiration for the design of ABeam Consulting – a consulting firm that helps clients or businesses find their Ikigai. The client's brief was centred on the need to have an interior that reflects cosiness, comfort, and homelike vibes. SCA designed a space where colleagues can connect, collaborate, and thrive by focusing on simplicity, minimising clutter, warm neutral and blue tones, and lots of natural light. For this workspace, SCA delivered a flexible, multipurpose office that maximises space and encourages lateral thinking and creativity. The office also adheres to green practices such as being eco-friendly, resource and energy efficient.

**ENGINEERING**



**SOLUTIONS FOR LIFE**

Our teams at Rankine&Hill are at the forefront of engineering innovation. With decades of experience in the industry, our engineers consistently deliver novel solutions for every challenge. Melding practicality and imagination with sustainability ensures consistent client satisfaction.



- Mechanical
- Electrical
- Civil
- Structural
- Fire Safety
- Environmental



- Building Studies
- Workplace Studies
- Space Planning
- Interior Design
- Project Management
- Sustainability
- Turn Key Solutions





**PROJECTS**  
**INDESIGNLIVE**  
Features Artyzen  
Singapore

Recently, INDESIGNLIVE.Sg - home of architecture and design in Asia Pacific - featured this development that is inspired by local Peranakan culture. The Artyzen Singapore offers a unique take on a contemporary sky villa typology, defined by and imbued with the heritage and history of its site and context. Embracing this unique heritage, Artyzen Hospitality Group worked in partnership with ONG&ONG and Nic Graham & Assoc. to transform this lush property into a luxury vertical oasis.

**NEWS**  
**360 Circle is Out. Download your copy today!**

Anticipating what the future holds is always exciting, simply because it makes us imagine how we'd like our world to be if we had unlimited resources to design it. And as an industry leader, we at ONG&ONG are happy to announce that our annual publication, 360 Circle, is out. In this edition, we explore what the next 50 years could look like through the lens of architecture, urban design, and smart cities. Discover our take on fresh innovations and technological developments as well as how harnessing technology can go a long way in addressing existing challenges and in imagining the cities of the future.

**PROJECTS**  
**Haus on Handy**

Rankine&Hill were engaged to provide M&E consulting services for the Haus on Handy project. The newly completed residential development sits between two green lungs in the city – Fort Canning Park to its south, and Mount Emily Park and the grounds of The Istana to its north. Located at Handy Road adjacent to Orchard Road, Haus on Handy consists of three residential towers between 3 to 10-storeys high with a total of 188 apartment units.

**NEWS**  
**ONG&ONG Malaysia Celebrates Hari Raya**

Festive seasons are a great opportunity for employers and employees to bond over social events and tea. Everyone, regardless of their background, comes together to enjoy some levity and celebrate unity and diversity. The Hari Raya Aidilfitri celebration is no different. Recently, our colleagues at ONG&ONG Malaysia commemorated the joyous occasion. The celebration – which also saw many colleagues bringing traditional dishes – is aimed at promoting multiculturalism within the workplace.

**WAY FINDING**

**IMMORTAL**  
Brand Engagement

**THE RIGHT DIRECTION**

IMMORTAL's wayfinding consultants design and implement systems that enable users of every stripe navigate all manner of developments with ease.

Whether through visual icons, physical markers or digital signage, we deliver user experiences that feel seamless and intuitive.



- Planning and Analysis
- Wayfinding Strategy
- Signage System and Design
- Environmental Graphics
- Placemaking



immortal.com.sg



**NEWS**  
**Our Specialists Collaborate on Parc Meadow @ Tengah**

Two projects in Tengah that are part of a Build-to-Order (BTO) scheme were launched at the end of May. Called Parc Meadow @ Tengah and comprising about 1,980 units, it combines with the Plantation Verge project's 970-odd units to make up more than half of its 5,500 units. The ONG&ONG 360 Solution comprising of Landscape, M&E Engineering, and Project Management teams worked on the project. These new flats being rolled out in Tengah are part of broader efforts to ramp up building to meet the housing needs of Singaporeans.

**INSIGHTS**  
**FoodFab@Mandai Engages ONG&ONG and IMMORTAL**

ONG&ONG and IMMORTAL were appointed to lend their architecture and wayfinding expertise towards the FoodFab@Mandai project. The design intent for this 10-storey building with a total of 47 units is to keep the space looking innovative and modern. The ONG&ONG team devised a design where the industrial façade features perforated steel mesh that is randomly placed to lend the building a striking look while allowing natural light to stream in. As for the wayfinding strategy, IMMORTAL devised a simple concept inspired by the building's architectural elements, such as the materials' colours and unique design features.

**BRAND ENGAGEMENT**

**IMMORTAL**  
Brand Engagement



**ARTFUL APPEAL**

IMMORTAL crafts distinctive designs that elevate brands, delivering signature experiences that convert customers to advocates for life.

We take an all-round approach with clients in identifying and developing their brand identity, value proposition, and strategy to market.

- Market Insight
- Brand Audit
- Brand Strategy
- Brand Expression
- Brand Management
- Environmental Branding



immortal.com.sg



**INSIGHTS**  
**The AEC's Role in Reducing Carbon Emission**

The AEC industry is responsible for a substantial slice of carbon emissions. A considerable part of these emissions can be reduced through mindful choices, sustainable strategies and efficient design. The AEC industry can reduce carbon emissions by implementing energy-efficient designs, integrating renewable energy sources, selecting low-carbon materials, managing construction waste, and pursuing green building certifications among others.



**NEWS**  
**"Building New Worlds in Real Time" Forum by Jicara Media**

Digital twins are opening new doors for the architecture, engineering, and construction (AEC) industry. However, there are obstacles that could impede the widespread adoption of digital twins. To hammer out some solutions, experts including ONG&ONG's Digital Director, Daniels Chandra, gathered at the "Building New Worlds in Real Time" forum. Daniels shared that a shift in mindset, a collaborative effort, and a significant amount of groundwork has to be done before the benefits of digital twin technology can be maximised. He also said that the possibilities and applications of digital twins are vast, holding immense potential to transform the industry.

**PROJECTS**  
**Preview of ONG&ONG-designed Orchard Sophia**

ONG&ONG have been chosen to design the new five-storey condominium Orchard Sophia that is located on Sophia Road in prime District 9. As the site faces Istana Park, for security reasons, the height of the building was restricted to five storeys, presenting an interesting challenge to the architects. With no taller buildings in the vicinity, the project will still grant residents a bird's eye view of Orchard Road.



**PROJECTS**  
**An Office that Loops Agility, Flexibility, and Adaptability**

The Infinity symbol was SCA's inspiration while designing the concept for Hitachi Vantara's office. The project team created a bubble diagram and added programmes according to the flow that would allow for a seamless working and interacting process. Connecting the space to the brand, SCA used red, grey, and blue within the interior for an effect that is timeless, clean, crisp, and bright to reflect the new look of this company. Hitachi Vantara's office is an agile workspace that adapts readily to a fluid, creative work style, tailored to meet the ever-evolving needs of its employees.



**PROJECTS**  
**Fiz Fuses Heritage and Innovation in its Design**

Located in the lively F&B district of Tanjong Pagar, FIZ is a culinary beacon, embodying the rich flavours and architectural legacy of Southeast Asia. ONG&ONG were engaged to design the restaurant and the team delivered one that harmonises iconic temple motifs, monastic simplicity, and elements of earth architecture, all punctuated with retro-futuristic nuances. The design elements form a part of FIZ's narrative, offering an immersive dining journey that intertwines tradition and modernity by using earthy materials such as stone, wood, and terracotta.



**NEWS**  
**ONG&ONG's Group CEO Conferred the SIA Fellow (Life) Membership**

Committed to championing excellence in Architecture and the Built Environment, the Singapore Institute of Architects (SIA) is a professional organisation established in 1963. This year, the Institute celebrated another milestone – its 60th anniversary. ONG&ONG is proud to announce that our Group CEO, Ashvinkumar Kantil was one of the three individuals to be conferred the Fellow (Life) Membership during SIA's annual dinner at the Suntec Convention on 21 August 2023. The event was graced by Mr. Desmond Lee, Minister for National Development and Minister-in-charge of Social Services Integration.

**MANAGEMENT**



**CLARITY FROM CONCEPT TO COMPLETION**

The benefits derived from systematic and pre-emptive planning, strong communication, and collective synergies are priceless when it comes to the successful and timely completion of projects.

Our project management specialists draw from a wealth of experience and skills to realise the best end-to-end solutions for every project.



- Project Management
- Project Development
- Construction Management
- Cost Management
- Place Management



- Construction Design & Build
- Turn Key Solutions
- Contract Works

proj-innovations.com



**PROJECTS**  
**SCA Designs an Envious Office Space**

The Singapore premises is this major social media platform's third office to be established in the Asia-Pacific region and SCA Design was engaged to design the office expansion. Inspired by the vibrancy and communality of the district, the design aims to "bring the outside in" – creating a culture of alfresco and outdoor squares where meaningful interactions take place. SCA studied the different levels of the existing office and designed suitable spatial narratives. In achieving the design intent, focus was placed on the selection of materials to accurately underscore a local flavour.



**INSIGHTS**  
**Daniels Chandra Speaks at AEC Forum**

ONG&ONG's Digital Technology Director, Daniels Chandra, was invited to be a guest speaker at the Transforming AEC from Concepts to Construction with Nvidia Omniverse and Digital Twin Forum. The forum was an opportunity for ONG&ONG to share insights about the latest of AI, Data Science and Visualisation for the Built Environment sector. At the forum the Nvidia Omniverse was introduced as a computing platform that enables individual architects, designers and teams across different geographical locations to develop USD based 3D graphics workflows and applications.



**PROJECTS**  
**ONG&ONG Vietnam Designs Tallest Building in Binh Duong**

ONG&ONG Vietnam was handpicked to lead the Happy One Central project that was conceived to cater to both expats and locals making Thu Dau Mot their home. As the tallest building in Binh Duong, Happy One Central with 40-storeys on each tower offers its residents miles of unrestricted view of the cityscape. Leading and overseeing the Happy One Central project, ONG&ONG also worked with other consultants to devise the masterplan which included exterior architecture, infrastructure, transportation, and interior details while also weaving elements of the local culture into the narrative. The topping-out ceremony took place more than 140m above ground on July 15.

**NEWS**  
**Jafo Asia: A Contemporary Workplace that Exudes a Smart yet Homely Atmosphere**

At 10 Collyer Quay in Singapore sits the Ocean Financial Centre. Within this towering building is the Jafo Asia office designed by ONG&ONG to represent its growth. Placing emphasis on straight, sleek, and well-defined lines, the space superbly balances design and practicality, space, and light, capturing at once the high-end hospitality whilst meeting the various needs of employees. Inspired by the hues of the nature, browns, blues, and greys dominate the space, resulting in an office that is spacious as well as easy on the eyes.

**LANDSCAPING**



**ALWAYS ECO-LOGICAL**

Integral to the built environment, landscaping improves sustainability levels, enabling dynamic and mutually beneficial interplays between urbanites and nature.

Our team is focused on generating positive environmental outcomes for future generations.



- Masterplanning
- Space Planning
- Blue & Green Solutions
- Sustainability
- Playground Design



**NEWS**  
**ONG&ONG Indonesia's CEO Delivers Keynote Speech at the 4th ASEAN Architect Congress themed "Embracing the Future"**

Kurjanto Slamet, CEO of ONG&ONG Indonesia, was a Keynote Speaker at the 4th ASEAN Architect Congress, which was held in Makassar, South Sulawesi, Indonesia from 26 to 29 July. Themed "Embracing the Future," the event brought together many important figures within the architectural sphere in Southeast Asia. Held with the aim of fostering intellectual exchanges, discussions on cross border architecture practice challenges, encouraging and facilitating architects within ASEAN member countries to engage in cross border practices ethically, legally, and professionally, the event was a perfect opportunity for architects to expand their skills and knowledge.



**NEWS**  
**Summitting the Ong Teng Cheong and Ong Siew May Peaks on Singapore's National Day**

A 20-member mountaineering team organised by Ong Tze Boon celebrated Singapore's National Day by climbing the peaks named after the nation's former President and First Lady; the Ong Teng Cheong Peak at 4,743m and the Ong Siew May Peak at 4,451m. Braving temperatures that dipped to -10 degree Celsius, the team reached the Ong Siew May Peak on Aug 7 and then continued to climb the Ong Teng Cheong Peak on Aug 9, where Tze Boon and his team unfurled the Singapore flag at the summit. Tze Boon has formed a team annually since 2016 and climbed the mountain named after his father on National Day. The last time he reached the summit was in 2019 and 2023 is the first time he returned to Kazakhstan after the COVID-19 pandemic.



PROJECTS **Vittoria Cotton Tires Factory by ONG&ONG Thailand Exudes Dynamism**

Vittoria Tires, the Italian brand engaged ONG&ONG Thailand to design its new cotton tire manufacturing plant at Preaksa Industrial Estate, Bangpoo, Thailand. The architecture team was inspired by the Vittoria brand DNA. Rendered in a sophisticated ecru tone, the factory sports a coated steel facade with subtle diagonal slats that visually underscore the brand's innovative approach in developing unique products. Darker grey tones and angular elements anchor the interior spaces, while windows look out upon a lushly landscaped internal courtyard, reflecting biophilic design principles. Credited with creating the most advanced cotton tires in the world, Vittoria Tires is familiar to cyclists the world over.



PROJECTS **ONG&ONG Applies the 360 Solution for Glade**

Woodlands Glade is located at the junction of Woodlands Avenue 9 and Gambas Avenue with the future North-South Corridor running parallel on top of Gambas Avenue. For this project, the 360 Solution was applied and teams from the architecture, landscape, and M&E units were engaged. The teams worked together to seamlessly weave urban connectivity throughout the development and to existing neighbouring precincts. The design of the building facade was inspired by tree branches and matches Woodlands Precinct's "forested" theme.



INSIGHTS **Fostering Community Through People-oriented Design**

Designing a sustainable space requires a holistic approach. Spaces that are genuinely sustainable prioritise the needs, experiences and aspirations of the people using them. Indeed, it is essential to place users at the heart of the project – to observe, engage and design with and for them. Observing people before designing built spaces is essential in creating thoughtful and functional designs to promote positive experiences and interactions. By understanding the movements, preferences, and habits of people, designers create culturally and socially appropriate spaces for the local community.



PROJECTS **Affinity at Serangoon: A Symbol of Innovative, Urban Living.**

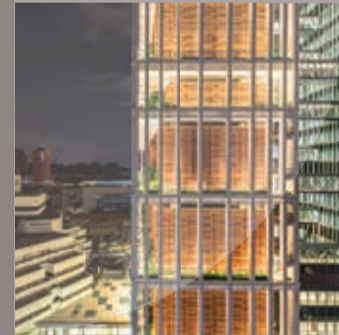
Rankine&Hill were engaged for the Affinity at Serangoon project where they played a pivotal role in ensuring comfort and functionality across the development, that was designed to maximise natural light and ventilation for a comfortable and sustainable living environment. Given Singapore's hot and humid climate, the team were responsible for the design and implementation of the vital HVAC systems. Engineers had to optimise energy efficiency while ensuring effective cooling and air circulation. Additionally, Rankine&Hill were involved in the design of the plumbing and sanitation systems to provide residents with reliable and efficient access to water and wastewater management.



PROJECTS **Rankine&Hill Lends Its Expertise to Parc Canberra**

An executive condominium, Parc Canberra is inspired by the Australian way of living - one that is replete with greenery and a wide range of leisure-related facilities. The nature-inspired residence is imbued with artful contours offering residents a charming outlook and a heightened sense of comfort and opulence. For this development, Rankine&Hill was engaged to design the heating, ventilation, and air conditioning systems, ensuring the safety and comfort of the residents. Other items within the team's purview were the maintenance and filtration systems for the swimming. The team also incorporated energy-efficient designs and renewable energy options to reduce the development's carbon footprint.

LIGHTING



BRIGHTER TIMES AHEAD

Efficient, evocative, and essential - these are the qualities our lighting specialists address with every space.

Our lighting solutions augment users' view of the environment, directing the eye towards, across, and beyond each plane and perspective.



- Architectural Lighting
- Equipment Cost Control
- Operational Cost Control
- Lux Level Calculations
- Lighting Controls
- Lighting Audits



NEWS **Dwelling III from the Anthology Series is Out Now!**

The answer to what makes a house a home is personal and differs from one person to another. For some, it could be the trinkets collected from travelling around the world, while for others it is the time and effort spent on furnishing their residence. Whatever the reasons, home is where you spend time with family, friends, and loved ones and it needs to be a sanctuary where you can retreat from the hustle and bustle. ONG&ONG is thrilled to announce that Dwelling III from our Anthology series is now available. Featuring private residences and gated estates, the collection within these pages will inspire you to refurbish your home. Download your copy today.



NEWS **IMMORTAL Devises Environmental Branding & Wayfinding Elements for Kallang Park Connector**

The first phase of a seamless pedestrian and cycling route from Bishan to the city opened to the public on October 5. Works completed included the addition and enhancements of underpasses and signalised crossings in the area. For this project, IMMORTAL devised environmental placemaking elements for the new underpasses that add aesthetic appeal and reference the historical elements of the river. The team based the idea for the thematic environmental graphics upon the retelling of the river's timeline. Flooring beside the seating area was designed with wavy patterns and copper inlays of fish found in the Kallang River while the underpass murals depict scenes along the Kallang River over the decades.

INTERIOR



REFINED BY DESIGN

Spaces that excite the senses, that soothe the soul, or fire the imagination - this is the alchemy of interior design.

From residential to commercial, sacred to civic and more, our spaces are designed to inspire the mind and empower function in equal measure.

- Advisory & Consultancy
- Feasibility Study
- Master Design Guidebook
- Space Planning
- Test Fit
- Turn Key Solutions



**ONG&ONG**  
group

In the last few months, can you recall how often you raised the issue of how hot or cold your office is with your colleagues? Many office-based employers would agree that the biggest battle in commercial buildings is the fight over the thermostat. Not only do people have different tolerances for hot and cold, but different parts of buildings have different temperature ranges depending on sun exposure, shade, and the age and efficiency of the building's heating, ventilation, and air conditioning.

But with the emergence of smart technology, we are not just talking about controlling temperatures alone. We are talking about smart buildings that are characterised by the seamless integration of advanced technologies, fostering sustainability, efficiency, and enhanced occupant experience. These buildings leverage cutting-edge solutions to create intelligent, responsive, and environmentally conscious environments.

But the question remains on how we will get there, and the answer lies in data and connectivity.

In the context of smart buildings and the broader digital landscape, people can be treated as data points through the collection and analysis of their behaviours, preferences, and interactions. As individuals engage with various technologies and systems, they generate data that can be used to derive insights, improve services, and enhance personalisation. Occupants become data points through their interactions with the built environment. Sensors and IoT devices capture data related to occupancy, movement, and preferences. For instance, a smart thermostat learns user behaviour and temperature preferences, using these data points to create a personalised and energy-efficient climate control system within an office.

To enable an entire building to seamlessly and cohesively work, smart buildings need to be highly connected with an extensive network of sensors and Internet of Things (IoT) devices. These sensors will monitor various aspects of the building in real-time,

including occupancy, temperature, lighting, and air quality. A smart building uses a combination of technologies such as software and sensors to automate building management. The building data are tracked over time so the software can adjust its changes to fit with occupancy or seasonal changes.

The next question in your mind is can this be done? And the answer is a resounding YES. In fact, as you read this, ONG&ONG has embarked on a project that will bring to life the future of smart buildings in Singapore.

Known as BeyondX, it is envisioned as a hub of innovation where like-minded individuals come together. The idea was to create a narrative where there is an ecosystem in place to connect entrepreneurs to revolutionary technology partners, developers, investors, and operators, to explore unparalleled transformational opportunities and to redefine how the world interacts with its built environment. In simple words, BeyondX is meant to CONNECT business with the right technologies and support systems, COMMUNICATE ideas to the right partners, investors, and decision makers, and CO-CREATE an ever-evolving platform to bring together entrepreneurs, technologists, investors, and government agencies. Together, we can push forth great ideas that change the way we interact with the world.

Our traditional offices are changing and so too are the people working in it. IoT is presenting new opportunities for creating, operating and servicing our facilities and is leading the way for new business value delivery.

Stay tuned as we will be unveiling more exciting news on BeyondX in the upcoming months as our hub progresses from a seed of thought to a realised venue.



NEWS  
**360**

Chief Editor  
Ashvinkumar Kandiah  
Managing Editor  
Stanley Tan  
Creative Director  
Stanley Tan  
Contributors  
Chiang Hui  
Emeric Lau  
K. Vatsala  
Designers  
Goh Lip Sen  
Ryan Lim  
June Lee  
Printer  
Oxford Graphic  
Printers Pte Ltd

BI-ANNUAL NEWSLETTER • JANUARY 2024 • MCI (P) 027/07/2023

360 NEWS is published by ONG&ONG Group Pte Ltd. All rights reserved. No part of this newsletter may be reproduced without the permission of ONG&ONG Group Pte Ltd. Opinions expressed in 360 NEWS are those of the writers and are not necessarily endorsed by ONG&ONG Group Pte Ltd. ONG&ONG Group Pte Ltd accepts no responsibility for unsolicited manuscripts, transparencies or other material.

Address all editorial and business correspondence to

ONG&ONG Group Pte Ltd  
Corporate Communications Department  
510 Thomson Road  
#11-00 SLF Building  
Singapore 298135

You are receiving this newsletter because you have been involved with ONG&ONG in the past. If you feel you are receiving this newsletter in error, please email [corpcomms@ong-ong.com](mailto:corpcomms@ong-ong.com) to unsubscribe from our mailing list.

In line with our corporate strategy of sustainable design, this newsletter is printed on sustainably sourced paper.

**ONG&ONG Group Pte Ltd**

510 Thomson Road,  
#11-00 SLF Building,  
Singapore 298135  
t +65 6258 8666  
f +65 6259 8648

**ONG&ONG Pte Ltd**

510 Thomson Road,  
#11-03 SLF Building,  
Singapore 298135  
t +65 6258 8666  
f +65 6259 8648

**PT ONG and ONG**

Grha Niaga Thamrin 1st Floor Unit A1  
Jl. K.H. Mas Mansyur  
Kebon Melati, Tanah Abang  
Jakarta Pusat 10230, Indonesia  
t +62 21 2139 2269  
f +62 21 2139 2309

**ONG&ONG 360**

**Consultancy Sdn Bhd**  
Unit IA-07, Blok IA, Plaza Sentral,  
Jalan Stesen Sentral 5,  
50470, Kuala Lumpur.  
t +60 3 2272 2360  
f +60 3 2272 3360

**ONG&ONG Design LLC**

Residence 60, Unit 13-07, 4th Khoroo,  
15th Khoroolol Peace Auv 8B,  
Ulaanbaatar 13345, Mongolia  
t +976 7575 6515  
f +976 7575 6525

**ONG&ONG Limited**

No (45/5), C2, Box Kabaraye,  
9th Ward, Mayangone Township,  
Yangon, Myanmar

**ONG&ONG Design Co., Ltd**

75 / 50 Level 15, Richmond Office  
Building, Soi Sukhumvit 26, Klongtan,  
Klongtoey, Bangkok 10110, Thailand  
t +66(0) 2 258 5915

**ONG&ONG Co., Ltd**

Unit 1003B, Level 10  
Centre Point Building,  
106 Nguyen Van Troi Street  
Ward 8, Phu Nhuan District  
Ho Chi Minh City, Vietnam  
t +84 28 6285 6178 / +84 28 6285 6179  
f +84 28 6285 6169  
[www.ong-ong.com](http://www.ong-ong.com)

**Project Innovations Pte Ltd**

510 Thomson Road,  
#11-03 SLF Building,  
Singapore 298135  
t +65 6255 3966  
f +65 6259 8648  
[www.proj-innovations.com](http://www.proj-innovations.com)

**Project X:ion Pte Ltd**

510 Thomson Road,  
#11-03 SLF Building,  
Singapore 298135  
t +65 6255 3966  
f +65 6259 8648  
[www.proj-xion.com](http://www.proj-xion.com)

**Rankine&Hill**

**(Singapore) Pte Ltd**  
510 Thomson Road,  
#11-03 SLF Building,  
Singapore 298135  
t +65 6278 9588  
f +65 6259 8648

**Rankine&Hill**

**(Vietnam) Co., Ltd**  
Unit 1003B, Level 10, Centre Point  
Building 106, Nguyen Van Troi Street,  
Ward 8, Phu Nhuan District,  
Ho Chi Minh City, Vietnam  
t +84 28 6285 6178 / +84 28 6285 6179  
f +84 28 6285 6169

**Rankine&Hill**

**(Malaysia) Sdn Bhd**  
Unit IA-07, Blok IA, Plaza Sentral,  
Jalan Stesen Sentral 5,  
50470, Kuala Lumpur.  
t +60 3 2272 2360  
f +60 3 2272 3360

**Rankine&Hill**

**(Myanmar) Limited**  
No (45/5), C2, Box Kabaraye,  
9th Ward, Mayangone Township,  
Yangon, Myanmar  
[www.rankine-hill.com](http://www.rankine-hill.com)

**SCA Design Pte Ltd**

510 Thomson Road,  
#11-03 SLF Building,  
Singapore 298135  
t +65 6253 4886  
f +65 6259 8648  
[www.sca-design.com](http://www.sca-design.com)

**IMMORTAL**

**The Design Station Pte Ltd**  
510 Thomson Road,  
#11-03 SLF Building,  
Singapore 298135  
t +65 6227 9406  
f +65 6259 8648  
[www.immortal.com.sg](http://www.immortal.com.sg)

# Vision

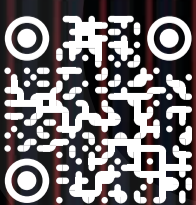
Experience Beyond

# Purpose

To Improve the World in which We Live

# Role

To Enhance the Well-being of Inhabitants through Excellence in Sustainable Design



[group.ong-ong.com](http://group.ong-ong.com)

SINGAPORE  
INDONESIA  
MALAYSIA  
MONGOLIA  
MYANMAR  
THAILAND  
VIETNAM



Catch up with the ONG&ONG Group by accessing our past issues here

ONGONG360

ONGONG360

@ONGONG\_360

ONG&ONG

SCA

SCADESIGN360

@SCADESIGN360

SCA DESIGN PTE LTD

IMMORTAL

IMMORTAL SINGAPORE

@IMMORTAL\_SINGAPORE

IMMORTAL

RANKINE&HILL

RANKINE&HILL