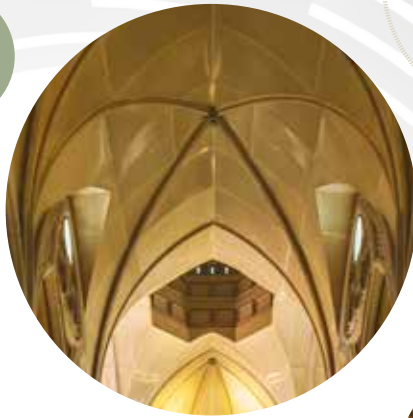




Civic II

AN ANTHOLOGY OF
BEST IN CLASS PUBLIC SPACES



ONG & ONG
group

EXPERIENCE
BEYOND.



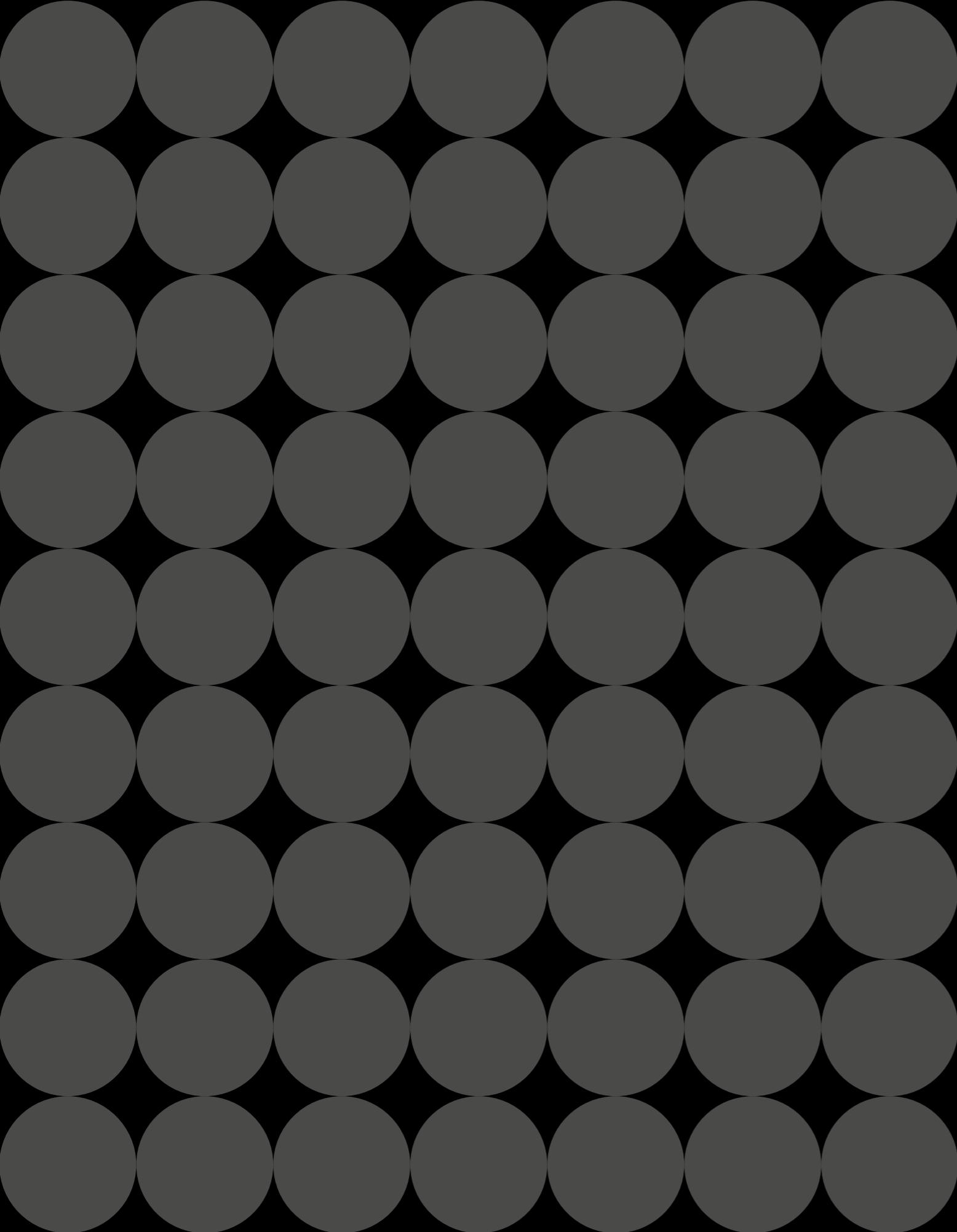
Civic II

AN ANTHOLOGY OF
BEST IN CLASS PUBLIC SPACES



ONG & ONG
group

EXPERIENCE
BEYOND.



Live, work or play, our purpose-built public spaces puts user needs front and centre. Through meticulous planning and thoughtful design, we create the perfect infrastructure, providing families with everything they require for a meaningful life.

We believe that sustainable urbanisation does not mean making a compromise.

This is CIVIC II.

Active Retirees.
Caring Parents.
Plucky Kids.

Meet the three-generation family from Singapore – Bernard, Betty, David, Donna, Daniel and Shannon are model urban dwellers reaping the benefits of a well-planned city.

Aside from the comfort of their smart-tech, high-rise city home, the family has come to appreciate all the amenities at their doorstep. Join them as they share how they spend their days: at school, work, commuting, checking in on their cherished relatives and friends, and taking the occasional jaunt to nearby countries.



BEST IN CLASS

A wholesome lifestyle for all in the family, made possible with outstanding public spaces for every purpose.

INSTITUTIONAL SPACES



12 AMERICAN INTERNATIONAL HOSPITAL
HCMC, VIETNAM



18 GATEWAY THEATRE
SINGAPORE



24 HEARTBEAT@BEDOK
SINGAPORE



30 BEDOK PUBLIC LIBRARY
SINGAPORE



36 DEMENTIA-FRIENDLY WAYFINDING AT KHATIB CENTRAL & CHONG PANG CITY
SINGAPORE



48 JURONG FIRE STATION
SINGAPORE



54 NOVENA CHURCH
SINGAPORE

72 MRT DOWNTOWN LINE (DTL)
SINGAPORE

TRANSPORTATION INFRASTRUCTURE



90 JAKARTA MRT LINE
INDONESIA

102 KUALA LUMPUR-SINGAPORE HIGH SPEED RAIL (HSR)
MALAYSIA/SINGAPORE



EDUCATIONAL CAMPUSES



140 SMU CAMPUS GREEN
SINGAPORE

124 NEXUS INTERNATIONAL SCHOOL
SINGAPORE



INSTITUTIONAL SPACES

- 012 — American International Hospital
- 018 — Gateway Theatre
- 024 — Heartbeat@Bedok
- 030 — Bedok Public Library
- 036 — Dementia-friendly Wayfinding at Khatib Central & Chong Pang City
- 042 — THK Home for the Disabled
- 048 — Jurong Fire Station
- 054 — Novena Church
- 060 — Singapore General Hospital Emergency Medicine Building
- 062 — Nursing Homes

TRANSPORTATION INFRASTRUCTURE

- 072 — MRT Downtown Line (DTL)
- 090 — Jakarta MRT Line
- 098 — MRT 2 Sungai Buloh-Putrajaya (SSP) Line, Malaysia
- 102 — Kuala Lumpur-Singapore High Speed Rail (HSR)
- 108 — Choa Chu Kang Bus Interchange
- 112 — Seletar and Ulu Pandan Bus Depots
- 118 — Charge+

EDUCATIONAL CAMPUSES

- 124 — Nexus International School
- 132 — Tanglin Trust School
- 140 — SMU Campus Green
- 146 — PERI Upgrading Programme



Despite being retirees, Bernard and his spouse Betty lead an active life. As a former firefighter, Bernard often visits his associates at Jurong Fire Station. The couple frequently catches performances at Gateway Theatre and visits the integrated community complex, Heartbeat@Bedok to browse the books at the Bedok Public Library. Betty also attends weekly services at Novena Church for her spiritual needs.

More recently, they have started to take an interest in the lives of their peers, leading them to explore social work options at various nursing homes. They are eager to share pointers for living well, including scheduling medical checkups while on holiday in Vietnam.

Bernard & Betty



**Bernard & Betty's
Best in Class Picks**

American
International Hospital

Gateway Theatre

Heartbeat@Bedok

Bedok Public Library

Yishun Nature Park

Dementia-friendly
Wayfinding at Khatib
Central & Chong Pang City

THK Home for the Disabled

Jurong Fire Station

Novena Church

Singapore General Hospital
Emergency Medicine Building

Nursing Homes

Ang Mo Kio

Choa Chu Kang

Geylang East

St Joseph's



institutional spaces



Ho Chi Minh City, Vietnam

American International Hospital

Interior Design

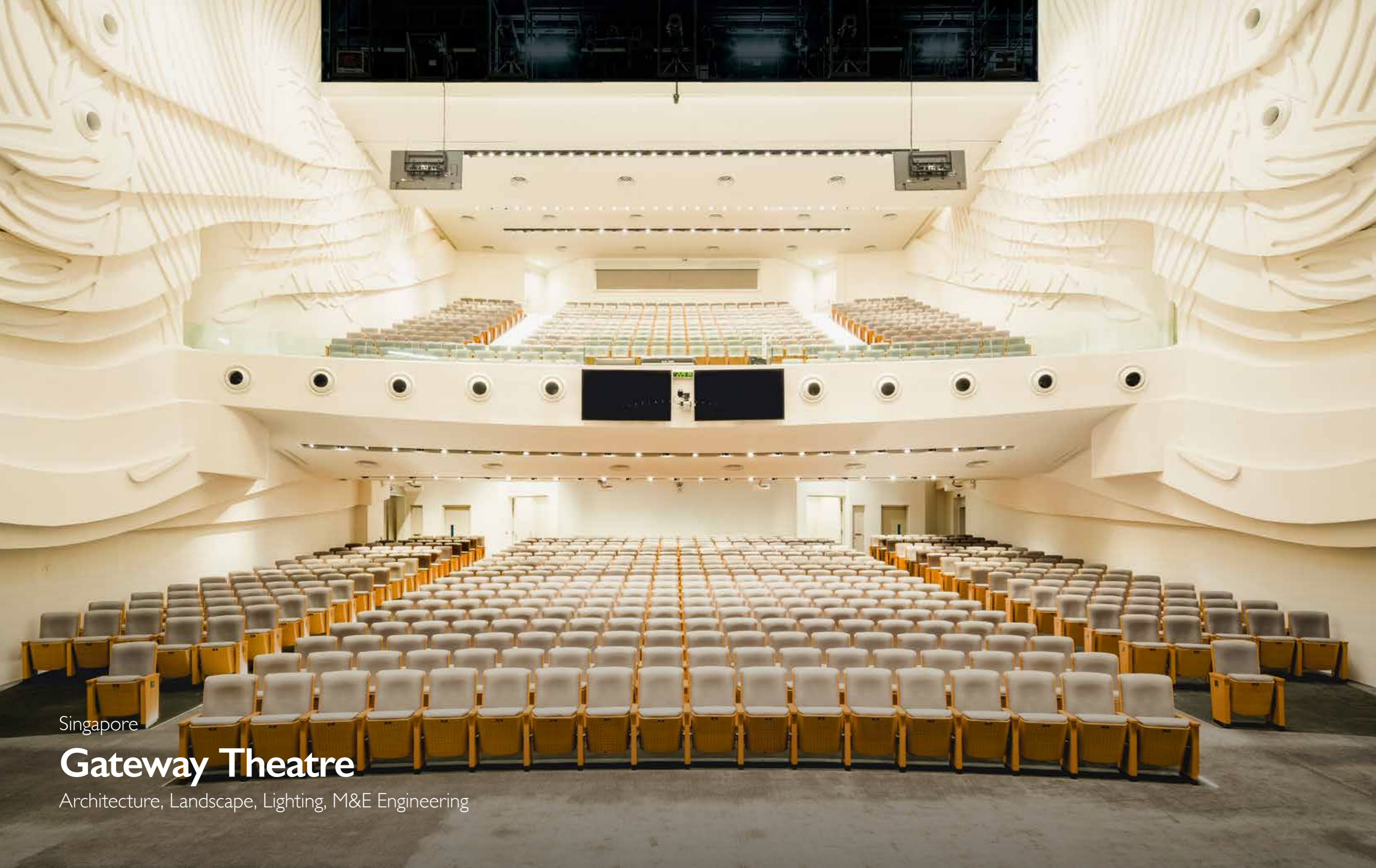


Reputed as one of the first hospitals in Vietnam to be designed and operated in adherence to world-class standards, the American International Hospital (AIH) accommodates a total of 120 beds across 10 storeys and is equipped with advanced medical facilities, providing quality healthcare services in Ho Chi Minh City's fast-developing urban enclave, District 2.

The hospital's elegant interiors were designed with the patients' best interests and well-being in mind, evoking a sophisticated ambience reminiscent of a five-star hotel. Taking cues from the verdant backdrop of the hospital grounds, the walls and furniture in the public areas adopt a nature-inspired colour palette, basked in warm, soothing lighting. Marbled surfaces add sheen and a glossy charm that complements the natural allure of the décor, while wood finishes impart an organic feel throughout the space. The overall aesthetic exudes an atmosphere of calm and comfort, creating a rejuvenating environment that benefits the psychology of the patients and promotes recovery.







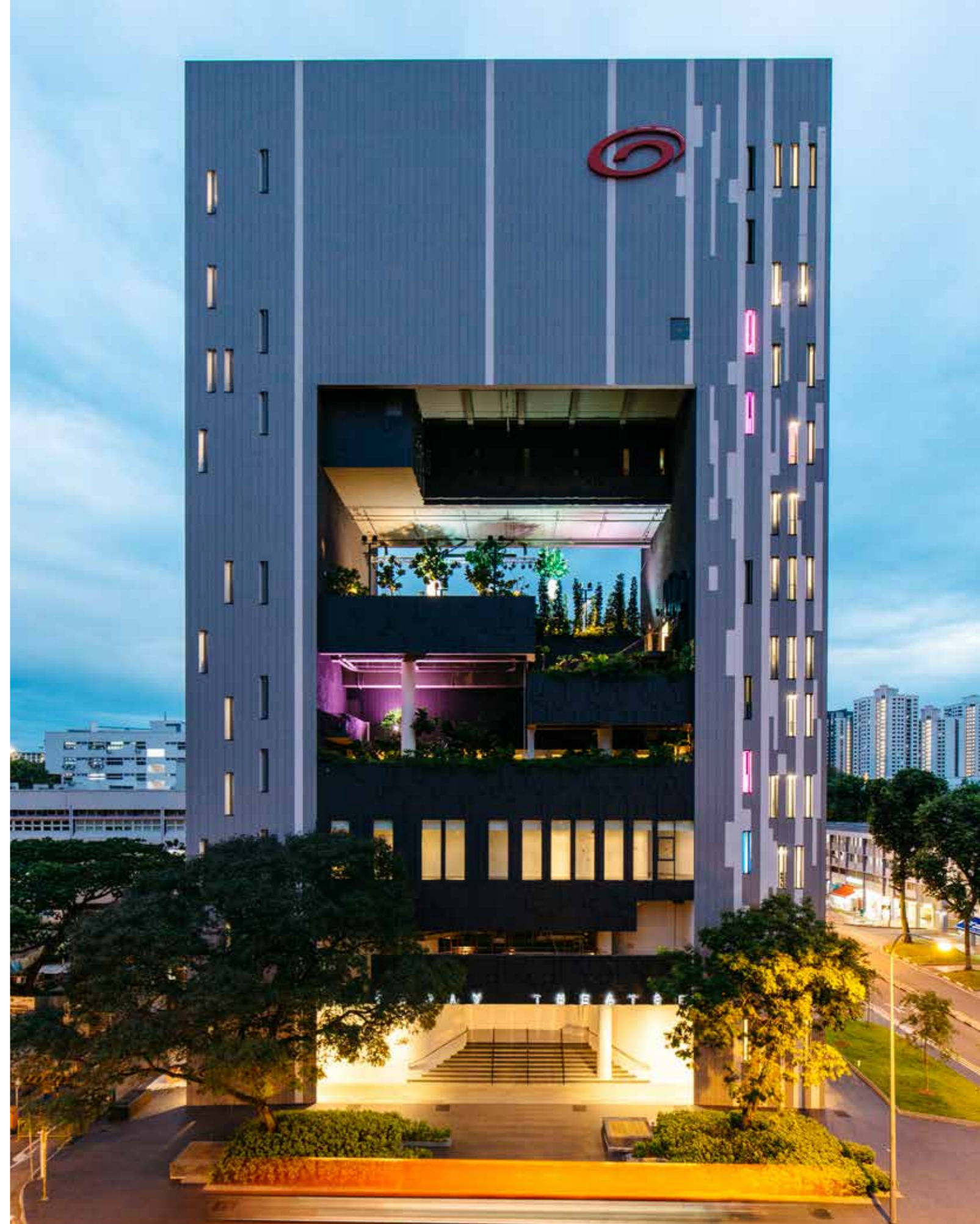
Singapore

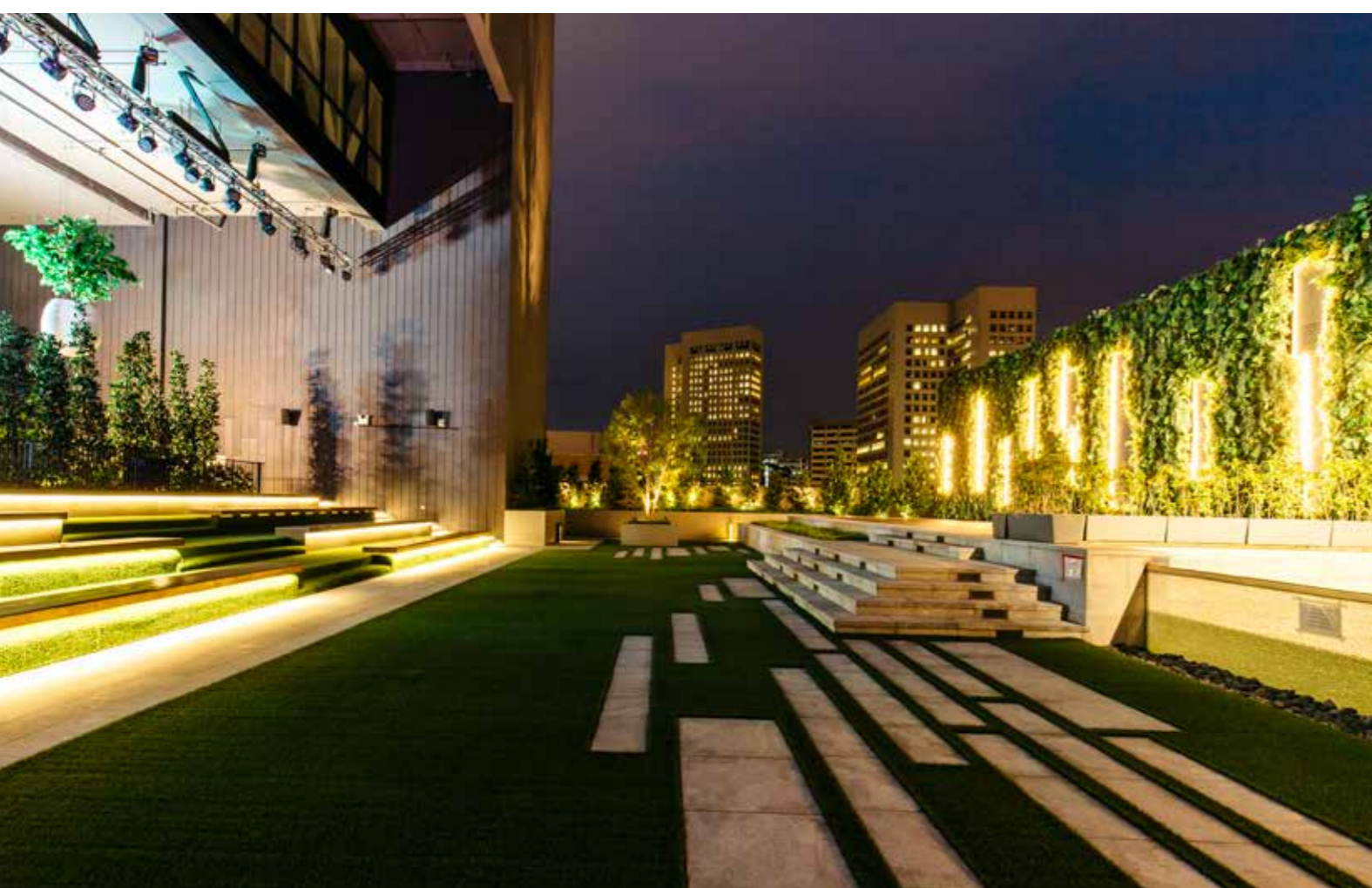
Gateway Theatre

Architecture, Landscape, Lighting, M&E Engineering



Overlooking the streets of Bukit Merah, Gateway Theatre is a community-centric venue that hosts multiple performance spaces, with the main auditorium taking centre stage as the building's core component. Elements of nature are infused into the architecture – a large aperture in the centre of the building's unique facade is populated with cascading greenery, inviting a closer look that reveals pockets of landscaped garden terraces to mitigate the large, linear scale of the block and provide visual relief as well as a sanctuary for momentary retreat.





The theatre is not only home to spacious performance halls, but also serves as an open space that encourages community interaction, with an emphasis on inclusive participation. Therefore, each floor is creatively designed to be accessible to the general public. Positive and fluid spatial relationships between the performance and community spaces also culminate in an avenue for exploration and engagement through myriad performing arts activities and experiences, fulfilling its social purpose as a neighbourhood nucleus.



Singapore

Heartbeat@Bedok

Architecture, Landscape, Lighting, M&E Engineering



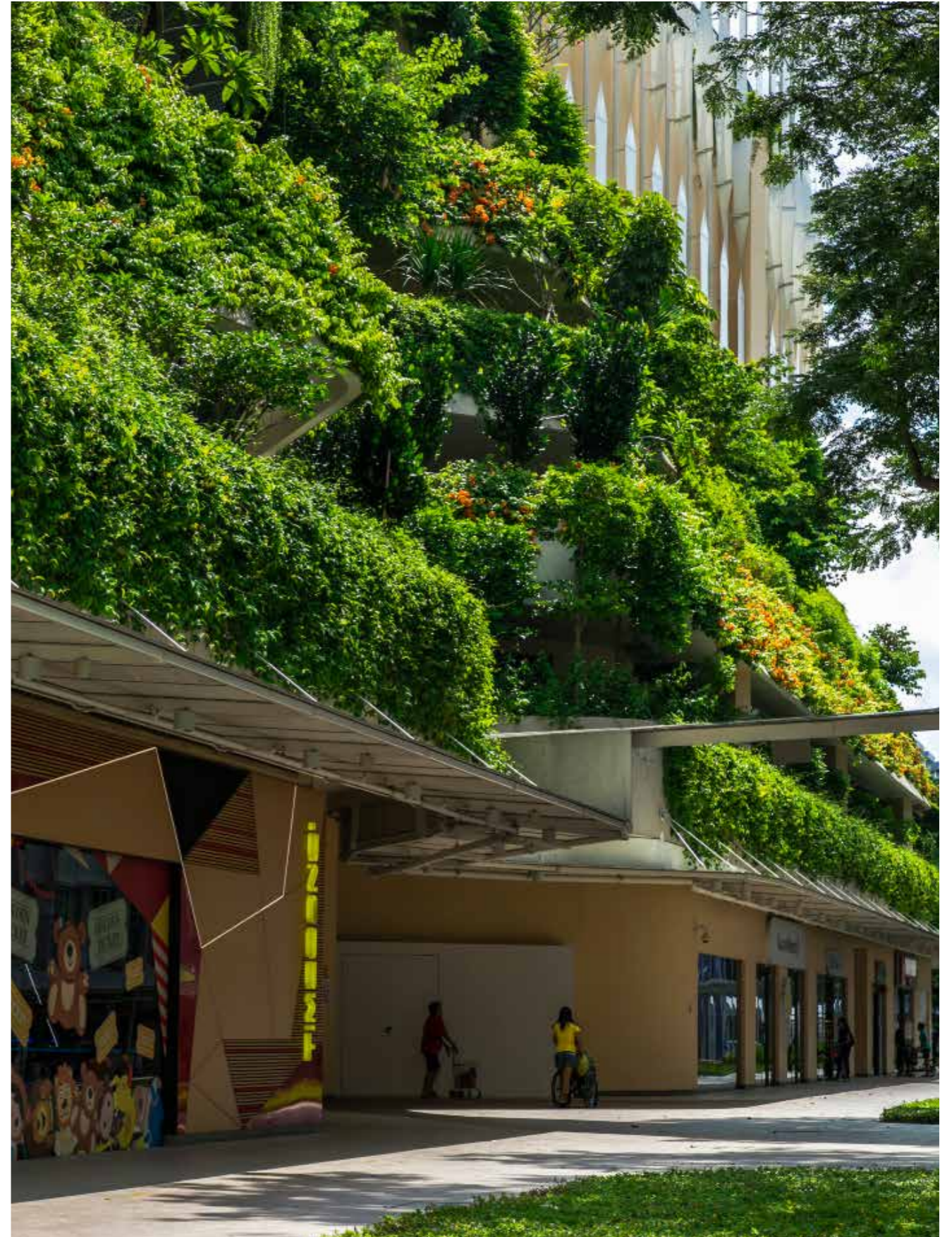
As part of the Singapore Housing Development Board's "Remaking Our Heartland" initiative to rejuvenate Bedok Town Centre, Heartbeat@Bedok was conceptualised as an integrated civic hub with a multitude of amenities catering to the local community, from healthcare clinics and a community club to a sports and recreation centre, a public library and a senior care centre. Lush foliage cascades over its facade, forming terraced green walls that resemble an extension of the serene landscape of the East Coast vicinity.





Besides the enveloping mass of greenery that plays a part in lowering the temperature within the building, the seven-storey complex also benefits from other “green” characteristics incorporated into its architecture. The public spaces optimise natural ventilation by adopting a passive cooling design that facilitates wind flow throughout the building, preserving a sustainable internal microclimate and saving on air-conditioning costs without compromising on comfort. Efficient resource management is practised to reduce energy consumption, including installing rainwater systems to conserve water usage, as well as Brise Soleil elements that mitigate the tropical heat and solar radiation.

The strategic arrangement of facilities and spatial planning focusing on users' needs enable easy navigation. Functional spaces are located on lower floors, while a naturally ventilated public atrium lined with retail outlets and restaurants provides an informal gathering space for nearby residents. The careful selection of unobtrusive, non-glare lights for the swimming pools and tennis courts protects residents from the adverse impact of light spill. ONG&ONG collaborated with URBNarc to design interior spaces that enhance the user experience. As the name suggests, Heartbeat@Bedok was envisioned to be the nucleus of a vibrant heartland community, situated in the heart of HDB-led efforts to revive the mature Bedok estate. Every detail is given due attention across all aspects in the design of this community hub, a landmark project almost four years in the making.





Singapore

Bedok Public Library

Architecture, Interior Design



Located in the heart of the integrated civic hub Heartbeat@Bedok, the Bedok Public Library adopts a contemporary, nature-inspired theme within its walls, inspired by elements from the classic novel, *Alice's Adventures in Wonderland*, as well as the "library in a park" concept.

With a floor plan spanning two levels, the library consists of an array of facilities to cater to a diverse demographic, fostering a conducive and enjoyable reading atmosphere for all users. Desk lights, large print services, handrails and electronic magnifiers are installed for the convenience of seniors, while the upper floor appeals to the young with whimsical yet functional furnishings such as placemark mushrooms and accessible, burrow-like bookshelves.





Furthermore, spaces within the library have been strategically designed to suit different requirements, ranging from partitioned rooms with larger tables to facilitate group discussions, to smaller, private nooks and corners for quiet reading. The library's user-friendly and adaptable configurations enable easy navigation, consolidating its significance as an enduring third space for the community.

ONG&ONG worked with URBNarc on designing the interiors for this readers' retreat. The recurring theme of nature is reinforced across the library with green-coloured carpets and furniture, in addition to floral motifs painted on the walls. Long stretches of wall-to-wall windows allow for natural light to permeate into the building, complementing the illumination provided by interior lighting fixtures.





Singapore

Dementia-Friendly Wayfinding at Khatib Central & Chong Pang City

Environmental Wayfinding



Other features of the wayfinding project include super-sized graphic walls and pillar signage that incorporate directional elements, universal icons, as well as stencilled symbols of pineapples, tropical fish, rubber trees, farmers and Chinese gateways chosen for their significant association with local history. These simple yet distinctive visual cues serve as visual anchors for clear identification by colour zone and are positioned at common areas such as lift lobbies and stairwells. In addition, directional signage on aluminium panels were integrated with concrete seats that double as resting sites for senior residents. The signage system was applied seamlessly to the existing infrastructure, adopting a community-friendly approach that prioritises the well-being of the elderly demographic.





Singapore

THK Home for the Disabled

Architecture, C&S Engineering, M&E Engineering

Located in Sembawang, the THK Home for the Disabled provides custodial and institutional care to adults with disabilities. The residential care facility is capable of accommodating 180 residents and 80 nursing staff, providing a safe and homely environment to cater to the needs of individuals with intellectual or developmental impairments such as autism spectrum disorder (ASD), or other secondary disabilities such as hearing or visual impediments.





The building is structured in a way that facilitates the sequential progression from public spaces into its more private confines, besides utilising a mix of large and small spaces – the former for conducting events and activities; the latter for residents to seek refuge in. The interiors are thoughtfully designed and the rooms are naturally lit and well ventilated to create a serene atmosphere conducive to the well-being of the residents. Elevators and staircases are strategically positioned to complement shared amenities such as the multipurpose hall and nursing facilities, allowing for easy accessibility and navigation.

Furthermore, the inclusion of communal breakout spaces such as an open courtyard and lounge areas aim to cultivate safe avenues for socialising whilst promoting bonding among the residents. Private and internal gardens are also incorporated as a conduit to nature and to establish a connection between the indoor and outdoor spaces





Singapore

Jurong Fire Station

Architecture, C&S Engineering, M&E Engineering



CR: SCDF

Relocated from its previous site at Boon Lay, the Jurong Fire Station (JFS) was built anew with improved safety features, consolidating its significance as an essential public institution. Instantly recognisable by its brick-red exterior, the five-storey facility serves the Jurong residential estate and nearby industrial plants, supported by structural enhancements including public road extensions and a cul-de-sac leading to the building, as well as the installation of Singapore's pioneering fireman's slide to boost efficiency among emergency services personnel while ensuring their safety.



The upgraded facility is notably larger than its former iteration, with the allocation of a designated space for emergency preparedness training. Environmentally-friendly construction materials and design strategies were also incorporated into the architecture to facilitate the implementation of sustainable, energy-efficient systems that have earned it a reputation as an innovative green building.







Singapore

Novena Church

M&E Engineering



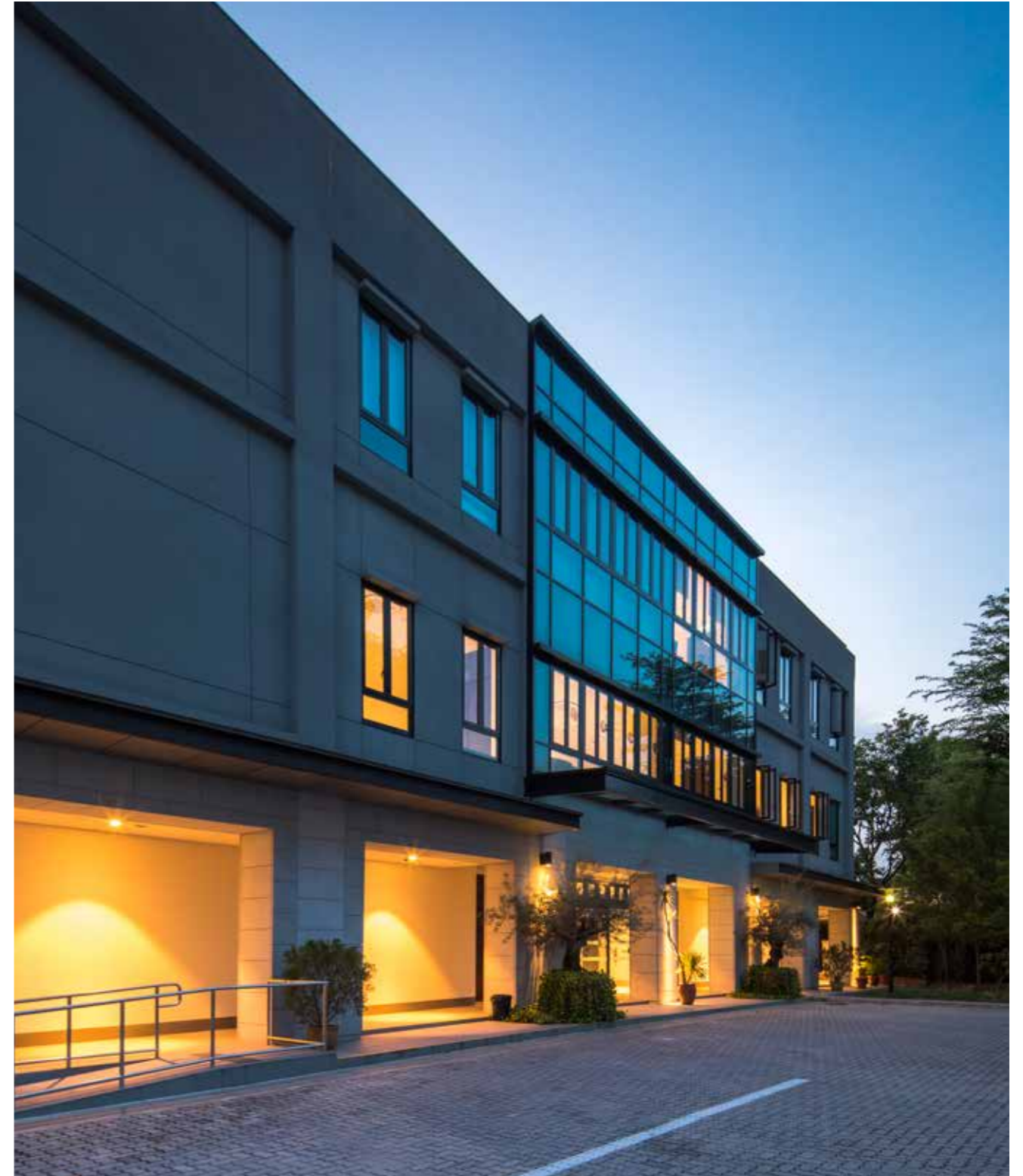
Regarded as one of Singapore's most iconic places of worship, this church sits along Thomson Road and has a history of more than half a century since its completion in 1950. For the church's renovation project, CGN Architects contributed to the building's design, drawing inspiration from the Gothic style whilst updating the premises to better suit contemporary sensibilities.

Meanwhile, the M&E engineering undertook careful planning to ensure that the church's key components and structures are preserved and to introduce new elements in a way that kept the architectural integrity of the original site intact. The revamping process saw the installation of fire protection sprinklers and comprehensive air-conditioning systems for greater safety and comfort, as well as the addition of a new prayer hall and a flower dome. The new air-conditioning system disperses more than cool air; a scent called Aroma Di Novena is diffused through the vents to infuse the space with fragrant notes of frankincense, rosemary, lavender and citrus.





The restored church also includes a new section with a congregational capacity of 1,500 and a new three-storey building housing a 200-seater auditorium, a basement canteen and underground parking bays. Besides that, interior ventilation was improved in full compliance with SCDF emergency safety requirements. In essence, the engineers strove to align the project's technical details with the architect's design blueprint, resulting in a renewed structure with multiple enhancements befitting the church's purpose as a communal space for spiritual fulfilment and fellowship.





Singapore

Singapore General Hospital Emergency Medicine Building

Project Management

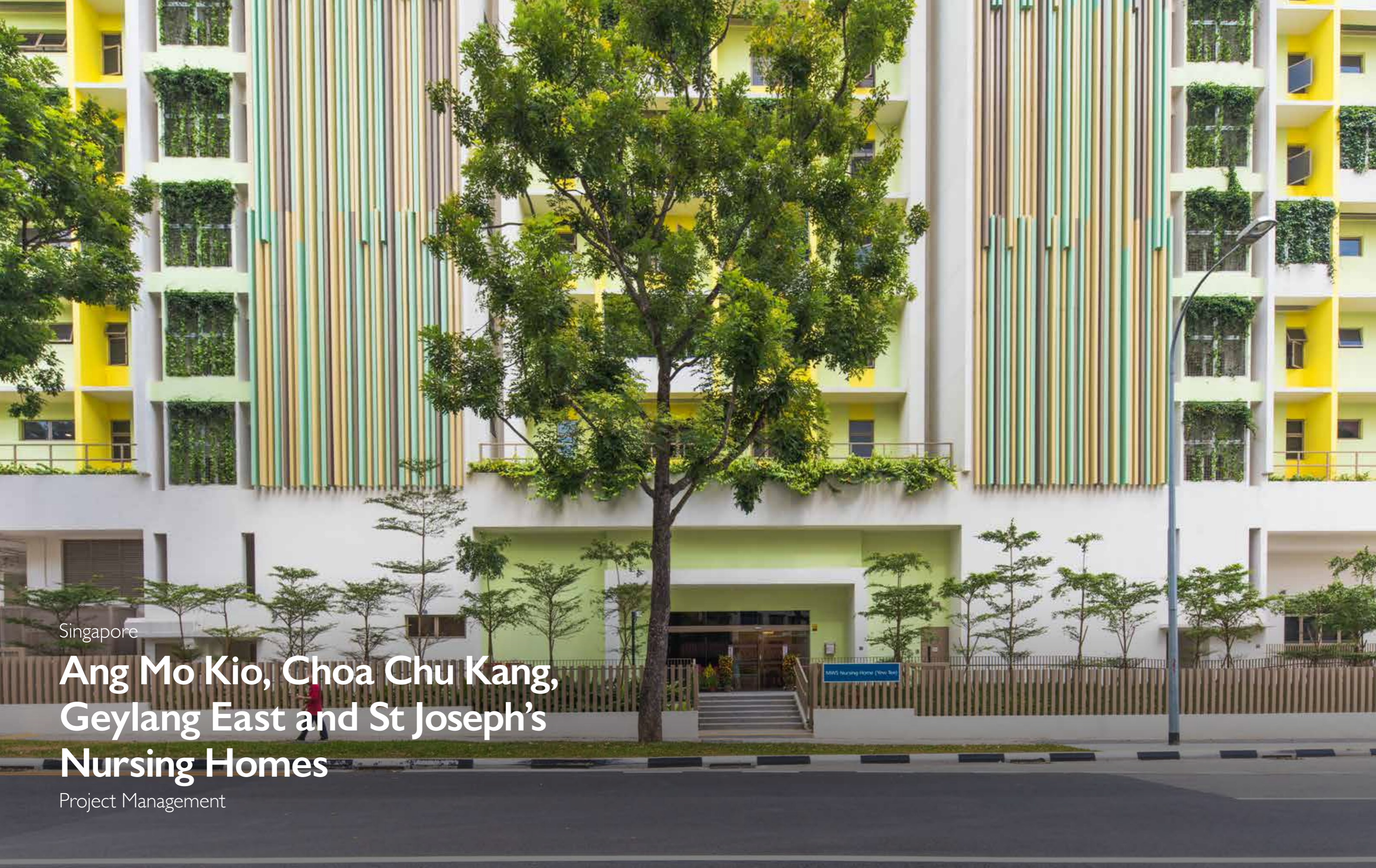


The new Emergency Medicine Building in the Singapore General Hospital (SGH) Campus, designed by RDC Architects and located along Jalan Bukit Merah, serves to better manage patients with emergency conditions. It is equipped with a comprehensive range of facilities and services, and allows easy access to the expertise of various healthcare disciplines within the SGH Campus, enabling timely and coordinated care for patients.

To enhance the emergency facility's capacity to expedite treatment for critical casualties, it is connected to the main SGH buildings with convenient access to diagnostic and interventional facilities such as Magnetic Resonance Imaging (MRI), operating theatres, the burns centre and acute medical wards. Moreover, the building includes a Hospital Decontamination Station (HDS) to minimise patient exposure to hazardous substances in the event of mass casualty incidents.

Patient-centric emergency care is a major consideration in the Emergency Building's design, leading to the integration of purpose-built features such as cubicles in the Critical Care area to provide more privacy to patients. The structure of the building is also thoughtfully planned to facilitate efficient patient transfers, while at the same time reducing unnecessary movements.

As the SGH continues its important role in responding to emergency incidents and healthcare crises, the Emergency Building supports the SGH's functions in providing holistic care that caters to the needs of patients from admission to discharge. The facility is poised to elevate the healthcare standards of the SGH Campus, ensuring that it is well prepared to serve the nation in times of crisis.



Singapore

Ang Mo Kio, Choa Chu Kang, Geylang East and St Joseph's Nursing Homes

Project Management



Singapore's ageing population has prompted a growing demand for nursing homes that offer specialised care to senior citizens who require assistance with day-to-day living. The development of four nursing homes across the island – situated in Ang Mo Kio, Choa Chu Kang, Geylang East and Jurong West (St Joseph's) respectively – aims to fulfil this need with infrastructure that accommodates aged care facilities as well as professionals trained in providing comprehensive care and personalised attention to the elderly in hopes of easing the ageing process.

Each of the nursing homes serves hundreds of residents in multi-storey buildings furnished with adequate beds and wards to ensure the comfort, privacy and safety of occupants in a homely environment. The homes are designed to incorporate ample space for recreational activities to encourage interaction and stimulate engagement among residents. Easy access to a host of facilities and services such as dining areas, activity rooms and rehabilitative programmes supports the seniors in maintaining overall well-being and improving their quality of life.

The nursing homes are staffed by competent caregivers committed to caring for the elderly, attending to the residents in varying capacities from providing companionship to seniors without dependents to intensive care for the bedridden or wheelchair bound. These aged care establishments are instrumental in enabling the elderly to spend their twilight years with dignity and lead a full life, while promoting ageing in place and integration with the community.



Ang Mo Kio Nursing Home

Operated by Ren Ci, this nursing home houses more than 600 beds, arranged in small clusters to ensure efficient management of space and comfort for the seniors. The residents share a living space, activity and dining areas in a homely, supportive environment that facilitates activities of daily living and promotes interaction.



Choa Chu Kang Nursing Home

Dedicated to the holistic well-being of seniors, this nursing home – under the purview of Methodist Welfare Services – caters to residents who require assistance in their day-to-day activities by providing comprehensive care, in addition to organising therapeutic, rehabilitative, social and recreational activities to guide the seniors in staying healthy, active and mobile.





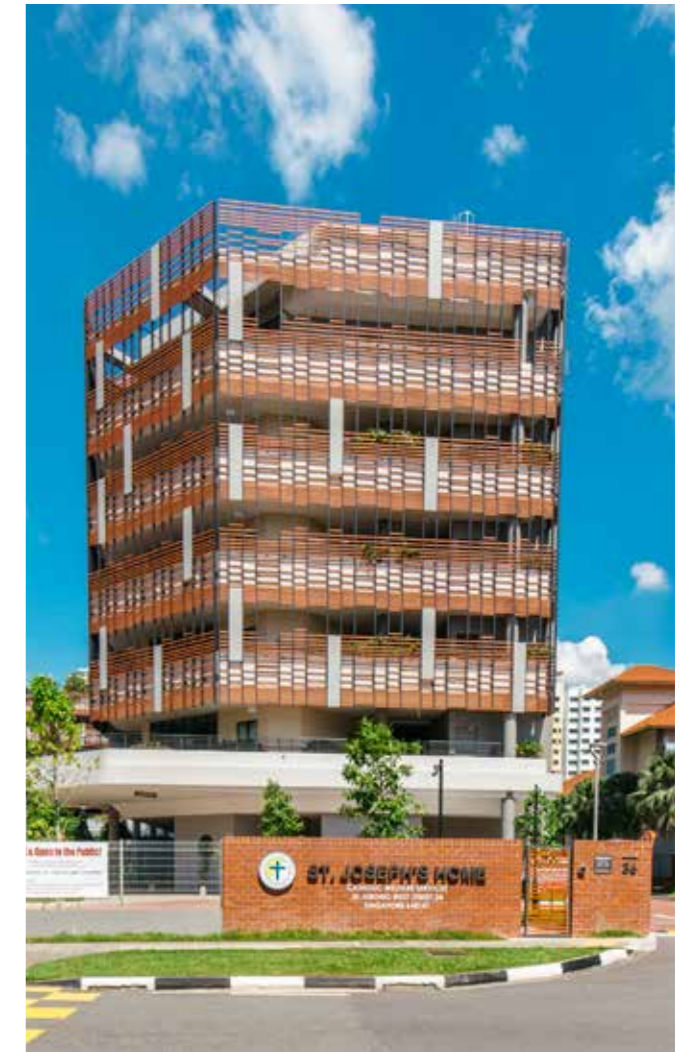
Geylang East Nursing Home

This nursing home was established in collaboration with NTUC Health in an effort to offer residential care facilities that foster a pleasant, safe and conducive environment for the elderly. A series of themed day spaces around the home, also known as reminiscence corners, provide sensory stimulation for residents. These reminiscence corners simulate familiar and relatable settings including a HDB living room and a HDB void deck, where residents are encouraged to partake in various activities such as board games, reading, as well as art and craft projects to help improve their cognitive functions and social skills.



St Joseph's Nursing Home

Besides providing nursing care, this nursing home, run by Catholic Welfare Services, also offers hospice care and dementia care services that are carefully tailored to meet individual needs, with a focus on wellness and community-building, made possible with easy-access communal spaces. Seniors residing in the home also stand to benefit from various therapy programmes and facilities under the supervision of attentive staff.





As weekend warriors, David and Donna love taking their children out to explore local sights. Their Sundays are spent crossing the island on any number of buses and the MRT to check out the latest cafes and malls. David is an advocate for the environment, having carved out a career with the UN's Intergovernmental Panel on Climate Change. "As we choose not to own a car, this is how our family bonds, and we also treat it as a form of exercise!" David chuckles. "I don't want to further burden my parents, who already help take care of Dan and Shan on weekdays."

"Going local" is their mantra, and they do likewise on their holidays in Indonesia and Malaysia, having wet their feet by riding the recently completed public transit systems of Jakarta and Kuala Lumpur.

David
& Donna



David and Donna's Best in Class Picks

MRT Downtown Line (DTL)

Jakarta MRT Line

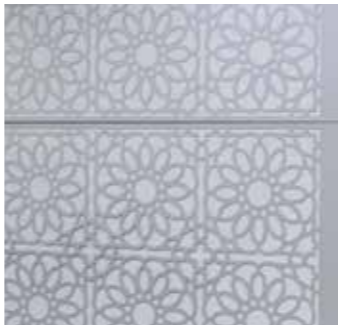
MRT 2 Sungai Buloh-Putrajaya (SSP) Line, Malaysia

Kuala Lumpur-Singapore High Speed Rail (HSR)

Choa Chu Kang Bus Interchange

Seletar and Ulu Pandan Bus Depots

Charge+



transportation infrastructure



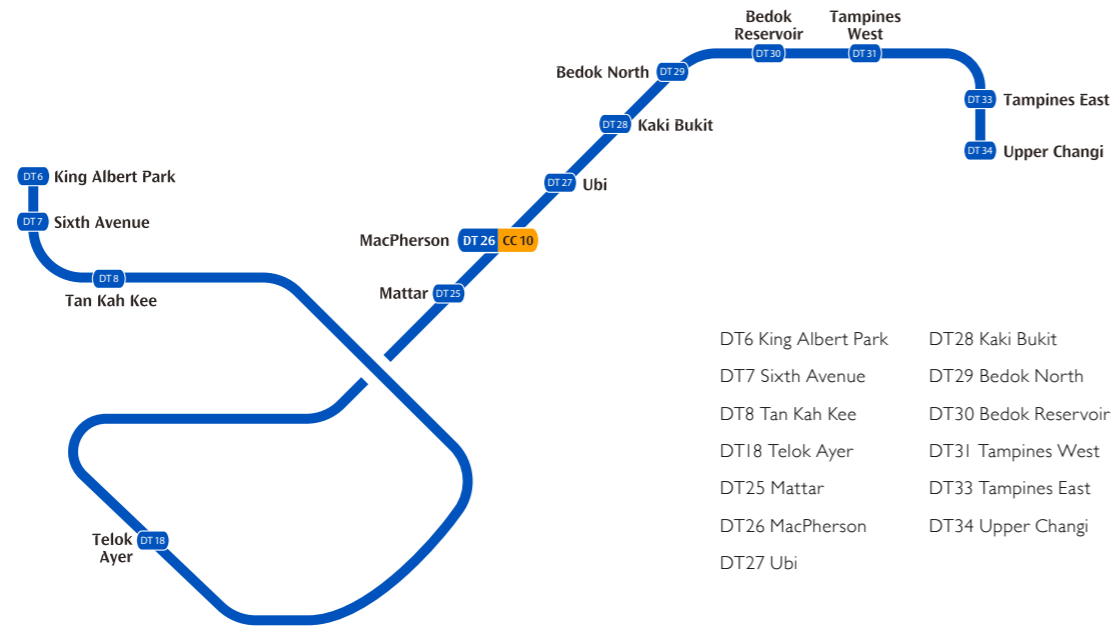
Singapore

MRT Downtown Line (DTL)

Architecture

LTA Excellence Award
Best Design Rail/ Road Infrastructure Project Partner 2019

Outstanding Fire Safety Design Excellence Award
2017



Efficient and convenient, Singapore's MRT system is a harbinger of the nation's progress, forming the core of the city-state's growing public transportation network that facilitates effortless commutes across the island. The Downtown Line is an integral component of the well-oiled transportation infrastructure, representing a sustained effort to improve mobility and connectivity for the population. Notably, each of the stations features unique design characteristics that capture the essence of its environs and project a distinctive architectural identity that leaves a lasting impression on commuters.



Upper Changi

Situated on Upper Changi Road East, this station comprises three levels and connects commuters to the surrounding area via four entrances and several underground pathways. The station design references its urban context: with the Singapore University of Technology and Design (SUTD) and several residential estates in its vicinity, the station adopts clean, white-based interiors graced by vibrant orange accents in geometric forms for a dynamic flair, complemented by an art installation contributed by SUTD students.



Tampines East

Located at the junction of Tampines Avenue 2, Tampines East station sits amidst a cluster of HDB blocks and serves the nearby schools and Tampines North Park. Bold purple interiors constitute the station's trademark design feature, exuding a sense of urban elegance that extends to its exterior. Meanwhile, a glass facade tempered by linear coloured shades provides a visual highlight that cements the station as one of the precinct's focal points.



Tampines West

Catering to the vast Tampines housing estate, Tampines West station facilitates access to a number of schools and residential blocks along Tampines Avenue 4. Two entrances lead from the station to adjacent HDB estates, while connecting commuters to taxi stands and drop-off points. Conceptualised as an urban marker, the station prominently features bright orange tones across its interiors, resonating with the energy and exuberance of the surrounding neighbourhood. The station's lift is designed in the form of a totemic structure, accentuating the full height of the interior spaces.





Bedok Reservoir

The design of Bedok Reservoir station is based on the “station in a park” concept – an acknowledgement of its proximity to Bedok Town Park. Sculpture-inspired elements adorn the station’s entrances, designed to be an open and welcoming conduit to the area, reinforcing its connection to neighbouring estates and the community while creating a seamless transition between outdoor public spaces and the station’s interiors. The station features a calming colour palette that alternates between shades of cyan interspersed with earthy tones to channel the atmosphere of the surrounding park’s greenery.



Kaki Bukit

Kaki Bukit station is located near the Jalan Damai junction and serves industrial developments, schools and residential blocks in the vicinity. An electric blue bridge connects the station’s two entrances to the interior spaces, which consist of concourse, intermediate and platform levels anchored by simple granite-clad columns. Its exterior is composed of glass, steel and three-toned grey aluminium panels, exuding an urban sensibility that blends in well with the surrounding landscape.





Ubi

Located along Ubi Avenue 2, Ubi station connects to nearby commercial developments, industrial sites, residential estates and educational institutions. Covered linkways extend from the station's two entrances, providing sheltered access to the bus stops and drop-off areas outside. Bronze is a prominent colour in the station's design, deriving from the colour of the station's namesake tuber, the tapioca, or "ubi" in Malay. To complement the primary thematic colour, a vibrant collage of blue, green and white columns populates the interior walls on the station's concourse and platform levels. On the exterior, aluminium panels, granite stone and laminated glass combine to form a durable facade.



Bedok North

Situated on Bedok North Road near the Pan-Island Expressway flyover, Bedok North Station is composed of three levels – concourse, mezzanine and the platform level – and is linked via three entrances to neighbouring HDB estates, industrial estates, Bedok Town Park and Damai Primary School. The Umbrella Trees found in the station's surroundings inspired a nature-centric theme, embodied in sturdy wood-brown cladding lining one side of the concourse against a green-coloured backdrop and leaf-shaped graphics adorning the walls and walkways.



MacPherson

Situated at the intersection of Circuit Link and Circuit Road, MacPherson station serves as an interchange with the Circle Line. Consisting of the concourse, mezzanine and platform levels, the station facilitates access to several industrial and residential estates in the vicinity via two entrances. Brick and box patterns in shades of red and orange, arranged in a uniquely staggered fashion, decorate the walls, while brick-red accents add contour and character to the interiors.





Telok Ayer

Telok Ayer station, located in the heart of Singapore's downtown district, enables easy access to Cross Street and neighbouring commercial developments, as well as other transit points. It also serves the many office buildings, leisure spots and nightlife venues in the vicinity. The station's walls are dotted with brightly coloured graphic motifs – a reflection of the lively bustle of the surrounding central business district and the vibrancy of urban life.



Mattar

Located at the intersection of Merpati Road and Mattar Road, Mattar station serves an intermediate zone between dense commercial and suburban residential areas. Two entrances connect the station to residential blocks, schools and commercial developments in the area. Earthy tones deriving from nature are prominently featured across the station's interior spaces and exterior facade, while an aluminium panel ceiling completes the structure.





Tan Kah Kee

Inspired by the surrounding foliage and park-like setting, Tan Kah Kee station is conceptualised based on the theme of nature, as evident in the design of its entrance pavilions that resemble an extended enveloping canopy, as well as the use of green-coloured panels and honeycomb patterns across the space. Clean geometric lines invoke a linear form, while effervescent yellow and orange hues infuse the interiors with a radiant and uplifting atmosphere.





Sixth Avenue

The element of air inspired the design concept of Sixth Avenue station – enamel glass stripes in varying shades of blue ripple across the entrance pavilions in a fluid gradient. This undulating wave motif continues to flow down to the lower levels of the station in dips and curves, echoing the circulation of air.



King Albert Park

Situated along Bukit Timah Road, King Albert Park station adopts the element of water as its theme, featuring green and blue hues inspired by the canal that runs beside it. Along the station platform, a feature wall composed of enamel turquoise and aqua green panels in vertical and rippled patterns depicts the ebb and flow of water, culminating in a design concept that is both contemporary and reflective of the surrounding natural landscape.

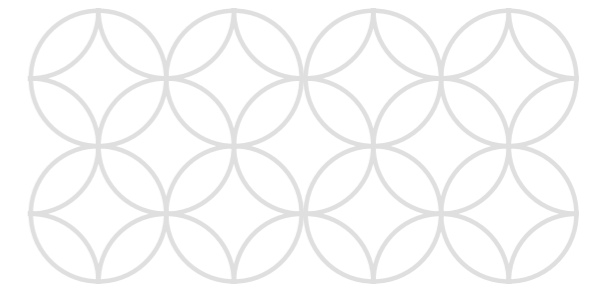
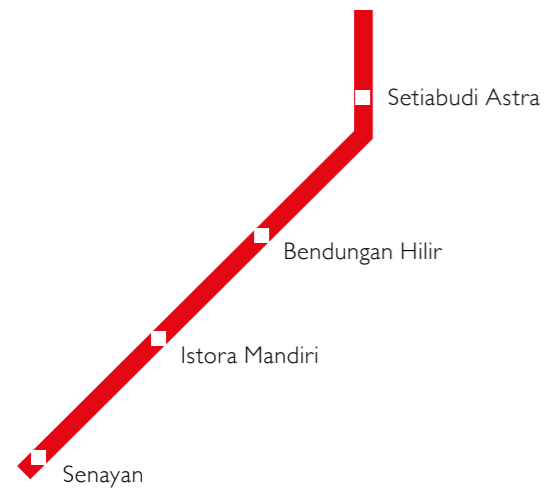




Jakarta, Indonesia

Jakarta MRT Line

Architecture

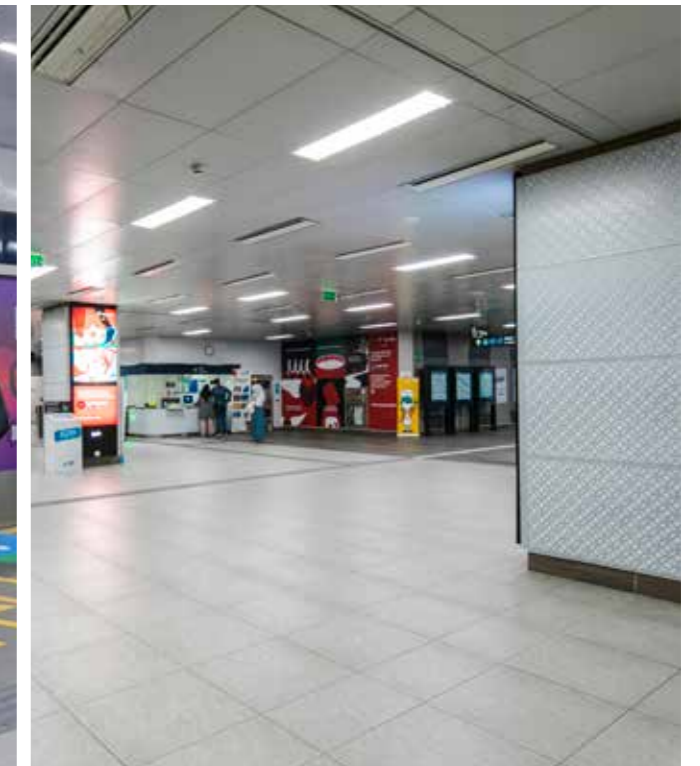


Senayan Station

Senayan station is situated amidst Senayan City, the eponymous shopping district with numerous prominent establishments and public institutions in its vicinity. The station is strategically located within the commercial hub to enhance connectivity and ease traffic congestion. The prevailing theme of this station is the Kawung pattern, which consists of a tessellation of overlapping circles replicated in the likeness of the Areca Palm blossom. As the motif is also associated with Indonesia's rich history, the interconnecting segments remind commuters of the connection between the past and future, besides symbolising the wealth of culture and commerce flourishing in the city.

Among the 13 stations along the new Jakarta MRT line spanning a total route length of 13.7km, the ONG&ONG team helmed two projects comprising four stations, namely Senayan, Istora Mandiri, Bendungan Hilir and Setiabudi Astra. All four stations are located within the Sudirman Central Business District, with entrances designed to facilitate seamless pedestrian flow.

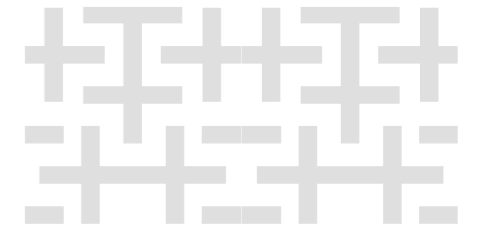
Elements of Indonesian culture are reflected in the architecture of the stations, which incorporate symbols of the nation's rich heritage and local history. Each of the stations is adorned with a recurring motif derived from its source of inspiration, based on local arts and culture or abstract representations of human movement.





Istora Mandiri Station

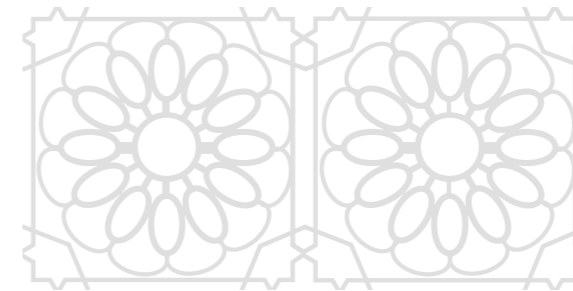
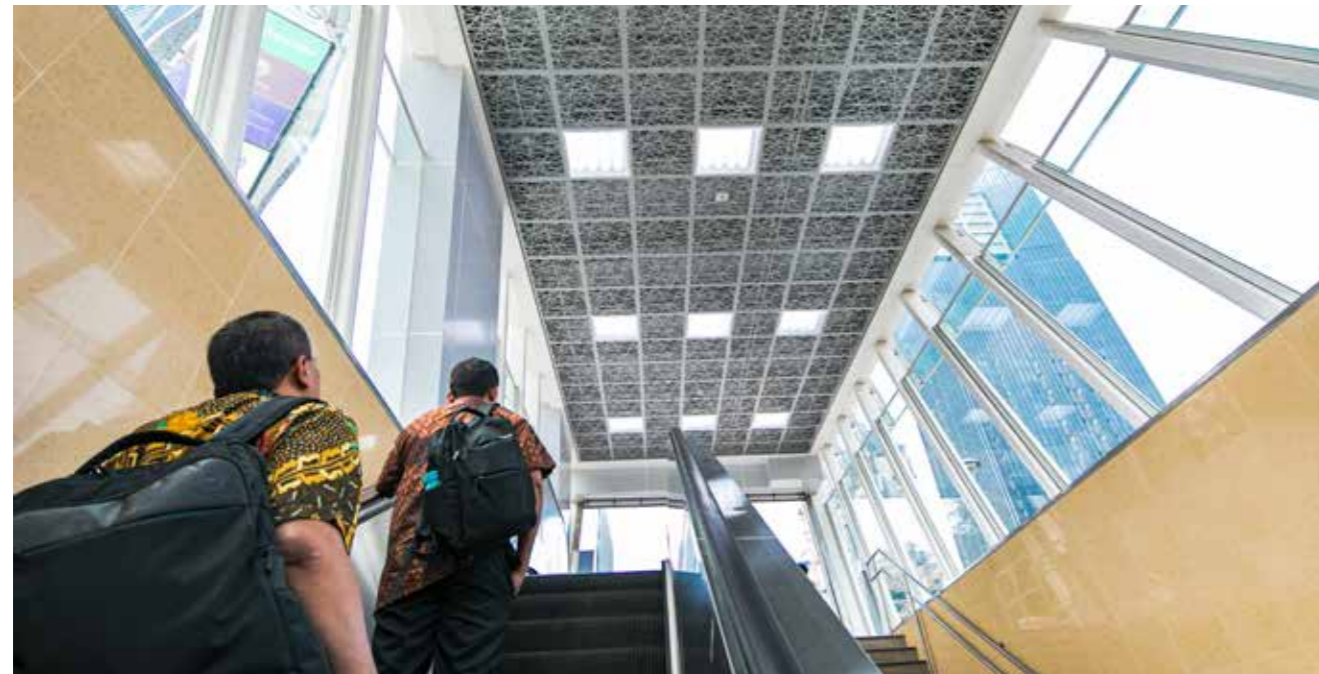
The name of this station stems from "Istana Olah Raga", translated as "The Sports Palace" – the multipurpose indoor sports venue which was first used to host the International Badminton Tournament in which Indonesia emerged victorious and staked their claim to the coveted Thomas Cup. Naturally, the station adopts a motif that channels the energetic spirit of athletes, developed into a "human power wave" concept whose dynamic qualities reflect the active lifestyle of sportsmen. The motif comprises simple modular elements based on the movement of professional athletes, imparting a modern and lively feel to the station accentuated by its striking, orange-coloured interiors.





Bendungan Hilir Station

Located near the Kali Krukut River, Bendungan Hilir, which translates to "Downstream of the Dam", embodies nature-inspired imagery in its design. The foliage surrounding the station was adapted into an intricate linear motif featured on the station's interiors, as well as a secondary pattern mimicking a network of tree branches, evoking a tranquil and pastoral landscape, culminating in a calming ambience that offers respite from the urban bustle.



Setiabudi Astra Station

Ernest Francois Eugene Douwes Dekker was an Indonesian freedom fighter and politician in the late 1800s. After the nation achieved independence, he adopted a Sudanese name: Danoedirdja Setiaboedi, from which the station derives its name. In a tribute to the timeless legacy of the city hero, the station's interiors are decorated with the "freedom fighter" motif, featuring an Islamic geometric design symbolising infinite growth, elegance and reverence. The concourse columns and floor patterns are inlaid with touches of gold for a visually arresting finish to complement the station's historic inspiration.





Malaysia

MRT 2 Sungai Buloh- Putrajaya (SSP) Line

Architecture



The proposed Sungai Buloh to Putrajaya (SSP) Line, which is part of the second phase of efforts to extend the route of the Klang Valley Mass Rapid Transit (MRT) system, traverses from the north-west to the south-east direction of the fast-developing urban cluster and runs through several densely populated townships such as Damansara Damai, Kepong Baru and Serdang.

The project architecture drew inspiration from the serambi, a distinctive spatial characteristic of traditional Malay houses that resembles a verandah, culminating in a design concept that celebrates local culture and heritage while incorporating a sleek, contemporary aesthetic. Louvred cladding and glass panels were integrated into the facade for durability and to facilitate natural lighting. The construction materials and finishes were chosen based on cost effectiveness, aesthetics, ease of maintenance, resistance to vandalism and corrosion, as well as availability in the local context.



As one of the latest additions to the Klang Valley's extensive public transport network, the SSP Line emerges as a catalyst for greater urban connectivity, serving the community by offering a seamless transit experience with its practical design, robust efficiency and easy accessibility, even for passengers with special needs.



Malaysia/Singapore

Kuala Lumpur-Singapore High Speed Rail (HSR)

Architecture



In keeping with the increasing connectivity and robust bilateral relations between Singapore and Malaysia over the past decades, the two governments collaborated to construct the Kuala Lumpur-Singapore High Speed Rail (HSR) in the early 2010s, before mutually agreeing to discontinue the project at the end of 2020. Prior to the HSR's project's termination, ONG&ONG was tasked with designing the architecture for the Seremban and Melaka stations. With a total of eight stops spanning a distance of 350 km, the large-scale project would have enabled an effortless travel experience between the two neighbouring countries.

The ONG&ONG team drew on its extensive experience in the field of transportation infrastructure for this project, applying its expertise in surveying the surrounding landscape of the proposed transit cities and strategically incorporating its observations into each station's final design.

Seremban Station

The main facade of the Seremban station takes on a futuristic concept inspired by the nearby Sri Menanti Palace. Large looming arches consist of a lattice of geometric lines that accentuate its form, while small strips of greenery on the roof of the station blend in with the city's verdant backdrop.

**Melaka station**

The structure of the Melaka station was conceptualised based on the rich trade heritage and colonial influences of the city. A series of intricate sails, inspired by traditional merchant ships, was adopted in the final design, each with its apex tapering off at sharp angles. This imbues the station with a distinctly modern feel amidst the tropical landscape of Melaka.



Singapore

Choa Chu Kang Bus Interchange

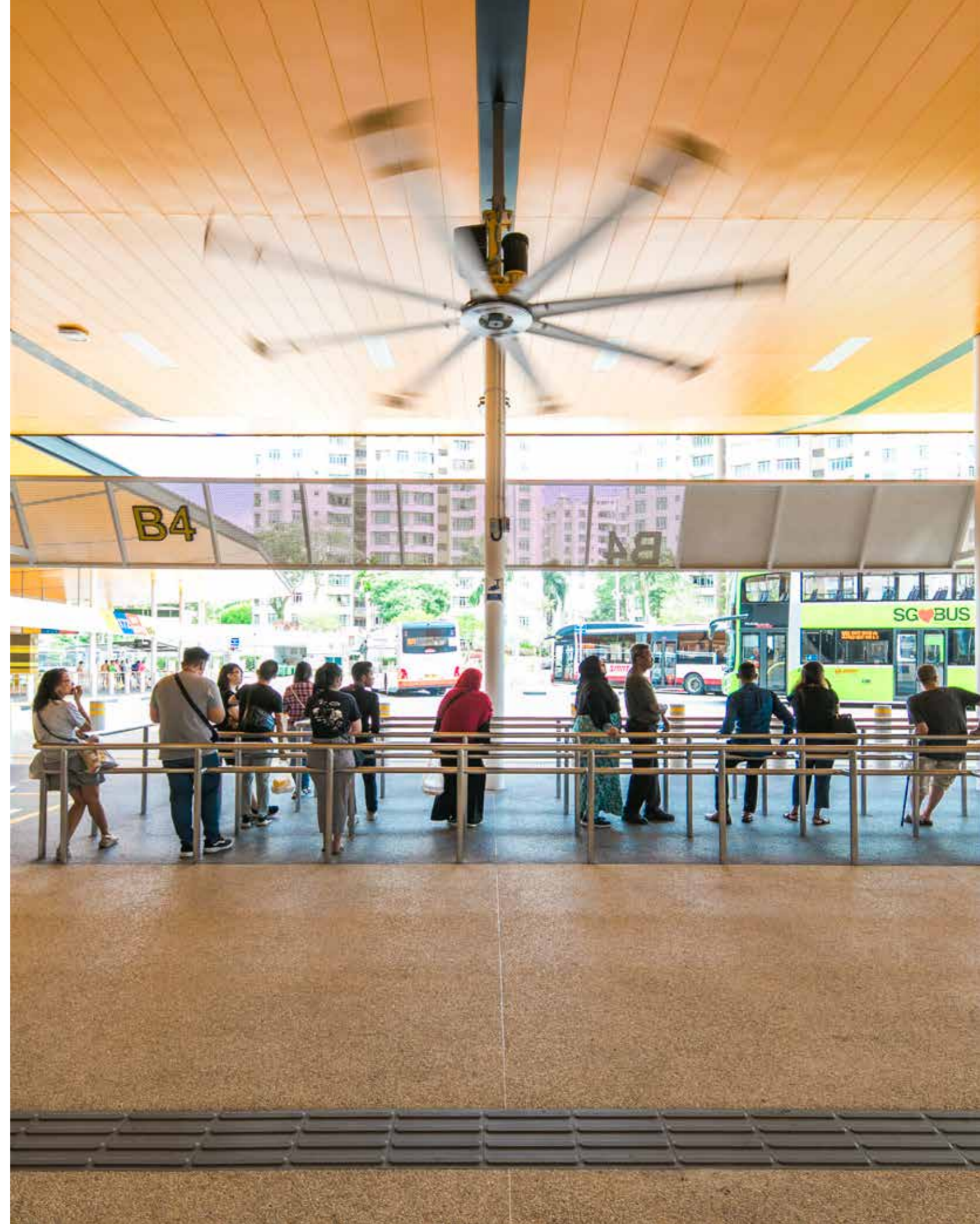
Architecture, M&E Engineering



Located at Choa Chu Kang Loop, this bus interchange serves the surrounding community with its user-friendly design, flanked by a range of neighbourhood amenities including Lot One Shopping Centre, Choa Chu Kang Park and the Choa Chu Kang MRT and LRT stations. The transportation hub was designed to facilitate seamless commutes by incorporating a porous layout that allows for easy accessibility from various entry points within the vicinity.

The structure is sheltered by a large, polygonal roof and extended eaves that run along its perimeter, ensuring that passengers are shielded from the elements when boarding and alighting from the buses. The surfaces are painted bright orange to evoke a dynamic and energetic character, interspersed with black strips for a vibrant contrast.

Wayfinding features have also been integrated into the building by way of multi-tonal, patterned granolithic floor finishes, delineating the interchange's different zones – the main concourse, boarding and alighting bays, waiting area and charging stations – with varying shades of grey, beige and brown to enable easy recognition and navigation. Aesthetics aside, the bus hub is built to last, utilising durable materials such as aluminium to fortify the structure besides adopting an inbuilt weather protection mechanism for hassle-free bus rides and transfers.





Singapore

Seletar & Ulu Pandan Bus Depots

Architecture, M&E Engineering

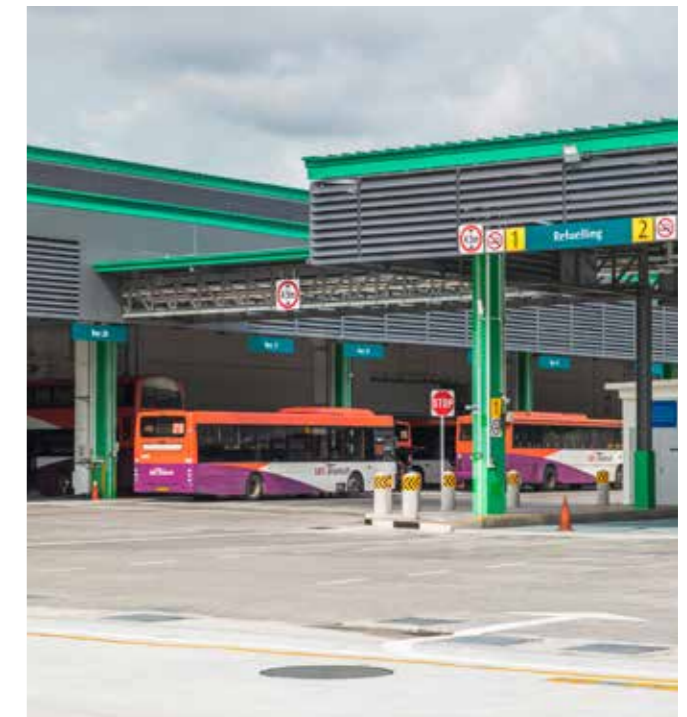


The Seletar and Ulu Pandan bus depots are part of the Singapore Land Transport Authority's initiative to provide adequate bus parking and maintenance facilities for the latest network of commuter bus routes. The designs of the depots include creative elements that highlight their distinctive architectural qualities without compromising on their fundamental functionalities.



Ulu Pandan Bus Depot

A canteen, two-storey office spaces, rest areas as well as refuelling and bus wash stations are among the common features of the bus depot. A ribbon window strip stretches along the perimeter of the structure; the size and shape of the windows are varied throughout to break the linear monotony and impart a sense of dynamic change across spaces.

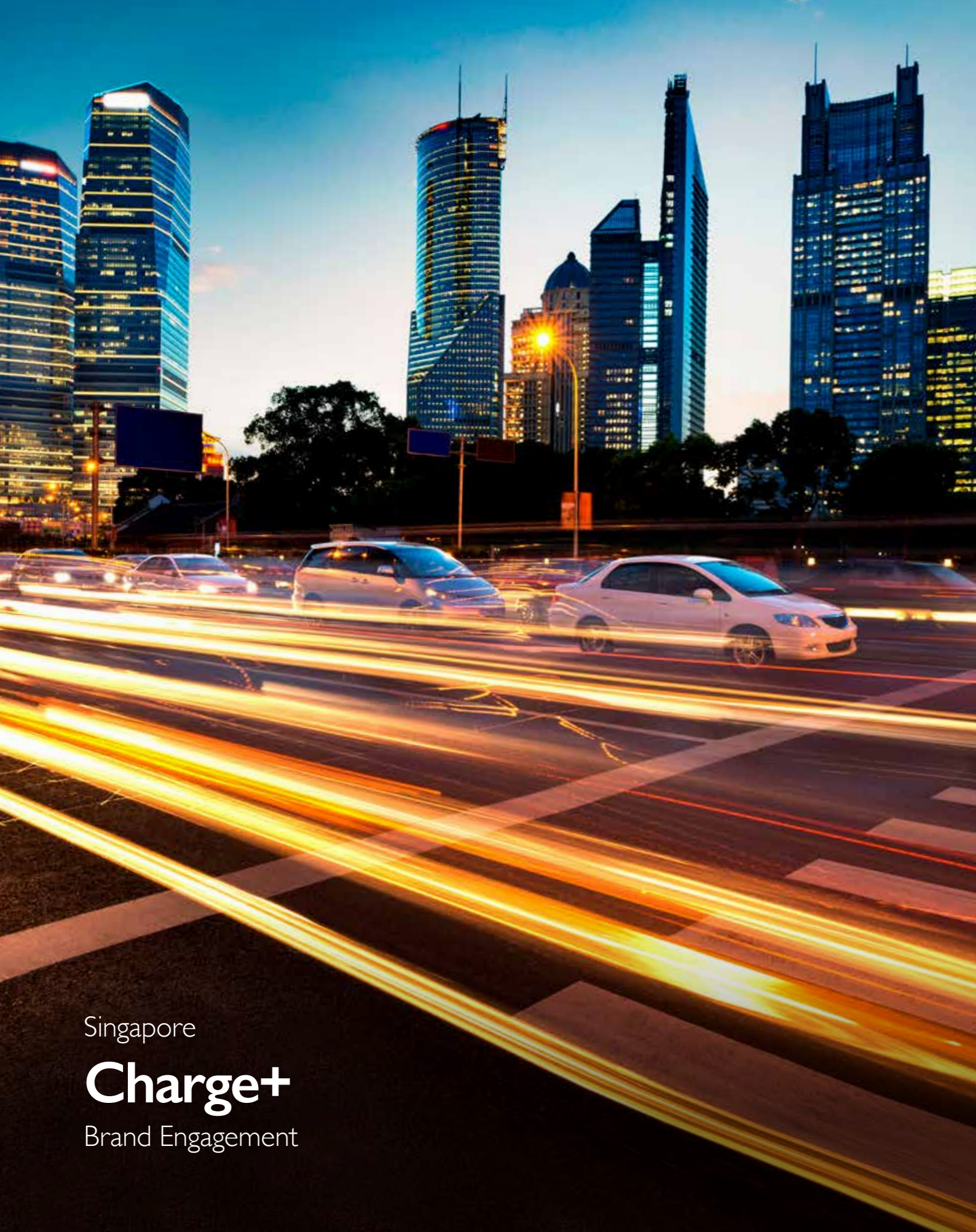




Seletar Bus Depot

Full-height windows line the span of communal areas such as the canteen, while offices and operation rooms are afforded more privacy with smaller windows. The groove lines and wavy contours on the precast facade panels and perforated metal screens reflect the notion of constant movement – characteristic of the smooth and seamless transport operations essential to the depots in their role as important entities within Singapore's extensive public transportation system.





Singapore

Charge+
Brand Engagement

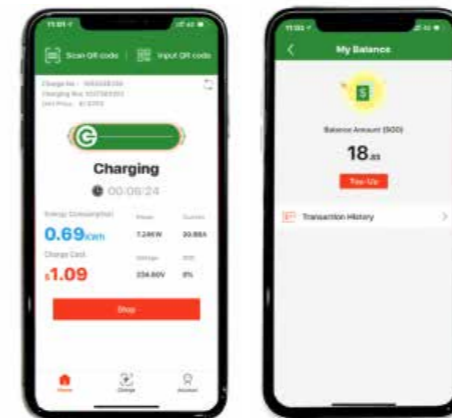


CHARGE+

Charge+ is a green mobility initiative, positioned to be the leading integrated electric vehicle (EV) charging solutions provider in Singapore and Southeast Asia. It aims to catalyse the proliferation of electric mobility in the region, starting with the implementation of 10,000 charging points across Singapore by 2030.

Charge+ is a holistic service that offers optimum convenience to EV owners. EV charging is hassle-free with the proprietary ultra-slim, compact charger designed for plug-and-play in all existing carparks.

Users also enjoy a seamless charging experience via an easy-to-use app that allows for ease of locating available chargers, besides facilitating charging sessions and payment.



Smart Charging Software


Smart charging technology enables Charge+ to overcome the limits of localised power supply, while all EV chargers nationwide are monitored remotely through a cloud-based management system.

Charge+ takes pride in its prospects as an innovative business model, driven by the concepts of Charging-as-a-Service and Platform-as-a-Service to empower communities and revolutionise urban mobility for cities of the future.



Ultra-Slim Charger





Like most mothers, Donna personally shortlists schools for her children, Daniel and Shannon. She evaluates them by reviewing their academic standards, and also the strength and variety of their extra-curricular activities, facilities and emphasis on areas of individual development. "We are fortunate in that we have the means to choose between public and private schools, so it was also important that I considered the social aspects of my children's growth," Mrs Wee shared. Daniel smiles as they discuss his latest science project. Shannon, who is about to be enrolled, says simply, "I'm looking forward to having more friends!"

Their selection includes schools with a long heritage of excellence, a few closer to home for an easy commute, as well as more exclusive and reputable institutions.

Daniel & Shannon



**Daniel & Shannon's
Best in Class Picks**

Nexus International School

Tanglin Trust School

SMU Campus Green

Schools Upgraded under
PERI Programme





Singapore

Nexus International School

Architecture

Nestled along the cul-de-sac of Aljunied Walk, Nexus International School comprises 12 floors of learning spaces and facilities, including a suite of fully-functional, purpose-built rooms and halls. Drawing on Broadway Malyan's design consultancy services, the building's grey façade is embellished with interweaving, fluid strips that simulate the ebb and flow of traffic along the adjacent highway. Come twilight, neon-lighted strips illuminate the exterior in vibrant blue and green hues that echo the school's thematic colours.



Photo CR: Broadway Malyan, Finbarr Fallon





The school's architecture was carefully planned to not only provide a conducive environment for innovative learning and creativity, but also to accommodate state-of-the-art amenities such as well-equipped sports venues, a sheltered swimming pool and a spacious 550-seater auditorium furnished with advanced sound and lighting systems.



A cafeteria is located on the middle floor, designed to be a shared space for staff and students alike to cultivate meaningful connections during mealtimes. The overall design concept of the institution strikes a wholesome balance between a modern, youthful outlook and all-around functionality, resulting in an ideal setting for holistic education.





Singapore

Tanglin Trust School

Architecture, Interior Design, Landscape,
C&S Engineering, M&E Engineering



The new 59,000 sqm, seven-storey Tanglin Trust School was built with the objective of creating a conducive and inclusive environment that fosters a sense of community among its occupants. Hence, the school's design incorporated pockets of space dedicated to social interaction, such as the semi-outdoor Social Platform, cafe and play area. Moreover, new ideas and concepts were introduced into the school's architecture, resulting in a versatile, dynamic institution that fulfils students' needs while improving operational efficiency.





Elements of nature, especially the Banyan tree – a symbolic feature of the campus – inform the design language of the school, as evidenced by the application of a moss wall, sky mural and wooden or timber flooring in several areas. The interiors are enlivened by a vibrant colour scheme and are given careful treatment with the use of quality materials, finishes and fixtures.



In addition to functional spaces such as classrooms, staff offices and dining areas, recreational spaces such as sports amenities, a gym and a well-being area are included to encourage holistic development, as well as media technology rooms equipped with state-of-the-art facilities. The refurbished school appeals to prospective students with its contemporary and welcoming atmosphere, offering an engaging and enriching campus experience beyond its cuboid, glass-fronted facade and rectilinear structure.







Singapore

SMU Campus Green

Architecture, Interior Design, M&E Engineering

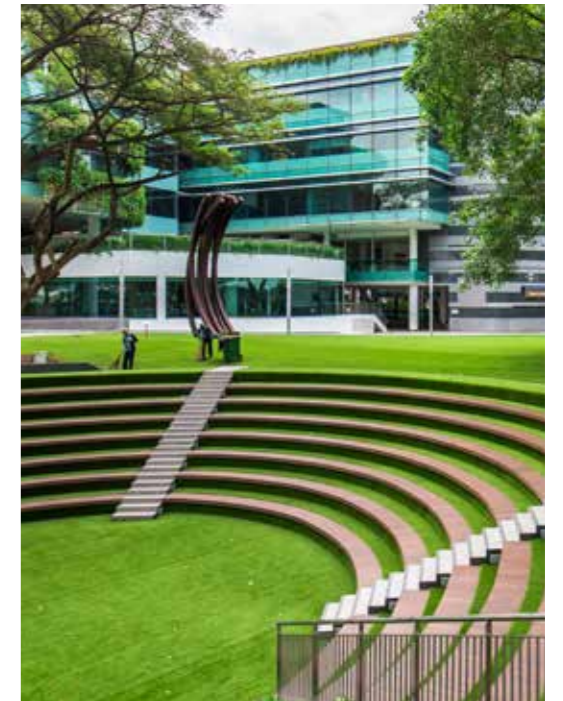


As the pulse of this reputable educational institution, the changes made to SMU Campus Green can be envisioned as an evolution of the space to meet the needs of a new generation of users. It is conceptualised to be a dynamic learning environment, composed of spaces and facilities that encourage interaction and collaboration among students and faculty personnel alike, fostering a sense of community besides creating a vibrant and engaging university experience.

For a balanced varsity life, students have the option of seeking respite from their academic commitments at the new CCA area, amphitheatre, jogging track or fitness centre for recreational activities. The CCA space and amphitheatre were specifically designed to blend into the only green area on the urban campus. Both additions meld with the open, publicly accessible parkland surroundings. The on-site heritage trees have been retained.

The jogging track was also altered so that it now has a more meaningful running route and is also neatly integrated within the existing and new additions of the campus. Additionally, the upgraded fitness centre – occupying the basement and ground levels – is well equipped to suit the lifestyle of the Gen Z student and provide an experiential learning space to support SMU's sports curriculum.

The decision to go with artificial turfing for the entire Green was first carefully considered. Ultimately it was decided that this was the best option to create a conducive space that can be enjoyed by both students and the general public.





New learning and teaching spaces are added for improved capacity, while flexible event venues, seminar rooms and dedicated study areas for SMU students inject a fresh flow of life and knowledge into the thriving campus – a stimulating setting where new ideas are created and shared between students and faculty, and where critical thinking, collaboration and learning take place. Verdant greenery is featured across the campus grounds, in line with SMU's vision to incorporate environmentally-friendly features in its infrastructure.





Singapore

PERI Upgrading Programme

Architecture, C&S Engineering, M&E Engineering

Supporting the Primary Education Review and Implementation Committee (PERI)'s initiative, for a more holistic approach to primary education, more facilities are added to existing schools and infrastructure and are enhanced in multiple phases. This effort from the Ministry of Education (MOE) aims to use holistic assessment to support student learning and development, to build confidence and desire to learn and to better prepare them for the future.

Phase 4E, 5A and MOE Kindergarten

A key aspect of the PERI upgrading programme involves the addition of new infrastructure and new programs depending on the strength of the schools. All schools will have new Performing Arts facilities, facilities and an expanded Media Resource Library while some schools will get new auditoriums. Additionally, as part of the enhancement to physical education facilities, new running tracks and fitness stations will be added to all schools while selected establishments will get Indoor Sports Halls and covered courts.

All classrooms will be provided with new handwash basins whilst new classrooms for Mother Tongue and Subject Banding are added for remedial classes. Student Care Centres were also added for after school care. The teaching staff are provided with new staff workrooms, nursing rooms, rest areas and Teaching

Laboratories and Staff Resource Rooms. Outdoor Experiential Learning facilities like landscaped gardens, outdoor science play stations and pavilions are added for outdoor learning and exploration.

MOE also launched their initial MOE kindergarten programme for early childhood learning housed in the new blocks at Anchor Green Primary School and Cedar Primary School, catering to 4-, 5- and 6-year-olds. This ongoing programme by the Singapore MOE will potentially increase the schools' capacity and improve the teaching and learning activities, resulting in a holistic, enjoyable and meaningful experience for students, giving them a well-balanced and creative environment for the development of crucial skills in their formative years.

- Admiralty Primary School
- Anchor Green Primary School
- Beacon Primary School
- Cedar Primary School
- Endeavour Primary School
- Peiyong Primary School
- Punggol Primary School
- River Valley Primary School
- Woodlands Primary School
- CHIJ Our Lady of the Nativity



Admiralty Primary School

Additions & Alterations works comprising of the erection of a 2-storey indoor sports hall and a 2-storey building.



Anchor Green Primary School

An outdoor science garden was added to facilitate Outdoor Experiential Learning activities for rich learning experiences outside the classroom. This was also added to encourage a holistic learning experience for students in the MOE Kindergarten.



Beacon Primary School

Enhancements were made to the existing staff office and meeting rooms. Additionally, a Media Resource Library was also added.



Cedar Primary School

Being one of the first adopters of the MOE Kindergarten programme, the primary school received new additions to its premises. This includes the very first Indoor Sports Hall to utilise a Cross Laminated Timber (CLT) construction.



Endeavour Primary School

Enhancements were made to the staff working area. Additionally, upgrades were also made to the interaction lounge, nursing room and dance studio. Outdoor premises were added to aid Outdoor Experiential Learning activities.



Peiyang Primary School

Outdoor sports and activity premises were added to the school compound. This was done in line with Outdoor Experiential Learning initiatives, bringing students outside the classrooms for a richer learning experience.



River Valley Primary School



Punggol Primary School

A new Indoor Sports Hall was added for each school as part of the PERI enhancement programme. By adding covered activity areas, the schools were given more flexibility in planning their physical education activities. Also, this ensures that these lessons can continue to commence even through wet weather.



Woodlands Primary School

A new Media Resource Library was added to this primary school. Additionally, a Performing Arts Theatre, complete with retractable seats was added to its list of facilities.



CHIJ Our Lady of the Nativity

For CHIJ Our Lady of the Nativity, a new six-storey Annex Block comprising classrooms and a single-storey indoor sports hall was constructed. The architectural proportions and dimensions of the latest additions are carefully configured to ensure the new blocks assimilate well into the school's existing layout. For the exterior, the signature stained glass panel that was previously centrally featured on the school hall building was shifted to the front of the new indoor sports hall, greeting all who enter the school compound.





ong-ong.com



proj-xion.com



proj-innovations.com



rankine-hill.com



sca-design.com



immortal.com.sg



oxd.ong-ong.com



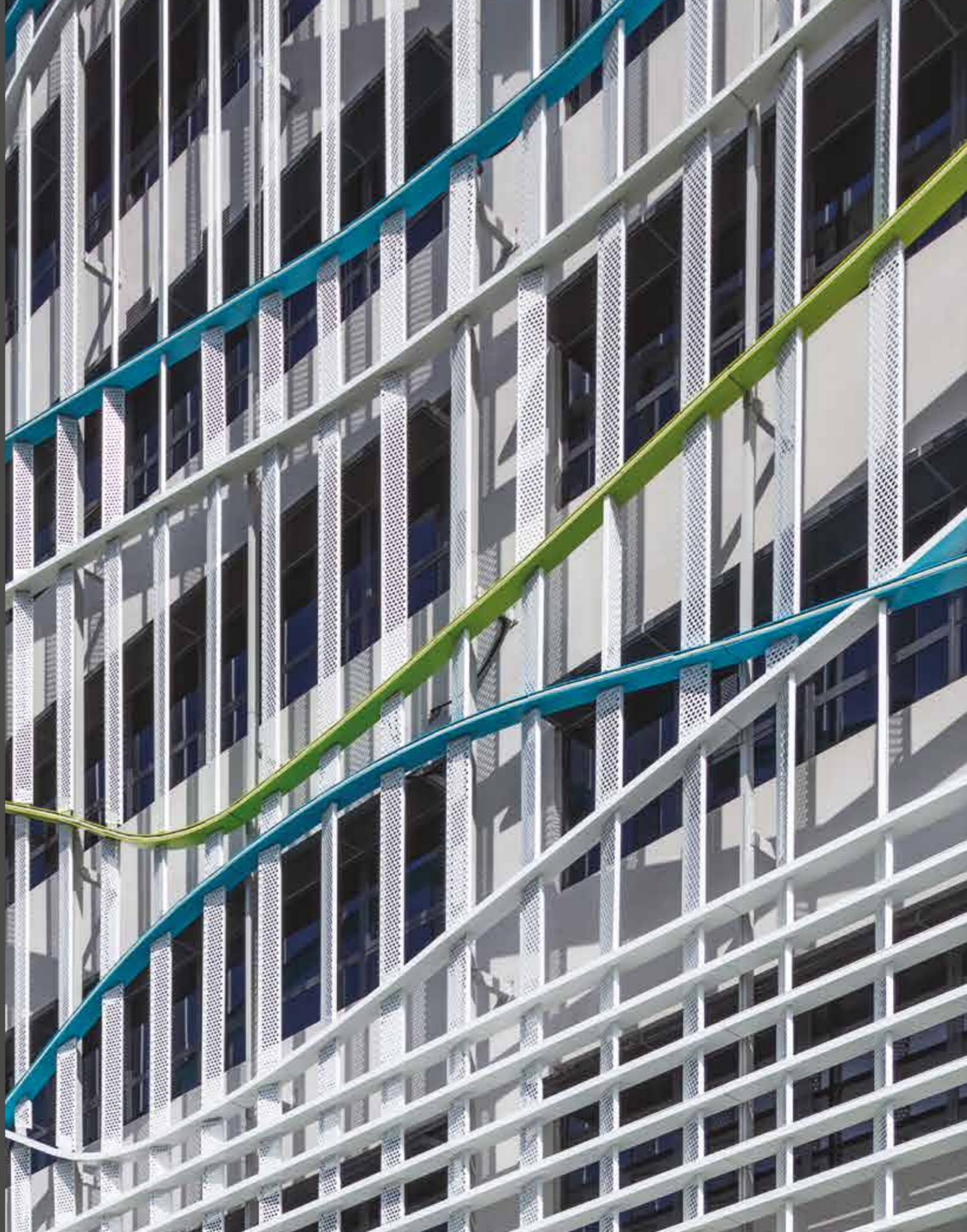
ONG&ONG Group Pte Ltd
510 Thomson Road,
#11-00 SLF Building, Singapore 298135
t +65 6258 8666
corpcomms@ong-ong.com
ong-ong.com

CIVIC II:
AN ANTHOLOGY OF BEST IN CLASS PUBLIC SPACES | VOLUME TWO | SUMMER 2021

CHIEF EDITOR: ASHVINKUMAR KANTILAL | MANAGING EDITOR: STANLEY TAN | CREATIVE DIRECTOR: STANLEY TAN
DESIGNER: LIM PEI XUAN | WRITERS: EMERIC LAU, CHOO SUET FUN, KYNE ANG | PHOTOGRAPHY: WERTY HO

COPYRIGHT 2021 © THREE SIXTY REVIEW. ALL RIGHTS RESERVED. NO PART OF THIS PUBLICATION MAY BE REPRODUCED WITHOUT PRIOR PERMISSION FROM THE PUBLISHER. WHILE EVERY EFFORT HAS BEEN MADE TO ENSURE THE ACCURACY OF THE INFORMATION CONTAINED IN THIS PUBLICATION, THE PUBLISHER CANNOT ACCEPT RESPONSIBILITY FOR ANY ERRORS IT MAY CONTAIN.

IN LINE WITH OUR CORPORATE STRATEGY OF SUSTAINABLE DESIGN, THIS PUBLICATION IS PRINTED ON PAPER FROM SUSTAINABLE SOURCES.



EXPERIENCE
BEYOND.

WE UNDERSTAND ASIA

SINGAPORE INDONESIA MALAYSIA MONGOLIA MYANMAR THAILAND VIETNAM

www.ong-ong.com