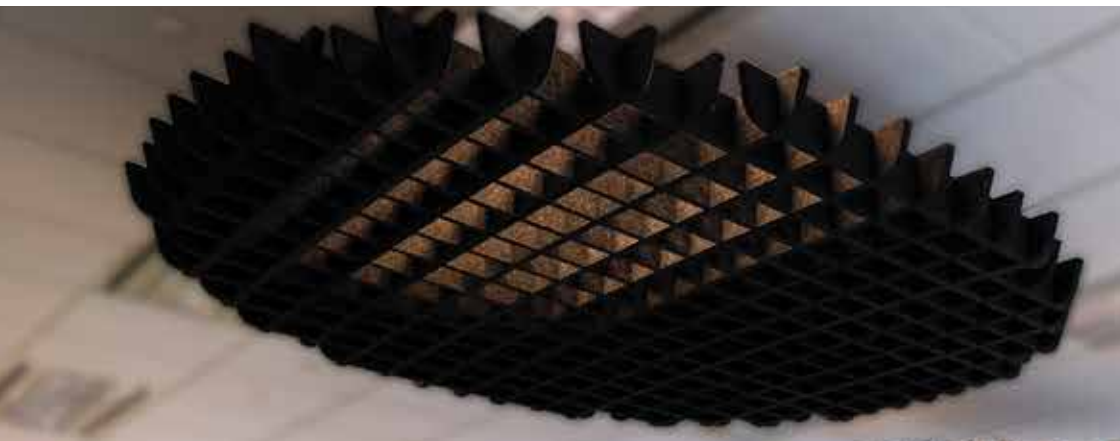
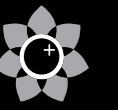




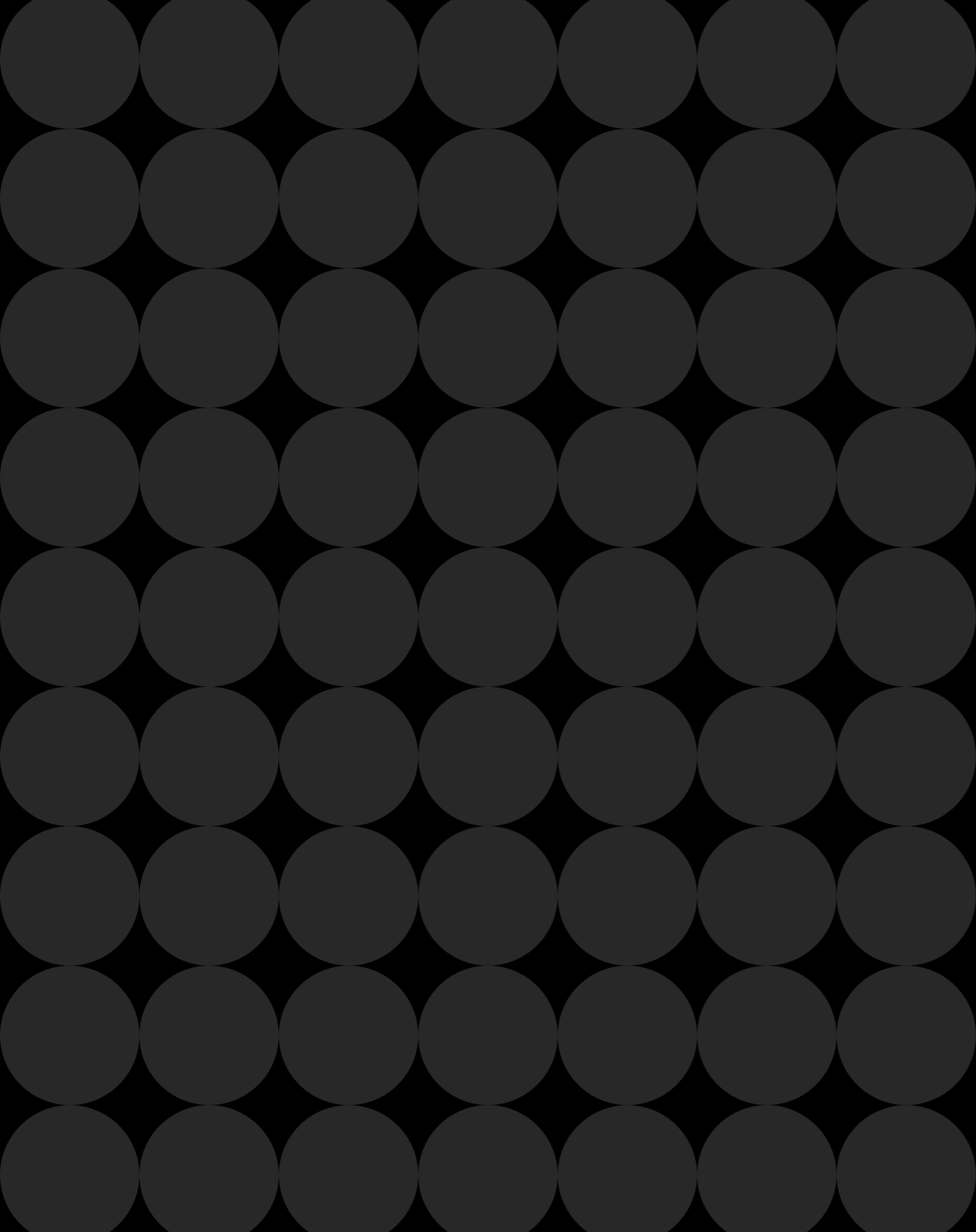
# Commerce III



An Anthology of  
Best in Class Commercial Spaces




# Commerce III



Personalised Spaces  
Seamless Interactions

Let's discover **COMMERCE**





In a world where globalisation is predicated on efficiency and productivity, a distinction must be made between work-life balance and integration. Gone are the days when corporate culture demanded rigid schedules and unnegotiable work weeks. Businesses are jumping on the bandwagon of digitalisation and embracing lifestyle-centric environments.

The ability to work from home has since changed the way the corporate world operates, with firms opting for agile interior spaces capable of adapting to different purposes. A contemporary office is envisaged as a social hub, a nexus where ideas are exchanged, and partnerships are cultivated. It engenders a sense of trust and comfort that individuals seek amidst the hectic tempo of typical workdays.

Adapting and configuring smart technologies for the workspace, coupled with the incorporation of aesthetically pleasing lifestyle designs is just one of the many exciting concepts within these pages.

Let's Redefine the Ethos of Work.

“ The true language of commerce is the natural conversation between human beings.” - William C. Brown



# Design & Experiences Intertwined

The feeling of affinity is important, and cities and places should be designed in a way that places connectivity at their fore. In the contemporary sense, connectivity also refers to how future-ready the built environment is in the face of digitalisation. With context, people will feel a sense of belonging and future architects and developers should find new ways of linking people and places. Connectivity is about how various spaces can be inclusive and flexible or agile.

Connectivity is a holistic engagement.





12

**Satoria Tower**  
INDONESIA



18

**Solaris**  
SINGAPORE

86

**Financial Institution**  
SINGAPORE



28

**Melinh Point**  
VIETNAM



40

**Fiz**  
SINGAPORE



102

**Roche Diagnostics**  
SINGAPORE



64

**Social Media Platform Office Expansion**  
SINGAPORE



**Commercial & Mixed-use**

- 12 Satoria Tower
- 18 Solaris
- 22 Tcube
- 28 Melinh Point
- 32 Vittoria Cotton Tyre Factory
- 36 2628TS
- 40 Fiz
- 44 Rochester Commons
- 48 Foodfab @ Mandai
- 52 St. James Power Station
- 54 One Holland Village
- 56 Grantral Mall
- 58 INSPACE
- 60 Samyan Business Town

**Workspace Reimagined**

- 64 Social Media Platform Office Expansion
- 70 Hitachi Vantara
- 76 Taipei Fubon Bank
- 80 ABeam Consulting
- 86 Financial Institution
- 92 discovermarket
- 96 Palo IT
- 102 Roche Diagnostics
- 108 Wachsman
- 112 Jafco Asia
- 116 Media Research Agency
- 120 Media Conglomerate
- 124 Cadence
- 126 Brunswick





Commercial & Mixed-use





Architecture

## Satoria Tower



An eye-catching design concept that encapsulates opulence and professionalism within its boundaries.





Satoria Tower sits in the heart of West Surabaya's bustling CBD, overlooking the vibrant skyline of this Indonesian city. The façade of the skyscraper features a distinct oval shape that is reminiscent of a traditional warrior's shield. The architecture team took great care in defining the contours of the building, where gradual tapering lines at the middle of the building lead to a wider base at the ground level. This decision

not only bolsters the structural integrity of the skyscraper, but also provides contrasting architecture to the surrounding low rise units and shophouses. As onlookers gaze skyward, the facade ultimately culminates with the distinct Satoria logo at its apex. Its top three levels house the company's headquarters, from which occupants are granted unrestricted vistas of the golf courses and fields below.

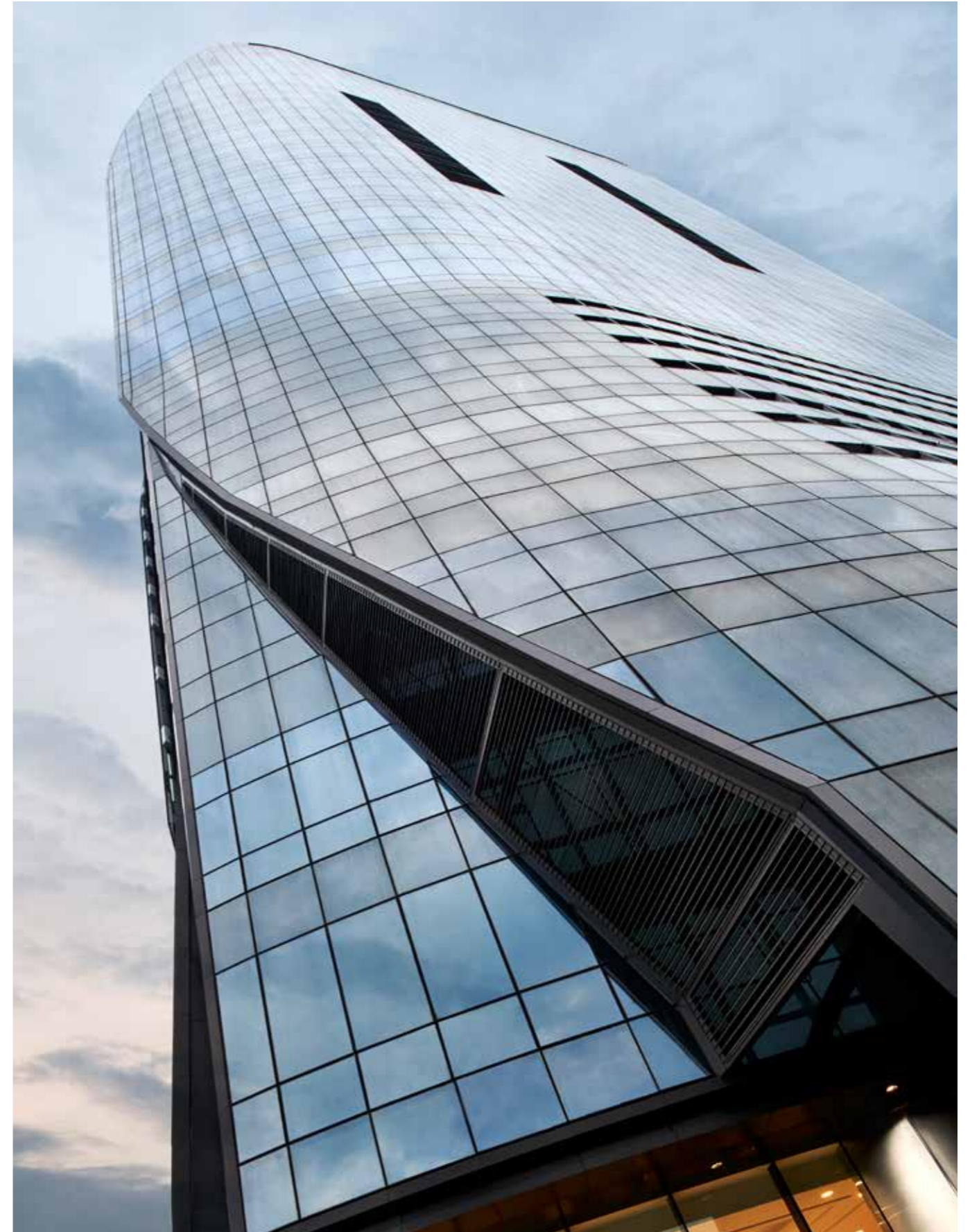




Its imaginative form and modern outlook is set to make a bold statement. Multiple SOHO units are interspersed with pockets of common spaces that serve as flexible meeting venues and recreational hubs. Each level is fitted with expansive windows that meld with the building's curvature, allowing natural sunlight to enter.

The wide base of the building also serves as a foyer, featuring

metal pillars that enhance the spaciousness. The use of marbled flooring also adds to the sense of grandeur, with dark floor markings leading the eye towards the lift lobbies and reception counter. This simple yet elegant layout of the foyer acts as a transition point that connects visitors from the industrial heartlands of West Surabaya to the warm and sophisticated sensibility of the corporate environments above.





Interior Design

# Solaris

Strategic and thoughtful design have helped create a strong sense of community, that embodies the company culture and prioritises employee wellness at work.







Located within the research hub of Fusionopolis, Solaris A&A boasts a captivating exterior that encapsulates the biophilic qualities of the building. The main task for the ONG&ONG team was to emulate the greenery lining the façade and integrate it with the existing interior structures, creating a breath of modernity amidst the common spaces. Stepping into the main atrium of the building, a vertical green wall takes centre stage while an array of timber panels embedded with LED strips line the walls.

Decorative plants are strategically positioned to conceal unutilised and unsightly components, while aluminium cladding painted in contrasting colours partially covers the elevated ceilings.

The team also transformed the lobby with the optimisation of space and functionality in mind. A central concierge counter enables wayfinding, while vibrant seating areas are scattered over the carpeted floor that anchor the area along with the darker tones of the curtain walls.

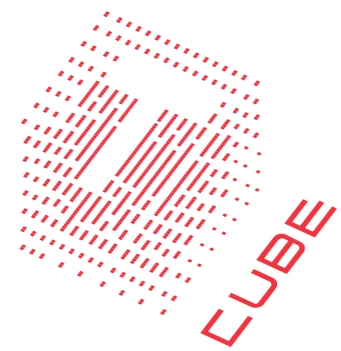




Interior Design, Brand Engagement  
& Environmental Wayfinding

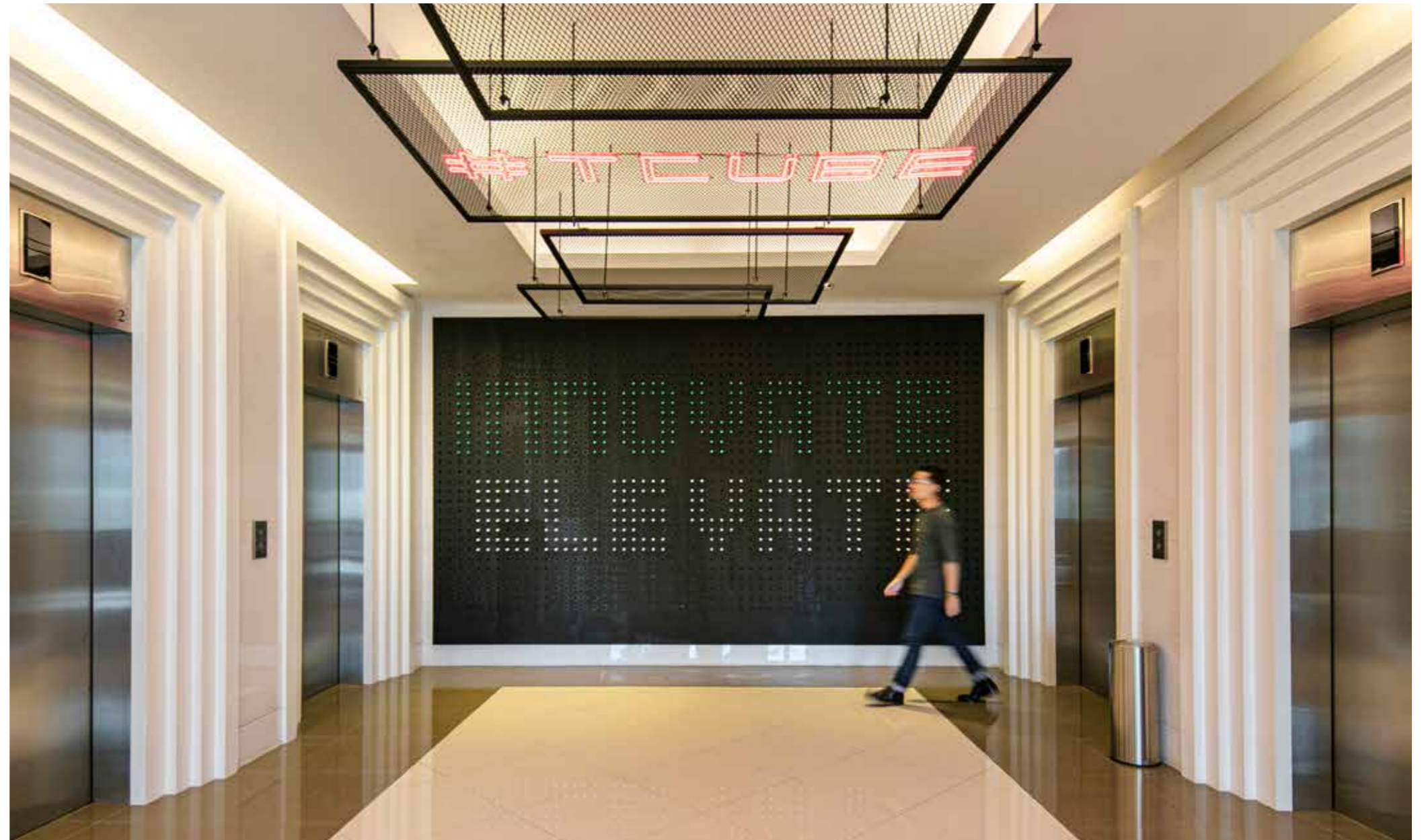
# Tcube

A vibrant, interactive office space that draws inspiration from culture and nature while integrating colours, patterns, and industrial elements.



Tcube is a hybrid multi-use space developed by the Singapore Tourism Board (STB) to help various stakeholders in the tourism industry move towards digital transformation. For this project, the 360 Solution was applied where IMMORTAL and SCA Design worked together to devise the branding and wayfinding strategy as well as workplace interior designing.

The name Tcube comes from the 3Ts – Tourism, Technology, and Transformation. Thus, the logo for this space features the letter T encased in the shape of a cube with a pattern inspired by digital code, the backbone of today's technology. As Tcube is meant for hosting events and meetings, wayfinding is a crucial component for this space. The signage and interiors offer a







combination of biophilic and digital-inspired designs, while various rooms within the space are in different colours including green to represent growth, pink to signify fresh ideas, and yellow for fruition. This is juxtaposed with the futuristic typography and icons on all signage.

where users would be inspired to explore, share and discover. A major challenge for space planning was that the layout branches out to two dead ends, which was remedied with a layout of highly malleable corridors and common walkways that can be easily adapted to suit the unique needs of each user. This versatility also makes it easier to test out different prototypes within the space.

The design philosophy for Tcube is based on creating a dynamic and safe environment

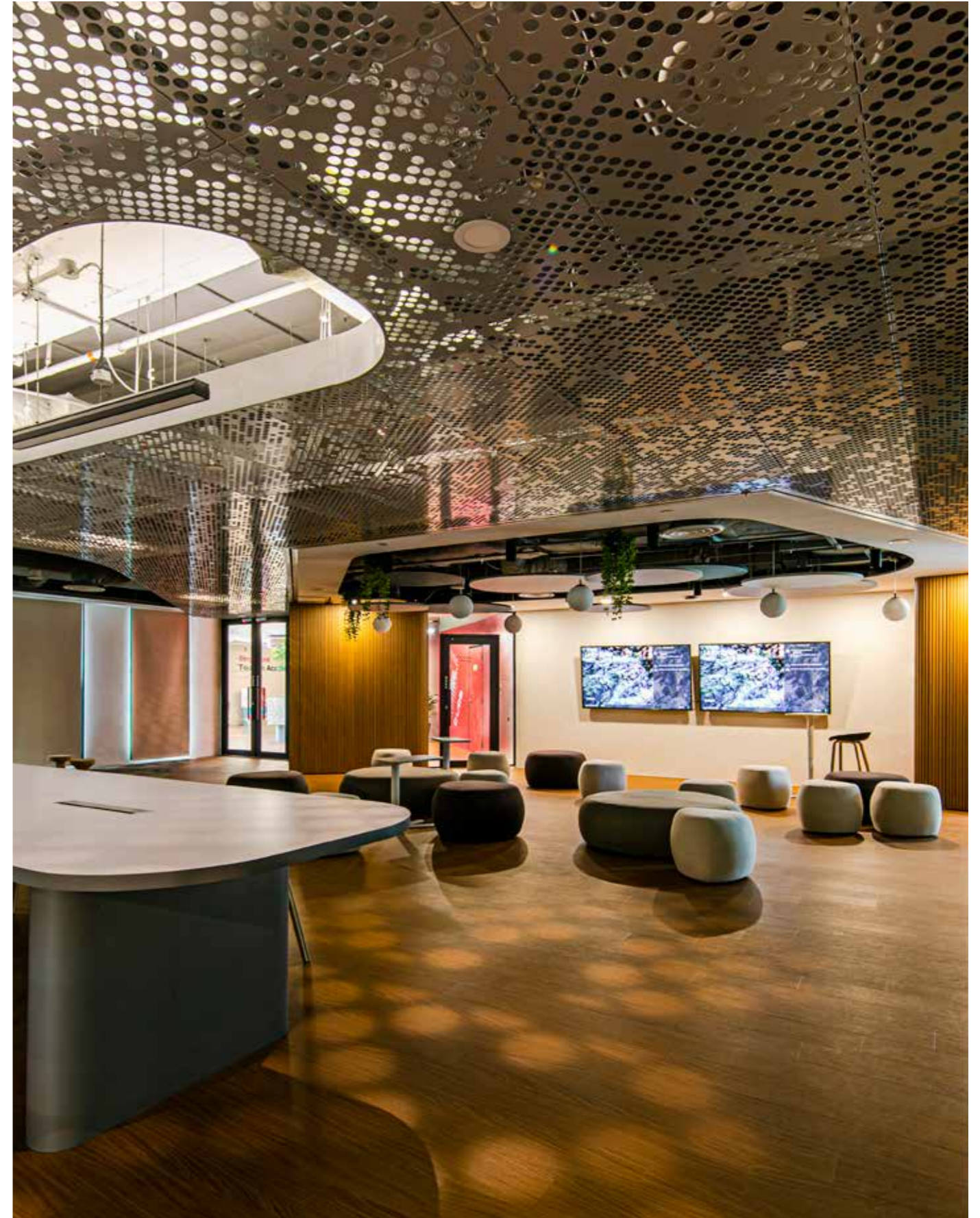






Beyond spatial planning, IMMORTAL and SCA Design worked hand-in-hand to design and apply sensory effects within Tcube to complement the digital interventions. A perforated ceiling enables a dappled

spotlighting effect on common walkways, creating a more immersive user experience. This also serves as a meditative transition, subtly nudging them to step out of their comfort zone to innovate.





Interior Design

## Melinh Point



Impactful, contemporary, functional, and timeless – the new design creates an impressive and memorable experience for visitors.





Experience Matters – this is the underlying belief that has upheld the prestige and elegance of Melinh Point, owned by Frasers Property. Situated within District 1 of Ho Chi Minh City, the renovation and redesigning of the commercial tower was entrusted to ONG&ONG's architecture team. Taking advantage of the tower's pristine location alongside the Saigon River, a Parisian themed aesthetic was adopted that complements the thriving streetscape of its vicinity. Visitors are greeted by a stylish clock adorning the vintage archway of the entrance.

Whilst preserving the architectural integrity of the original boutique office tower, the team also combined natural and synthetic materials such as tempered glass, stone and perforated Corten to bolster the durability of the existing structures. With nearby commercial buildings also crediting their designs to ONG&ONG, Melinh Point's embodiment of architectural refinement and authenticity to its locale have cemented its status as one of the District's most appealing business destinations.





Architecture

# Vittoria Cotton Tyre Factory







Blending sophisticated aesthetics and sustainable practices, this facility embodies the brand's values and innovative spirit.

With over 35 years of operations in the populous cities of Bangkok and Rayong, Vittoria Group officially launched its inaugural cotton tyre factory in 2023. The company is set to breach new frontiers within the biking industry, buoyed by the rapidly modernising communities in Thailand. Its unique offerings reflect dynamism, precision and reliability – the three game-changing concepts that are anchored by ONG&ONG through the design language of its architecture.

A bold steel façade with hints of beige and ecru provides a fresh industrial outlook to the building, while subtle diagonal slates accentuate the stylish exterior

and allow for natural light to permeate the interior spaces. Stepping into the large double-storied entrance, users are treated to contrasting elements of grey walls and louvred panes that line the upper levels.

The strong emphasis on a carbon neutral footprint saw the adoption of solar panels to fuel innovative processes such as automated guided vehicles and electric vulcanisation. Its abundance of vertical windows allows users to pivot their attention between the lush exterior landscapes and the airy common spaces within, stimulating an influx of positive and groundbreaking ideas.



Architecture  
**2628TS**

The people-centric space boasts agile spaces, versatility, and collaboration and with an almost completely open-plan layout.

Offering architectural charm, historical values, and value appreciation, shophouses are in great demand in Singapore. Located in Chinatown, two adjoining shophouses required A&A works that called for conservation expertise. To present a spacious and efficient layout, the designers revamped

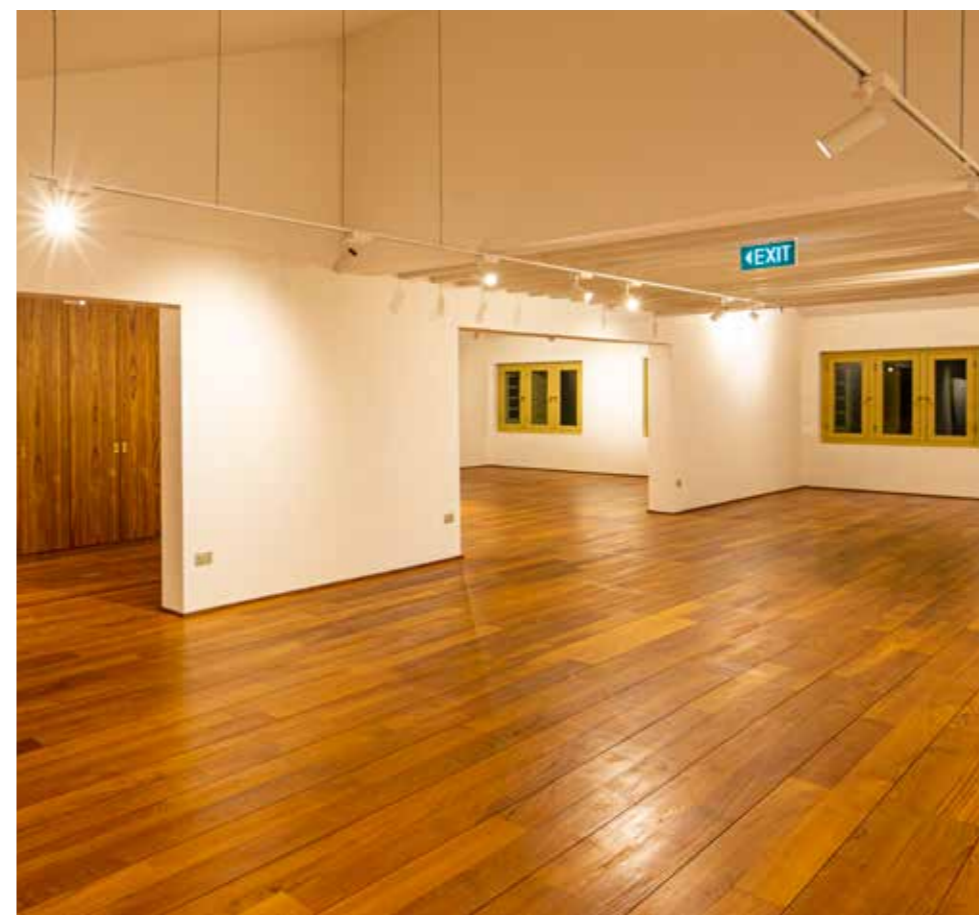
the interiors by combining both units. The existing staircases were removed, and a new one was installed to seamlessly fuse the units as one. To preserve the heritage architecture, the team employed simplicity and minimalism, allowing the colonial-era façade to shine.





The refurbished space, measuring approximately 2,700 sqft and spanning three storeys, reflects a structured simplicity, with the interior stripped to basics and rendered in neutral colours to create a calm, cosy, and relaxed space. As such, the timber flooring throughout the space juxtaposes well with the mostly

white interior. The mezzanine floor on the top level is a clever use of space as it not only provides a physical demarcation, but it also allows one to create a private area that could be turned into an office or a place to retreat while activities take place on the level below.





Architecture, Interior Design

# Fiz

Fiz captures the essence of Southeast Asia through its culinary offerings and stunning design, creating a dining experience that is both enriching and delightful.







Located in the lively F&B district of Tanjong Pagar, Fiz is a culinary beacon, embodying the rich flavours and architectural legacy of Southeast Asia. Its design harmonises iconic temple motifs, monastic simplicity, and elements of earth architecture, all punctuated with retro-futuristic nuances.

The interior is dominated by earthy textures and tones. Authentic natural materials like stone, wood, and terracotta as well as aged bronze and brass accents are incorporated, infusing the space with a subtle opulence and a nod to the ornate details of Southeast Asian temples.

The main entrance door is a statement piece, its design an abstract echoing of intricate textures and motifs.

Once inside and at the heart of Fiz is the main dining area, anchored by a monolith which functions as a central service station. Across the space, circular booths reinforce a circumambulating motion, and seats are upholstered in natural tactile fabrics that reflect the contours of rice terraces. Looking up, diners will find a ceiling built as a tribute to the vaulted ceilings of temples, where angled coves and vaults are refashioned into modern, geometric interpretations.



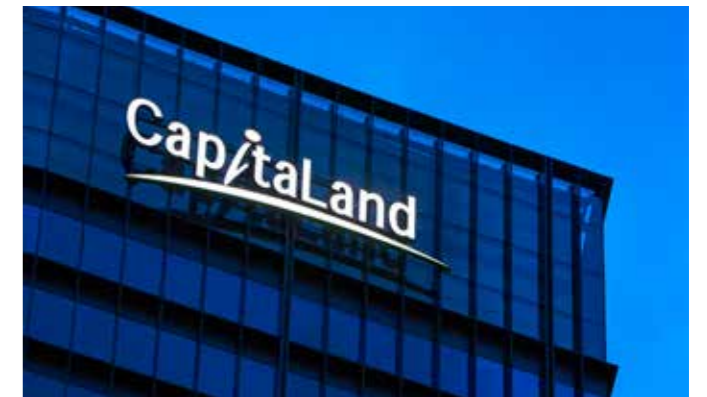




## Wayfinding & Brand Engagement

# Rochester Commons

Thoughtful wayfinding aims to connect the stacked work spaces and enriches the souls of its visitors.



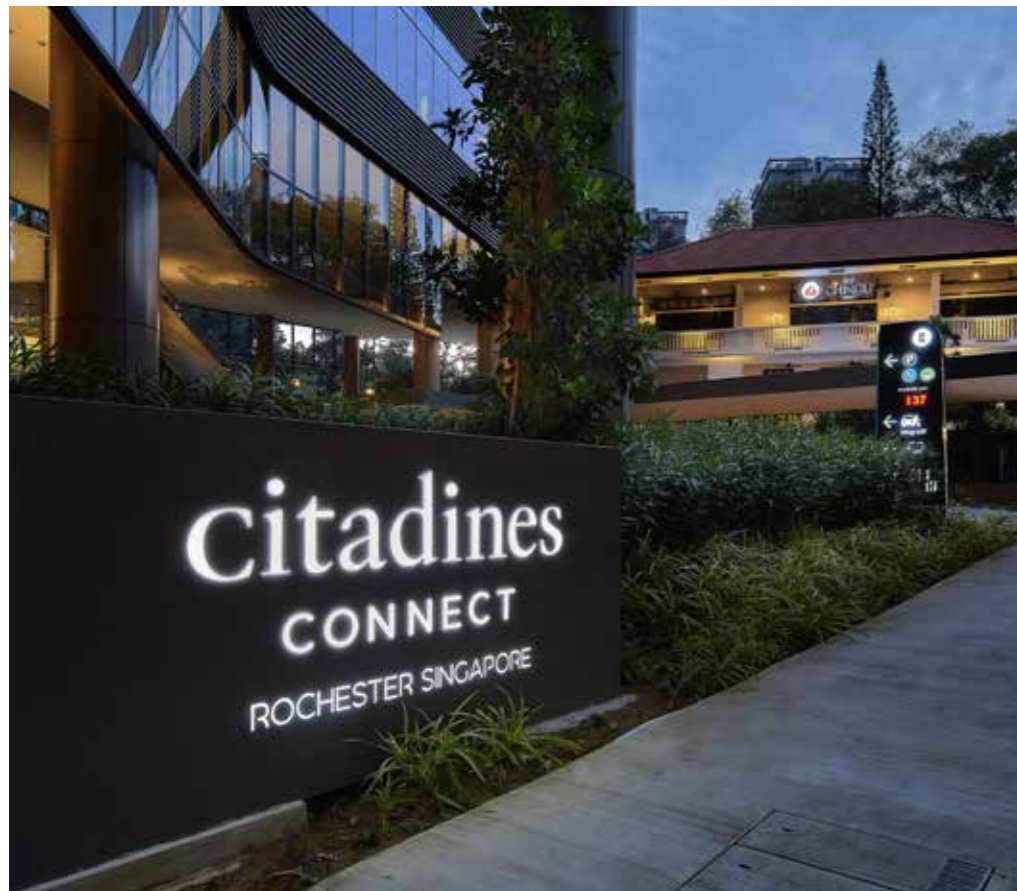
Rochester Commons is a campus-style integrated development that consists of a luxury hotel, a Grade 'A' office tower, and a series of 12 heritage bungalows. Envisaged by the Singapore government as a world-class learning ecosystem and knowledge hub within One-North, the precinct utilises both environmental and digital wayfinding cues to guide users across the different amenities.

Sporting a clean and elegant design font, the sky sign welcomes visitors into the hub. The IMMORTAL team also ensured that a unified colour palette is observed on the signages within each zone. Vehicular and street level signages boast whimsical yet distinct iconographies that not only catch the eye over long distances, but also paint a spatial narrative as visitors traverse



across the interweaving spaces. LED signboards are strategically erected near escalator landings and nodal pathways, guiding visitors between the residential and commercial sectors. Be it the outdoor pathways or the indoor corridors, visitors can appreciate that the wayfinding motive marries digital elements together with the existing greenery around the vicinity – sprouting a new lease of life that encourages a cohesive community experience wherever one goes.

Catapult – a newly built shared Executive Learning Centre, occupies the upper stories of Rochester Common's office tower. A knowledge trail is also featured, where viewing pavilions and meeting pods invite the natural allure of the surroundings into the daily lives of the personnel. The final design outcome bridges the connection between dated and new ideas, embracing the modernity of what Rochester Commons is all about.





Architecture, Brand Engagement

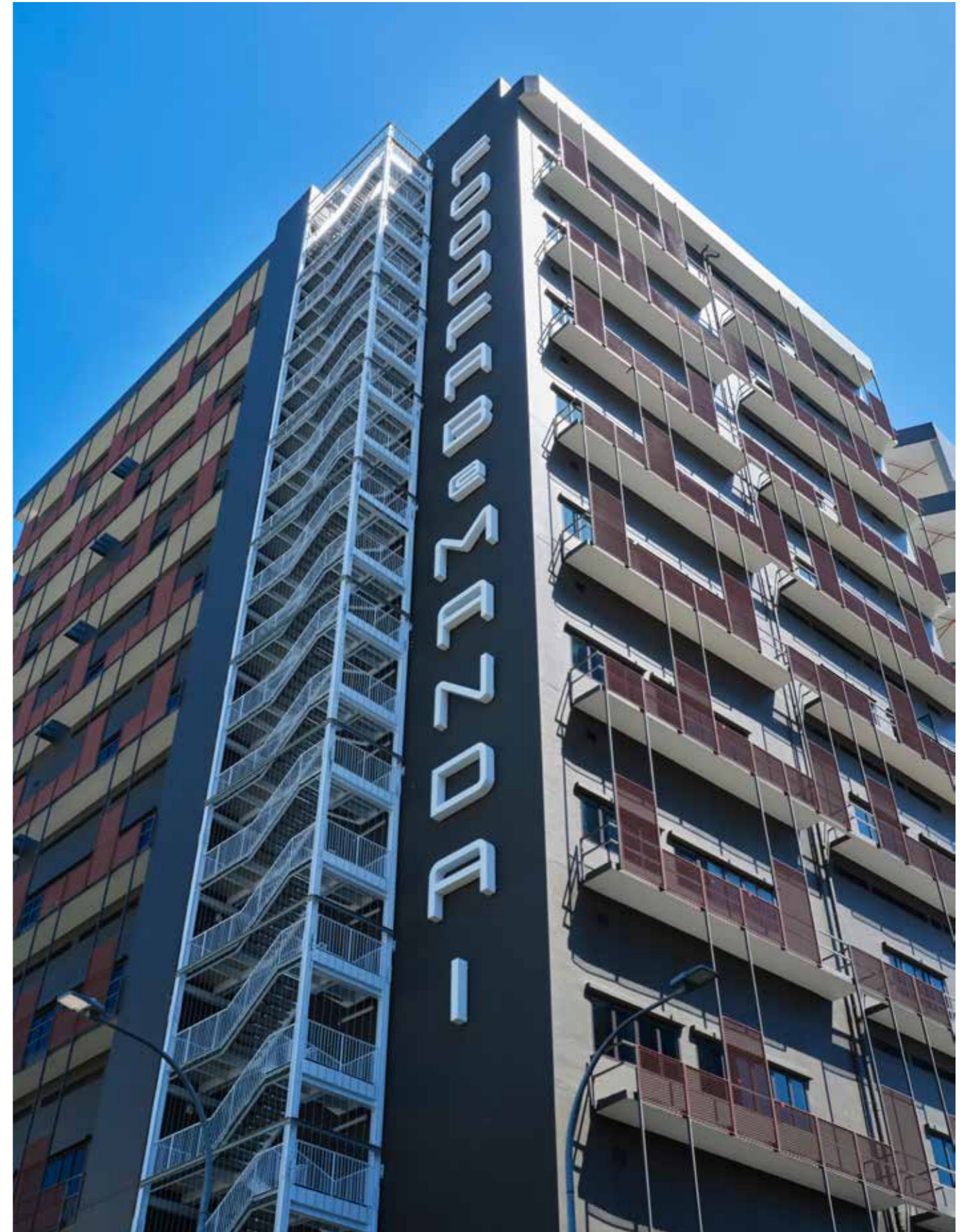
# Foodfab@Mandai

Where innovative design and sustainable technology converge to create a cutting-edge food processing facility.



A key part of the development and master planning of the new Mandai Park, FoodFab@Mandai serves as a food processing facility that utilises state-of-the-art techniques and machinery to produce sustainable food that seeks to combat the long-term concern of food scarcity in Singapore.

The design team struck a balance between an innovative fusion of verdant nature and an austere modern industrial look. The grid-like structure of the building is inspired by modular construction techniques prevalent in the modern age. A total of 47 units house an array of specialised facilities and equipment.







The vitality of natural ventilation is accentuated through perforated walls and mesh screens. Sunscreens are also installed along the corridors of the building to provide respite from the elements. Their staggered positions when viewed from afar resembles tetrimino blocks that play on the geometric concept of the building.

Shared infrastructure is a prominent feature throughout the precinct, where modular office design enables personnel to benefit from interactions that boost productivity and build

camaraderie. The building's fire escape also sees a throwback to its New York counterpart, which features a continuous flight of outdoor stairs spanning the entire height of the facade.

A consistent colour palette is observed throughout all the wayfinding elements that IMMORTAL devised, with a prominence of silver and grey tones lining the signage. Wayfinding is crucial in facilitating efficient and hassle-free movement between the many rooms across various levels.





M&E Engineering

# St. James Power Station

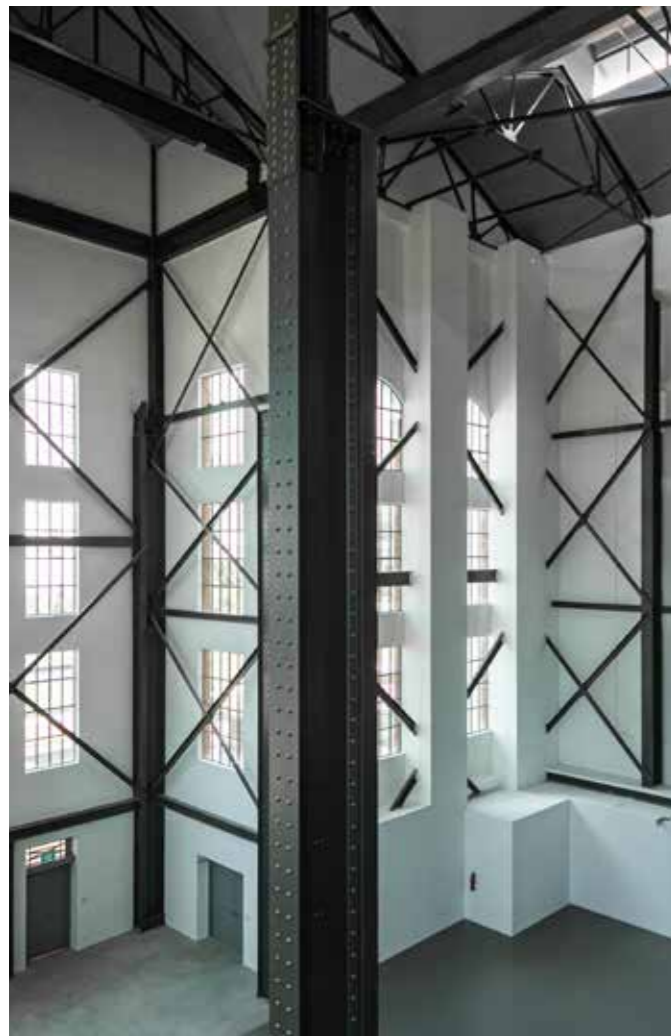
A detailed restoration beautifully merges historical architecture with modern technology.

Overlooking the southern coast of Singapore's Keppel Harbour, St. James Power Station was chosen as Dyson HQ's ideal location. The 110,000 sqft venue boasts Gold and Green Mark Platinum standards and has garnered international acclaim. The application of sustainable eco-friendly materials and practices align well with the core principles of Dyson. The firm engaged a variety of companies across different disciplines to undertake the property's restoration ahead of the upcoming Greater Southern Waterfront Development.

Rankine&Hill was tasked with restoring the M&E and several architectural elements of the

building, providing an assortment of cutting-edge technology and equipment that instills a novel experience for users. Existing design highlights, such as the fair-faced brick façade and steel frame structures, were modified to boost their structural integrity and inject a new lease of life.

The building also features two distinctive chimneys, with an indoor heritage trail situated within the core of one. This adaptive reuse has injected a new lease of life into the power station and sets the stage for inspirational experiences and fruitful engagements among Dyson personnel and their associates.





M&E Engineering

# One Holland Village

One Holland Village, where green spaces, upscale amenities, and smart technology create a unique urban oasis.

One Holland Village is a harmonious blend of Singapore's rich heritage and contemporary urban living. This mixed-use development elevates the concept of community-centric living, offering a unique blend of residential, retail, and commercial spaces while creating a lively hub that caters to the diverse needs of its residents and visitors.

One Holland Village concretises URA's plans for Holland Village as one of Singapore's endearing identity nodes and a distinct lifestyle destination. The Village Arcade, a key highlight of the development, is designed to be a vibrant retail and dining enclave. It offers a curated selection of shops and eateries.

Incorporating green spaces and wellness facilities is a cornerstone of One Holland Village's design. The development

boasts beautifully landscaped gardens and communal spaces that provide residents with a serene environment to relax and unwind. These green spaces are thoughtfully integrated into the development, creating a seamless connection between nature and urban living.

One Holland Village is dedicated to sustainability, with Rankine&Hill providing the M&E services. In Singapore's tropical climate, maintaining a comfortable indoor environment is crucial. Advanced ventilation and air conditioning systems regulate temperature and humidity, while energy-efficient lighting and appliances reduce consumption. With sustainability in mind, the development incorporates various eco-friendly features and technologies to minimise its environmental footprint.





M&E Engineering

## Grantral Mall

Modern architecture is not complete without the backbone of an effective M&E foundation.

Grantral Complex consists of two primary components, namely a retail mall open to the public as well as an office building. It is located in the industrial estate of MacPherson in Singapore, catering a variety of entertainment and conveniences for a community of office workers.

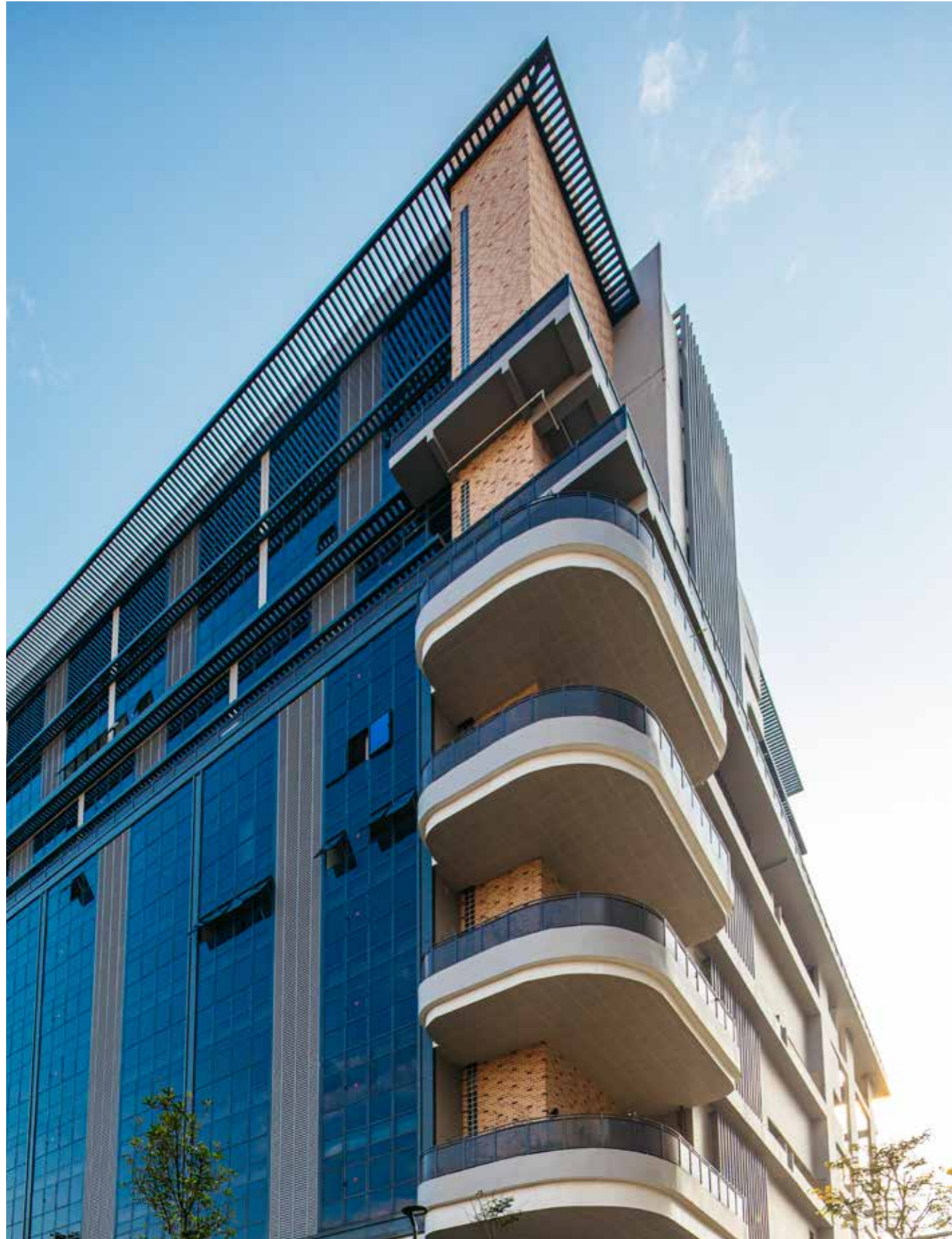
Rankine&Hill has devised a system of synergistic M&E solutions that breathes life into the wonderfully crafted interiors of the complex. Electrical networks and cooling units operate with the aid of sustainable energy conversion technology, ensuring that superfluous maintenance is kept to a minimum across the 30,000 sqft of supermarkets, fitness space and enrichment schools.

In any context, when M&E works are well designed, they are resource-efficient, easy to control and maintain, adaptable and planned with wellness in mind. To ensure this building met the client's requirements and aspirations, the team had to ensure their system struck a balance between commercial performance, usability, comfort, health and wellness, and sustainability.

One challenge the team faced was extensive coordination through regularly working with other project teams. Taking three years to complete the works, Rankine&Hill went beyond standard mechanical engineering solutions to exceed the client's expectations.







M&E Engineering

## INSPACE

INSPACE redefines industrial space with 84 units across 8 storeys, combining innovative design and spatial planning for a healthier, more inspiring work environment.

Located along New Industrial Road, INSPACE is an 8-storey multi-use factory building housing 84 units. With the architecture and interior design by SLB Developments and Oxley Holdings, the spatial planning and M&E was entrusted into the hands of Rankine&Hill.

The dated lattice framework plan typical of office units is often perceived as mundane and uninspiring to today's employee. Taking advantage of the flexibility and spaciousness of the units, the team provided sustainable

solutions with the health and well-being of occupants as a selling point.

Courtyards and open-air balconies provide pockets of respite and meditation for tenants, while a rooftop pool is flanked by a series of sky terraces. The vitality of these recreational facilities takes precedence in the final layout of the building, as the team believes commercial performance can be optimised when tenants are able to connect better with nature and themselves.



Masterplanning, Architecture

# Samyan Business Town

Samyan Business Town is set to become a dynamic commercial and residential destination.



Situated in Bangkok's Chinatown district, Samyan Business Town is home to a collection of five retail blocks, a three-star hotel and an eight-storey condominium. To achieve a harmonious integration of both commercial and residential functions, ONG&ONG has conceived a masterplan that allows occupants to indulge in amenities and retail offerings right at their doorstep!

The booming cultural scene in the region has captured the attention of the designers, who

firmly believe that architecture and services should revolve around transformation and convenience for the residents. The team oversaw the M&E engineering and installation processes of private elevators that connect each hotel unit to the main lobby.

A network of walkways link occupants to nearby transport stations, enabling swift commutes between commercial and residential estates.







Workspace Reimagined



Interior Design

## Social Media Platform Office Expansion

The unbeatable environment that the new space provides delivers an exceptional workplace experience for colleagues and clients.







Located in Tower 2 of the Marina Bay Financial Centre, office attributes its quality interior fit-out services and carpentry works to the joint efforts of SCA Design, Jones Lang LaSalle (JLL) and J Roger Preston.

The Marina Bay area has always been a prominent district, renowned for its open space atria and squares. The design team took inspiration from the

communality of the surroundings by designing the Micro Kitchen and Campfire that "bring the outside in". Levels across the building are creatively segregated into spatial narratives that reflects the culture and heritage of Singapore from past to present.

Ranging from Level 29's earthy colonial undertones and rattan finishes, to Level 34's contemporary architectural





artworks and room naming, the thematic transitions embrace the ethnic diversity and architectural evolution of Singapore. The sterility of the traditional office space is revamped to include mural-like decorations on the walls and stairwell, infusing a little bit of local heritage that contrasts against the modern city skyline just a few feet out the windows.

Environmental graphics catch the eye as users traverse the biophilic

hallways. The deliberate emphasis on sustainable engineering works behind the lighting and finishing not only instills the sensation of being outdoors, but also provides the Singapore context that both locals and those from overseas appreciate. This feeling of nostalgia resonates strongly within the working generation of adults, which is subtly translated through the pastel timber and design language of our architecture team.





Interior Design

# Hitachi Vantara

Enabling creativity and innovation, the Hitachi Vantara office is equal parts inspiring and functional.

Hitachi Vantara's office at Suntec City was designed to inspire and reflect the company's vision. Inspired by the infinity symbol, SCA created a space promoting connectivity with a clean, bright palette and bold black ceiling. A layered curved plaster ceiling and LED light strip connect the reception, demo lab, breakout space, and waiting lounge.

A welcoming lounge and beverage point near the reception serves as a social hub, while sofas by the windows

provide a collaborative space. The Demo Lab features a dichroic film on glass panels, creating a dynamic visual effect. Meeting rooms, including a conference room with stunning views, are equipped with acoustic panels and operable walls for flexibility. The conference room provides a unique visual experience. From one entrance, one can observe a textured baffle ceiling in a light grey hue, while when viewed from the opposite direction, one will see vibrant red accents adorning the ceiling.







As Hitachi Vantara's regional support hub, the Singapore office includes themed meeting rooms representing Singapore, Japan, and San Francisco, respectively the firm's Asia Pacific Regional Hub, origin country, and headquarters.

The most challenging aspect of space planning involved the optimal utilisation of the various small and irregular spaces around the building's core. The design team brainstormed

and transformed all the sharp angles into various functional collaborative spaces, including focus pods, high-touchdown tables, and private phone booths.

This design approach aligns with Hitachi's principles of Harmony, Sincerity, and Pioneering Spirit, maximising space utilisation and reflecting creativity and innovation. The new office design bridges the present and future, signalling Hitachi Vantara's ongoing journey.









Interior Design

## Taipei Fubon Bank

This workplace metaphorically underlines the feeling of fluid transitions in communication that are needed in the office.





Situated inside Guoco Tower within Singapore's Central Business District, Taipei Fubon Bank SG has cemented its status as one of Asia's leading banks, offering financial services such as corporate and private banking as well as wealth management. Its Singapore branch adopts a more stylish approach in its design thinking, where conventions are strategically eschewed for a more homely and immersive office environment.

The team introduced natural elements into each room to create a unique aesthetic while minimising obstruction of movements. Ranging from

overhanging foliage in the pantry and communal areas, to rows of coloured plants lining the work desks, the office sees no shortage of nature flourishing in its midst. A sleek brass finish lines the walls of the reception, with illuminated curved motifs on the ceiling guiding users to the heart of the premises. The meeting rooms feature a stone tabletop and leather chairs, coupled with a curved wall design and acoustic panel finishing perfect to hold a television monitor. Fluted glass panels as well as orange and green joineries partition the various stations and rooms, providing vibrancy to the refined interiors of the office.





Interior Design

# ABeam Consulting

The neutral yet impactful aesthetic deliberately brightens the workplace, helping to establish a welcoming and inspirational work environment.

Ikigai is a Japanese concept that means one's 'reason for being' and SCA has taken this term as inspiration for the design of ABeam Consulting. The client's brief was centred on the need to have an interior that reflects cosiness, comfort, and homelike vibes and SCA designed a space

where colleagues can connect, collaborate, and thrive by focusing on simplicity, minimising clutter, warm neutral and blue tones, and lots of natural light. Upon entering, visitors are greeted by a curved wall with a backlit ABeam Consulting logo





and spotlight, while a running LED strip adds brightness to the area. The team has ingeniously completed the space with a small waiting area by the curved wall. Just behind this curved wall is a cleverly concealed beverage point and refreshment area.

Envisioned as a collaborative hub, the space allows employees to get together and share a meal or conversation. Some noteworthy elements are that all the furniture including the operable wall within this space is movable and adjustable, enabling it to adapt to various needs.

The boardroom features acoustic wall panels with grooves for improved sound quality. A walkway lined with lockers on one side and a tropical mural on

the other paves the way to the private and collaborative work area that is filled with a selection of different-sized single or multiple occupancy booths and open workspaces. Aesthetically, the workplace is marked by high-quality finishes and a neutral palette, with exposed ceilings.

Spanning approximately 7,100 sqft., this office is a prime example of eco-friendliness, resource efficiency, and energy management. The Smart Air Conditioning Zoning and Control system, which operates on timers and senses space usage, responds dynamically to space demand. This ensures that energy consumption is optimised while keeping the workspace comfortable.









Interior Design

# Financial Institution

Investing in interior design to create a space that's comfortable, welcoming, and vibrant makes a real difference to how employees work at this financial institution.

When designing for the business units of the financial institution, themes of youthfulness and vibrancy were applied for the reception and working areas. Shades of timber and green line the connecting pathways, while large floor-to-ceiling windows allow natural light to enhance the biophilic appeal of the interior. Be it the evergreen scenery encompassing the vicinity, or the organically harvested plants and moss grown on a preserved

green wall in the office, the sensation of immersing in nature can be experienced to the fullest. Each room is designed to be flexible and progressive, playing on the effects of contrasting colour tones that stimulate the senses and psyches of occupants travelling from one space to another. Corporate colour hues such as navy and grey are often embellished with yellow and turquoise on the meeting room







walls, creating an avant-garde environment that spells freshness. Privacy can also be enjoyed through the thoughtful installation of cushioned seating pods. Be it working in solitude or alongside a desk of coworkers, the abundance of potted greenery provides reprieve to the eyes of personnel.

The aesthetically pleasing décor is also built upon the importance of security, with anti-fingerprint properties present on frequently touched surfaces. Adjustable desks for working while standing improve well-being, enabling more fruitful engagements. The nestable chairs and tables also add to the versatility of each room, providing easy reconfiguration to meet the vast array of client needs.









Interior Design

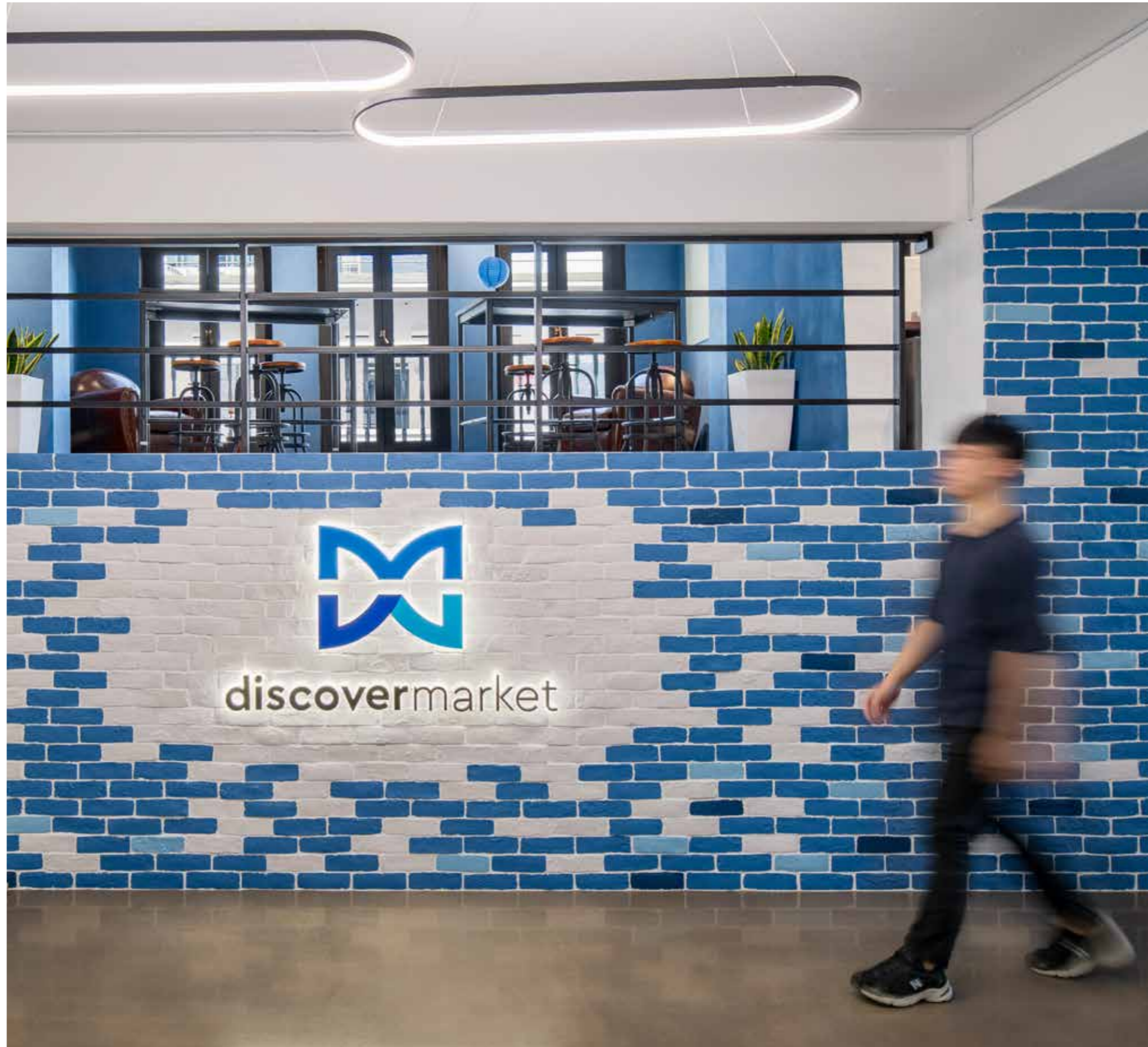
## discovermarket

A space where employees could enjoy the social side of their working lives, something which has been lost over the last few years.



Boasting an appealing blend of sophistication and professionalism, the insurance solution provider firm discovermarket pays homage to its historically rich locale within Singapore's Central Business District. SCA Design combined elements such as brick walls and textured paint adding to the tactile flourish of the entrance.

The interior presents a delightful assembly of colours and features that are reminiscent of the location's past up to the present. The bar area marks the building's go-to recreational venue, which saw its brick walls coated in warm orange paint. The counter also sports a uniquely ornamented Kit-Kat tile accents that reference the relaxed ambience of the bar.







After being greeted by the mezzanine work lounge and stylish reception area, visitors are taken to the collaboration area where modernity meets adaptability. Casual drinkers and work clients are able to lounge and socialise amidst the open layout work environment, while feasting their eyes on the preserved heritage structures and motifs around the office.

Modern aesthetics such as the gradient frosted floor-to-ceiling windows seek to evoke privacy through simplicity. Furnished with an assortment of agile furniture and expansive glass writing boards, the environment balances the importance of form and function to provide the characteristic air of opulence attributed to discovermarket.



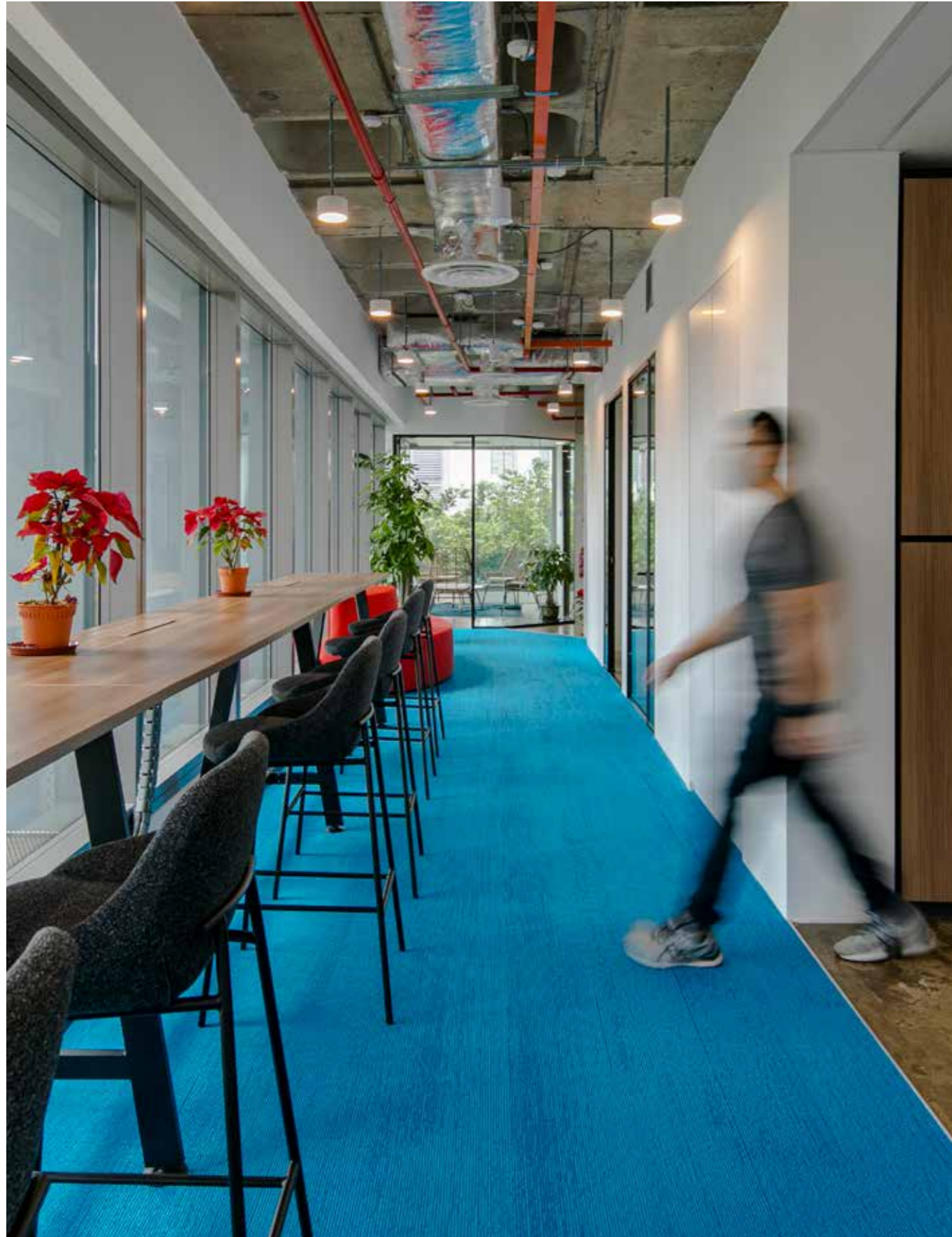
Interior Design

# Palo IT

Together with the warm finishes and pops of colour, the design creates a modest, focused place for minds to come together and drive business development.







In an effort to break the stereotype of traditional partitioned workspaces, the innovation consultancy firm Palo IT sought to embrace the digital evolution alongside fresh design concepts proposed by SCA Design. With the hybrid work environment gaining favour over the years, their personnel expressed desire for a sense of hygge and homeliness across the different zones in their office.

Carpeted floors featuring a predominant colour theme are used to demarcate the function rooms, with a mix of indoor and outdoor furniture evoking a sense of comfort. Walls are fitted with acoustic buffering properties that meet the specific privacy demands of each collaborative space, while pockets of greenery channel the concept of homeliness throughout the office.







Striking a middle ground is key in fusing elements of relaxation together with purpose-driven spaces for collaboration. Large communal benches are equipped with contemporary furniture that allows employees to work. The company hopes that innovation stems from the sensory experiences fueled by the richly decorated interiors and the lush foliage outside.





Interior Design

# Roche Diagnostics

Providing its employees a stylish and long-lasting space, this is a modern office that is collaborative, dynamic, and harnesses diversity in work preferences and rhythms.





Minimalism in itself often belies innate luxury and elegance. This concept was explored by SCA for the redesigning process of Roche's three-storey office in Singapore's Kallang industrial district. Drawing parallels to the company's mission of empowering people's lives through scientific advancements, the team believes that the right balance of agility in the newly furnished environment will transform the lives of employees as well.

The team opted for a monochromatic design that allows nature to be incorporated seamlessly into the interior elements across the different levels. A moss wall is featured at the entrance, while ornamental plants are arranged throughout the office to improve airflow and rejuvenate employees. The prominence of wood finishes, coupled with a warm blend of green, coral pink and light blue across various furnishings, contribute to the office's quiet elegance.







An array of flexible working spaces was altered to increase both functionality and promote interactions between personnel and clients. Soundproof pods and partitioned rooms were created to facilitate video conferencing and private meeting sessions. The office space is predicated on combining proper work ethics with the convenience of one's

home. Strategic use of greenery not only improves air quality, but also prioritises the personal wellbeing of each employee.

The interior transformation brings about the modern desire of warmth and coziness, spawning the growth of camaraderie and fruitful collaborations.





Interior Design

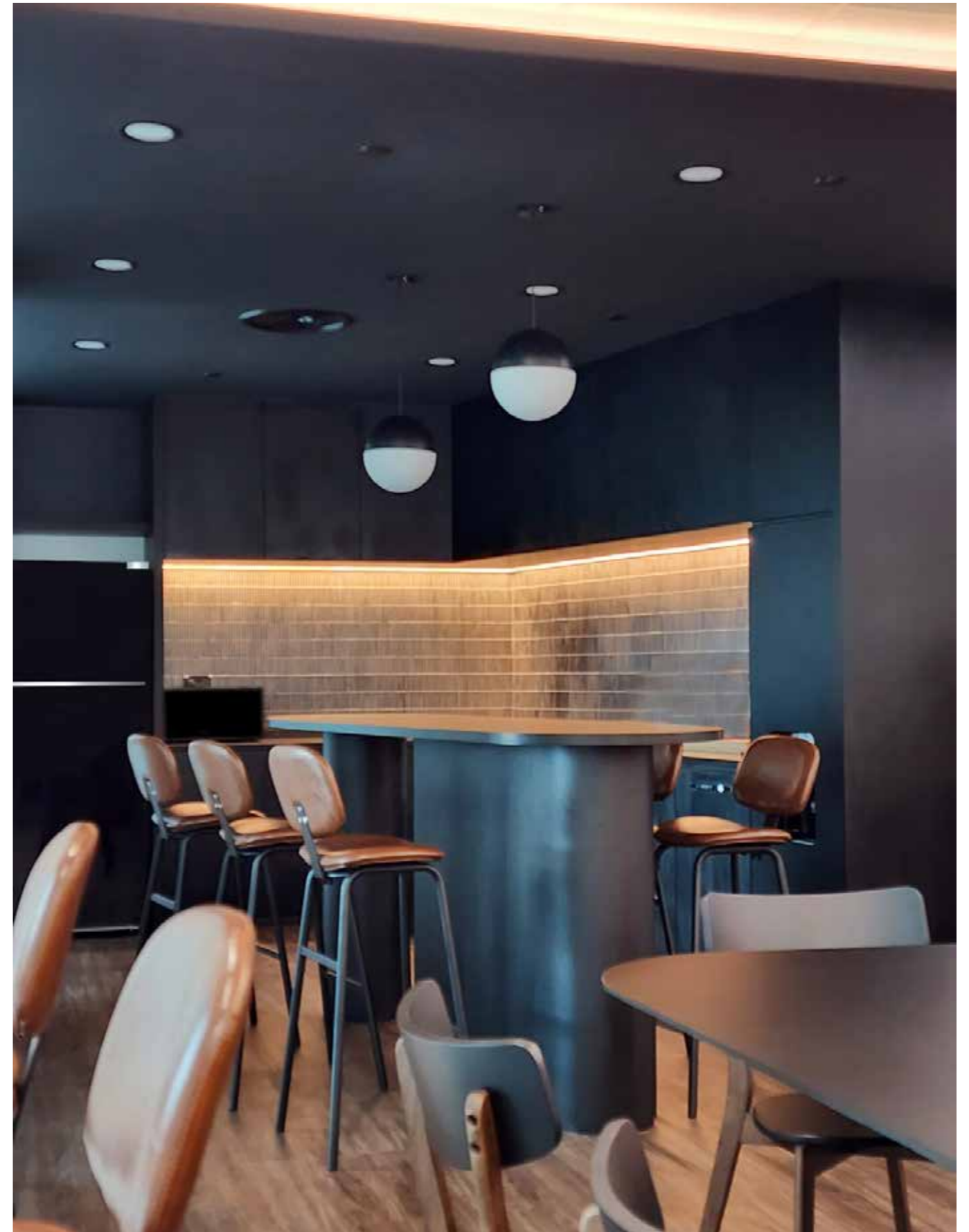
## Wachsman

The design ethos revolves around simplicity and functionality, while carefully selected colours, natural accents, and the incorporation of elements promoting well-being create a serene ambiance.



Designing an office space that reflects the professionalism and harmony of its personnel is no easy task! SCA Design has crafted a simple but impactful interior experience that showcases the functionality of each room through carefully crafted visual themes.

The entrance features a prominent Wachsman logo complemented by dark wooden floors and ceiling finishes. A large mirror occupies one of the walls, providing an added sense of depth and spaciousness to the main foyer. The vinyl flooring patterns act as subtle wayfinding





cues, guiding users to different zones of the office. The breakout room is equipped with a mini bar island to inject hints of indulgence into the work environment, while orange bench seats and custom dining tables provide additional spots for respite.

The meeting room also echoes the Wachsman palette, with dark textured wallpaper and acoustic panels mitigating distractions. An artistic LED linear light lamp shines down onto a veneered meeting table, surrounded by tan-coloured chairs that cater to the comfort and wellbeing of staff and clients.







## Interior Design **Jafco Asia**

Neutral colours, textures and natural materials work together to make Jafco a contemporary workplace that exudes a smart and homely atmosphere.



Located in the Ocean Financial Centre along Collyer Quay, the Jafco Asia office underwent an interior refurbishment that reflects the growth and brand identity of the renowned venture capital firm. The strong presence of the firm is established with custom signage adorning the entryway.

The concept of high-end hospitality is employed – treating each space and design with the practicality of light and sound. Employees are able to unwind in the expansive pantry that is strategically compartmentalised for easy access to various appliances.



The floorplan devised by ONG&ONG's team sees the Jafco office divided into workstations, breakout rooms, and meeting rooms, all of which sport a seamless design and colour palette that adheres to the idea of simplicity. With the inclusion of advanced AC technology that vastly improves work performance, each spatial

component embraces the design and practicality of its functions to produce the coveted effect of a high-end hospitality experience.

Muted colour tones aid in the evocation of a residential work environment, where Jafco employees get to experience the wonders and prolificacy of a "less is more" concept.





Interior Design

# Media Research Agency

Relating to the way colleagues typically communicate with one another, this space is attuned to evolving workplace needs and the post-pandemic hybrid approach.



Taking on a minimalistic approach, this office in Raffles Place, Singapore, means business. As a global leader in audience metrics and shaping the future of media, this workplace is intended to be diverse and inclusive while allowing its employees to work in a free and independent manner. SCA was engaged to bring this vision to life.

The office space is both agile and technologically progressive, while providing an ideal base for

all its business functions. Adopting a largely neutral colour scheme with pops of colour to add character, spaces are demarcated by layout and aesthetics and in accordance with functions and requirements.

From the get-go, the team conveyed inclusivity in its design to create a welcoming environment. With creativity and a sense of community at the centre of the design, multiple flexible adaptable spaces



help foster an environment of creativity and transparency. Creating a balance between open and closed workspaces, SCA designed a number of huddle rooms that are flanked by open work areas. Bold colours give the effect of an upbeat, innovative, and productive workplace.

In the collaboration zone, the team adopted mobile bench seating to cater to employees' need for collaboration and brainstorming spaces. This also enables multi-functional space

configurations, such as for townhalls, mini seminars, or team discussions. For privacy, phone booths allow employees to take phone or video calls.

At the pantry, a joyful mood is created with a colourful, retro-inspired backdrop that serves as a contrast to an otherwise neutral-looking space. This agency's new workspace is vibrant and engaging, satisfying the ever-changing needs of both seasoned and new employees.





Interior Design

## Media Conglomerate

SCA Design followed the client's brief to create a space that would allow people to work flexibly yet efficiently, and fosters connections, collaboration, and creativity.





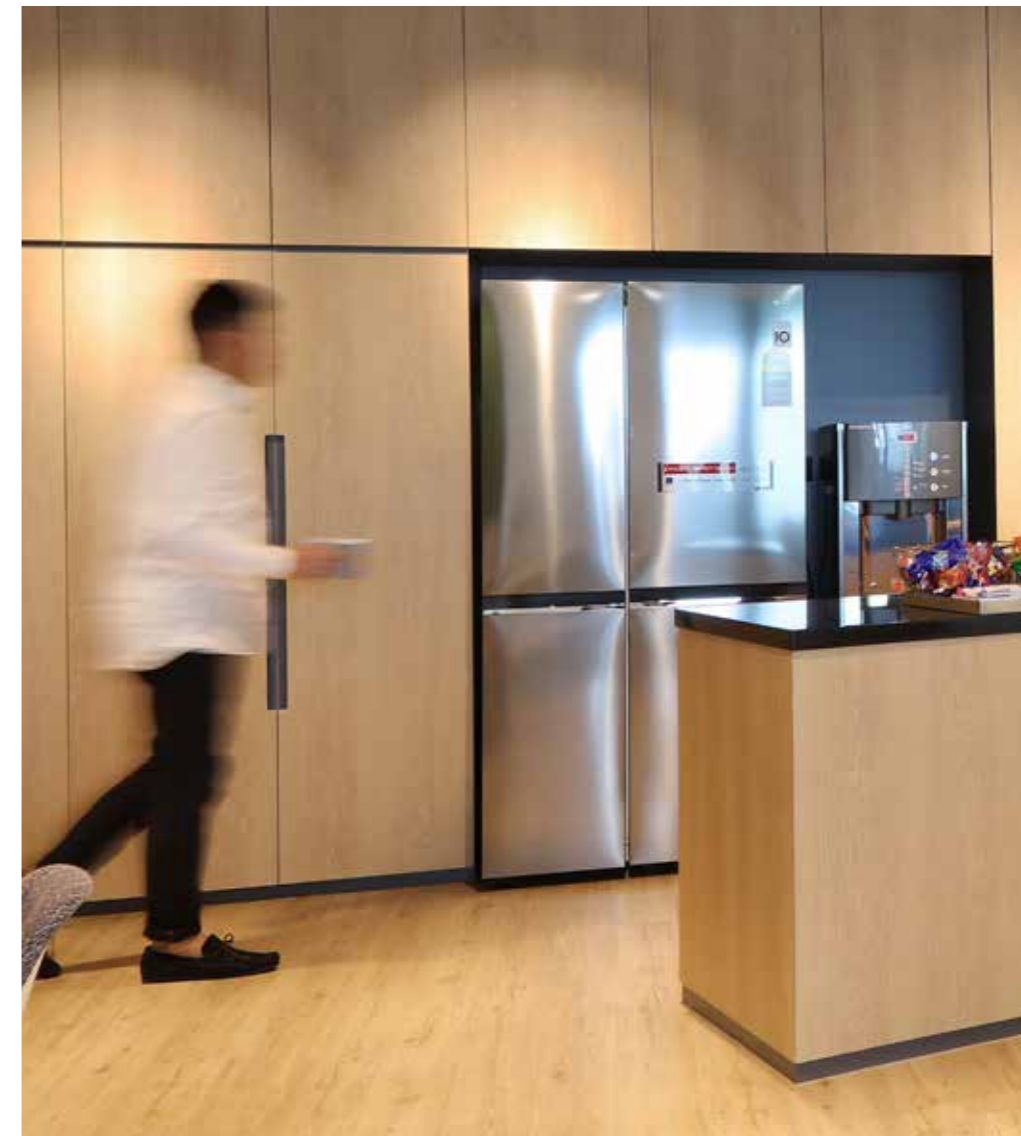


Freedom of choice is an empowering tool that motivates employees to engage with one another whenever and wherever they desire in the office. This new conglomerate office situated in ALICE@Mediapolis in One-north aims to accomplish this feat, aided by the design thinking and prowess of SCA Design.

Visual stimulants such as dynamic linear and curved design elements, coupled with a bright elemental colour palette, help spark inspirational collaborations and boost productivity. The main atrium filters into an array of functional areas, each with its own design characteristics. Large sliding doors that partition the meeting rooms are frosted

and overglazed with company colours, providing an added layer of privacy. They are designed to be easily retractable to ensure smooth transitions from one setting to another.

In contrast to the boardroom that sports a darker and more serious colour tone across its acoustic ceiling design, the pantry reflects vibrancy. The copper undertones of the bar stools complement well with the wood finishing of the floors and cabinets, offering employees a new perspective into the diversity and pleasure of the pantry. A green wall overlooks a series of meeting tables and a bar counter for employees to interact and relax.





Interior Design  
**Cadence**

Heralded by the principles of agility, inclusivity, and community, the design for this contemporary office supports agile working and interdisciplinary collaboration.



Located within the heart of International Business Park, Cadence prides itself as a company with more than 30 years of computational software expertise. Naturally, its revered reputation justified the call for an interior transformation that melds modern design with professionalism.

Clean directional lines constitute a key design theme across the office, fostering a sense of forward thinking and progression of the company's endeavours. Ornamental plants grace the ceiling panels alongside the lighting fixtures, adding another

dimension of respite to users in the common rooms.

The use of red accents adds visual punch to the Cadence logo that graces the main entrance, while calmer tones of timber and beige dominate the rest of the interior walls. Contrastingly, the team opted for a monochromatic tiling system that incorporates a Peranakan pattern. The bold decision not only seeks to evoke a sense of nostalgia and familiarity among employees, but also instills a novel corporate identity that resonates deeply with the core and future outlook of the company.





Interior Design  
**Brunswick**



The floorplate is bright and open, further encouraging colleagues to interact with each other, while soft seating areas tucked around corners accommodate moments of solitude.



Strategic advisory firm Brunswick Group believes that a dynamic work culture stems from a strong and relevant office design. SCA Design recognised the significance of Peranakan culture in Singapore's local context and they melded it thematically through the motifs on the vinyl floor tiles of the office. These vintage elements are merged with more modern motifs that preserve the timelessness of the office.

Decorative foliage is bathed in an abundance of natural sunlight permeating the office space, while glass doors and partitions separating the multiple collaborative rooms promote a sense of connection between personnel and departments. Several key rooms catered towards brainstorming and discussions are also furnished with lush décor and actual vintage furnishings that impart a sense of authenticity and soul.





ong-ong.com



proj-x.com



proj-innovations.com



rankine-hill.com



sca-design.com



immortal.com.sg



oxd.ong-ong.com

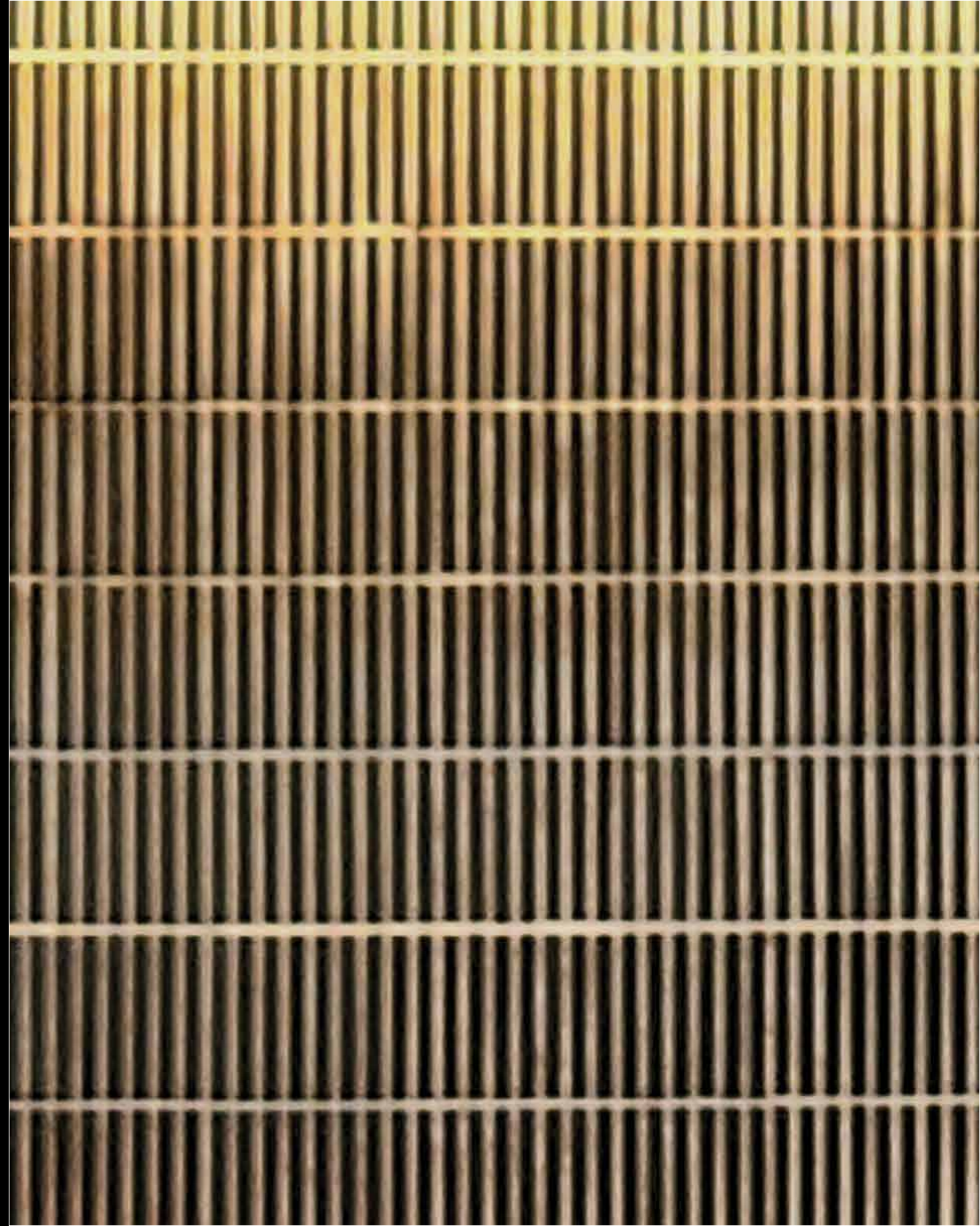


**ONG&ONG Group Pte Ltd**  
510 Thomson Road,  
#11-00 SLF Building, Singapore 298135  
t +65 6258 8666  
corpcomms@ong-ong.com  
www.group.ong-ong.com

COMMERCE: AN ANTHOLOGY OF BEST IN CLASS COMMERCIAL SPACES | VOLUME THREE | SUMMER 2024

CHIEF EDITOR: ASHVINKUMAR KANTILAL | MANAGING EDITOR: STANLEY TAN | CREATIVE DIRECTOR: STANLEY TAN  
| DESIGNER: GOH LIP SEN | CONTRIBUTORS: EMERIC LAU , CHIANG HUI , K.VATSALA

COPYRIGHT 2024 © THREE SIXTY REVIEW. ALL RIGHTS RESERVED. NO PART OF THIS PUBLICATION MAY BE REPRODUCED  
WITHOUT PRIOR PERMISSION FROM THE PUBLISHERS. WHILE EVERY EFFORT HAS BEEN MADE TO ENSURE THE ACCURACY  
OF THE INFORMATION CONTAINED IN THIS PUBLICATION, THE PUBLISHER CANNOT ACCEPT RESPONSIBILITY FOR ANY  
ERRORS IT MAY CONTAIN.







# WE UNDERSTAND ASIA

SINGAPORE | INDONESIA | MALAYSIA | MONGOLIA | MYANMAR | THAILAND | VIETNAM

[group.ong-ong.com](http://group.ong-ong.com)